

# Third Sector Partnership

---

**Kate Hainsworth**

**CEO of Leeds Community Foundation**

[leedscf.org.uk](https://leedscf.org.uk)

# Creating Cities of Opportunity For All



UK COMMUNITY  
FOUNDATIONS  
GIVING FOR LOCAL GOOD

 Leeds  
Community  
Foundation

## Introduction to Leeds Community Foundation

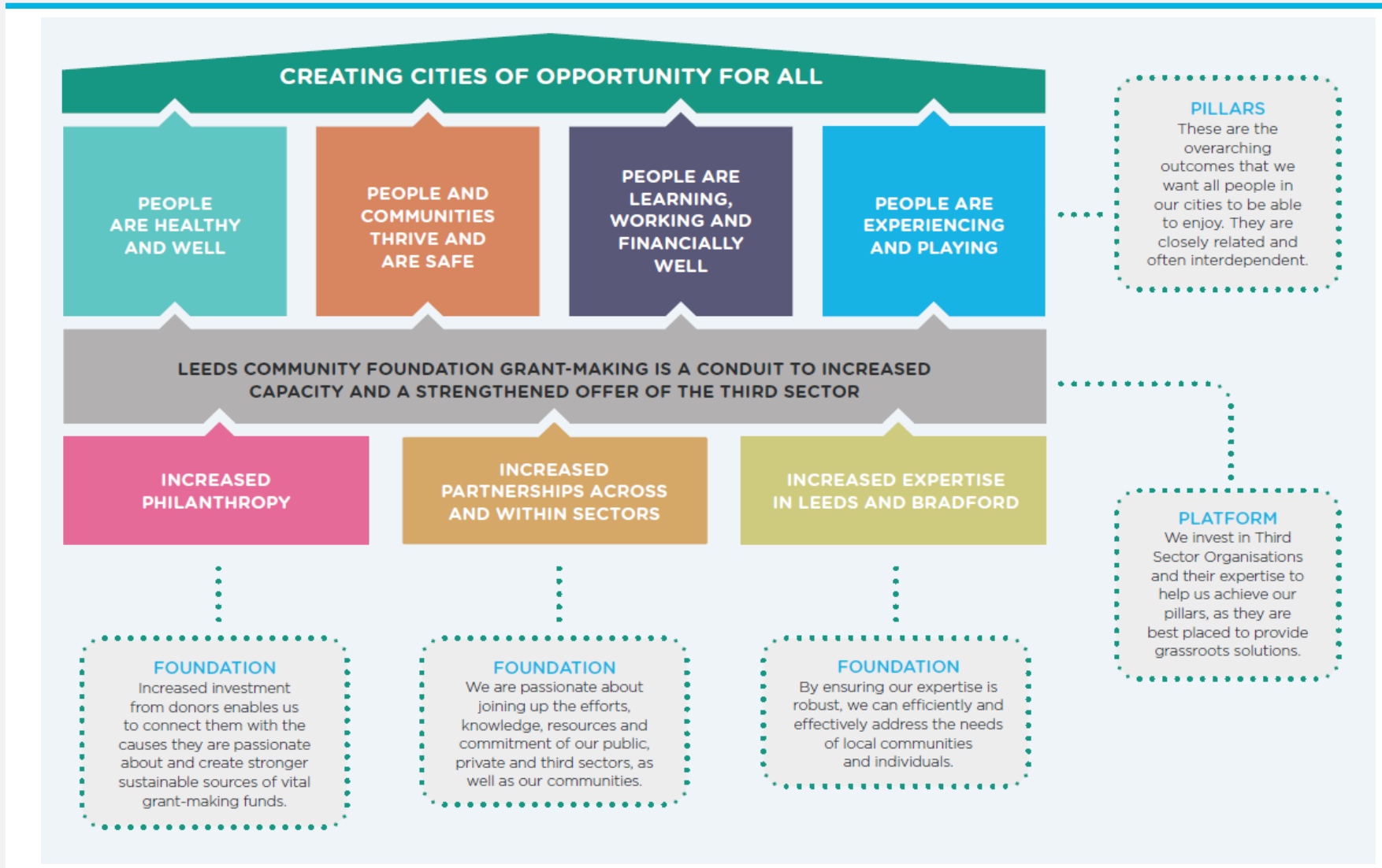
Leeds Community Foundation is creating a city of opportunity for all. We work together with partners to create positive change with the communities that need it most, by investing funding and expertise to build a better future now.

As part of a national network, [UK Community Foundations](#), we invest in these groups by distributing grants and sharing advice – acting as a catalyst for positive change. Leeds Community Foundation relies on the generosity of individuals, businesses and public sector organisations to help local people to gain the support they need now, while investing in a brighter future for all.

Leeds Community Foundation has distributed **over £42 million in grants to date** across Leeds and Bradford and beyond, enabling positive change in the lives of hundreds of thousands of people in our communities.



# Our Theory of Change



## Total Investment 2018/19

# £4.1m

---

Invested as grants

# 634

---

Grants distributed

# 371

---

Third Sector Organisations supported

# £5,000

---

Most frequent grant size



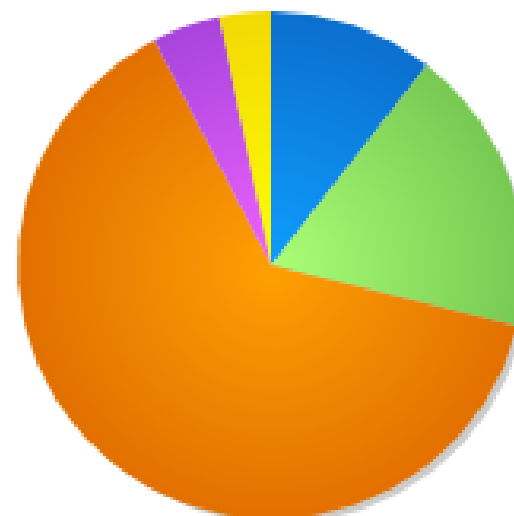
# Grants awarded 2018-19 – Geographical split



Amount awarded (Millions)

Local Authority: Local Authority Name

- Bradford
- Leeds
- Wakefield
- Other



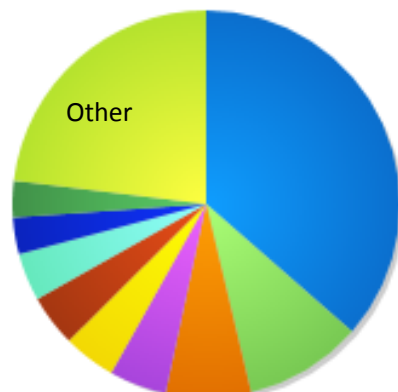
No of grants

Local Authority: Local Authority Name

- 
- Bradford
- Leeds
- Wakefield
- Other



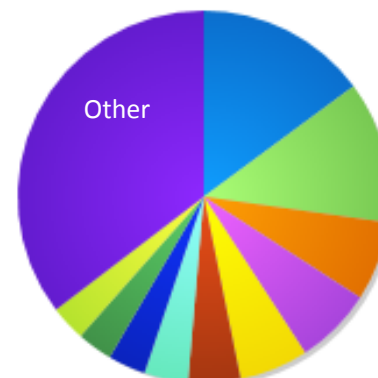
# Grants awarded 2018-19 – Programmes



Amount awarded (Millions)

Programme: Programme Name

- Henry Smith
- Jimbo's Fund
- Healthy Holidays
- Power of Communities
- Time to Shine
- Nationwide
- Youth Social Action (#iwill fund)
- Lunch Clubs
- Leeds Fund: Strategic Grants
- Other



No of grants

Programme: Programme Name

- Lunch Clubs
- Healthy Holidays
- Jimbo's Fund
- Youth Social Action (#iwill fund)
- Leeds Fund: Micro Grants
- Winter Wellbeing Community Grant Scheme
- Time to Shine
- Henry Smith
- Wesleyan
- Pears Youth Fund
- Other

**1280** applications assessed

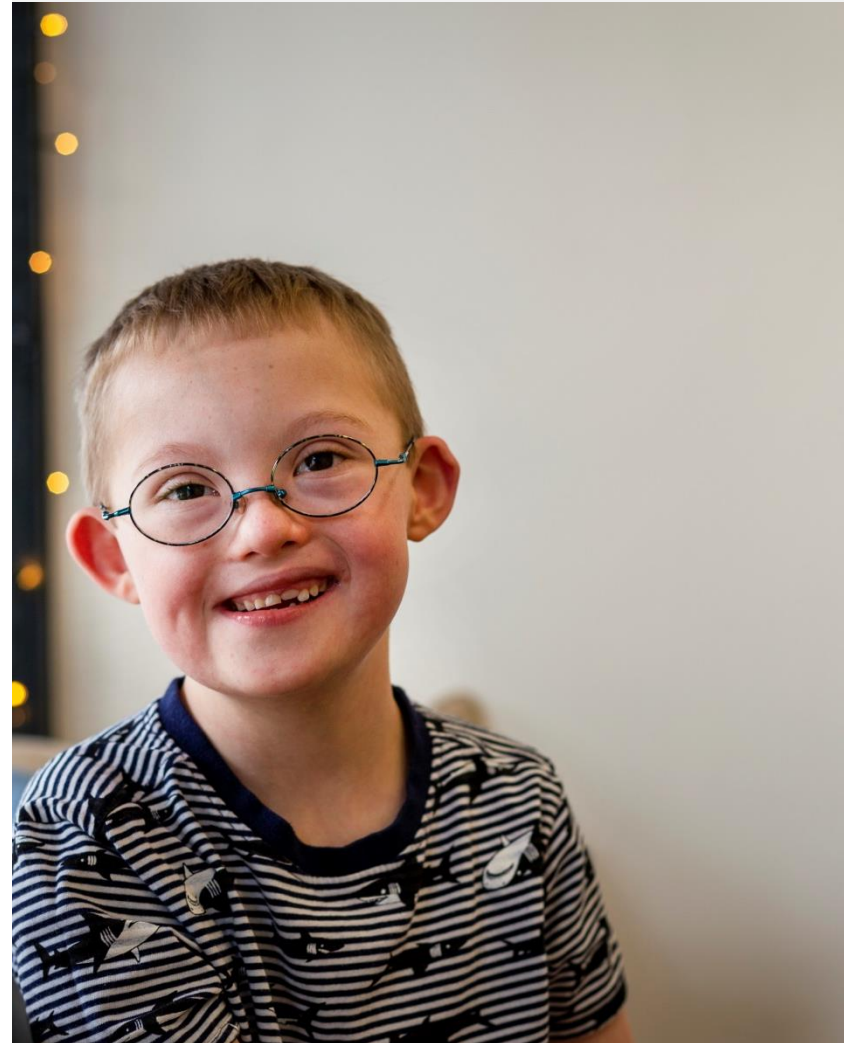
**43%** success rate

Success rate varies with programme :  
Go Higher West Yorkshire - 29%

vs

Big Change - 90%

**59,000** people supported



## Total Investment 2018/19 GiveBradford

# £835,033

Value of Grants Distributed

# 77

Grants Distributed

# £5,000

Most frequent grant size





### Healthy Holidays for thousands of children across Leeds and Bradford

**Leeds:** Investment from Leeds City Council, Jimbo's Fund, Asda Foundation and the Department of Education

79 projects - £553,000

**Bradford:** Support from The National Lottery Community Fund, Morrisons Foundation and The BG Campbell Trust Fund

41 projects - £270,000



### Harnessing the Power of Our Communities

Built on the successful £2.3m  
NHS-funded [Third Sector Health Grants](#)  
programme (2015-2017)

**£250,000** additional funding through  
West Yorkshire and Harrogate Health and  
Care Partnership

**9** projects focusing on some of Leeds  
Plan priorities: tackling health  
inequalities, loneliness and isolation &  
carer support

Currently looking to launch another  
similar fund (with Forum Central)



## Highlights 2018-19

### Suicide Prevention

Leeds Men's Suicide Prevention programme

In partnership with Leeds City Council

**£134,000** invested in 9 projects

3 year programme

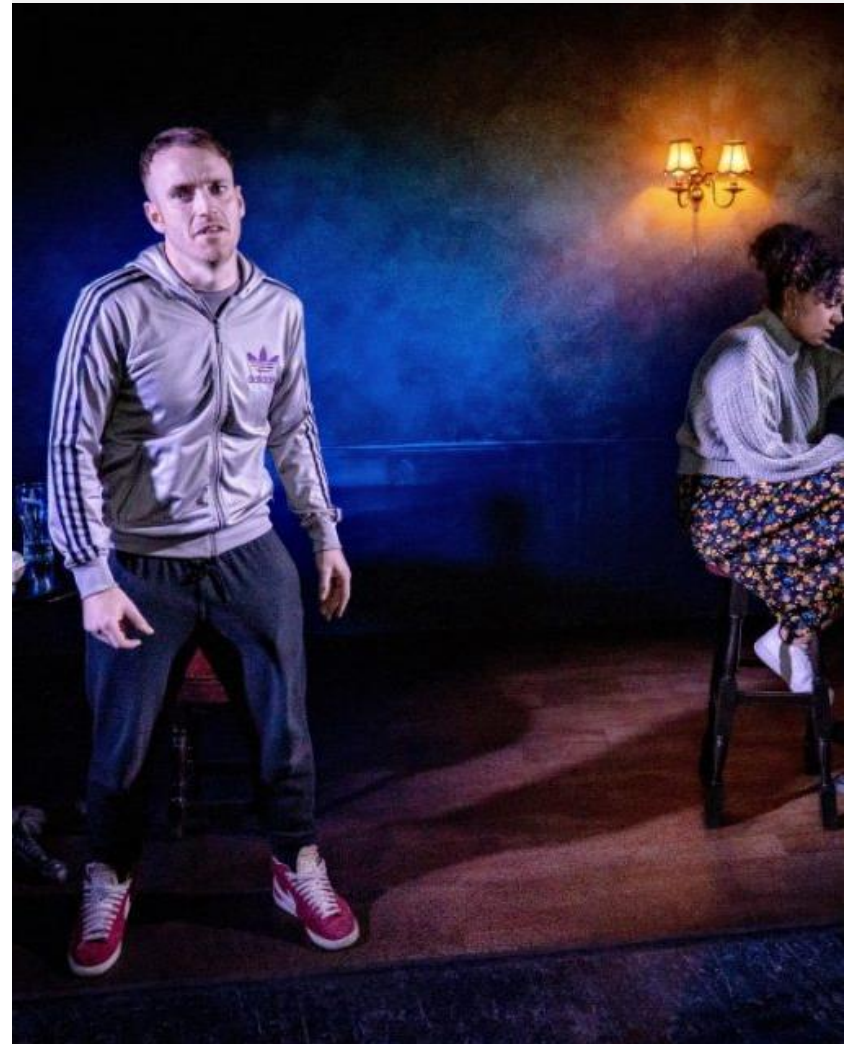
### Helping Young People to access Higher Education

Partnership with Go Higher West Yorkshire

£130,000 to 14 community organisations

Support to make informed choices around  
Higher Education, delivering innovative  
projects that develop young people's  
knowledge of the benefits of Higher Education

New round recently closed





## Our Theory of Change: Strengthening the sector

### Impact of a small organisation on people in crisis at foodbanks

**DIAL Leeds** supports people with disabilities and long-term conditions  
Largely run by volunteers with lived experience.

Leeds Fund Strategic Grant, enabled DIAL Leeds to work with an external consultant and measure the impact of its service providing benefits advice and peer support to people with mental health and financial problems at foodbanks.

DIAL currently has 85 cases on its books and an in-depth analysis of a sample of these showed that **for every £1 invested there was a return of £7.50** in terms of direct financial benefit to the client and improved wellbeing.



## Investment across the 4 Pillars of our Theory of Change

### 47% of our grants supported people to be Healthy and Well

Relevant Programmes :

- Children Looked After Fund
- Community Partnering Fund
- Healthy Holidays
- Henry Smith Charity
- Ideas that Change Lives
- #iWill Youth Social Action Fund
- Jimbo's Fund
- Liz and Terry Bramall Foundation Fund
- Provident Social Impact Fund
- Solutions for an Ageing Society Awards
- Stay Well this Winter
- The Leeds Fund

### 24% of our grants supported people and communities to thrive and be safe

Relevant programmes:

- Building A Stronger Britain Together
- Henry Smith Charity
- High Sheriff of West Yorkshire Fund
- #iWill Youth Social Action Fund
- Jimbo's Fund
- Pears Youth Fund



## Investment across the 4 Pillars of our Theory of Change

### 15% of our grants supported people to learn, work and be financially well

Relevant programmes:

- Ann Maguire Arts Education Fund
- Community Partnering Fund
- Go Higher West Yorkshire
- Ideas that Change Lives
- #iWill Youth Social Action Fund
- Jimbo’s Fund
- Liz and Terry Bramall Foundation Fund
- Pears Youth Fund
- Provident Social Impact Fund
- St Chad’s Fund
- Wesleyan Fund

### 14% of our grants supported people to experience and play

Relevant programmes:

- Ann Maguire Arts Education Fund
- #iWill Youth Social Action Fund
- Jimbo’s Fund
- Pears Youth Fund
- Wesleyan Fund
  
- Children Looked After Fund –  
10 grants to 10 Children Looked After and  
Care Leavers (£4,100 total in 2018-19)  
Included 5 young people to attend  
19-day Outward Bound Trust programme, an  
initiative which gives participants the  
opportunity to embark on incredible journeys  
of self-discovery on land and on water.

# The Leeds Fund: Micro Grants – 2018-19

Up to £500 for individuals or fledgling organisations

17 micro grants supporting 500 people

Range of activities:

Creative writing course, digital literacy, getting isolated young mums to ‘Gym or Swim’, gaining edible gardening skills and creating a community herb garden in a neglected former bin yard, a school uniform recycling scheme, helping children feel more comfortable about attending school, free libraries in unexpected places and projects getting communities together and talking.

*“Our pilot for a weekly cafe went so well we have continued to keep the café running and now have 20- 30 people attending regularly. Everyone keeps on returning so that’s a sign that they are enjoying the event each week.”* Memory Lane Café, Yeadon

# Leeds Fund Small Grants (up to £2,500) – 2018-19

Investment of **£80,000** in **37 projects**  
**4,338 people** benefitted (based on End of Grant reports)

Range of activities:

a youth café in Harehills, a welcome hub in Crossgates shopping centre, outings for people with learning disabilities and autism, a ‘You Forgot the Mince’ play around domestic violence and abuse and Cooking Together sessions for parents and children of different racial heritage and background in Bramley are just some of the creative approaches successfully piloted.

*“She doesn’t walk around with her head down anymore. She looks at you and speaks to everyone. That may not seem much to many people, but it is a stupendous achievement for her, and we are very proud to have been part of it.” The Growing Zone, Leeds*

# Leeds Fund Strategic grants (up to £25,000) – 2018-19

## **First priority 2016-18:**

Mental Health

£615,254 distributed

1,585 people supported around their mental health and wellbeing

## **Current priority 2019-20:**

Loneliness and Inclusion

£159,068 distributed to 7 Third Sector Organisations

Supporting a range of people who are lonely and need our support from young people, older people, asylum seekers and refugees and those who may be considering taking their own lives.

## Gipton Fire Station – Power of a Place

**“Best Community project” nomination** - Royal Institute of Chartered Surveyors Awards.

**Safari Cubs crèche** opened September 2018 so tenants facilities now fully occupied

**Tenants collaboration group** set up :

**‘Meet Me at the Old Fire Station’ project**

**Season Of Light East Leeds project**

**First Vintage Fire Engine Day** - over 900 people attended

**Christmas Dinner** for 100 local people (funded by ASDA)

**Healthy Holidays** with DAZL Summer 18 & 19

**Cinema Nights** – over 100 local people

Around **120-170 room hire sessions** booked per month





# Equality, Diversity and Inclusion at Leeds Community Foundation

Working Group set up

Trustee champion Cleveland Henry

Member of Diversity, Equity and Inclusion Coalition alongside 13 other community foundations and national funders

Grants