



2016

Statistical Profile
(December 2016 Update)



Durham City Major Centre



Durham
Area Action Partnership

Sub-county Statistical Profile Summary Sheets



Durham City MC

Contents	Page
Map	1
Introduction	
Geography	2
Background	2
Notes	3
Useful Links	4
Updates	4
Deprivation	
Background	6
Domains and Geography	7
Deprivation Geography	7
Main Points	8
Deprivation by Geography: % population living in deprived areas (Index)	11
Deprivation Map	14
People and Place	
Population change (ONS mid-year estimates)	15
Population Structure (ONS mid-year estimates)	16
Dependency ratios (ONS mid-year estimates)	19
Ethnicity (2011 Census)	21
Religion (2011 Census)	22
Occupied households (2011 Census)	23
Wealthier	
Qualifications (2011 Census)	25
Students in Higher Education Institutions (Higher Education Statistics Agency)	27
Business Units (DCC)	27
Retail Unit Occupancy Rates (DCC)	27
Average House Prices (ONS Experimental House Price Index)	28
Fuel Poverty (Department for Energy and Climate Change)	29
Housing Benefit (Department for Works and Pensions)	30
Worklessness (Department for Works and Pensions)	32
Claimant Count - Working Age (ONS/Job Centre Plus)	34
Claimant Count - Young People (ONS/Job Centre Plus)	36
Job Seekers Allowance - Long Term Claimants (ONS/Job Centre Plus)	38
Workday Population (2011 Census)	40
Average Weekly Income and Median House Price (ONS Small area estimates 2011/12)	42

Sub-county Statistical Profile
Summary Sheets



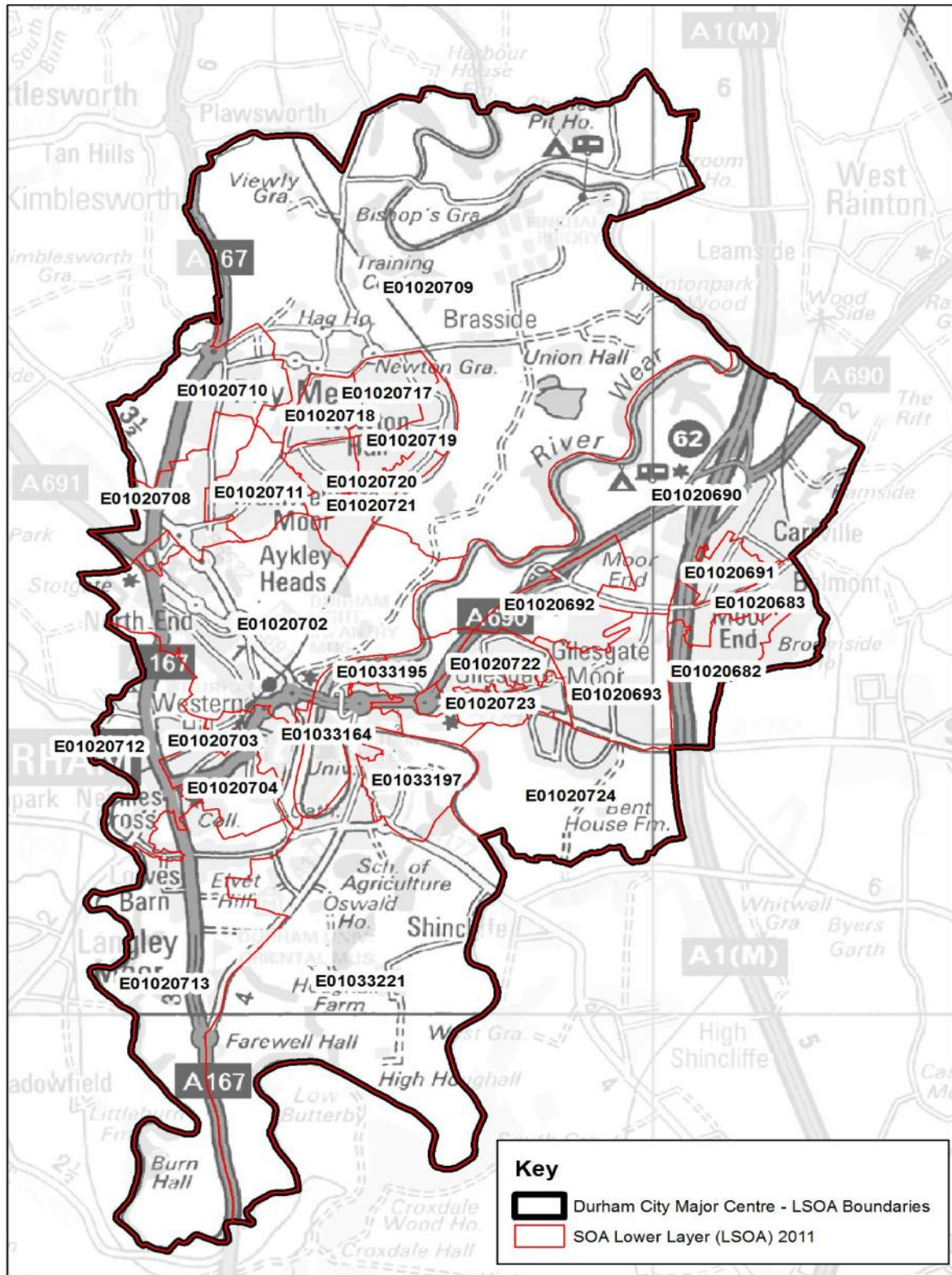
Durham City MC

Contents	Page
Children and Young People	
Key Stage 2 Attainment (Department for Education)	45
Key Stage 4 Attainment (Department for Education)	47
Child Poverty (HM Revenue & Customs)	48
Healthier	
Limiting Long Term Illness or Disability (2011 Census)	50
General Health (2011 Census)	51
Provision of Unpaid Care (2011 Census)	52
Disability Living Allowance (Department for Works and Pensions)	53
Personal Independence Payments (PIPs) (DWP)	54
Premature Mortality (Primary Care Mortality Database)	56
Safer	
Recorded Crime and Anti Social Behaviour (ASB) Incidents (Durham Constabulary; ONS PFA tables)	60
Road Traffic Accidents (Durham County Council)	63
Greener	
Recorded ASB Environmental Incidents (Durham Constabulary; ONS PFA tables)	64
Average Domestic Energy Consumption (Dept. ECC)	65
Car Ownership (2011 Census)	66
Estimated Annual Vehicle Miles (DfT)	67

Sub-county Statistical Profile
Summary Sheets



Durham City MC



© Crown Copyright and database rights 2016. Ordnance Survey LA 100049055

Sub-county Statistical Profile

Step 1: Select Geography: Major_Centres

Step 1: Select Area: Durham City MC



Geography

Major Centres: These boundaries are the 12 Major Centres in County Durham developed to aid planning policy in the county. These boundaries use the Census LSOA (Lower Super Output Areas) as a base. It is important to note that the area covered by each major centre will also include some outlying areas surrounding the settlement and so the figures quoted for the major centre will be higher than the settlement on its own.

Background

The Durham City Major Centre 'urban' in nature with a population of 50,400 . Covering an area of over 3,700 hectares (14.4 sq. miles), with a population density of 12.9 (people/hectare), which is nearly six times that of the county (2.3).

The major centre has a UNESCO World Heritage cathedral and castle, university and surrounding villages. The city is based around the River Wear which meanders through an incised valley as it flows north with steeply wooded banks on the peninsula creating a picturesque setting that is enjoyed by many thousands of visitors every year. Main transport arteries include the A1(M) and London-Edinburgh East Coast railway with an important station and, arguably, the finest view in the country.

The city centre has a retail heart around the historic market place and the cobbled, narrow streets add to its distinctiveness. In the Millennium Square, the Gala Theatre, Clayport Library and many restaurants/pubs have extended the cultural and night time economy. Beyond the city centre, the area is rural, being a mixture of smaller settlements, farms, woods and natural land.

Sub-county Statistical Profile



Step 1: Select Geography:

Step 1: Select Area:

Notes

This profile summarises key indicators across the 5 Durham County Council corporate themes with an additional introductory section on deprivation and people and place.

The indicators are presented for principal geographies used by Durham County Council and its partners for service provision and administration within County Durham. These principal geographies are:

Geography	Number of Areas
Clinical Commissioning Groups	2
Clinical Commissioning Localities	6
Strategic Partnership Areas	5
Major Centres	12
Area Action Partnerships	14

Figures for the Partnerships Areas, Clinical Commissioning area and Major Centres are derived from aggregation of the Lower Super Output Area (LSOA) Census geography. (In 2001 there were 320 LSOAs rising to 324 LSOAs in 2011). Further details on this geography are available from the Office for National Statistics website, (link given below).

Figures for Area Action Partnerships derived from a combination of aggregation and estimation through a best fit process, as they are not completely co-terminus with LSOAs boundaries. Therefore figures for these areas should be considered as estimations only.

The indicators are grouped into 5 themes plus an introductory population section and a section on the Index of Deprivation, presented on separate worksheets which can be printed off as hand-outs. To use the figures in other spreadsheets the user should first copy the required cells and then use <Edit><Paste Special><Values>.

	Index of Deprivation	(9 pages)
	People and Place	(10 Pages)
themes are:		
	Wealthier: Focusing on creating a vibrant economy and putting regeneration and economic development at the heart of all our plans	(20 Pages)
	Children & YP: Enabling children and young people to develop and achieve their aspirations and to maximise their potential in line with Every Child Matters	(6 Pages)
	Healthier: Improving health and wellbeing	(9 Pages)
	Safer: Creating a safer and more cohesive county	(4 Pages)
	Greener: Ensuring an attractive and 'liveable' local environment, and contributing to tackling global environment challenges	(3 Pages)

Sub-county Statistical Profile



Step 1: Select Geography:

Step 1: Select Area:

Useful Links:

Durham County Council Statistics:

<http://www.durham.gov.uk/stats>

Office for National Statistics:

<http://www.ons.gov.uk/ons/index.html>

Neighbourhood Statistics:

<http://neighbourhood.statistics.gov.uk>

NOMISWEB:

<http://www.nomisweb.co.uk/>

Updates

Indicator (Source)

Latest Data

Population change (ONS mid-year estimates)	2015
Population Structure (ONS mid-year estimates)	2015
Dependency ratios (ONS mid-year estimates)	2015
Ethnicity (2011 Census)	2011
Religion (2011 Census)	2011
Occupied households (2011 Census)	2011
Index of Deprivation	2015
Qualifications (2011 Census)	2011
Students in Higher Education Institutions (Higher Education Statistics Agency)	2013/14
Business Units (DCC)	2013
Retail Unit Occupancy Rates (DCC)	2013
Average House Prices (ONS Experimental House Price Index)	2014
Fuel Poverty (Department for Energy and Climate Change)	2014
Housing Benefit (Department for Works and Pensions)	February 2016
Worklessness (Department for Works and Pensions)	February 2016
Claimant Count - Working Age (ONS/Job Centre Plus)	July 2016
Claimant Count - Young People (ONS/Job Centre Plus)	July 2016
Job Seekers Allowance - Long Term Claimants (ONS/Job Centre Plus)	July 2016

Sub-county Statistical Profile

Step 1: Select Geography:

Step 1: Select Area:



Updates - continued

Indicator (Source)	Latest Data
Employment (2011 Census)	2011
Average Weekly Income - ONS model-based small area income estimates by MSOA	2011/12
Limiting Long Term Illness or Disability (2011 Census)	2011
General Health (2011 Census)	2011
Provision of Unpaid Care (2011 Census)	2011
Disability Living Allowance (Department for Works and Pensions (DWP))	February 2016
Personal Independence Payments (PIPs) (DWP)	February 2016
Premature Mortality (Primary Care Mortality Database)	2013/14
Key Stage 2 Attainment (Department for Education)	2014/15
Key Stage 4 Attainment (Department for Education)	2014/15
Child Poverty (HM Revenue & Customs)	2014
Average Domestic Energy Consumption (Dept. ECC)	2014
Car Ownership (2011 Census)	2011
Estimated Annual Vehicle Miles (DfT)	2013/14
Recorded Crime and ASB Incidents (Durham Constabulary; ONS PFA tables)	2013/14
Road Traffic Accidents (Durham County Council)	2013

Deprivation

Contents	Page
Background	5
Domains and Geography	6
Deprivation Geography	6
Main Points	7
Deprivation by Geography: % population living in deprived areas (Index of Deprivation 2015)	10

Useful Links

ID2015 national release:	https://www.gov.uk/government/statistics/english-indices-of-deprivation-2015
ID2015 County Durham report:	http://www.countydurhampartnership.co.uk/article/8468/Population-Poverty-and-Deprivation

Background

Since the 1970s the Department of Communities and Local Government and its predecessors have calculated various local measures of deprivation in England. The increasing availability of administrative data at local levels has driven developments in the definition and measurement of deprivation. This release contains the latest version of these statistics, mainly from the period 2012/13 and form the English Indices of Deprivation 2015. It is important to note that these statistics are a measure of relative deprivation, not affluence, and to recognise that not every person in a highly deprived area will themselves be deprived. Equally, there will be some deprived people living in the least deprived areas.

Deprivation covers a broad range of issues and refers to unmet needs caused by a lack of resources of all kinds, not just financial. The English Indices of Deprivation attempt to measure a broader concept of multiple deprivation, made up of several distinct dimensions, or domains, of deprivation.

The vast majority of data that underpin the 2015 indices reflect the period 2012/13 while the 2010 indices reflect data from 2008. Communities and Local Government undertook a review of statistical outputs before deciding to release the ID 2015.

Sub-county Statistical Profile Summary Sheets

Durham City MC



Deprivation

Domains and Geography

The English Indices of Deprivation 2015 (ID2015) use 37 separate indicators (the 2010 Indices used 38), organised across seven distinct domains of deprivation which can be combined, using appropriate weights, to calculate the Index of Multiple Deprivation 2015 (IMD 2015).

This is an overall measure of multiple deprivation experienced by people living in an area and is calculated for every Lower layer Super Output Area (LSOA) in England (32,844 LSOAs). The ID2015 can be used to rank every LSOA in England according to their relative level of deprivation.

The seven distinct domains that have been identified in the English Indices of Deprivation are; Income Deprivation, Employment Deprivation, Health and Disability Deprivation, Education Skills and Training Deprivation, Barriers to Housing and Services, Living Environment Deprivation and Crime.

Two additional indices are also included in the ID2015 release, although they are not included in the overall index. These indices are the Income Deprivation Affecting Children Index (IDACI) and the Income Deprivation Affecting Older People Index (IDAOPI) 2015 at Lower layer Super Output Area (LSOA) level.

Deprivation Geography

The ID2015, (along with the previous ID2010, ID2007 and ID2004), was constructed using the Census Lower Super Output Area (LSOA) geography, (there were 32,884 LSOAs in England in 2011, the previous ID's used the 2001 definition of 32,482 LSOAs). Within County Durham there are 324 LSOAs (Previously there were 320 LSOAs).

This means that it is not possible to provide national deprivation ranks for the geographies used in this report. Instead figures quoted in this report estimate deprivation across the areas by measuring the percentage of the county's population living in deprived LSOAs within the specified area using a process of aggregation and estimation based upon LSOA populations.

In addition the areas are then ranked. For example there are five Partnership areas in County Durham. These are ranked 1 to 5 with 1 having the largest population living in deprived areas and 5 having the least.

Deprivation

Index of Deprivation

Main Points - County Durham

- County Durham is now the 75th most deprived area out of 326 single and lower tier local authorities in England (based on the rank of average score). This is 13 places lower (improved) than in the previous IMD released in 2010 when the county was ranked as the 62nd most deprived LA in England.
- Within the region County Durham remains the most deprived local authority in terms of both income and employment deprivation compared with the other 11 authorities in the region (Table 1 below).
- Nationally the majority (83 per cent) of neighbourhoods that are the most deprived according to the 2015 Index of Multiple Deprivation were also the most deprived according to the 2010 Index.
- 61 per cent of local authority districts contain at least one of the most deprived neighbourhoods in England.
- Middlesbrough, Knowsley, Kingston upon Hull, Liverpool and Manchester are the local authorities with the highest proportions of neighbourhoods among the most deprived in England.
- The 20 most deprived local authorities are largely the same as found for the 2010 Index, but the London Boroughs of Hackney, Tower Hamlets, Newham and Haringey have become relatively less deprived and no longer feature in this list.
- The underlying data from the ID2015 indicates that in 2012/13 42.2% of the county's population lived in the top 30% most deprived areas. Within the sub-domains:
- 46.1% of the county's population were experiencing income deprivation, (an increase in relative income deprivation from 42.4% in the ID2010),
 - 60.8% of the working age population (aged 18-59/64 – old definition) were experiencing some form of employment deprivation, (an improvement from 64.9% in the ID2010),
 - 67.5% of the population were experiencing health deprivation, (an improvement from 70.8% in the ID2010),
 - 37.7% of the population were experiencing education deprivation, (an improvement from 46.8% in the ID2010); all higher than the 30% average across England.

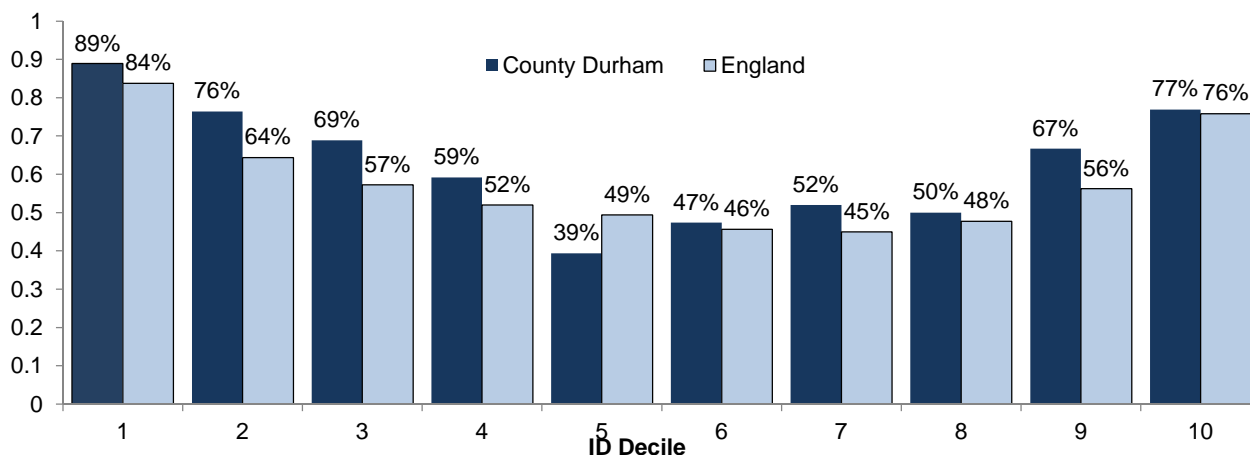
Durham City MC

Deprivation

Main Points - County Durham

- The proportion of the county's LSOAs in the most deprived deciles has remained higher than the proportion nationally as illustrated below.

Figure 1: Proportion of LSOAs in the same decile of the ID2010 and ID2015. (County Durham: 313/324 LSOAs; England: 31,672/32,844).



Note: Some LSOAs were either split or merged in the 2011 Census and so the graph above represents only those LSOAs not amended in 2011.

County Durham is ranked as the most deprived local authority in the North East for both the Income and Employment measure in the ID2015.

Table 1a: The Income Scale: ID2007, 2010 and ID 2015 rankings for the North East local authorities

CODE	LA NAME	Rank ¹ of Income Scale		
		2015	2010	2007
E06000005	Darlington	134	138	133
E06000047	County Durham	7	7	8
E08000037	Gateshead	65	64	58
E06000001	Hartlepool	113	112	102
E06000002	Middlesbrough	64	67	62
E08000021	Newcastle upon Tyne	31	29	26
E08000022	North Tyneside	79	78	70
E06000057	Northumberland	51	53	52
E06000003	Redcar and Cleveland	94	94	83
E08000023	South Tyneside	78	77	68
E06000004	Stockton-on-Tees	75	81	75
E08000024	Sunderland	27	28	24

1. Ranks are based on the number of people who are income or employment deprived within a specific local authority.

Sub-county Statistical Profile Summary Sheets



Durham City MC

Deprivation

Main Points - County Durham

Table 1b: The Employment Scale: ID2007, 2010 and ID 2015 rankings for the North East local authorities

CODE	LA NAME	Rank ¹ of Employment Scale		
		2015	2010	2007
E06000005	Darlington	133	133	123
E06000047	County Durham	5	5	4
E08000037	Gateshead	57	53	47
E06000001	Hartlepool	110	100	90
E06000002	Middlesbrough	63	66	58
E08000021	Newcastle upon Tyne	23	20	18
E08000022	North Tyneside	72	64	57
E06000057	Northumberland	42	29	26
E06000003	Redcar and Cleveland	88	79	67
E08000023	South Tyneside	68	62	55
E06000004	Stockton-on-Tees	66	67	62
E08000024	Sunderland	16	11	7

1. Ranks are based on the number of people who are income or employment deprived within a specific local authority.

Main Points - County Durham

As can be seen from the table above, all North East local authorities have experienced slight changes in their rankings. County Durham is the only one that has seen its ranking for the income measure decline since 2007 and has seen the smallest improvement in the employment measure. As these metrics reflect the number of people who are income and employment deprived, (and not the proportion) County Durham remains the most deprived local authority in the north east in terms of the income and employment summary measures.

By dividing the LSOAs national rankings into 10 equal intervals it is possible to give an indication of the distribution of deprived population in County Durham. The following chart gives these results:

Durham City MC

Deprivation

Deprivation by geographic area

Main Points - Durham City MC

Estimated percentage of the population living in deprived areas (Index of Deprivation 2015)

A lower proportion of the population (3.5%) in the Durham City MC live in the top 10% most deprived LSOAs nationally than do across County Durham (10.2%). County Rank = 10 (1=Most Deprived, 14=least deprived).

- This is an increase in the proportion of the population living in deprived LSOAs within the Durham City MC area from 3.3% in the ID2010.

A lower proportion of the population (7.8%) in the Durham City MC live in the top 30% most deprived LSOAs nationally than do across County Durham (42.2%). County Rank = 11 (1=Most Deprived, 14=least deprived).

- This is an increase in the proportion of the population living in deprived LSOAs within the Durham City MC area from 7.6% in the ID2010.

Figure 2: Percentage of the population in Durham City Major Centre by LSOA by deprivation score in the Index of Deprivation:

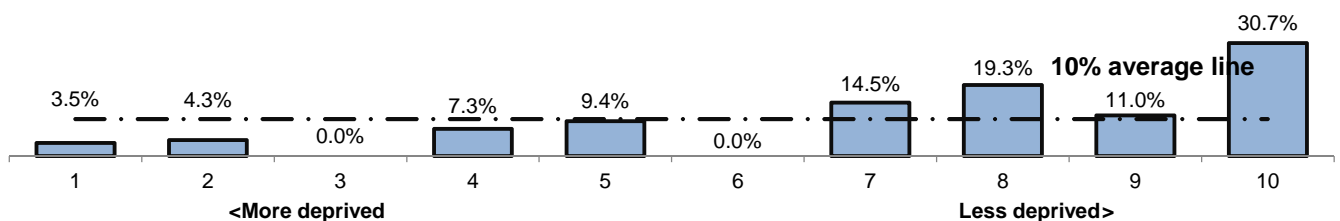


Figure 3: Change in the percentage of Durham City Major Centres population living in deprived LSOAs in County Durham 2004 to 2015 (all LSOAs).

Overall

- ID2004
- ID2007
- ID2010
- ID2015



Durham City MC

Deprivation

Deprivation be geographic area - Durham City MC

Table 2a: Percentage of the resident population living in the top 10% most deprived LSOAs nationally by domain

Area	Overall	Income	Employment	Health	Education
Durham City MC	3.5	3.5	3.5	11.4	3.5
(ID2010)	(3.3)	(3.3)	(3.3)	(3.3)	(7.6)
% change ¹	1.3	1.3	1.3	228.8	-55.5
County Durham	10.2	11.7	25.6	29.9	7.1
(ID2010)	(11.4)	(9.0)	(30.9)	(27.5)	(15.3)
% change ¹	-9.6	31.1	-15.8	10.7	-52.8
England & Wales	10.0	10.0	10.0	10.0	10.0

Area	Housing	Crime	Environment	Income: Child Index	Income: Older Person
Durham City MC	8.8	0.0	0.0	7.8	3.5
(ID2010)	(0.0)	(0.0)	(0.0)	(3.3)	(3.3)
% change ¹	n/a	0.0	0.0	125.1	1.3
County Durham	3.4	4.8	1.0	12.9	4.9
(ID2010)	(1.8)	(4.4)	(0.0)	(0.0)	(0.0)
% change ¹	88.4	9.7	n/a	0.0	0.0
England & Wales	10.0	10.0	10.0	10.0	10.0

Source: Communities and Local Government Index of Deprivation 2015, ONS revised 2012 population estimates. Figures refer to the area and not the communities within the area. 'n/a' division by zero.

1. % change refers to the percentage change in the number of people living in deprived areas between the ID2015 and ID2010.

Durham City MC

Deprivation

Deprivation by geographic area - Durham City MC

Estimated percentage of the population living in deprived areas (Index of Deprivation 2015)
continued

Table 2b: Percentage of the resident population living in the top 30% most deprived LSOAs nationally by domain

Area	Overall	Income	Employment	Health	Education
Durham City MC	7.8	7.8	14.4	32.7	11.4
(ID2010)	(7.6)	(10.3)	(13.7)	(30.4)	(13.1)
% change ¹	-1.1	-27.1	1.9	4.1	-16.2
County Durham	42.2	46.1	62.0	67.5	37.7
(ID2010)	(45.5)	(42.4)	(64.9)	(70.8)	(46.8)
% change ¹	-5.8	10.4	n/a	-3.0	-3.3
England & Wales	30.0	30.0	30.0	30.0	30.0

Area	Housing	Crime	Environment	Income: Child Index	Income: Older Person
Durham City MC	34.8	8.0	4.8	11.4	12.5
(ID2010)	(4.6)	(4.0)	(0.0)	(10.3)	(11.0)
% change ¹	636.2	93.4	n/a	6.5	10.3
County Durham	15.3	15.6	2.8	44.4	38.2
(ID2010)	(8.2)	(21.6)	(0.7)	(34.7)	(40.0)
% change ¹	89.1	-26.5	298.8	n/a	29.9
England & Wales	30.0	30.0	30.0	30.0	30.0

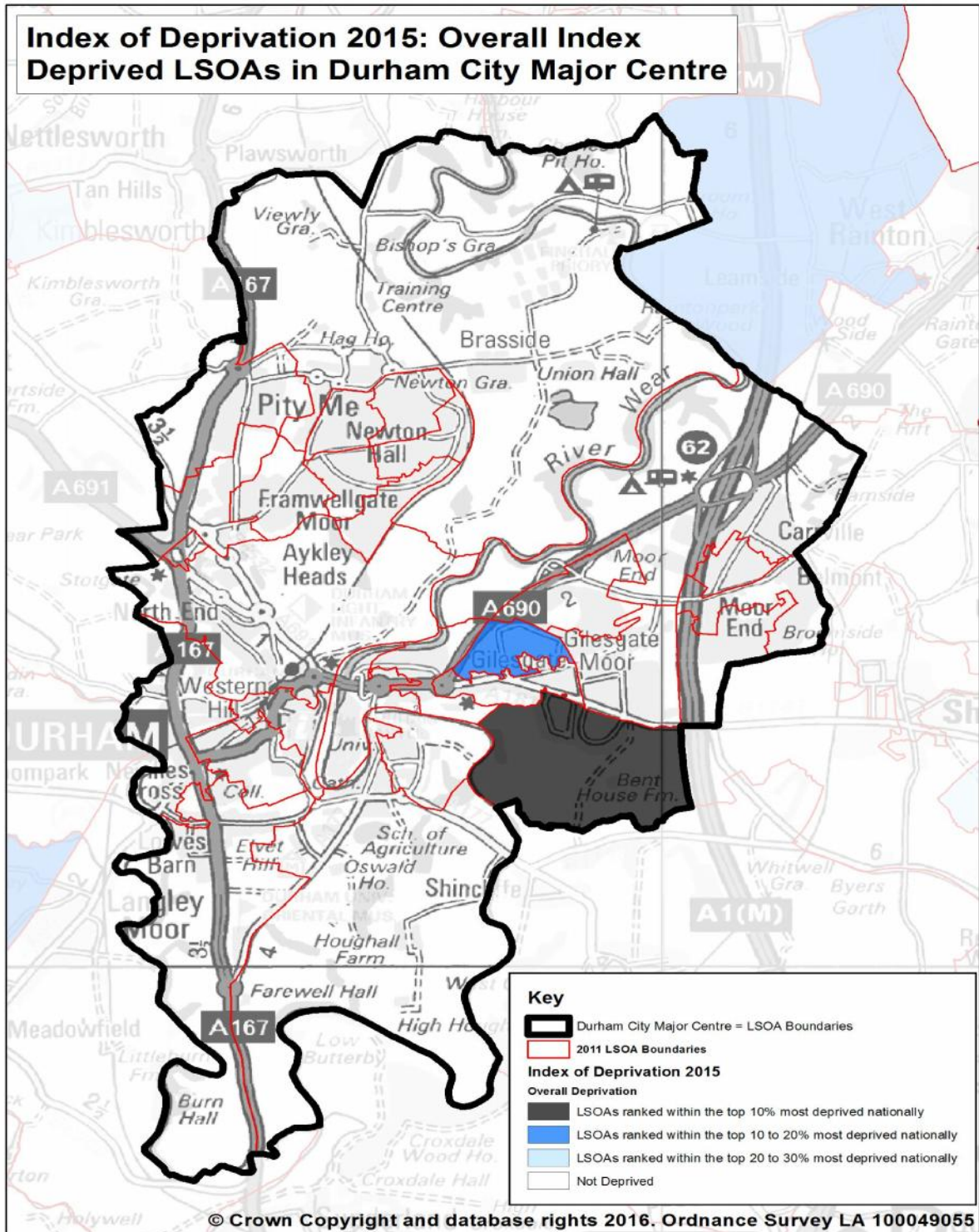
Source: Communities and Local Government Index of Deprivation 2015, ONS revised 2012 population estimates. Figures refer to the area and not the communities within the area. 'n/a' division by zero.

1. % change refers to the percentage change in the number of people living in deprived areas between the ID2015 and ID2010.

Sub-county Statistical Profile
 Summary Sheets
 Durham City MC
 Deprivation



ID2015 top 10%, 10 - 20% and 20 - 30% most deprived LSOAs nationally in the Durham City MC



Durham City MC

People and Place

Contents	Page
Population change (ONS mid-year estimates)	14
Population Structure (ONS mid-year estimates)	15
Dependency ratios (ONS mid-year estimates)	18
Ethnicity (2011 Census)	20
Religion (2011 Census)	21
Occupied households (2011 Census)	22

Population: Change

Population change: percentage change between (select years): and

- N
11
 The overall population of Durham City MC increased by 1.6% between 2010 and 2015.
- N
11
 There has been an increase of 1.1% in the pre-school age group (0 to 4) since 2010 in the Durham City MC.
- N
11
 The number of children aged 5 to 15 decreased by 0.5% between 2010 and 2015 in the Durham City MC.
- N
11
 The number of people of working age (aged 16 to 64) decreased by 0.4% between 2010 and 2015 in the Durham City MC.
- N
11
 Those aged 65 and over increased by 12.2% between 2010 and 2015 in the Durham City MC.
- N
11
 Those aged 85 and over increased by 16.9% between 2010 and 2015 in the Durham City MC.

Table 1a: Population change between 2010 and 2015

Area	% change by age group between 2010 and 2015				
	0-4	5-15	Working Age ¹	Retired ²	85+
Durham City MC	1.1	-0.5	-0.4	12.2	16.9
County Durham	1.1	0.8	-1.2	13.5	12.6
North East	1.1	0.5	-1.1	12.1	11.5
England & Wales	4.5	4.1	1.5	13.3	11.0

[Source: ONS mid year population estimates.](#)

1. Working age is defined as those people aged 16 to 64.
2. Retired is defined as those people aged 65 and over.

Sub-county Statistical Profile
Summary Sheets



Durham City MC

People and Place

Population: Change - continued

Table 1a: Population change between 2010 and 2015

Area	All people
Durham City MC	1.6
County Durham	1.8
North East	1.5
England & Wales	3.9

[Source: ONS mid year population estimates.](#)

1. Working age is defined as those people aged 16 to 64.
2. Retired is defined as those people aged 65 and over.

Population: Age structure

Table 1b: Population counts by age group for 2015

Area	2015 age groups				
	0-4	5-15	Working Age ¹	Retired ²	85+
Durham City MC	1,863	4,087	35,918	8,489	1,056
County Durham	28,446	60,207	327,617	103,425	11,824
North East	150,100	314,917	1,660,407	499,197	60,769
England & Wales	3,610,602	7,349,801	36,588,665	10,336,345	1,374,590

Area	All people
Durham City MC	50,357
County Durham	519,695
North East	2,624,621
England & Wales	57,885,413

[Source: ONS mid year population estimates.](#)

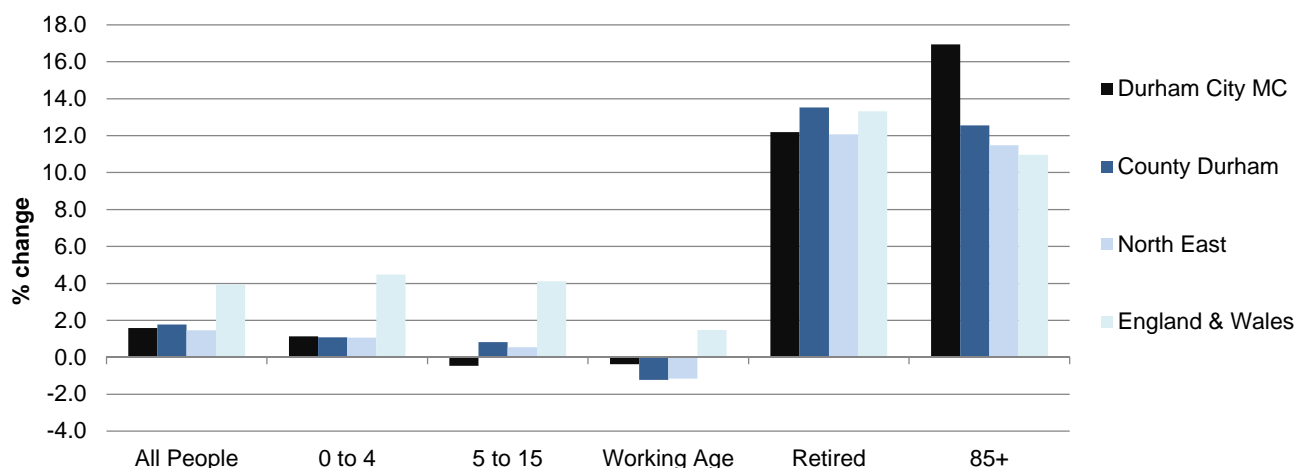
1. Working age is defined as those people aged 16 to 64.
2. Retired is defined as those people aged 65 and over.

Durham City MC

People and Place

Population: Age structure - continued

Figure 1: Population change by age group between 2010 and 2015



Age Groups for (select year):

Resident Population (% of total resident population in the area)

Table 2: Resident Population (% of total resident population in the area) by 5 year age groups

	Durham City MC	County Durham	North East	England & Wales
0 - 4	1,900 (3.7)	28,400 (5.5)	150,100 (5.7)	(6.3)
5 - 9	2,000 (3.9)	28,900 (5.6)	149,200 (5.7)	(6.1)
10 - 14	1,700 (3.5)	25,900 (5.0)	135,800 (5.2)	(5.5)
15 - 19	4,600 (9.1)	30,800 (5.9)	156,800 (6.0)	(5.9)
20 - 24	10,700 (21.2)	37,600 (7.2)	189,200 (7.2)	(6.6)
25 - 29	3,300 (6.5)	30,300 (5.8)	169,300 (6.5)	(6.8)
30 - 34	2,800 (5.5)	30,300 (5.8)	159,800 (6.1)	(6.8)
35 - 39	2,300 (4.7)	27,800 (5.3)	145,100 (5.5)	(6.2)
40 - 44	2,400 (4.8)	32,000 (6.2)	164,900 (6.3)	(6.7)
45 - 49	2,600 (5.2)	37,900 (7.3)	185,300 (7.1)	(7.1)
50 - 54	2,700 (5.4)	39,000 (7.5)	191,100 (7.3)	(6.9)
55 - 59	2,500 (5.0)	35,100 (6.8)	173,700 (6.6)	(5.9)
60 - 64	2,400 (4.7)	32,100 (6.2)	155,600 (5.9)	(5.4)
65 - 69	2,700 (5.3)	33,500 (6.4)	157,100 (6.0)	(5.5)
70 - 74	2,000 (4.0)	24,800 (4.8)	113,500 (4.3)	(4.1)
75 - 79	1,600 (3.3)	19,700 (3.8)	95,400 (3.6)	(3.3)
80 - 84	1,100 (2.2)	13,600 (2.6)	69,100 (2.6)	(2.4)
85+	1,100 (2.1)	11,800 (2.3)	60,700 (2.3)	(2.4)

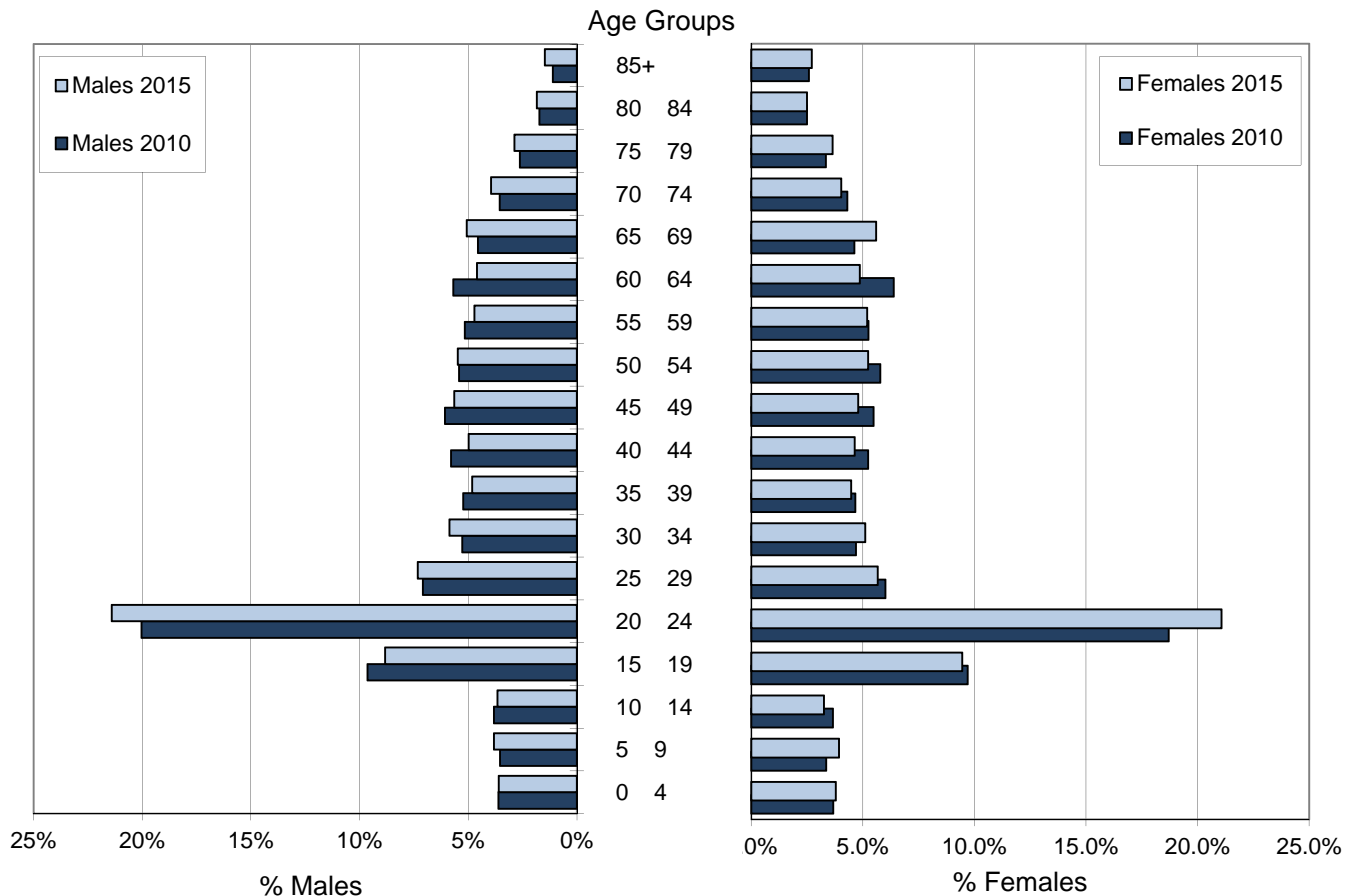
Durham City MC

People and Place

Resident Population by Age: Comparison between 2010 and 2015

Figure 2: Durham City MC: Age Pyramid: 2010/2015:

Percentage of the Durham City MC population by gender and 5 year age groups.



Durham City MC

People and Place

Dependency Ratios

The dependency ratio compares how many people there are in the area who are assumed to be working (that is people aged 16-64) against both the number of children aged 0-15 and those of retirement age (65+).

A high dependency ratio implies that an area is suffering from the effects of its age structure, with children and the elderly unable to contribute to service provision in the ways that those of working age do, potentially putting pressure on local services such as schooling, health, and social care.

Overall ratio

The Durham City MC had a lower overall dependency ratio than County Durham indicating a higher number of people of working age in the area compared to the number of children and retired people in the area when compared to the county overall.

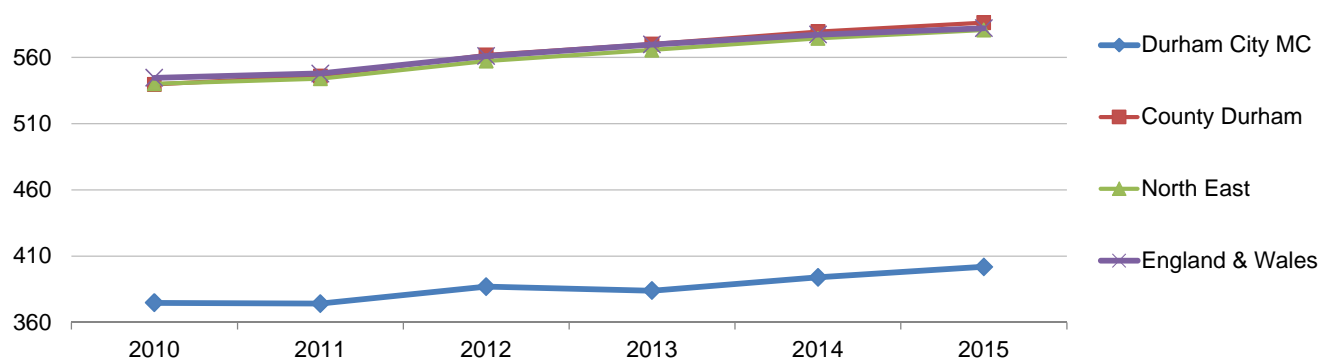
Table 3a: Change in overall dependency ratio 2010 to 2015

Area	2010	2011	2012	2013	2014	2015
Durham City MC	375	374	387	384	394	402
County Durham	540	546	562	570	579	586
North East	540	544	557	566	574	581
England & Wales	545	548	561	570	577	582

[Source: ONS mid year population estimates.](#)

1. Working age is defined as those people aged 16 to 64.
2. Retired is defined as those people aged 65 and over.

Figure 3a: Change in overall dependency ratio 2010 to 2015



Durham City MC

People and Place

Dependency Ratios

Older person ratio

¹¹ The Durham City MC had a lower older person dependency ratio than County Durham indicating a higher number of people of working age in the area compared to the number of retired people in the area when compared to the county overall.

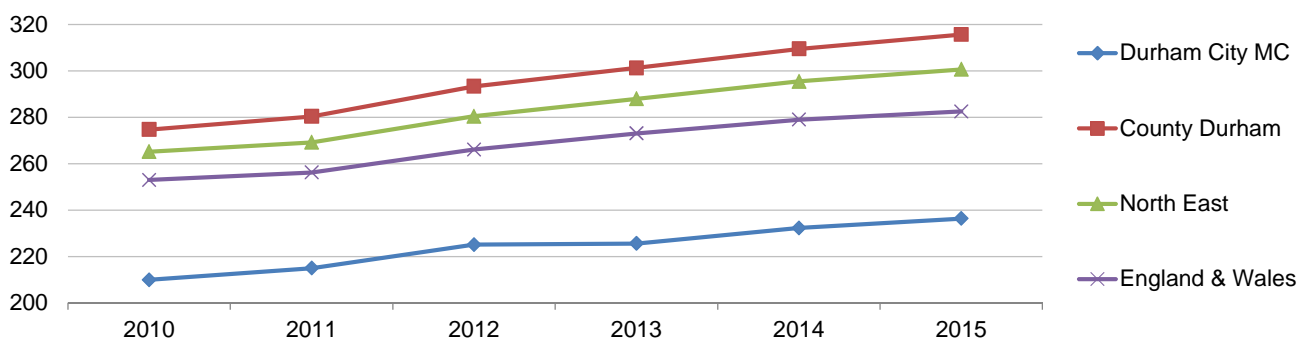
Table 3b: Change in older person dependency ratio 2010 to 2014

Area	2010	2011	2012	2013	2014	2015
Durham City MC	210	215	225	226	232	236
County Durham	275	280	293	301	310	316
North East	265	269	280	288	295	301
England & Wales	253	256	266	273	279	283

[Source: ONS mid year population estimates.](#)

1. Working age is defined as those people aged 16 to 64.
2. Retired is defined as those people aged 65 and over.

Figure 3b: Change in overall dependency ratio 2010 to 2014



Durham City MC

People and Place

Local Diversity

Ethnicity

The proportion of the ethnic population in the Durham City MC increased by 4% points between 2001 and 2011. However numbers are still relatively low with 3370 people living in the area from a non-white ethnic background.

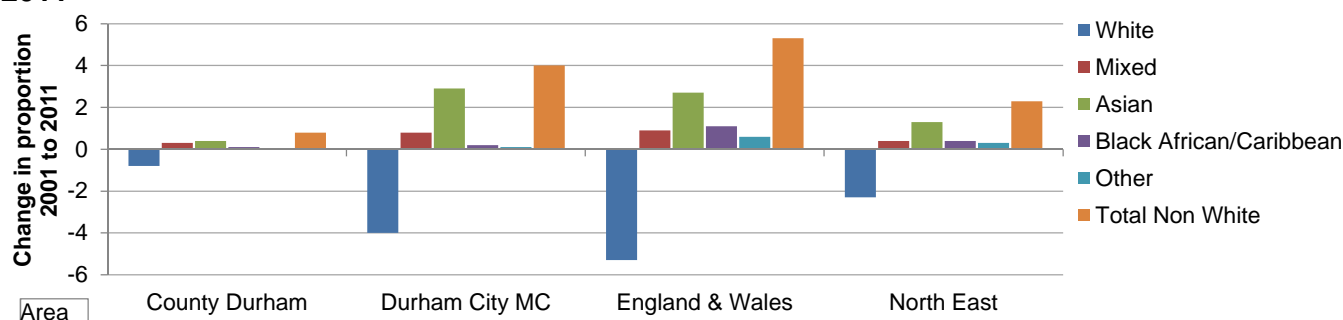
Table 4: Change in the proportion of the ethnic population between 2001 and 2011

Area		White	Mixed	Asian	Black African/ Caribbean
Durham City MC	% change	-4.0	0.8	2.9	0.2
	2011 count	44,699	766	1,943	275
County Durham	% change	-0.8	0.3	0.4	0.1
	2011 count	503,769	3,094	4,856	701
North East		-2.3	0.4	1.3	0.4
England & Wales		-5.3	0.9	2.7	1.1

Area		Other	Non White
Durham City MC	% change	0.1	4.0
	2011 count	386	3,370
County Durham	% change	0.0	0.8
	2011 count	822	9,473
North East		0.3	2.3
England & Wales		0.6	5.3

[Source: 2011 Census \(from NOMIS\)](#)

Figure 4: Change in the proportion (point change) of the ethnic population between 2001 and 2011



Durham City MC

People and Place

Local Diversity - continued

Religion

2011 The proportion of the population with a religion in the Durham City MC decreased by 9.3% points between 2001 and 2011 while the proportion with a Christian religion decreased by 10.5% points. The proportion with a non-Christian religion increased by 2.7% points between 2001 and 2011.

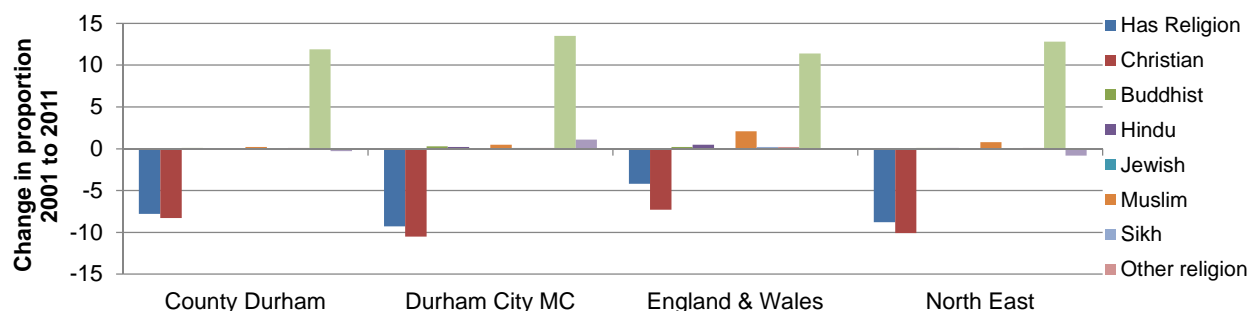
Table 5: Change in proportion of religion between 2001 and 2011 (resident population; 'Religion not stated' and 'Other religion' category not shown)

Area		Has religion	Christian	Buddhist	Hindu
Durham City MC	% change	-9.3	-10.5	0.3	0.2
	2011 count	31,260	29,620	312	252
County Durham	% change	-7.8	-8.3	0.1	0.0
	2011 count	375,599	369,715	1,001	607
North East England & Wales	% change	-8.8	-10.1	0.1	0.1
		-4.2	-7.3	0.2	0.5

Area		Jewish	Muslim	Sikh	No religion
Durham City MC	% change	0.0	0.5	0.1	13.5
	2011 count	86	711	84	13,486
County Durham	% change	0.0	0.2	0.0	11.9
	2011 count	208	1,934	609	107,281
North East England & Wales	% change	0.1	0.8	0.0	12.8
		0.0	2.1	0.2	11.4

[Source: 2011 Census \(from NOMIS\)](#)

Figure 5: change in the proportion (point change) of religion (people) between 2001 and 2011



Area

Sub-county Statistical Profile
Summary Sheets



Durham City MC

People and Place

Occupied Households

In 2011 there were 17,336 occupied household spaces in the Durham City MC ^{¶11} representing 96.3% of all household spaces in the area. This was an increase of 4.9% in the number of occupied spaces between 2001 and 2011.

Table 6a: Change in households between 2001 and 2011

Area	2001		2011	
	All Housheolds	Occupied Households	All Housheolds	Occupied Households
Durham City MC	17,159	16,501	18,005	17,336
County Durham	216,449	207,436	233,537	223,803
North East	1,111,393	1,066,292	1,179,194	1,129,935
England & Wales	22,387,923	21,660,475	24,429,618	23,366,044

Area	% change	
	All Housheolds	Proportion Occupied ¹
Durham City MC	4.9	-0.12
County Durham	7.9	0.00
North East	6.1	0.12
England & Wales	9.1	1.15

[Source: 2011 Census \(from NOMIS\)](#)

1. Percentage change in proportion between 2001 and 2011.

Durham City MC

People and Place

Occupied Households - continued

Table 6b: Proportion of households by household type in 2011

Area	Proportion by household type (%)				
	One person households		One family household		
	Total (1)	Of which: All aged 65+ (% of Total (1))	Total (2)	Of which: All aged 65+ (% of Total (2))	Of which: Lone parent (% of Total (2))
Durham City MC	29.5	42.7	57.9	17.1	12.1
County Durham	31.3	43.6	63.8	13.6	17.6
North East	31.9	42.3	62.4	13.1	19.0
England & Wales	30.2	41.1	61.8	13.2	17.2
Area	Other households				
	Total (3)	Of which: Full time students (% of Total (3))	Of which: All aged 65+ (% of Total (3))		
Durham City MC	12.6	57.0	1.7		
County Durham	4.9	13.7	5.4		
North East	5.7	12.5	4.5		
England & Wales	7.9	7.2	3.6		

[Source: 2011 Census \(from NOMIS\)](#)

Sub-county Statistical Profile Summary Sheets

Durham City MC



Wealthier

Contents	Page
Qualifications (2011 Census)	24
Students in Higher Education Institutions (Higher Education Statistics Agency)	26
Business Units (DCC)	26
Retail Unit Occupancy Rates (DCC)	26
Average House Prices (ONS Experimental House Price Index)	27
Fuel Poverty (Department for Energy and Climate Change)	29
Housing Benefit (Department for Works and Pensions)	30
Worklessness (Department for Works and Pensions)	32
Claimant Count - Working Age (ONS/Job Centre Plus)	34
Claimant Count - Young People (ONS/Job Centre Plus)	36
Job Seekers Allowance - Long Term Claimants (ONS/Job Centre Plus)	38
Place of Employment (2011 Census)	40
Average Weekly Income (ONS Small area estimates 2011/12)	41

Qualifications

In the 16+ population - 2011 Census

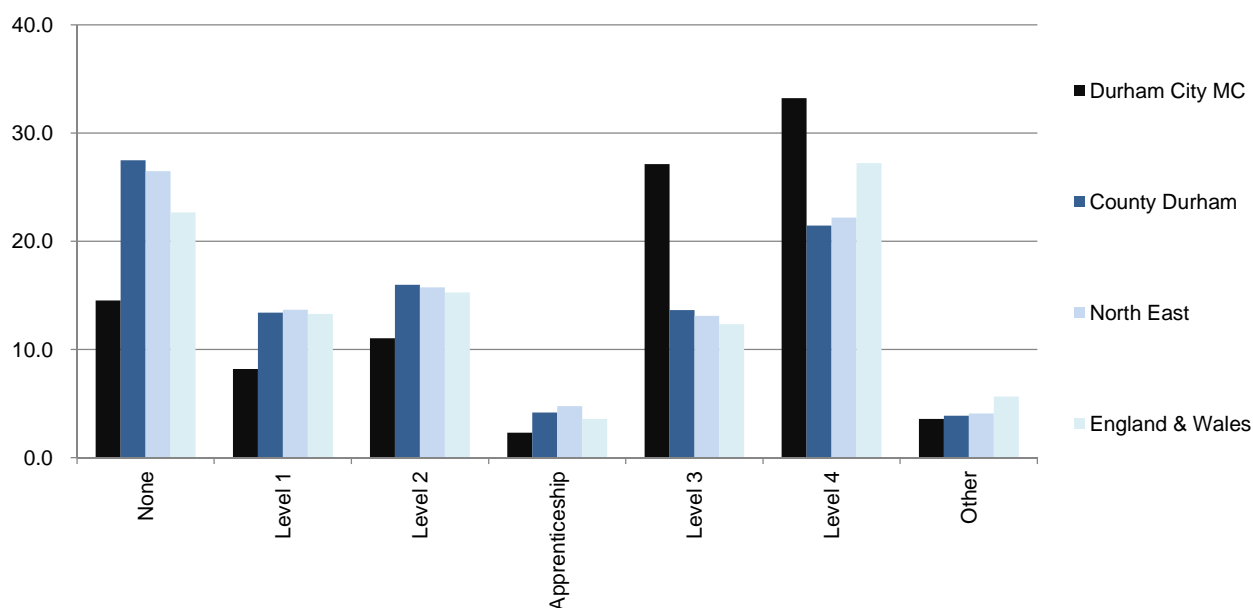
- 33.2% of the 16+ population in the Durham City MC had Level 4 or above qualifications in 2011, higher than the 21.5% across the county. (North East: 22.2%, England & Wales: 27.2%)
- 2.3% of the 16+ population in the Durham City MC were educated to apprenticeship level, lower than the 4.2% across the county. (North East: 4.7%, England & Wales: 3.6%)
- 14.5% of the 16+ population in the Durham City MC had no qualifications, lower than the 27.5% across the county. (North East: 26.5%, England & Wales: 22.7%)

Wealthier

Qualifications

In the 16+ population - 2011 Census

Figure 1: Percentage of the 16+ population by level of qualification in 2011



Notes

Source: [ONS 2011 Census \(NOMIS extract\)](#)

These Groups include:

No Qualifications: No academic or professional qualifications.

Level 1 qualifications: 1-4 O Levels/CSE/GCSEs (any grades), Entry Level, Foundation Diploma, NVQ level 1, Foundation GNVQ, Basic/Essential Skills.

Level 2 qualifications: 5+ O Level (Passes)/CSEs (Grade 1)/GCSEs (Grades A*-C), School Certificate, 1 A Level/ 2-3 AS Levels/VCEs, Intermediate/Higher Diploma, Welsh Baccalaureate Intermediate Diploma, NVQ level 2, Intermediate GNVQ, City and Guilds Craft, BTEC First/General Diploma, RSA Diploma Apprenticeship.

Level 3 qualifications: 2+ A Levels/VCEs, 4+ AS Levels, Higher School Certificate, Progression/Advanced Diploma, Welsh Baccalaureate Advanced Diploma, NVQ Level 3; Advanced GNVQ, City and Guilds Advanced Craft, ONC, OND, BTEC National, RSA Advanced Diploma.

Level 4+ qualifications: Degree (for example BA, BSc), Higher Degree (for example MA, PhD, PGCE), NVQ Level 4-5, HNC, HND, RSA Higher Diploma, BTEC Higher level, Foundation degree (NI), Professional qualifications (for example teaching, nursing, accountancy).

Other qualifications: Vocational/Work-related Qualifications, Foreign Qualifications (Not stated/level unknown).

Durham City MC

Wealthier

Students in Higher Education Institutions

Percentage of the resident 18+ population taking first year places on degree courses 2013/2014 (at UK and overseas universities and higher education establishments)

⌘ Figures for this geography are not available.

In County Durham 1.8% of the 18+ population enrolled for the first time on degree ⌘ courses at university, while across the North East 2% of the 18+ population were enrolled on degree courses with the national figure being 2.4%.

Business Units

Change between 2011 and 2013

⌘ Figures for this geography are not available.

Table 1: Change in business units between 2011 and 2013

Area	2011	2012	2013	% change	Rate (per 10,000 population)
Durham City MC	n/a	n/a	n/a	n/a	n/a
County Durham	14,690	14,815	14,780	0.6	287.4
North East	74,295	75,620	75,365	1.4	289.6
England & Wales	2,271,815	2,329,880	2,344,835	3.2	414.5

Source: NOMIS; BRES data for 2013

Retail Unit Occupancy Rates

Change between 2012 and 2013

⌘ The proportion of occupied retail units in the Durham City MC decreased slightly by 3.2% between 2012 and 2013 from 93% to 90%.

Durham City MC

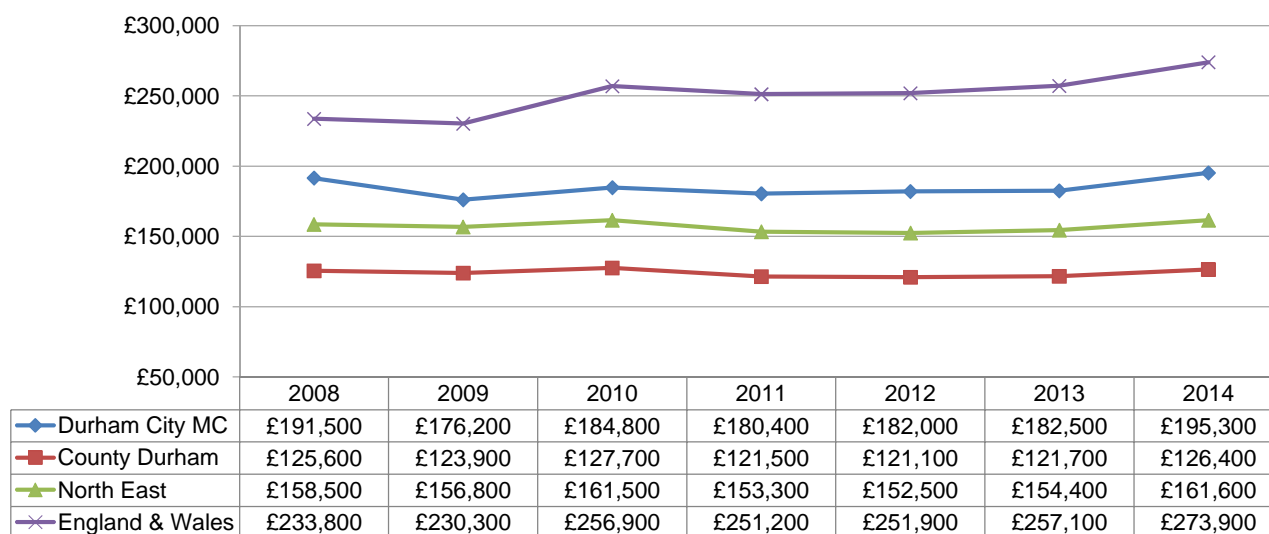
Wealthier

Average house prices

Change between 2008 and 2014

¶ The average house price in the Durham City MC in 2014 was £195,300, an increase of 2% since 2008. Prices in this area are 54.5% above the county average.

Figure 2: House prices since 2008



Source: County and sub-geographies: Land Registry 'Price Paid' dataset. North East and E&W: ONS Experimental House Price Index.

Durham City MC

Wealthier

Fuel Poverty (Households)

Percentage of households in fuel poverty in 2012

10% Rule A household is said to be fuel poor if it needs to spend more than 10 per cent of its income on fuel to maintain an adequate standard of warmth. This is usually defined as 21 degrees for the main living room and 18 degrees for other occupied rooms. Data is available up to 2012.

19.6% of households in the Durham City MC were estimated to be in fuel poverty in 2012. This was higher than the average across the county (17.9%) and a 2.2% rise since 2008.

Percentage of households in fuel poverty in 2014

LIHC Rule New definition from 2011: Under the Low Income High Costs definition, a household is considered to be fuel poor if:

- they have required fuel costs that are above average (the national median level) and,
- were they to spend that amount, they would be left with a residual income below the official poverty line.

12.6% of households in the Durham City MC were estimated to be in fuel poverty in 2014. This was higher than the average across the county (12.2%) and a 18.8% fall since 2011.

Table 2a: Fuel poverty (10% rule) 2008 to 2012: percentage of total households

Area	10% rule				
	2008	2009	2010	2011	2012
Durham City MC	19.2	19.0	18.8	19.1	19.6
County Durham	22.3	25.0	21.9	19.5	17.9
North East	21.2	24.1	21.2	19.0	17.8
England	15.6	18.4	16.4	14.6	13.9

Source: [Department of Energy and Climate Change](#)

Sub-county Statistical Profile
Summary Sheets

Durham City MC



Wealthier

Fuel Poverty (Households) - continued

Percentage of households in fuel poverty in 2014

Table 2b: Fuel poverty (LIHC rule) 2011 to 2014: percentage of total households and % change for both rules

Area	LIHC rule			% change	
	2011	2013	2014	% change 2008 - 2012 10% rule	% change 2011 - 2014 LIHC rule
Durham City MC	15.5	12.3	12.6	2.2	-18.8
County Durham	13.0	11.5	12.2	-19.4	-6.4
North East	12.4	11.8	12.2	-15.8	-1.1
England	10.9	10.4	10.6	-10.6	-3.2

Source: [Department of Energy and Climate Change](#)

Housing Benefit Claims

Change in claims between December 2012 and February 2016

There were 2,143 housing benefit claims in February 2016 in the Durham City MC ^{¶11} representing an estimated 11.9% of all occupied households in the area and a fall of 5.3% in claims since December 2012.

^{¶11} Within this group the number of claims in social housing fell by 4.4% to 1,634 claims, while private rented household claims fell by 7.8% to 509 claims.

Figures across the county show that there was a fall in total claims of 5.3% with ^{¶11} socially rented claims falling by 4.4% and private rented claims rising by 2% over the same period.

Table 3a: Total housing benefit claims February 2016

Area	Claims	% change in claims since December 2012	% of all Dwellings (2011)
Durham City MC	2,143	-5.3	11.9
County Durham	48,076	-2.8	20.6
North East	260,476	-3.7	22.1
England & Wales	4,277,203	-6.1	17.6

Source: Department for Works and Pensions: StatsXplore database derived from the Single Housing Benefit Extract (SHBE) compiled from local authority returns. Census 2011 Household data.

Wealthier

Housing Benefit Claims - continued

Change in claims between December 2012 and February 2016

Table 3b: Social and private rented housing benefit claims February 2016

Area	Social HB Claims (February 2016)			
	Claims	% change in claims since December 2012	% of social dwellings (2011)	% of all Dwellings (2011)
Durham City MC	1,634	-4.4	67.2	9.1
County Durham	32,023	-5.1	71.2	13.7
North East	182,352	-4.9	70.3	15.5
England & Wales	2,874,502	-4.2	69.8	11.8

Area	Private HB Claims (February 2016)			
	Claims	% change in claims since December 2012	% of private dwellings (2011)	% of all Dwellings (2011)
Durham City MC	509	-7.8	14.6	2.8
County Durham	16,053	2.0	57.0	6.9
North East	78,124	-0.9	50.6	6.6
England & Wales	1,402,701	-9.9	36.0	5.8

Source: Department for Works and Pensions: StatsXplore database derived from the Single Housing Benefit Extract (SHBE) compiled from local authority returns. Census 2011 Household data.

Wealthier

Out of Work Benefits (Worklessness)

Percentage of the working age population (16 to 64) claiming key out of work benefits between August 2013 and May 2016

Note: Worklessness figures are represented by the Department for Works (DWP) and Pensions statistical group 'out of work benefits' which includes people claiming JSA, Incapacity Benefit, Employment & Support Allowance (ESA) and 'other' income related benefit claimants; lone parents are also included in this group.

In May 2016 5% (1,790 people) of the working age population (aged 16 to 64) in the ^{£11} Durham City MC were claiming key out of work benefits, compared to 12.2% in the county, 12.6% in the region and 9.1% nationally.

^{£11} This is a fall of 15.2% in the number of claimants since August 2013 compared to falls of 14.7% in the county, 13.4% in the region and 15.4% nationally.

Table 4: Change in the rate of out of work benefit claimants for the 16 to 64 age group since August 2013

Area	Out of Work Benefit Claimants (16 to 64 age group)				
	16 to 64 Population ¹	August 2013 (base year)	May 2014	May 2015	May 2016
Durham City MC	35,918	6.0	5.8	5.2	5.0
Count		(2,110)	(2,010)	(1,860)	(1,790)
County Durham	327,617	14.2	13.2	12.6	12.2
North East	1,660,407	14.4	13.6	12.8	12.6
England & Wales	36,588,665	10.7	10.0	9.3	9.1

Source: Department for Works and Pensions; NOMIS

- 1 Latest ONS Population Estimates for the 16 to 64 age group. Figures vary year on year.
- 2 ONS Claimant Count, 16 to 64 age group, expressed as a % of the resident 16 to 64 population.
- 3 Average of rate between August 2013 and May 2016.
- 4 % change in the claimants between August 2013 and May 2016.

Durham City MC

Wealthier

Out of Work Benefits (Worklessness) - continued

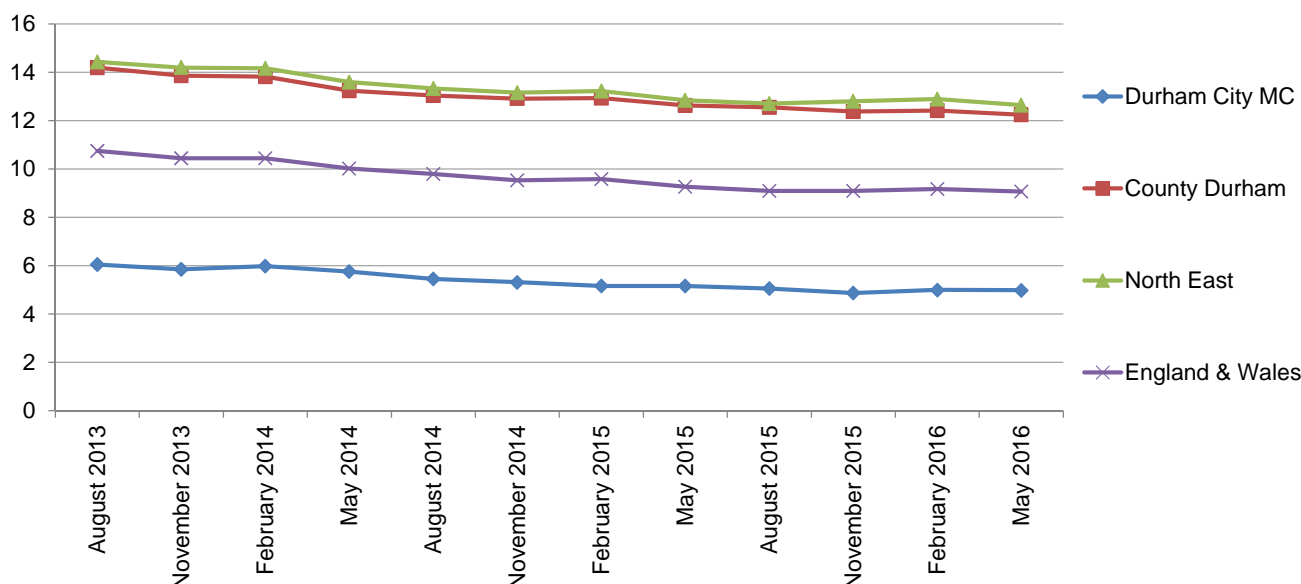
Table 4 (continued): Change in the rate of out of work benefit claimants for the 16 to 64 age group since August 2013

Area	16 to 64 Population ¹	3 Year Average of Rate ³	% Change ⁴ in claimants
Durham City MC	35,918	5.4	-
County Durham	327,617	13.0	-14.7
North East	1,660,407	13.3	-13.4
England & Wales	36,588,665	9.7	-15.4

Source: Department for Works and Pensions; NOMIS

- 1 Latest ONS Population Estimates for the 16 to 64 age group. Figures vary year on year.
- 2 ONS Claimant Count, 16 to 64 age group, expressed as a % of the resident 16 to 64 population.
- 3 Average of rate between August 2013 and May 2016.
- 4 % change in the claimants between August 2013 and May 2016.

Figure 3: Change in the rate out of work benefit claimants since August 2013



Sub-county Statistical Profile Summary Sheets



Durham City MC

Wealthier

Claimant Count (Experimental statistics: Job Seekers Allowance (JSA) + Universal Credit claimants (UC))

Working Age (aged 16 to 64)

Percentage of the working age population (16 to 64) claiming JSA or UC between December 2013 and November 2016

Note: The roll out of Universal Credit (UC) has led ONS/DWP to change their headline Claimant Count measure. Previously the Claimant Count reflected solely the number of people claiming JSA. It now includes a count of those people claiming UC and can be used as a proxy to measure unemployment at a sub-county level. Figures for the electoral divisions are not currently available.

¶ In November 2016 0.9% (335 people) of the working age population (aged 16 to 64) in the Durham City MC were claiming JSA or UC, compared to 2.4% in the county, 3% in the region and 1.8% nationally.

¶ This is a fall of 33% since December 2013 compared to falls of 34.2% in the county, 30.3% in the region and 37.3% nationally.

Table 5: Change in the ONS Claimant Count rate: percentage of the 16 to 64 age group since December 2013

Area	Claimant Count (16 to 64 age group) - % ² (count)				
	16 to 64 Population ¹	December 2013 (base year)	November 2014	November 2015	November 2016
Durham City MC	35,918	1.4	0.9	0.8	0.9
Count		(500)	(315)	(275)	(335)
County Durham	327,617	3.6	2.4	2.1	2.4
North East	1,660,407	4.3	3.1	2.8	3.0
England & Wales	36,588,665	2.9	2.0	1.7	1.8

Source: Department for Works and Pensions; NOMIS

- 1 Latest ONS Population Estimates for the 16 to 64 age group. Figures vary year on year.
- 2 ONS experimental Claimant Count, 16 to 64 age group, expressed as a % of the resident 16 to 64 population.
- 3 Average of rate between December 2013 and November 2016.
- 4 % change in the claimants between December 2013 and November 2016.

Durham City MC

Wealthier

Claimant Count (Experimental statistics: Job Seekers Allowance (JSA) + Universal Credit claimants (UC)) - continued

Working Age (aged 16 to 64)

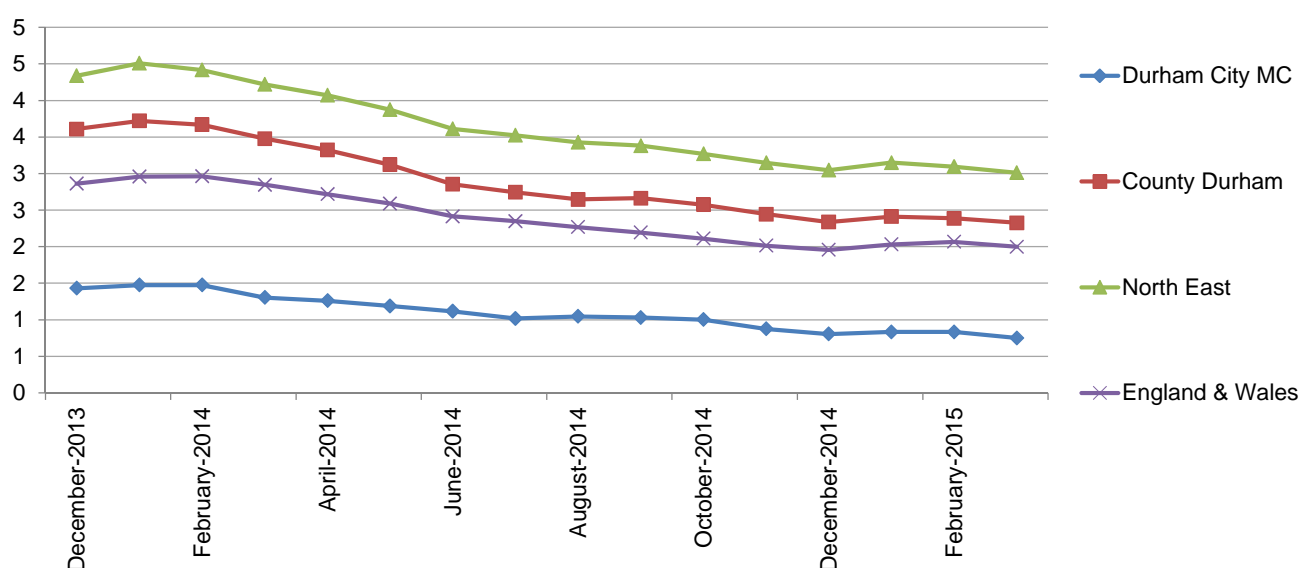
Table 5 (continued): Change in the ONS Claimant Count rate: percentage of the 16 to 64 age group since December 2013

Area	16 to 64 Population ¹	3 Year Average of Rate ³	% Change ⁴ in claimants
Durham City MC	35,918	0.9	-
Count		-	-33.0
County Durham	327,617	2.5	-34.2
North East	1,660,407	3.2	-30.3
England & Wales	36,588,665	2.1	-37.3

Source: Department for Works and Pensions; NOMIS

- 1 Latest ONS Population Estimates for the 16 to 64 age group. Figures vary year on year.
- 2 ONS experimental Claimant Count, 16 to 64 age group, expressed as a % of the resident 16 to 64 population.
- 3 Average of rate between December 2013 and November 2016.
- 4 % change in the claimants between December 2013 and November 2016.

Figure 4: Change in working age ONS Claimant Count rate since December 2013



Sub-county Statistical Profile Summary Sheets

Durham City MC



Wealthier

Claimant Count (Experimental statistics: Job Seekers Allowance (JSA) + Universal Credit claimants (UC)) continued

Young People (aged 16 to 24)

Percentage of young people (aged 24 and under) claiming JSA or UC between December 2013 and November 2016

Note: The roll out of UC has led ONS/DWP to change their headline Claimant Count measure. Previously the Claimant Count reflected solely the number of people claiming JSA. It now includes a count of those people claiming UC and can be used as a proxy to measure unemployment at a sub-county level. Figures for the electoral divisions are not currently available.

In November 2016 0.5% (80 people) of young people (aged 24 and under) in the ^{N11} Durham City MC were claiming JSA, compared to 3.4% in the county, 3.9% in the region and 2.2% nationally.

^{N11} This is a fall of 44.8% since December 2013 compared to falls of 39.2% in the county, 40% in the region and 44.7% nationally.

Table 6: Change in the ONS Claimant Count rate: percentage of the 24 and under age group since December 2013

Area	Under 24 Population ¹	Claimant count (aged 24 and under) - % ² (count)			
		December 2013 (base year)	November 2014	November 2015	November 2016
Durham City MC	12,615	1.1	0.5	0.4	0.5
Count		(145)	(80)	(60)	(80)
County Durham	61,425	5.7	3.8	2.9	3.4
North East	318,692	6.4	4.4	3.5	3.9
England & Wales	6,537,491	3.9	2.6	2.1	2.2

Source: Department for Works and Pensions; NOMIS

- 1 Latest ONS Population Estimates for the 16 to 24 age group. Figures vary year on year.
- 2 ONS experimental Claimant Count, 16 to 24 age group, expressed as a % of the resident 18 to 24 population.
- 3 Average of rate between January 1900 and January 1900.
- 4 % change in the claimants between January 1900 and January 1900.

Durham City MC

Wealthier

Claimant Count (Experimental statistics: Job Seekers Allowance (JSA) + Universal Credit claimants (UC)) continued

Young People (aged 16 to 24)

Percentage of young people (aged 24 and under) claiming JSA or UC between December 2013 and November 2016

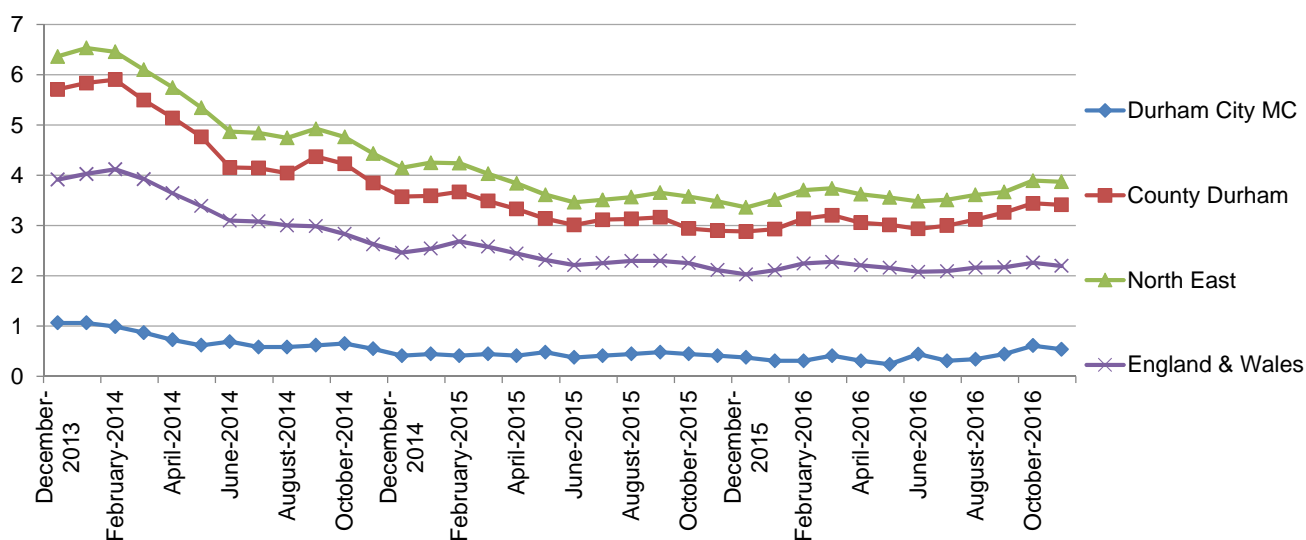
Table 6 (continued): Change in the ONS Claimant Count rate: percentage of the 24 and under age group since December 2013

Area	Under 24 Population ¹	3 Year Average of Rate ³	% Change ⁴ in claimants
Durham City MC	12,615	0.5	-
Count		-	-44.8
County Durham	61,425	3.7	-39.2
North East	318,692	4.3	-40.0
England & Wales	6,537,491	2.6	-44.7

Source: Department for Works and Pensions; NOMIS

- 1 Latest ONS Population Estimates for the 16 to 24 age group. Figures vary year on year.
- 2 ONS experimental Claimant Count, 16 to 24 age group, expressed as a % of the resident 18 to 24 population.
- 3 Average of rate between December 2013 and November 2016.
- 4 % change in the claimants between December 2013 and November 2016.

Figure 5: Change in the young person ONS Claimant Count rate since December 2013



Wealthier

Job Seekers Allowance: Long Term Claimants (12 months or more): Working Age (aged 16 to 64)

Percentage of the working age population (16 to 64) claiming JSA for 12 months or more, between December 2013 and November 2016

Note: UC was rolled out across the county in September 2015 for single people with no dependents. Therefore long term data is not yet available. These figures are based upon the number of people claiming JSA for 12 months or longer.

In November 2016 0.1% (45 people) of the working age population (aged 16 to 64) in ¹¹¹the Durham City MC had been claiming JSA for 12 months or more, compared to 0.5% in the county, 0.7% in the region and 0.4% nationally.

¹¹¹ This is a fall of 75.7% in the area compared to a decrease of 62.7% in the county, 56% decrease in the region and 58.1% decrease nationally.

Table 7: Change in long term JSA claimants: percentage of the 16 to 64 age group since December 2013

Area	16 to 64 Population ¹	Long Term JSA Claimants (16 to 64 age group) - % ² (count)			
		December 2013 (base year)	November 2014	November 2015	November 2016
Durham City MC	35,918	0.5	0.3	0.2	0.1
Count		(185)	(110)	(55)	(45)
County Durham	327,617	1.3	0.8	0.5	0.5
North East	1,660,407	1.5	1.0	0.7	0.7
England & Wales	36,588,665	0.9	0.6	0.4	0.4

Source: Job Centre Plus; NOMIS

- 1 Latest ONS Population Estimates for the 16 to 64 age group. Figures vary year on year.
- 2 JSA claimant count, 16 to 64 age group, expressed as a % of the resident 16 to 64 population.
- 3 Average of rate between December 2013 and November 2016.
- 4 % change in the claimants between December 2013 and November 2016.

Durham City MC

Wealthier

Job Seekers Allowance: Long Term Claimants (12 months or more): Working Age (aged 16 to 64)

Percentage of the working age population (16 to 64) claiming JSA for 12 months or more, between December 2013 and November 2016

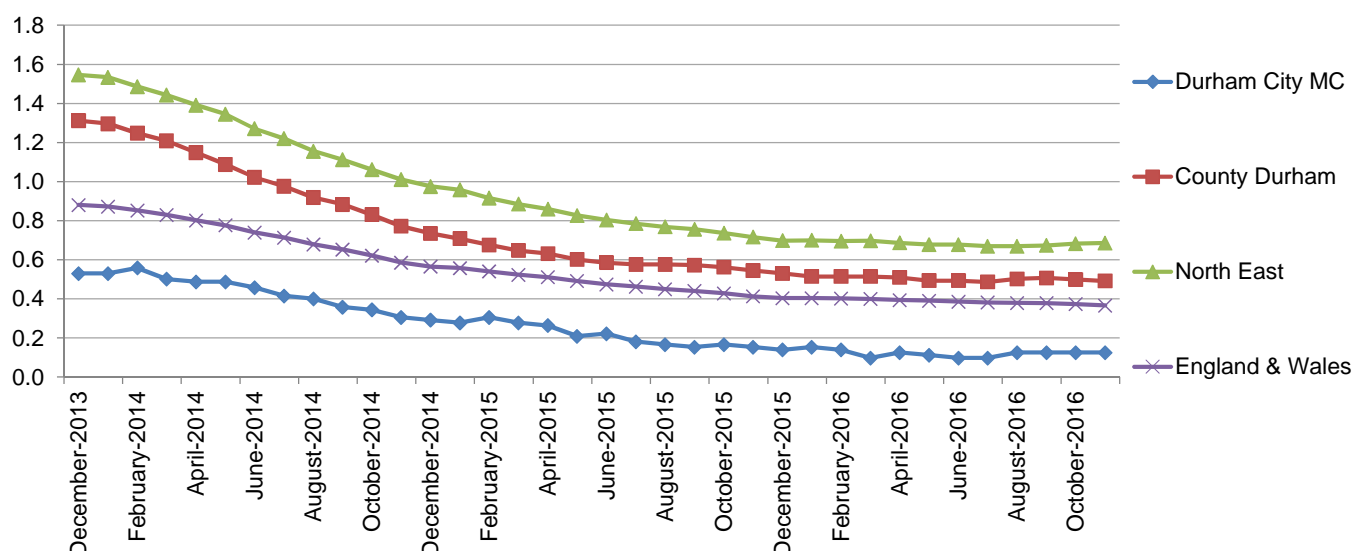
Table 7 (continued): Change in long term JSA claimants: percentage of the 16 to 64 age group since December 2013

Area	16 to 64 Population ¹	3 Year Average of Rate ³	% Change ⁴ in claimants
Durham City MC	35,918	0.3	-
County Durham	327,617	0.7	-75.7
North East	1,660,407	0.9	-62.7
England & Wales	36,588,665	0.5	-58.1

Source: Job Centre Plus; NOMIS

- 1 Latest ONS Population Estimates for the 16 to 64 age group. Figures vary year on year.
- 2 JSA claimant count, 16 to 64 age group, expressed as a % of the resident 16 to 64 population.
- 3 Average of rate between December 2013 and November 2016.
- 4 % change in the claimants between December 2013 and November 2016.

Figure 6: Change in the Long Term JSA claimant rate since December 2013



Sub-county Statistical Profile Summary Sheets

Durham City MC



Wealthier

Workday Population Change (2011 Census)

Note: The workday population is an estimate of the population during the working day. It includes everybody who works in an area, wherever they usually live, and all respondents who live in the area but do not work.

The following population groups are excluded from the workday population of an area:

- Those living in England and Wales but working in Scotland, Northern Ireland, outside the UK or on offshore installations,
- Those with a place of work in England and Wales but who are not usually resident in England and Wales, and
- Short-term residents

Table 9: difference between the resident based population and the workday population

Area		% change by age group			
		0-4	5-15	Working Age ¹	Retired ²
Durham City MC	Resident	1,863	4,087	35,918	8,489
	Workday	1,787	3,782	56,070	7,678
	% difference	4.3%	8.1%	-35.9%	10.6%
County Durham	Resident	28,446	60,207	327,617	103,425
	Workday	28,574	59,410	302,264	91,921
	% difference	-0.4%	1.3%	8.4%	12.5%
North East	Resident	150,100	314,917	1,660,407	499,197
	Workday	149,843	312,594	1,656,136	449,330
	% difference	0.2%	0.7%	0.3%	11.1%
England & Wales	Resident	3,610,602	7,349,801	36,588,665	10,336,345
	Workday	3,496,750	7,082,382	36,163,953	9,220,011
	% difference	3.3%	3.8%	1.2%	12.1%

Source: ONS 2011 Census (NOMIS extract)

1. Working age is defined as those people aged 16 to 64.

2. Retired is defined as those people aged 65 and over.

Sub-county Statistical Profile
Summary Sheets

Durham City MC



Wealthier

Workday Population Change (2011 Census) - continued

Table 9 (continued): difference between the resident based population and the workday population

Area		85+	All People
Durham City MC	Resident	1,056	50,357
	Workday	914	69,317
	% difference	15.5%	-27.4%
County Durham	Resident	11,824	519,695
	Workday	10,811	482,169
	% difference	9.4%	7.8%
North East	Resident	60,769	2,624,621
	Workday	55,369	2,567,903
	% difference	9.8%	2.2%
England & Wales	Resident	1,374,590	57,885,413
	Workday	1,254,451	55,963,096
	% difference	9.6%	3.4%

Source: [ONS 2011 Census \(NOMIS extract\)](#)

1. Working age is defined as those people aged 16 to 64.
2. Retired is defined as those people aged 65 and over.

Wealthier

Average Weekly Income and Median House Prices

Estimated average weekly income and median house prices for small areas: 2007_08 and 2011_12

Note: These data contain statistics of model-based small area income estimates for 2011/12, following the previous estimates of income for 2007/8. The small area income estimates are available for middle layer super output Areas (MSOAs) in England and Wales.

Estimates by geography are produced using a 'best fit' approach with the MSOA boundaries. In the case of the AAPs some MSOAs may cover more than one AAP and therefore be included in those areas estimates.

Estimates of average income are produced for 2011/12 and 2007/08, on MSOAs for the following four income types:

- Total household weekly income.
- Net household weekly income.
- Net household weekly income before housing costs.
- Net household weekly income after housing costs.
- Net weekly income (£) Housing Affordability.
- Median house price.
- House price to income ratio.

For further information on this dataset and explanations on the above indicators:
<http://www.ons.gov.uk/ons/rel/ness/small-area-model-based-income-estimates/2011-12/index.html>

Wealthier

Average Weekly Income and Median House Prices- continued

Estimated average weekly income and median house prices for small areas: 2007_08 and 2011_12

£11 Figures for this geography are not available.

£11 Figures for this geography are not available.

£11 Figures for this geography are not available.

£11 Figures for this geography are not available.

- Figures for this geography are not available.
- Figures for this geography are not available.
- Figures for this geography are not available.
- Figures for this geography are not available.

Durham City MC

Wealthier

Average Weekly Income and Median House Prices- continued - continued

Estimated average weekly income and median house prices for small areas: 2007_08 and 2011_12

Table 9: Small area (MSOA) weekly income and housing estimates for 2011/12

Area	Total weekly income (£)	Net weekly income (£)	Difference in NET income and Net income after housing costs (£) ¹	Median house price, 2014 (£)	House price to income ratio (lower = more affordable)
Durham City MC	n/a	n/a	n/a	n/a	n/a
County Durham	£589	£456	£49	£102,500	225
North East	£560	£439	£53	£118,000	269
England & Wales	£705	£532	£81	£181,300	341

Area	% Change Total weekly income 2007/08 to 2011/12	% Change Net weekly income 2007/08 to 2011/12	% Change Net income before housing costs 2007/08 to 2011/12
Durham City MC	n/a	n/a	n/a
County Durham	6.28	1.00	11.26
North East	5.73	2.07	10.44
England & Wales	11.91	4.37	10.22

Source: ONS Small Area Model-Based Income Estimates

¹ Net household weekly income after housing costs (equivalised) is composed of the same elements of net household weekly income but is subject to the following deductions prior to the OECD's equivalisation scale being applied:

- rent (gross of housing benefit);
- water rates, community water charges and council water charges;
- mortgage interest payments (net of any tax relief);
- structural insurance premiums (for owner occupiers); and
- ground rent and service charges.

Sub-county Statistical Profile
Summary Sheets



Durham City MC

Children and Young People

Contents	Page
Key Stage 2 Attainment (Department for Education)	44
Key Stage 4 Attainment (Department for Education)	46
Child Poverty (HM Revenue & Customs)	47

Note The figures quoted below for pupil attainment are estimates based upon the academic achievement of pupils who live in the area. Therefore these figures will differ from those normally quoted which are for academic achievement by pupils attending schools in the county. Please note that some pupils attend schools outside their area of residence and even schools outside of the county, in a few cases. Similarly some pupils attending schools in the county do not reside in the county. North East and England figures refer to ALL state funded schools.

Key Stage 2 Attainment

Note The measure of KS2 attainment was altered during the academic year 2012/13 by measuring reading, writing and grammar as separate elements of English, which was the composite measure used prior to this year. Therefore only data from 2012/13 to 2014/15 are included in this report.

Main points:

¶ In 2014/15 89.1% of KS2 pupils living in the Durham City MC achieved level 4 or above in Reading, Writing and Maths. This is higher than the 81.7% recorded across County Durham and higher than the 83.2% recorded in 2012/13 in the area. (2014/15 North East= 82%, England= 81%)

¶ In 2014/15 95.2% of KS2 pupils living in the Durham City MC achieved level 4 or above in Reading. This is higher than the 90.6% recorded across County Durham and higher than the 90.2% recorded in 2012/13 in the area. (2014/15 North East= 90%, England= 91%)

¶ In 2014/15 93% of KS2 pupils living in the Durham City MC achieved level 4 or above in Writing. This is higher than the 86.8% recorded across County Durham and higher than the 87.5% recorded in 2012/13 in the area. (2014/15 North East= 88%, England= 94%)

¶ In 2014/15 93.3% of KS2 pupils living in the Durham City MC achieved level 4 or above in Maths. This is higher than the 89.4% recorded across County Durham and higher than the 89.9% recorded in 2012/13 in the area. (2014/15 North East= 89%, England= 90%)

Durham City MC

Children and Young People

Key Stage 2 Attainment - continued

Figure 1a: Percentage of KS2 pupils achieving level 4 or above in: Reading, Writing and Maths

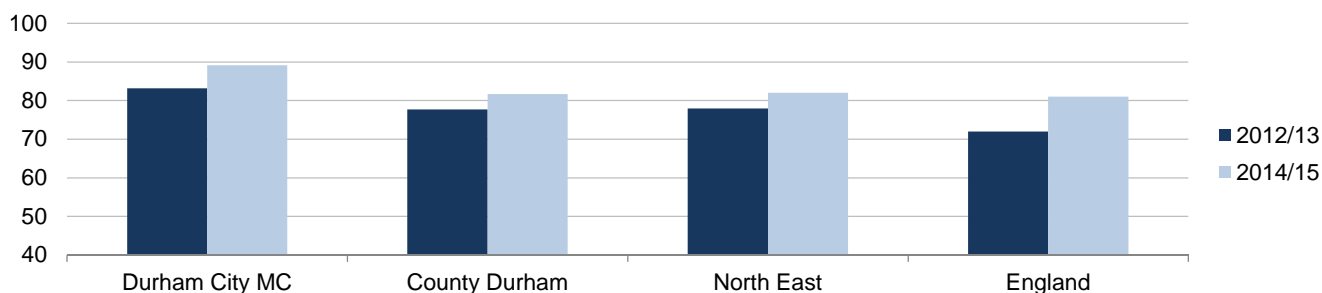


Figure 1b: Percentage of KS2 pupils achieving level 4 or above in: Reading

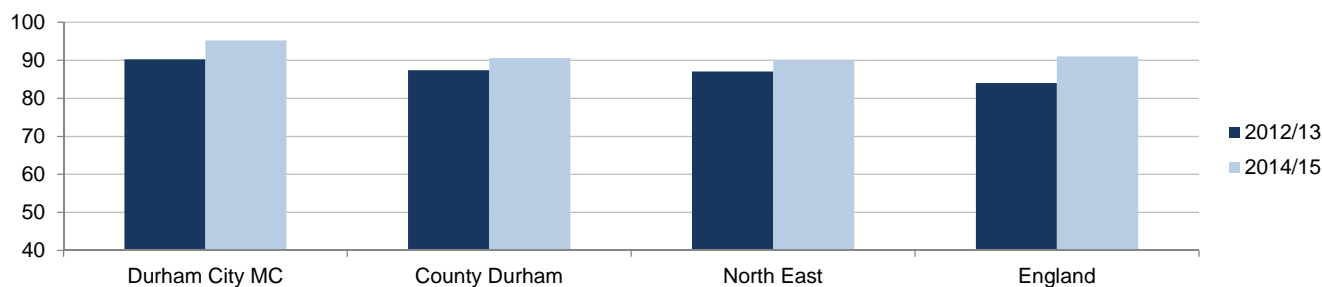


Figure 1c: % KS2 pupils achieving level 4 or above in: Writing

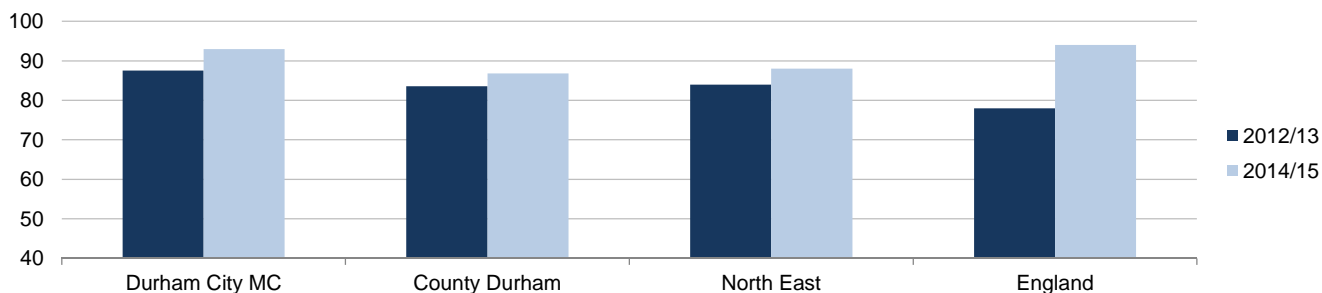
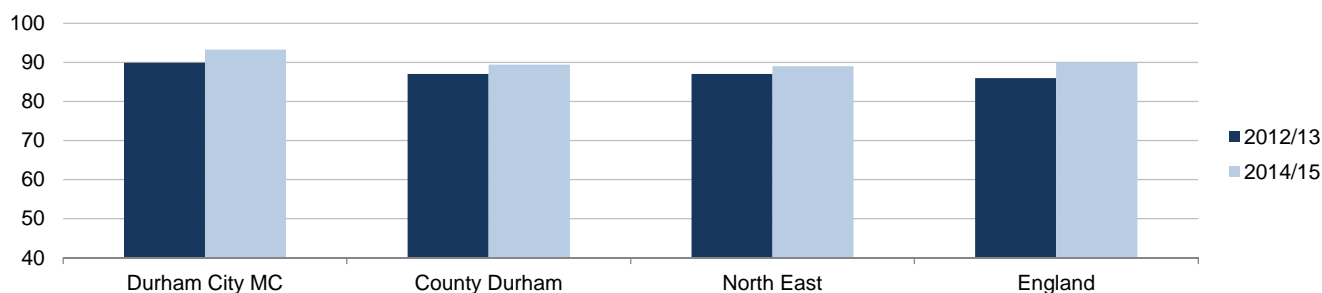


Figure 1d: Percentage of KS2 pupils achieving level 4 or above in: Maths



Source: [Department for Education](#)

Durham City MC

Children and Young People

Key Stage 4 Attainment

^{N11} In 2014/15 69.1% of KS4 pupils living in the Durham City MC achieved 5 or more grade A-C GCSE's. This is higher than the 65.3% recorded across County Durham and lower than the 72.2% recorded in 2013/14 in the area. (2014/15 North East= 64.9%, England= 66.5%).

^{N11} In 2014/15 62.9% of KS4 pupils living in the Durham City MC achieved 5 or more grade A-C GCSE's (including English and Maths). This is higher than the 55.3% recorded across County Durham and lower than the 67.4% recorded in 2013/14 in the area. (2014/15 North East= 53.8%, England= 57.1%).

Figure 2a: Percentage of KS4 pupils achieving 5 or more A-C GCSE's

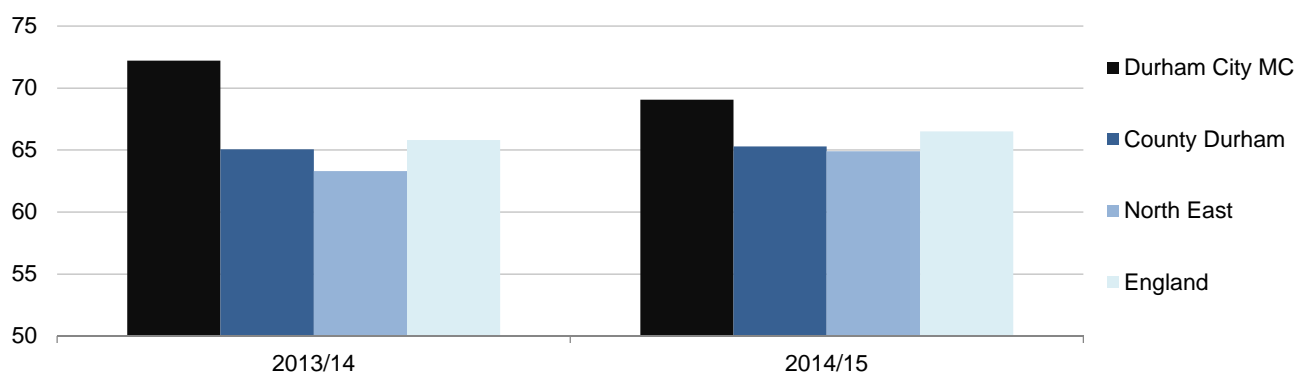
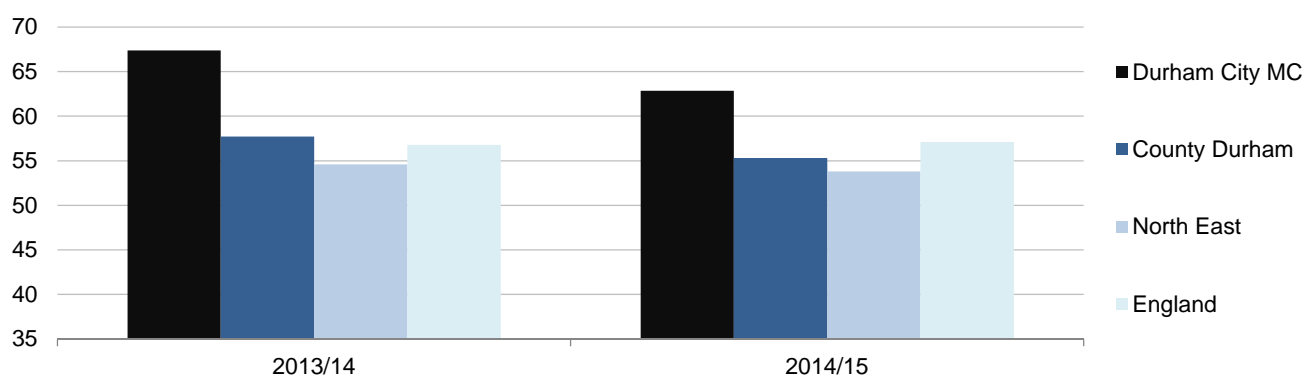


Figure 2b: Percentage of KS4 pupils achieving 5 or more A-C GCSE's - including English and Maths



Source: [Department for Education](#)

Durham City MC

Children and Young People

Child Poverty - 2009 to 2013

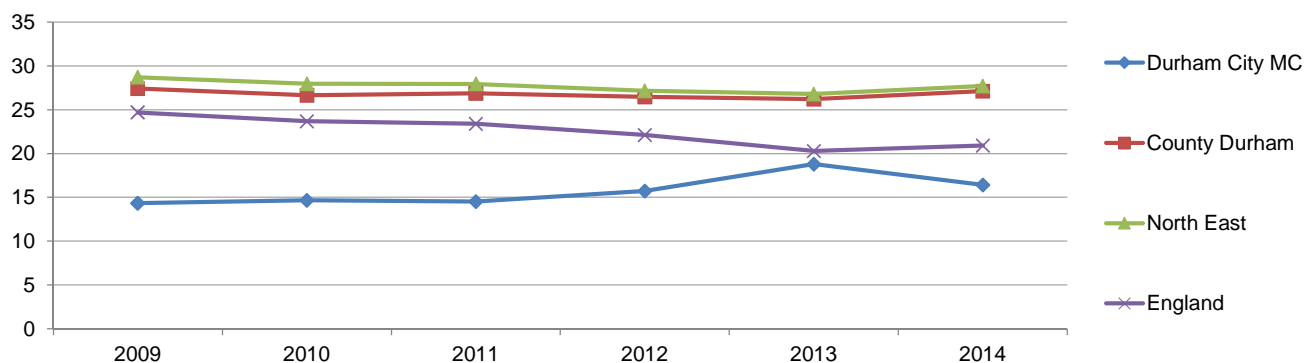
(Children in families receiving Working Tax Credits and Child Tax Credits, and income <60% median income)

Note This indicator provides data on the number/percentage of children living in families either in receipt of out-of-work benefits or in receipt of tax credits with a reported income which is less than 60 per cent of national median income. NB. Until 2013 this indicator was known as Child Poverty (NI 116). This measure provides a broad proxy for The Households Below Average Income (HBAI) measure of national child poverty for small areas down to the LSOA level. The HBAI measure is currently only available for local authorities and above. The base population (denominator) for this percentage is the number of children living in families claiming child benefit.

Children age 0 to 4

An estimated 305 children aged between 0 and 4 in families were in poverty in the Durham City MC in 2014 representing 16.4% of young children in families claiming ^{NI11} child benefit in the area. This is lower than the 27.1% recorded across County Durham in 2014 and higher than the 14.3% recorded in 2009 in the area. (2014 North East= 27.7%, England= 20.9%)

Figure 3a: Change in the percentage of the number of children aged 0-4 in families in poverty 2009 to 2014



Durham City MC

Children and Young People

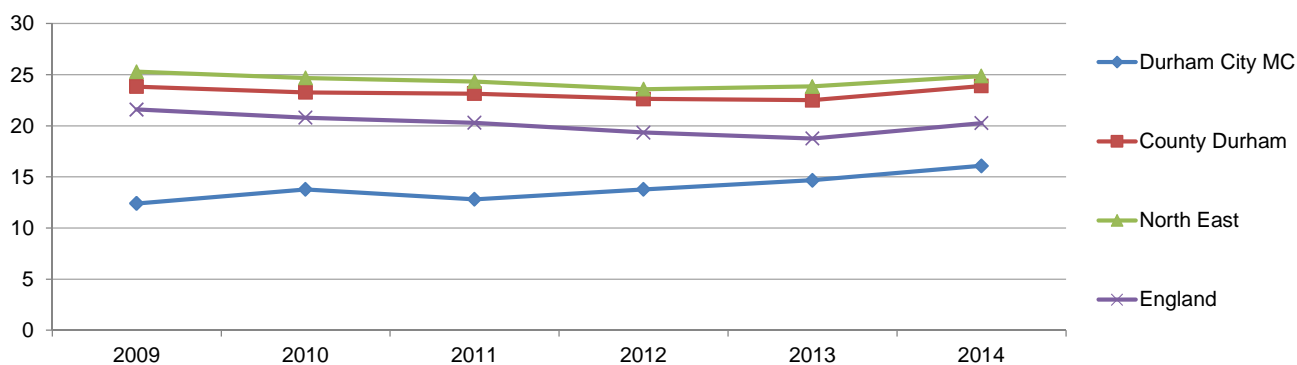
Child Poverty - 2009 to 2014

(Children in families receiving Working Tax Credits and Child Tax Credits, and income <60% median income)

Children age under 16

An estimated 820 children aged under 16 in families were in poverty in the Durham City MC in 2014 representing 16.1% of children in families claiming child benefit in the N11 area. This is lower than the 23.9% recorded across County Durham in 2014 and higher than the 12.4% recorded in 2009 in the area. (2014 North East= 24.9%, England= 20.3%)

Figure 3a: Change in the percentage of the number of children aged under 16 in families in poverty 2009 to 2014



Source: HM Revenue & Customs

Durham City MC

Healthier

Contents	Page
Limiting Long Term Illness or Disability (2011 Census)	49
General Health (2011 Census)	50
Provision of Unpaid Care (2011 Census)	51
Disability Living Allowance (Department for Works and Pensions (DWP))	52
Personal Independence Payments (PIPs) (DWP)	54
Premature Mortality (Primary Care Mortality Database)	55

Limiting Long Term Illness or Disability (LLTI) - 2011 Census

LLTI in the resident population

N11 In the 2011 Census 7,890 people recorded themselves as having a LLTI that limited day to day activities in the Durham City MC representing 16.4% of the resident population in the area. This was lower than the 23.6% recorded across County Durham.

N11 Within this group 3,815 people of working age (aged 16 to 64) recorded themselves as having a LLTI that limited day to day activities in the Durham City MC representing 10.9% of the resident working age population in the area. This was lower than the 17.8% recorded across County Durham.

Table 1a: Limiting Long Term Illness or Disability (LLTI) - percentage of the resident population in 2011 (Census)

Area	Total Population (2011 Census)	Total	
		Day-to-day activities limited (%)	Day-to-day activities not limited (%)
Durham City MC		16.4	83.6
Count	48,069	(7,890)	(40,179)
County Durham	513,242	23.6	76.4
North East	2,596,886	21.6	78.4
England & Wales	56,075,912	17.9	82.1

Source: [ONS 2011 Census \(NOMIS extract\)](#)

Durham City MC

Healthier

Limiting Long Term Illness or Disability (LLTI) - 2011 Census

LLTI in the resident population

Table 1b: Limiting Long Term Illness or Disability (LLTI) - percentage of the working age (16 to 64) population in 2011 (Census)

Area	16 to 64 Population (2011 Census)	Day to day activities limited (%)	Day to day activities not limited (%)
Durham City MC		10.9	89.1
	Count	(3,815)	(31,264)
County Durham	332,913	17.8	82.2
North East	1,684,964	16.2	83.8
England & Wales	36,273,707	13.0	87.0

Source: ONS 2011 Census (NOMIS extract)

General Health - 2011 Census

General Health in the resident population

83.3% of the resident population (40,028 people) reported they were in 'good health' in the Durham City MC in the 2011 Census. This is higher than the 75.8% recorded across County Durham.

- 12% of the resident population (5,785 people) reported they were in 'fair health' in the Durham City MC. (County Durham = 16.1%).
- 4.7% of the resident population (2,256 people) reported they were in 'poor health' in the Durham City MC. (County Durham = 8.2%).

Table 2: General Health - percentage of the resident population in 2011 (Census)

Area	Total Population (2011 Census)	% in 'Good' Health	% in 'Fair' Health	% in 'Poor' Health
Durham City MC		83.3	12.0	4.7
	Count	(40,028)	(5,785)	(2,256)
County Durham	513,242	75.8	16.1	8.2
North East	2,596,886	77.3	15.2	7.4
England & Wales	56,075,912	81.2	13.2	5.6

Source: ONS 2011 Census (NOMIS extract)

Durham City MC

Healthier

Provision of Unpaid Care - 2011 Census

Provision of Unpaid Care in the resident population

9.6% of the resident population (4,613 people) were providing some level of unpaid care in the Durham City MC (from the 2011 Census). This is lower than the 11.7% recorded across County Durham.

Table 3a: Unpaid Care Provision - percentage of the resident population in 2011 (Census)

Area		Level of provision (hours per week) - %				
		None	Provides care	1 to 19 hours	20 to 49 hours	50 hours or more
Durham City MC		90.4	9.6	6.6	1.0	2.0
	Count	43,456	4,613	3,163	500	950
County Durham		88.3	11.7	6.7	1.7	3.3
	Count	453,187	60,055	34,336	8,826	16,893
North East		89.0	11.0	6.4	1.6	3.0
	Count	2,310,535	286,351	165,828	41,778	78,745
England & Wales		89.7	10.3	6.5	1.4	2.4
	Count (000s)	50,275.7	5,800.2	3,665.1	775.2	1,360.0

Source: ONS 2011 Census (NOMIS extract)

Provision of Unpaid Care by young people (aged 15 and under)

0.8% of the resident population (44 people) were providing some level of unpaid care in the Durham City MC (from the 2011 Census). This is lower than the 1.2% recorded across County Durham.

Table 3b: Unpaid Care Provision by young people - percentage of the 0-15 population in 2011 (Census)

Area		Level of provision (hours per week) - %				
		None	Provides care	1 to 19 hours	20 to 49 hours	50 hours or more
Durham City MC		99.2	0.8	0.7	0.1	0.1
	Count	5,525	44	37	4	3
County Durham		98.8	1.2	0.9	0.1	0.1
	Count	86,930	1,054	835	119	100
North East		98.9	1.1	0.9	0.1	0.1
	Count	457,283	5,154	4,055	565	534
England & Wales		98.9	1.1	0.9	0.1	0.1
	Count (000s)	10,460.2	119.0	96.1	12.0	10.9

Source: ONS 2011 Census (NOMIS extract)

Durham City MC

Healthier

Disability Living Allowance (DLA) - August 2013 to May 2016

Disability Living Allowance Claimants

Note: Disability Living Allowance (DLA) is a tax-free benefit for disabled children and adults to help with extra costs they may have because they are disabled. It is not based on their disability but the needs arising from it. Data given here is for all age groups.

From April 2013 the government started a pilot in selected areas of the north-west and north-east to replace DLA with the new Personal Independence Payments (PIPs) for people aged 16 to 64 with full roll-out planned across great Britain from October 2015.

Further details on PIPs are given below.

^{¶11} In May 2016 3.1% (1,575 people) in the Durham City MC were claiming disability living allowance, compared to 6.7% in the county, 6.1% in the region and 4.4% nationally.

^{¶11} This is a fall of 14.4% in the number of claimants since August 2013 compared to falls of 15% in the county, 13% in the region and of 14.5% nationally.

Table 4: Change in DLA Claimants since August 2013

Area	Total Population ¹	August 2013 (base year)	DLA Claimants Rate ² (count)		
			May 2014	May 2015	May 2016
Durham City MC		3.8	3.7	3.5	3.1
Count	50,093	(1,840)	(1,795)	(1,750)	(1,575)
County Durham	517,773	7.9	7.7	7.4	6.7
North East	2,618,710	7.0	6.9	6.6	6.1
England & Wales	57,408,654	5.3	5.1	4.9	4.4

Source: Department for Works and Pensions; NOMIS

1 Latest ONS Population Estimates. Figures vary year on year.

2 DLA Claimant Count, expressed as a % of the resident population.

3 Average of rate between August 2013 and May 2016.

4 % change in the claimants between August 2013 and May 2016.

Durham City MC

Healthier

Disability Living Allowance (DLA) - August 2013 to May 2016 - continued

Disability Living Allowance Claimants

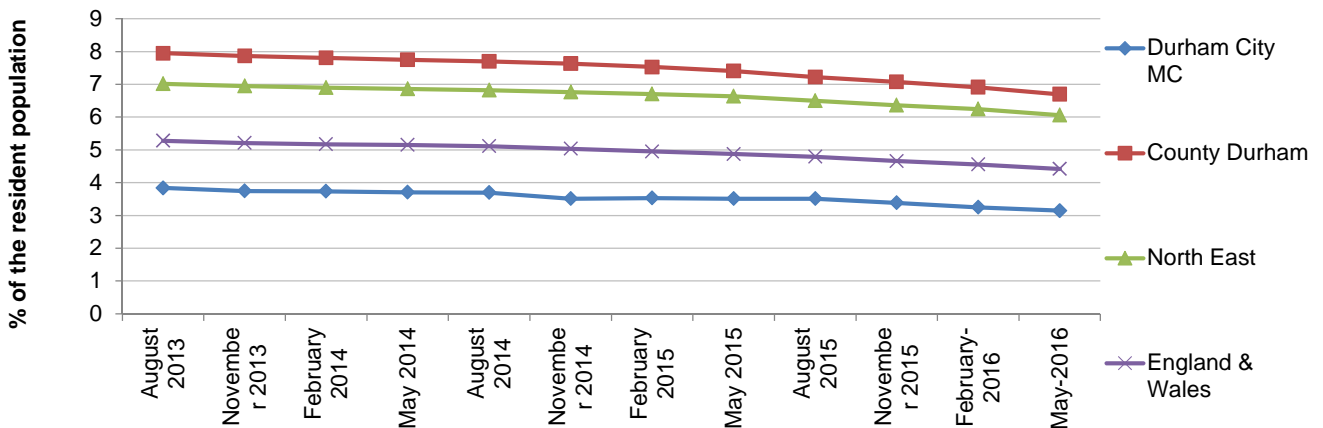
Table 4 (continued): Change in DLA Claimants since August 2013

Area		3 Year Average of Rate ³	% Change ⁴ in claimants
Durham City MC		3.5	
	Count		
County Durham		7.5	-14.4
North East		6.7	-15.0
England & Wales		4.9	-14.5

Source: Department for Works and Pensions; NOMIS

- 1 Latest ONS Population Estimates. Figures vary year on year.
- 2 DLA Claimant Count, expressed as a % of the resident population.
- 3 Average of rate between August 2013 and May 2016.
- 4 % change in the claimants between August 2013 and May 2016.

Figure 1: Change in DLA claimants since August 2013



Durham City MC

Healthier

Personal Independence Payments (PIPs) - April 2013 to February 2016

Personal Independence Payment Claimants aged 16 to 64

Note: Personal Independence Payment (abbreviated PIP) is a welfare benefit in the United Kingdom which is available to help with costs caused by a health condition or disability. It is non-means-tested, non-contributory, and can be paid whether the recipient is employed or not. PIP is based upon the effects of a condition on a person rather than the condition itself.

PIP was introduced in 2013 by the Welfare Reform Act 2012 and replaces the Disability Living Allowance (DLA) from 8 April 2013 for people aged 16 to 64 and is being phased in over the following few years. PIP is to replace Disability Living Allowance gradually, with initial pilots in selected areas of north-west and north-east England which began in April 2013. A full roll-out across Great Britain was planned for October 2015 but this roll out has been delayed, and ministers announced that the roll out would happen 'more gradually' than originally planned.

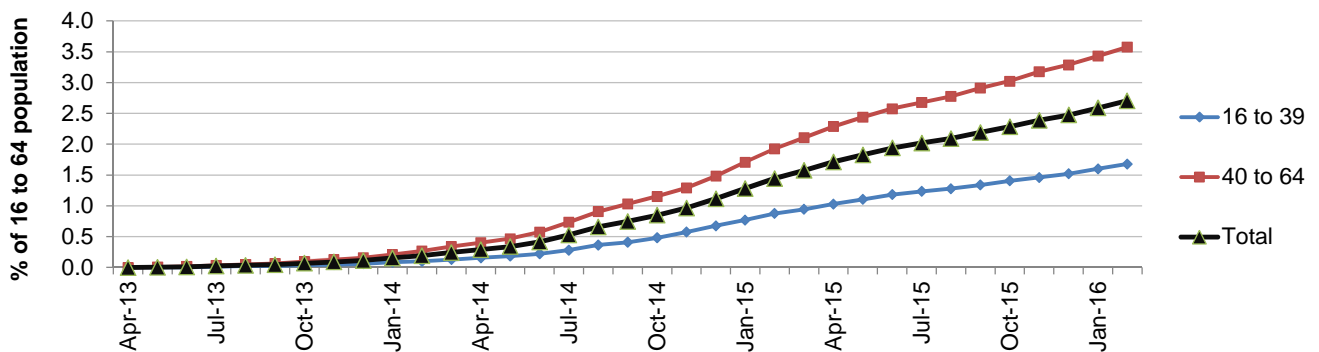
Data is currently only available at the local authority area level and above.

Main points:

Since its introduction in April 2013 the number of working age people claiming PIPs in $\bar{N}11$ County Durham has increased to 8,863 representing 2.7% of the 16 to 64 population, (February 2016).

$\bar{N}11$ Within this age group 60.9% of claimants (6,335 people) were aged 40 to 64.

Figure 2: Change in PIP claimants since April 2013 and February 2016



Durham City MC

Healthier

Premature Mortality (only available for the geographies below)

Definition: Deaths occurring before the age of 75. It is measured, for this indicator, by using the European Age-Standardised mortality rate for people aged under 75. The European Age-Standardised mortality rate is a weighted sum of age-specific mortality rates and is used here to indicate the overall mortality rate. It follows a standard methodology, which was updated in 2013, allowing for comparisons between countries and over time.

Premature Mortality - please select cause:

All Causes

Table 5: Premature All-Cause mortality Directly Age Standardised Rates (DASRs) per 100,000, with 95% confidence intervals 2011-13 pooled (under 75s)

Area		DASR ¹	Confidence Interval	
			Lower Limit	Upper Limit
County Durham		397.1	386.6	407.5
Clinical Commissioning Group/Locality	North Durham CCG	380.1	365.1	395.2
	Chester-le-Street CCL	341.4	312.4	370.4
	Derwentside CCL	417.2	391.8	442.6
	Durham CCL	367.6	343.3	391.9
	DDES CCG	411.8	397.3	426.2
	Durham Dales CCL	368.3	345.1	391.6
	East Durham CCL	455.7	429.2	482.2
	Sedgefield CCL	413.2	387.8	438.6
Partnership Area	Central Durham PG	366.4	343.8	389.0
	East Durham PG	455.7	429.2	482.2
	North Durham PG	391.0	370.8	411.2
	South Durham PG	416.3	396.3	436.3
	The Dales PG	295.3	262.6	328.0

Source: Primary Care Mortality Database - Based on MSOA level data

Note: Values of 0.0 indicate that figures for this indicator at this geography are not available.

1 DASRs are calculated by dividing the number of deaths by the actual local population in a particular age group multiplied by the standard population for that particular age group and summing across the relevant age groups. The rate is usually expressed per 100,000.

Table 5 continued on the next page

Durham City MC

Healthier

Premature Mortality (only available for the geographies below) - continued

Table 5 (continued): Premature All-Cause mortality Directly Age Standardised Rates (DASRs) per 100,000, with 95% confidence intervals 2011-13 pooled (under 75s)

Area		DASR ¹	Confidence Interval	
			Lower Limit	Upper Limit
County Durham		397.1	386.6	407.5
Area Action Partnerships	3 Towns Partnership AAP	436.1	386.2	485.9
	4 Together Partnership AAP	455.2	396.6	513.8
	Bishop Auckland and Shildon AAP	445.7	406.8	484.5
	Chester-le-Street & District AAP	341.4	312.4	370.4
	Derwent Valley AAP	423.3	386.5	460.2
	Durham AAP	339.6	310.6	368.5
	East Durham AAP	397.7	372.8	422.7
	East Durham Rural AAP	593.2	536.5	649.9
	Great Aycliffe & Middridge AAP	410.7	363.8	457.6
	Mid Durham AAP	385.4	345.4	425.4
	Spennymoor AAP	356.5	308.1	404.8
	Stanley AAP	444.4	400.1	488.7
	Teesdale AAP	291.6	254.0	329.2
Weardale AAP	306.6	241.8	371.3	

Source: Primary Care Mortality Database - Based on MSOA level data

Note: Values of 0.0 indicate that figures for this indicator at this geography are not available.

1. DASRs are calculated by dividing the number of deaths by the actual local population in a particular age group multiplied by the standard population for that particular age group and summing across the relevant age groups. The rate is usually expressed per 100,000.

Durham City MC

Healthier

Premature Mortality (only available for the geographies below)

Figure 3: Area Action Partnerships - Premature All-Cause mortality Directly Age Standardised Rates (DASRs) per 100,000, with 95% confidence intervals 2011-13 pooled (under 75s)

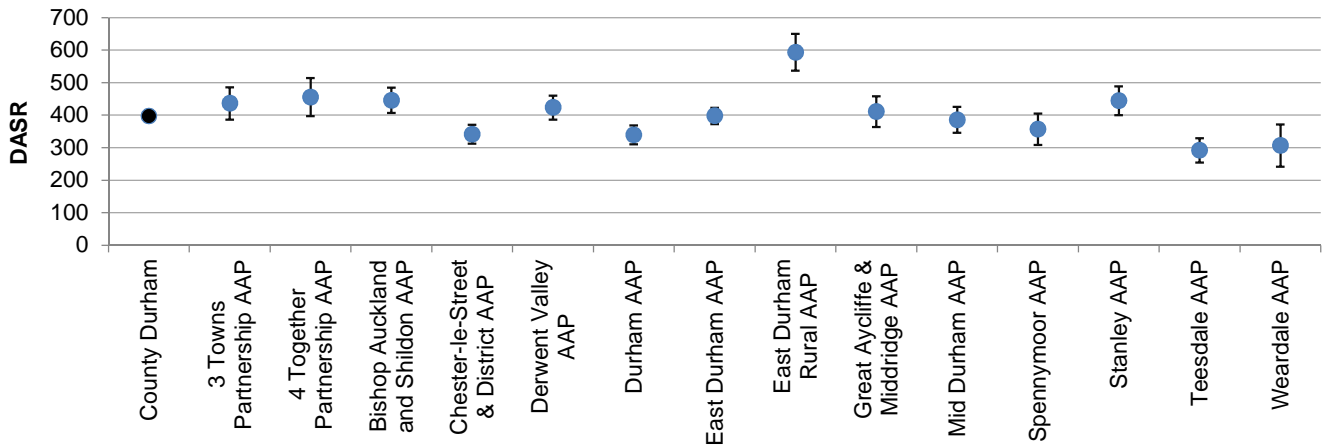
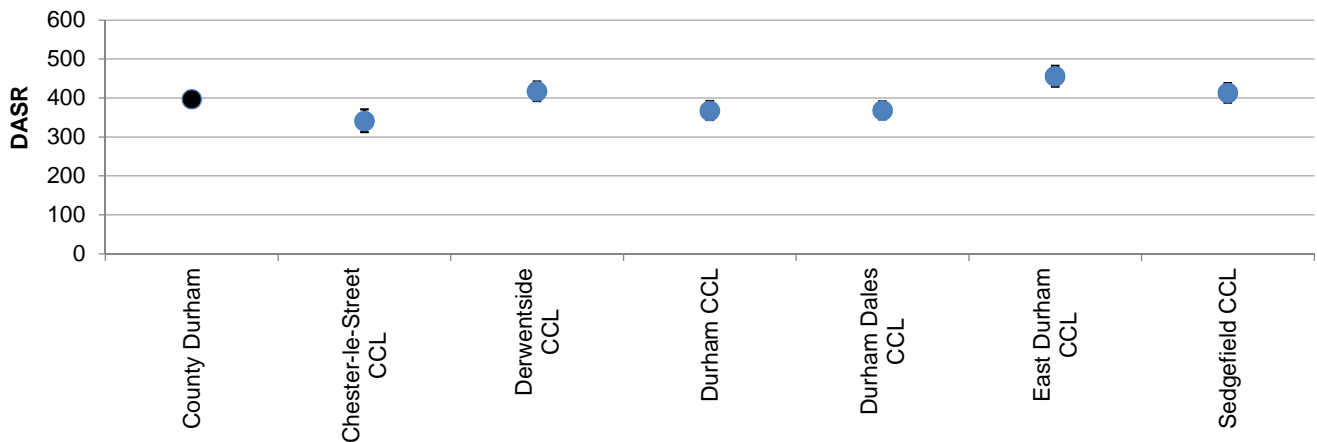


Figure 4: Clinical Commissioning Localities - Premature All-Cause mortality Directly Age Standardised Rates (DASRs) per 100,000, with 95% confidence intervals 2011-13 pooled (under 75s)

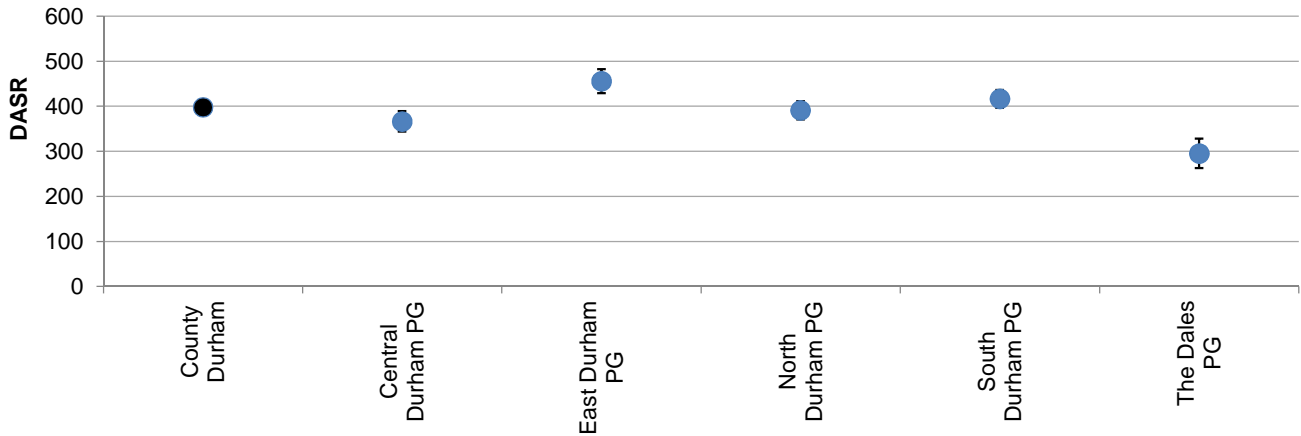


Durham City MC

Healthier

Premature Mortality (only available for the geographies below) - continued

Figure 5: Partnership Areas - Premature All-Cause mortality Directly Age Standardised Rates (DASRs) per 100,000, with 95% confidence intervals 2011-13 pooled (under 75s)



Sub-county Statistical Profile Summary Sheets



Durham City MC

Safer

Contents	Page
Recorded Crime and ASB Incidents (Durham Constabulary; ONS PFA tables)	59
Road Traffic Accidents (Durham County Council)	62

Recorded Crime and Anti Social Behaviour Incidents (estimates) - 2012/13 and 2013/14

Note

The figures reported here for the area and county are estimates from recorded mapped (geo-coded) crimes/ASB incidents in County Durham. This does not represent all reported incidents in the county as a small percentage do not contain sufficient geographical information for them to be assigned to the ONS Census Lower Super Output Area (LSOA) geography from which these estimates are then calculated.

Additionally figures for County Durham refer to the local authority area and not the County Durham Police Authority area which includes Darlington. Therefore rates given in this document should not be compared with nationally published police authority, regional and national datasets. Regional and national figures are supplied for information purposes only and are for all recorded offences (excluding British Transport Police data).

Recorded (mapped) crimes in 2013/14

¶11 The estimated overall rate of recorded offences (geo-coded incidents only and excluding fraud) in the Durham City MC was 50.3 crimes per 1,000 people in 2013/14, which was higher than the 44.6 recorded offences in the area in 2012/13. (County Durham rates were 44.1 in 2013/14 and 41 in 2012/13 respectively).

¶11 Victim based offences increased to 43.4 (offences/1000 population) in 2013/14 from 38.1 in 2012/13. (County Durham rates were 39.5 in 2013/14 and 36.4 in 2012/13 respectively).

¶11 Theft based offences increased to 26.6 (offences/1000 population) in 2013/14 from 24.9 in 2012/13. (County Durham rates were 20.8 in 2013/14 and 19.7 in 2012/13 respectively).

Sub-county Statistical Profile
Summary Sheets



Durham City MC

Safer

Recorded (mapped) crimes in 2013/14 - continued

Table 1: Recorded Crime - rate per 1000 population

Area ¹	Recorded Crime (ex Fraud)			
	2012/13	2013/14		
Durham City MC	44.6	50.3		
County Durham	41.0	44.1		
For information purposes only:				
North East	51.9	54.5		
England & Wales (000s)	61.4	61.1		
Area ¹	Victim Based ²		Theft ³	
	2012/13	2013/14	2012/13	2013/14
Durham City MC	38.1	43.4	24.9	26.6
County Durham	36.4	39.5	19.7	20.8
For information purposes only:				
North East	45.6	48.2	25.9	27.6
England & Wales (000s)	48.8	54.3	32.4	32.2

Source: Durham Constabulary; ONS Crime in England & Wales, PFA tables

- 1 Figures for the area and county are estimated from geo-coded offences only. NE and E&W figures are for all offences but do not include offences recorded by the British transport Police.
- 2 Victim based includes the offences of 'Violence against the person', 'Theft' and 'Criminal Damage and Arson'.
- 3 Theft based includes the offences of 'Burglary', 'Vehicles offences', 'Theft from a person', 'Bicycle theft', 'Shoplifting' and 'Other theft offences'.

Sub-county Statistical Profile Summary Sheets



Durham City MC

Safer

Anti Social Behaviour (ASB) Incidents (mapped) crimes in 2013/14

The estimated overall rate of recorded ASB offences (geo-coded incidents only) in the $\bar{N}11$ Durham City MC was 33.2 incidents per 1,000 people in 2013/14, which was lower than the 34.9 recorded offences in the area in 2012/13.

- Those ASB incidents recorded as 'Environmental' increased to 4.3 incidents per 1000 population in 2013/14 from 3.6 in 2012/13.
- Those ASB incidents recorded as 'Nuisance' fell to 22.3 incidents per 1000 population in 2013/14 from 23.3 in 2012/13.
- Those ASB incidents recorded as 'Personal' fell to 6.6 incidents per 1000 population in 2013/14 from 7.9 in 2012/13.

Table 2: ASB - rate per 1000 population

Area ¹	Total		Environmental	
	2012/13	2013/14	2012/13	2013/14
Durham City MC	34.9	33.2	3.6	4.3
County Durham	49.5	47.2	5.6	5.7
For information purposes only:				
North East	60.7	57.1	2.3	2.6
England & Wales (000s)	40.1	37.2	2.5	2.3

Area ¹	Nuisance		Personal	
	2012/13	2013/14	2012/13	2013/14
Durham City MC	23.3	22.3	7.9	6.6
County Durham	30.5	28.8	13.4	12.7
For information purposes only:				
North East	48.3	46.3	9.2	8.1
England & Wales (000s)	26.2	24.6	11.4	10.3

Source: Durham Constabulary; ONS Crime in England & Wales, PFA tables

¹ Figures for the area and county are estimated from geo-coded ASB offences only. NE and E&W figures are for all ASB offences.

Sub-county Statistical Profile
Summary Sheets



Durham City MC

Safer

Road Traffic Accidents between 2008 and 2013

Note: These figures represent the total number of Road traffic Accidents (RTAs) recorded in County Durham between 2008 and 2013. Incidents have been aggregated up to the LSOA geography and estimates then calculated for the various geographical areas in the county (see introductory notes on page 1).

The road mileages used in this dataset were estimated from the Ordinance Survey OSCAR road coverage which covers all types of roads in the county from motorway to unclassified.

Main points:

There were an estimated 744 RTAs in the Durham City MC between 2008 and 2013, equivalent to 5.2 RTAs per 1000 road miles in the area and resulting in 1,055 injuries over this five year period.

The majority were classed as 'slight' (97.7%) and represented 91.6% of all injuries over the five year period.

Table 3: Road Traffic Accidents: 2008 to 2014

Area	Count	Total RTAs Rate (per 1000 road miles) ¹	Injuries	RTAs: 'Slight'	
				% of total RTAs	% of total injuries
Durham City MC	744	5.2	1,055	97.7	91.6
County Durham	7,225	2.3	10,234	95.2	88.5

Source: Durham County Council; OS OSCAR road coverage

¹ Estimated from the OS OSCAR road coverage network.

Sub-county Statistical Profile
Summary Sheets



Durham City MC

Greener

Contents	Page
Anti Social Behaviour (ASB): Environmental Incidents (Durham Constabulary; ONS PFA tables)	63
Average Domestic Energy Consumption (Dept. ECC)	64
Car Ownership (2011 Census)	65
Estimated Annual Vehicle Miles (DfT)	66

Recorded ASB Environmental Incidents (estimates) - 2012/13 and 2013/14

Note The figures reported here for the area and county are estimates from recorded mapped (geo-coded) ASB Environmental incidents in County Durham (they are also displayed in the 'Safer' sheet as a part of total ASB). This does not represent all reported environmental incidents in the county as a small percentage do not contain sufficient geographical information for them to be assigned to the ONS Census Lower Super Output Area (LSOA) geography from which these estimates are then calculated.

Additionally figures for County Durham refer to the local authority area and not the County Durham Police Authority area which includes Darlington. Therefore rates given in this document should not be compared with nationally published police authority, regional and national datasets. Regional and national figures are supplied for information purposes only and are for all recorded offences (excluding British Transport Police data).

ASB Environmental Incidents (mapped) crimes in 2013/14

⌈11 Those ASB incidents recorded as 'Environmental' increased to 4.3 incidents per 1000 population in 2013/14 from 3.6 in 2012/13.

Table 1: Environmental ASB - rate per 1000 population

Area ¹	Environmental	
	2012/13	2013/14
Durham City MC	3.6	4.3
County Durham	5.6	5.7
For information purposes only:		
North East	2.3	2.6
England & Wales (000s)	2.5	2.3

Source: Durham Constabulary; ONS Crime in England & Wales, PFA tables

¹ Figures for the area and county are estimated from geo-coded ASB offences only. NE and E&W figures are for all ASB offences.

Sub-county Statistical Profile
Summary Sheets



Durham City MC

Greener

Average Domestic Energy Consumption - change between 2008 and 2014

Mega-watt hours (mWh) per annum

On average, each dwelling in the Durham City MC consumed 17.5 mWh of domestic energy (gas and electricity) in 2014, 18% lower than 2008 consumption. This is higher than the average consumption across the county of 15.9 mWh per annum in 2014. (North East 15.7 mWh, England & Wales 15.1 mWh per annum).

Table 2: Average domestic energy consumption per dwelling in 2014

Area	Average domestic energy consumption in 2014			
	Total - Gas and Electricity (mWh)	% change since 2008		
Durham City MC	17.5	-18.0		
County Durham	15.9	-19.4		
North East	15.7	-19.8		
England & Wales (000s)	15.1	-19.2		
Area	Total - Electricity (mWh)	% change since 2008	Total - Gas (mWh)	% change since 2008
Durham City MC	3.4	-6.7	14.1	-20.3
County Durham	3.3	-5.4	12.5	-22.5
North East	3.4	-5.9	12.3	-23.0
England & Wales (000s)	3.9	-7.1	11.2	-22.8

Source: Department of Energy & Climate Change

Sub-county Statistical Profile
Summary Sheets



Durham City MC

Greener

Car Ownership

Percentage of households with access to 1 or more cars - 2011 Census

²⁰¹¹ The number of households with access to at least 1 car increased by 5.3% between 2001 and 2011 to 12,860 households in the Durham City MC, compared to increases across County Durham, North East and England & Wales of 14.5%, 13.3% and 9.6% respectively.

²⁰¹¹ The total number of cars in the Durham City MC increased by 0.08% to 19,205 cars in 2011.

Table 3: Households with access to 1 or more cars - percentage of occupied households - 2011 (Census)

Area	Households with cars	Access to 1 car	Access to 2 cars	Access to 3 cars	Access to 4 or more cars
Durham City MC	74.2	45.0	23.4	4.5	1.2
Count (2011)	(12,860)	(7,804)	(4,062)	(779)	(215)
County Durham	72.8	42.9	23.6	4.8	1.5
North East	68.5	42.2	21.1	4.1	1.2
England & Wales (000s)	74.4	42.2	24.7	5.5	1.9

Area	Households with no cars	Total number of cars in the area
Durham City MC	25.8	
Count (2011)	(4,476)	19,205
County Durham	27.2	248,586
North East	31.5	1,150,133
England & Wales (000s)	25.6	27,294,656

Source: ONS 2011 Census

Sub-county Statistical Profile
Summary Sheets



Durham City MC

Greener

Traffic Counts - estimated annual vehicle miles travelled

Estimated annual miles traveled by vehicles - percentage change between 2008 and 2014

Note These annual mileage figures are estimates calculated from data collected from 128 traffic counts taken across the county on principal 'A' roads including trunk roads and motorway locations during 2014. Miles shown are per thousand vehicle miles. Therefore a mileage of 1,000,000 would be shown as 1,000k.

Main points:

⌘11 Figures for this area are not available as there were no traffic counts in the area.

⌘11 Figures for this area are not available as there were no traffic counts in the area.

⌘11 Figures for this area are not available as there were no traffic counts in the area.

Table 4: Estimated annual vehicle miles - percentage change since 2014

Area	All Traffic		All Cars		All HGVs	
	% change from 2008	Miles Travelled (000's)	% change from 2008	Miles Travelled (000's)	% change from 2008	Miles Travelled (000's)
Durham City MC	n/a	n/a	n/a	n/a	n/a	n/a
County Durham	0.8	1,704,778	0.8	1,320,920	-12.1	112,801

Source: Department for Transport - traffic counts

Link (County Durham): <http://www.dft.gov.uk/traffic-counts/area.php?region=North+East&la=Durham>

t: 03000 268 032
e: researchconsultation@durham.gov.uk:
www.countydurhampartnership.co.uk/article/8461/Intergrated-Needs-Assessment

