

**1. Rainfall**

The Yorkshire Region Has Received 103.0% of LTA for July

**2. Reservoirs (surface water supply reservoirs not including Hull)**

Over the Past Week Our Reservoir Stocks Have Decreased By -2.18% To 67.7%

**3. Rivers**

Some of Our Rivers are Below Critical Level

**4. Demand**

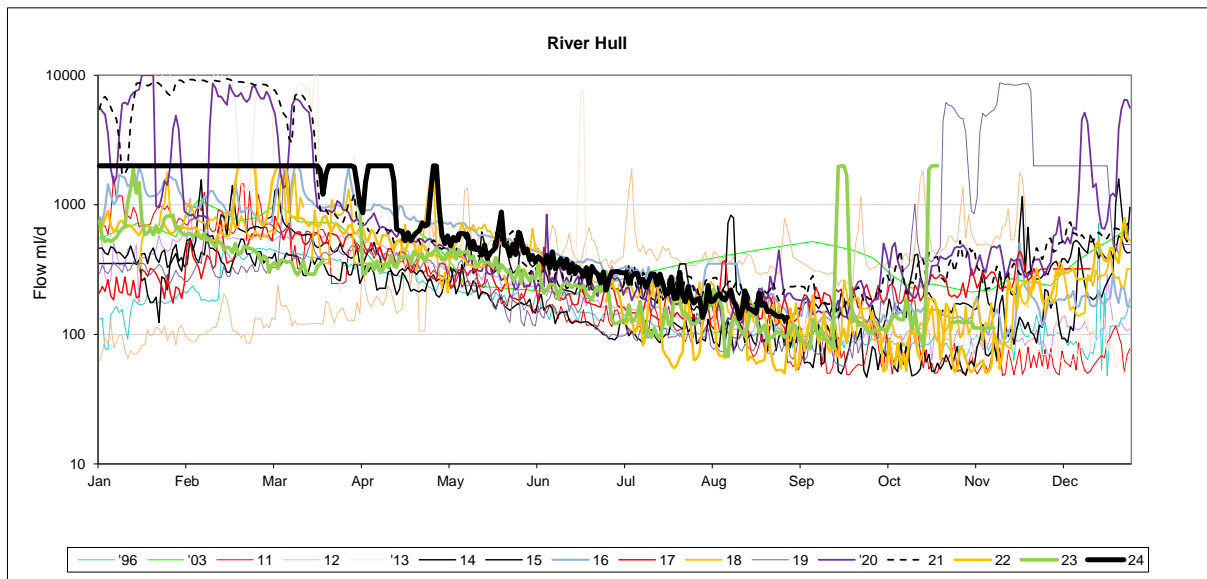
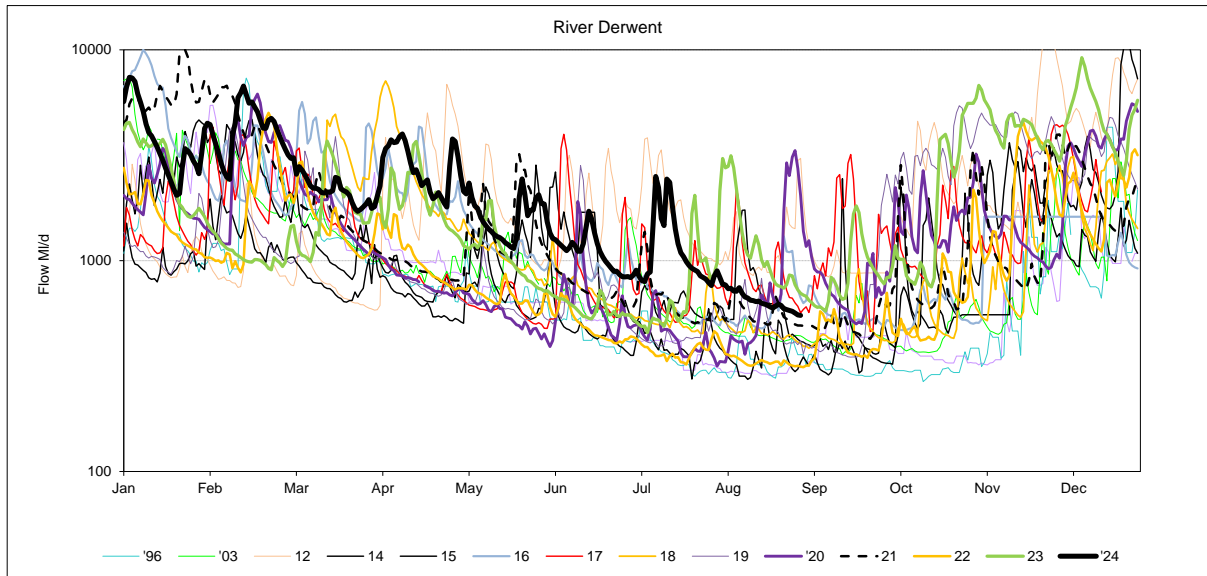
Regional Demand = 1338.8 Ml/d (including York)

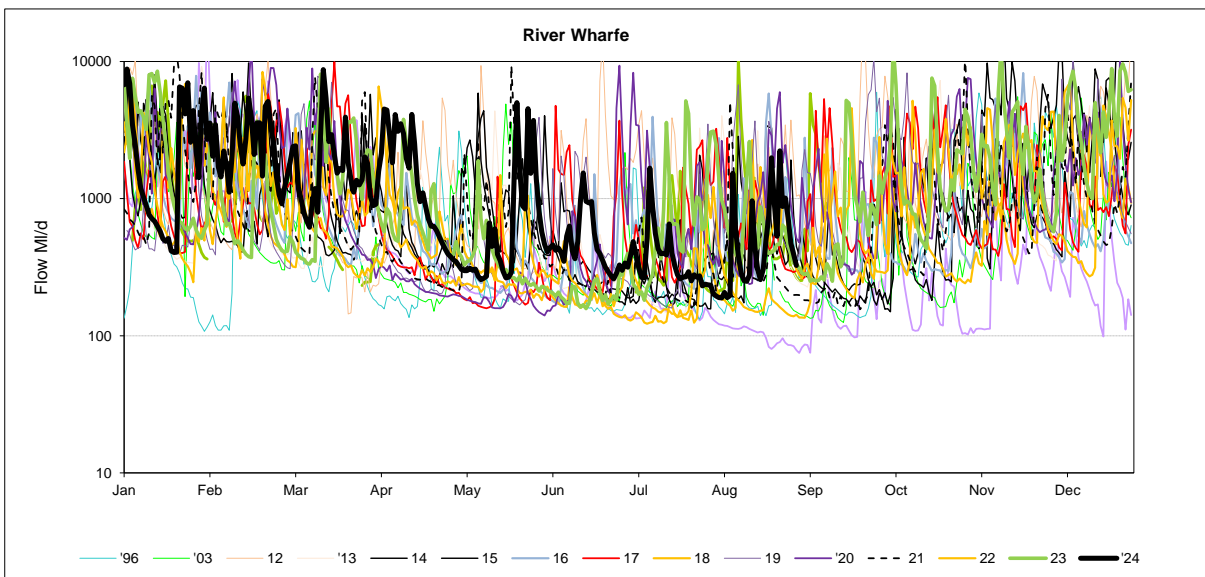
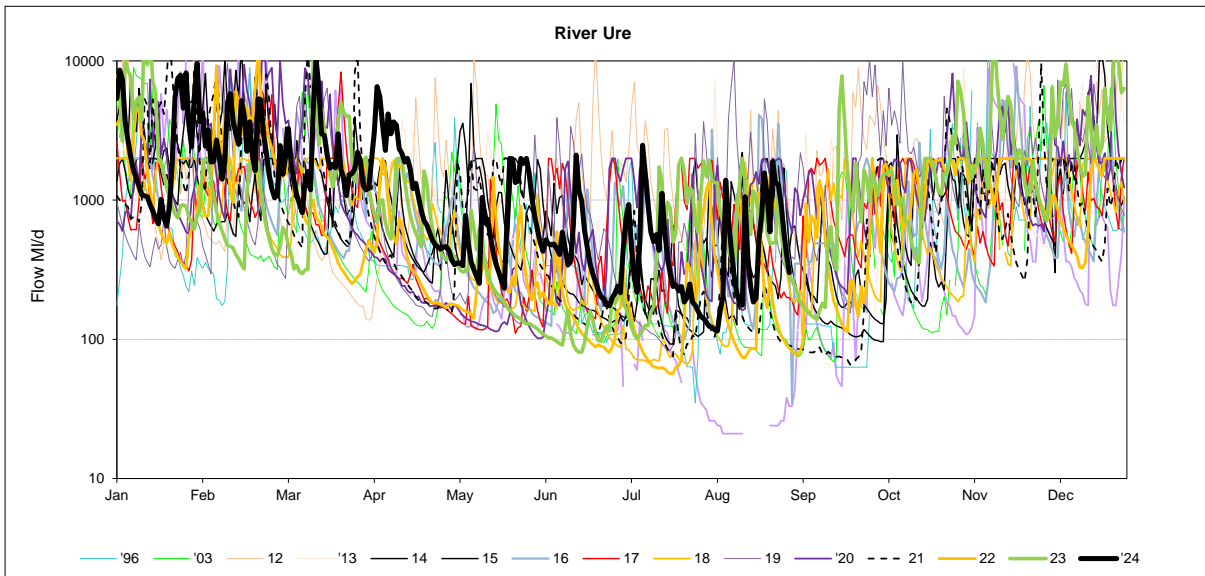
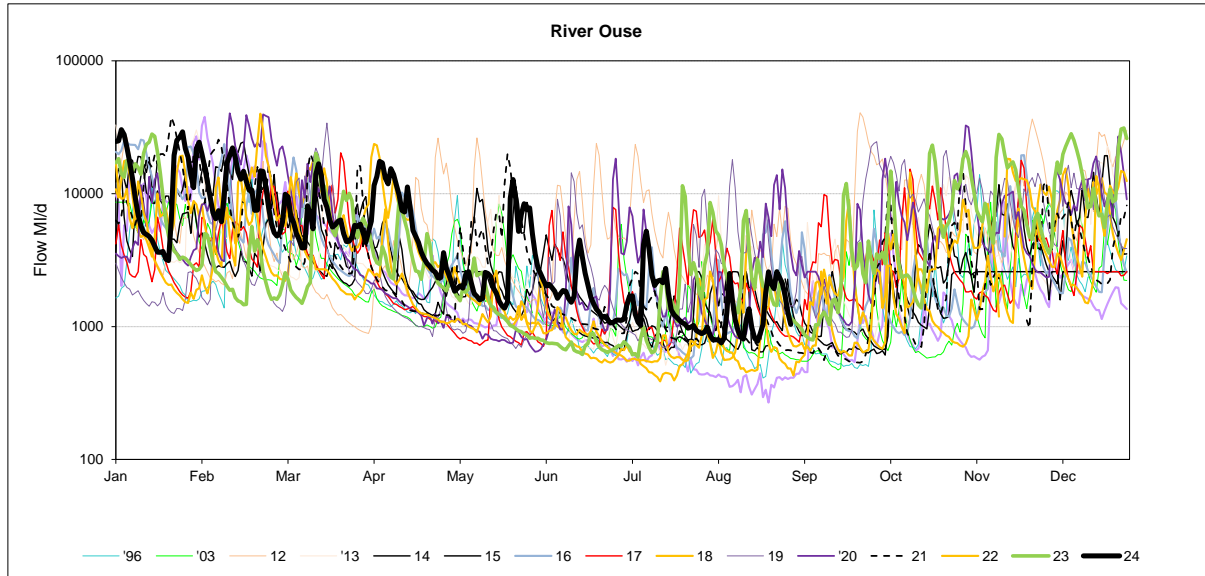
**5. Comments**

RIVER FLOWS

29 July 2024

	Tue 28-Jul	Mon 21-Jul	Mon 14-Jul	Mon 07-Jul	Critical flow bands
Derwent	✓ 832	✓ 1044	✓ 1467	✓ 795	305
Hull (using gauged (residual flows) only from 2011)	✓ 234	ⓘ 207	✓ 258	✓ 248	45 / 159 / 227
Ouse	✓ 1021	✓ 1226	✓ 2037	✓ 1234	400 / 650 / 1000
Ure	ⓘ 185	ⓘ 240	✓ 505	ⓘ 275	50 / 163 / 300
Wharfe	ⓘ 273	ⓘ 259	ⓘ 397	ⓘ 266	252 / 389 / 488 / 580





Yorkshire Region (Met Office)				England/Wales	
Month	mm	LTA	LTA(%)	mm	LTA(%)
January	100	79	127%	96	103%
February	97	69	141%	140	191%
March	79	59	133%	103	160%
April	95	58	165%	92	153%
May	81	55	148%	85	139%
June	48	72	67%	36	52%
July	74	69	108%	80	113%

**SOURCE OF DATA : Hydrological Summary of Gt Britain, Institute of Hydrology**

Yorkshire Water Services Data			
Rainfall Station	Total July	LTA July	LTA % July
Tophill	NDA	48	0%
Cottingham	NDA	49	0%
Bridlington	NDA	51	0%
Roundhill	68.6	62	111%
Fewston	55.0	61	90%
Osmotherley	122.0	61	200%
Scar House	61.5	78	79%
Watersheddles	66.6	91	73%
Gt Walden Edge	83.2	91	91%
Walshaw Dean	63.9	88	73%
Blackmoorfoot	72.2	70	103%
Ramsden	76.2	89	86%
Redmires	94.9	66	144%
Langsett	NDA	59	0%
<b>YORKSHIRE REGION</b>	<b>76.4</b>	<b>74.2</b>	<b>103%</b>
<b>EAST REGION</b>	<b>122.0</b>	<b>61.0</b>	<b>200%</b>
<b>PENNINE (WEST)</b>	<b>76.4</b>	<b>74.2</b>	<b>103%</b>

NDA= No data available/lack of readings, impacts % LTA for the month

SOURCE OF DATA : YWS RAIN GAUGES- weekly, so monthly data may include previous month or miss start of month

# MAJOR SOURCE OUTPUTS

29 July 2024

25/07/2024

	Operational Maxima & Design Yields (Ml/d)	WRAP Targets Week Beginning - 25/07/2024	Daily Average Previous 5 Days Starting - 25/07/2024	WRAP Targets Week Starting - 18/07/2024	Daily Average Week Starting - 18/07/2024
WATER TREATMENT WORKS					
CENTRAL					
ECCUP NO 1 WTW	100	53	53	53	50
ECCUP NO 2 WTW	60	44	36	44	40
HEADINGLEY	95	63	70	63	66
HARLOW HILL	41.5	27	28	27	25
THORNTON STEWARD	22.5	20	21	20	22
EAST					
EAST NESS	17	8	9	8	9
IRTON	23.5	13	14	13	13
RUSWARP	12	7	7	7	8
TOPHILL LOW	68	40	39	40	40
KELDGATE	90	60	76	60	67
NORTH WEST					
CHELLOW	175	148	157	148	150
GRAINCLIFFE	60	38	39	38	38
SLADEN VALLEY	12	8	8	8	9
OLDFIELD	10.1	6	5	6	5
EMBSAY	25	17	19	17	19
SOUTH					
INGBIRCHWORTH	20	20	18	20	15
LANGSETT	56	36	56	36	55
<b>(TOTAL)</b>	<b>75</b>	<b>56</b>	<b>74</b>	<b>56</b>	<b>70</b>
EWDEN	40	35	30	35	25
LOXLEY	40	26	28	26	29
<b>(TOTAL)</b>	<b>80</b>	<b>61</b>	<b>58</b>	<b>61</b>	<b>55</b>
RIVELIN	75	64	61	64	57
SOUTH WEST					
ALBERT	55	51	46	51	42
FIXBY	30	21	16	21	15
KIRKHAMGATE	30	17	11	17	11
<b>(TOTAL)</b>	<b>115</b>	<b>89</b>	<b>72</b>	<b>89</b>	<b>69</b>
BLACKMOORFOOT	23	20	18	20	18
LONGWOOD	32	27	22	27	22
<b>(TOTAL)</b>	<b>55</b>	<b>47</b>	<b>40</b>	<b>47</b>	<b>40</b>
HOLMBRIDGE	29	19	20	19	20
GRID					
ELVINGTON	260	159	178	159	161
LOFTSOME BRIDGE	110	75	35	75	33

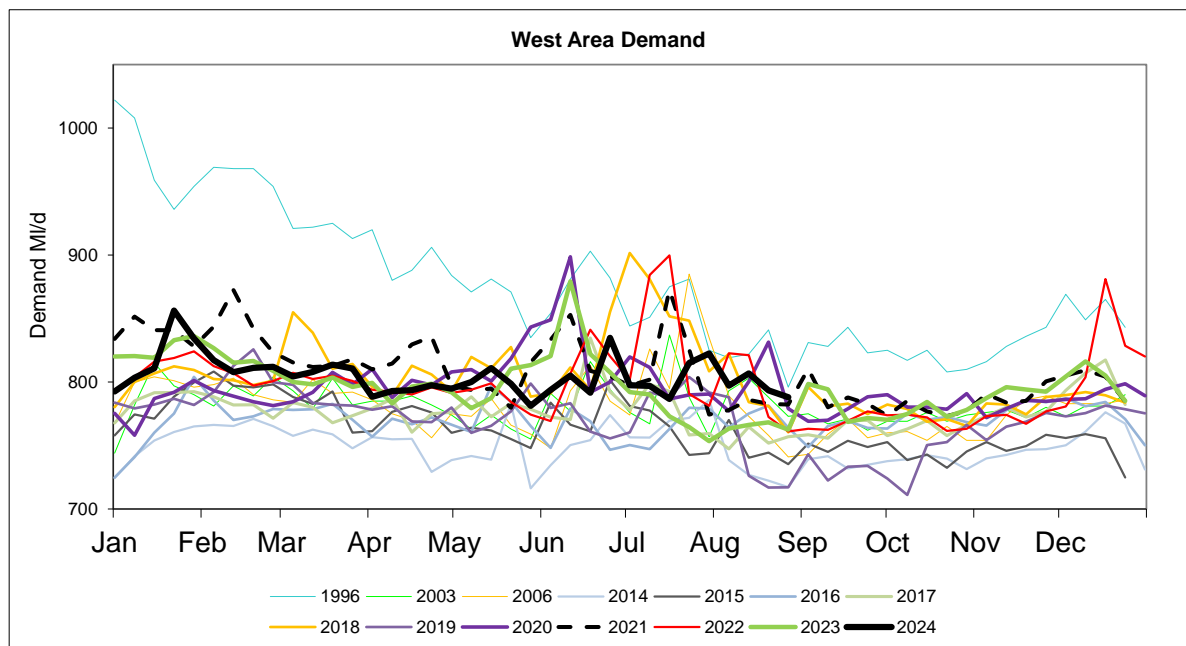
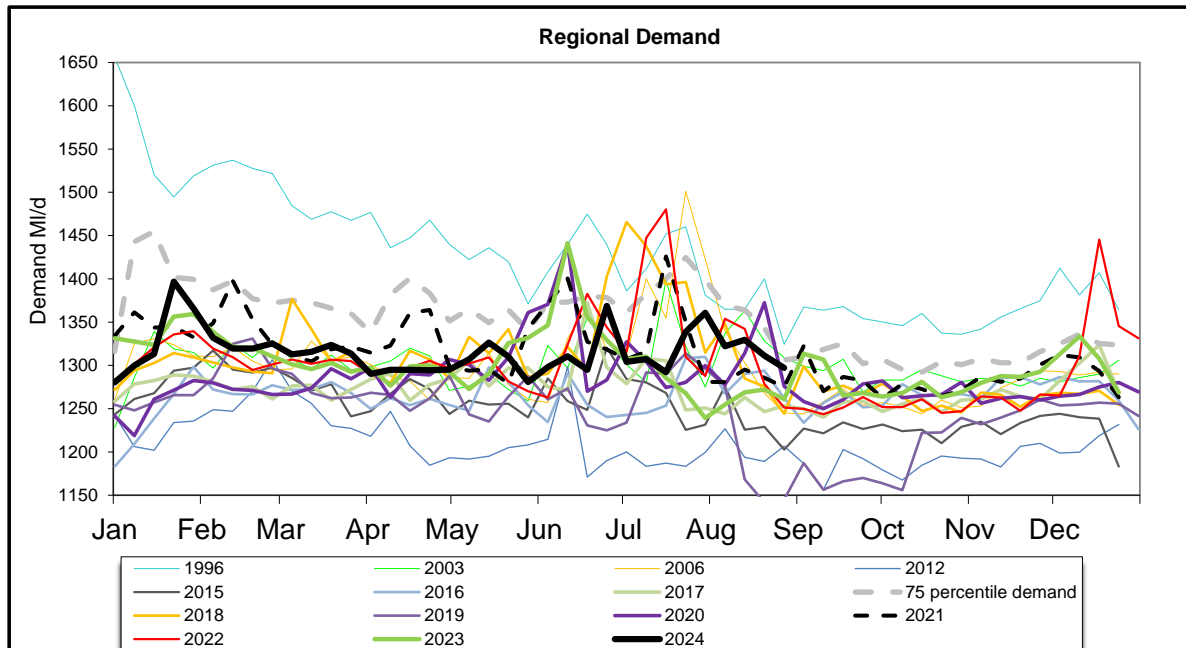
Daily Average Demand MI/d

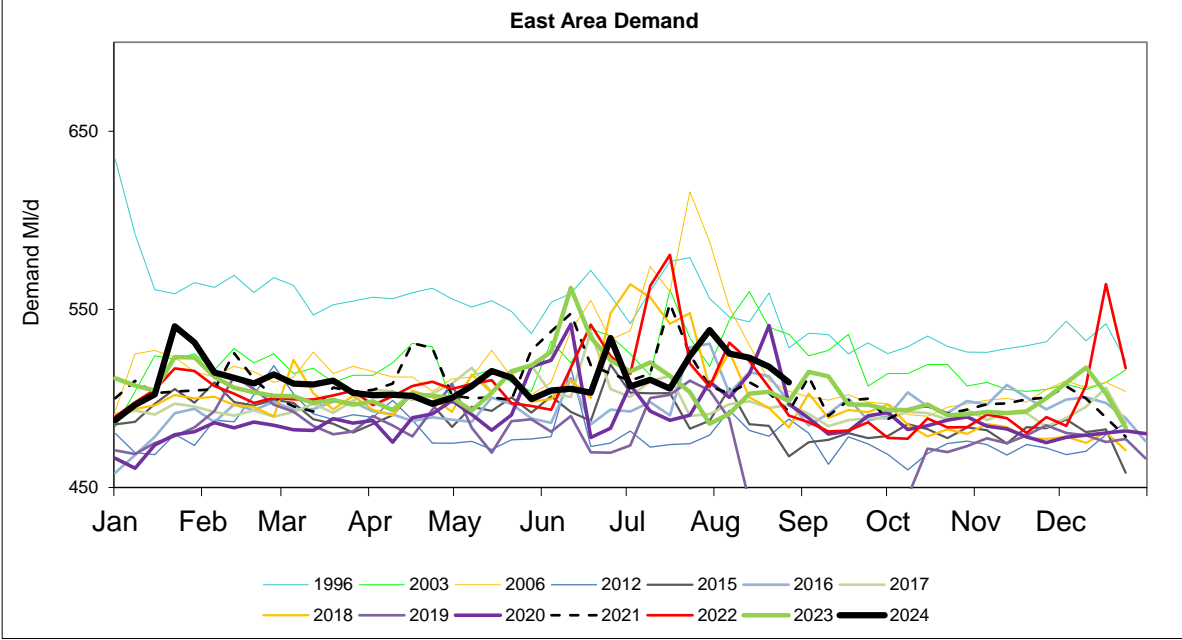
Week Ending Wednesday	L E D S	W A M E + R F I E L D	S E B Y	H A R R O G A T E	H U L L	M A L L T O N	S H E F F / B L Y	D O N C A S T E R	B R A D F O R D	C A L D E R	S K I P T O N	Y O R K A R E A	R E G I O N
26/06/2024	172	79	44	81	174	58	282	89	147	155	38	50	1369
03/07/2024	164	77	41	77	164	56	272	83	141	147	36	46	1304
10/07/2024	169	75	42	76	167	53	271	81	141	150	37	46	1307
17/07/2024	162	75	41	76	167	53	266	80	140	148	37	47	1292
24/07/2024	162	76	43	80	179	57	275	85	144	154	38	45	1339

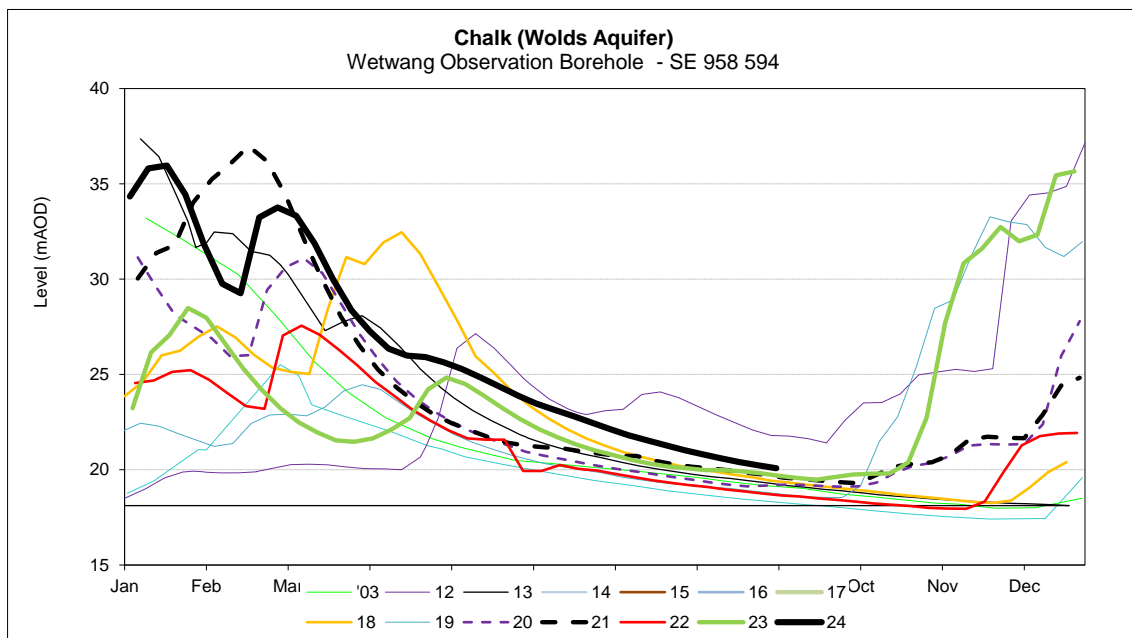
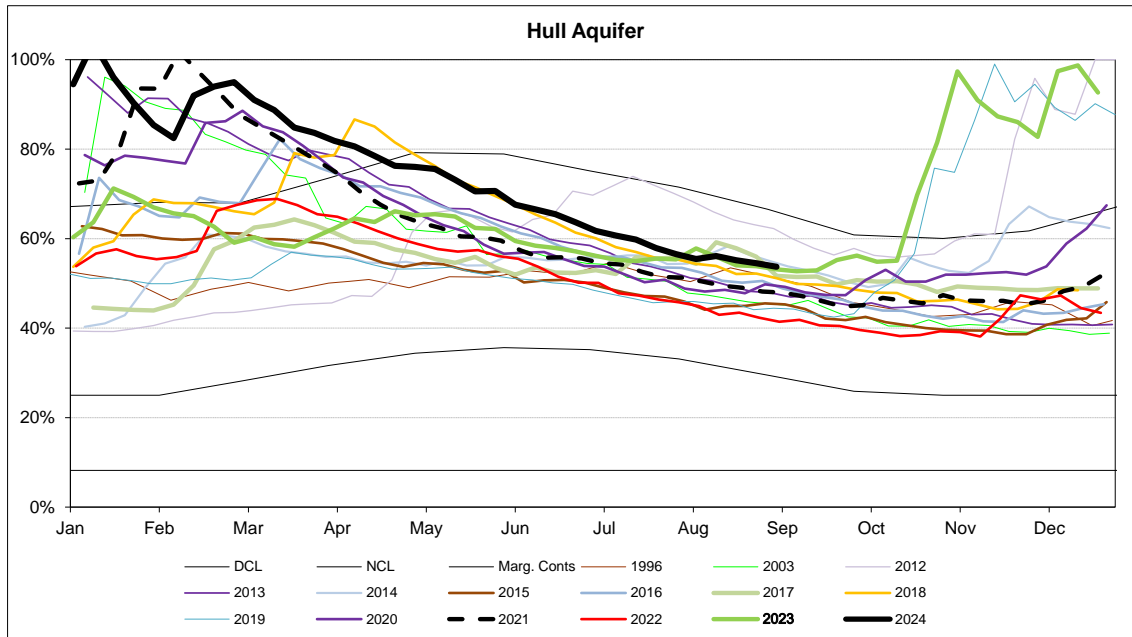
MONTHLY DEMANDS FROM WIS REPORT

Jun-24	166	65	41	74	165	53	266	74	142	148	36	46	1278
Jul-24	161	65	41	74	173	55	279	73	141	148	36	46	1293

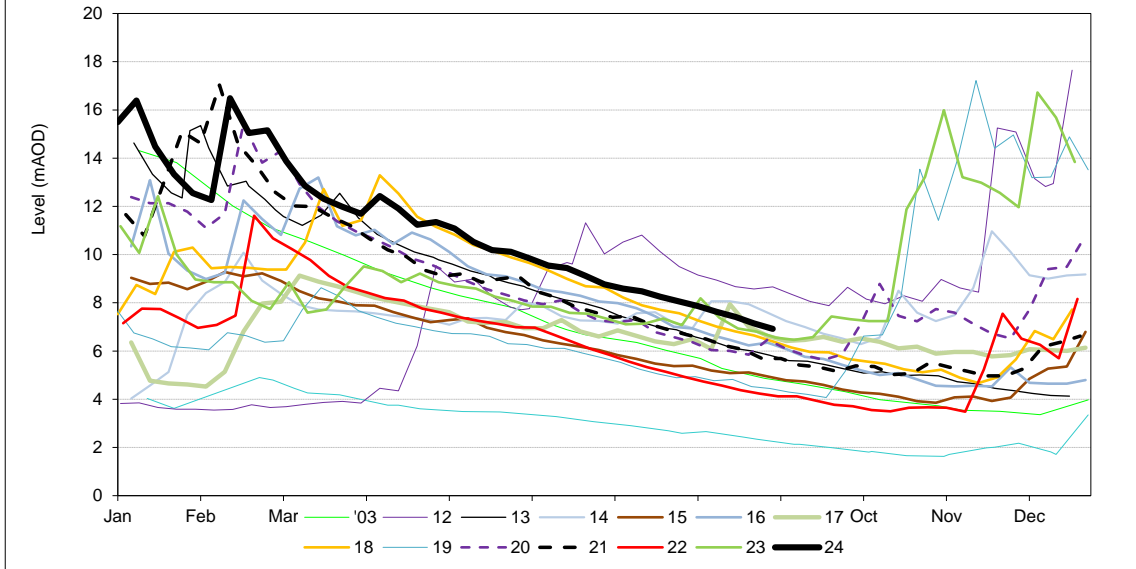
NB Current month demands include some estimates for minor sources and are not exactly comparable with previous months' figures.



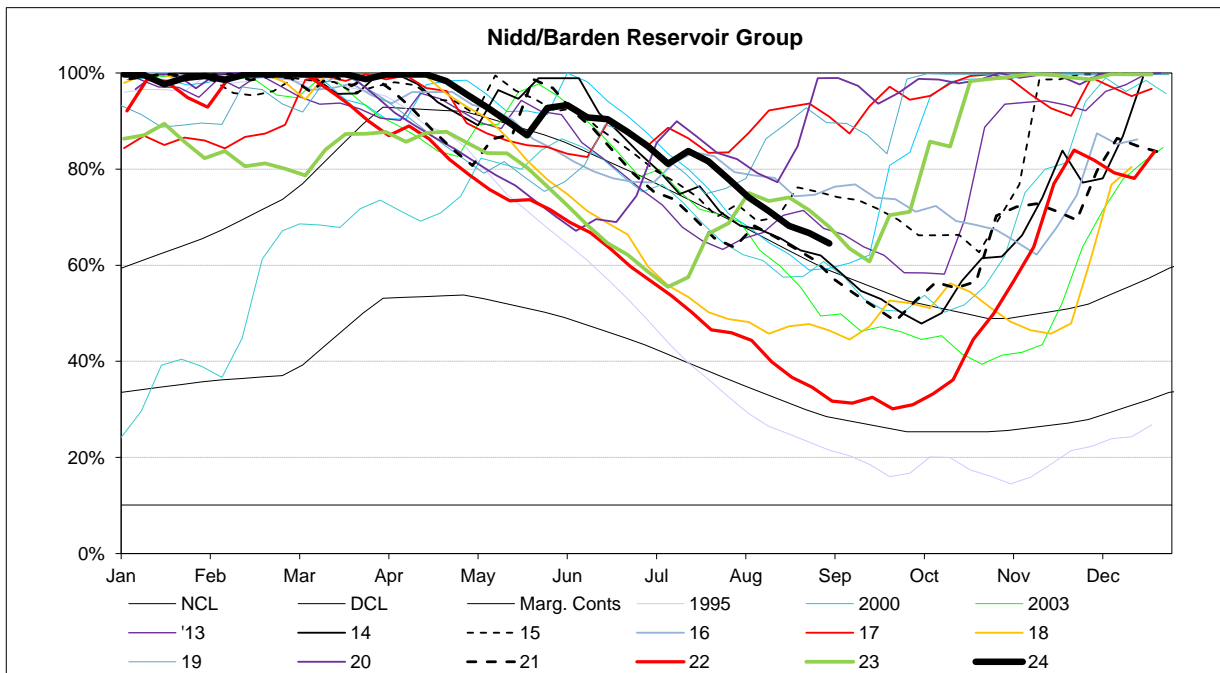
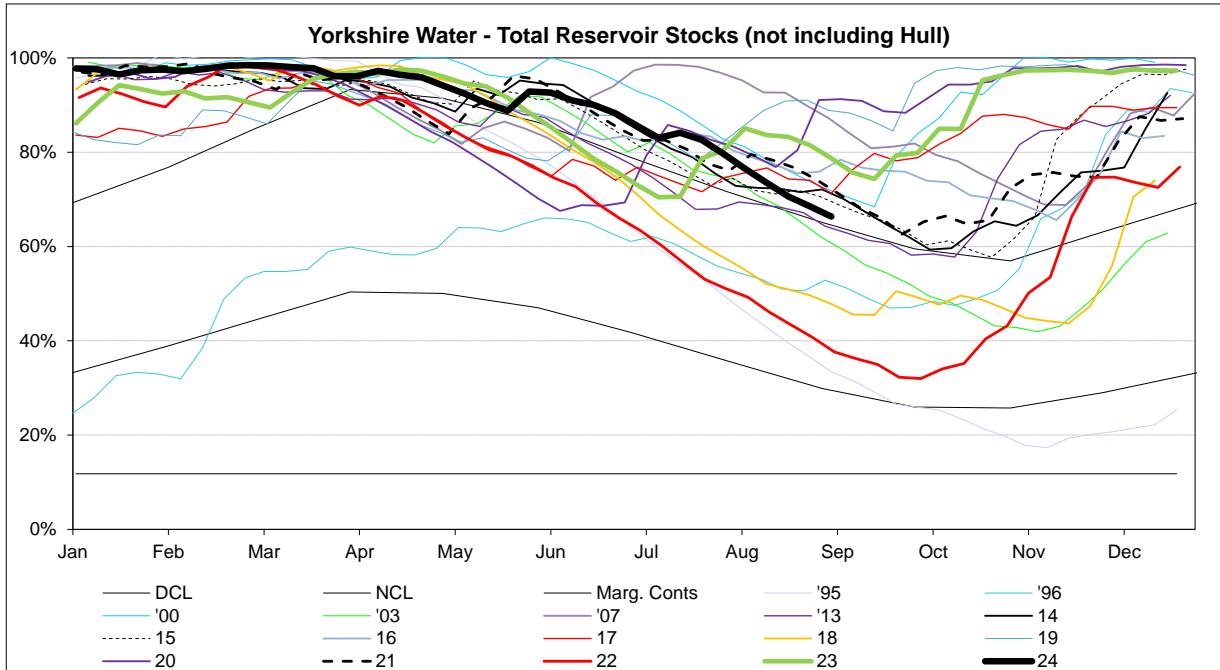


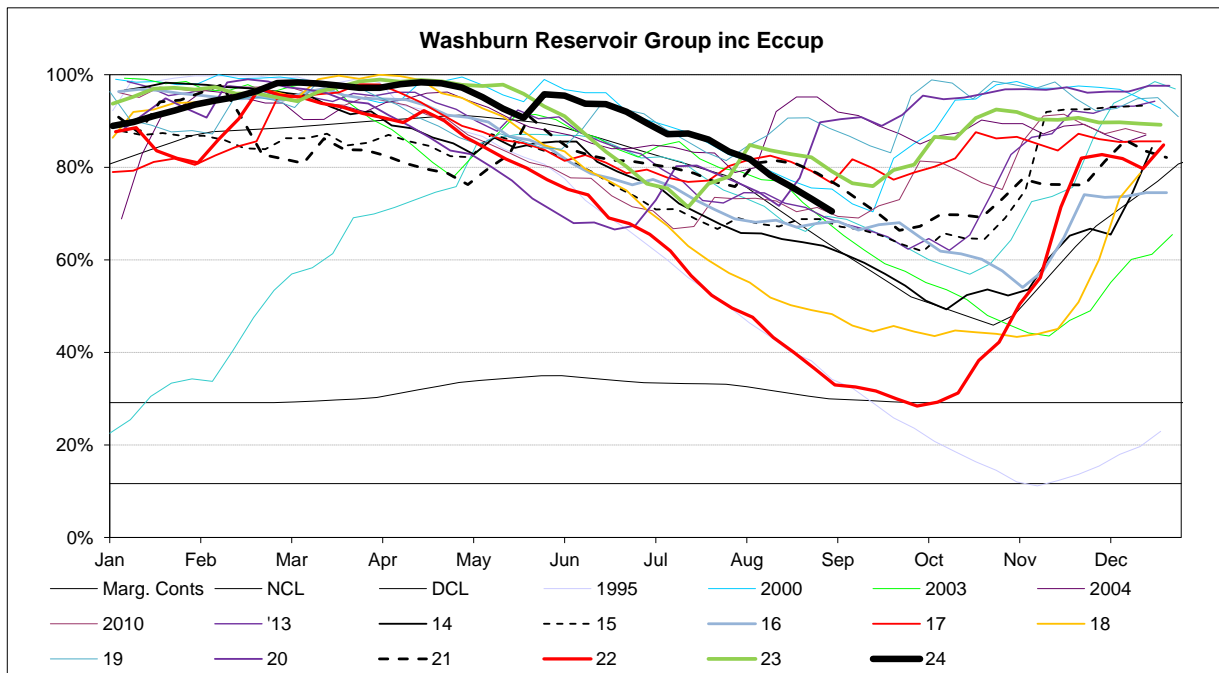
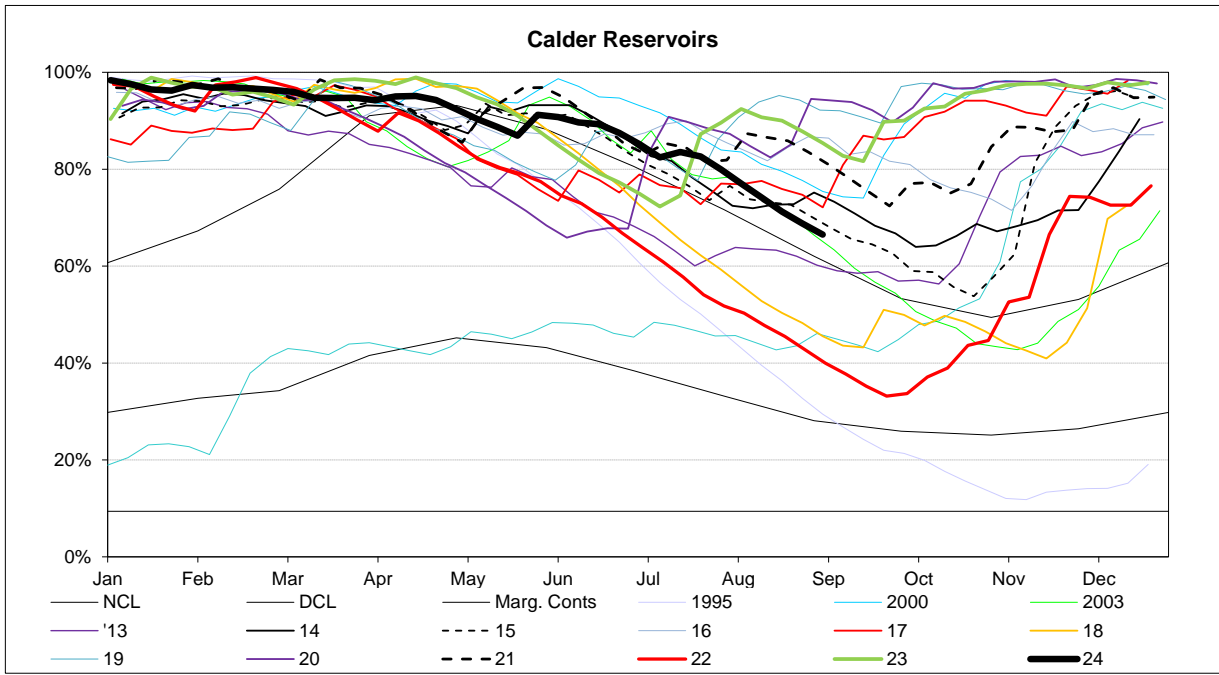


Chalk (Hull Aquifer)  
Westwood Observation Borehole - TA 020 399

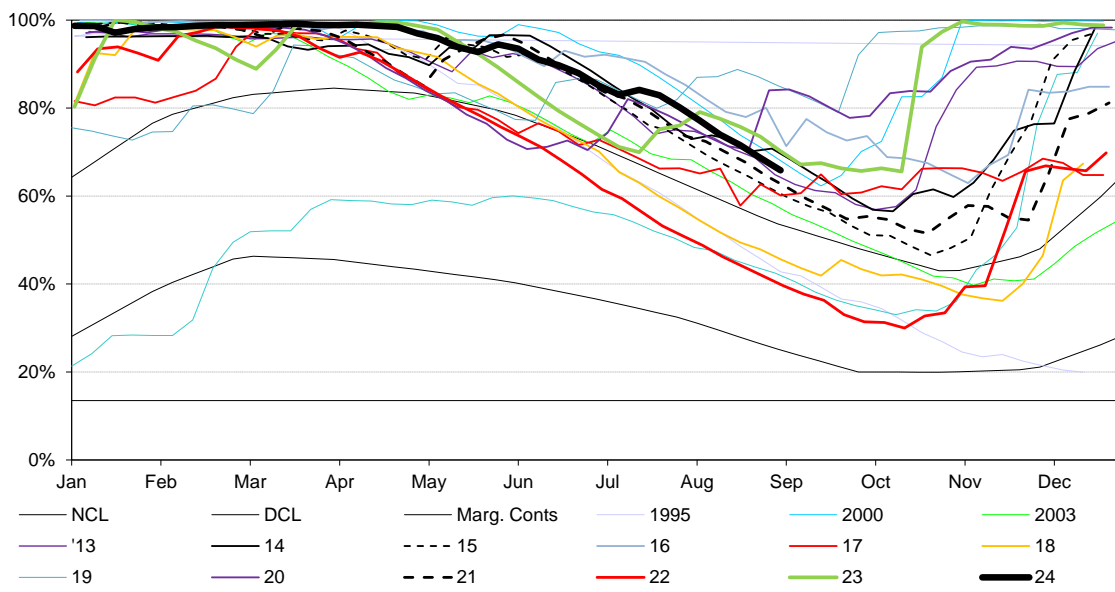


RESERVOIR STOCKS	02/09/2024		% Change	Planned Reservoir Safety Work	Required Drawdown & Duration	
Reservoir Group	% Stocks @	% Change	last week	Reason for Drawdown		
Calderdale (excl Withens Clough)	48.9%	-1.4%	-1.9%	Leakage Investigation Access for Tunnel Grouting Middle IRE Increase Drawdown Capacity	Aug 24 - Oct 24 Apr 24 - Oct 24 May 25 - Sept 25	82.0% 28.0% 21.0%
Boothwood/Ryburn ( incl WC)	75.1%	-1.9%	-2.3%			
(Gorpley)	57.4%	-1.8%	-1.1%			
Huddersfield	70.8%	-3.0%	-2.9%			
Brownhill/Digley	70.5%	-3.2%	-2.7%			
Riding Wood	76.2%	-8.8%	-3.0%			
Walshaw Dean Lower	15.0%	-1.5%	-1.9%			
Widdop	22.0%	0.9%	0.1%			
<b>Calder Area Total</b>	<b>66.5%</b>	<b>-2.3%</b>	<b>-2.5%</b>			
Nidd/Barden/Chelker	64.5%	-2.2%	-1.5%			
Grimwith	69.5%	-0.6%	-0.7%			
Worth Valley	80.1%	-2.3%	-2.3%			
March Ghyll	78.6%	0.0%	-0.8%			
Ponden	75.7%	-0.9%	-1.4%			
Thornton Moor	51.3%	-6.9%	-8.2%			
Chelker	91.9%	-1.2%	-1.6%			
<b>North West Area Total</b>	<b>68.7%</b>	<b>-1.4%</b>	<b>-1.1%</b>			
Washburn/Eccup Resrs.	70.5%	-2.7%	-2.7%	Outlet Channel Repairs Bridge Repairs Inspection of Overflow and Upstream Face	Dates tbc Dates tbc Aug 23 - Sept 23	93.0% TBC 83.0%
Thornton Steward	91.4%	3.1%	1.6%			
Leighton/Roundhill	62.5%	-3.0%	-3.0%			
Haverah Park	67.6%	-2.8%	7.3%			
Swinsty	63.9%	0.3%	-0.7%			
Thruscross	77.6%	-5.5%	-4.9%			
Cod Beck	83.9%	-5.1%	-5.5%			
<b>North Area Total</b>	<b>69.1%</b>	<b>-2.6%</b>	<b>-1.6%</b>			
Don Valley & Winscar	71.8%	-2.4%	-2.3%	Damage to Overflow Channel Install Overflow Debris Barrier Overflow Investigation 0.0%	Nov 23 - Oct 24 June 24 - Aug 24 Dates tbc 0.0%	89.0% 95.0% 95.0% 0.0%
Rivelin Valley	71.1%	-5.9%	-3.5%			
Little Don	54.1%	-1.7%	-2.6%			
Ewden Valley	83.0%	17.2%	-4.2%			
Loxley Valley	88.7%	11.6%	-3.0%			
Redmires	66.9%	-1.8%	-2.0%			
Redmires Upper	66.0%	0.1%	0.1%			
Redmires Middle	51.3%	-5.6%	-1.1%			
Broomhead	83.0%	17.2%	-4.2%			
Strines	90.0%	15.0%	-4.1%			
<b>South Area Total</b>	<b>73.9%</b>	<b>5.6%</b>	<b>-2.9%</b>			
Tophill Low	80.4%	-1.8%	-1.9%			
Hull Aquifer	53.7%	-0.8%	-0.7%			
<b>East Area Total</b>	<b>55.9%</b>	<b>-0.9%</b>	<b>-0.8%</b>			
<b>Regional Total (DCP) (not inc East Area)</b>	<b>67.5%</b>	<b>-0.9%</b>	<b>-2.0%</b>			
YORKSHIRE TOTAL (Supply) (not inc East Area)	<b>67.7%</b>	<b>-2.2%</b>	<b>-2.2%</b>			





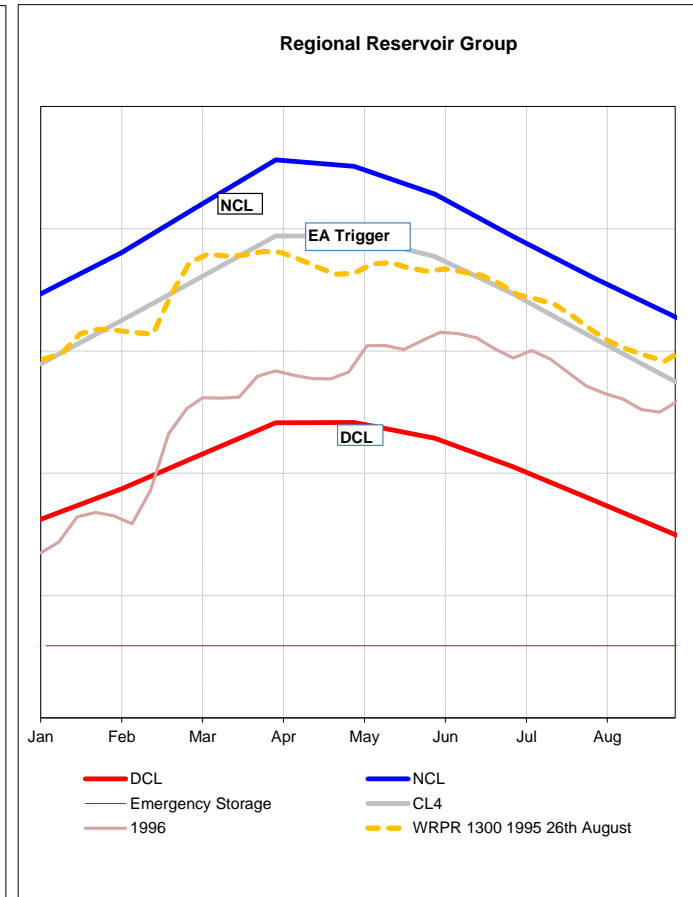
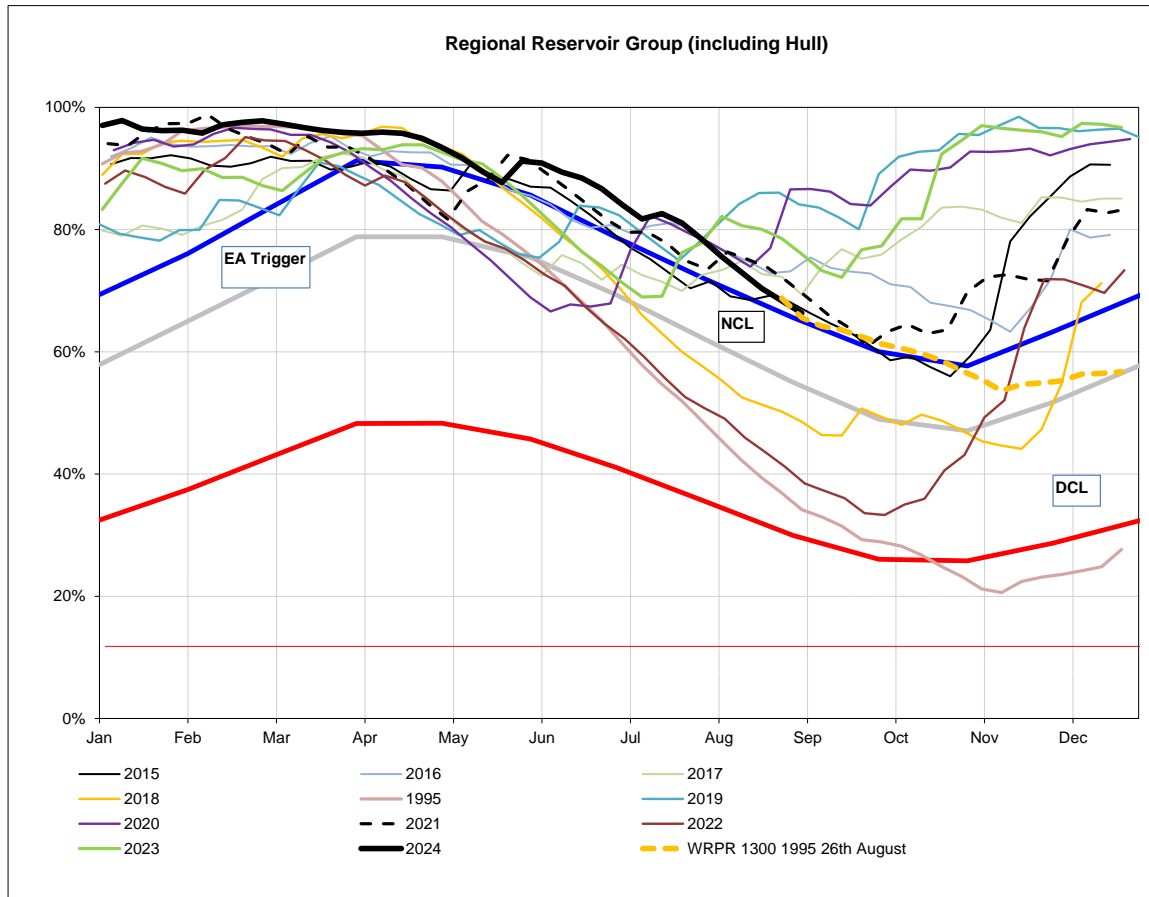
### Sheffield & Barnsley Reservoirs



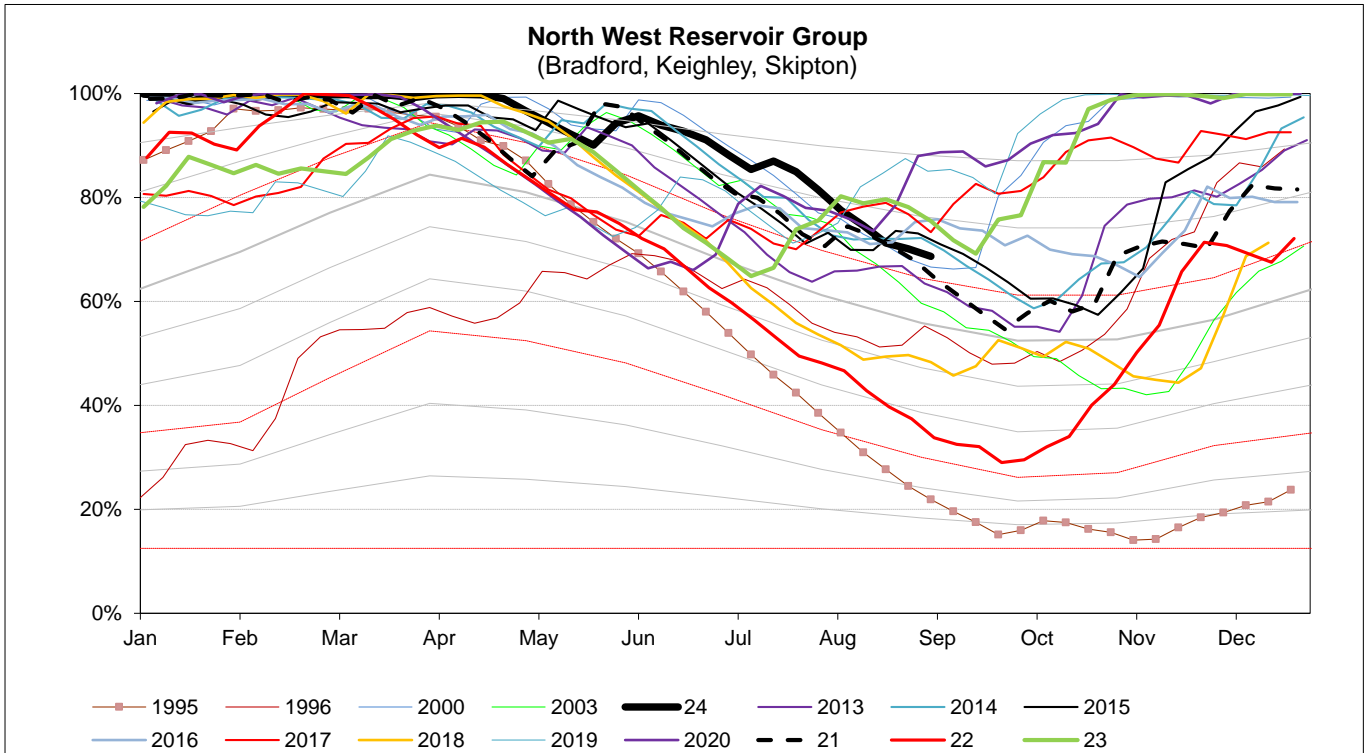
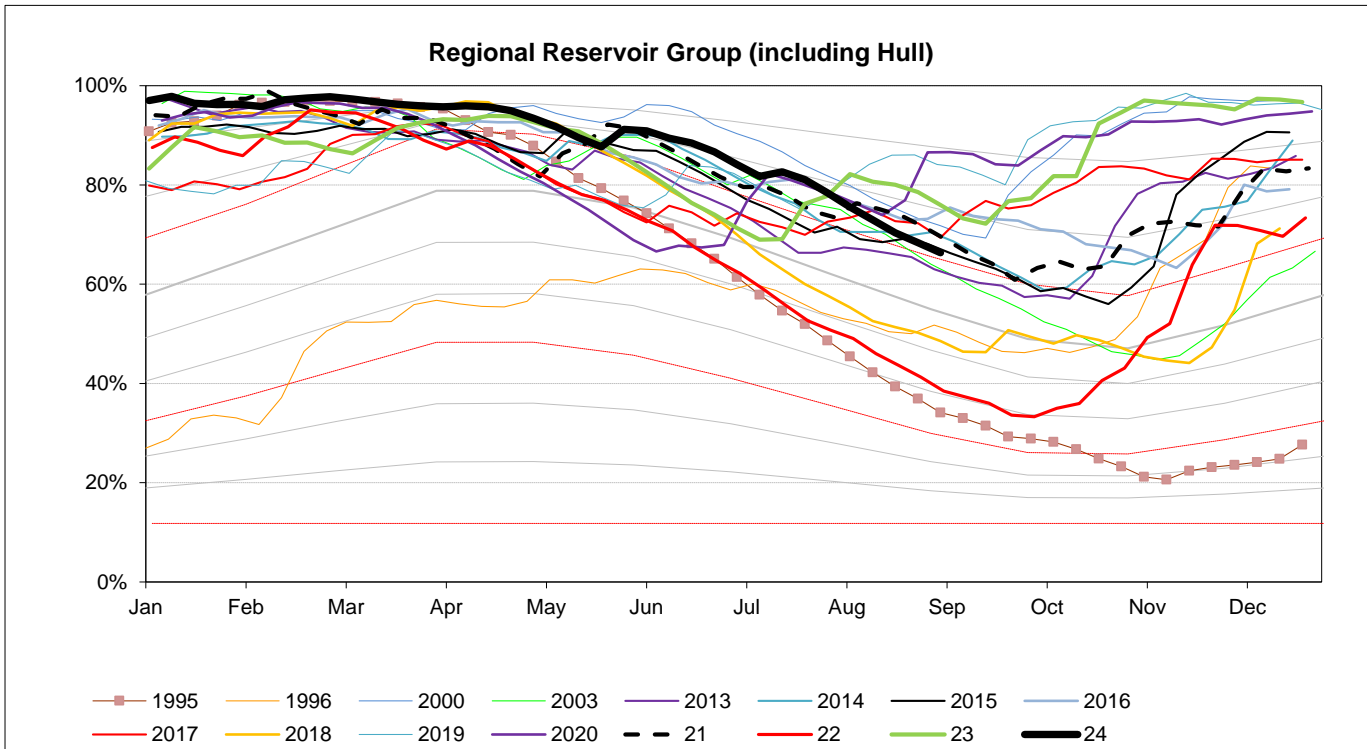
## EA STOCKS REPORT

29 July 2024

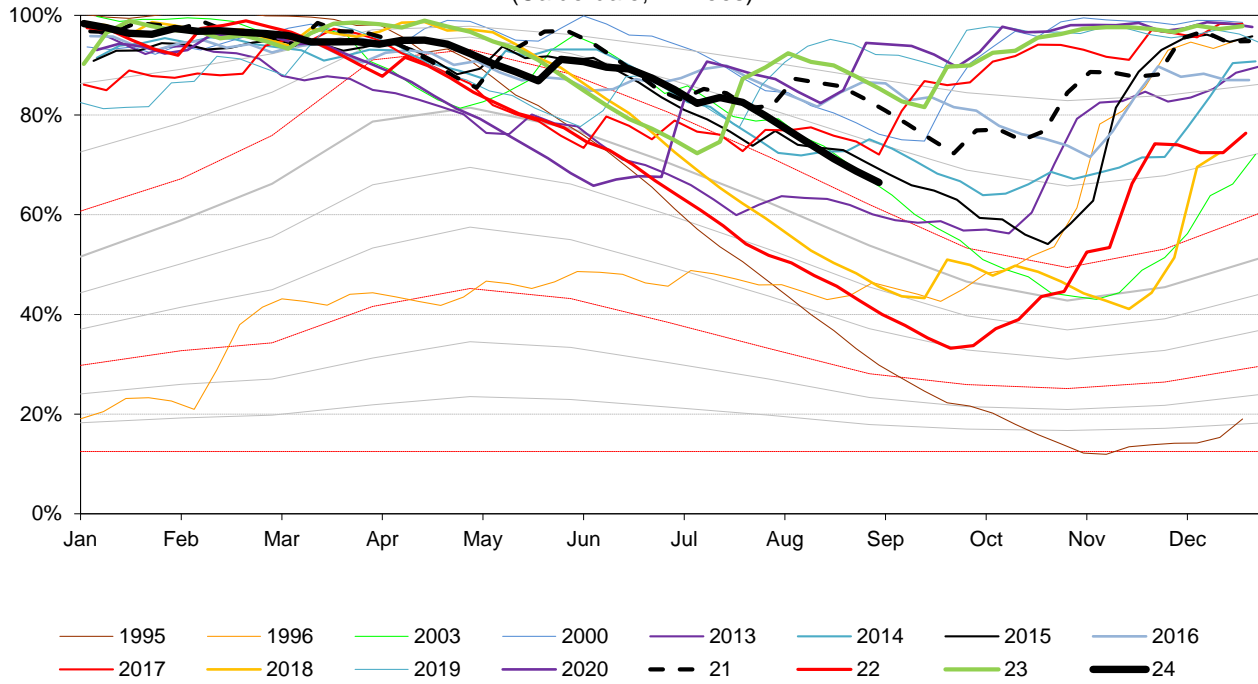
EA Stocks Report	02/09/2024						
	MI	%	% change		MI	%	% change
<b>South West Area Supply Reservoirs</b>				<b>South Area Supply Reservoirs</b>			
Calderdale Group	5448	48.9%	-1.4%	Don Valley	1748	84.0%	-1.6%
Huddersfield Group	9990	70.7%	-3.1%	Little Don	3984	54.1%	-1.7%
Brownhill/Digley excl Holmestye:	3958	70.5%	-3.1%	Ewden Valley	4098	83.0%	17.2%
Boothwood/Ryburn	8961	76.6%	-2.0%	Loxley Valley	6095	88.7%	11.6%
				Rivelin	579	71.1%	-5.9%
<b>South West Reservoir Group</b>	29281	66.5%	-2.3%	Redmires	1860	66.9%	-1.8%
Bradford Area Supply Reservoirs				<b>South Reservoir Group</b>	18364	73.9%	5.6%
Gouthwaite	2544	43.8%	1.0%	Winscar Group	6486	69%	-2.6%
Grimwith	15119	69.5%	-0.6%				
Nidd/Barden/Chelker	12376	64.5%	-2.2%	Compensation Reservoirs			
Rombalds/Thornton Group	1571	70.4%	-2.0%	Scout Dike	312	44.9%	-6.1%
				Underbank	2174	75.8%	-2.5%
Skipton Area Supply Reservoirs				Morehall	1527	70.3%	12.4%
Embsay	698	96.6%	-1.4%	Damflask	4209	82.4%	10.6%
Worth Valley Group	2652	80.1%	-2.3%				
<b>North West Reservoir Group</b>	32417	68.7%	-1.4%	<b>North Area Supply Reservoirs</b>			
				Washburn	16472	70.5%	-2.7%
Compensation inc Silsden	1470	62.5%	-3.2%	Eccup	4837	69.0%	-2.5%
Gouthwaite	2544	43.8%	1.0%	Leighton/Roundhill	4625	62.5%	-3.0%
March Ghyll & Elslack Reservoirs excluded for consistency with stocks predictions in WRAPSIM				Haverah Park	677	67.6%	-2.8%
				Lumley Moor	353	92.5%	-1.0%
				Thornton Steward	867	91.4%	3.1%
East Area Supply Reservoirs							
Tophill Low	1353	80.4%	-1.8%	North Reservoir Group	22993	69.1%	-2.6%
Hull Aquifer	10206	53.7%	-0.8%				
				Lindley Wood Compensation	1199	41.0%	-5.3%
<b>East Reservoir Group</b>	11559	55.9%	-0.9%				
				Regional Reservoir Group	121100	67.5%	-0.9%
				(sum of South West, North West, East, South, North & Winscar Reservoirs)			



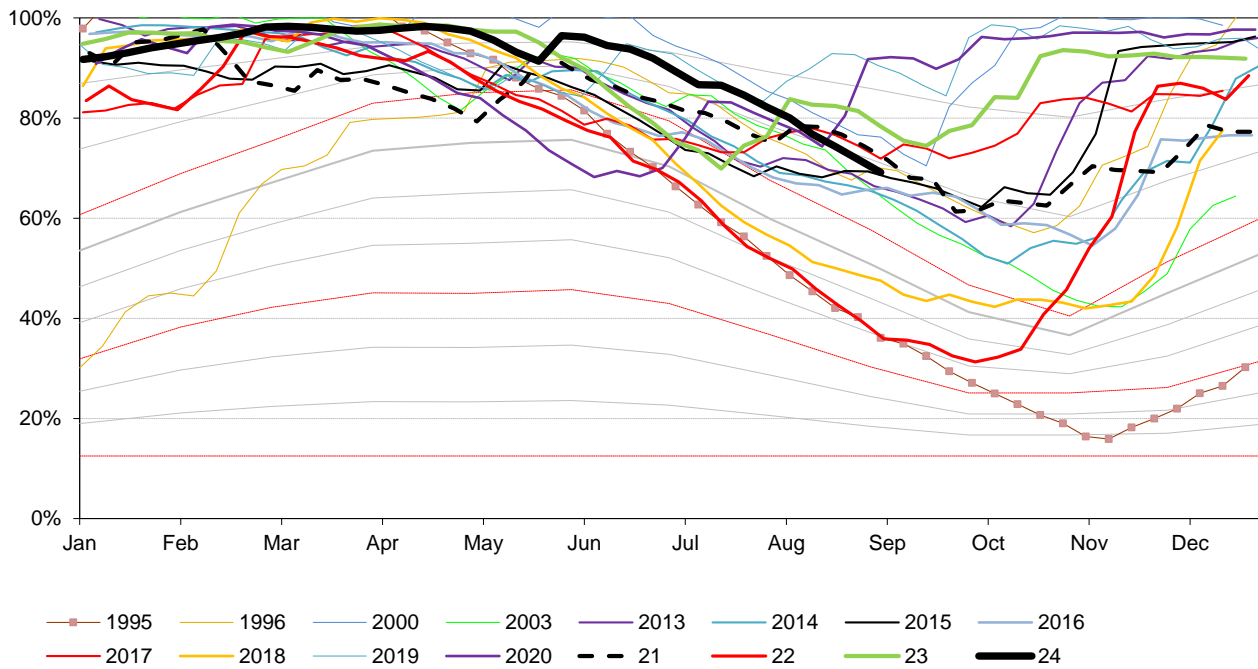
Triggers	
EA early warning (CL4)	Water resources to advise EA on production
Hosepipe Restrictions	When projected falling stocks fall below DCL
Drought Orders	When stocks are below DCL.



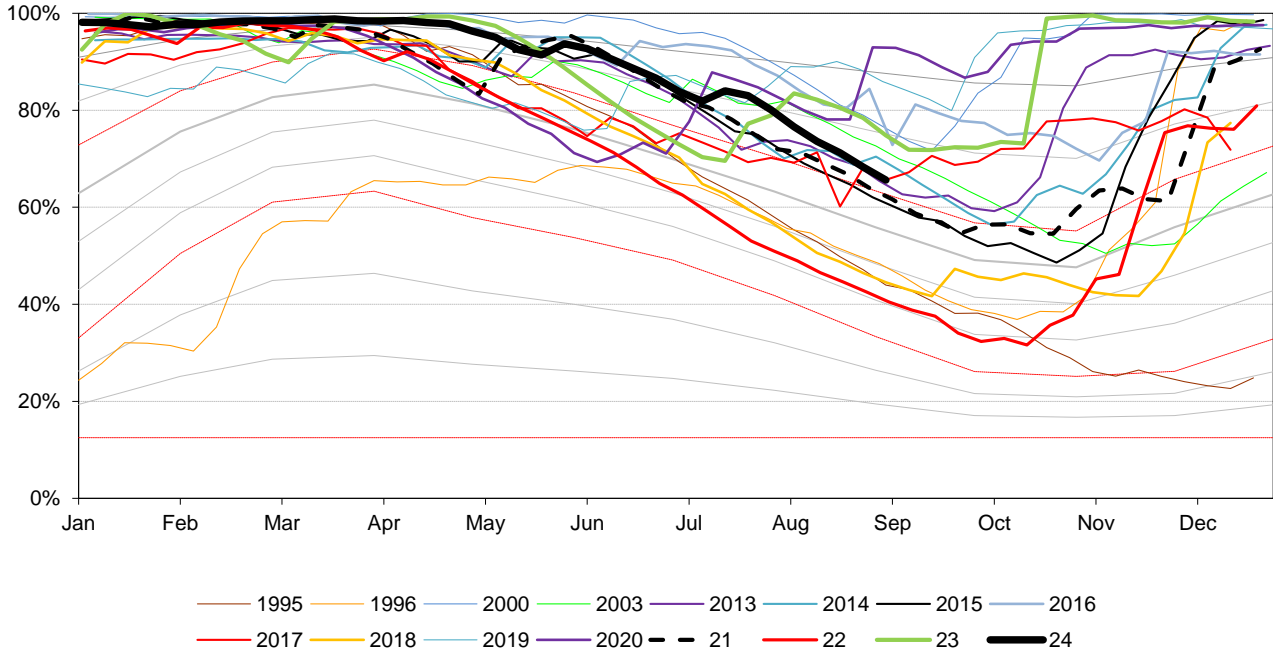
**South West Reservoir Group**  
(Calderdale, Kirklees)



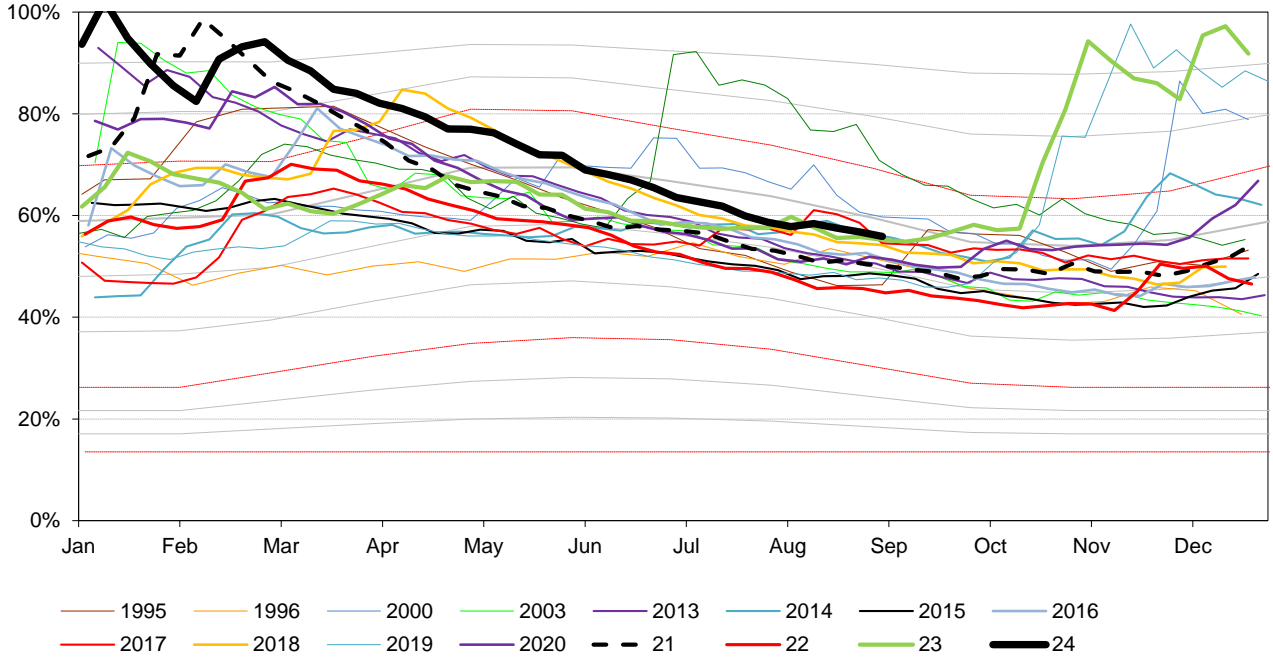
**North Reservoir Group**  
(Leeds, Harrogate)

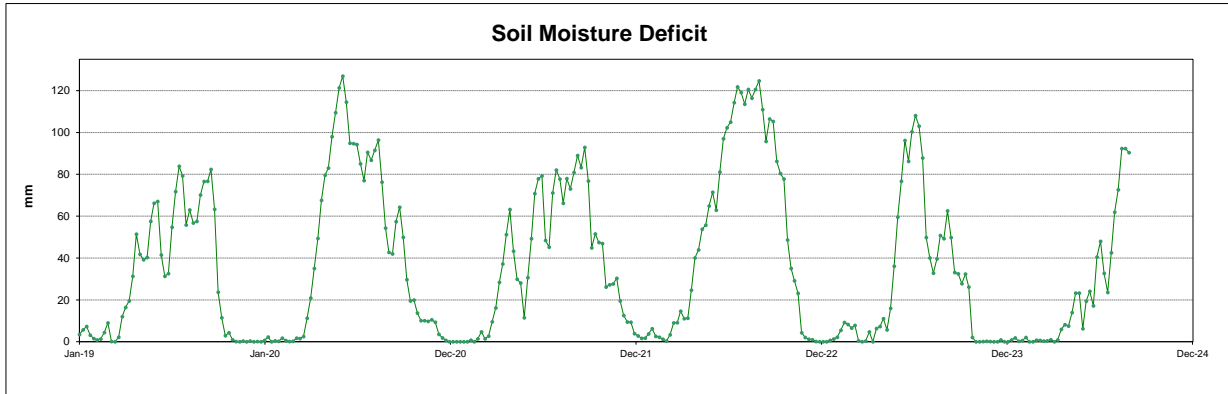
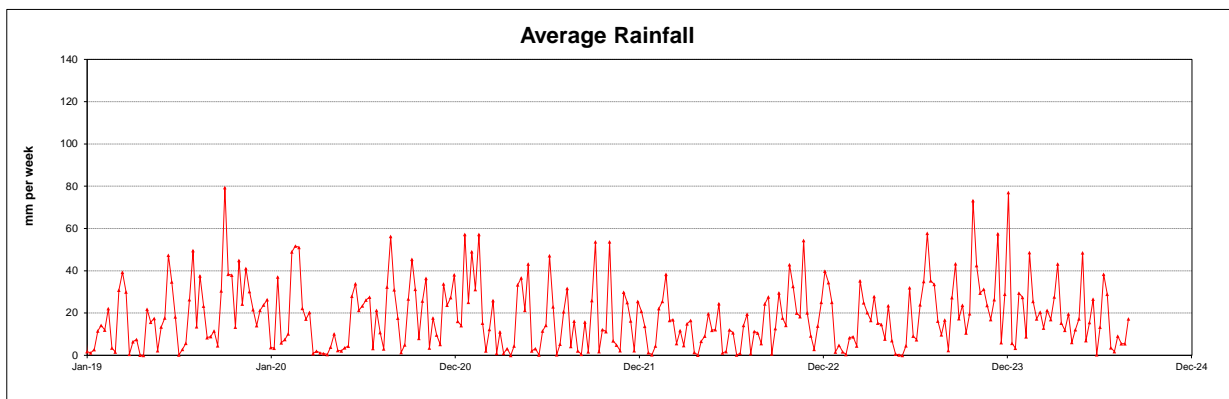
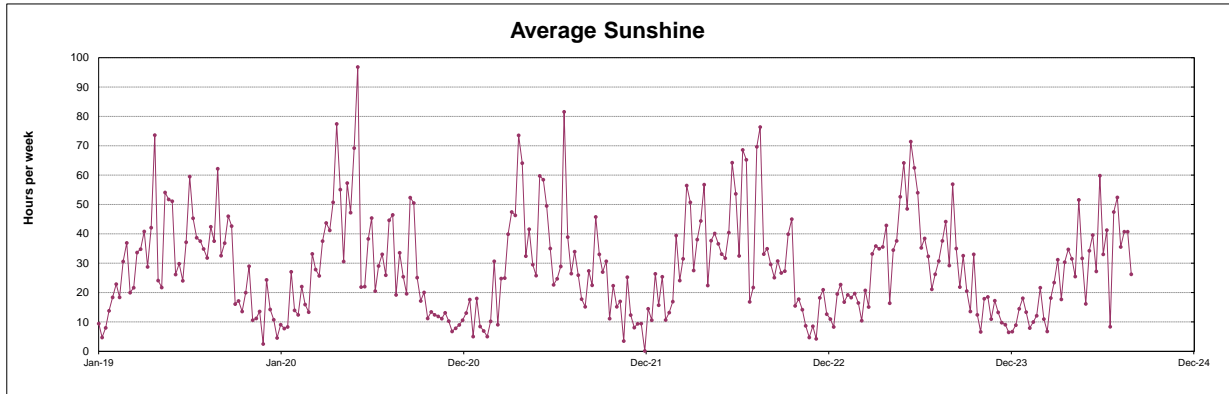


**South Reservoir Group**  
(Sheffield, Barnsley)



**East Reservoir Group**  
(Hull Aquifer, Tophill Low)





This page will normally be updated monthly (approx mid month).

This data may be subject to change following routine validation checks.

Where showing a negative value, this is normal at certain sources, due to the imports of water into that source being greater than the volumes abstracted.

Annual licences run from April to March.

Units in MI

Run date 08/08/2024

Serial No	Source	Reporting Year	August (up to 7th)	Year to date MI	Annual Limit	% of Annual Limit
02/27/023/332	Ainderby Steeple Boreholes	C	30	922	1760	52%
03/28/083/010	Armthorpe Boreholes	C	40	1624	3319	49%
03/28/083/012	Austerfield Boreholes	C	93	2593	11615	22%
02/27/022/020	Aysgarth & Newbiggin Springs	C	4	108	341	32%
02/27/012/035	Baitings, Ryburn & Blackhouse reservoirs	C	83	2358	20457	12%
02/27/023/032	Bellerby Borehole and springs near Bellerby	F	0	20	1250	2%
02/27/022/209	Birk Gill & River Burn	C	0	2261	6400	35%
02/27/012/254	Boothwood Reservoir & associated catchwaters	C	79	2139	20457	10%
02/27/10/112	Boshaw Whams Reservoir	C	0	0	55	0%
03/28/083/105	Boston Park Boreholes	C	44	1352	3318	41%
02/27/024/305	Brayton Barff Boreholes	C	0	0	2250	0%
02/26/030/002	Bridlington	C	41	1141	2500	46%
02/27/005/031	Broomhead Reservoir	F	253	4186	12410	34%
02/26/030/004	Burton Agnes	C	18	546	1000	55%
02/27/018/080	Carlton Hanger Lane Boreholes	C	45	1737	3500	50%
02/27/018/079	Carlton Mill Lane Boreholes	C	38	1122	3800	30%
02/27/019/009	Carr Bottom Reservoir, Burley Woodhead	C	0	21	409	5%
02/27/023/340	Catterick Boreholes	F	45	840	2920	29%
02/27/027/136	Cayton Carr Lane Boreholes	C	14	959	3928	24%
02/27/027/163	Cayton Station Road Borehole	C	39	493	2646	19%
02/27/019/137	Chelker Reservoir	C	-19	1980	5000	40%
02/27/023/031	Coalsgarth Springs	C	2	58	750	8%
02/27/011/064	Colne Valley Catchwaters	F	104	1246	5840	21%
02/26/032/126	Cottingham Well	C	160	4417	18184	24%
02/27/018/081	Cowick Boreholes	C	86	2660	5250	51%
02/27/023/046	Cranehow & Downholme Springs	C	0	0	318	0%
02/27/023/030	Crumma, Newsham & Gandale Springs	C	15	533	1364	39%
02/27/005/030	Dale Dyke & Agden Reservoirs	F	219	3581	12410	29%
02/27/012/261	Dean Head & Scammonden	F	51	614	3650	17%
02/27/19/121	Dib Spring, Hawkswick	C	0	0	27	0%
02/26/032/126	Dunswell Well	C	190	5186	16593	31%
NE/27/025/021	East Ness Boreholes	F	65	1180	5680	21%
02/26/031/087	Elmswell Wold Borehole	C	9	111	1273	9%
02/27/015/045	Embsay Reservoir	C	-9	1522	1846	82%
02/27/016/196	Esholt Sewage Treatment Works	C	0	0	88	0%
02/26/032/124	Etton Boreholes	C	35	858	5100	17%
03/28/083/012	Finningley Boreholes	C	69	2184	6780	32%
02/27/022/328	Fossdale (High Shaw) Springs	C	2	61	227	27%
02/27/018/120	Goosehouse Boreholes	F	74	1373	3500	39%
02/27/012/043	Gorpley Reservoir	C	0	0	1823	0%
02/27/016/022	Graincliffe Reservoir	F	16	541	2728	20%
02/27/012/037	Green Withens Ringstone Res & catchwater	C	91	3065	20457	15%
02/27/019/051	Greenhow Tunnel (Nidd Aqueduct) Dale Head Intake	C	0	0	214	0%
02/27/019/052	Greenhow Tunnel (Nidd Aqueduct) No.2 Access Shaft	C	0	0	6819	0%
NE/27/019/005	Grimwith Reservoir to Nidd Aqueduct	F	80	447	3650	12%
02/26/030/003	Haiathorpe Boreholes	C	93	2682	5000	54%
03/28/083/012	Hatfield Boreholes	C	50	977	3319	29%
03/28/083/100	Hatfield Woodhouse Boreholes	C	0	0	3320	0%
02/27/029/010	Hazel Head Springs	C	11	356	1162	31%
02/27/012/041	Hebden, Luddenden & Hebble Valley Resrs	F	260	4872	15695	31%
02/27/018/077	Heck Boreholes	C	0	357	2489	14%
03/28/083/012	Highfield Lane Boreholes	C	54	2067	11615	18%
02/27/023/685	Hollin Hill Borehole	F	1	8	45	17%
02/27/010/063	Holmestyes & Digley Reservoirs	F	64	1068	5840	18%
02/27/22/024	Horsehouse Spring, leyburn	C	0	0	33	0%
02/27/027/002	Howe Hill Well	F	19	334	1014	33%
02/26/031/006	Hutton Cranswick	C	11	306	796	38%
02/27/005/012	Ingbirchworth Reservoir & Annat Royd Intake	C	-47	839	3637	23%
02/27/005/202	Ingbirchworth South Borehole	F	1	18	132	14%
02/27/027/058	Irton	C	106	3214	8215	39%
02/27/21/015	John O'Gaunts and Beaverdyke Reservoirs	C	0	0	1909	0%
02/27/014/010	Keighley Moor Reservoir	F	13	214	6951	3%
02/27/025/128	Keld Head Boreholes	C	40	1173	3319	35%
02/26/032/126	Keldgate Boreholes	C	15	897	5819	15%
02/26/031/002	Kilham	C	0	93	1818	5%
02/27/005/032	Langsett Reservoir	F	276	5013	17155	29%
02/27/022/210	Leighton Reservoir & Spruce Gill stream intake	C	159	4599	13184	35%
03/28/083/107	Littleworth Borehole	C	0	0	1659	0%
02/27/028/270	Loftsome Bridge ASR Borehole No.1	C	0	0	750	0%
02/27/014/009	Lower Laithe Reservoir	F	37	887	6951	13%
02/27/005/011	Midhope Reservoir & Knoll Brook Intake	F	65	1379	17155	8%
02/26/034/006	North Newbald	C	0	0	1137	0%
03/28/083/012	Nutwell Boreholes	C	52	1740	4983	35%
02/27/019/006	Panorama, Hilltop & Old Reservoirs & Springs	C	0	137	1000	14%
02/27/018/078	Pollington Boreholes	C	49	1479	5000	30%
02/27/014/058	Ponden Reservoir	F	56	450	6951	6%
02/27/016/023	Reva Reservoir, Hawkesworth	C	0	954	1364	70%
02/27/005/029	Rivellin and Redmires Reservoirs	F	56	901	8030	11%
02/27/028/017	River Derwent at Elvington	F	1115	17906	75000	24%
02/27/028/083	River Derwent at Loftsome Bridge	F	591	8758	30400	29%
02/27/029/012	River Esk	C	69	1903	7823	24%
02/26/031/047	River Hull & West Beck	C	298	8571	25000	34%
02/26/032/194	River Hull for Sewer Cleaning	C	0	0	91	0%
02/27/024/078	River Ouse at Acomb	F	179	3411	35000	10%
02/27/024/158	River Ouse at Moor Monkton	C	597	17404	73000	24%
02/27/022/214	River Ure at Kilgram Bridge	C	20	1624	15000	11%
02/27/020/196	River Wharfe at Arthington	F	1	34	19009	0%
02/27/019/129	River Wharfe at Lobwood	F	562	8302	27392	30%

03/28/083/012	Rossington Bridge Boreholes	C	0	0	5172	0%
02/27/022/027	Roundhill and Lumley Moor Reservoirs	C	0	5	3500	0%
02/27/005/013	Royd Moor Reservoir & Intakes	C	21	726	2955	25%
02/27/021/016	Scargill Reservoir	C	20	605	1932	31%
02/27/021/092	Scarhouse & Angram Resvrs with tunnel & catchwater	C	733	22990	38164	60%
02/27/15/149	Silsden Beck, Stilling-Basin at foot of Silsden Reservoir Embankment	C	0	0	10	0%
02/26/032/126	Springhead Well	C	151	6410	13638	47%
02/27/022/021	Stalling Busk & Marsett Springs	C	0	0	33	0%
02/27/022/208	Stock Beck, Carlesmoor Beck & River Laver	C	0	822	3500	23%
02/27/023/684	Stubbing Nook Borehole	F	9	11	135	8%
03/28/083/012	Thornham Boreholes	C	69	2147	6213	35%
02/27/016/160	Thornton Moor & Stubden Reservoirs	C	52	559	6214	9%
02/27/012/038	Turvin Clough	C	0	73	4014	2%
02/27/019/054	Upper & Lower Barden Reservoirs	C	146	3132	14223	22%
02/27/020/088	Washburn Valley Reservoirs	C	596	20093	43800	46%
02/27/015/041	Watersheddles Reservoir	F	1	381	6951	5%
02/27/016/021	Weecher Reservoir	C	0	92	909	10%
02/27/011/065	Wessenden Valley, Blackmoorfoot & Deerhill	F	133	2972	12410	24%
02/27/023/034	West Stonesdale (Garland Hill) Springs	C	0	0	282	0%
02/27/015/042	Whinney Gill & Jenny Gill Reservoirs	C	0	88	377	23%
02/27/005/026	Winscar, U & L Windleden, Harden & Snailsden	F	219	3025	10140	30%
02/27/012/036	Withens Clough Resr & Catchwater	C	34	1201	3319	36%
02/27/010/011	Yateholme, Riding Wood, Ramsden & Brownhill	F	35	1052	6820	15%

		August (upto 7th)	Year to date MI	Annual Limit	% of Annual Limit
<b>Licences with Aggregated Annual Quantities</b>					
Baitings, Ryburn, Boothwood, Green Withens	C	254	7563	20457	37%
Langsett, Midhope	F	340	6392	17155	37%
Worth Valley	F	108	1933	6951	28%
River Derwent (Elvington, Loftsme)	F	1706	26664	94841	28%
Cayton, Irton	C	160	4665	10700	44%
Selby Boreholes	C/F	292	8727	25283	35%
Doncaster Wellfield	C	472	14685	30295	48%
Doncaster Sub Group	C	387	11708	26049	45%
Austerfield & Highfield Lane	C	147	4661	9956	47%
Hull Groundwater Sources	C	516	16910	32850	51%

**Third Party Agreements (Calendar Year)**

Source	Reporting Year	Units in MI		Run date		
		Last calendar month MI	Year to date MI	Annual Limit	01-Aug-24	
CRT, Hudds Narrow Canal	C	184	580	1273	46%	
Severn Trent Ladybower Reservoir	C	1578	12823	21550	60%	

Reading date: 12-Aug-24

	Reporting Year	Year to date MI	Annual Limit	% of Annual Limit
Winscar To Langsett Transfer Usage	F	468	2482	19%