

1. Rainfall

The Yorkshire Region Has Received 59.8% of LTA for November

2. Reservoirs (surface water supply reservoirs not including Hull)

Over the Past Week Our Reservoir Stocks Have Increased By 6.83% To 82.7%

3. Rivers

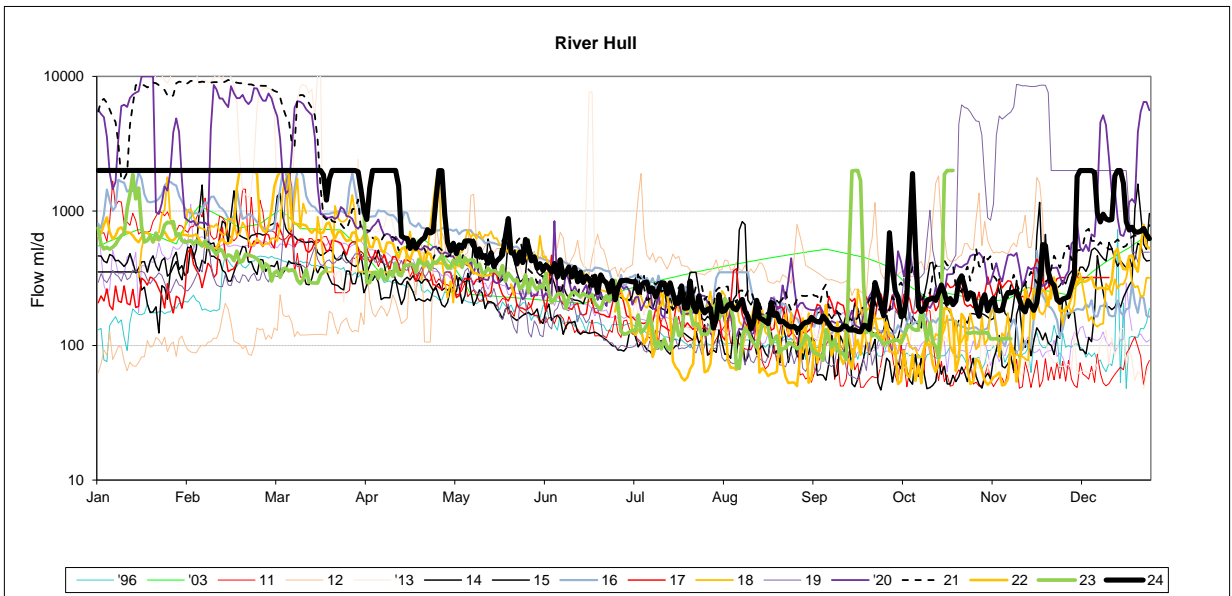
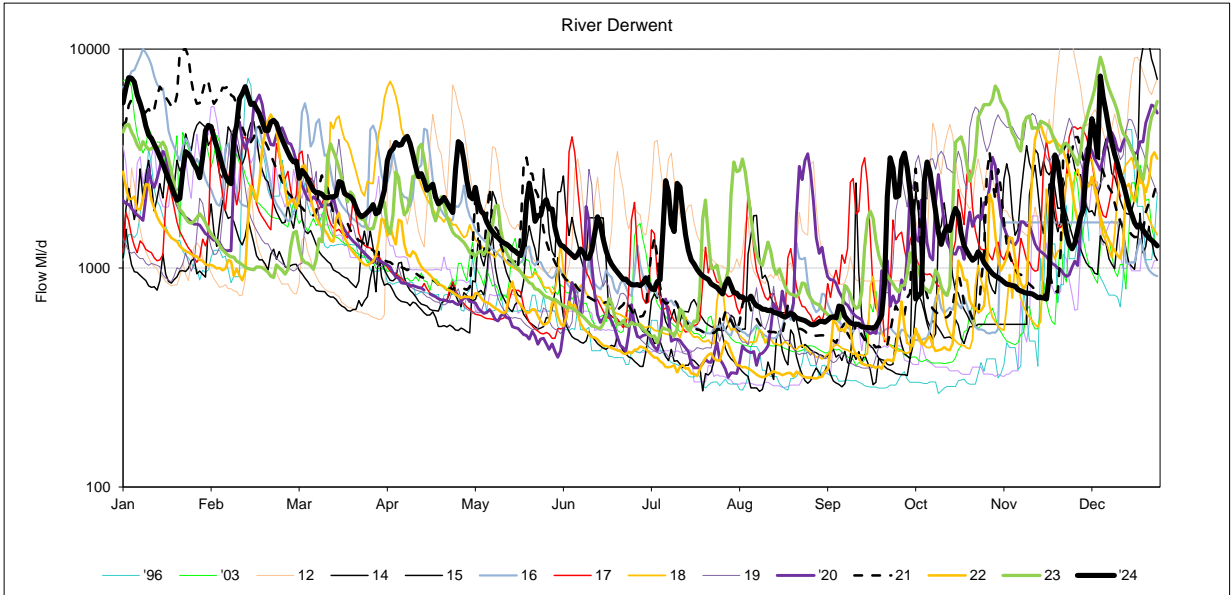
All of Our Rivers are Above Critical Levels

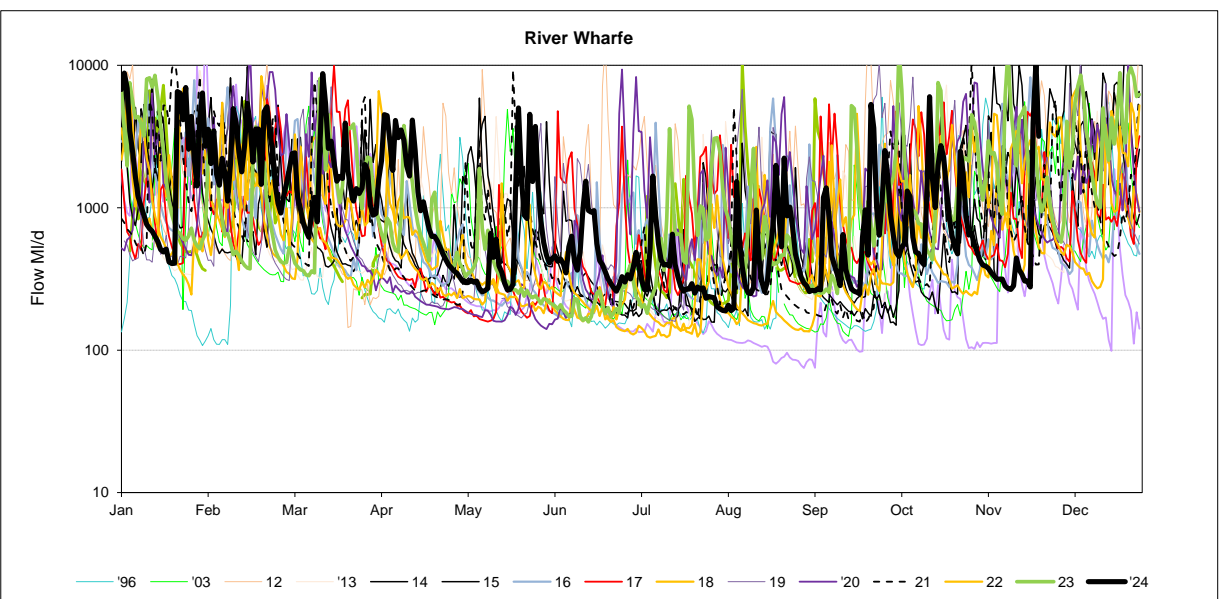
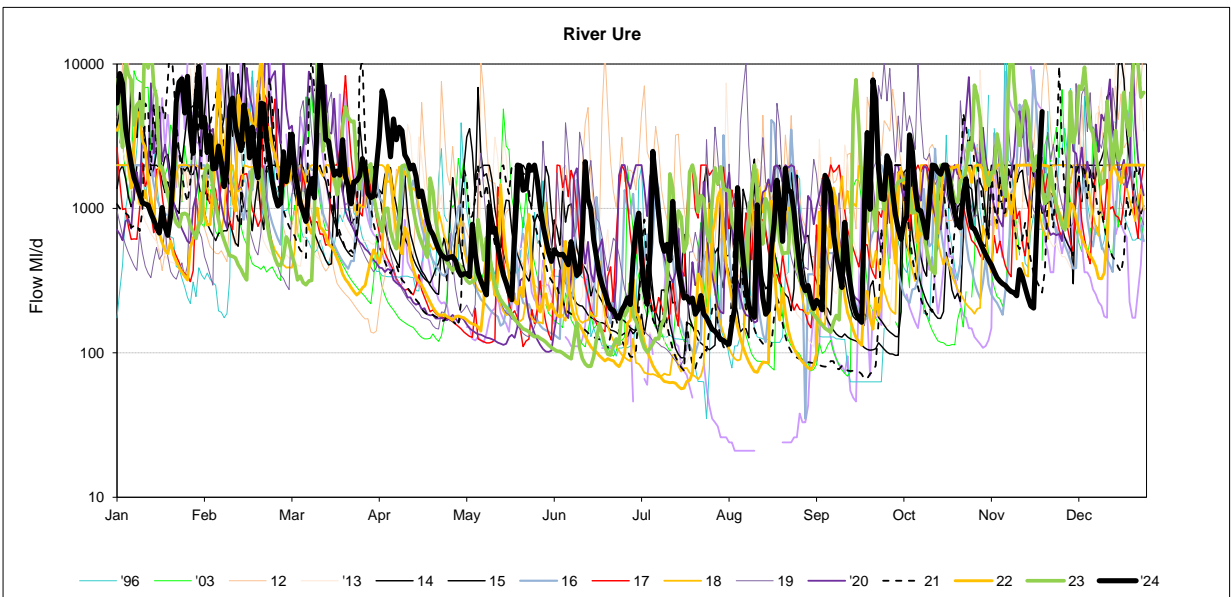
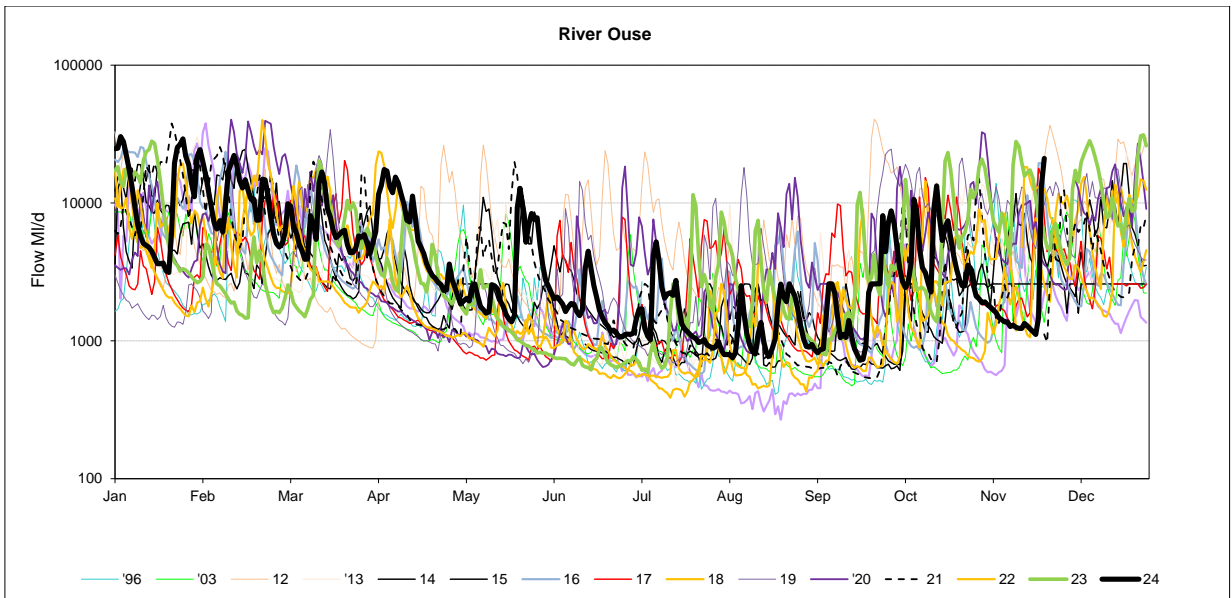
4. Demand

Regional Demand = 1290.7 MI/d (including York)

5. Comments

	Sun 24-Nov	Sun 17-Nov	Sun 10-Nov	Sun 03-Nov	Critical flow bands
Derwent	✓ 2399	✓ 761	✓ 831	✓ 943	305
Hull (using gauged (residual flows) only from 2011)	✓ 563	⚠ 188	⚠ 184	⚠ 214	45 / 159 / 227
Ouse	✓ 13206	✓ 1229	✓ 1423	✓ 1892	400 / 650 / 1000
Ure	✓ 1997	✓ 377	✓ 314	✓ 583	50 / 163 / 300
Wharfe	✓ 10496	⚠ 444	⚠ 314	⚠ 489	252 / 389 / 488 / 580





Yorkshire Region (Met Office)				England/Wales	
Month	mm	LTA	LTA(%)	mm	LTA(%)
April	95	58	165%	92	153%
May	81	55	148%	85	139%
June	48	72	67%	36	52%
July	74	69	108%	80	113%
August	30	77	39%	54	68%
September	118	71	167%	136	183%
October	72	84	86%	96	97%

SOURCE OF DATA : Hydrological Summary of Gt Britain, Institute of Hydrology

Yorkshire Water Services Data			
Rainfall Station	Total November	LTA November	LTA % November
Tophill	NDA	61	0%
Cottingham	35.3	64	55%
Bridlington	NDA	70	0%
Roundhill	52.2	104	50%
Fewston	51.7	87	59%
Osmotherley	36.8	71	52%
Scar House	70.9	149	48%
Watersheddes	82.3	143	58%
Gt Walden Edge	101.3	140	72%
Walshaw Dean	86.3	142	61%
Blackmoorfoot	87.4	132	66%
Ramsden	99.8	166	60%
Redmires	71.7	105	68%
Langsett	81.6	115	71%
YORKSHIRE REGION	71.4	119.4	60%
EAST REGION	36.1	67.5	53%
PENNINE (WEST)	75.0	124.9	60%

NDA= No data available/lack of readings, impacts % LTA for the month

SOURCE OF DATA : YWS RAIN GAUGES- weekly, so monthly data may include previous month or miss start of month

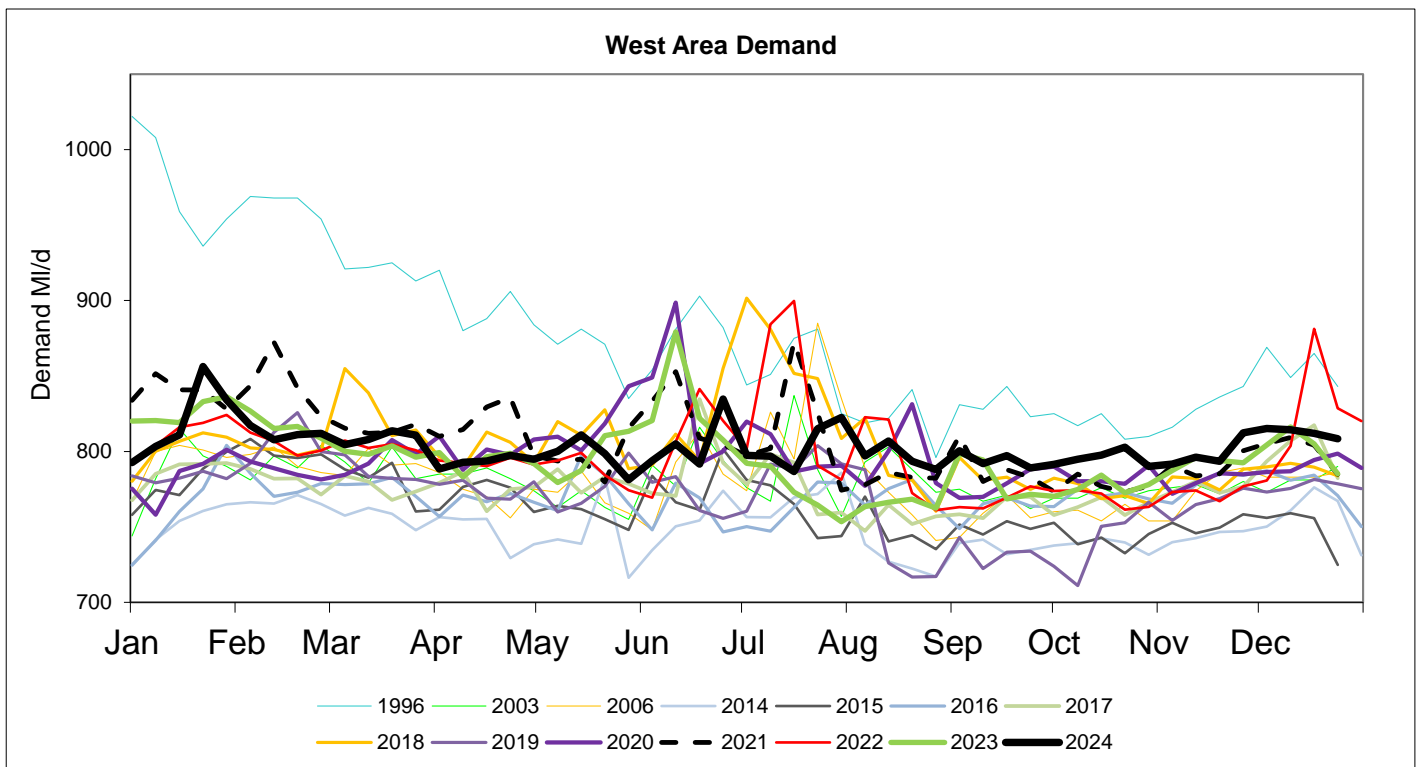
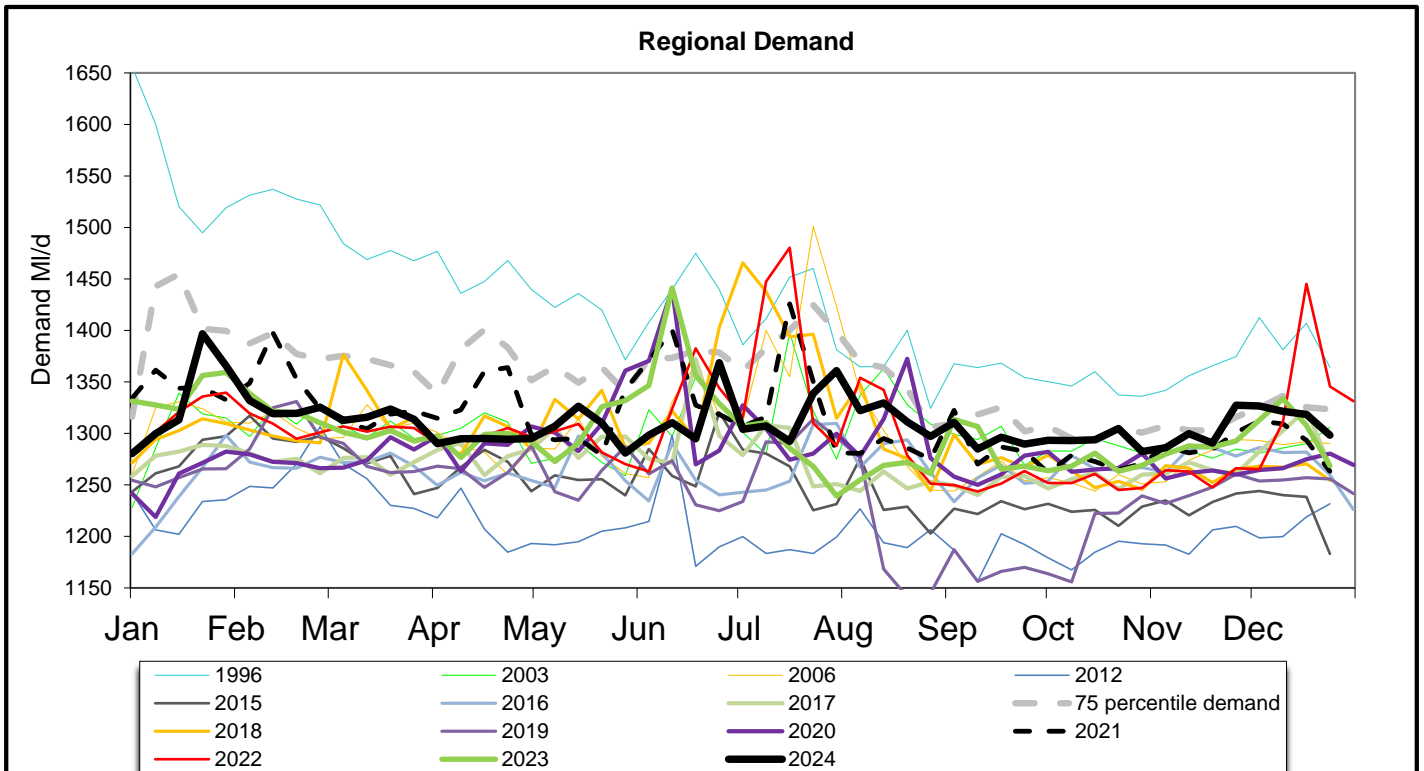
Daily Average Demand MI/d

Week Ending Wednesday	L E D S	W A K E F I L D	A M O R E L Y	S E L B Y	H A R R O G A T E	H U L L	M A L L T O N	S H E F F / B L Y	D O N C A S T E R	B R A D F O R D	C A L D E R	S K I P T O N	Y O R K A R E A	R E G I O N
23/10/2024	166	78	42	77	158	53	275	80	141	150	38	48	1305	
30/10/2024	163	76	40	75	153	54	270	79	139	148	37	48	1282	
06/11/2024	165	75	41	77	152	52	270	79	140	149	37	49	1286	
13/11/2024	170	76	41	75	158	52	271	80	140	151	38	50	1300	
20/11/2024	169	77	40	73	156	52	268	80	141	149	38	48	1291	

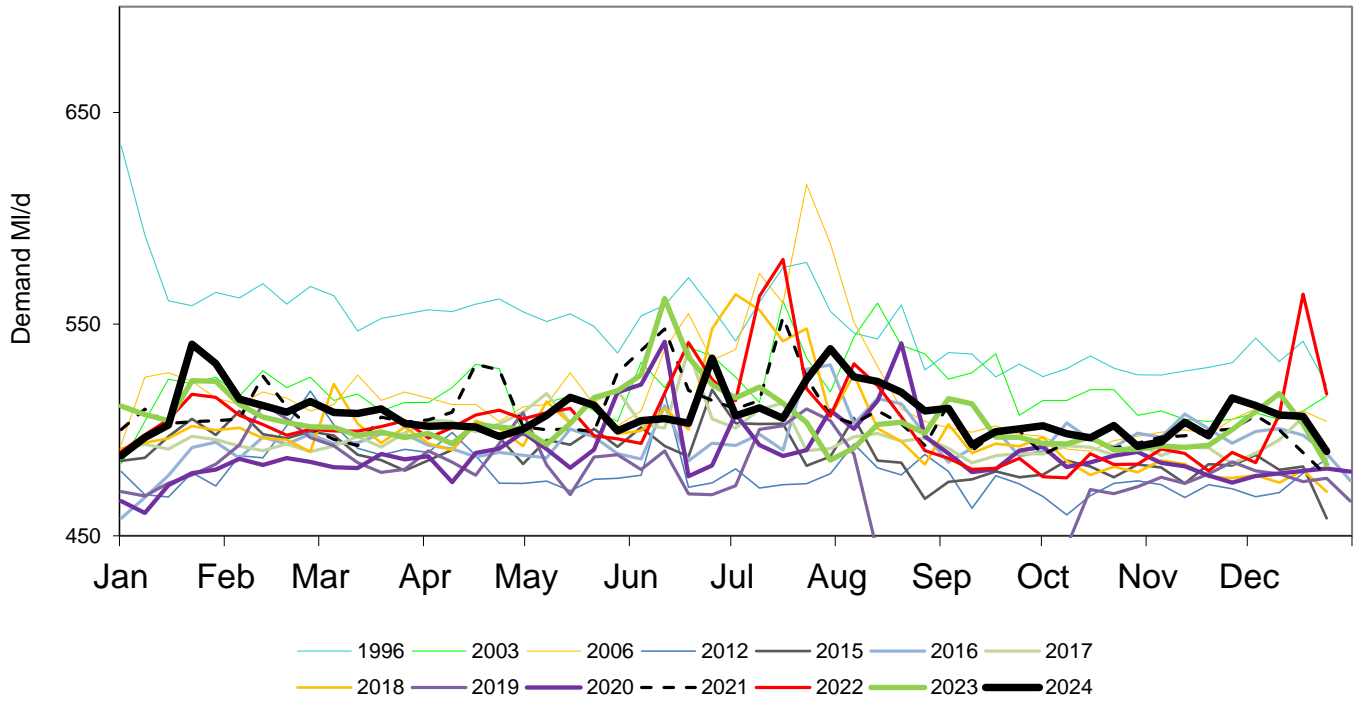
MONTHLY DEMANDS FROM WIS REPORT

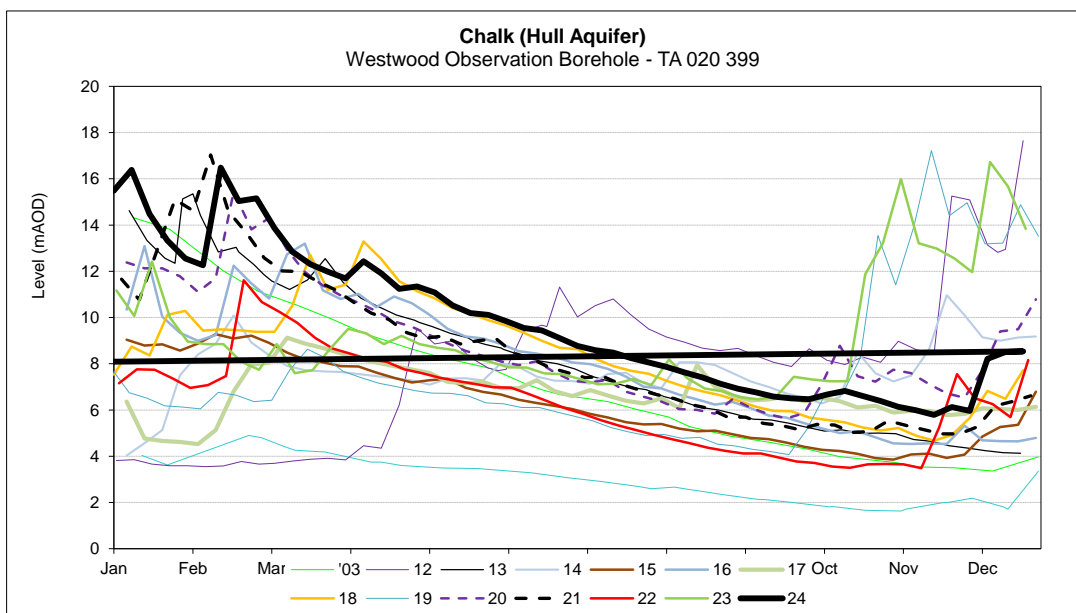
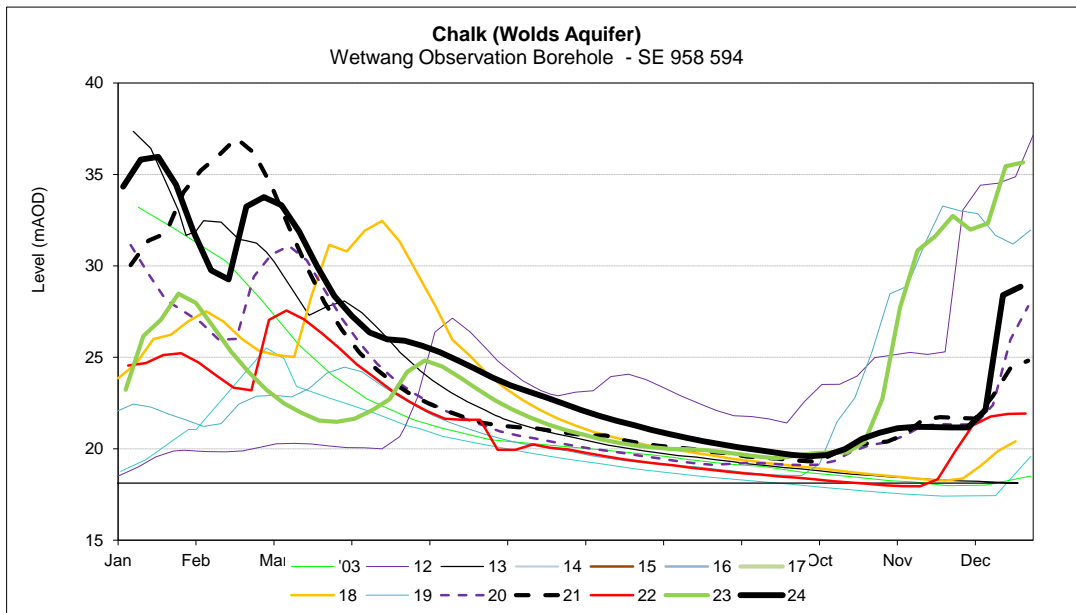
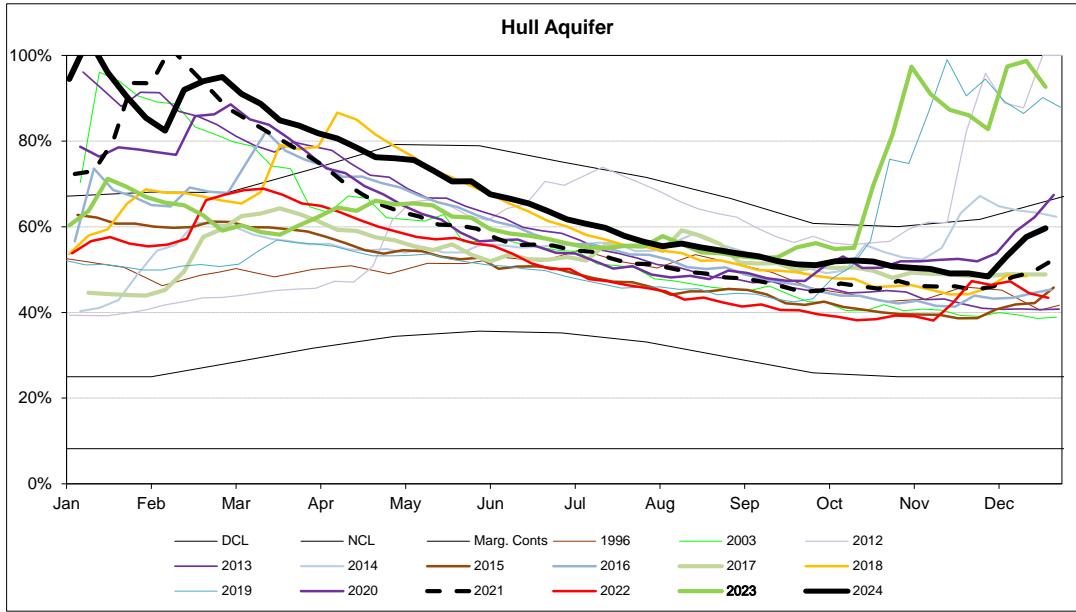
Sep-24	160	64	41	71	157	52	280	70	138	148	36	46	1263
Oct-24	162	57	40	71	156	51	285	69	139	147	36	47	1260

NB Current month demands include some estimates for minor sources and are not exactly comparable with previous months' figures.

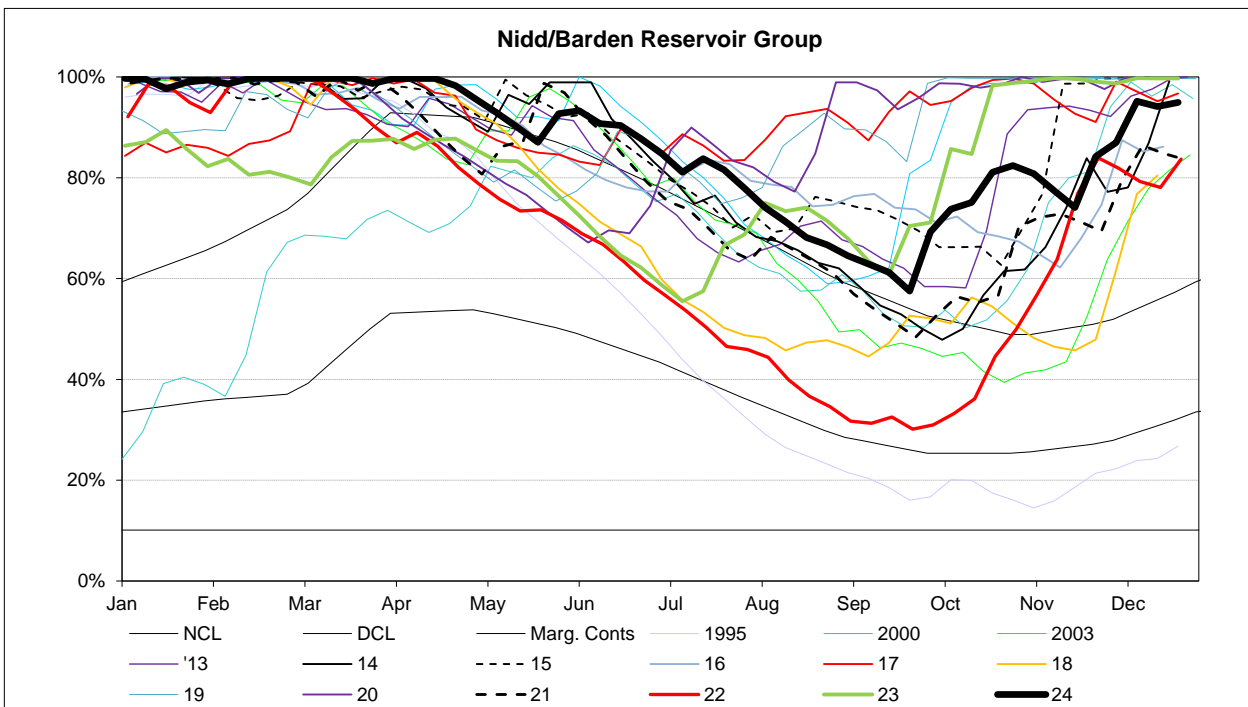
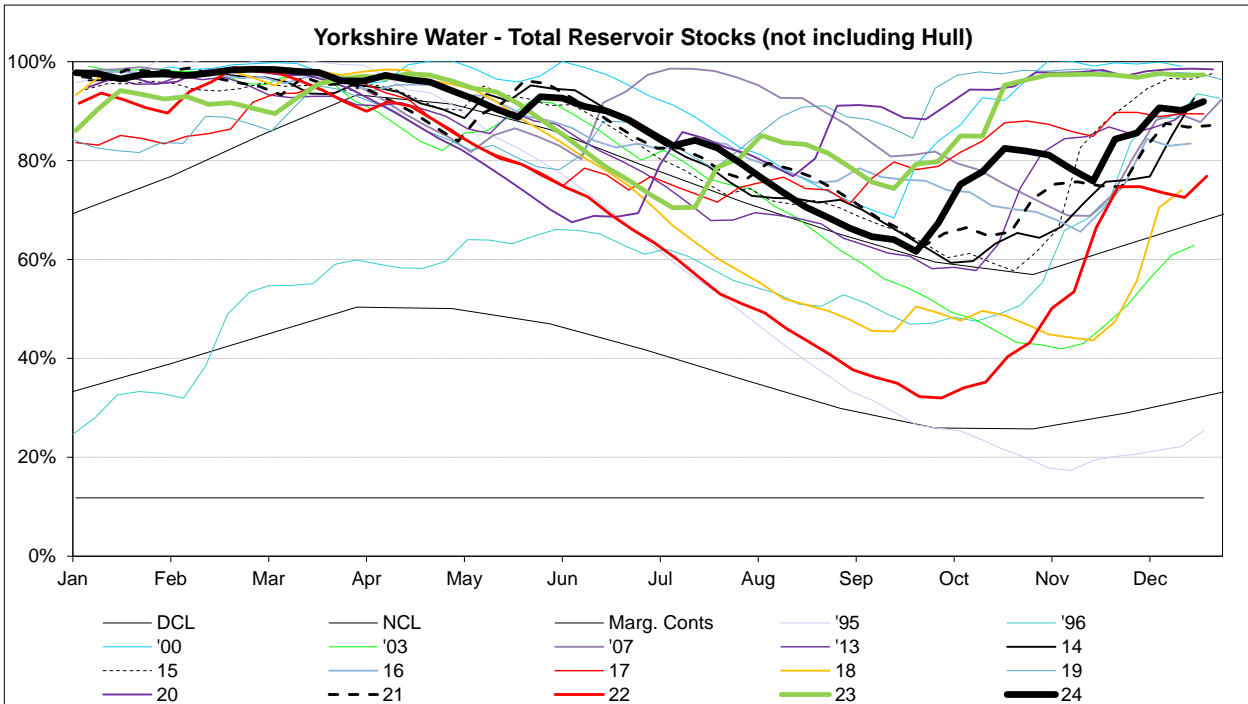


East Area Demand

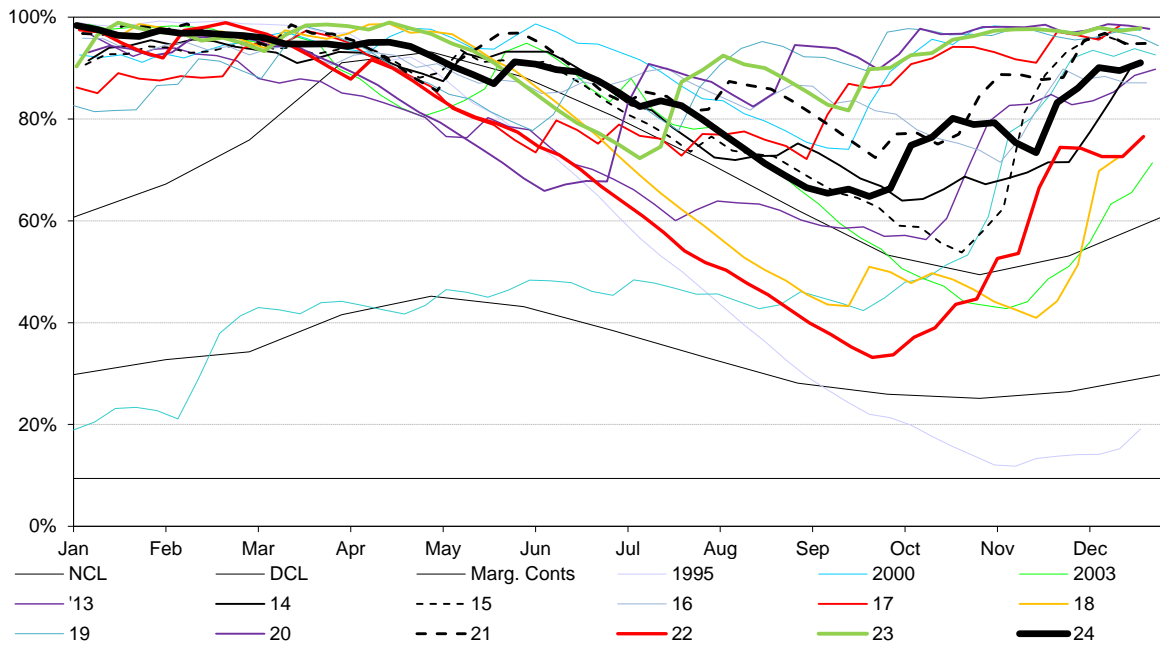




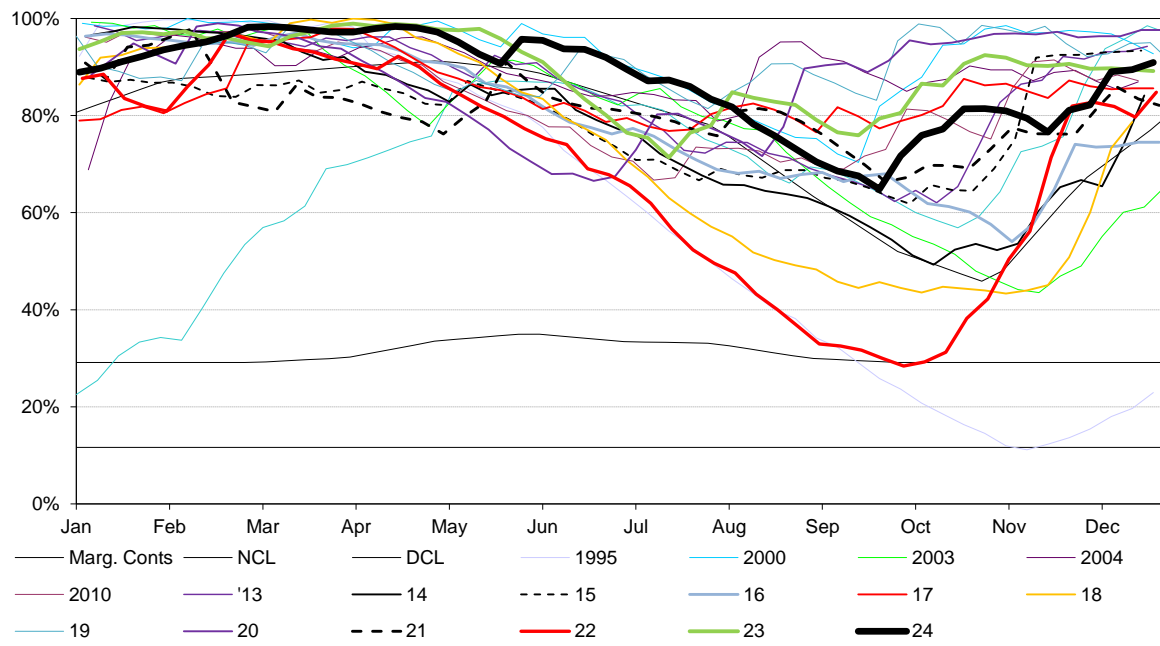
RESERVOIR STOCKS	27/01/2025		% Change	Planned Reservoir Safety Work Reason for Drawdown	Required Drawdown & Duration				
Reservoir Group	% Stocks @	% Change	last week						
Calderdale (excl Withens Clough)	99.7%	0.5%	1.3%	Leakage Investigation Access for Tunnel Grouting at Middle IRE Increase Drawdown Capacity Increase Drawdown Capacity	Aug 24 - Dec 24 Apr 24 - Oct 24 May 25 - June 25 June 25 - Aug 25	82.0% 28.0% 21.0% 10.0%			
Boothwood/Ryburn (incl WC)	97.2%	-0.9%	0.9%						
(Gorpley)	76.7%	4.1%	0.2%						
Huddersfield	95.0%	-2.8%	3.6%						
Brownhill/Digley	99.2%	-0.3%	-0.5%						
Riding Wood	100.0%	0.0%	0.0%						
Walshaw Dean Lower	100.0%	1.4%	12.7%						
Widdop	100.0%	0.0%	2.1%						
Brownhill	100.0%	0.0%	2.1%						
Longwood Comp IRE	N/A	N/A	N/A						
Longwood ESR	N/A	N/A	N/A	Embankment Stability Works Repair Ground Anchor Seepage Investigation Pointing Embankment Stability Works	Jan 23 - Dec 24 Aug 24 - Mar 25 Oct 24 - Dec 24 Nov 24 - May 25 Jan 23 - Dec 24	86.0% 87.6% 34.0% 78.0% 86.0%			
Grimwith	80.0%	4.2%	-2.4%						
Calder Area Total	97.4%	-1.1%	1.6%						
Nidd/Barden/Chelker	99.8%	1.4%	1.0%						
Grimwith	100.0%	2.6%	2.5%						
Worth Valley	99.9%	0.9%	2.3%						
Chelker	94.9%	1.6%	0.2%						
March Ghyll	83.4%	-4.4%	13.7%						
Keighley Moor	99.2%	5.1%	19.6%						
Hewenden	100.0%	0.0%	0.0%				Outlet Channel Repairs Bridge Repairs Inspection of Overflow and Upstream Face	Dates tbc Dates tbc Aug 24 - Mar 25	93.0% TBC 83.0%
Chelker	97.0%	8.6%	-5.1%						
Leighton/Roundhill	100.0%	5.8%	-0.1%						
North West Area Total	99.9%	1.9%	1.8%						
Washburn/Eccup Resrs.	96.9%	-0.9%	-0.7%						
Thornton Steward	92.1%	0.0%	2.5%						
Leighton/Roundhill	100.0%	0.0%	0.0%						
North Area Total	85.7%	4.6%	-0.9%						
Thruscross	100.0%	0.0%	0.0%	Damage to Overflow Channel Damage to Overflow Channel Install Overflow Debris Barrier Overflow Investigation	Nov 23 - Oct 25 Nov 23 - Oct 25 June 24 - Feb 25 Apr 25 -Sept 25	98.0% 89.0% 95.0% 95.0%			
Cod Beck	100.0%	0.0%	0.0%						
Randy Mere	N/A	N/A	N/A						
Ewden Valley	98.2%	12.7%	-3.3%						
North Area Total	97.2%	-0.6%	0.9%						
Redmires	78.3%	4.4%	-2.3%						
Don Valley & Winscar	95.6%	0.6%	3.4%						
Rivelin Valley	100.0%	0.0%	0.0%						
Little Don	100.0%	0.6%	0.3%						
Ewden Valley	100.0%	0.0%	0.0%						
Redmires	91.3%	-0.9%	2.6%						
Redmires Upper	91.7%	0.0%	0.0%						
Redmires Middle	83.5%	-3.1%	9.4%						
Strines	100.0%	0.0%	0.0%						
Regional Total (DCP)	81.0%	6.6%	-2.3%						
Hull Aquifer									
Tophill Low	82.7%	6.8%	-3.2%						
Hull Aquifer									



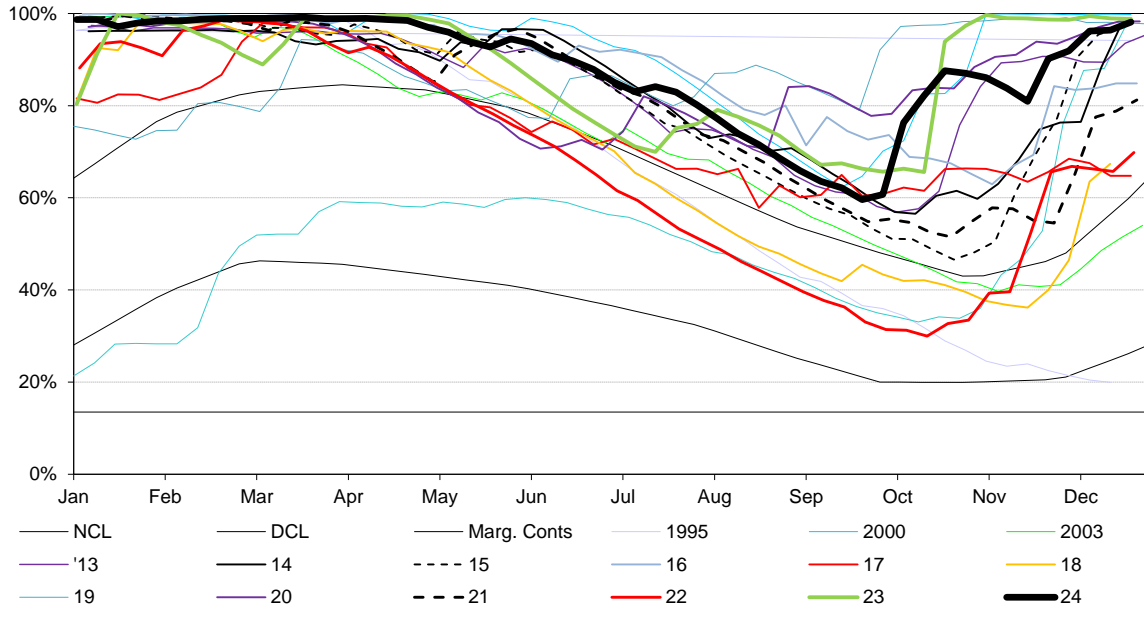
Calder Reservoirs



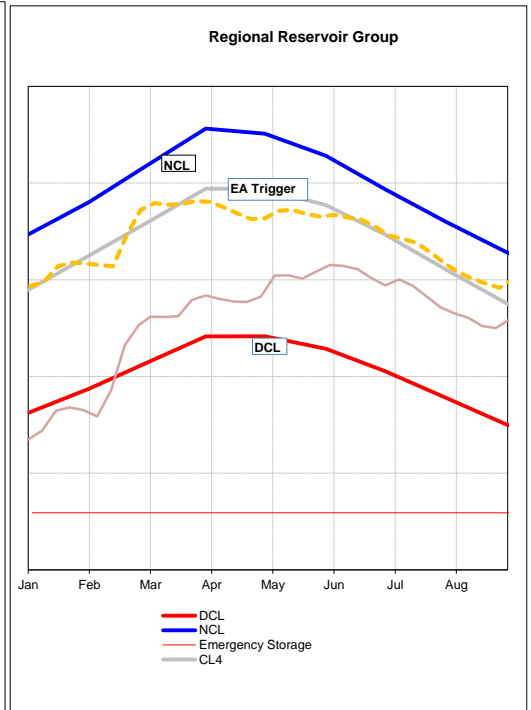
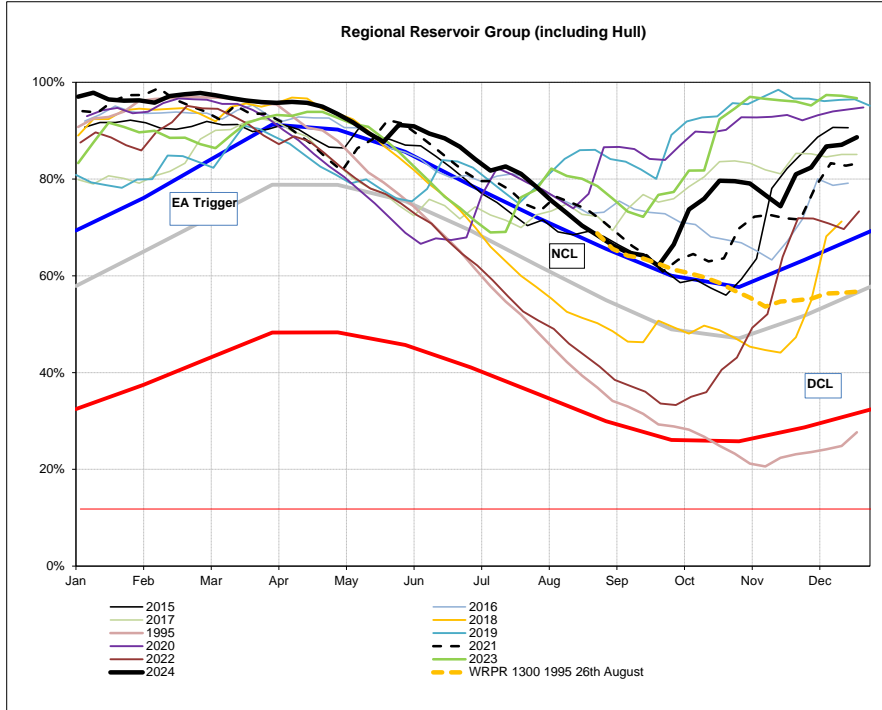
Washburn Reservoir Group inc Eccup



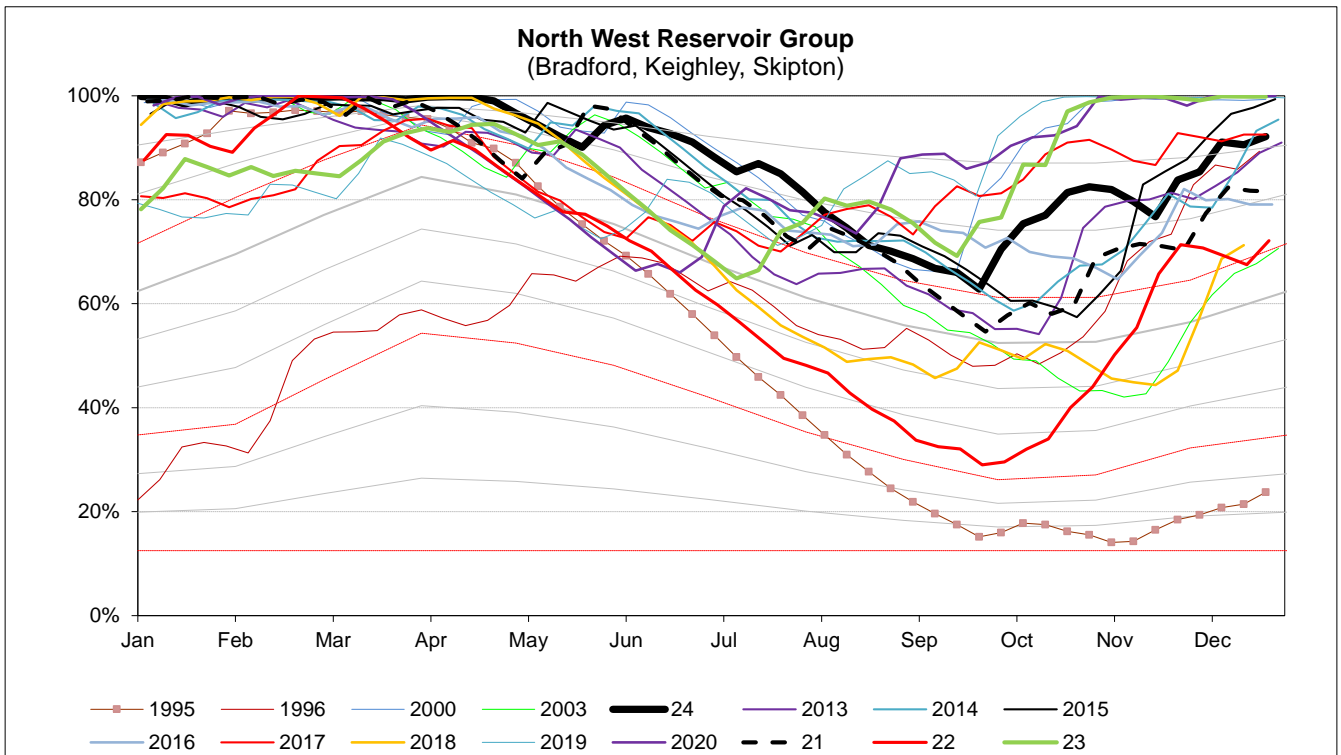
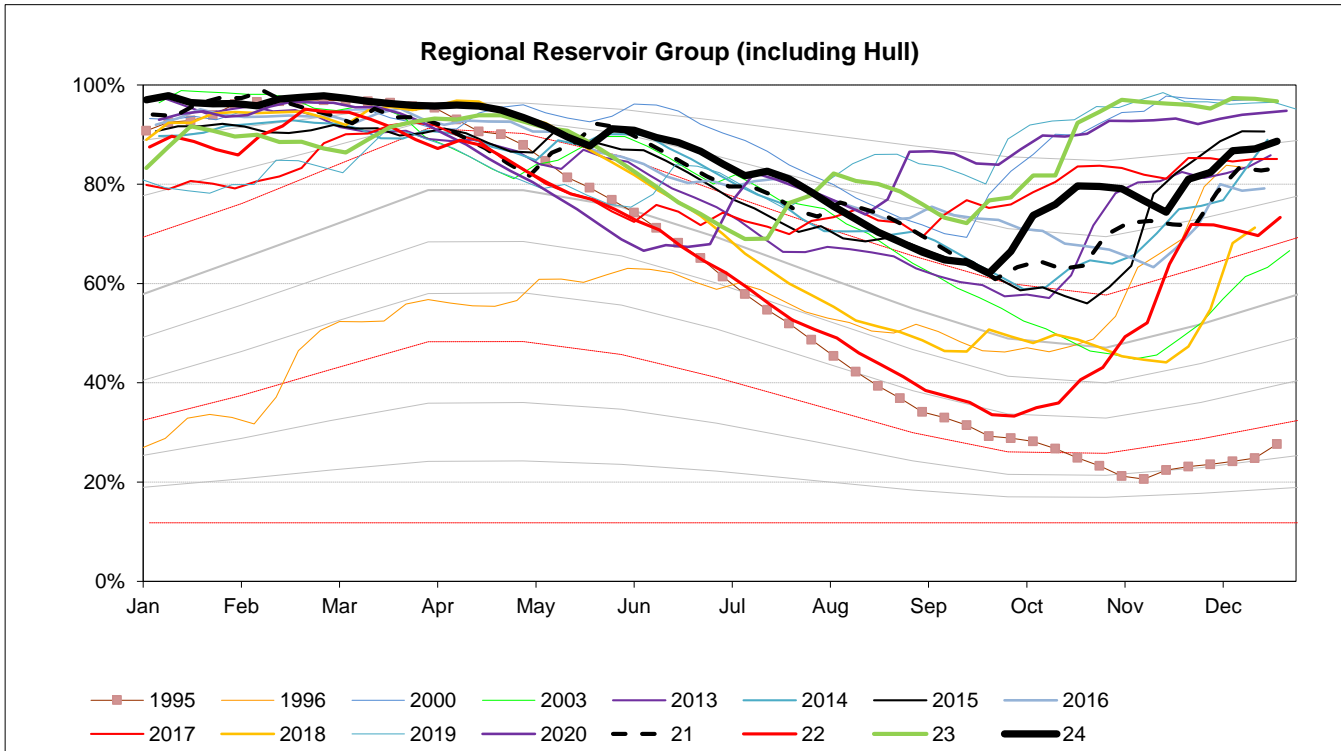
Sheffield & Barnsley Reservoirs

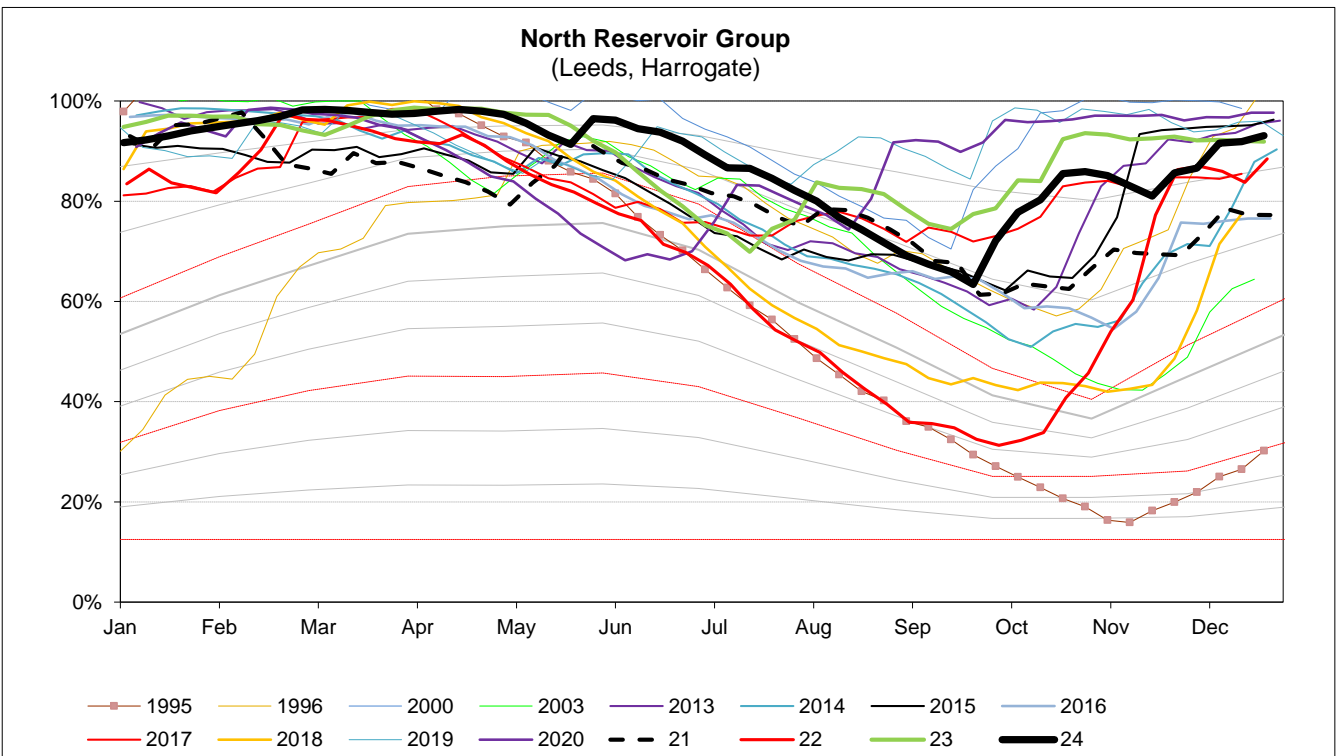
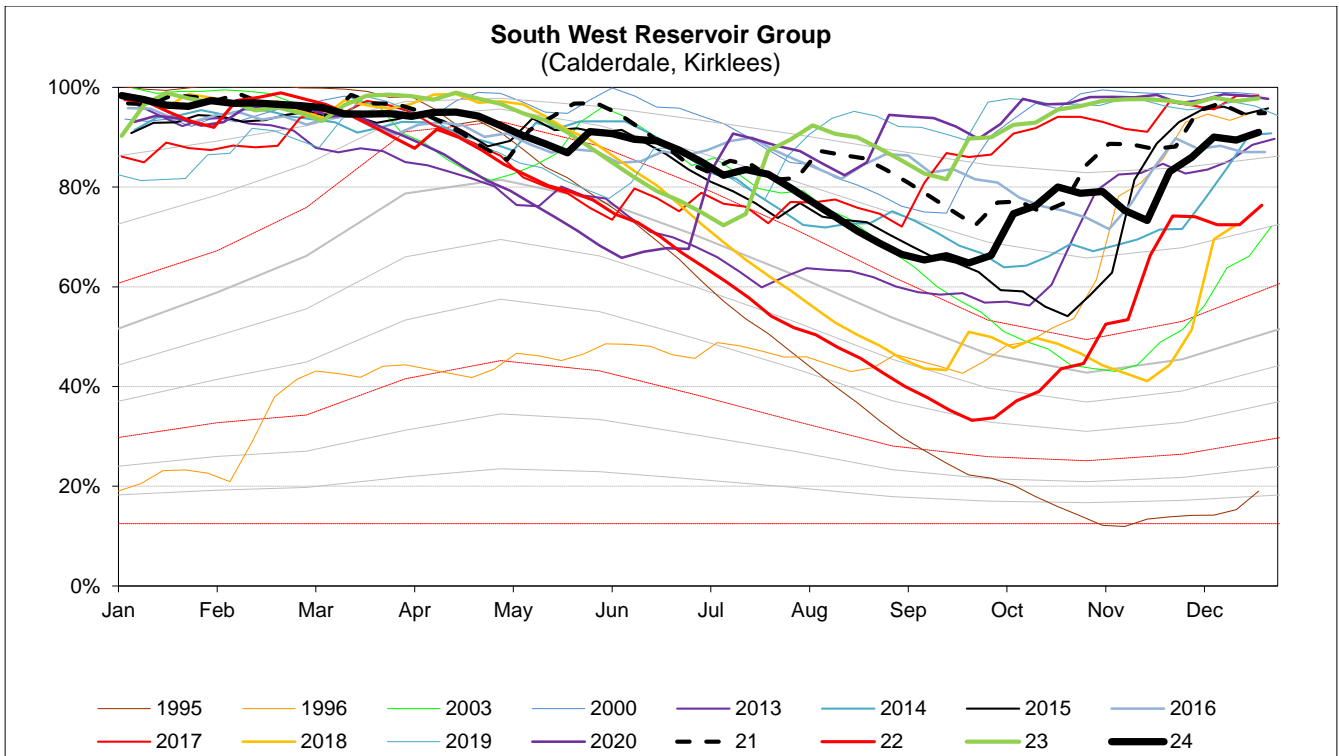


EA Stocks Report	27/01/2025						
	MI	%	% change		MI	%	% change
South West Area Supply Reservoirs				South Area Supply Reservoirs			
Calderdale Group	11106	99.7%	0.5%	Don Valley	2043	98.2%	-1.1%
Huddersfield Group	13402	94.9%	-2.9%	Little Don	7369	100.0%	0.6%
Brownhill/Digley excl Holmestyes	5567	99.1%	-0.3%	Ewden Valley	4937	100.0%	0.0%
Boothwood/Ryburn	11338	96.9%	-1.2%	Loxley Valley	6874	100.0%	0.0%
				Rivelin	815	100.0%	0.0%
South West Reservoir Group	42880	97.4%	-1.1%	Redmires	2537	91.3%	-0.9%
Bradford Area Supply Reservoirs				South Reservoir Group	24577	98.9%	0.0%
Gouthwaite	5811	100.0%	11.0%	Winscar Group	8916	95%	0.9%
Grimwith	21764	100.0%	2.6%				
Nidd/Barden/Chelker	19148	99.8%	1.4%	Compensation Reservoirs			
Rombalds/Thornton Group	2230	99.9%	1.4%	Scout Dike	694	100.0%	0.0%
				Underbank	2867	100.0%	0.0%
Skipton Area Supply Reservoirs				Morehall	2173	100.0%	0.0%
Embsay	723	100.0%	0.0%	Damflask	5106	100.0%	0.0%
Worth Valley Group	3309	99.9%	0.9%				
North West Reservoir Group	47174	99.9%	1.9%	North Area Supply Reservoirs			
				Washburn	22649	96.9%	-0.9%
Compensation inc Silsden	2350	99.9%	-0.1%	Eccup	6287	89.7%	-2.9%
Gouthwaite	5811	100.0%	11.0%	Leighton/Roundhill	7401	100.0%	0.0%
March Ghyll & Elslack Reservoirs excluded for consistency with stocks predictions in WRAPSIM				Haverah Park	1002	100.0%	0.0%
				Lumley Moor	381	100.0%	0.0%
				Thornton Steward	874	92.1%	0.0%
East Area Supply Reservoirs							
Tophill Low	1392	82.7%	6.8%	North Reservoir Group	32307	97.2%	-0.6%
Hull Aquifer	14330	75.4%	-2.2%	Lindley Wood Compensation	2920	100.0%	0.0%
East Reservoir Group	15722	76.0%	-1.5%	Regional Reservoir Group	171576	95.6%	0.0%
				(sum of South West, North West, East, South, North & Winscar Reservoirs)			

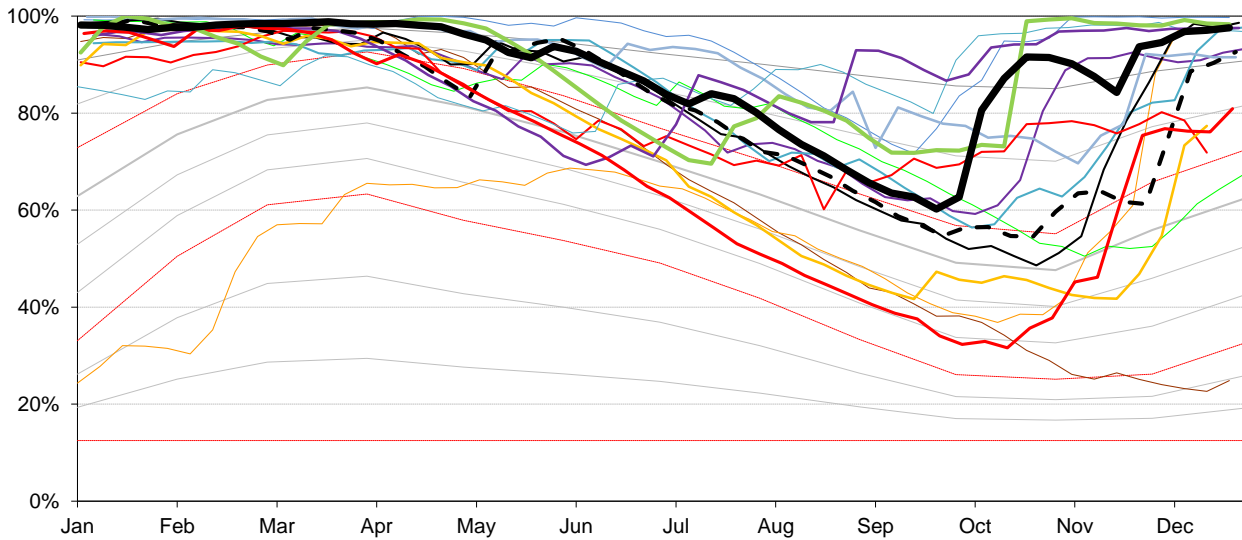


Triggers	
EA early warning (CL4)	Water resources to advise EA on production
Hosepipe Restrictions	When projected falling stocks fall below DCL
Drought Orders	When stocks are below DCL.



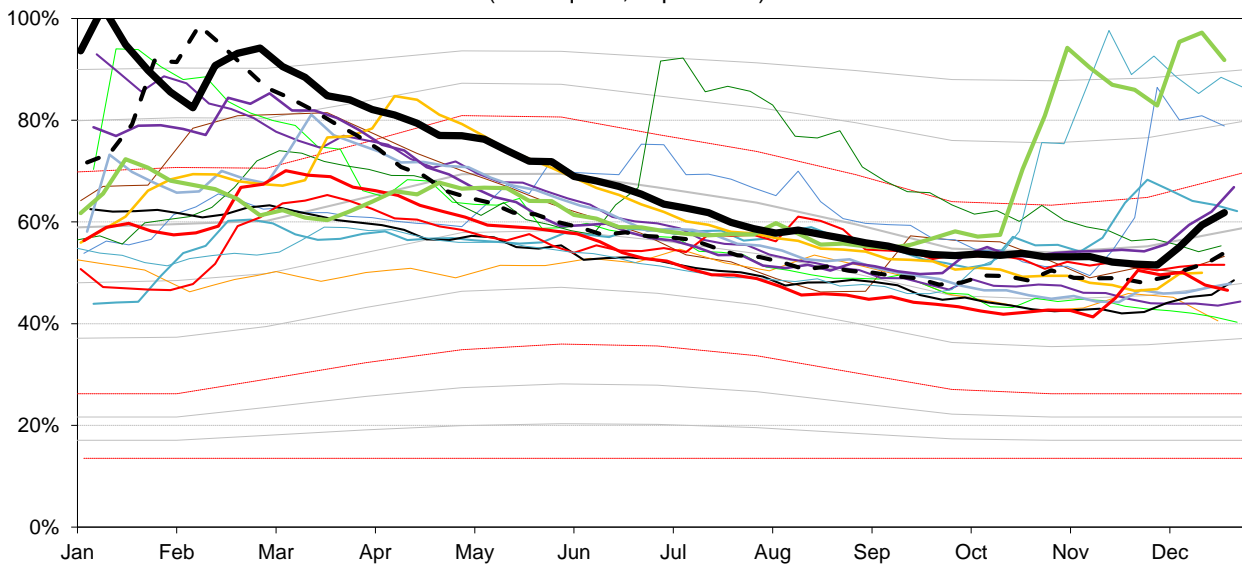


South Reservoir Group
(Sheffield, Barnsley)



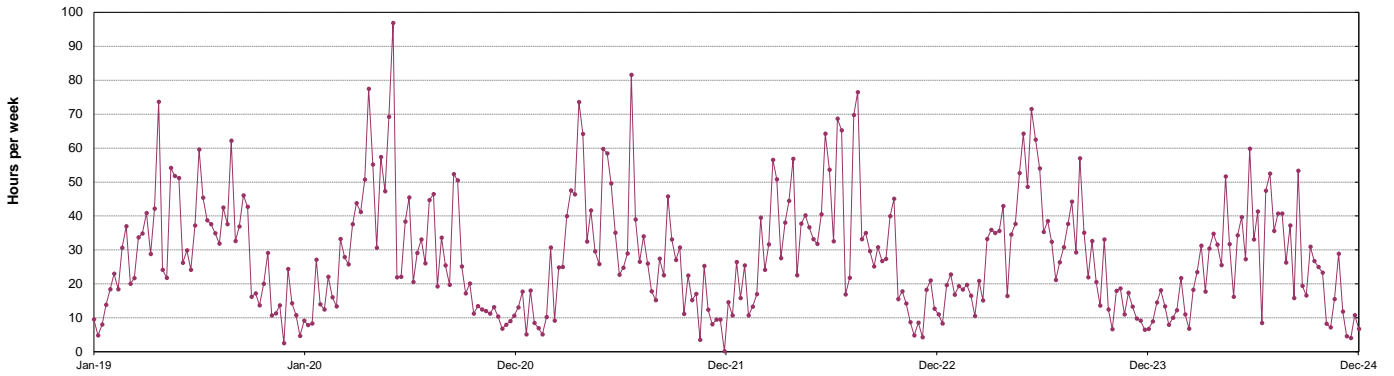
— 1995 — 1996 — 2000 — 2003 — 2013 — 2014 — 2015 — 2016
 — 2017 — 2018 — 2019 — 2020 - - 21 — 22 — 23 — 24

East Reservoir Group
(Hull Aquifer, Tophill Low)

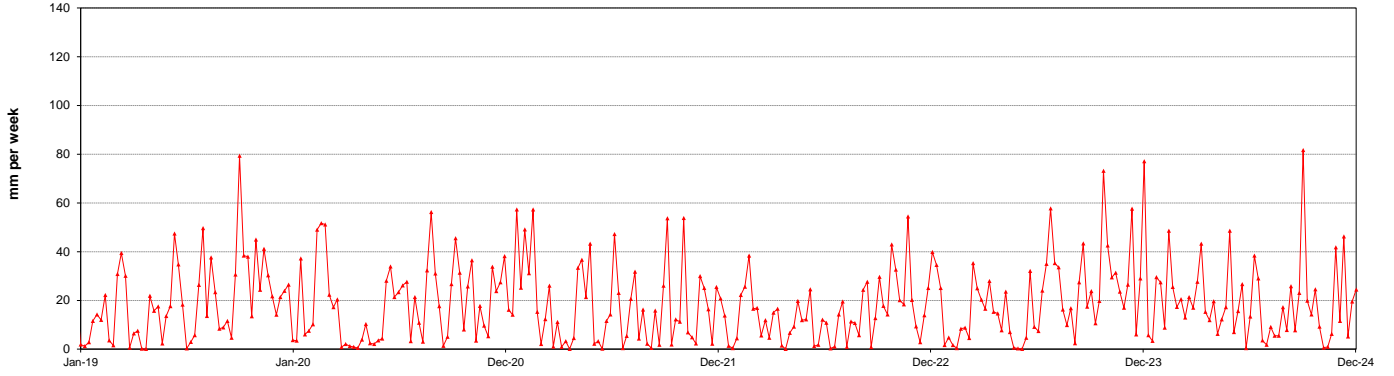


— 1995 — 1996 — 2000 — 2003 — 2013 — 2014 — 2015 — 2016
 — 2017 — 2018 — 2019 — 2020 - - 21 — 22 — 23 — 24

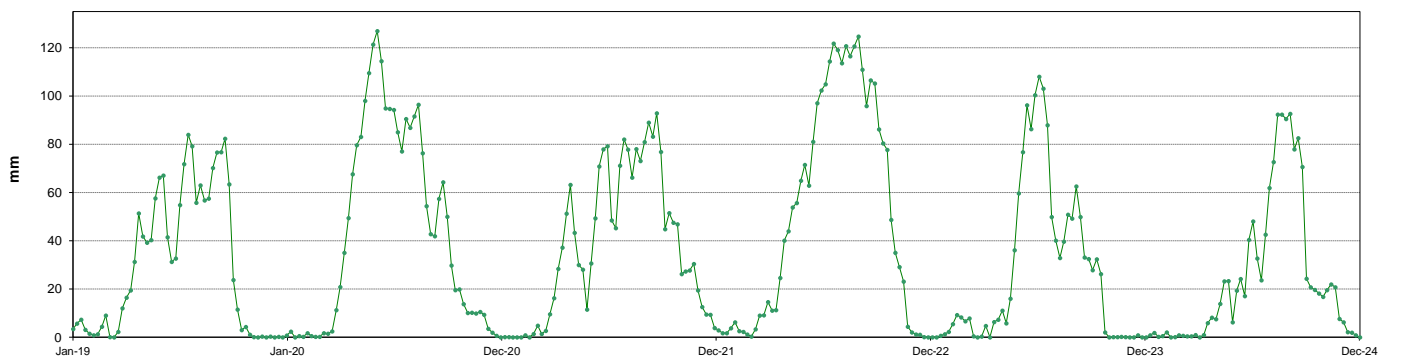
Average Sunshine



Average Rainfall



Soil Moisture Deficit



This page will normally be updated monthly (approx mid month).

This data may be subject to change following routine validation checks.

Where showing a negative value, this is normal at certain sources, due to the imports of water into that source being greater than the volumes abstracted.

Annual licences run from April to March.

Units in Ml

Serial No	Source	Reporting Year	October	Year to date Ml	Run date	
					Annual Limit	% of Annual Limit
02/27/023/332	Ainderby Steeple Boreholes	C	124	1253	1760	71%
03/28/083/010	Armthorpe Boreholes	C	227	2230	3319	67%
03/28/083/012	Austerfield Boreholes	C	395	3696	11615	32%
02/27/022/020	Aysgarth & Newbiggin Springs	C	16	149	341	44%
02/27/012/035	Baitings, Ryburn & Blackhouse reservoirs	C	196	3149	20457	15%
02/27/023/032	Bellerby Borehole and springs near Bellerby	F	65	210	1250	17%
02/27/022/209	Birk Gill & River Burn	C	913	3399	6400	53%
02/27/012/254	Boothwood Reservoir & associated catchwaters	C	347	3086	20457	15%
02/27/10/112	Boshaw Whams Reservoir	C	0	0	55	0%
03/28/083/105	Boston Park Boreholes	C	192	1875	3318	57%
02/27/024/305	Brayton Barff Boreholes	C	0	0	2250	0%
02/26/030/002	Bridlington	C	155	1594	2500	64%
02/27/005/031	Broomhead Reservoir	F	1103	6979	12410	56%
02/26/030/004	Burton Agnes	C	79	760	1000	76%
02/27/018/080	Carlton Hanger Lane Boreholes	C	340	2500	3500	71%
02/27/018/079	Carlton Mill Lane Boreholes	C	114	1522	3800	40%
02/27/019/009	Carr Bottom Reservoir, Burley Woodhead	C	20	45	409	11%
02/27/023/340	Catterick Boreholes	F	191	1378	2920	47%
02/27/027/136	Cayton Carr Lane Boreholes	C	55	1140	3928	29%
02/27/027/163	Cayton Station Road Borehole	C	148	906	2646	34%
02/27/019/137	Chelker Reservoir	C	210	2369	5000	47%
02/27/023/031	Coalsgarth Springs	C	7	77	750	10%
02/27/011/064	Colne Valley Catchwaters	F	-59	1908	5840	33%
02/26/032/126	Cottingham Well	C	698	6163	18184	34%
02/27/018/081	Cowick Boreholes	C	379	3697	5250	70%
02/27/023/046	Cranehow & Downholme Springs	C	0	0	318	0%
02/27/023/030	Crumma, Newsham & Gandale Springs	C	69	726	1364	53%
02/27/005/030	Dale Dyke & Agden Reservoirs	F	969	6250	12410	50%
02/27/012/261	Dean Head & Scammonden	F	-29	940	3650	26%
02/27/19/121	Dib Spring, Hawkswick	C	0	0	27	0%
02/26/032/126	Dunswell Well	C	509	7128	16593	43%
NE/27/025/021	East Ness Boreholes	F	275	1959	5680	34%
02/26/031/087	Elmswell Wold Borehole	C	0	170	1273	13%
02/27/015/045	Embsay Reservoir	C	46	1720	1846	93%
02/27/016/196	Esholt Sewage Treatment Works	C	0	0	88	0%
02/26/032/124	Etton Boreholes	C	131	1293	5100	25%
03/28/083/012	Finningley Boreholes	C	289	2993	6780	44%
02/27/022/328	Fossdale (High Shaw) Springs	C	9	82	227	36%
02/27/018/120	Goosehouse Boreholes	F	163	1993	3500	57%
02/27/012/043	Gorpley Reservoir	C	0	0	1823	0%
02/27/016/022	Graincliffe Reservoir	F	240	888	2728	33%
02/27/012/037	Green Withens Ringstone Res & catchwater	C	402	4164	20457	20%
02/27/019/051	Greenhow Tunnel (Nidd Aqueduct) Dale Head Intake	C	0	0	214	0%
02/27/019/052	Greenhow Tunnel (Nidd Aqueduct) No.2 Access Shaft	C	0	0	6819	0%
NE/27/019/005	Grimwith Reservoir to Nidd Aqueduct	F	5	686	3650	19%
02/26/030/003	Haisthorpe Boreholes	C	368	3701	5000	74%
03/28/083/012	Hatfield Boreholes	C	216	1508	3319	45%
03/28/083/100	Hatfield Woodhouse Boreholes	C	0	0	3320	0%
02/27/029/010	Hazel Head Springs	C	52	478	1162	41%
02/27/012/041	Hebden, Luddenden & Hebble Valley Resrs	F	969	6953	15695	44%
02/27/018/077	Heck Boreholes	C	0	358	2489	14%
03/28/083/012	Highfield Lane Boreholes	C	240	2721	11615	23%
02/27/023/685	Hollin Hill Borehole	F	0	17	45	37%
02/27/010/063	Holmestyes & Digley Reservoirs	F	259	1727	5840	30%
02/27/22/024	Horsehouse Spring, leyburn	C	0	0	33	0%
02/27/027/002	Howe Hill Well	F	82	558	1014	55%
02/26/031/006	Hutton Cranswick	C	44	430	796	54%
02/27/005/012	Ingbirchworth Reservoir & Annat Royd Intake	C	155	1061	3637	29%
02/27/005/202	Ingbirchworth South Borehole	F	4	30	132	23%
02/27/027/058	Irton	C	453	4488	8215	55%
02/27/21/015	John O'Gaunts and Beaverdyke Reservoirs	C	0	0	1909	0%
02/27/014/010	Keighley Moor Reservoir	F	13	282	6951	4%
02/27/025/128	Keld Head Boreholes	C	171	1657	3319	50%
02/26/032/126	Keldgate Boreholes	C	4	988	5819	17%
02/26/031/002	Kilham	C	2	96	1818	5%
02/27/005/032	Langsett Reservoir	F	785	7031	17155	41%
02/27/022/210	Leighton Reservoir & Spruce Gill stream intake	C	-205	5452	13184	41%
03/28/083/107	Littleworth Borehole	C	0	0	1659	0%
02/27/028/270	Loftsome Bridge ASR Borehole No.1	C	0	0	750	0%
02/27/014/009	Lower Laithe Reservoir	F	141	1304	6951	19%
02/27/005/011	Midhope Reservoir & Knoll Brook Intake	F	287	1994	17155	12%
02/26/034/006	North Newbald	C	0	0	1137	0%
03/28/083/012	Nutwell Boreholes	C	167	2309	4983	46%
02/27/019/006	Panorama, Hilltop & Old Reservoirs & Springs	C	27	205	1000	20%
02/27/018/078	Pollington Boreholes	C	214	1987	5000	40%
02/27/014/058	Ponden Reservoir	F	138	850	6951	12%
02/27/016/023	Reva Reservoir, Hawkesworth	C	-38	886	1364	65%
02/27/005/029	Rivelin and Redmires Reservoirs	F	468	1654	8030	21%
02/27/028/017	River Derwent at Elvington	F	4222	30565	75000	41%

02/27/028/083	River Derwent at Loftsome Bridge	F	1992	14425	30400	47%
02/27/029/012	River Esk	C	262	2684	7823	34%
02/26/031/047	River Hull & West Beck	C	1513	12485	25000	50%
02/26/032/194	River Hull for Sewer Cleaning	C	0	0	91	0%
02/27/024/078	River Ouse at Acomb	F	845	5734	35000	16%
02/27/024/158	River Ouse at Moor Monkton	C	2731	25115	73000	34%
02/27/022/214	River Ure at Kilgram Bridge	C	519	3086	15000	21%
02/27/020/196	River Wharfe at Arthington	F	9	326	19009	2%
02/27/019/129	River Wharfe at Lobwood	F	1619	13770	27392	50%
03/28/083/012	Rossington Bridge Boreholes	C	0	0	5172	0%
02/27/022/027	Roundhill and Lumley Moor Reservoirs	C	0	5	3500	0%
02/27/005/013	Royd Moor Reservoir & Intakes	C	101	966	2955	33%
02/27/021/016	Scargill Reservoir	C	71	849	1932	44%
02/27/021/092	Scarhouse & Angram Resvrs with tunnel & catchwater	C	3166	31757	38164	83%
02/27/15/149	Silsden Beck, Stilling-Basin at foot of Silsden Reservoir Emb	C	0	0	10	0%
02/26/032/126	Springhead Well	C	802	8168	13638	60%
02/27/022/021	Stalling Busk & Marsett Springs	C	0	0	33	0%
02/27/022/208	Stock Beck, Carlesmoor Beck & River Laver	C	830	1843	3500	53%
02/27/023/684	Stubbing Nook Borehole	F	0	13	135	10%
03/28/083/012	Thornham Boreholes	C	303	2979	6213	48%
02/27/016/160	Thornton Moor & Stubden Reservoirs	C	297	1297	6214	21%
02/27/012/038	Turvin Clough	C	189	346	4014	9%
02/27/019/054	Upper & Lower Barden Reservoirs	C	387	4322	14223	30%
02/27/020/088	Washburn Valley Reservoirs	C	2707	26338	43800	60%
02/27/015/041	Watersheddles Reservoir	F	175	767	6951	11%
02/27/016/021	Weecher Reservoir	C	17	110	909	12%
02/27/011/065	Wessenden Valley, Blackmoorfoot & Deerhill	F	913	4871	12410	39%
02/27/023/034	West Stonesdale (Garland Hill) Springs	C	0	0	282	0%
02/27/015/042	Whinney Gill & Jenny Gill Reservoirs	C	0	4	377	1%
02/27/005/026	Winscar, U & L Windleden, Harden & Snailsden	F	727	5267	10140	52%
02/27/012/036	Withens Clough Resr & Catchwater	C	139	1706	3319	51%
02/27/010/011	Yateholme, Riding Wood, Ramsden & Brownhill	F	288	1746	6820	26%

Licences with Aggregated Annual Quantities	Reporting Year	October	Year to date MI	Annual Limit	% of Annual Limit
Baitings, Ryburn, Boothwood, Green Withens	C	945	10399	20457	51%
Langsett, Midhope	F	1072	9025	17155	53%
Worth Valley	F	467	3203	6951	46%
River Derwent (Elvington, Loftsome)	F	6214	44990	94841	47%
Causton, Irton	C	655	6533	10700	61%
Selby Boreholes	C/F	1210	12057	25283	48%
Doncaster Wellfield	C	2029	20312	30295	67%
Doncaster Sub Group	C	1610	16207	26049	62%
Austerfield & Highfield Lane	C	635	6418	9956	64%
Hull Groundwater Sources	C	2012	22446	32850	68%

Third Party Agreements (Calendar Year)	Reporting Year	October	Year to date MI	Annual Limit	% of Annual Limit
CRT, Hudds Narrow Canal	C	112	1139	1273	89%
Severn Trent Ladybower Reservoir	C	1559	17479	21550	81%

	Reporting Year	Year to date MI	Annual Limit	% of Annual Limit
Winscar To Langsett Transfer Usage	F	1269	2482	51%