

1. Rainfall

The Yorkshire Region Has Received 120.5% of LTA for January

2. Reservoirs (surface water supply reservoirs not including Hull)

Over the Past Week Our Reservoir Stocks Have Increased By 0.19% To 98.2%

3. Rivers

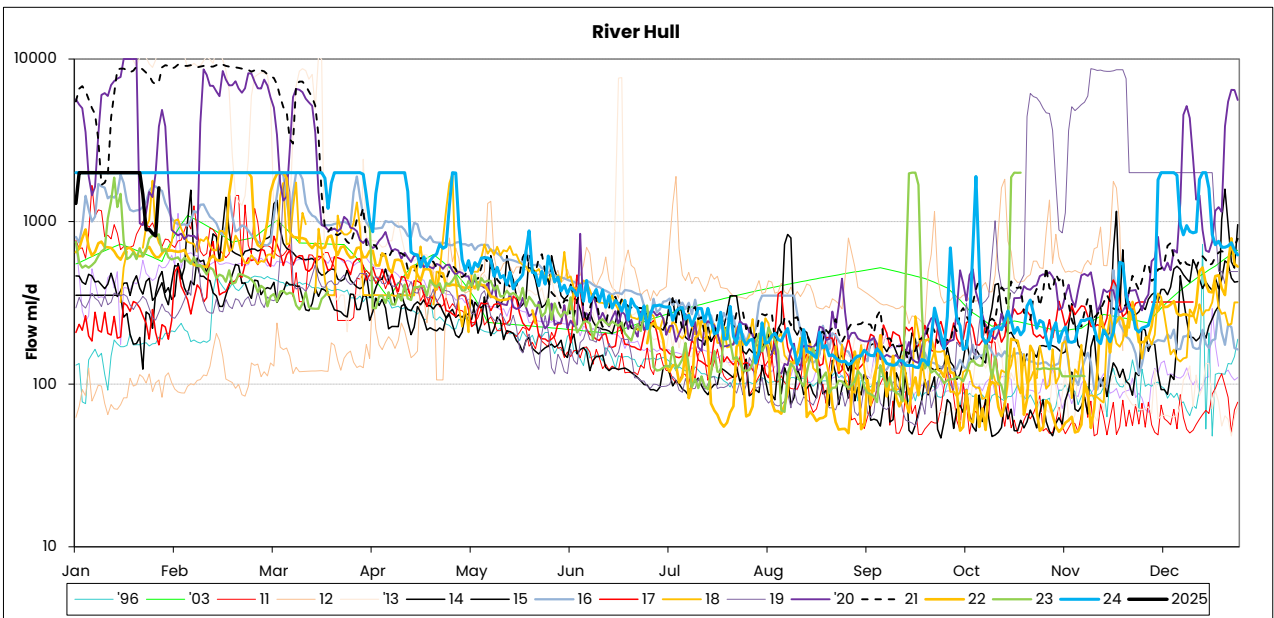
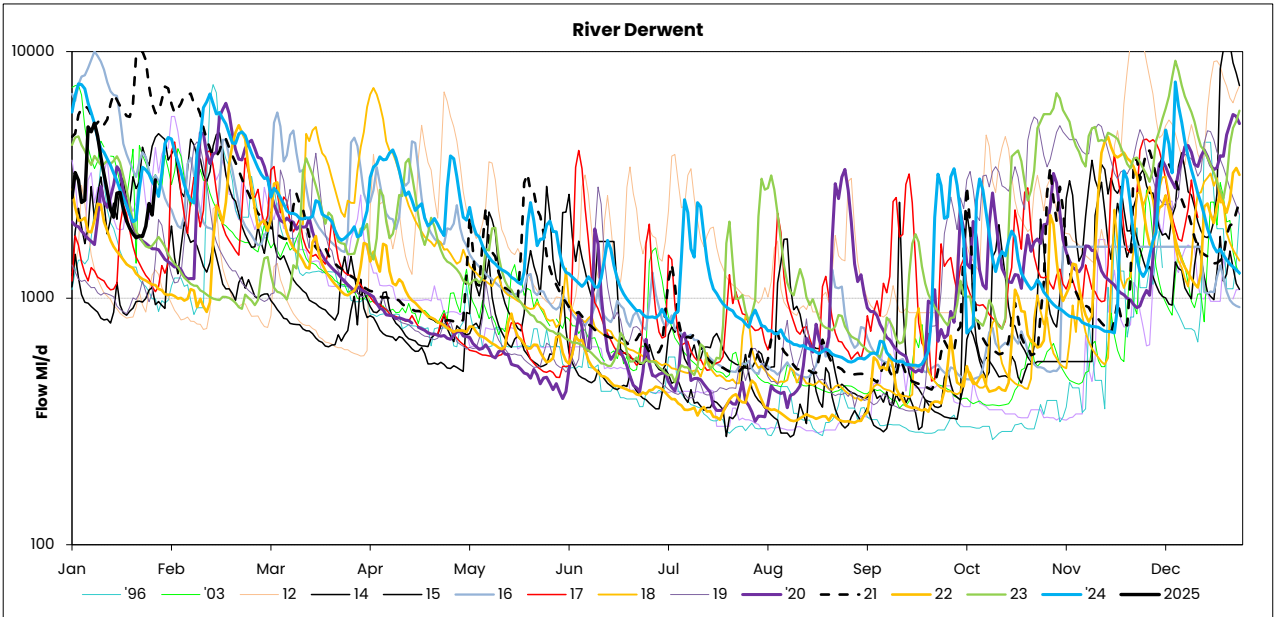
All of Our Rivers are Above Critical Levels

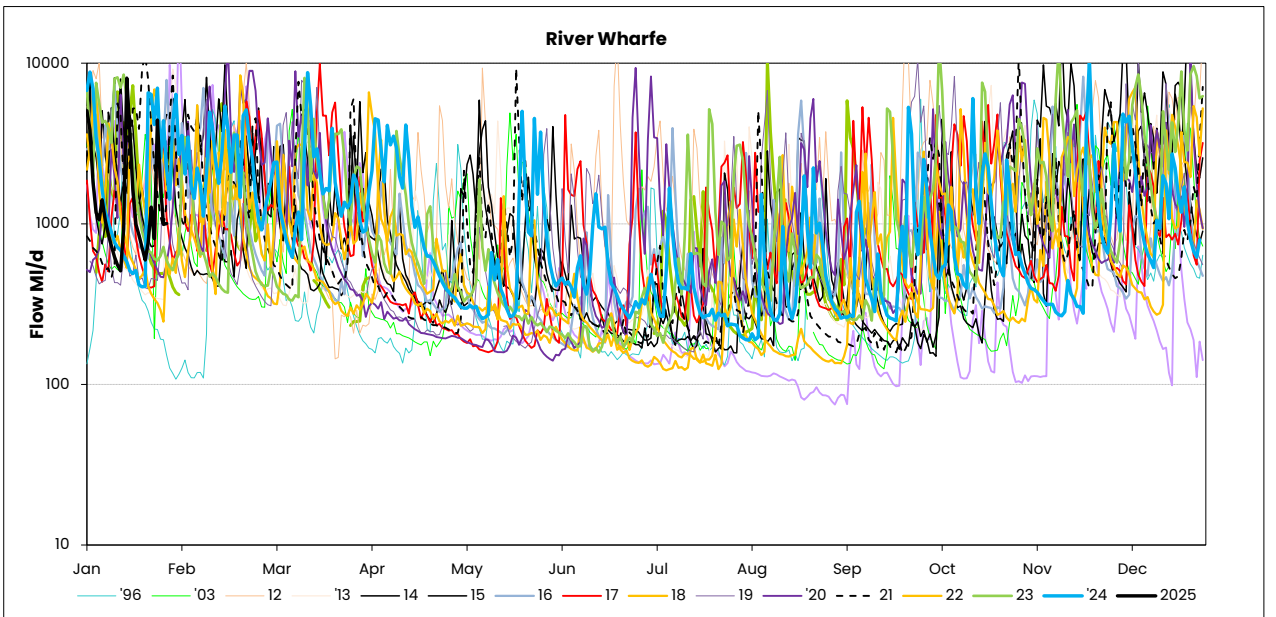
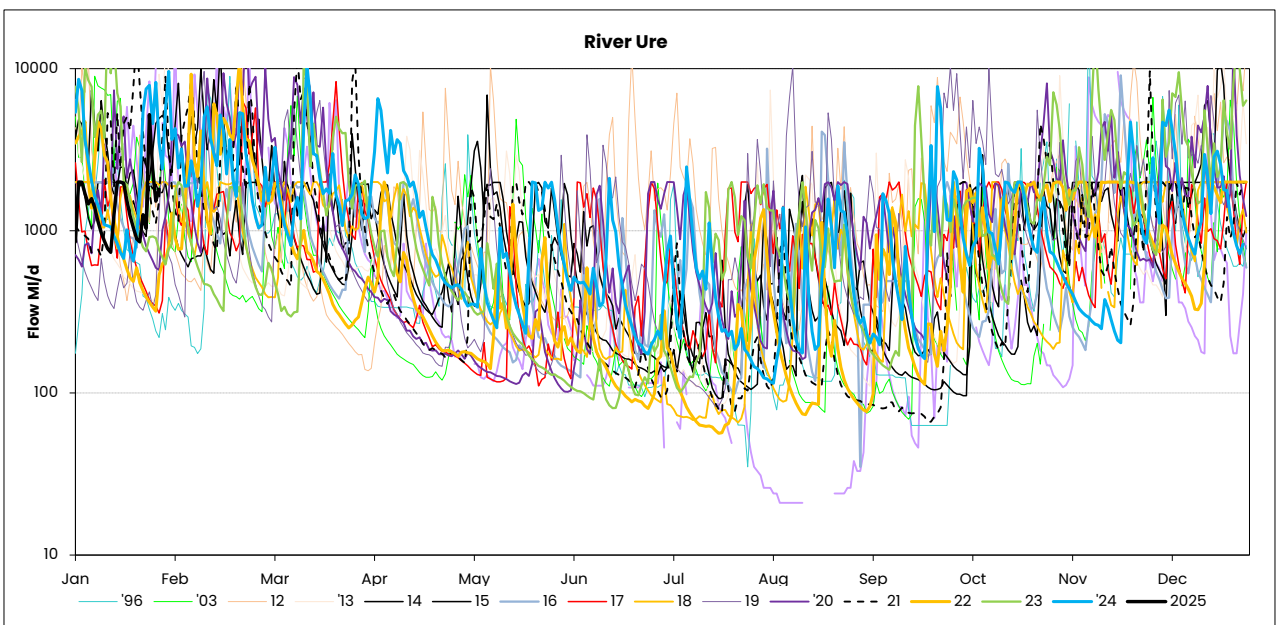
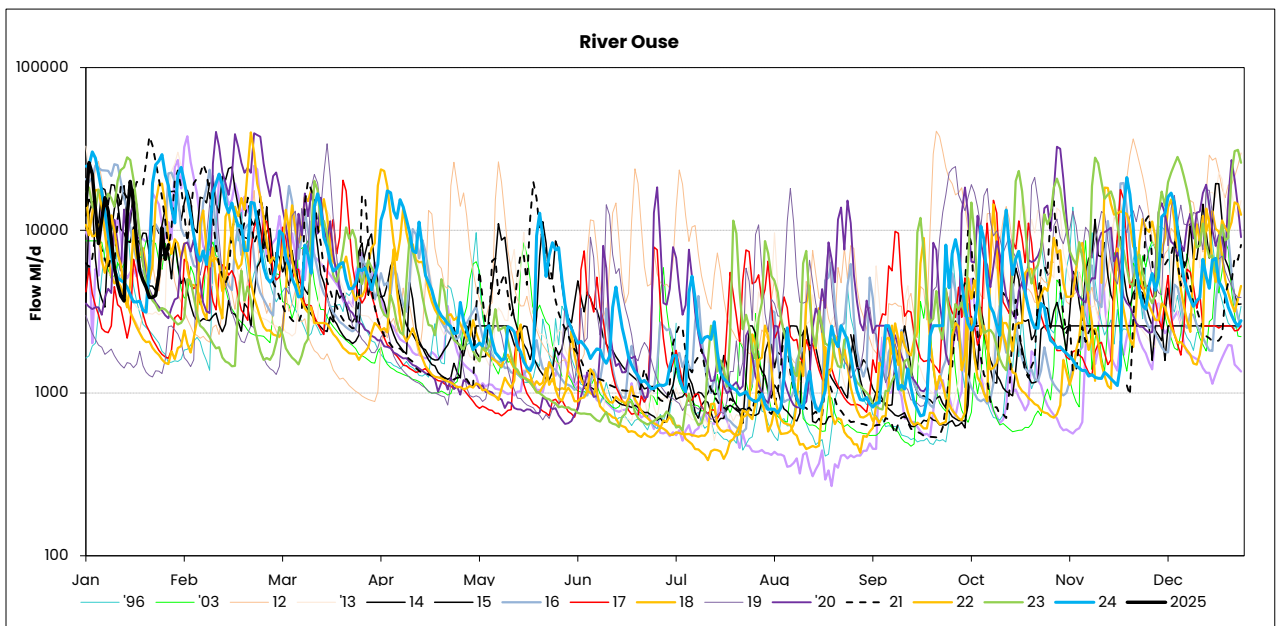
4. Demand

Regional Demand = 1429.6 MI/d (including York)

5. Comments

	Mon 27-Jan	Mon 20-Jan	Mon 13-Jan	Mon 06-Jan	Critical flow bands
Derwent	✓ 3018	✓ 1822	✓ 2286	✓ 4948	305
Hull (using gauged (residual flows) only from 2	✓ 1617	✓ 2000	✓ 2000	✓ 2000	45 / 159 / 227
Ouse	✓ 8163	✓ 4466	✓ 3678	✓ 11752	400 / 650 / 1000
Ure	✓ 1806	✓ 892	✓ 1262	✓ 1579	50 / 163 / 300
Wharfe	✓ 1005	✓ 595	✓ 925	✓ 1410	252 / 389 / 488 / 580





Yorkshire Region (Met Office)				England/Wales	
Month	mm	LTA	LTA(%)	mm	LTA(%)
June	48	72	67%	36	52%
July	74	69	108%	80	113%
August	30	77	39%	54	68%
September	118	71	167%	136	183%
October	72	84	86%	96	97%
November	51	89	57%	84	82%
December	108	90	120%	97	93%

SOURCE OF DATA : Hydrological Summary of Gt Britain, Institute of Hydrology

Yorkshire Water Services Data			
Rainfall Station	Total January	LTA January	LTA % January
Tophill	48.6	56	87%
Cottingham	52.1	55	95%
Bridlington	39.2	61	64%
Roundhill	155.2	112	139%
Fewston	101.6	90	113%
Osmotherley	90.5	68	133%
Scar House	165.1	147	112%
Watersheddles	119.7	140	85%
Gt Walden Edge	190.1	129	147%
Walshaw Dean	191.4	142	135%
Blackmoorfoot	156.2	120	130%
Ramsden	232.3	158	147%
Redmires	116.0	111	105%
Langsett	152.9	114	134%
YORKSHIRE REGION	129.3	107.4	120%
EAST REGION	57.6	60.0	96%
PENNINE (WEST)	151.9	121.0	126%

NDA= No data available/lack of readings, impacts % LTA for the month

SOURCE OF DATA : YWS RAIN GAUGES- weekly, so monthly data may include previous month or miss start of month

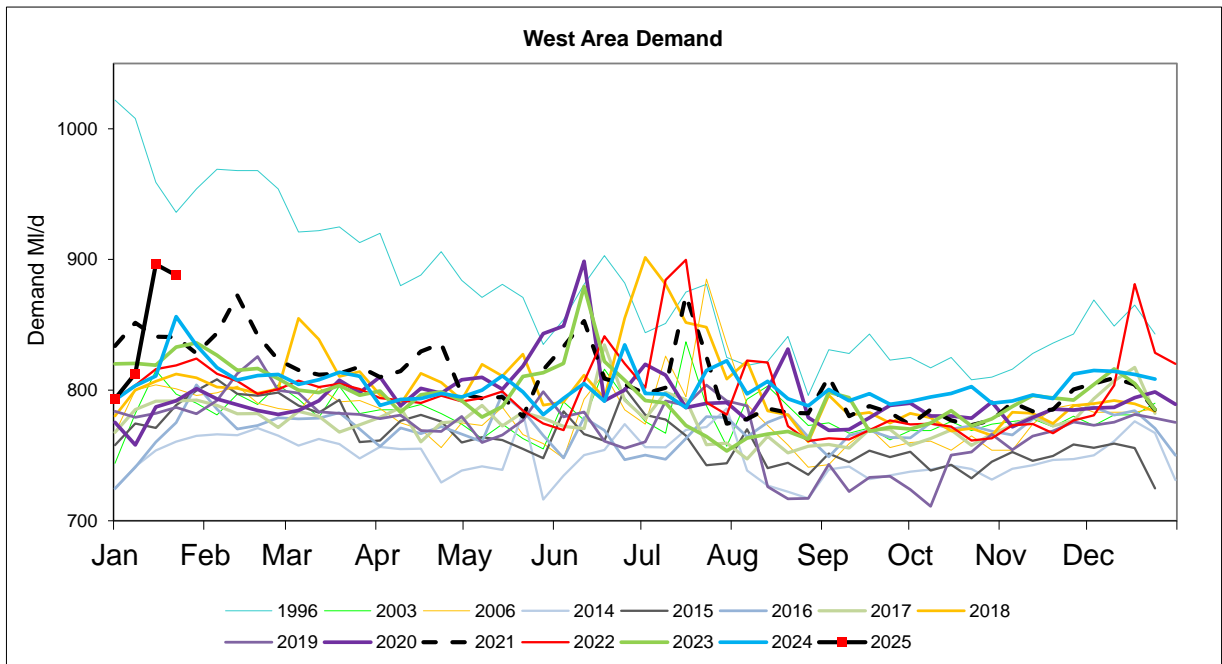
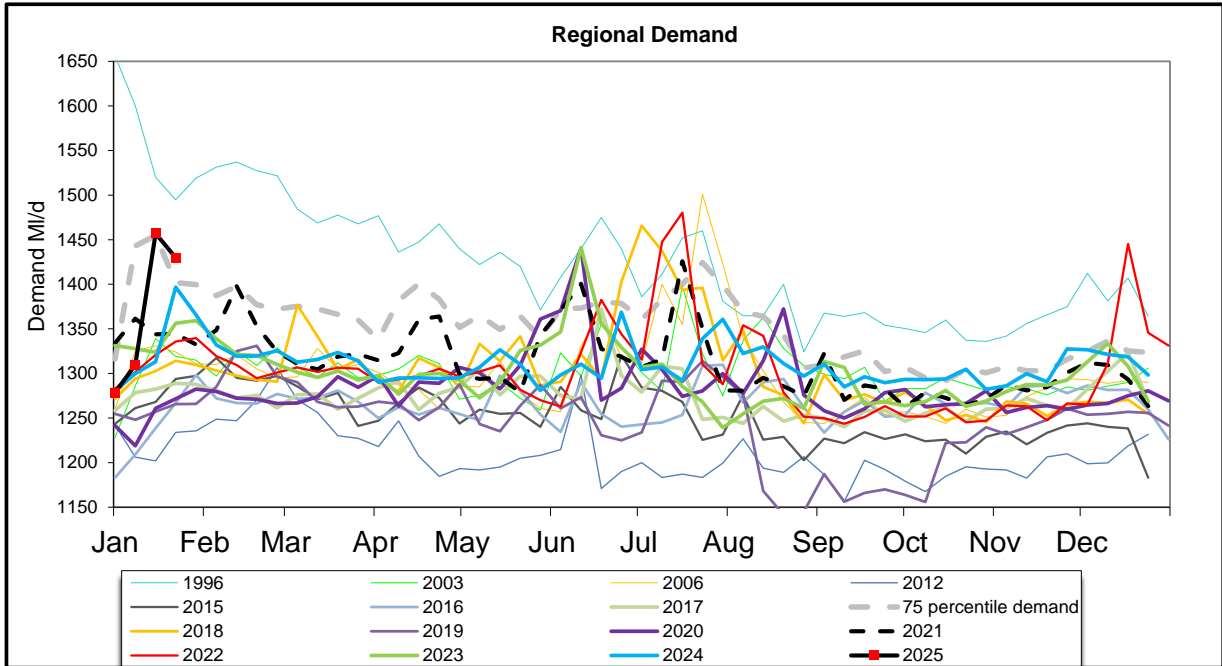
Daily Average Demand MI/d

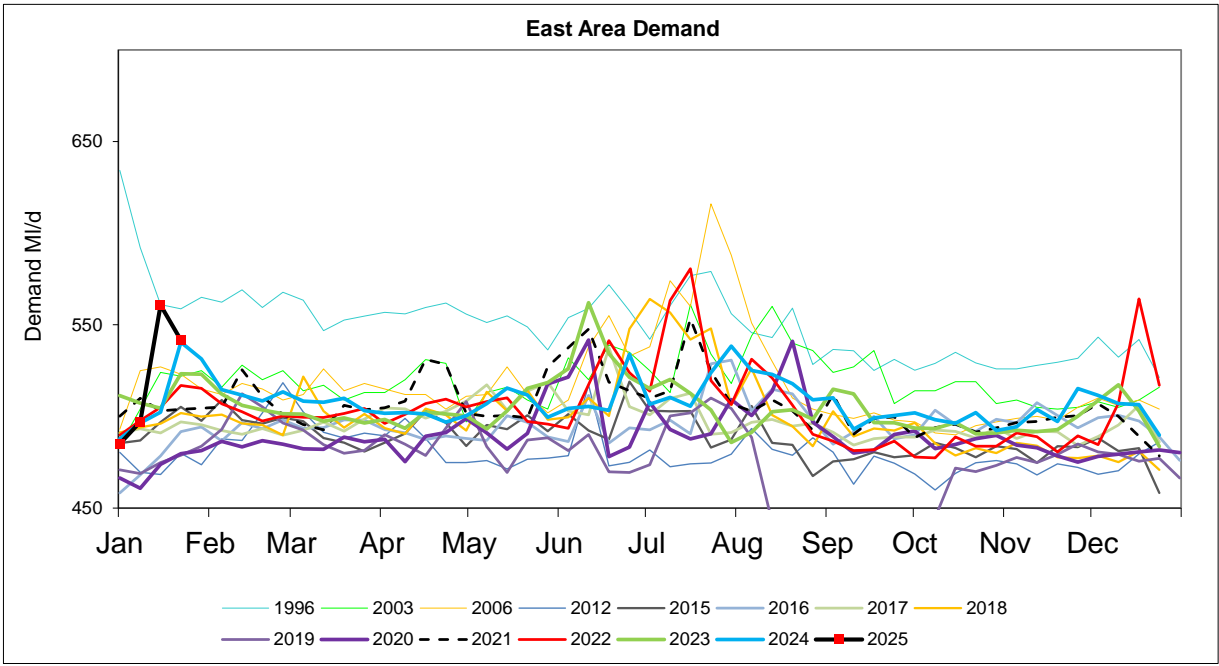
Week Ending Wednesday	L E E S D S	W A K E F I L D	M O R B Y	H A R O G A T E	H U L L	M A L T O N	S H E F F / B L Y	D O N C A S T E R	B R A D F O R D	C A L D E R	S K I P T O N	Y O R K A	R E G I O N
25/12/2024	165	76	40	75	156	51	274	80	147	153	38	43	1298
01/01/2025	161	75	39	73	154	52	273	80	140	149	37	45	1279
08/01/2025	167	77	40	74	155	53	277	81	147	152	39	48	1310
15/01/2025	189	84	48	86	167	57	302	89	167	163	44	62	1457
22/01/2025	184	87	46	84	164	56	296	88	163	166	43	53	1430

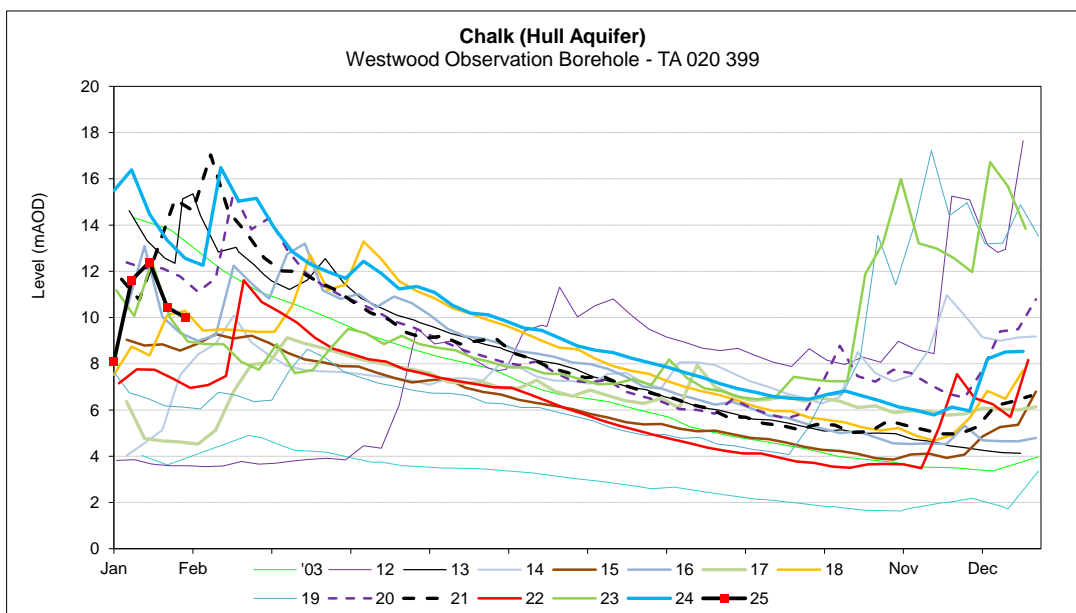
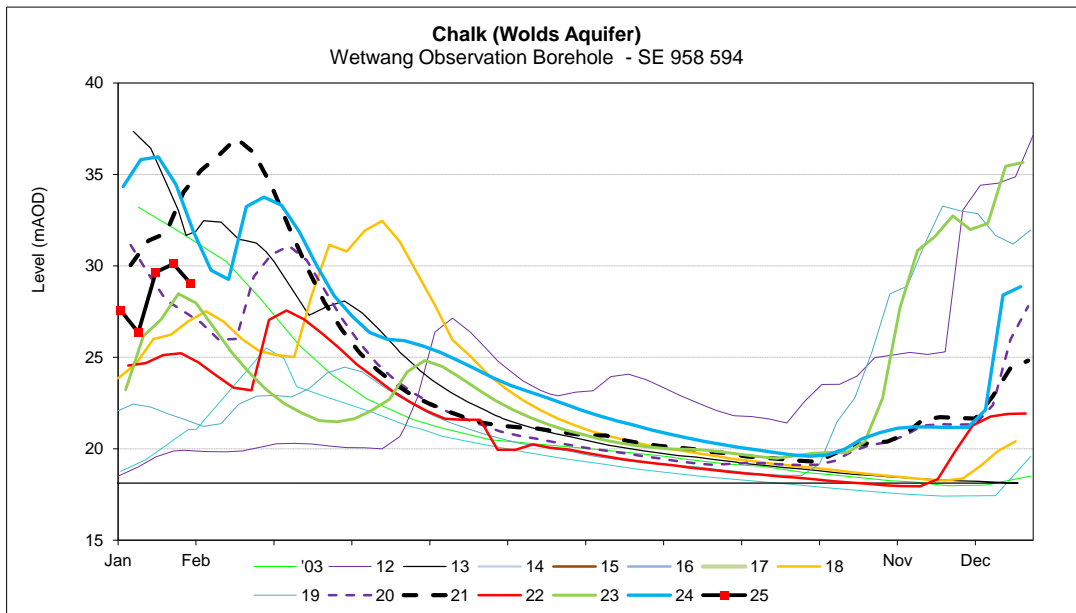
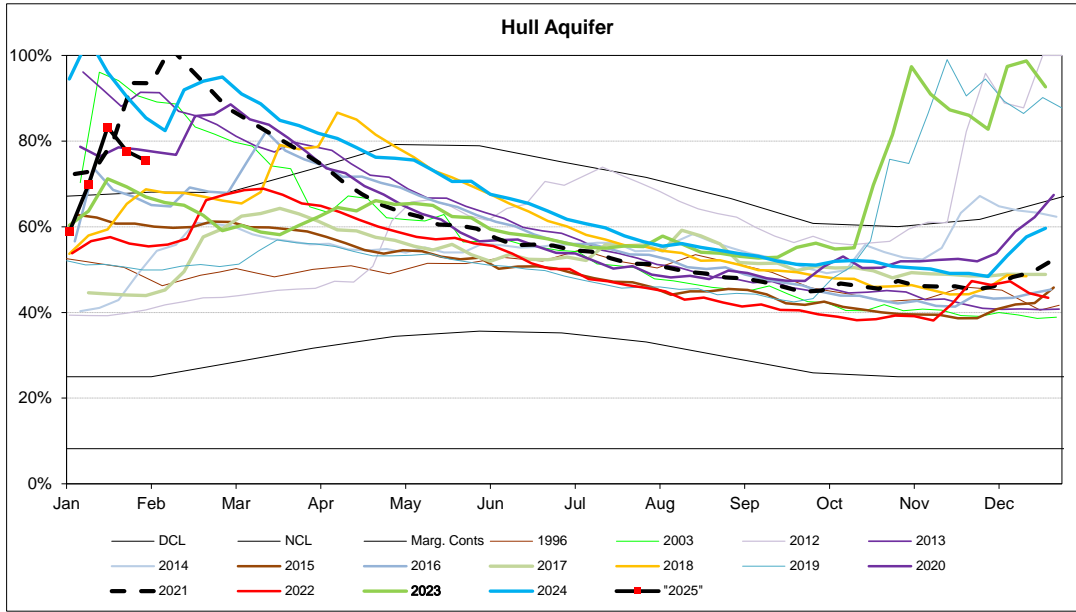
MONTHLY DEMANDS FROM WIS REPORT

Nov-24	166	54	40	70	155	51	273	72	138	148	36	50	1252
Dec-24	163	69	40	70	154	51	279	73	147	149	36	48	1280

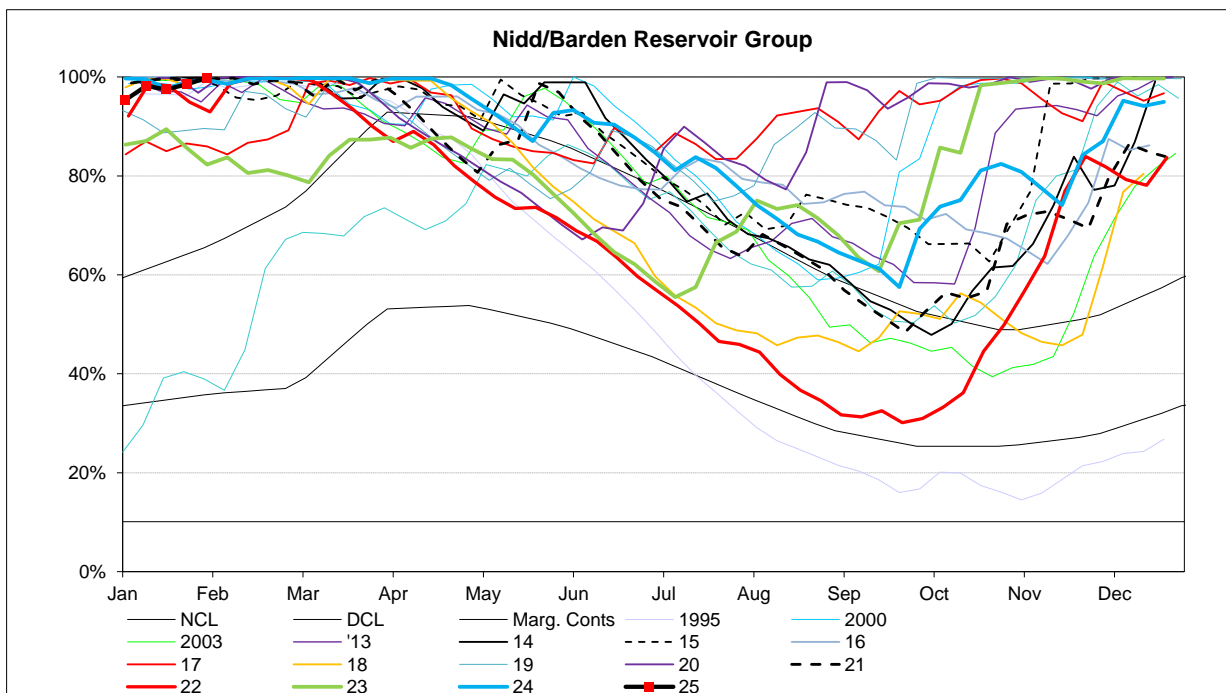
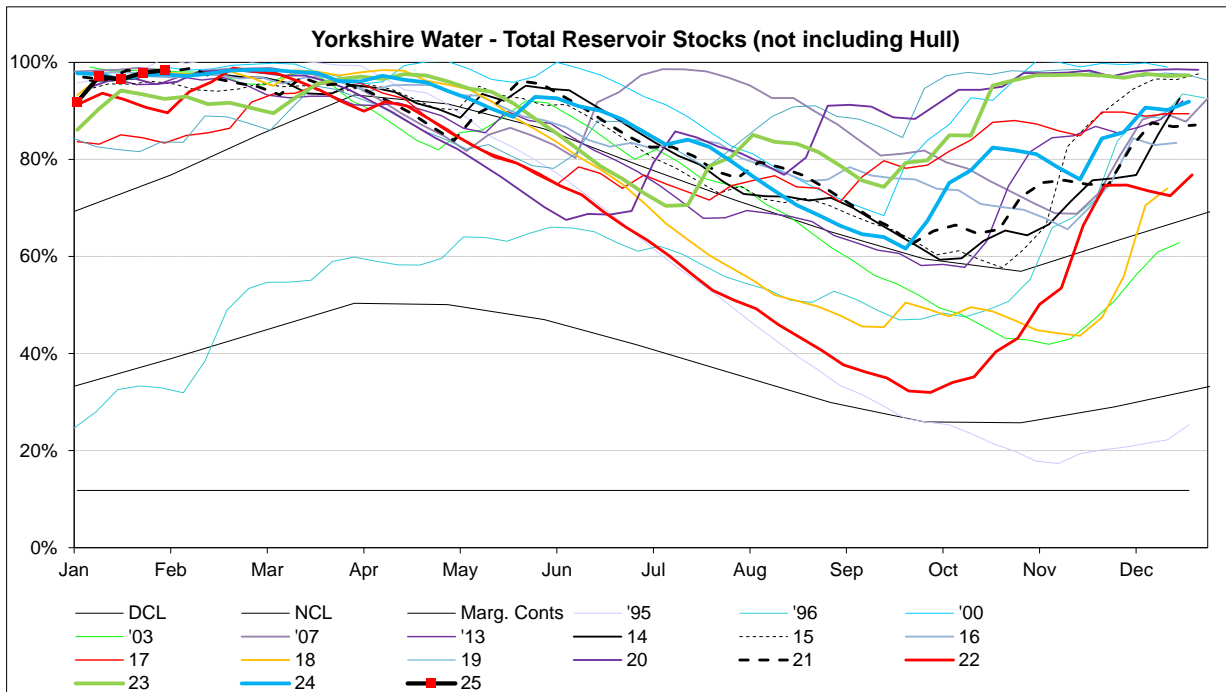
NB Current month demands include some estimates for minor sources and are not exactly comparable with previous months' figures.

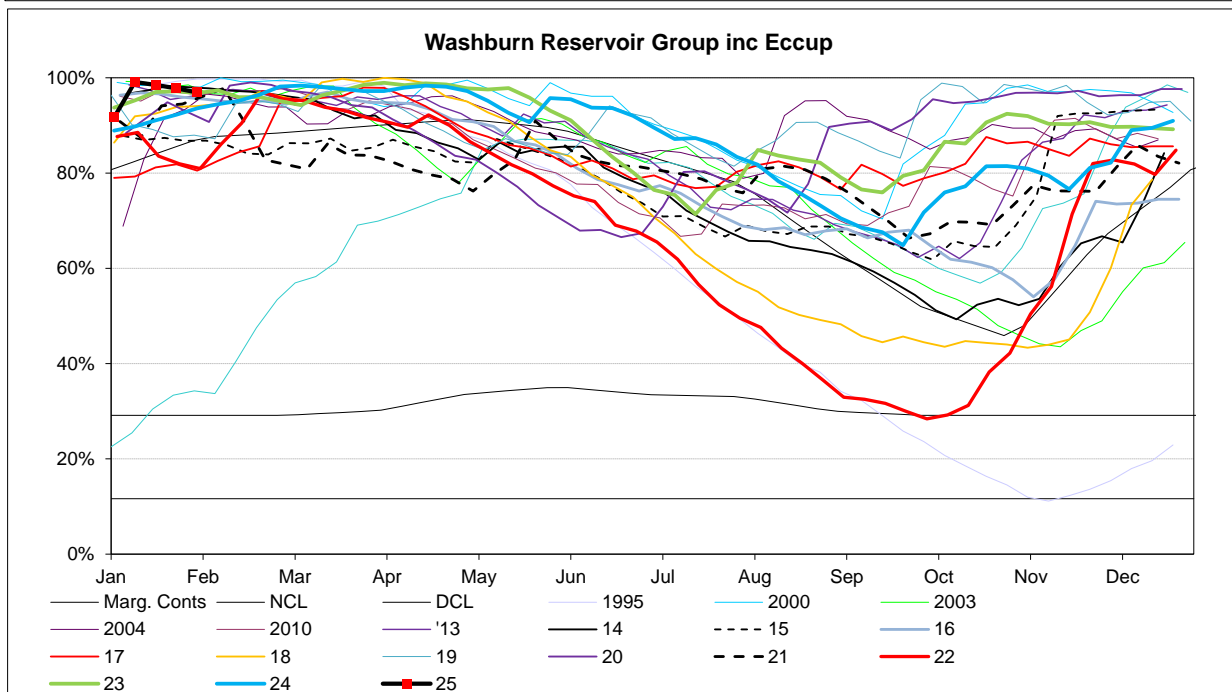
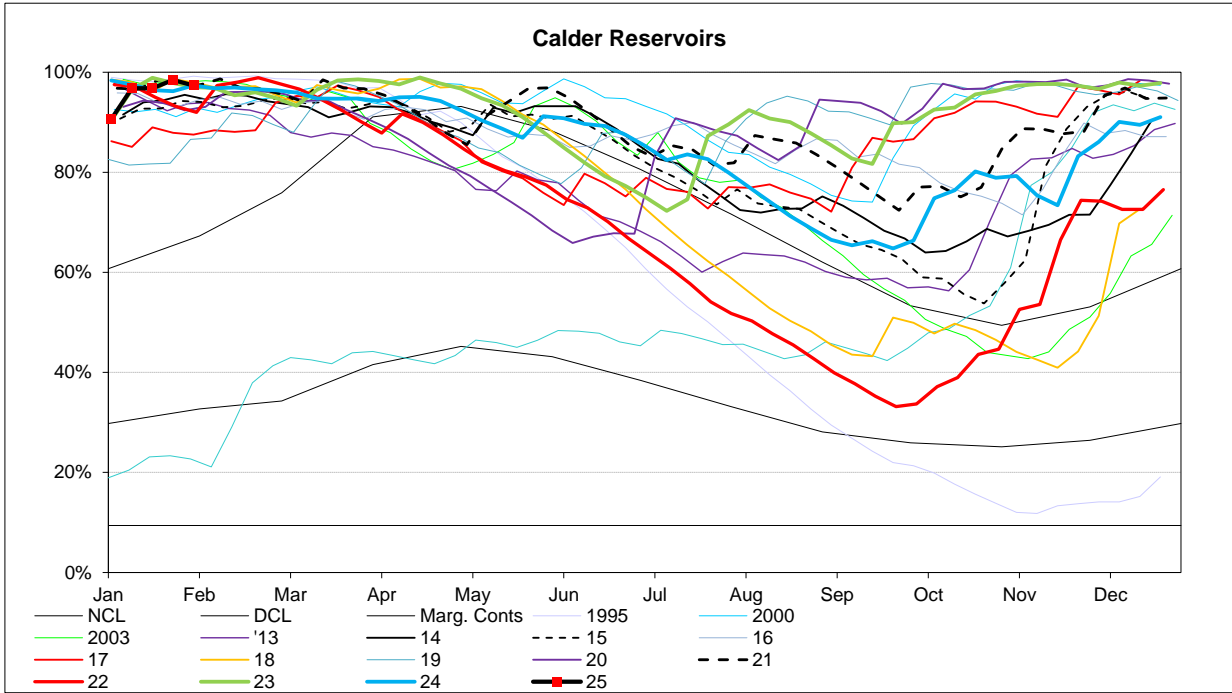




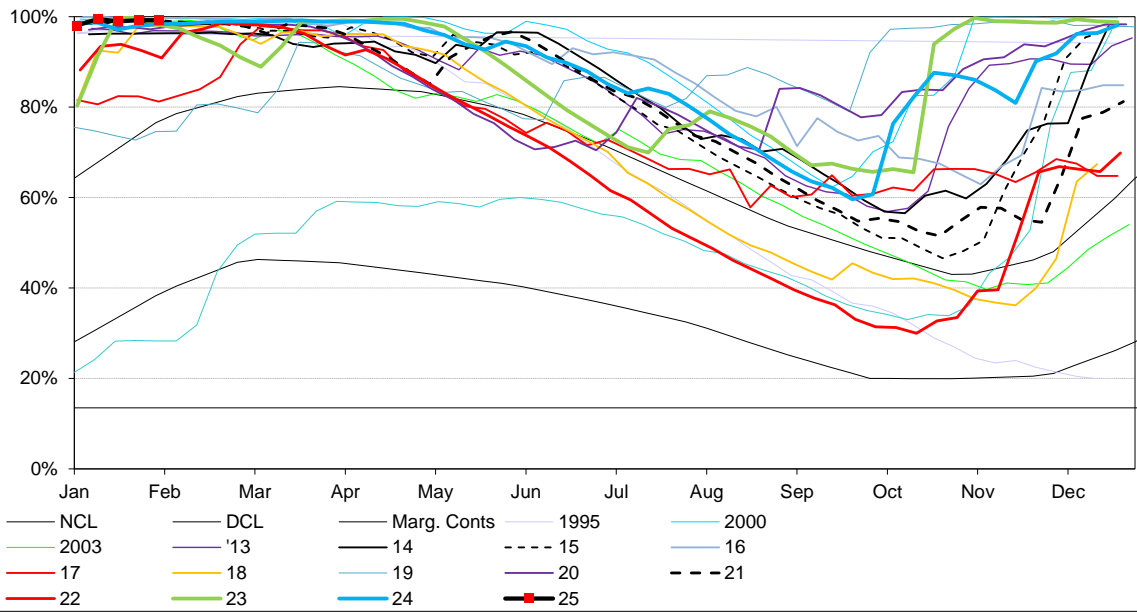


RESERVOIR STOCKS	27/01/2025		% Change	Planned Reservoir Safety Work	Required Drawdown & Duration	
Reservoir Group	% Stocks @	% Change	last week	Reason for Drawdown		
Calderdale (excl Withens Clough)	99.7%	0.5%	1.3%			
Boothwood/Ryburn (incl WC)	97.2%	-0.9%	0.9%			
(Gorpley)	76.7%	4.1%	0.2%			
Huddersfield	95.0%	-2.8%	3.6%			
Brownhill/Digley	99.2%	-0.3%	-0.5%			
Riding Wood	100.0%	0.0%	0.0%	Leakage Investigation	Aug 24 - Dec 24	82.0%
Walshaw Dean Lower	100.0%	1.4%	12.7%	Access for Tunnel Grouting at Middle IRE	Apr 24 - Oct 24	28.0%
Widdop	100.0%	0.0%	2.1%	Increase Drawdown Capacity	May 25 - June 25	21.0%
Widdop	100.0%	0.0%	2.1%	Increase Drawdown Capacity	June 25 - Aug 25	10.0%
Brownhill	100.0%	0.0%	0.0%	Leakage Investigation	Apr 25 - Sept 25	51.0%
Longwood Comp IRE	N/A	N/A	N/A	Spillway Grouting	TBC	40.0%
Walshaw Dean Lower IRE	100.0%	1.4%	12.7%	OSA Repairs	Apr 25 - May 25	86.0%
Longwood ESR	N/A	N/A	N/A	Pipework Painting	TBC	76.0%
Calder Area Total	97.4%	-1.1%	1.6%			
Nidd/Barden/Chelker	99.8%	1.4%	1.0%			
Grimwith	100.0%	2.6%	2.5%			
Worth Valley	99.9%	0.9%	2.3%			
March Ghyll	83.4%	-4.4%	13.7%	Embankment Stability Works	Jan 23 - Dec 24	86.0%
Ponden	100.0%	0.0%	0.0%	Repair Ground Anchor	Aug 24 - Mar 25	87.6%
Keighley Moor	99.2%	5.1%	19.6%	Seepage Investigation	Oct 24 - Dec 24	34.0%
Chelker	97.0%	8.6%	-5.1%	Pointing	Nov 24 - May 25	78.0%
Hewenden	100.0%	0.0%	0.0%	Jet Wash Spillway and Survey	TBC	87.0%
Chelker	97.0%	8.6%	-5.1%	Pointing	Nov 24 - May 25	59.0%
North West Area Total	99.9%	1.9%	1.8%			
Washburn/Eccup Resrs.	96.9%	-0.9%	-0.7%			
Thornton Steward	92.1%	0.0%	2.5%			
Leighton/Roundhill	100.0%	0.0%	0.0%			
Haverah Park	100.0%	0.0%	12.9%			
Swinsty	100.0%	0.0%	0.0%	Outlet Channel Repairs	Dates tbc	93.0%
Thruscross	100.0%	0.0%	0.0%	Bridge Repairs	Dates tbc	TBC
Cod Beck	100.0%	0.0%	0.0%	Inspection of Overflow and Upstream Face	Aug 24 - Mar 25	83.0%
Randy Mere	N/A	N/A	N/A	Upstream Face Repairs	TBC	17.0%
North Area Total	97.2%	-0.6%	0.9%			
Don Valley & Winscar	95.6%	0.6%	3.4%			
Rivelin Valley	100.0%	0.0%	0.0%			
Little Don	100.0%	0.6%	0.3%			
Ewden Valley	100.0%	0.0%	0.0%			
Loxley Valley	100.0%	0.0%	0.0%			
Redmires	91.3%	-0.9%	2.6%			
Redmires Upper	91.7%	0.0%	0.0%	Damage to Overflow Channel	Nov 23 - Oct 25	98.0%
Redmires Middle	83.5%	-3.1%	9.4%	Damage to Overflow Channel	Nov 23 - Oct 25	89.0%
Broomhead	100.0%	0.0%	0.0%	Install Overflow Debris Barrier	June 24 - Feb 25	95.0%
Strines	100.0%	0.0%	0.0%	Overflow Investigation	Apr 25 - Sept 25	95.0%
Rivelin Upper	100.0%	0.0%	0.0%	Siphon Commissioning	Feb 25 - Mar 25	58.0%
South Area Total	98.9%	0.0%	0.4%			
Tophill Low	82.7%	6.8%	-3.2%			
Hull Aquifer	75.4%	-2.2%	-5.6%			
East Area Total	76.0%	-1.5%	-5.4%			
Regional Total (DCP) (inc East Area)	95.6%	0.0%	0.4%			
YORKSHIRE TOTAL (Supply) (not inc East Area)	98.2%	0.2%	1.2%			





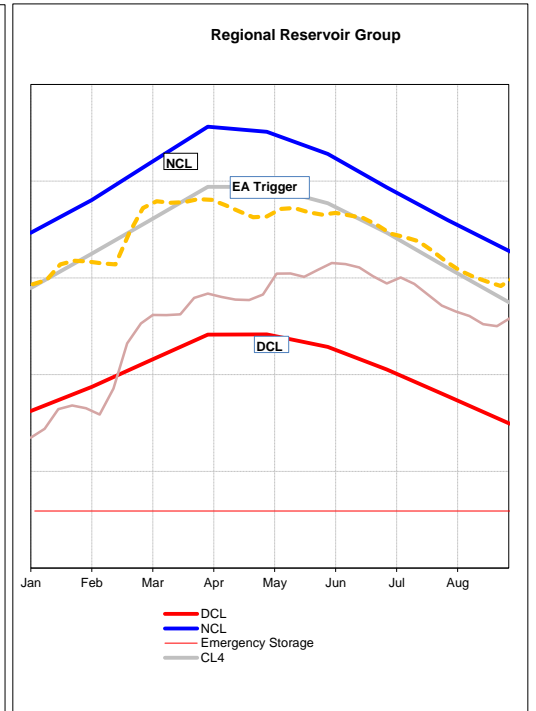
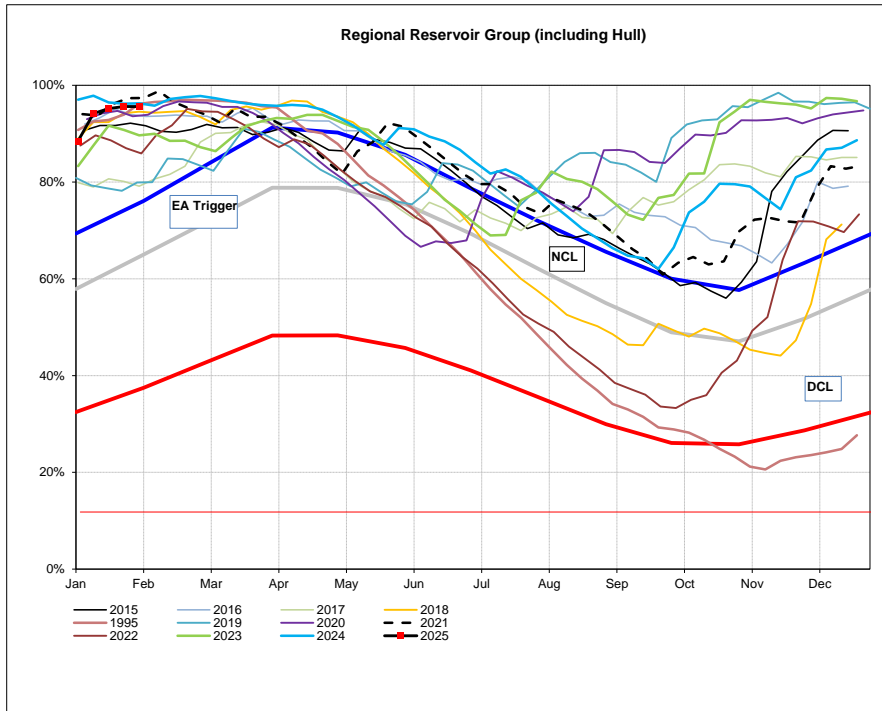
Sheffield & Barnsley Reservoirs



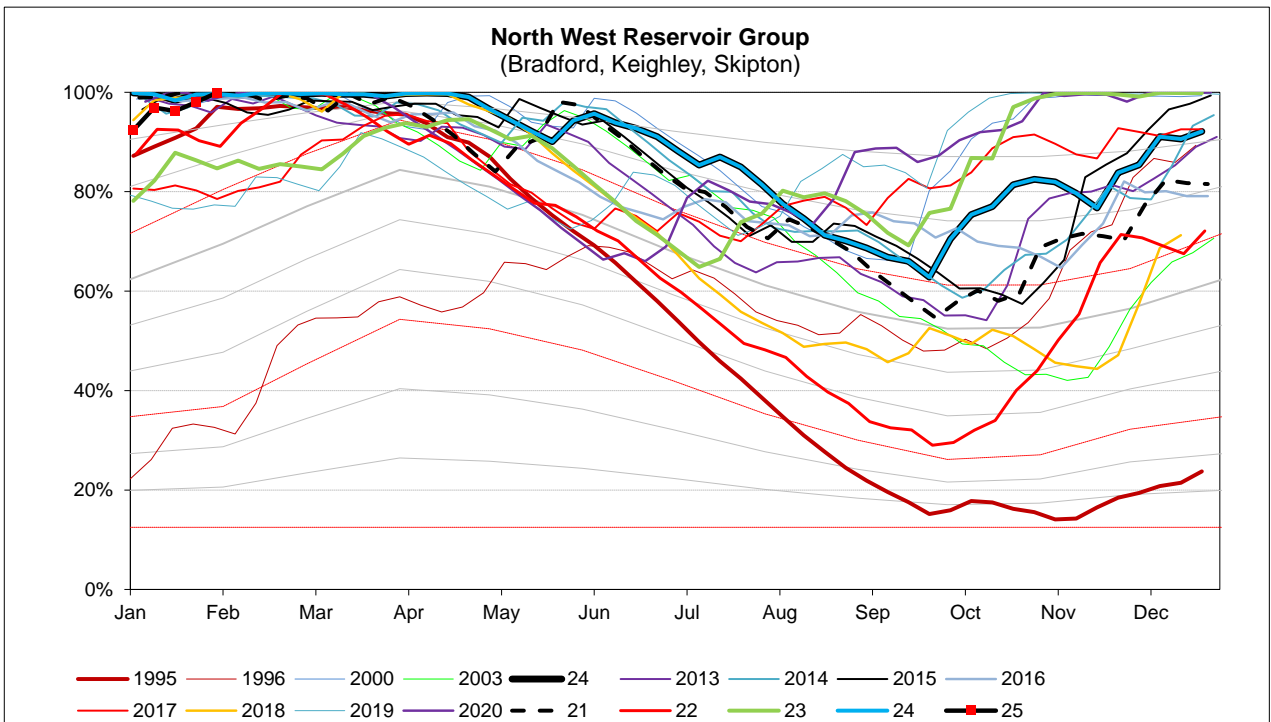
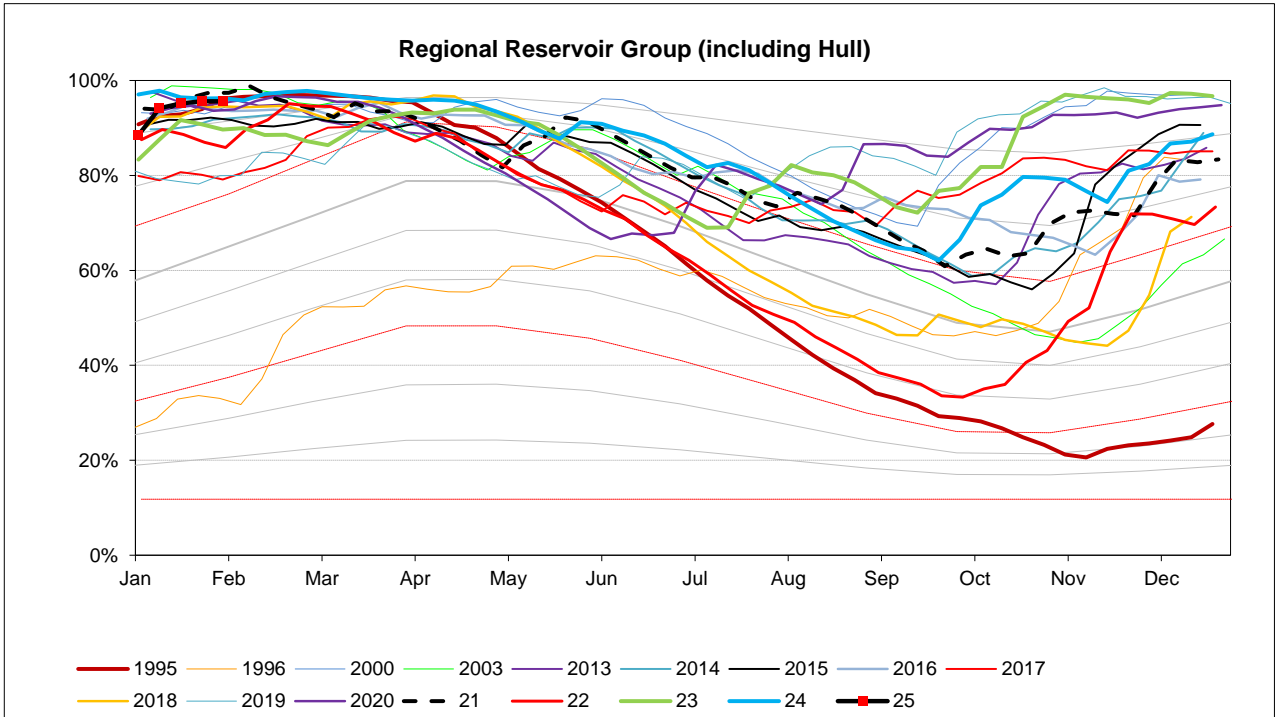
EA STOCKS REPORT

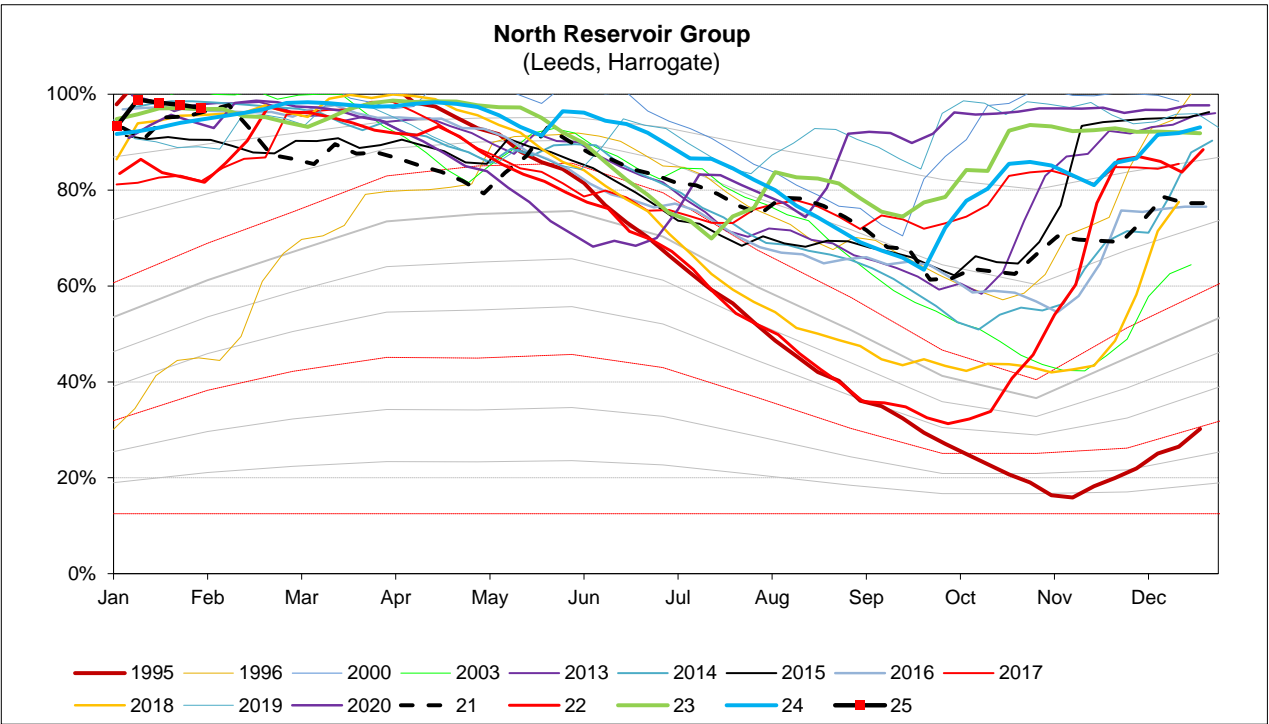
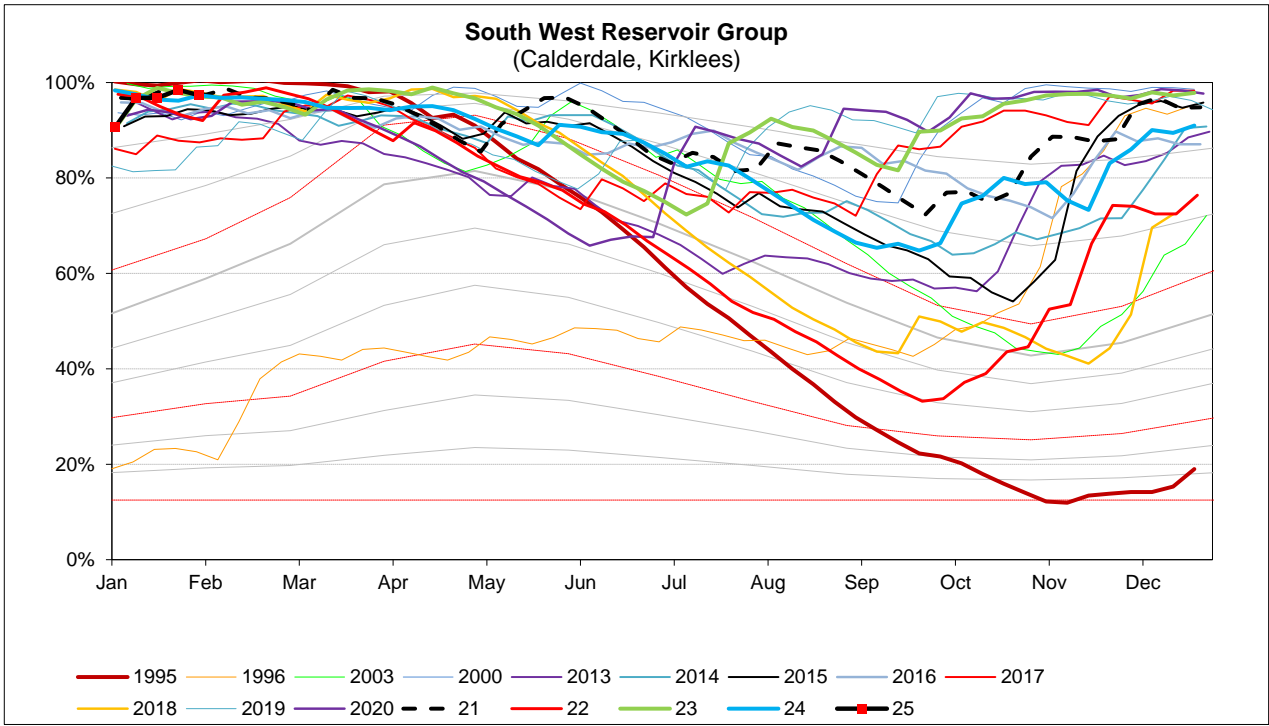
27 January 2025

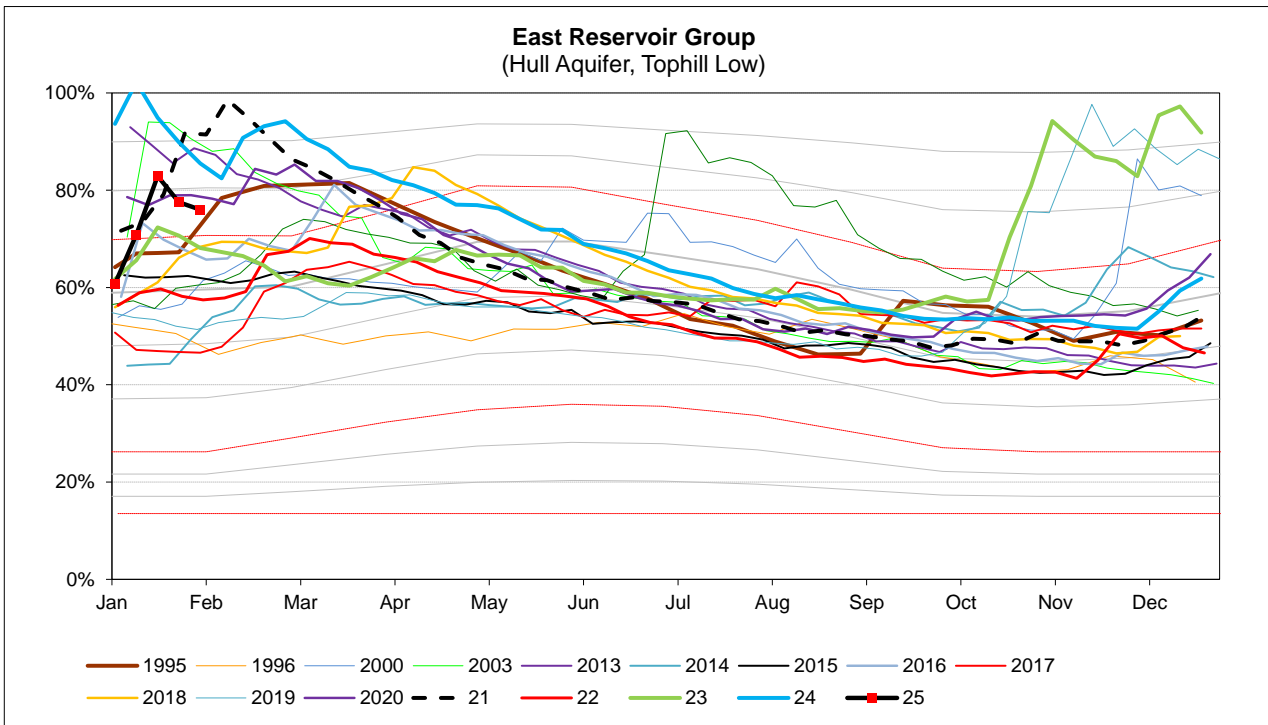
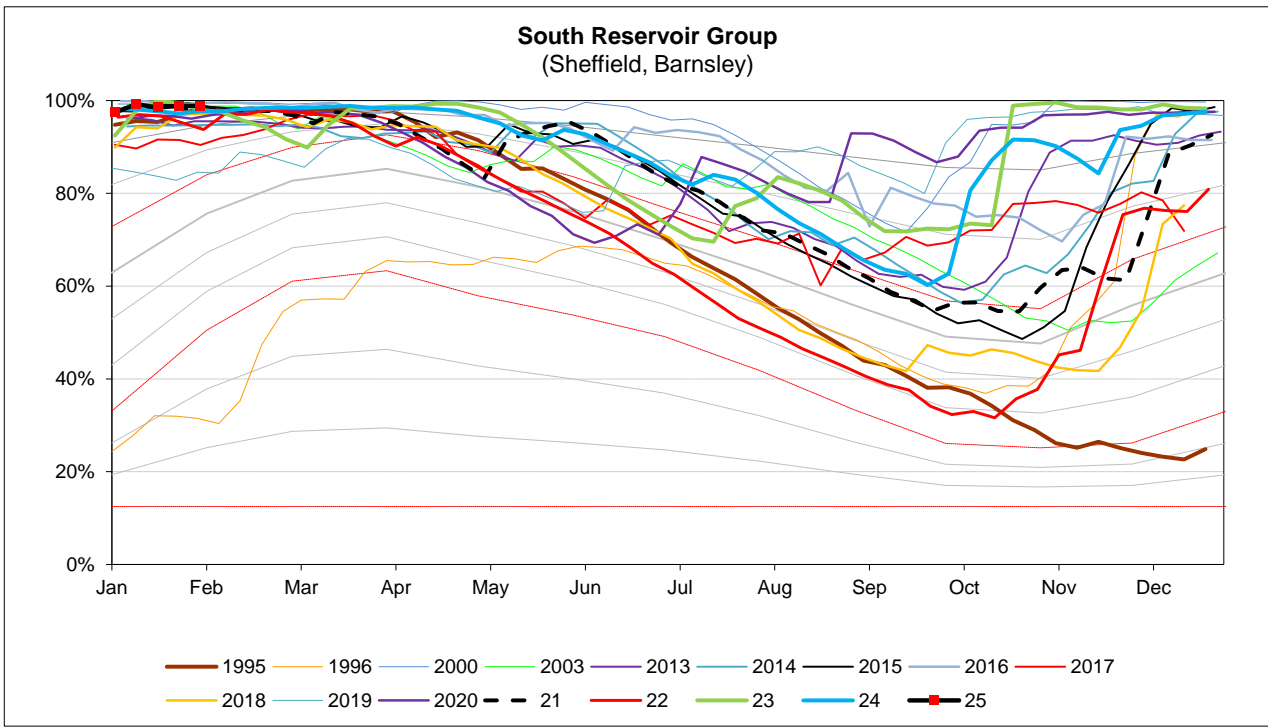
EA Stocks Report		27/01/2025					
	MI	%	% change		MI	%	% change
South West Area Supply Reservoirs				South Area Supply Reservoirs			
Calderdale Group	11106	99.7%	0.5%	Don Valley	2043	98.2%	-1.1%
Huddersfield Group	13402	94.9%	-2.9%	Little Don	7369	100.0%	0.6%
Brownhill/Digley excl Holme	5567	99.1%	-0.3%	Ewden Valley	4937	100.0%	0.0%
Boothwood/Ryburn	11338	96.9%	-1.2%	Loxley Valley	6874	100.0%	0.0%
				Rivelin	815	100.0%	0.0%
South West Reservoir Group	42880	97.4%	-1.1%	Redmires	2537	91.3%	-0.9%
Bradford Area Supply Reservoirs				South Reservoir Group			
Gouthwaite	5811	100.0%	11.0%	South Reservoir Group	24577	98.9%	0.0%
Grimwith	21764	100.0%	2.6%	Winscar Group	8916	95%	0.9%
Nidd/Barden/Chelker	19148	99.8%	1.4%	Compensation Reservoirs			
Rombalds/Thornton Group	2230	99.9%	1.4%	Scout Dike	694	100.0%	0.0%
Skipton Area Supply Reservoirs				Underbank	2867	100.0%	0.0%
Embsay	723	100.0%	0.0%	Morehall	2173	100.0%	0.0%
Worth Valley Group	3309	99.9%	0.9%	Damflask	5106	100.0%	0.0%
North West Reservoir Group	47174	99.9%	1.9%	North Area Supply Reservoirs			
Compensation inc Silsden				Washburn	22649	96.9%	-0.9%
Gouthwaite	5811	100.0%	11.0%	Eccup	6287	89.7%	-2.9%
March Ghyll & Elslack Reservoirs excluded for consistency with stocks predictions in WRAPSIM				Leighton/Roundhill	7401	100.0%	0.0%
				Haverah Park	1002	100.0%	0.0%
				Lumley Moor	381	100.0%	0.0%
				Thornton Steward	874	92.1%	0.0%
East Area Supply Reservoirs							
Tophill Low	1392	82.7%	6.8%	North Reservoir Group	32307	97.2%	-0.6%
Hull Aquifer	14330	75.4%	-2.2%	Lindley Wood Compensat	2920	100.0%	0.0%
East Reservoir Group	15722	76.0%	-1.5%	Regional Reservoir Group	171576	95.6%	0.0%
				(sum of South West, North West, East, South, North & Winscar Rese			

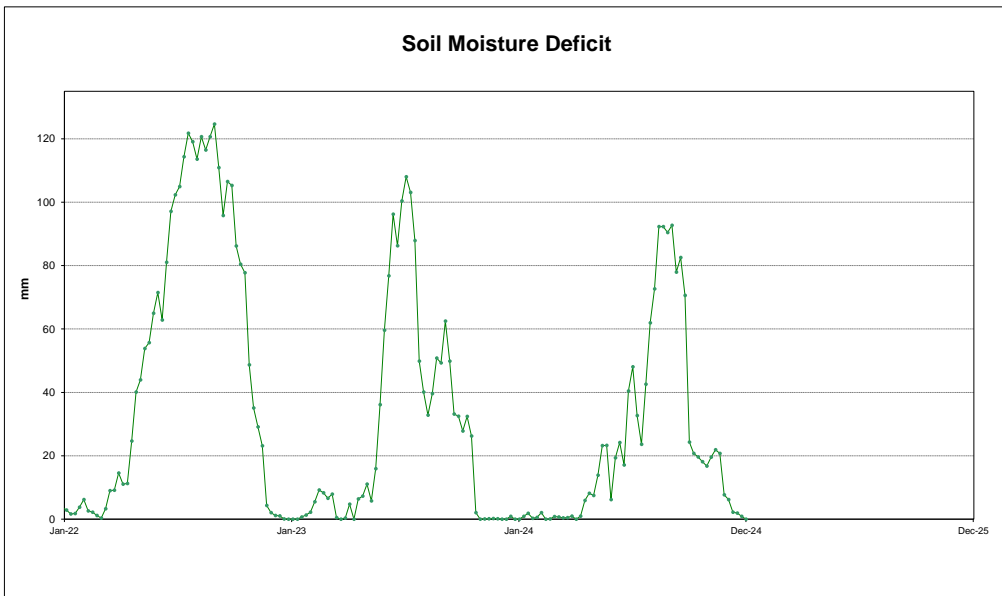
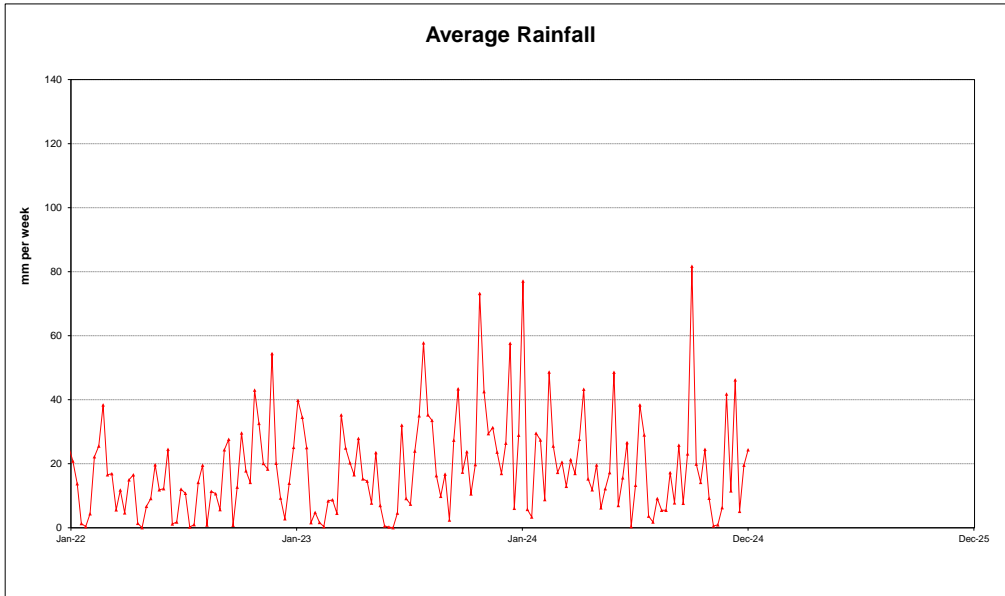
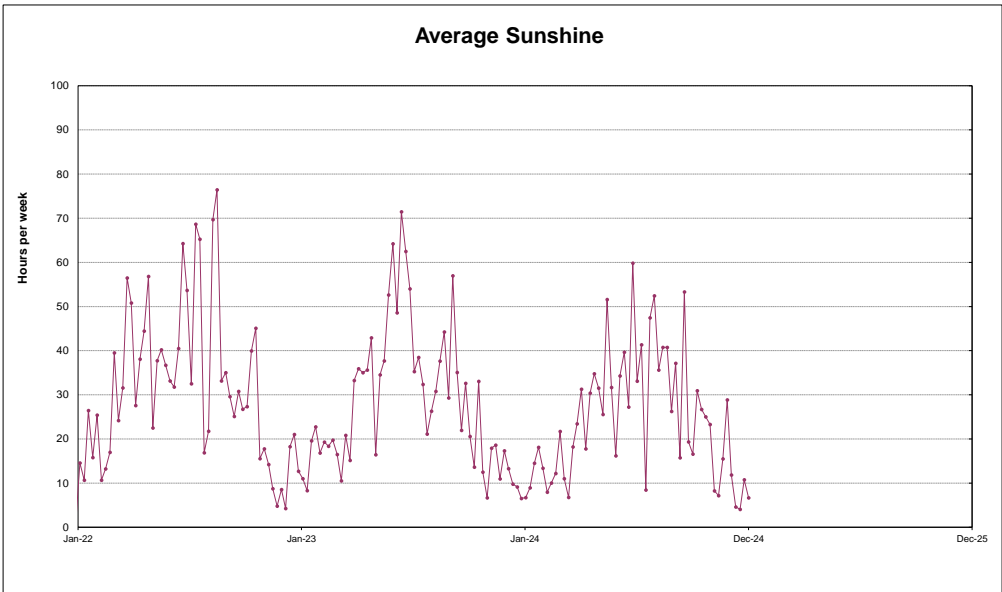


Triggers	
EA early warning (CL4)	Water resources to advise EA on production
Hosepipe Restrictions	When projected falling stocks fall below DCL
Drought Orders	When stocks are below DCL.









This page will normally be updated monthly (approx mid month).

This data may be subject to change following routine validation checks.

Where showing a negative value, this is normal at certain sources, due to the imports of water into that source being greater than the volumes abstracted.

Annual licences run from April to March.

Units in MI

Serial No	Source	Reporting Year	December	Year to date MI	Run date	
					01/01/2025	% of Annual Limit
02/27/023/332	Ainderby Steeple Boreholes	C	117	1493	1760	84.8%
03/28/083/010	Armthorpe Boreholes	C	224	2689	3319	81.0%
03/28/083/012	Austerfield Boreholes	C	231	4151	11615	35.7%
02/27/022/020	Aysgarth & Newbiggin Springs	C	16	181	341	53.1%
02/27/012/035	Baitings, Ryburn & Blackhouse reservoirs	C	279	3781	20457	18.5%
02/27/023/032	Bellerby Borehole and springs near Bellerby	F	81	405	1250	32.4%
02/27/022/209	Birk Gill & River Burn	C	514	4176	6400	65.2%
02/27/012/254	Boothwood Reservoir & associated catchwaters	C	240	3666	20457	17.9%
02/27/10/112	Boshaw Whams Reservoir	C	0	0	55	0.0%
03/28/083/105	Boston Park Boreholes	C	187	2245	3318	67.7%
02/27/024/305	Brayton Barff Boreholes	C	0	0	2250	0.0%
02/26/030/002	Bridlington	C	145	1895	2500	75.8%
02/27/005/031	Broomhead Reservoir	F	1153	9833	12410	79.2%
02/26/030/004	Burton Agnes	C	79	909	1000	90.9%
02/27/018/080	Carlton Hanger Lane Boreholes	C	333	3156	3500	90.2%
02/27/018/079	Carlton Mill Lane Boreholes	C	164	1855	3800	48.8%
02/27/019/009	Carr Bottom Reservoir, Burley Woodhead	C	22	75	409	18.2%
02/27/023/340	Catterick Boreholes	F	200	1887	2920	64.6%
02/27/027/136	Cayton Carr Lane Boreholes	C	128	1392	3928	35.4%
02/27/027/163	Cayton Station Road Borehole	C	76	1045	2646	39.5%
02/27/019/137	Chelker Reservoir	C	292	2849	5000	57.0%
02/27/023/031	Coalsgarth Springs	C	6	89	750	11.8%
02/27/011/064	Colne Valley Catchwaters	F	6	1860	5840	31.8%
02/26/032/126	Cottingham Well	C	927	8019	18184	44.1%
02/27/018/081	Cowick Boreholes	C	400	4464	5250	85.0%
02/27/023/046	Cranehow & Downholme Springs	C	0	0	318	0.0%
02/27/023/030	Crumma, Newsham & Gandale Springs	C	63	854	1364	62.6%
02/27/005/030	Dale Dyke & Agden Reservoirs	F	873	8359	21412	39.0%
02/27/012/261	Dean Head & Scammonden	F	3	916	3650	25.1%
02/27/19/121	Dib Spring, Hawkswick	C	0	0	27	0.0%
02/26/032/126	Dunswell Well	C	495	8107	16593	48.9%
NE/27/025/021	East Ness Boreholes	F	292	2708	5680	47.7%
02/26/031/087	Elmswell Wold Borehole	C	5	181	1273	14.2%
02/27/015/045	Embsay Reservoir	C	116	1814	1846	98.3%
02/27/016/196	Esholt Sewage Treatment Works	C	0	0	88	0.0%
02/26/032/124	Etton Boreholes	C	182	1598	5100	31.3%
03/28/083/012	Finningley Boreholes	C	300	3597	6780	53.1%
02/27/022/328	Fossdale (High Shaw) Springs	C	10	101	227	44.2%
02/27/018/120	Goosehouse Boreholes	F	164	2421	3500	69.2%
02/27/012/043	Gorpley Reservoir	C	0	0	1823	0.0%
02/27/016/022	Graincliffe Reservoir	F	222	1319	2728	48.3%
02/27/012/037	Green Withens Ringstone Res & catchwater	C	416	4966	20457	24.3%
02/27/019/051	Greenhow Tunnel (Nidd Aqueduct) Dale Head Intake	C	0	0	214	0.0%
02/27/019/052	Greenhow Tunnel (Nidd Aqueduct) No.2 Access Shaft	C	0	0	6819	0.0%
NE/27/019/005	Grimwith Reservoir to Nidd Aqueduct	F	476	1813	3650	49.7%
02/26/030/003	Haisthorpe Boreholes	C	337	4378	5000	87.6%
03/28/083/012	Hatfield Boreholes	C	152	1866	3319	56.2%
03/28/083/100	Hatfield Woodhouse Boreholes	C	0	0	3320	0.0%
02/27/029/010	Hazel Head Springs	C	51	578	1162	49.7%
02/27/012/041	Hebden, Luddenden & Hebble Valley Resrs	F	1089	9768	15695	62.2%
02/27/018/077	Heck Boreholes	C	0	358	2489	14.4%
03/28/083/012	Highfield Lane Boreholes	C	287	3245	11615	27.9%
02/27/023/685	Hollin Hill Borehole	F	0	17	45	36.8%
02/27/010/063	Holmestyes & Digley Reservoirs	F	248	2370	5840	40.6%
02/27/22/024	Horsehouse Spring, leyburn	C	0	0	33	0.0%
02/27/027/002	Howe Hill Well	F	81	765	1014	75.5%
02/26/031/006	Hutton Cranswick	C	39	509	796	63.9%
02/27/005/012	Ingbirchworth Reservoir & Annat Royd Intake	C	-89	1212	3637	33.3%
02/27/005/202	Ingbirchworth South Borehole	F	5	41	132	31.2%

02/27/027/058	Irton	C	483	5403	8215	65.8%
02/27/21/015	John O'Gaunts and Beaverdyke Reservoirs	C	0	0	1909	0.0%
02/27/014/010	Keighley Moor Reservoir	F	5	312	6951	4.5%
02/27/025/128	Keld Head Boreholes	C	187	2011	3319	60.6%
02/26/032/126	Keldgate Boreholes	C	179	1333	5819	22.9%
02/26/031/002	Kilham	C	25	129	1818	7.1%
02/27/005/032	Langsett Reservoir	F	1210	9844	17155	57.4%
02/27/022/210	Leighton Reservoir & Spruce Gill stream intake	C	561	6526	13184	49.5%
03/28/083/107	Littleworth Borehole	C	0	0	1659	0.0%
02/27/028/270	Loftsome Bridge ASR Borehole No.1	C	0	0	150000	0.0%
02/27/014/009	Lower Laithe Reservoir	F	301	2010	6951	28.9%
02/27/005/011	Midhope Reservoir & Knoll Brook Intake	F	366	2856	17155	16.6%
02/26/034/006	North Newbald	C	0	0	548	0.0%
03/28/083/012	Nutwell Boreholes	C	227	2676	4983	53.7%
02/27/019/006	Panorama, Hilltop & Old Reservoirs & Springs	C	22	251	1000	25.1%
02/27/018/078	Pallington Boreholes	C	215	2372	5000	47.4%
02/27/014/058	Ponden Reservoir	F	10	933	6951	13.4%
02/27/016/023	Reva Reservoir, Hawkesworth	C	25	1000	1364	73.3%
02/27/005/029	Rivelin and Redmires Reservoirs	F	773	3342	8030	41.6%
02/27/028/017	River Derwent at Elvington	F	4854	43055	75000	57.4%
02/27/028/083	River Derwent at Loftsome Bridge	F	2070	19450	30400	64.0%
02/27/029/012	River Esk	C	280	3217	7823	41.1%
02/26/031/047	River Hull & West Beck	C	1242	14803	25000	59.2%
02/26/032/194	River Hull for Sewer Cleaning	C	0	0	91	0.0%
02/27/024/078	River Ouse at Acomb	F	893	8052	35000	23.0%
02/27/024/158	River Ouse at Moor Monkton	F	2445	24444	73000	33.5%
02/27/022/214	River Ure at Kilgram Bridge	F	121	3031	15000	20.2%
02/27/020/196	River Wharfe at Arthington	F	9	347	19009	1.8%
02/27/019/129	River Wharfe at Lobwood	F	1376	17373	27392	63.4%
03/28/083/012	Rossington Bridge Boreholes	C	0	0	5172	0.0%
02/27/022/027	Roundhill and Lumley Moor Reservoirs	C	0	6	3500	0.2%
02/27/005/013	Royd Moor Reservoir & Intakes	C	95	1149	2955	38.9%
02/27/021/016	Scargill Reservoir	C	60	969	1932	50.2%
02/27/021/092	Scarhouse & Angram Resvrs with tunnel & catchwater	C	3169	38013	38164	99.6%
02/27/15/149	Silsden Beck, Stilling-Basin at foot of Silsden Reservoir Emb	C	0	0	10	0.0%
02/26/032/126	Springhead Well	C	756	9649	13638	70.7%
02/27/022/021	Stalling Busk & Marssett Springs	C	0	0	33	0.0%
02/27/022/208	Stock Beck, Carlesmoor Beck & River Laver	C	890	3098	3500	88.5%
02/27/023/684	Stubbing Nook Borehole	F	0	13	135	9.6%
03/28/083/012	Thornham Boreholes	C	299	3580	6213	57.6%
02/27/016/160	Thornton Moor & Stubden Reservoirs	C	354	1966	6214	31.6%
02/27/012/038	Turvin Clough	C	107	491	4014	12.2%
02/27/019/054	Upper & Lower Barden Reservoirs	C	230	4944	14223	34.8%
02/27/020/088	Washburn Valley Reservoirs	C	3417	33515	43800	76.5%
02/27/015/041	Watersheddles Reservoir	F	196	1267	6951	18.2%
02/27/016/021	Weecher Reservoir	C	20	143	909	15.8%
02/27/011/065	Wessenden Valley, Blackmoorfoot & Deerhill	F	1033	7599	12410	61.2%
02/27/023/034	West Stonesdale (Garland Hill) Springs	C	0	0	282	0.0%
02/27/015/042	Whinney Gill & Jenny Gill Reservoirs	C	1	8	377	2.1%
02/27/005/026	Winscar, U & L Windleden, Harden & Snailsden	F	317	6322	10140	62.3%
02/27/012/036	Withens Clough Resr & Catchwater	C	218	2098	3319	63.2%
02/27/010/011	Yateholme, Riding Wood, Ramsden & Brownhill	F	288	2501	6820	36.7%

Licences with Aggregated Annual Quantities	Reporting Year	December	Year to date MI	Annual Limit	% of Annual Limit
Baitings, Ryburn, Boothwood, Green Withens	C	934	12413	20457	61%
Langsett, Midhope	F	1576	12700	17155	74%
Worth Valley	F	513	4523	6951	65%
River Derwent (Elvington, Loftsome)	F	6924	62505	94841	66%
Cayton, Irton	C	687	7840	10700	73%
Selby Boreholes	C/F	1275	14626	25283	58%
Doncaster Wellfield	C	1906	24050	30295	79%
Doncaster Sub Group	C	1496	19116	26049	73%
Austerfield & Highfield Lane	C	518	7396	9956	74%
Hull Groundwater Sources	C	2357	27108	32850	83%

Third Party Agreements (Calendar Year)**Units in MI****Run date****01-Jan-25**

Source	Reporting Year	December	Year to date MI	Annual Limit	% of Annual Limit
CRT, Hudds Narrow Canal	C	21	1219	1273	96%
Severn Trent Ladybower Reservoir	C	1552	20545	21550	95%

Reading date:**02-Jan-25**

	Reporting Year	Year to date MI	Annual Limit	% of Annual Limit
Winscar To Langsett Transfer Usage	F	1480	2482	60%