

1. Rainfall

The Yorkshire Region Has Received 114.3% of LTA for May

2. Reservoirs (surface water supply reservoirs not including Hull)

Over the Past Week Our Reservoir Stocks Have Increased By 0.04% To 93.8%

3. Rivers

All of Our Rivers are Above Critical Levels

4. Demand

Regional Demand = 1310.3 Ml/d (including York)

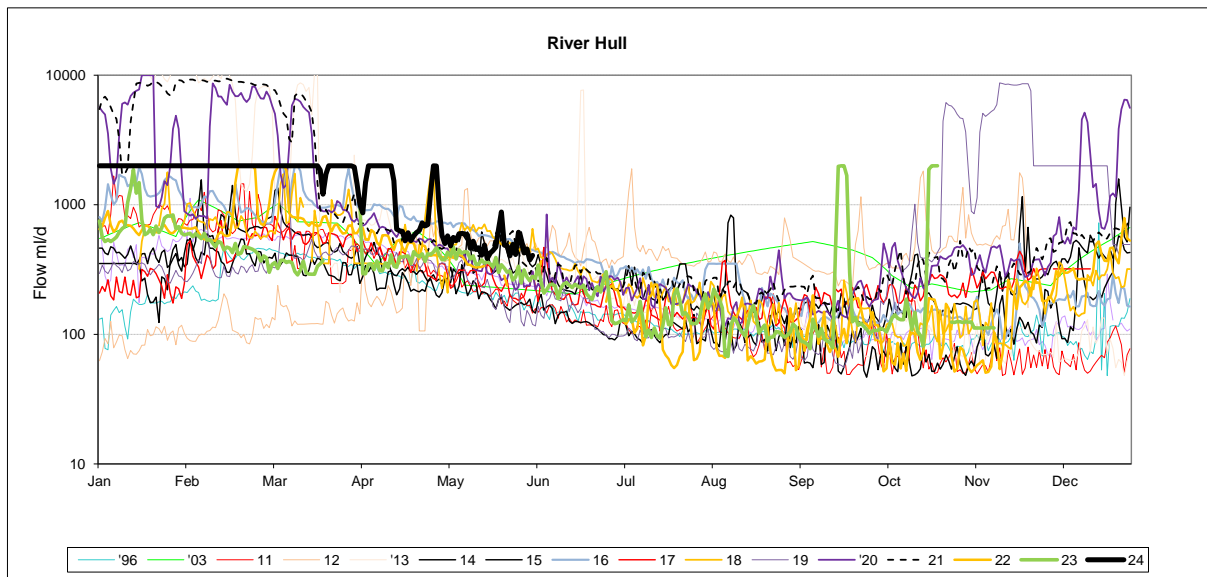
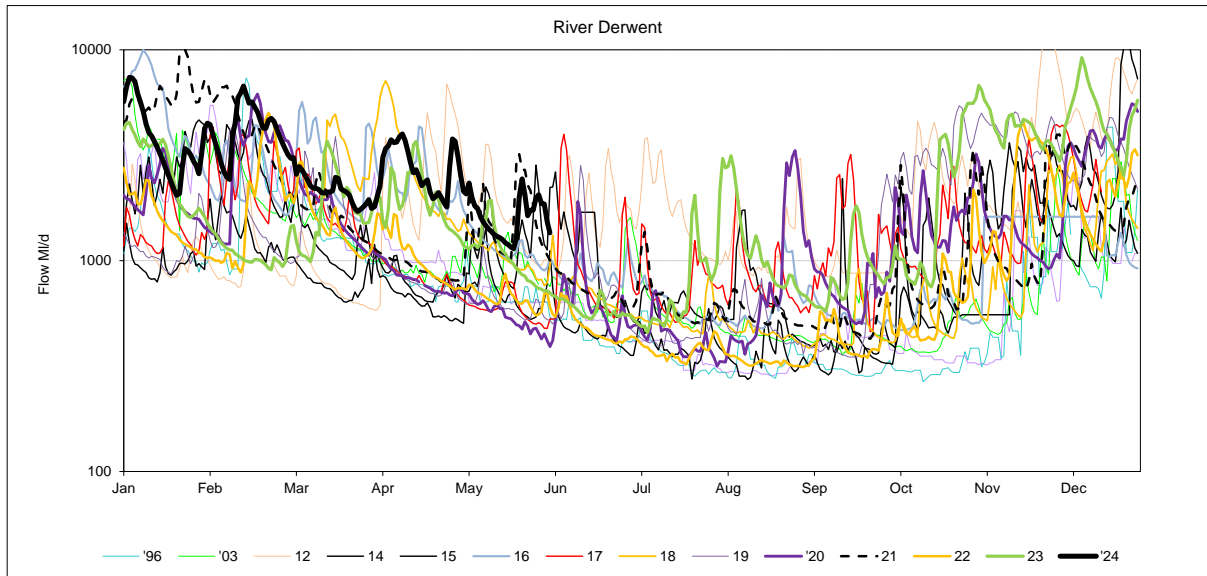
5. Comments

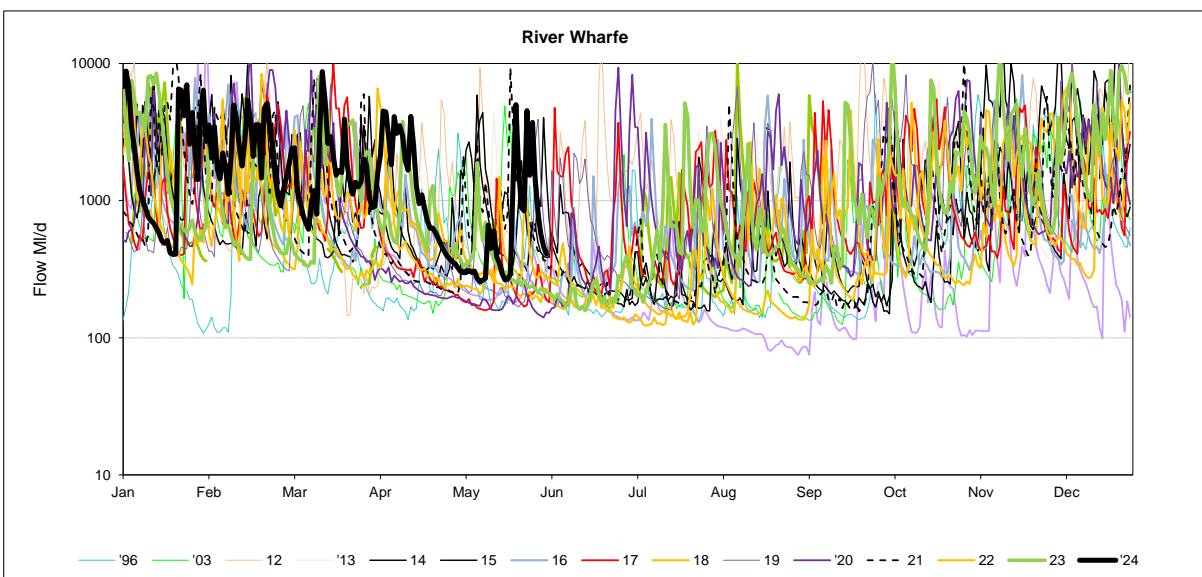
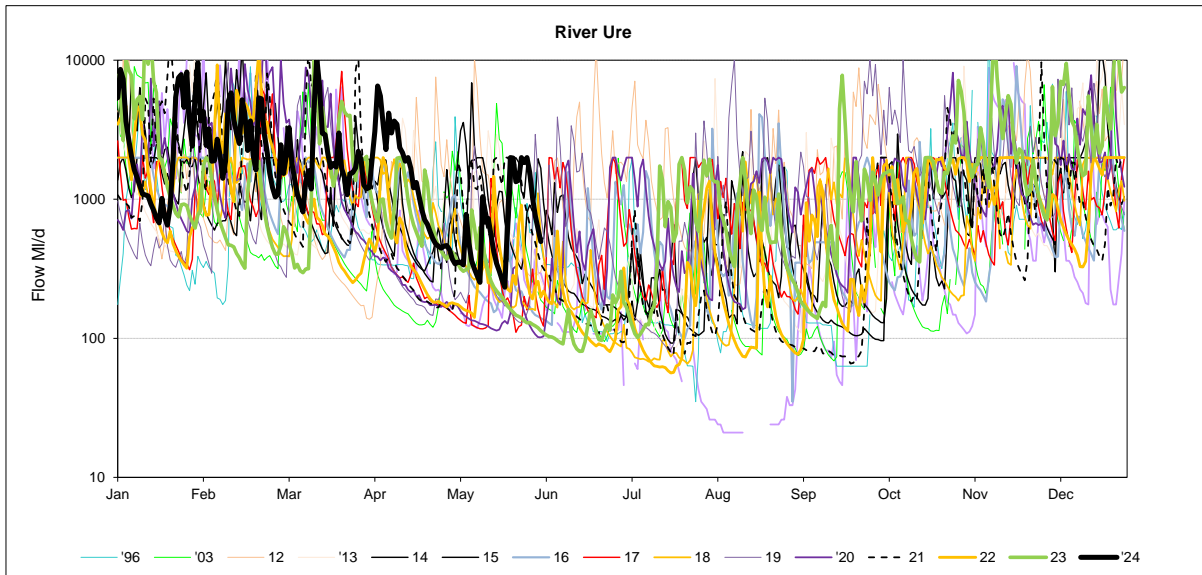
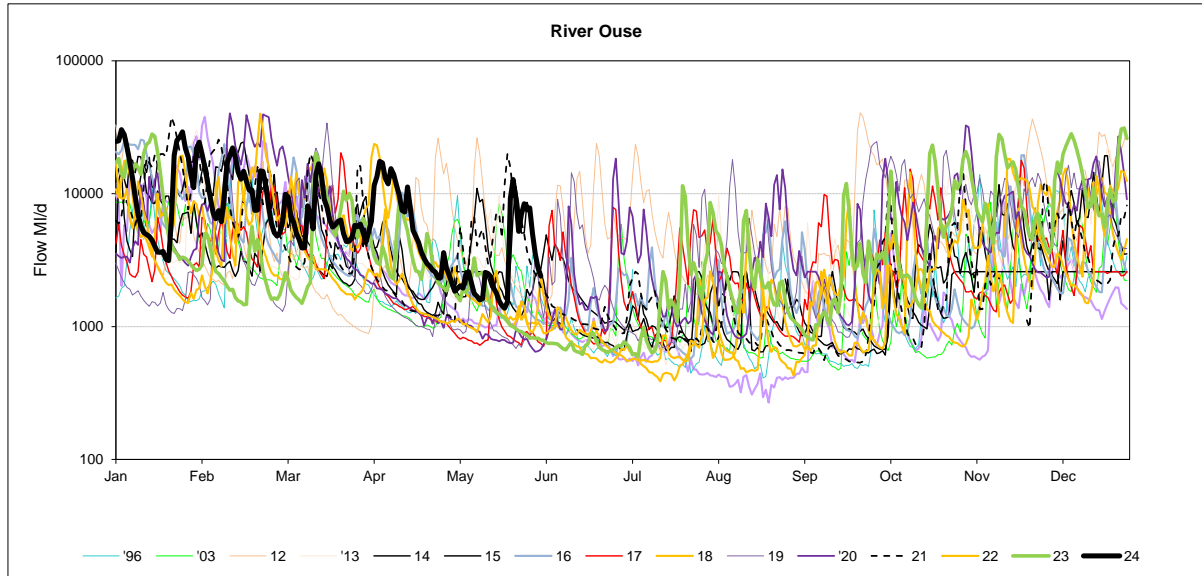
Page 16 - Abstraction is not updated with April's data due to an issue with our systems and will be updated once resolved.

RIVER FLOWS

27 May 2024

	Mon 27-May	Mon 20-May	Mon 13-May	Mon 06-May	Critical flow bands
Derwent	✓ 1736	✓ 1161	✓ 1376	✓ 1989	305
Hull (using gauged (residual flows) only from 2011)	✓ 495	✓ 444	✓ 523	✓ 559	45 / 159 / 227
Ouse	✓ 7001	✓ 1440	✓ 1624	✓ 1945	400 / 650 / 1000
Ure	✓ 1996	ⓘ 263	✓ 1045	✓ 338	50 / 163 / 300
Wharfe	✓ 4532	ⓘ 267	✓ 662	ⓘ 311	252 / 389 / 488 / 580





Yorkshire Region (Met Office)				England/Wales	
Month	mm	LTA	LTA(%)	mm	LTA(%)
October	148	84	176%	156	156%
November	105	90	117%	120	118%
December	162	89	182%	160	155%
January	100	79	127%	96	103%
February	97	69	141%	140	191%
March	79	59	133%	103	160%
April	95	58	165%	92	153%

SOURCE OF DATA : Hydrological Summary of Gt Britain, Institute of Hydrology

Yorkshire Water Services Data			
Rainfall Station	Total May	LTA May	LTA % May
Tophill	NDA	39	0%
Cottingham	NDA	41	0%
Bridlington	NDA	46	0%
Roundhill	83.3	88	95%
Fewston	87.3	69	127%
Osmotherley	88.5	47	188%
Scar House	100.8	107	94%
Watersheddles	177.1	97	183%
Gt Walden Edge	104.2	91	115%
Walshaw Dean	145.8	100	146%
Blackmoorfoot	98.8	89	111%
Ramsden	77.9	111	70%
Redmires	73.6	83	89%
Langsett	66.8	84	80%
YORKSHIRE REGION	100.4	87.8	114%
EAST REGION	88.5	47.0	188%
PENNINE (WEST)	100.4	87.8	114%

NDA= No data available/lack of readings, impacts % LTA for the month
SOURCE OF DATA : YWS RAIN GAUGES- weekly, so monthly data may include previous month or miss start of month

MAJOR SOURCE OUTPUTS

27 May 2024

23/05/2024

	Operational Maxima & Design Yields (Ml/d)	WRAP Targets Week Beginning - 23/05/2024	Daily Average Previous 5 Days Starting - 23/05/2024	WRAP Targets Week Starting - 16/05/2024	Daily Average Week Starting - 16/05/2024
WATER TREATMENT WORKS					
CENTRAL					
ECCUP NO 1 WTW	100	53	55	53	56
ECCUP NO 2 WTW	60	44	45	44	30
HEADINGLEY	95	63	67	63	79
HARLOW HILL	41.5	27	25	27	28
THORNTON STEWARD	22.5	20	21	20	22
EAST					
EAST NESS	17	8	9	8	9
IRTON	23.5	13	11	13	13
RUSWARP	12	7	7	7	7
TOPHILL LOW	68	40	9	40	36
KELDGATE	90	60	79	60	70
NORTH WEST					
CHELLOW	175	148	144	148	150
GRAINCLIFFE	60	38	38	38	40
SLADEN VALLEY	12	8	9	8	9
OLDFIELD	10.1	6	5	6	5
EMBSAY	25	17	19	17	19
SOUTH					
INGBIRCHWORTH	20	20	20	20	21
LANGSETT	56	36	55	36	54
(TOTAL)	75	56	75	56	74
EWDEN	40	35	34	35	36
LOXLEY	40	26	31	26	30
(TOTAL)	80	61	65	61	66
RIVELIN	75	64	63	64	73
SOUTH WEST					
ALBERT	55	51	47	51	43
FIXBY	30	21	17	21	18
KIRKHAMGATE	30	17	18	17	19
(TOTAL)	115	89	82	89	80
BLACKMOORFOOT	23	20	19	20	19
LONGWOOD	32	27	21	27	20
(TOTAL)	55	47	39	47	39
HOLMBRIDGE	29	19	20	19	23
GRID					
ELVINGTON	260	159	148	159	152
LOFTSOME BRIDGE	110	75	50	75	32

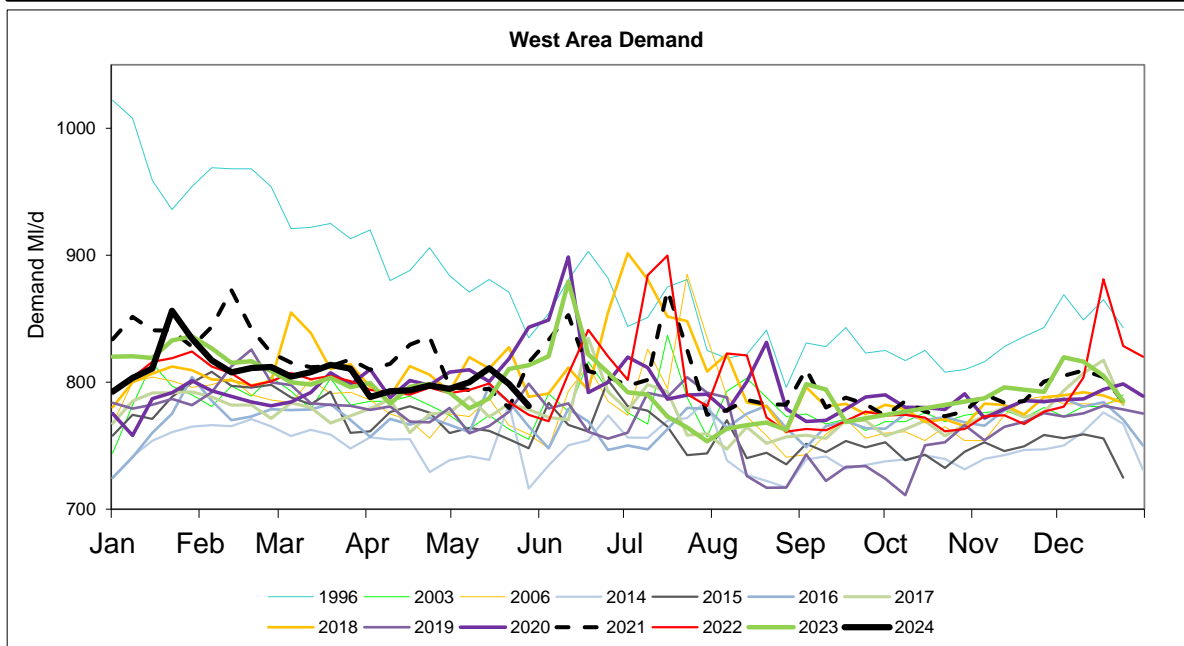
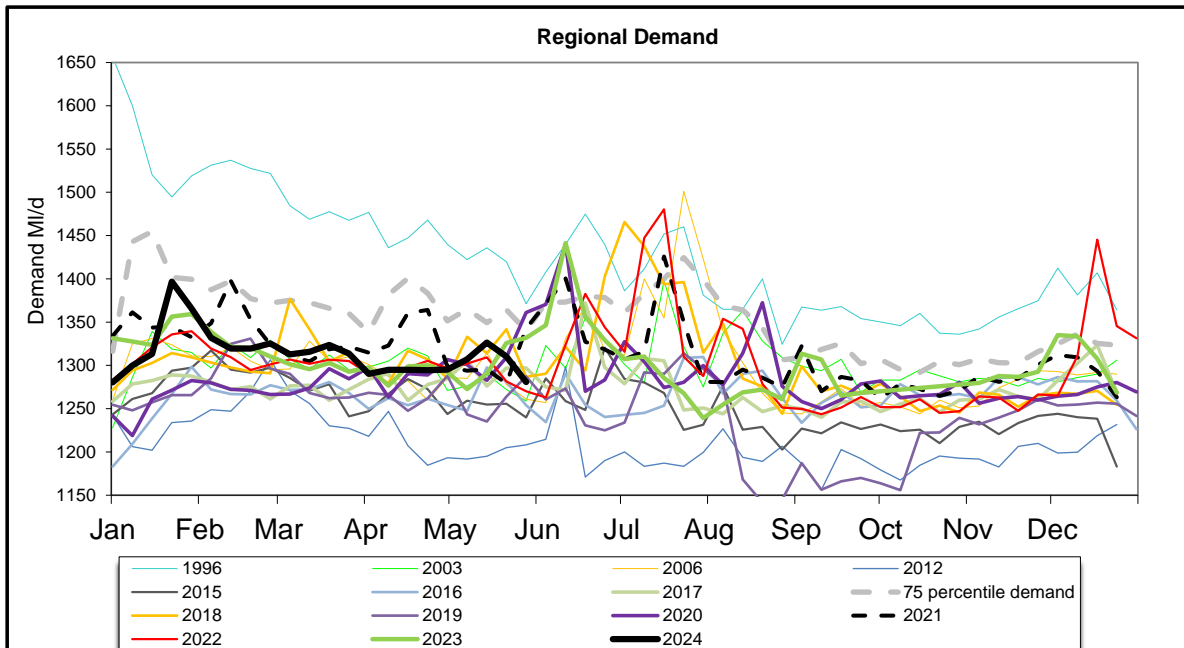
Daily Average Demand MI/d

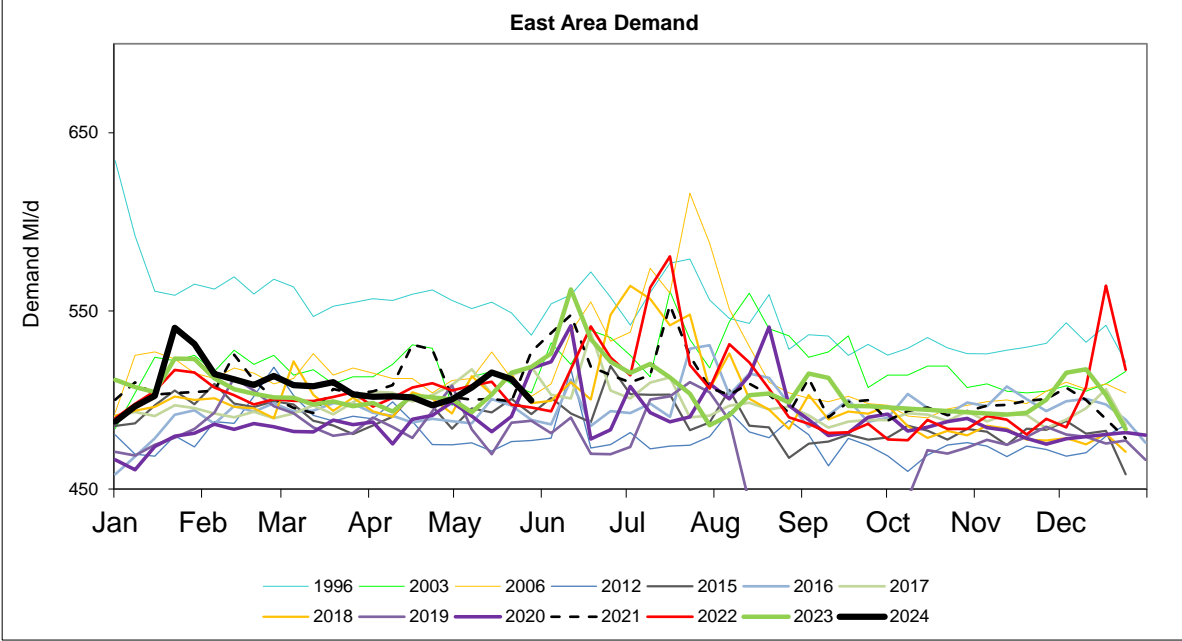
Week Ending Wednesday	L E D S	W A M E + R F I E Y L D	S E B Y	H A R O G A T E	H U L L	M A L T O N	S H E F F / B L Y	D O N C A S T E R	B R A D F O R D	C A L D E R	S K I P T O N	Y O R K A R E A	R E G I O N
24/04/2024	166	76	42	77	153	52	272	80	140	150	37	49	1294
01/05/2024	164	75	41	77	158	52	269	80	142	150	37	49	1295
08/05/2024	166	75	42	76	162	54	273	81	144	149	38	49	1307
15/05/2024	169	76	44	78	166	54	276	83	145	150	38	48	1326
22/05/2024	168	77	41	77	166	54	271	82	142	147	37	46	1310

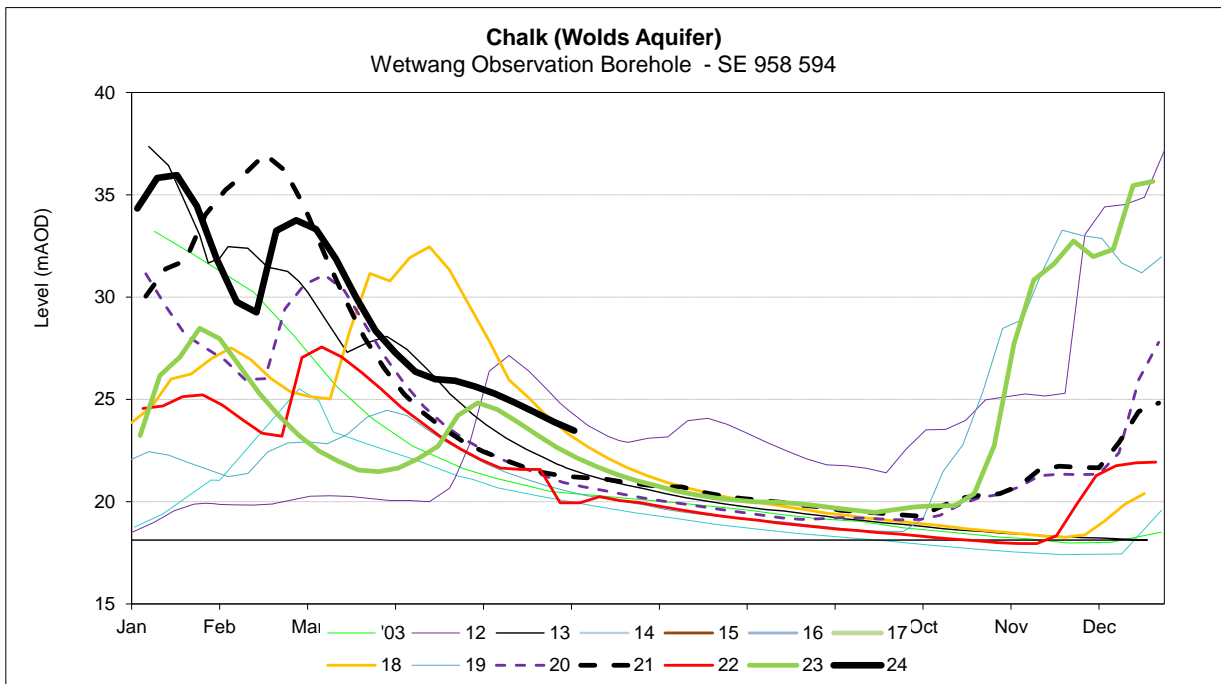
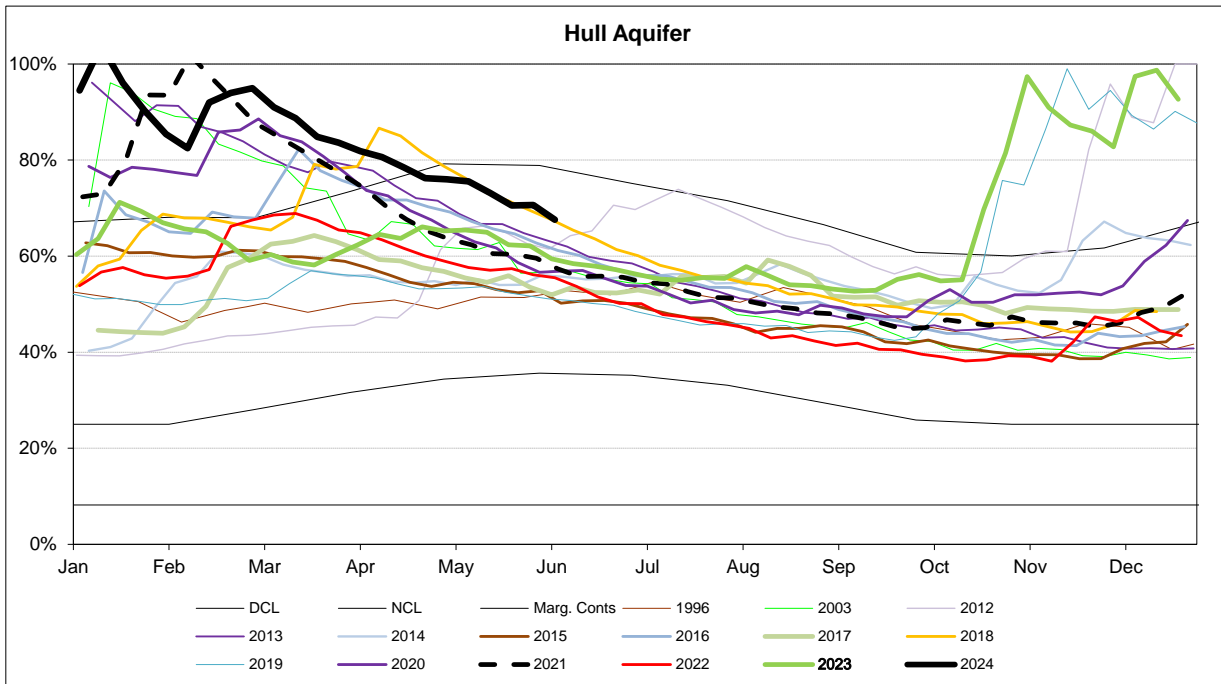
MONTHLY DEMANDS FROM WIS REPORT

Apr-24	163	65	40	73	158	51	279	69	143	146	36	47	1270
May-24	167	65	41	73	163	52	280	71	141	146	36	47	1281

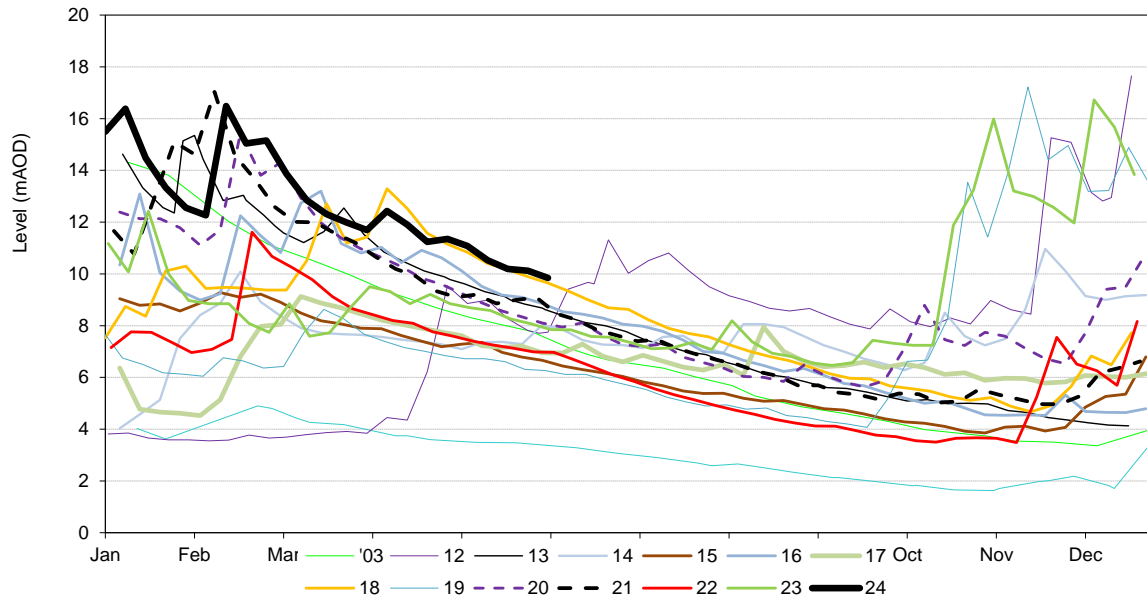
NB Current month demands include some estimates for minor sources and are not exactly comparable with previous months' figures.



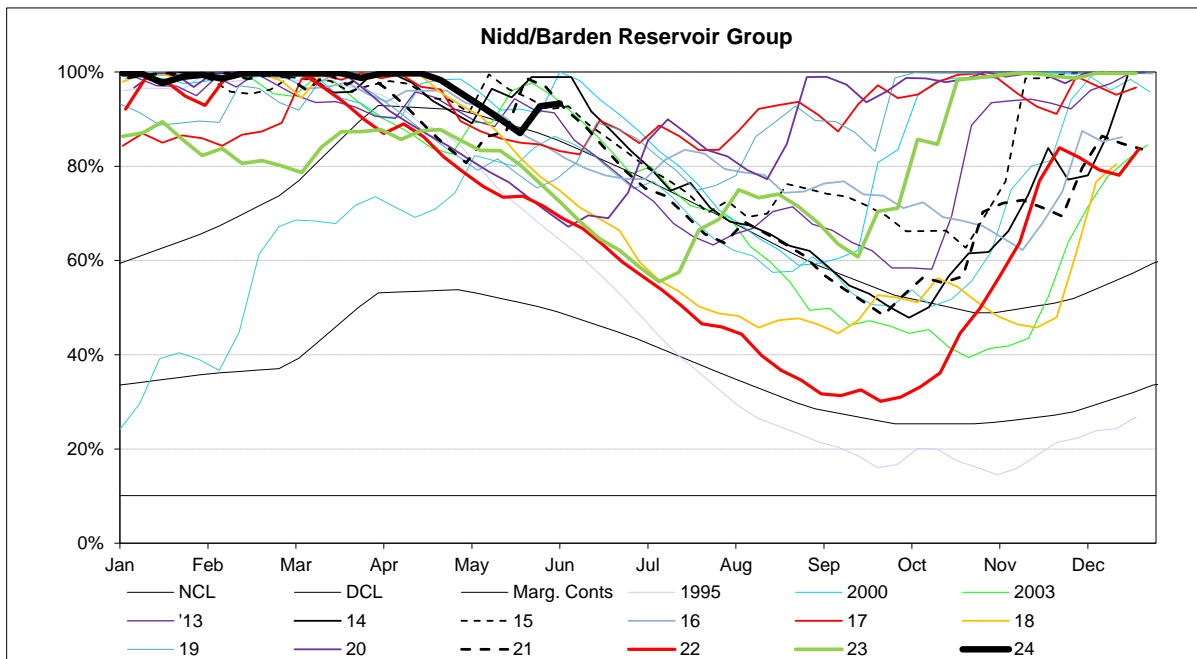
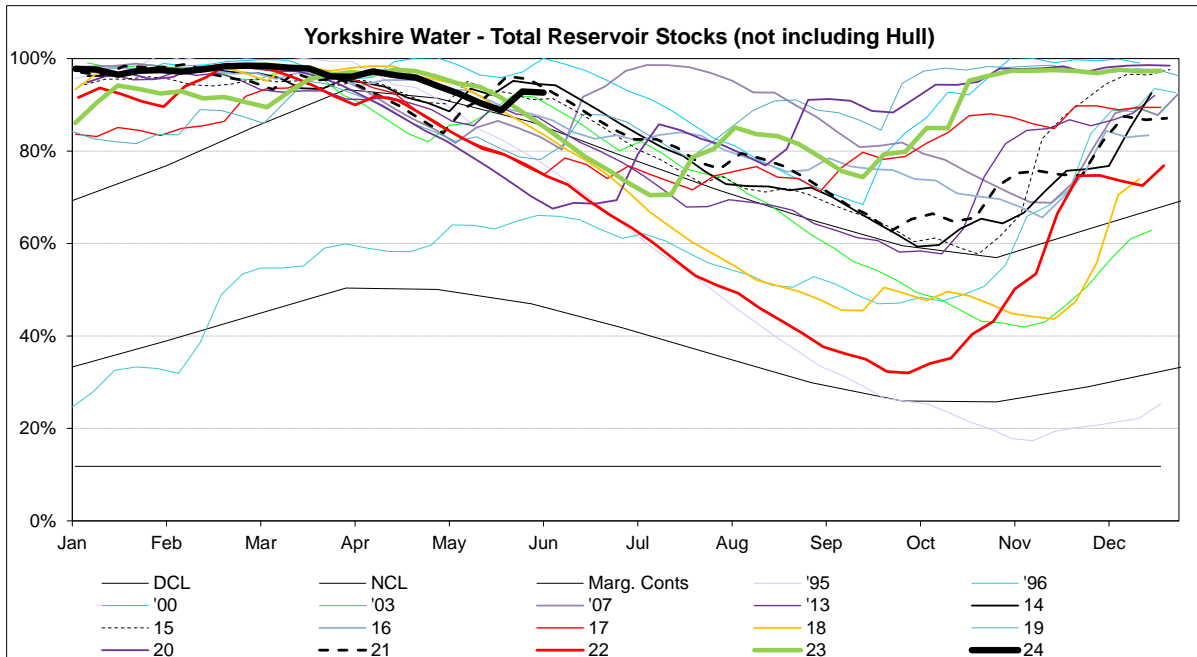


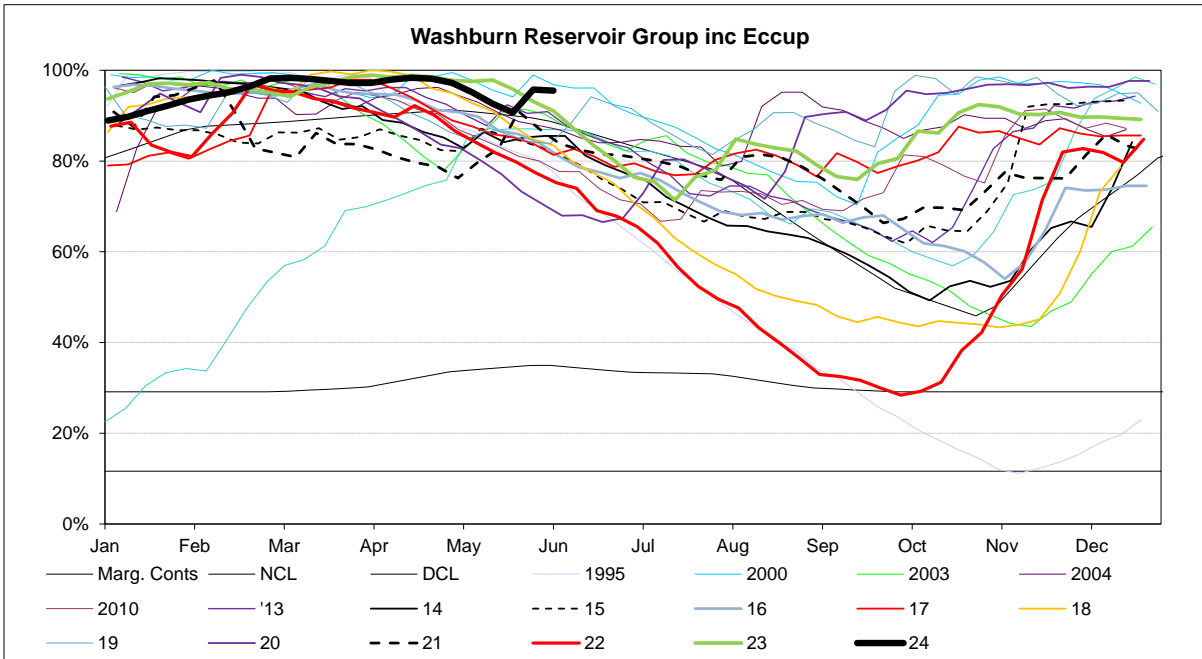
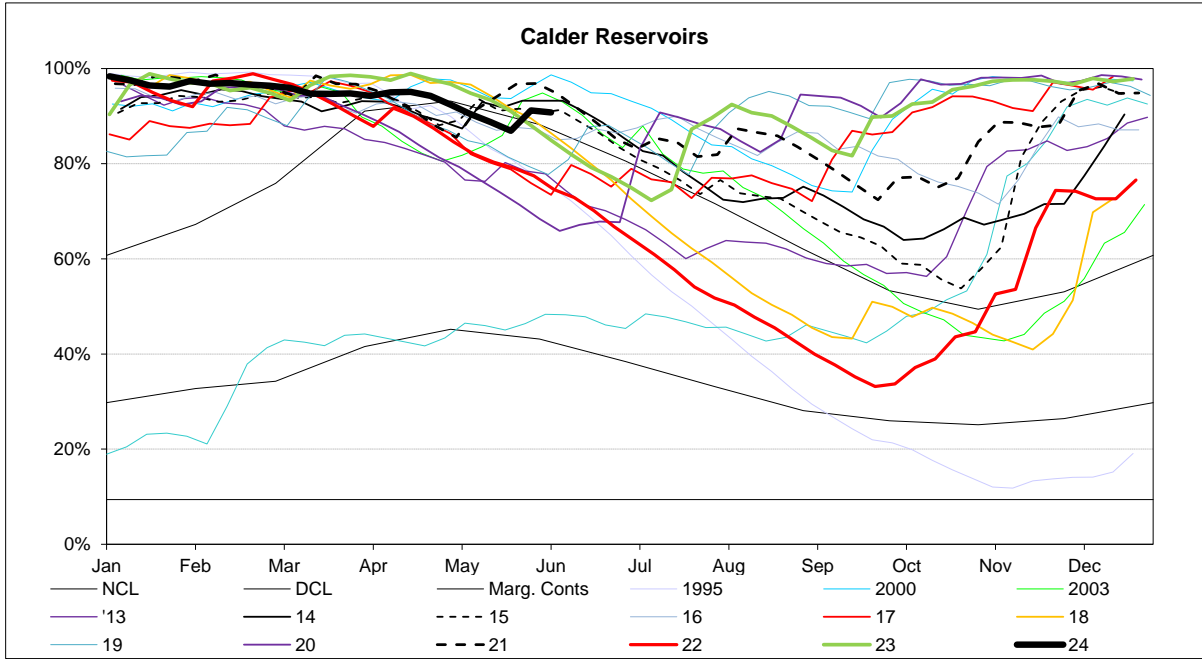


Chalk (Hull Aquifer)
Westwood Observation Borehole - TA 020 399

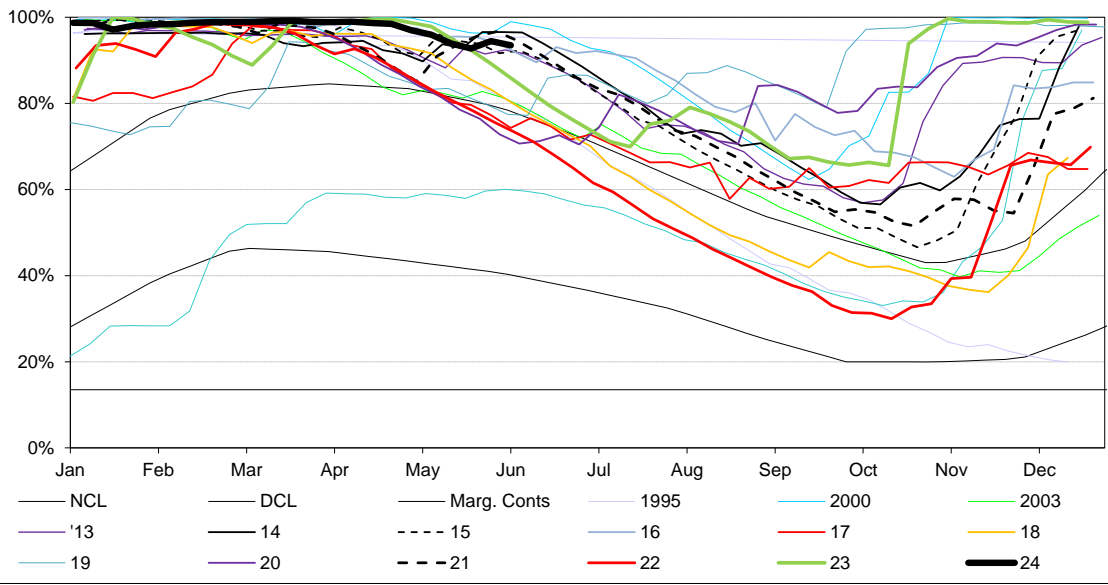


RESERVOIR STOCKS	03/06/2024		% Change	Planned Reservoir Safety Work	Required Drawdown & Duration	
Reservoir Group	% Stocks @	% Change	last week	Reason for Drawdown		
Calderdale (excl Withens Clough)	76.0%	-2.2%	3.6%	Access for Tunnel Grouting at Upper IRE Access for Tunnel Grouting at Middle IRE Increase Drawdown Capacity Increase Drawdown Capacity	Apr 24 - Oct 24 Apr 24 - Oct 24 Feb 24 - May 24 June 24 - Oct 24	87.0% 28.0% 62.0% 21.0%
Boothwood/Ryburn (incl WC)	95.6%	0.3%	3.8%			
(Gorpley)	72.8%	-2.5%	3.2%			
Huddersfield	95.9%	0.2%	4.9%			
Brownhill/Digley	95.8%	-0.1%	5.1%			
Walshaw Dean Middle	93.7%	-5.9%	8.2%			
Walshaw Dean Lower	46.7%	-13.7%	30.6%			
Widdop	20.1%	-1.6%	-1.2%			
Widdop	20.1%	-1.6%	-1.2%			
Calder Area Total	90.7%	-0.4%	4.2%			
Nidd/Barden/Chelker	93.3%	0.6%	5.7%	Embankment Stability Works Drawdown Improvements Pipework modifications Inspection Vegetation Removal Pointing Repair Ground Anchor	Jan 23 - Dec 24 May 23 - June 24 May 24 - June 24 May 24 - June 24 TBC TBC TBC	86.0% 53.0% 72.0% 92.0% 92.0% 78.0% 87.6%
Grimwith	97.0%	2.4%	3.0%			
Worth Valley	99.9%	-0.1%	3.3%			
March Ghyll	85.5%	-11.7%	11.7%			
Gouthwaite	50.6%	-9.4%	11.9%			
Elslack	61.5%	-1.9%	5.1%			
Hewenden	100.0%	0.0%	0.0%			
Thornton Moor	100.0%	0.0%	2.6%			
Chelker	92.6%	-0.5%	0.0%			
Ponden	100.0%	0.0%	0.0%			
North West Area Total	95.7%	1.4%	4.2%			
Washburn/Eccup Resrs.	95.5%	-0.2%	5.1%	Outlet Channel Repairs Bridge Repairs	Dates tbc Dates tbc	93.0% TBC
Thornton Steward	92.9%	-4.3%	0.0%			
Leighton/Roundhill	100.0%	0.0%	5.9%			
Haverah Park	98.9%	-1.1%	18.4%			
Swinsty	96.9%	-3.1%	22.0%			
Thruscross	100.0%	0.0%	0.0%			
North Area Total	96.2%	-0.3%	6.4%			
Don Valley & Winscar	92.4%	-0.9%	1.3%	Damage to Overflow Channel Damage to Overflow Channel Install Overflow Debris Barrier Overflow Investigation	Nov 23 - Aug 24 Nov 23 - Aug 24 June 24 - Aug 24 Dates tbc	98.0% 89.0% 95.0% 95.0%
Rivelin Valley	96.8%	-1.8%	5.4%			
Little Don	88.5%	-1.7%	2.0%			
Ewden Valley	94.8%	-0.8%	3.4%			
Loxley Valley	98.4%	-0.6%	1.6%			
Redmires	85.2%	0.0%	2.9%			
Redmires Upper	91.5%	-0.5%	0.3%			
Redmires Middle	75.8%	-1.9%	8.1%			
Broomhead	94.8%	-0.8%	3.4%			
Strines	100.0%	0.0%	0.0%			
South Area Total	92.7%	-1.0%	2.3%			
Tophill Low	0.0%	-1.3%	-1.9%			
Hull Aquifer	67.6%	-3.0%	0.1%			
East Area Total	68.9%	-2.9%	-0.1%			
Regional Total (DCP) (inc East Area)	90.9%	-0.3%	3.5%			
YORKSHIRE TOTAL (Supply) (not inc East Area)	93.8%	0.0%	4.0%			

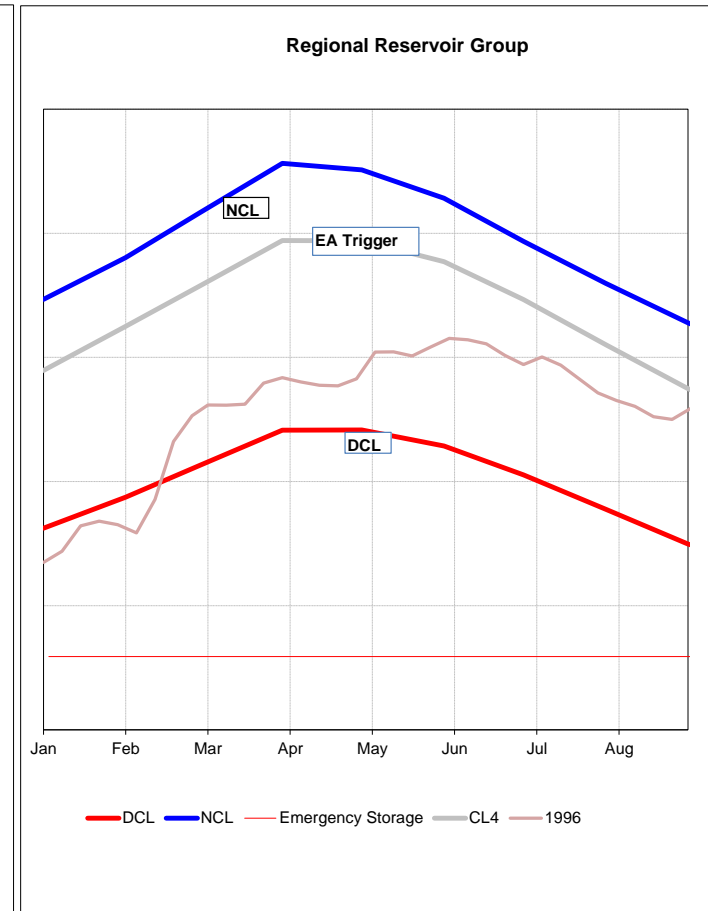
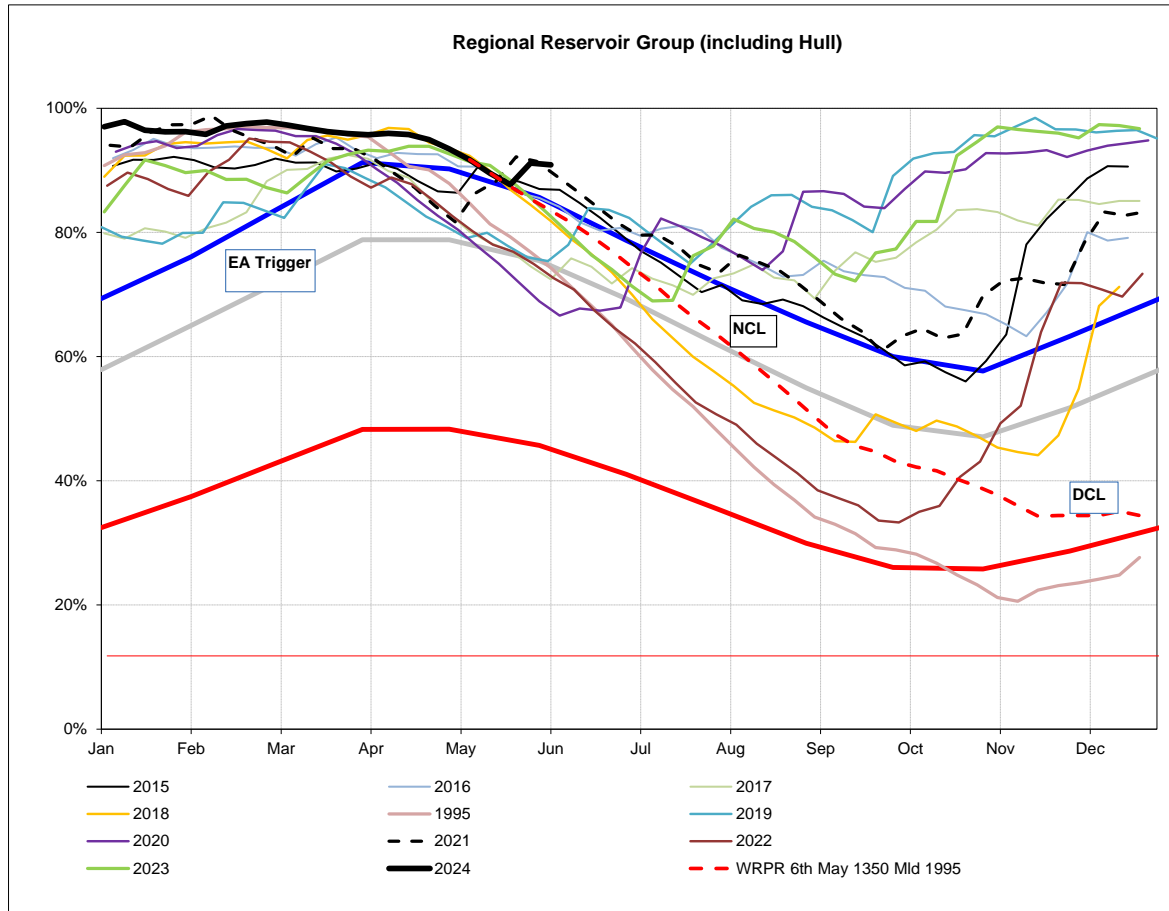




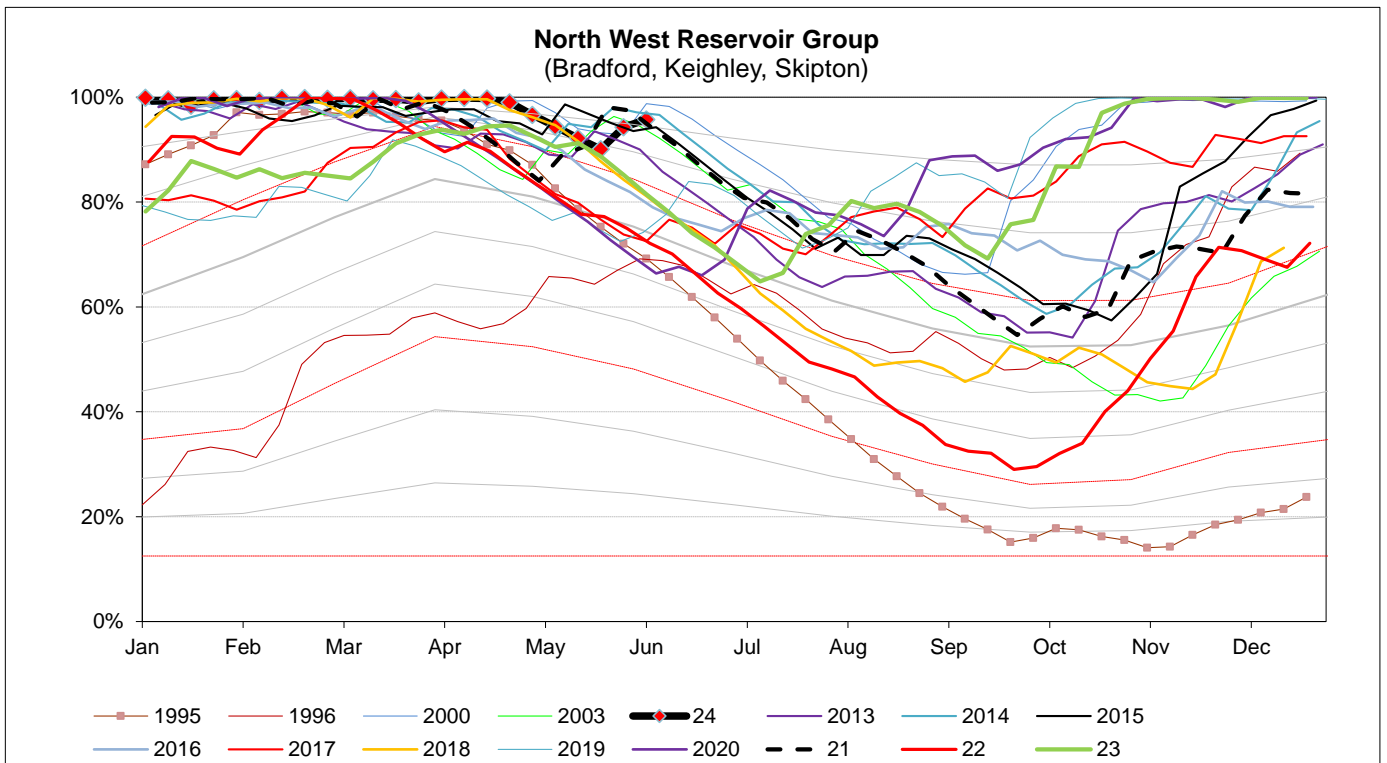
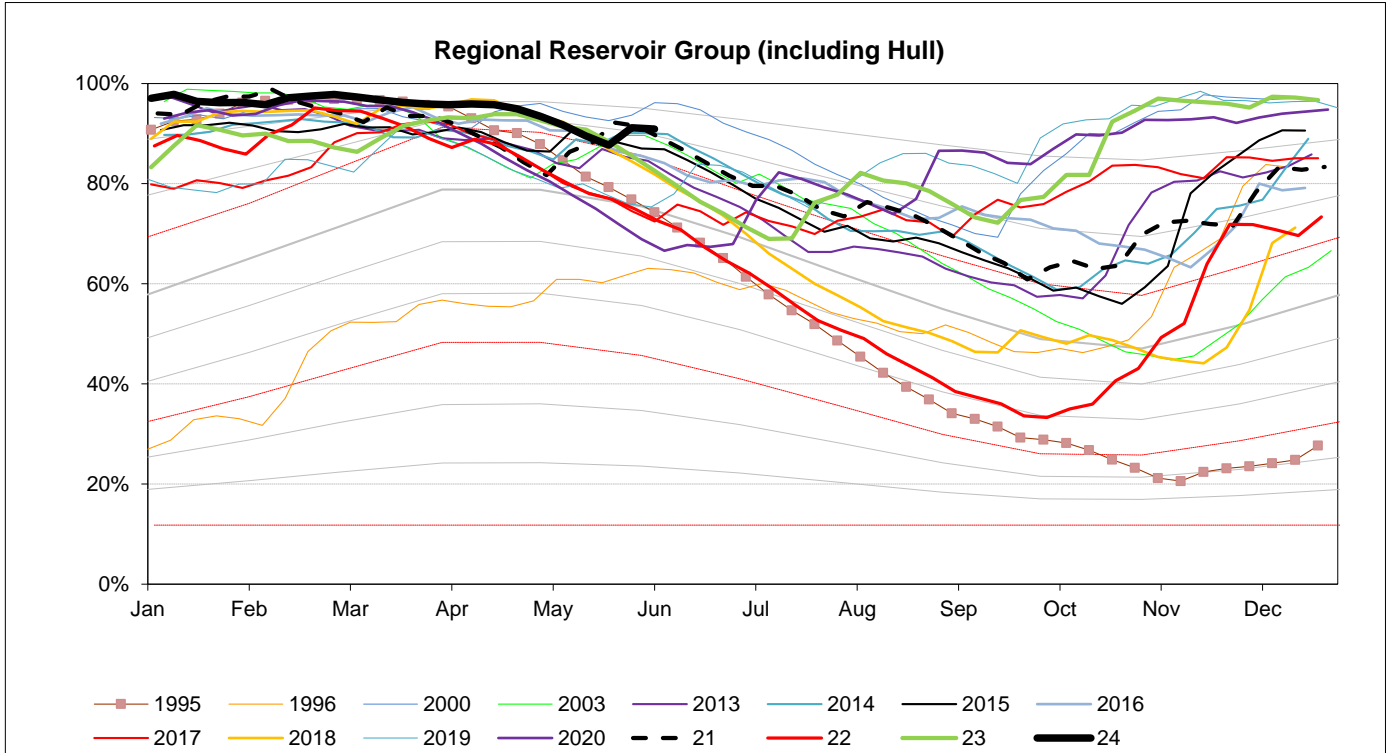
Sheffield & Barnsley Reservoirs



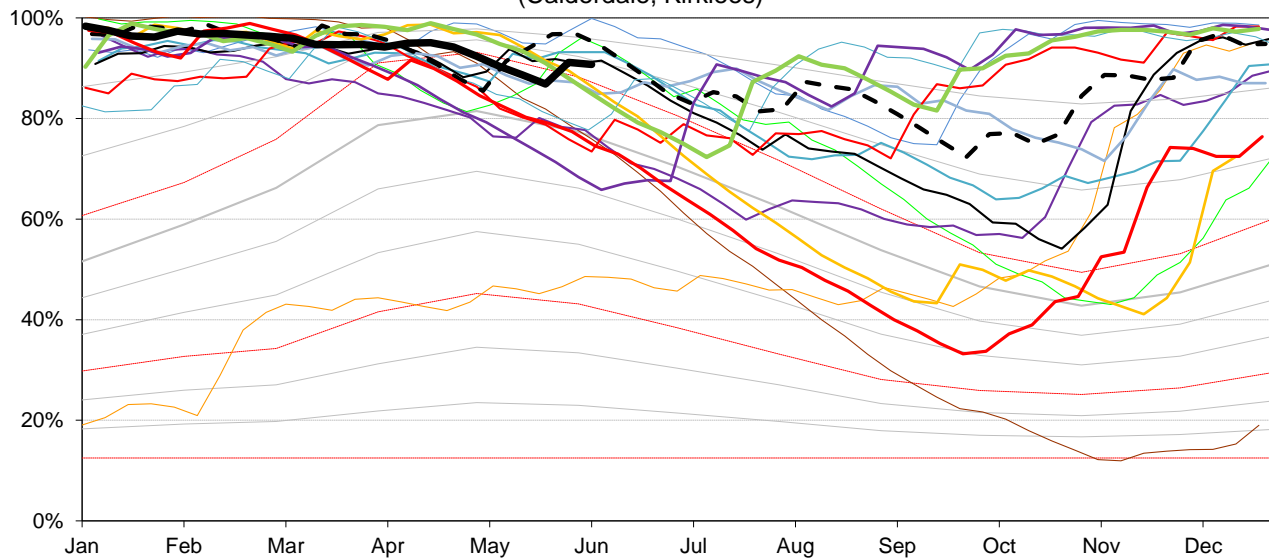
EA Stocks Report	03/06/2024						
	MI	%	% change		MI	%	% change
South West Area Supply Reservoirs				South Area Supply Reservoirs			
Calderdale Group	8464	76.0%	-2.2%	Don Valley	1931	92.9%	-1.5%
Huddersfield Group	13532	95.8%	0.1%	Little Don	6519	88.5%	-1.7%
Brownhill/Digley excl Holmestye:	5370	95.6%	-0.1%	Ewden Valley	4678	94.8%	-0.8%
Boothwood/Ryburn	11169	95.4%	0.1%	Loxley Valley	6764	98.4%	-0.6%
South West Reservoir Group	39962	90.7%	-0.4%	Rivelin	789	96.8%	-1.8%
				Redmires	2368	85.2%	0.0%
Bradford Area Supply Reservoirs				South Reservoir Group	23050	92.7%	-1.0%
Gouthwaite	2940	50.6%	-9.4%	Winscar Group	8665	92%	-0.9%
Grimwith	21103	97.0%	2.4%	Compensation Reservoirs			
Nidd/Barden/Chelker	17894	93.3%	0.6%	Scout Dike	609	87.8%	-3.0%
Rombalds/Thornton Group	2178	97.6%	2.9%	Underbank	2819	98.3%	-0.4%
Skipton Area Supply Reservoirs				Morehall	1925	88.6%	-2.3%
Embsay	701	97.0%	-3.0%	Damflask	4971	97.4%	-0.4%
Worth Valley Group	3310	99.9%	-0.1%				
North West Reservoir Group	45187	95.7%	1.4%	North Area Supply Reservoirs			
Compensation inc Silsden	2344	99.6%	-0.3%	Washburn	22320	95.5%	-0.2%
Gouthwaite	2940	50.6%	-9.4%	Eccup	6103	87.1%	1.2%
March Ghyll & Elslack Reservoirs excluded for consistency with stocks predictions in WRAPSIM				Leighton/Roundhill	7401	100.0%	0.0%
East Area Supply Reservoirs				Haverah Park	991	98.9%	-1.1%
Tophill Low	1418	84.3%	-1.3%	Lumley Moor	381	100.0%	1.7%
Hull Aquifer	12841	67.6%	-3.0%	Thornton Steward	881	92.9%	-4.3%
East Reservoir Group	14259	68.9%	-2.9%	North Reservoir Group	31974	96.2%	-0.3%
				Lindley Wood Compensation	2920	100.0%	4.4%
				Regional Reservoir Group	163096	90.9%	-0.3%
				(sum of South West, North West, East, South, North & Winscar Reservoirs)			



Triggers	
EA early warning (CL4)	Water resources to advise EA on production
Hosepipe Restrictions	When projected falling stocks fall below DCL
Drought Orders	When stocks are below DCL.

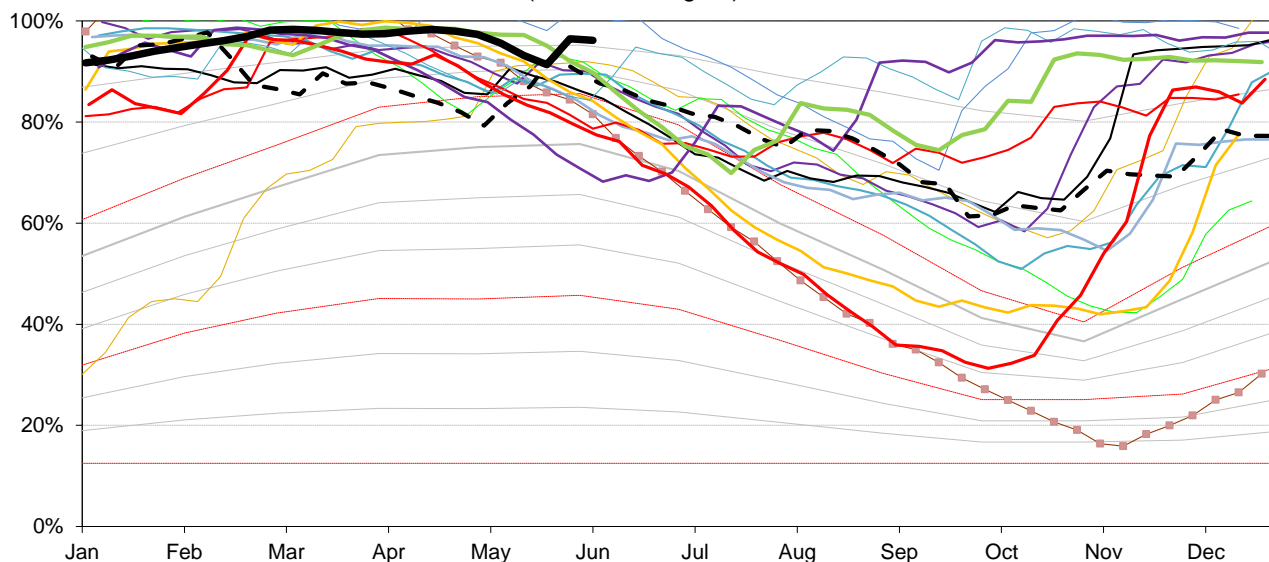


South West Reservoir Group (Calderdale, Kirklees)



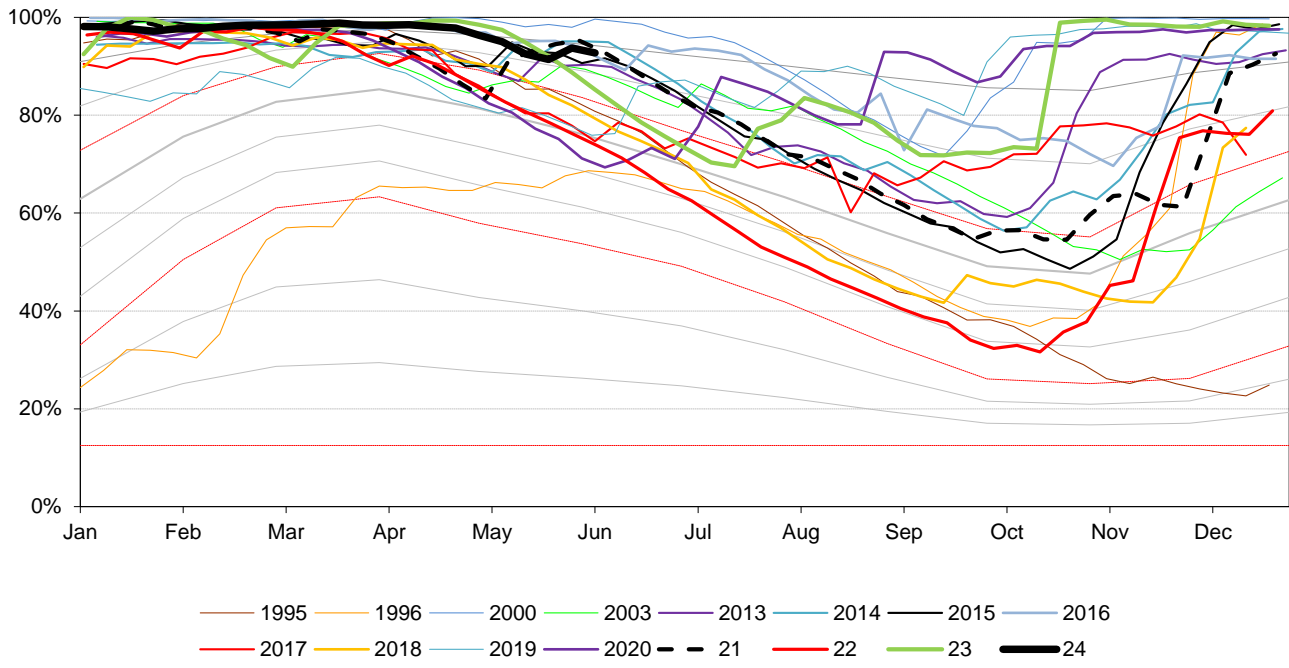
— 1995 — 1996 — 2000 — 2003 — 2013 — 2014 — 2015 — 2016
 — 2017 — 2018 — 2019 — 2020 - - 21 — 22 — 23 — 24

North Reservoir Group (Leeds, Harrogate)

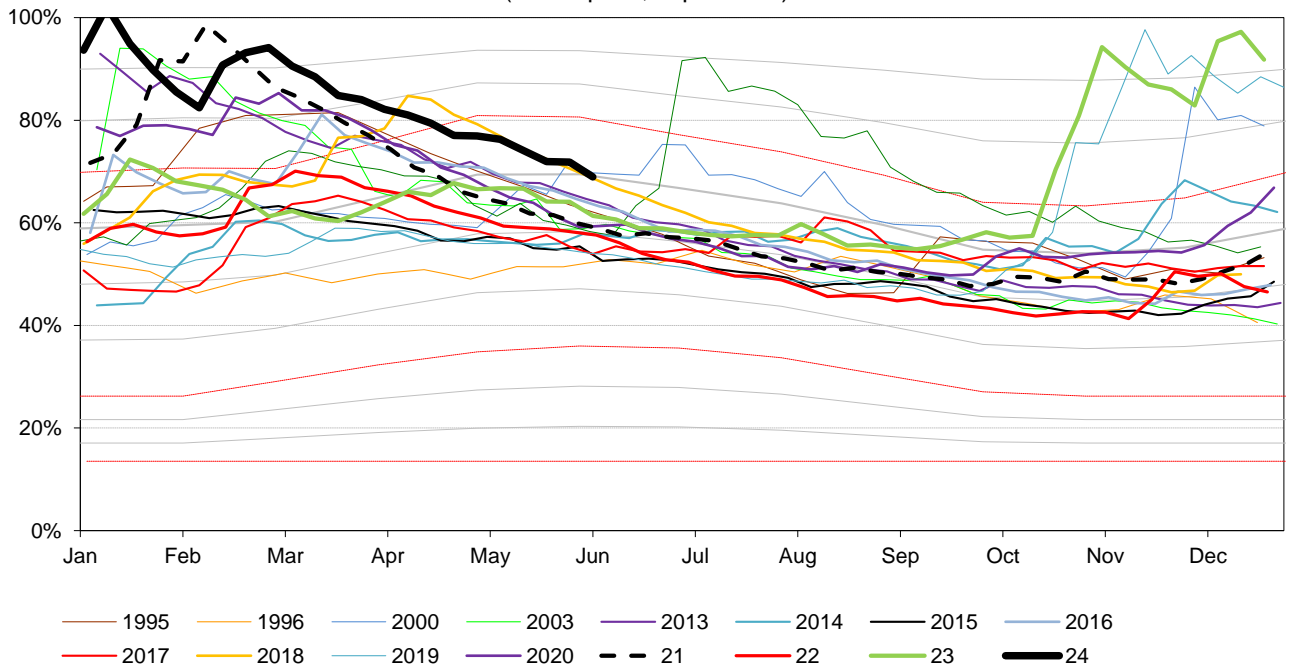


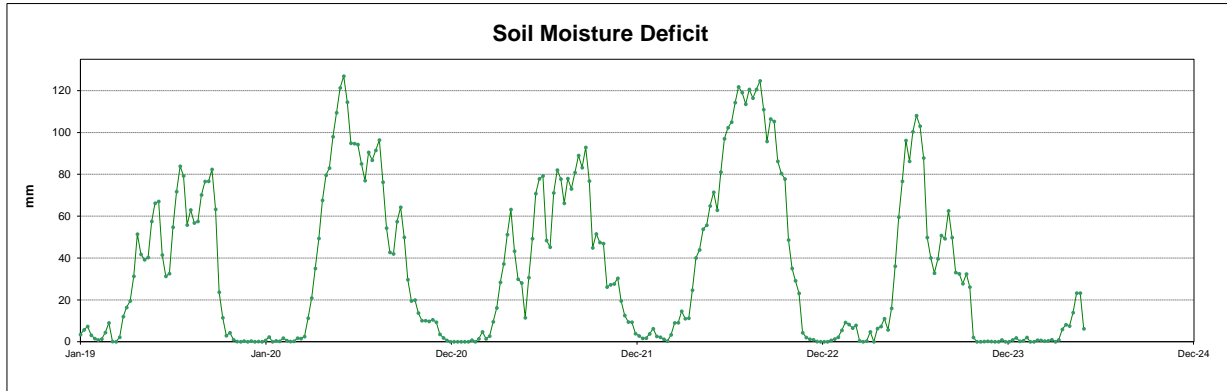
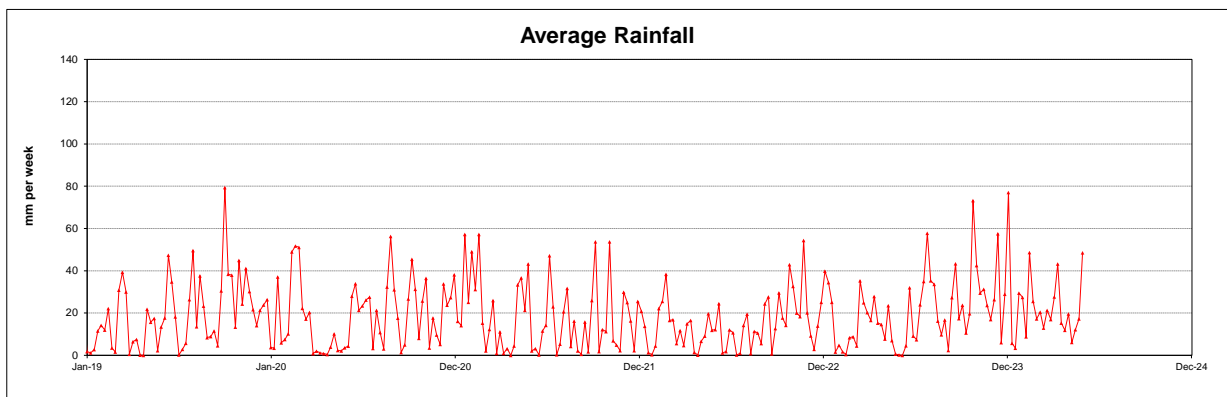
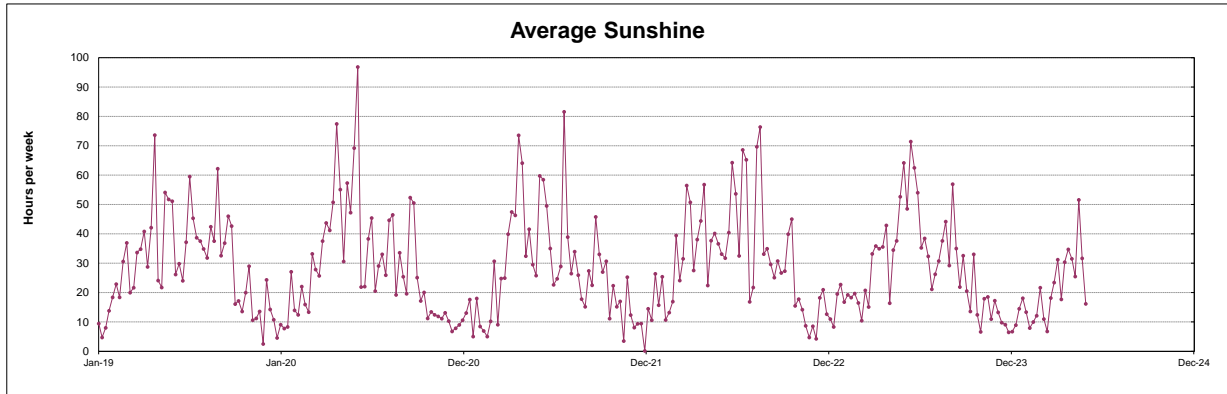
— 1995 — 1996 — 2000 — 2003 — 2013 — 2014 — 2015 — 2016
 — 2017 — 2018 — 2019 — 2020 - - 21 — 22 — 23 — 24

South Reservoir Group
(Sheffield, Barnsley)



East Reservoir Group
(Hull Aquifer, Tophill Low)





ABSTRACTIONS

27 May 2024

This page will normally be updated monthly (approx mid month).
 This data may be subject to change following routine validation checks.
 Where showing a negative value, this is normal at certain sources, due to the imports of water into that source being greater than the volumes abstracted.
 Annual licences run from April to March.

Units in MI

Serial No	Source	Last calendar month MI	Year to date MI	Run date	
				Annual Limit	% of Annual Limit
02/27/023/332	Ainderby Steeple Boreholes	131	1470	1760	84%
03/28/083/010	Armthorpe Boreholes	238	2569	3319	77%
03/28/083/012	Austerfield Boreholes	249	3520	11615	30%
02/27/022/020	Aysgarth & Newbiggin Springs	13	173	341	51%
02/27/012/035	Baitings, Ryburn & Blackhouse reservoirs	459	4950	20457	24%
02/27/023/032	Bellerby Borehole and springs near Bellerby	72	856	1250	68%
02/27/022/209	Birk Gill & River Burn	617	4163	6400	65%
02/27/012/254	Boothwood Reservoir & associated catchwaters	307	2936	20457	14%
02/27/10/112	Boshaw Whams Reservoir	0	0	55	0%
03/28/083/105	Boston Park Boreholes	188	2287	3318	69%
02/27/024/305	Brayton Barff Boreholes	0	0	2250	0%
02/26/030/002	Bridlington	147	1689	2500	68%
02/27/005/031	Broomhead Reservoir	1050	11717	12410	94%
02/26/030/004	Burton Agnes	79	904	1000	90%
02/27/018/080	Carlton Hanger Lane Boreholes	266	2842	3500	81%
02/27/018/079	Carlton Mill Lane Boreholes	162	1865	3800	49%
02/27/019/009	Carr Bottom Reservoir, Burley Woodhead	0	80	409	20%
02/27/023/340	Catterick Boreholes	211	2486	2920	85%
02/27/027/136	Cayton Carr Lane Boreholes	165	1872	3928	48%
02/27/027/163	Cayton Station Road Borehole	36	563	2646	21%
02/27/019/137	Chelker Reservoir	331	3641	5000	73%
02/27/023/031	Coalsgarth Springs	3	52	750	7%
02/27/011/064	Colne Valley Catchwaters	123	2126	5840	36%
02/26/032/126	Cottingham Well	619	7441	18184	41%
02/27/018/081	Cowick Boreholes	372	4340	5250	83%
02/27/023/046	Cranehow & Downholme Springs	0	0	318	0%
02/27/023/030	Crumma, Newsham & Gandale Springs	74	972	1364	71%
02/27/005/030	Dale Dyke & Agden Reservoirs	873	10587	12410	85%
02/27/012/261	Dean Head & Scammonden	61	1047	3650	29%
02/27/19/121	Dib Spring, Hawkswick	0	0	27	0%
02/26/032/126	Dunswell Well	466	8377	16593	50%
NE/27/025/021	East Ness Boreholes	285	3342	5680	59%
02/26/031/087	Elmswell Wold Borehole	0	133	1273	10%
02/27/015/045	Embsay Reservoir	273	2141	1846	116%
02/27/016/196	Esholt Sewage Treatment Works	0	0	88	0%
02/26/032/124	Etton Boreholes	113	1748	5100	34%
03/28/083/012	Finningley Boreholes	326	3465	6780	51%
02/27/022/328	Fossdale (High Shaw) Springs	8	114	227	50%
02/27/018/120	Goosehouse Boreholes	267	3332	3500	95%
02/27/012/043	Gorpley Reservoir	0	0	1823	0%
02/27/016/022	Graincliffe Reservoir & Morton Springs	271	2129	2728	78%
02/27/012/037	Green Withens Ringstone Res & catchwater	508	5070	20457	25%
02/27/019/051	Greenhow Tunnel (Nidd Aqueduct) Dale Head Intake	0	0	214	0%
02/27/019/052	Greenhow Tunnel (Nidd Aqueduct) No.2 Access Shaft	0	0	6819	0%
NE/27/019/005	Grimwith Reservoir to Nidd Aqueduct	341	1466	3650	40%
02/26/030/003	Haisthorpe Boreholes	360	4496	5000	90%
03/28/083/012	Hatfield Boreholes	122	1877	3319	57%
03/28/083/100	Hatfield Woodhouse Boreholes	0	0	3320	0%
02/27/029/010	Hazel Head Springs	52	521	1162	45%
02/27/012/041	Hebden, Luddenden & Hebble Valley Resrs	1171	12832	15695	82%
02/27/018/077	Heck Boreholes	80	1258	2489	51%
03/28/083/012	Highfield Lane Boreholes	371	4619	11615	40%
02/27/023/685	Hollin Hill Borehole	0	13	45	30%
02/27/010/063	Holmestyes & Digley Reservoirs	286	3573	5840	61%
02/27/22/024	Horsehouse Spring, leyburn	0	0	33	0%
02/27/027/002	Howe Hill Well	79	907	1014	89%
02/26/031/006	Hutton Cranswick	41	489	796	61%
02/27/005/012	Ingbirchworth Reservoir & Annat Royd Intake	211	1593	3637	44%
02/27/005/202	Ingbirchworth South Borehole	4	51	132	38%
02/27/027/058	Irton	438	5280	8215	64%
02/27/21/015	John O'Gaunts and Beaverdyke Reservoirs	0	0	1909	0%
02/27/014/010	Keighley Moor Reservoir	59	528	6951	8%
02/27/025/128	Keld Head Boreholes	163	1987	3319	60%
02/26/032/126	Keldgate Boreholes	135	1639	5819	28%
02/26/031/002	Kilham	33	211	1818	12%
02/27/005/032	Langsett Reservoir	1018	12627	17155	74%
02/27/022/210	Leighton Reservoir & Spruce Gill stream intake	366	6638	13184	50%
03/28/083/107	Littleworth Borehole	0	0	1659	0%
02/27/028/270	Loftsome Bridge ASR Borehole No.1	0	0	750	0%
02/27/014/009	Lower Laithe Reservoir	283	2640	6951	38%
02/27/005/011	Midhope Reservoir & Knoll Brook Intake	347	3348	17155	20%
02/26/034/006	North Newbald	0	0	1137	0%
03/28/083/012	Nutwell Boreholes	261	2944	4983	59%
02/27/019/006	Panorama, Hilltop & Old Reservoirs & Springs	12	102	1000	10%
02/27/018/078	Pollington Boreholes	210	2900	5000	58%
02/27/014/058	Ponden Reservoir	15	751	6951	11%
02/27/016/023	Reva Reservoir, Hawkesworth	201	1179	1364	86%

02/27/005/029	Rivelin and Redmires Reservoirs	82	2661	8030	33%
02/27/028/017	River Derwent at Elvington	4024	50822	75000	68%
02/27/028/083	River Derwent at Loftsme Bridge	2021	26731	30400	88%
02/27/029/012	River Esk	249	3115	7823	40%
02/26/031/047	River Hull & West Beck	1210	16787	25000	67%
02/26/032/194	River Hull for Sewer Cleaning	0	0	91	0%
02/27/024/078	River Ouse at Acomb	808	9717	35000	28%
02/27/024/158	River Ouse at Moor Monkton	2669	30185	73000	41%
02/27/022/214	River Ure at Kilgram Bridge	207	3482	15000	23%
02/27/020/196	River Wharfe at Arthington	4	2941	19009	15%
02/27/019/129	River Wharfe at Lobwood	1266	18712	23742	79%
03/28/083/012	Rossington Bridge Boreholes	0	0	5172	0%
02/27/022/027	Roundhill and Lumley Moor Reservoirs	2	8	3500	0%
02/27/005/013	Royd Moor Reservoir & Intakes	106	1272	2955	43%
02/27/021/016	Scargill Reservoir	61	754	1932	39%
02/27/021/092	Scarhouse & Angram Resvrs with tunnel & catchwater	3327	36218	38164	95%
02/27/15/149	Silsden Beck, Stilling-Basin at foot of Silsden Reservoir Embankment	0	0	10	0%
02/26/032/126	Springhead Well	928	8633	13638	63%
02/27/022/021	Stalling Busk & Marsett Springs	0	0	33	0%
02/27/022/208	Stock Beck, Carlesmoor Beck & River Laver	0	628	3500	18%
02/27/023/684	Stubbing Nook Borehole	0	52	135	39%
03/28/083/012	Thornham Boreholes	308	3495	6213	56%
02/27/016/160	Thornton Moor & Stubden Reservoirs	5	1087	6214	17%
02/27/012/038	Turvin Clough	0	483	4014	12%
02/27/019/054	Upper & Lower Barden Reservoirs	446	4744	14223	33%
02/27/020/088	Washburn Valley Reservoirs	2661	30803	43800	70%
02/27/015/041	Watersheddles Reservoir	142	1530	6951	22%
02/27/016/021	Weecher Reservoir	5	149	909	16%
02/27/011/065	Wessenden Valley, Blackmoorfoot & Deerhill	876	9665	12410	78%
02/27/023/034	West Stonesdale (Garland Hill) Springs	0	0	282	0%
02/27/015/042	Whinney Gill & Jenny Gill Reservoirs	16	118	377	31%
02/27/005/026	Winscar, U & L Windleden, Harden & Snailsden	387	5514	10140	54%
02/27/012/036	Withens Clough Resr & Catchwater	249	2166	3319	65%
02/27/010/011	Yateholme, Riding Wood, Ramsden & Brownhill	308	2830	6820	41%

	Last calendar month MI	Year to date MI	Annual Limit	% of Annual Limit
Licences with Aggregated Annual Quantities				
Baitings, Ryburn, Boothwood, Green Withens	1274	12956	20457	63%
Langsett, Midhope	1365	15975	17155	93%
Worth Valley	499	5449	6951	78%
River Derwent (Elvington, Loftsme)	6045	77553	94841	82%
Cayton, Irton	638	7714	10700	72%
Selby Boreholes	1355	16537	25283	65%
Doncaster Wellfield	2064	24776	30295	82%
Doncaster Sub Group	1637	19920	26049	76%
Austerfield & Highfield Lane	620	8139	9956	82%
Hull Groundwater Sources	2149	26091	32850	79%

Third Party Agreements (Calendar Year)		Units in MI		Run date	01-Apr-24
Source	Last calendar month MI	Year to date MI	Annual Limit		% of Annual Limit
CRT, Hudds Narrow Canal	18	73	1273		6%
Severn Trent Ladybower Reservoir	2120	5929	21550		28%

		Latest Reading date:		02-Apr-24
	Year to date MI	Annual Limit	% of Annual Limit	
Winscar To Langsett Transfer Usage	1349	2482	54%	