

## WATER SITUATION REPORT

---

### 1. Rainfall

The Yorkshire Region has received 102.2% of LTA for July

### 2. Reservoirs (surface water supply reservoirs not including Hull)

Over the Past Week Our Reservoir Stocks Have Decreased By -1.78% To 47.4%

### 3. Rivers

Some of Our Rivers are Below Critical Level

### 4. Demand

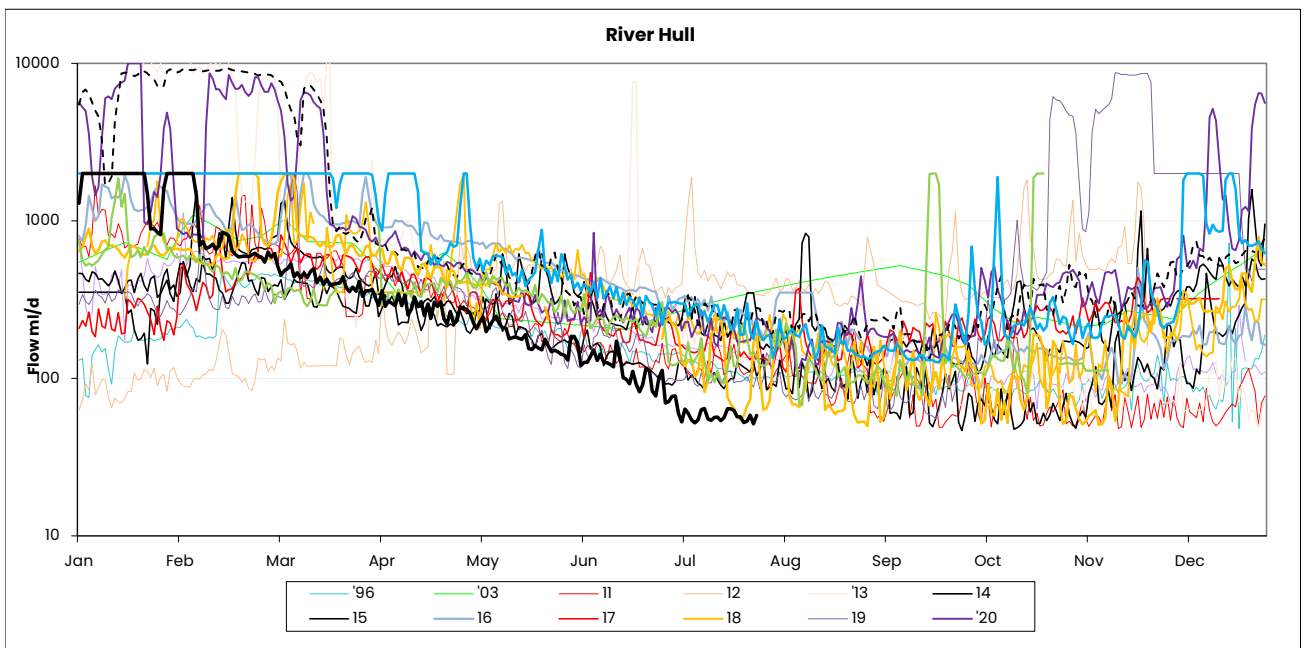
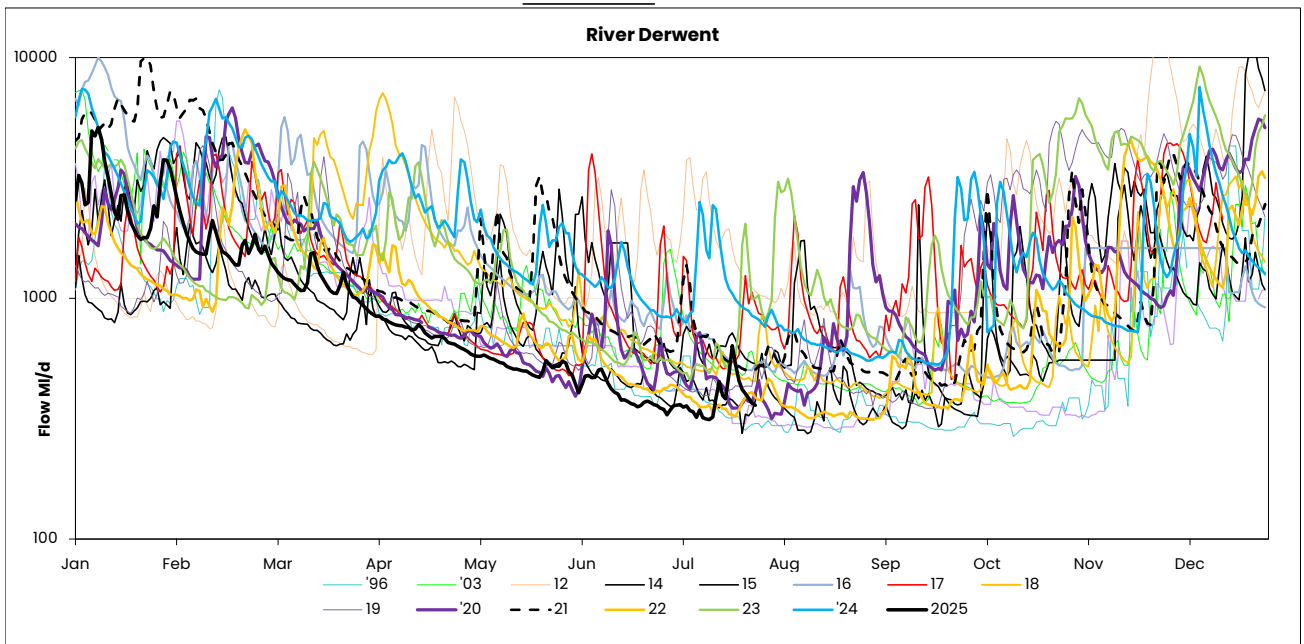
Regional Demand = 1290.1 MI/d (including York)

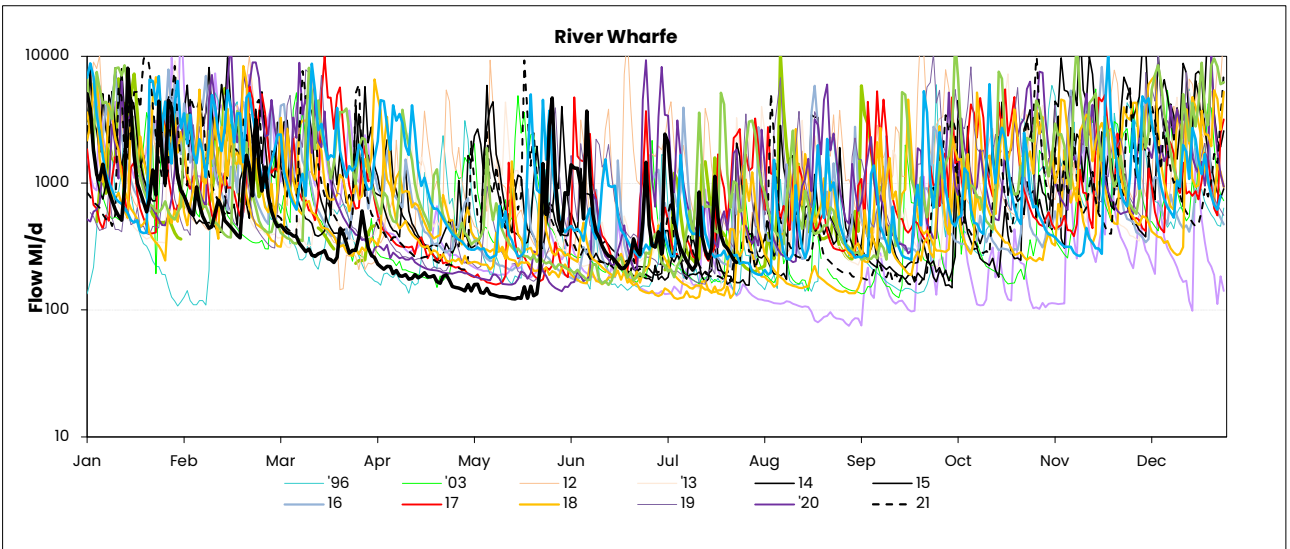
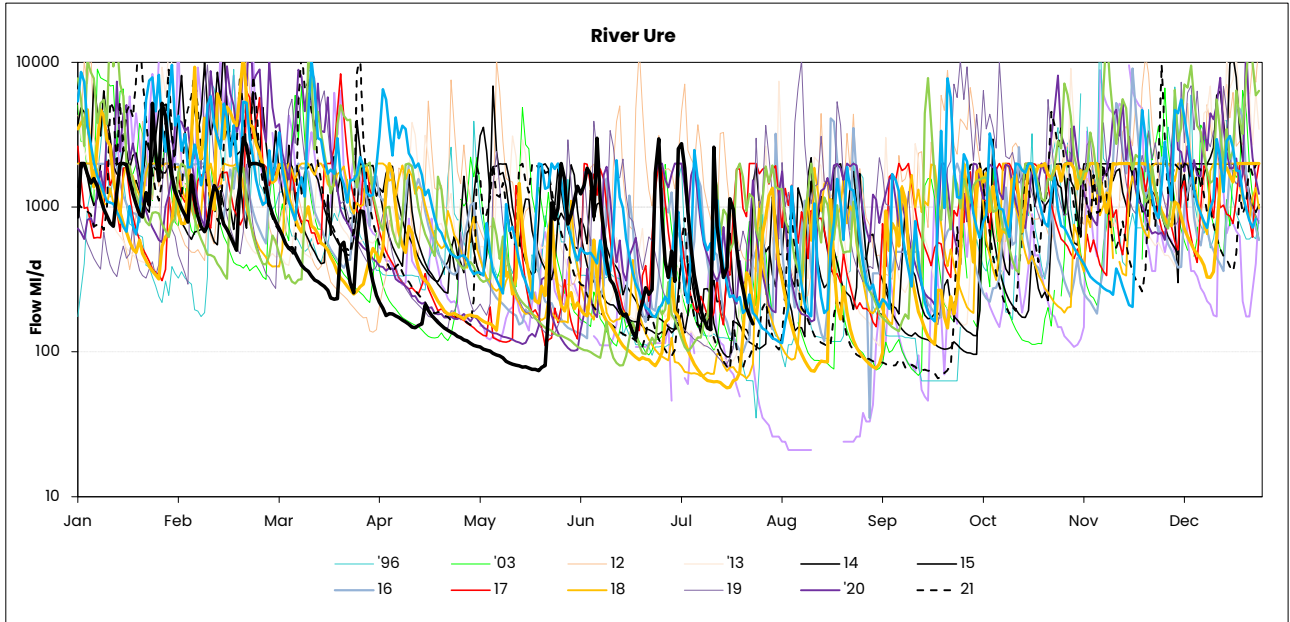
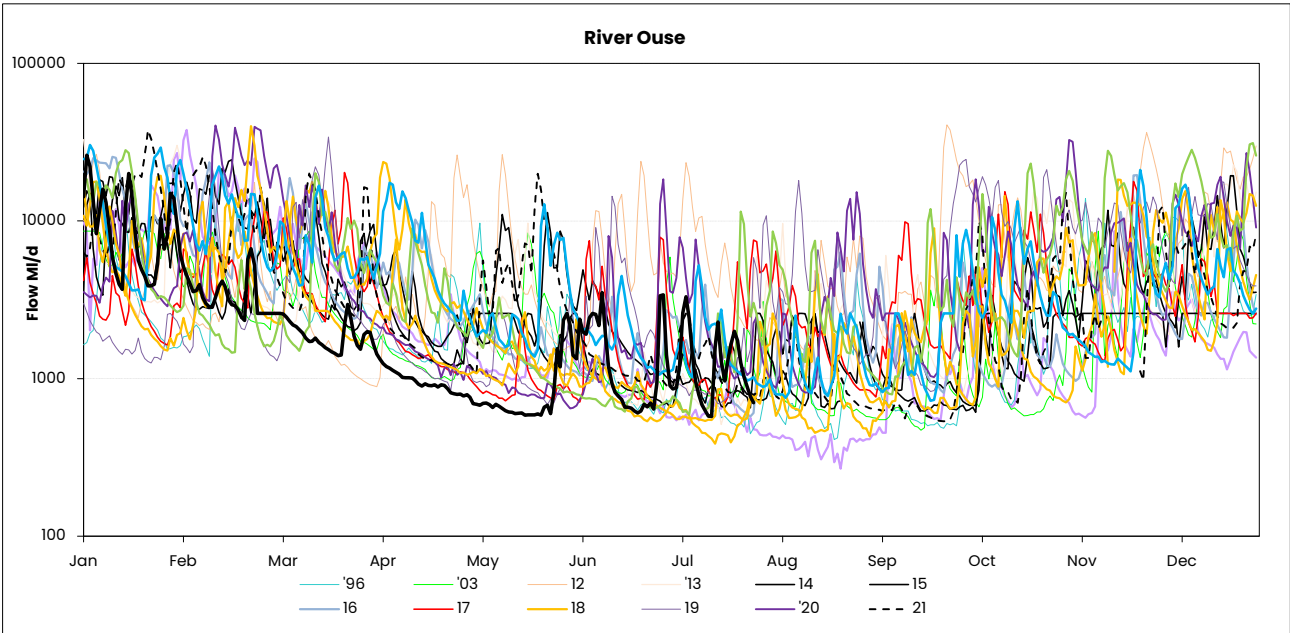
### 5. Comments

**RIVER FLOWS**

**28 July 2025**

	Mon 28-Jul	Mon 21-Jul	Mon 14-Jul	Mon 07-Jul	Critical flow bands
Derwent	359	635	313	357	305
Hull (using gauged (residual flows) only from 2	58	63	54	60	45 / 159 / 227
Ouse	702	1641	578	3304	400 / 650 / 1000
Ure	156	1144	146	1865	50 / 163 / 300
Wharfe	✗ 236	✓ 1133	✗ 206	✓ 1043	252 / 389 / 488 / 580





# RAINFALL

28 July 2025

Yorkshire Region (Met Office)				England/Wales	
Month	mm	LTA	LTA(%)	mm	LTA(%)
December	108	90	120%	97	93%
January	82	80	103%	100	108%
February	37	70	53%	57	78%
March	26	60	43%	16	25%
April	11	58	19%	34	56%
May	36	55	65%	35	58%
June	41	73	56%	60	88%

**SOURCE OF DATA : Hydrological Summary of Gt Britain, Institute of Hydrology**

Yorkshire Water Services Data			
Rainfall Station	Total July	LTA July	LTA % July
Tophill	NDA	48	0%
Cottingham	65.0	49	133%
Bridlington	NDA	51	0%
Roundhill	84.5	62	136%
Fewston	65.9	61	108%
Osmotherley	95.2	61	156%
Scar House	76.3	78	98%
Watersheddles	97.0	91	107%
Gt Walden Edge	72.7	91	80%
Walshaw Dean	83.8	88	95%
Blackmoorfoot	65.6	70	94%
Ramsden	69.4	89	78%
Redmires	59.6	66	90%
Langsett	49.0	59	83%
<b>YORKSHIRE REGION</b>	<b>73.7</b>	<b>72.1</b>	<b>102%</b>
<b>EAST REGION</b>	<b>80.1</b>	<b>55.0</b>	<b>146%</b>
<b>PENNINE (WEST)</b>	<b>74.0</b>	<b>76.6</b>	<b>97%</b>

NDA= No data available/lack of readings, impacts % LTA for the month  
**SOURCE OF DATA : YWS RAIN GAUGES- weekly, so monthly data may include previous month or miss start of month**

MAJOR SOURCE OUTPUTS

28 July 2025

24/07/2025

	Operational Maxima & Design Yields (Ml/d)	WRAP Targets Week Beginning - 24/07/2025	Daily Average Previous 5 Days Starting - 24/07/2025	WRAP Targets Week Starting - 17/07/2025	Daily Average Week Starting - 17/07/2025
WATER TREATMENT WORKS					
CENTRAL					
ECCUP NO 1 WTW	100	53.0	36	40	49
ECCUP NO 2 WTW	60	44.0	51	44	48
HEADINGLEY	95	63.0	67	63	74
HARLOW HILL	41.5	27.0	24	27	27
THORNTON STEWARD	22.5	19.7	23	20	23
EAST					
EAST NESS	17	8.0	5	8	9
IRTON	23.5	13.0	14	13	15
RUSWARP	12	7.0	7	7	8
TOPHILL LOW	68	40.0	43	40	47
KELDGATE	90	60.0	73	60	72
NORTH WEST					
CHELLOW	175	148.0	134	148	165
GRAINCLIFFE	60	38.0	34	38	44
SLADEN VALLEY	12	8.0	8	8	8
OLDFIELD	10.1	6.0	4	6	4
EMBSAY	25	17.0	19	17	20
SOUTH					
INGBIRCHWORTH	20	20.0	20	20	13
LANGSETT	56	36.0	43	36	42
<b>(TOTAL)</b>	<b>75</b>	<b>56</b>	<b>63</b>	<b>56</b>	<b>55</b>
EWDEN	40	35.0	20	35	29
LOXLEY	40	26.0	24	26	32
<b>(TOTAL)</b>	<b>80</b>	<b>61</b>	<b>45</b>	<b>61</b>	<b>60</b>
RIVELIN	75	64.0	40	64	53
SOUTH WEST					
ALBERT	55	51.0	38	51	46
FIXBY	30	21.0	16	21	22
KIRKHAMGATE	30	17.0	16	17	16
<b>(TOTAL)</b>	<b>115</b>	<b>89</b>	<b>70</b>	<b>89</b>	<b>83</b>
BLACKMOORFOOT	23	20.0	18	20	19
LONGWOOD	32	27.0	17	27	20
<b>(TOTAL)</b>	<b>55</b>	<b>47</b>	<b>35</b>	<b>47</b>	<b>39</b>
HOLMBRIDGE	29	19.0	12	19	17
GRID					
ELVINGTON	260	159	202	159	169
LOFTSOME BRIDGE	110	75	84	75	25

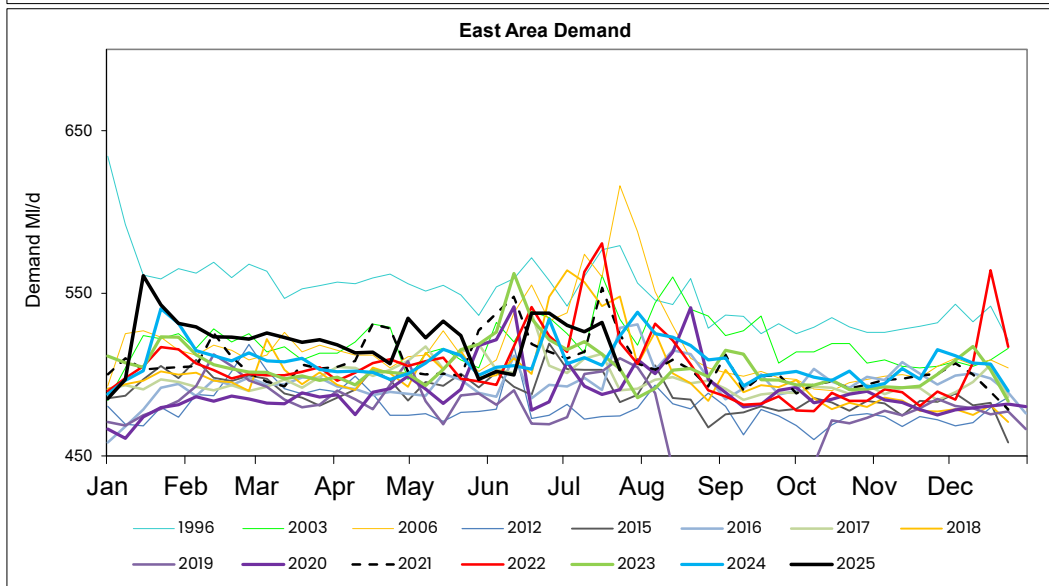
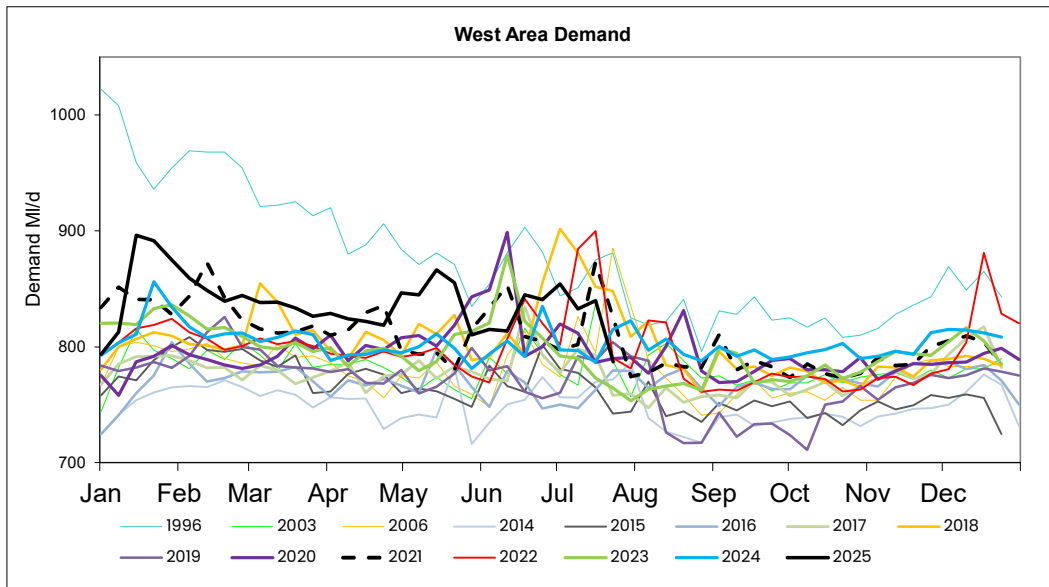
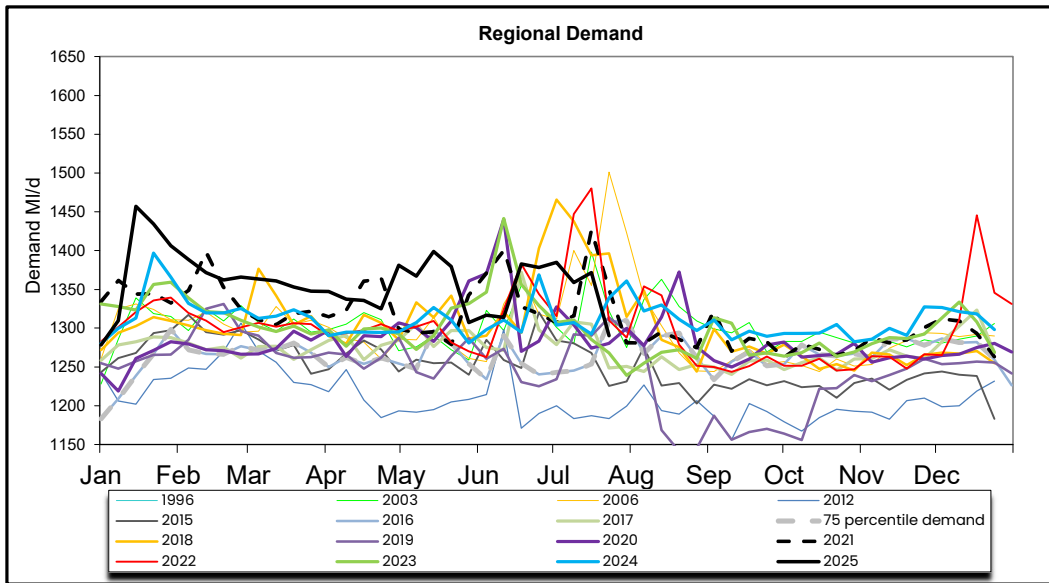
**Daily Average Demand MI/d**

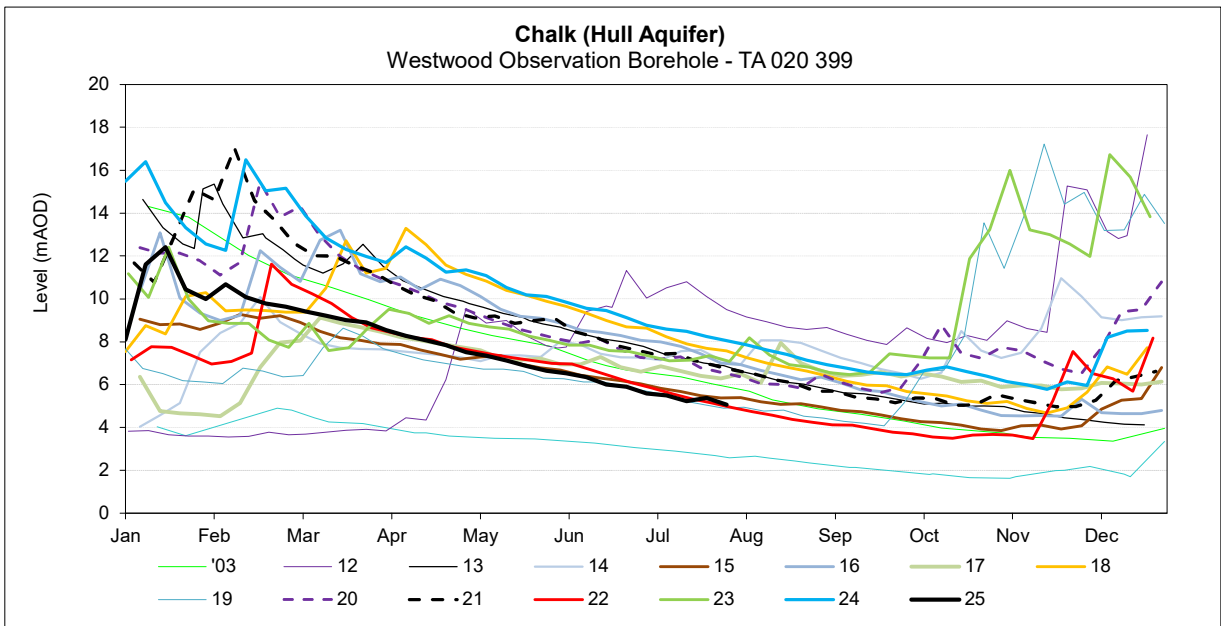
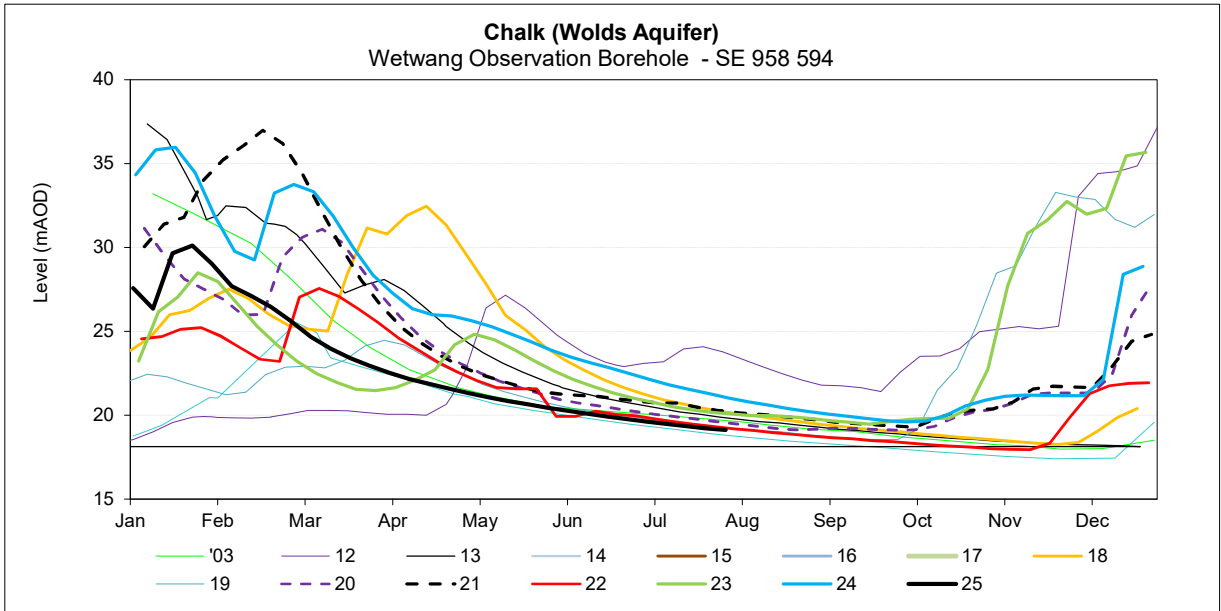
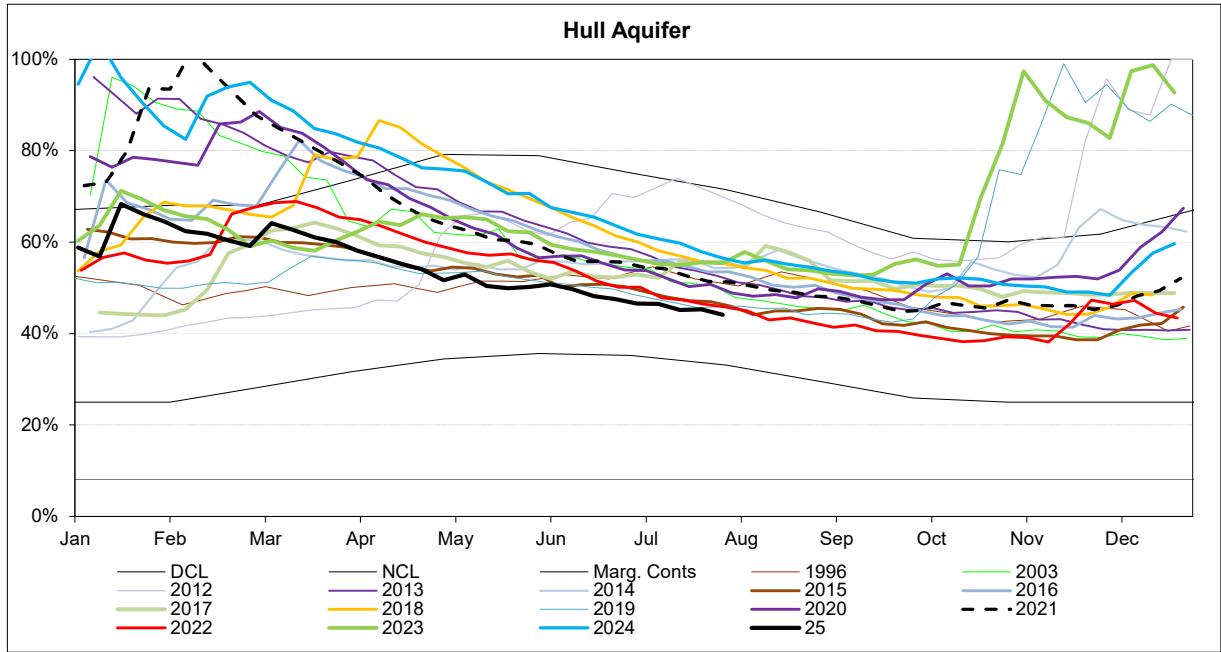
<b>Week Ending Wednesday</b>	<b>L E E D S</b>	<b>W A M K O E + R F L E Y L D</b>	<b>S E L B Y</b>	<b>H A R R O G A T E</b>	<b>H U L L</b>	<b>M A L L T O N</b>	<b>S H E F F / B L Y</b>	<b>D O N C A S T E R</b>	<b>B R A D F O R D</b>	<b>C A L D E R</b>	<b>S K I P T O N</b>	<b>Y O R K A R E A</b>	<b>R E G I O N</b>
25/06/2025	170	81	45	83	179	60	285	88	149	153	40	46	1378
02/07/2025	167	83	46	83	176	61	292	90	150	155	39	44	1385
09/07/2025	165	81	44	80	175	57	283	87	147	151	39	50	1359
16/07/2025	166	80	45	82	180	60	285	88	150	153	39	44	1372
23/07/2025	160	77	40	76	168	56	268	80	142	143	37	43	1290

**MONTHLY DEMANDS FROM WIS REPORT**

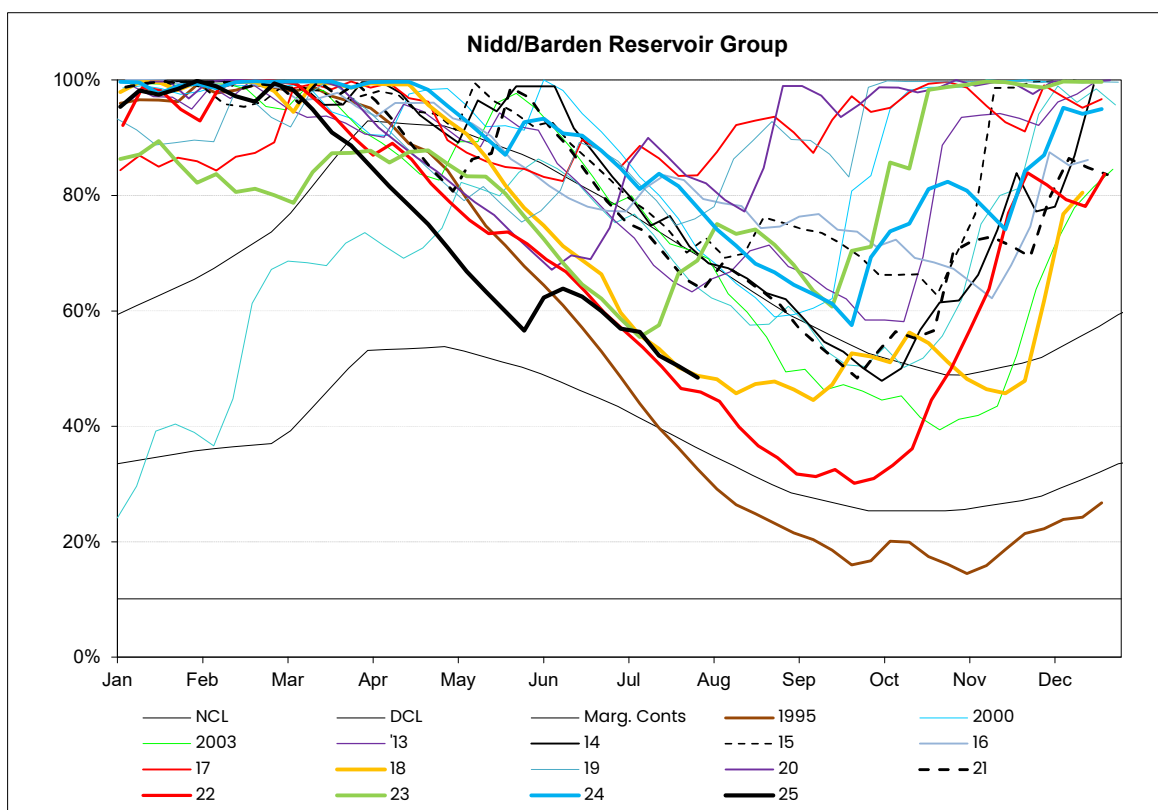
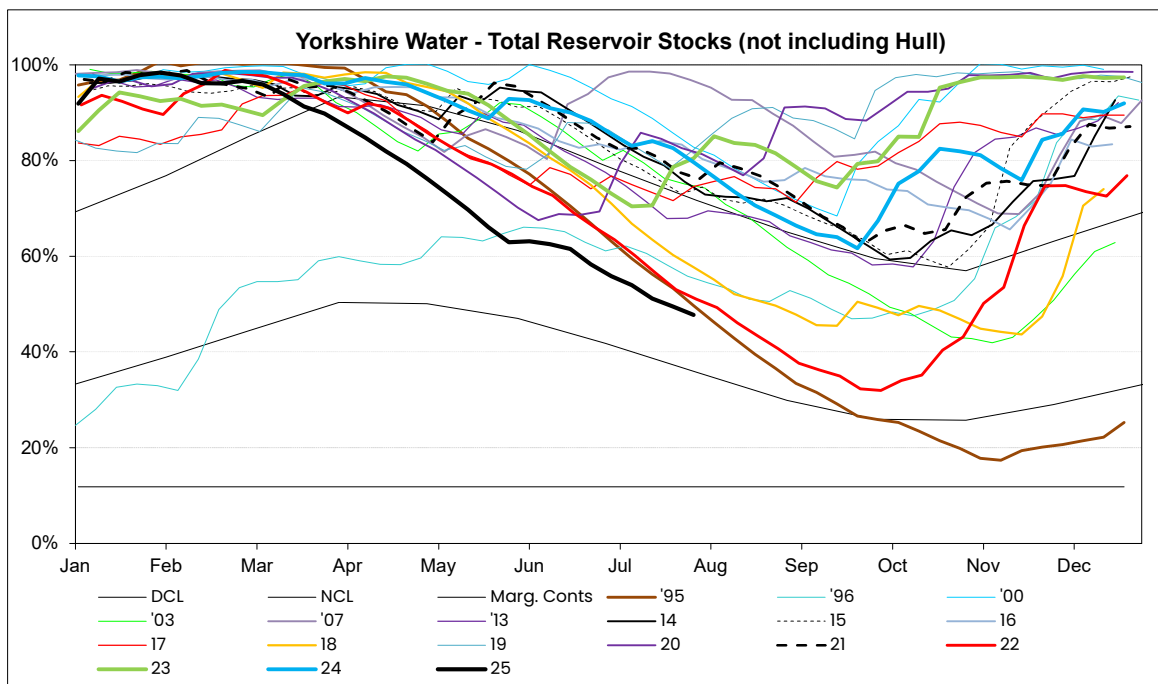
Apr-25	163	71	41	74	166	57	288	69	149	151	39	48	1316
May-25	166	72	42	76	160	58	293	79	150	154	39	48	1335
Jun-25	163	72	43	74	172	58	269	80	148	150	37	46	1312

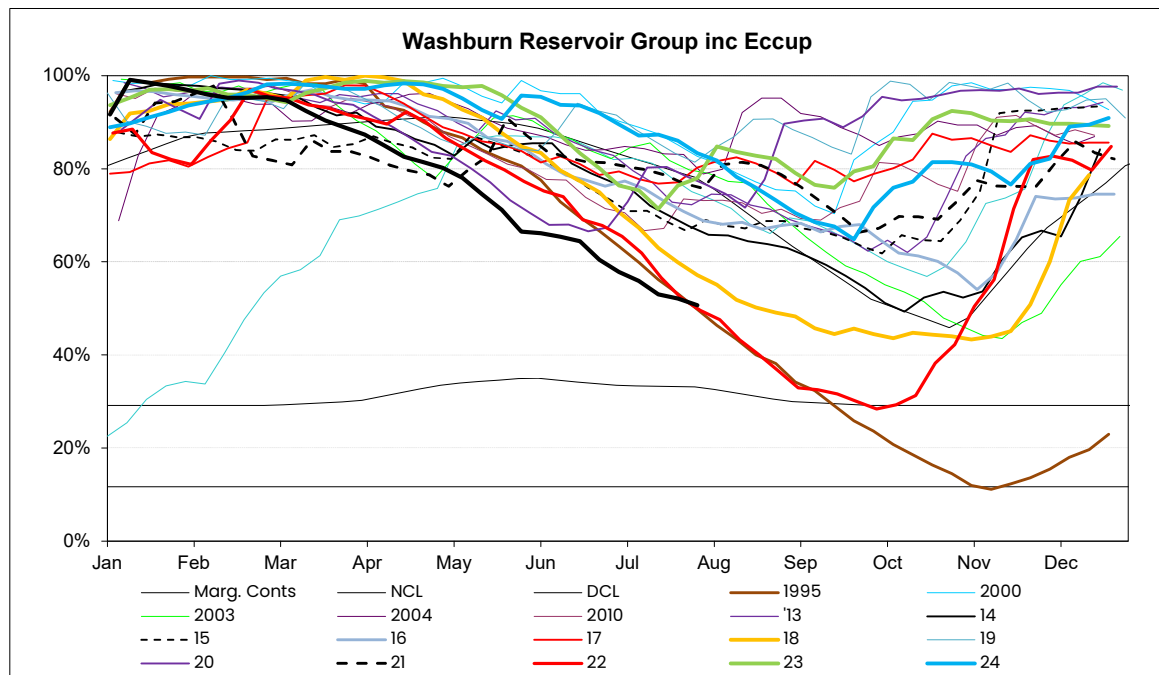
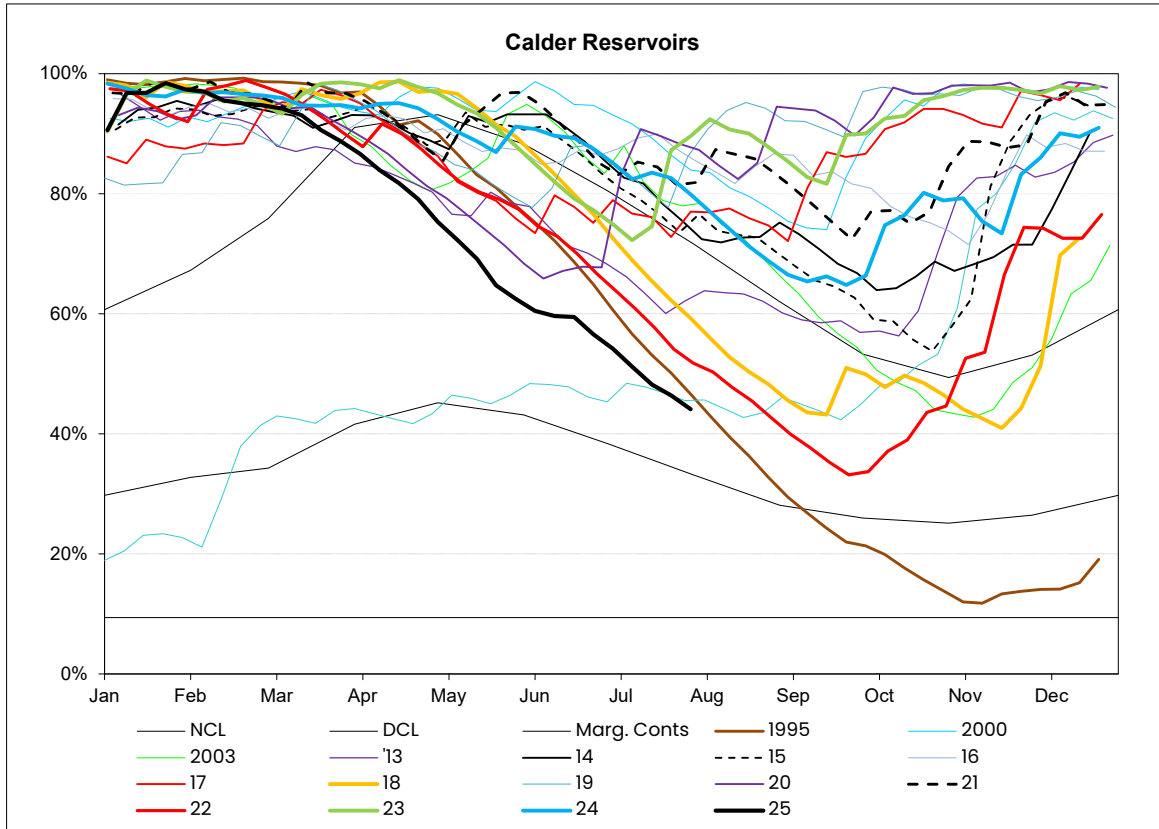
*NB Current month demands include some estimates for minor sources and are not exactly comparable with previous months' figures*



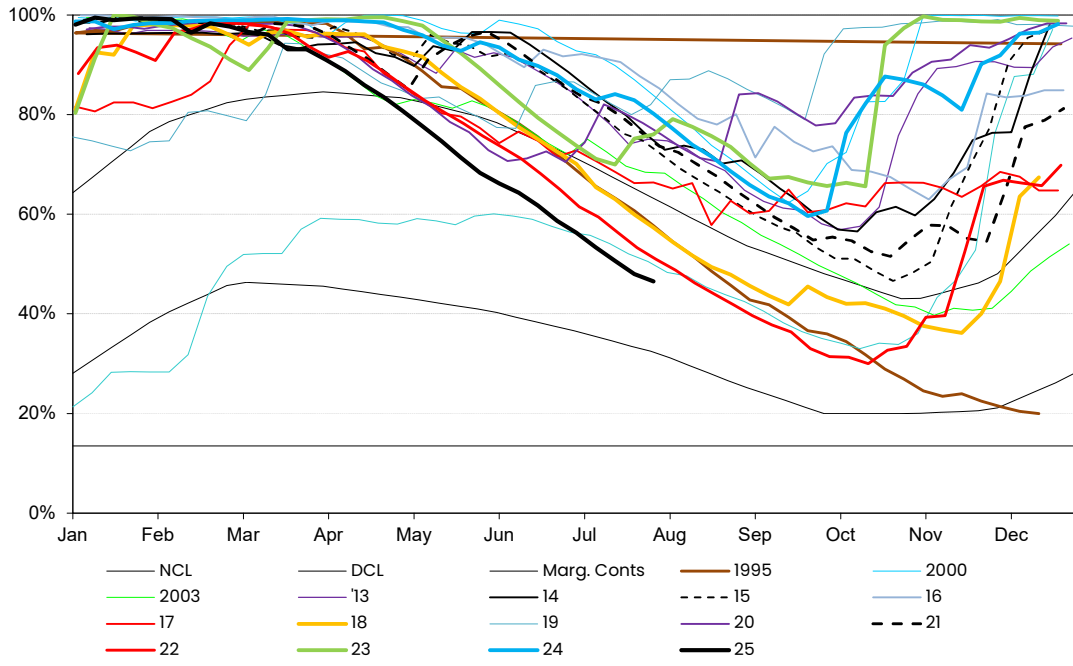


RESERVOIR STOCKS	28/07/2025		% Change	Planned Reservoir Safety Work	Required Drawdown & Duration	
Reservoir Group	% Stocks @	% Change	last week	Reason for Drawdown		
Calderdale (excl Withens Clough)	40.3%	-3.0%	-1.1%			
Boothwood/Ryburn (incl WC)	39.2%	-2.1%	-2.5%			
(Gorpley)	51.1%	-1.5%	0.0%			
Huddersfield	51.0%	-2.3%	-1.9%			
Brownhill/Digley	45.5%	-1.6%	-1.6%			
<b>Walshaw Dean Lower</b>	<b>22.3%</b>	<b>2.9%</b>	<b>-0.5%</b>	<b>OSA Repairs</b>	<b>Apr 25 - May 25</b>	<b>86.0%</b>
<b>Widdop</b>	<b>16.8%</b>	<b>-2.2%</b>	<b>1.4%</b>	<b>Increase Drawdown Capacity</b>	<b>June 25 - Aug 25</b>	<b>10.0%</b>
<b>Brownhill</b>	<b>49.9%</b>	<b>-0.8%</b>	<b>-0.7%</b>	<b>Leakage Investigation</b>	<b>Apr 25 - Sept 25</b>	<b>51.0%</b>
<b>Longwood Comp IRE</b>	<b>N/A</b>	<b>N/A</b>	<b>N/A</b>	<b>Spillway Grouting</b>	<b>TBC</b>	<b>40.0%</b>
<b>Longwood ESR</b>	<b>N/A</b>	<b>N/A</b>	<b>N/A</b>	<b>Pipework Painting</b>	<b>TBC</b>	<b>76.0%</b>
<b>Calder Area Total</b>	<b>44.1%</b>	<b>-2.3%</b>	<b>-1.8%</b>			
Nidd/Barden/Chelker	48.5%	-2.0%	-1.9%			
Grimwith	46.9%	-1.9%	-1.9%			
Worth Valley	57.4%	-1.5%	0.1%			
<b>March Ghyll</b>	<b>74.0%</b>	<b>0.1%</b>	<b>0.6%</b>	<b>Embankment Stability Works</b>	<b>Jan 23 - Dec 24</b>	<b>86.0%</b>
<b>Ponden</b>	<b>64.9%</b>	<b>-1.6%</b>	<b>0.1%</b>	<b>Repair Ground Anchor</b>	<b>Aug 24 - Mar 25</b>	<b>87.6%</b>
<b>Chelker</b>	<b>88.4%</b>	<b>-4.4%</b>	<b>3.0%</b>	<b>Pointing</b>	<b>Nov 24 - May 25</b>	<b>34.0%</b>
<b>Chelker</b>	<b>88.4%</b>	<b>-4.4%</b>	<b>3.0%</b>	<b>Pointing</b>	<b>Nov 24 - May 25</b>	<b>78.0%</b>
<b>North West Area Total</b>	<b>49.5%</b>	<b>-1.8%</b>	<b>-1.6%</b>			
Washburn/Eccup Resrs.	50.7%	-1.4%	-0.9%			
Thornton Steward	84.2%	-1.3%	-0.6%			
Leighton/Roundhill	47.9%	-1.5%	-1.1%			
Haverah Park	62.4%	-2.3%	-0.7%			
<b>Swinsty</b>	<b>43.5%</b>	<b>-4.2%</b>	<b>2.1%</b>	<b>Outlet Channel Repairs</b>	<b>Dates tbc</b>	<b>93.0%</b>
<b>Thruscross</b>	<b>44.9%</b>	<b>-2.8%</b>	<b>-2.5%</b>	<b>Bridge Repairs</b>	<b>Dates tbc</b>	<b>TBC</b>
<b>Cod Beck</b>	<b>100.0%</b>	<b>0.0%</b>	<b>0.0%</b>	<b>Inspection of Overflow and Upstream Face</b>	<b>Aug 24 - Mar 25</b>	<b>83.0%</b>
<b>Randy Mere</b>	<b>N/A</b>	<b>N/A</b>	<b>N/A</b>	<b>Upstream Face Repairs</b>	<b>TBC</b>	<b>17.0%</b>
<b>North Area Total</b>	<b>51.3%</b>	<b>-1.5%</b>	<b>-1.1%</b>			
Don Valley & Winscar	56.0%	-2.3%	-2.1%			
Rivelin Valley	74.4%	-1.7%	-4.2%			
Little Don	38.0%	-0.9%	-2.9%			
Ewden Valley	32.3%	-0.6%	-2.9%			
Loxley Valley	43.3%	-0.9%	-2.4%			
Redmires	34.0%	-1.3%	-3.7%			
<b>Redmires Upper</b>	<b>32.6%</b>	<b>-3.8%</b>	<b>-3.9%</b>	<b>Damage to Overflow Channel</b>	<b>Nov 23 - Oct 25</b>	<b>98.0%</b>
<b>Redmires Middle</b>	<b>35.4%</b>	<b>3.4%</b>	<b>-7.5%</b>	<b>Damage to Overflow Channel</b>	<b>Nov 23 - Oct 25</b>	<b>89.0%</b>
<b>Redmires Middle</b>	<b>35.4%</b>	<b>3.4%</b>	<b>-7.5%</b>	<b>Issues with Sheet Piles</b>	<b>Feb 25 - Oct 25</b>	<b>95.0%</b>
<b>Strines</b>	<b>43.5%</b>	<b>-0.8%</b>	<b>-2.1%</b>	<b>Overflow Investigation</b>	<b>Apr 25 -Sept 25</b>	<b>58.0%</b>
<b>South Area Total</b>	<b>42.0%</b>	<b>-0.9%</b>	<b>-2.7%</b>			
Tophill Low	80.8%	0.8%	-2.5%			
Hull Aquifer	44.1%	-1.2%	0.1%			
<b>East Area Total</b>	<b>47.1%</b>	<b>-1.0%</b>	<b>-0.1%</b>			
<b>Regional Total (DCP)</b> <b>(inc East Area)</b>	<b>47.3%</b>	<b>-1.7%</b>	<b>-1.5%</b>			
<b>YORKSHIRE TOTAL (Supply)</b> <b>(not inc East Area)</b>	<b>47.4%</b>	<b>-1.8%</b>	<b>-1.7%</b>			





### Sheffield & Barnsley Reservoirs

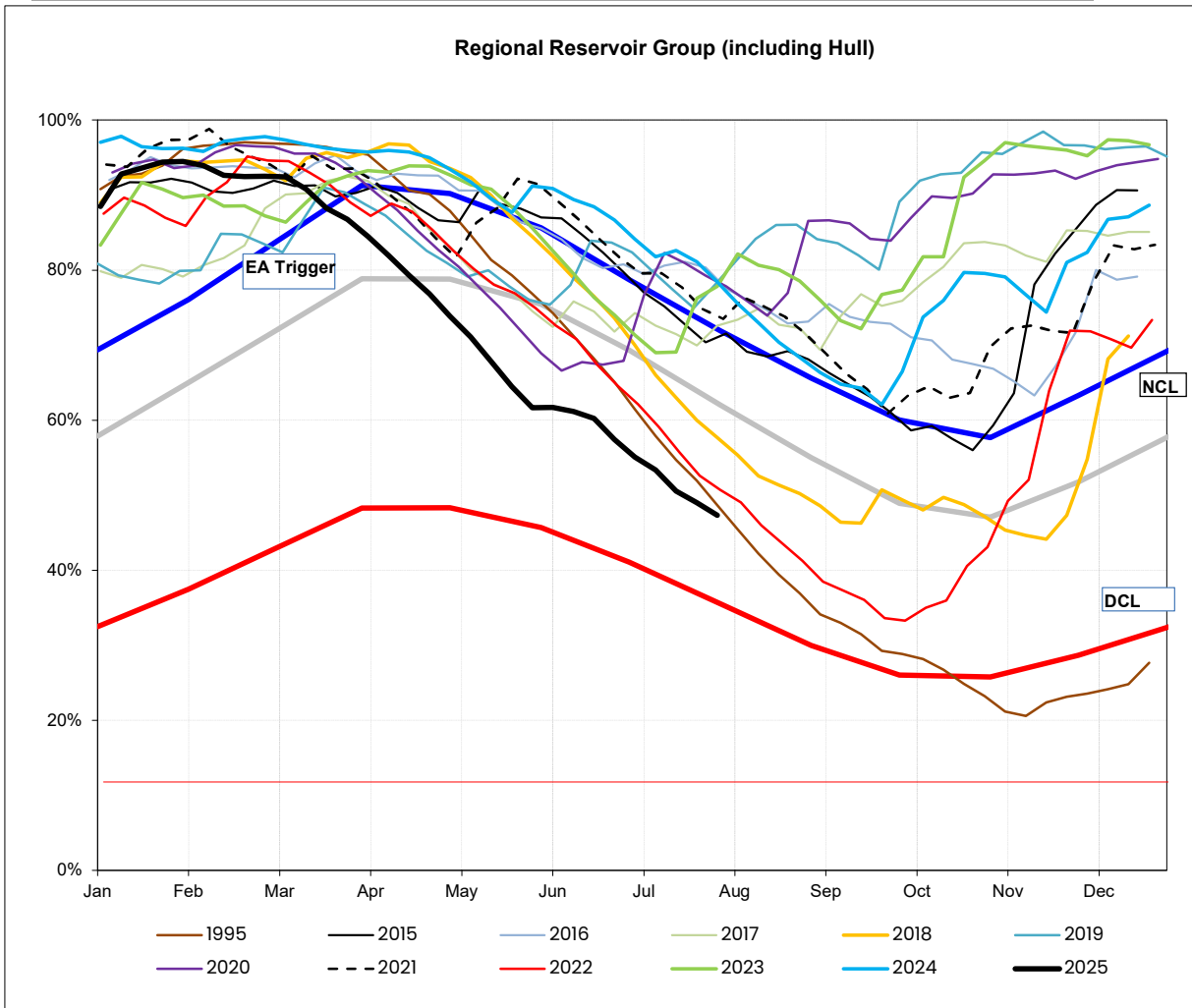


**EA STOCKS REPORT**

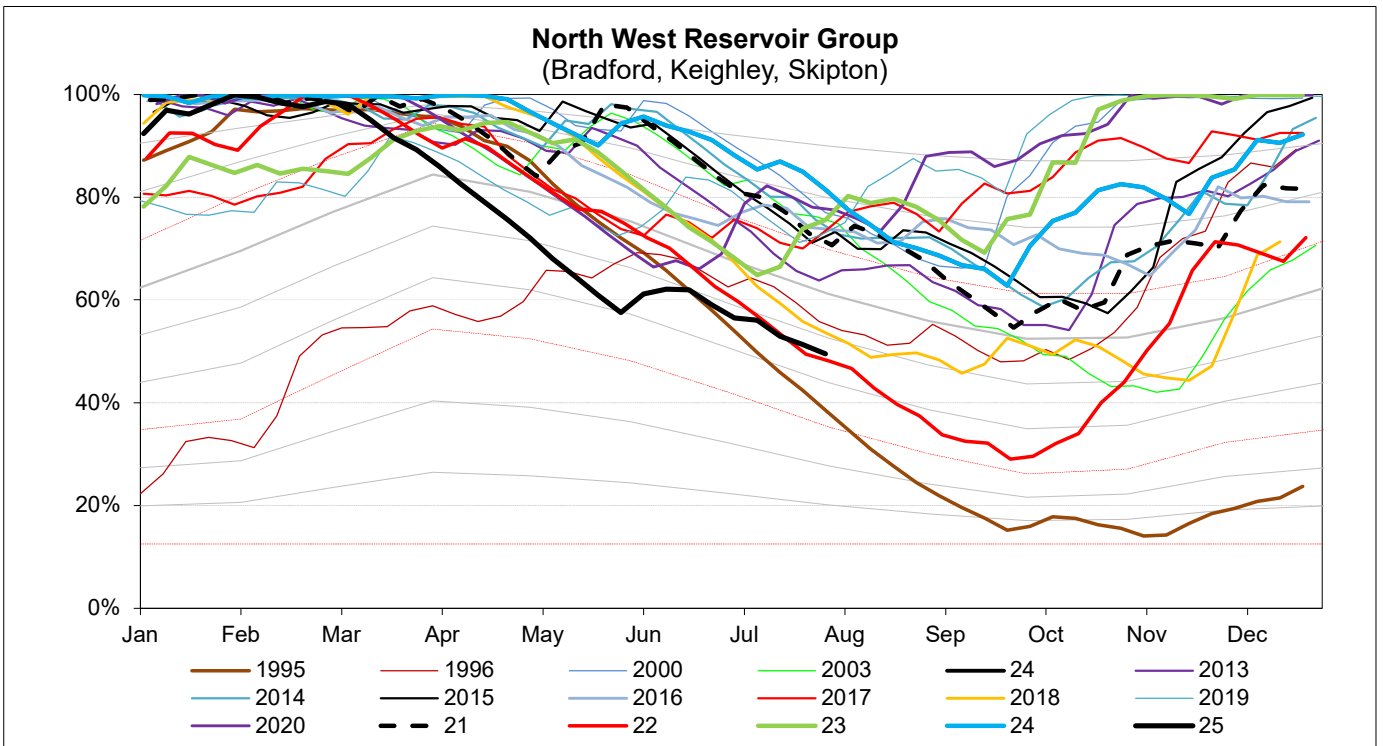
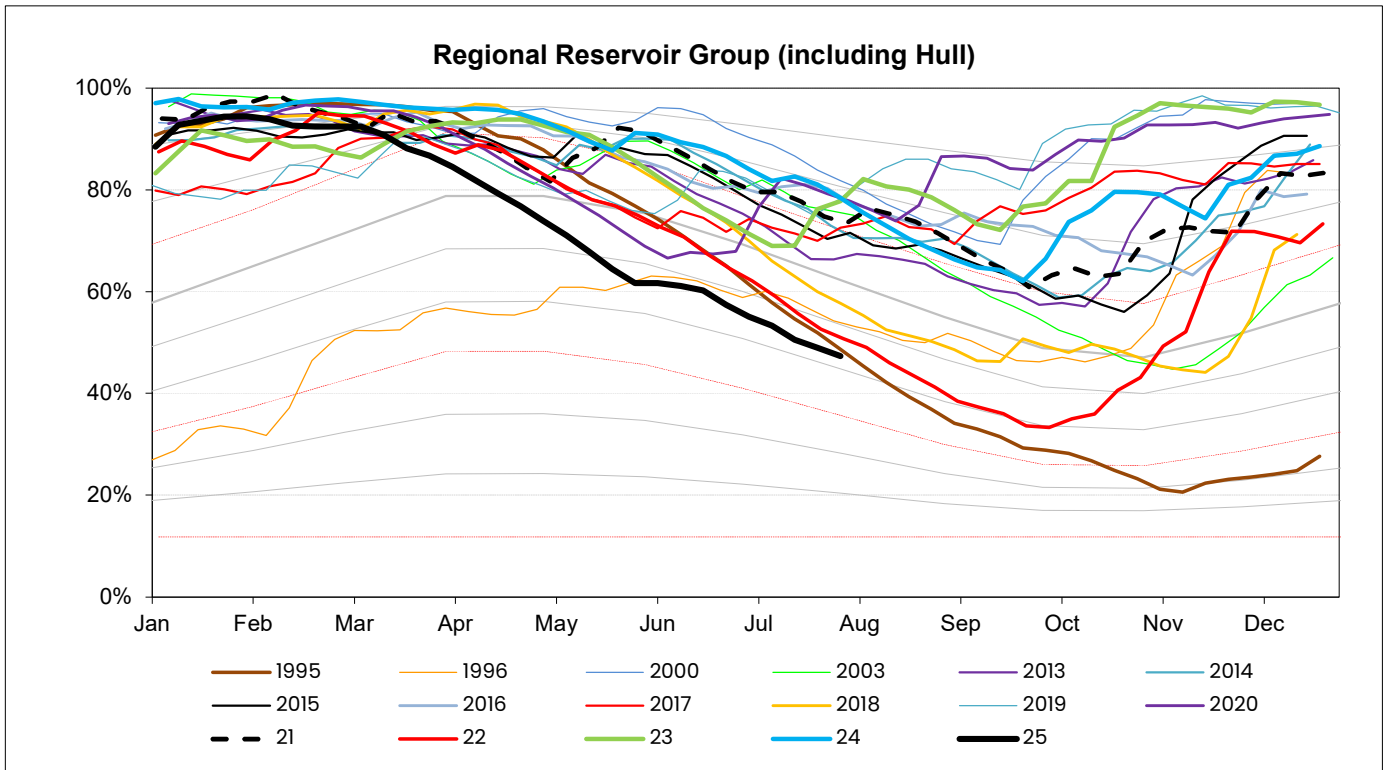
**28 July 2025**

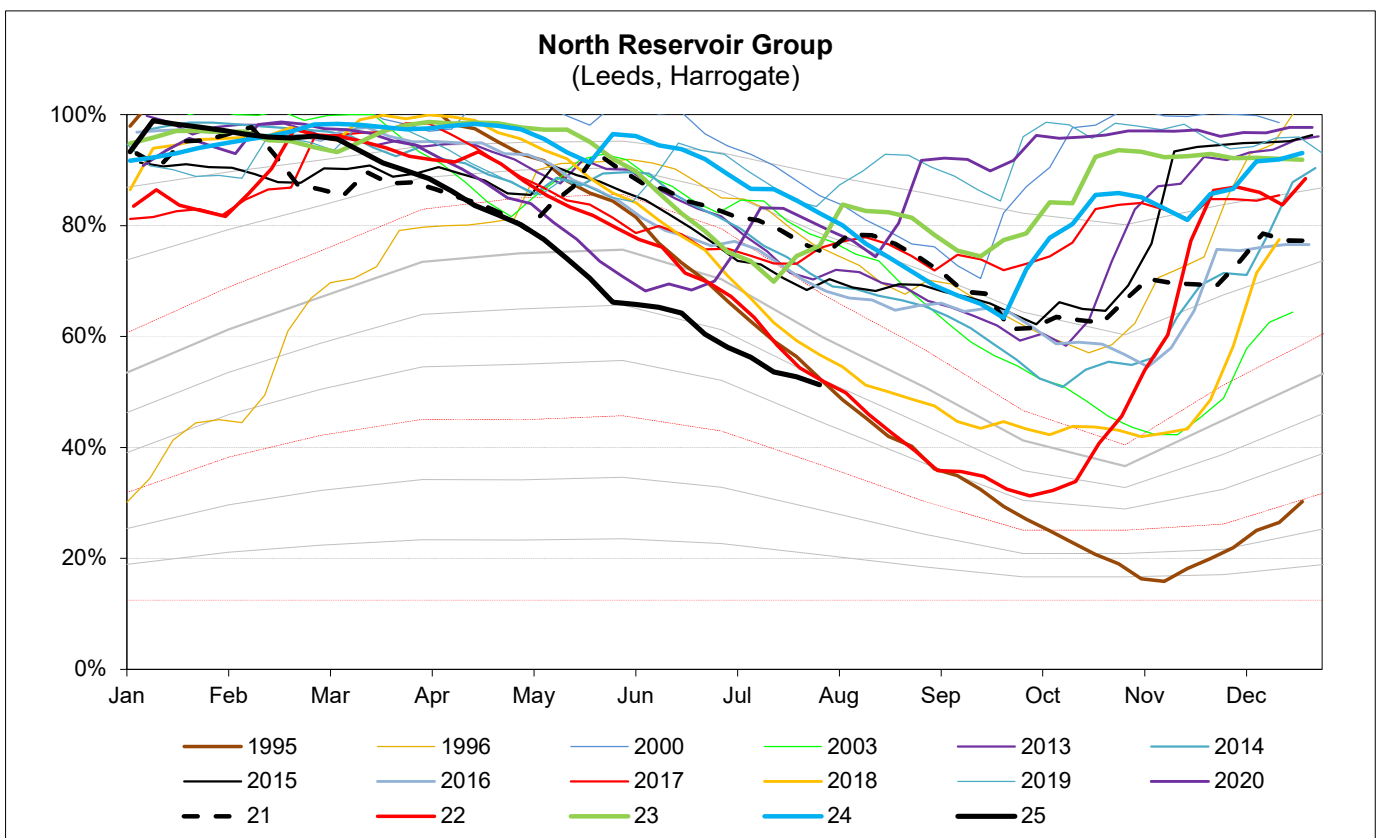
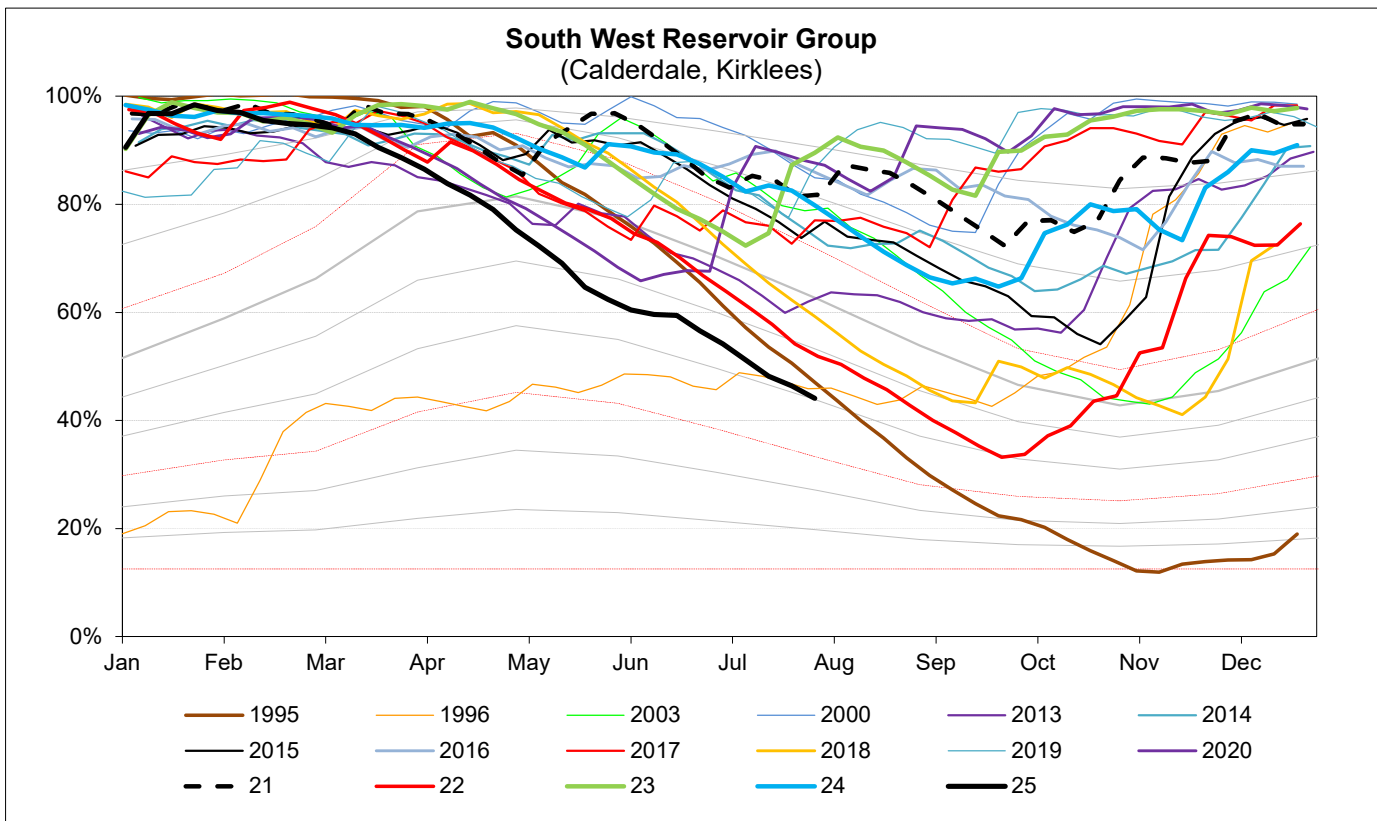
EA Stocks Report		28/07/2025					
	MI	%	% change	MI	%	% change	
<b>South West Area Supply Reservoirs</b>				<b>South Area Supply Reservoirs</b>			
Calderdale Group	4489	40.3%	-3.0%	Don Valley	1512	72.7%	-0.8%
Huddersfield Group	7200	51.0%	-2.3%	Little Don	2797	38.0%	-0.9%
Brownhill/Digley excl Holme	2565	45.7%	-1.5%	Ewden Valley	1595	32.3%	-0.6%
Boothwood/Ryburn	4752	40.6%	-1.8%	Loxley Valley	2978	43.3%	-0.9%
				Rivelin	607	74.4%	-1.7%
<b>South West Reservoir Group</b>	19424	44.1%	-2.3%	Redmires	943	34.0%	-1.3%
Bradford Area Supply Reservoirs				<b>South Reservoir Group</b>			
Gouthwaite	3402	58.5%	0.3%	10432	42.0%	-0.9%	
Grimwith	10217	46.9%	-1.9%	Winscar Group	4908	52.2%	-2.7%
Nidd/Barden/Chelker	9292	48.5%	-2.0%	Compensation Reservoirs			
Rombalds/Thornton Group	1274	57.1%	0.1%	Scout Dike	239	34.4%	-3.6%
Skipton Area Supply Reservoirs				Underbank	1738	60.6%	-2.7%
Embsay	679	93.9%	-2.4%	Morehall	1010	46.5%	-2.1%
Worth Valley Group	1902	57.4%	-1.5%	Damflask	3192	62.5%	-2.9%
				<b>North Area Supply Reservoirs</b>			
<b>North West Reservoir Group</b>	23364	49.5%	-1.8%	Washburn	11847	50.7%	-1.4%
Compensation inc Silsden	983	41.8%	-3.0%	Eccup	4543	64.8%	-0.3%
Gouthwaite	3402	58.5%	0.3%	Leighton/Roundhill	3544	47.9%	-1.5%
March Ghyll & Elslack Reservoirs excluded for consistency with stocks predictions in WRAPSIM				Haverah Park	626	62.4%	-2.3%
East Area Supply Reservoirs				Lumley Moor	237	62.2%	-1.2%
Tophill Low	1360	80.8%	0.8%	Thornton Steward	798	84.2%	-1.3%
Hull Aquifer	8378	44.1%	-1.2%	<b>North Reservoir Group</b>			
				17052	51.3%	-1.5%	
<b>East Reservoir Group</b>	9738	47.1%	-1.0%	Lindley Wood Compensat	470	16.1%	1.3%
				Regional Reservoir Group	84918	47.3%	-1.7%

(sum of South West, North West, East, South, North & Winscar Rese

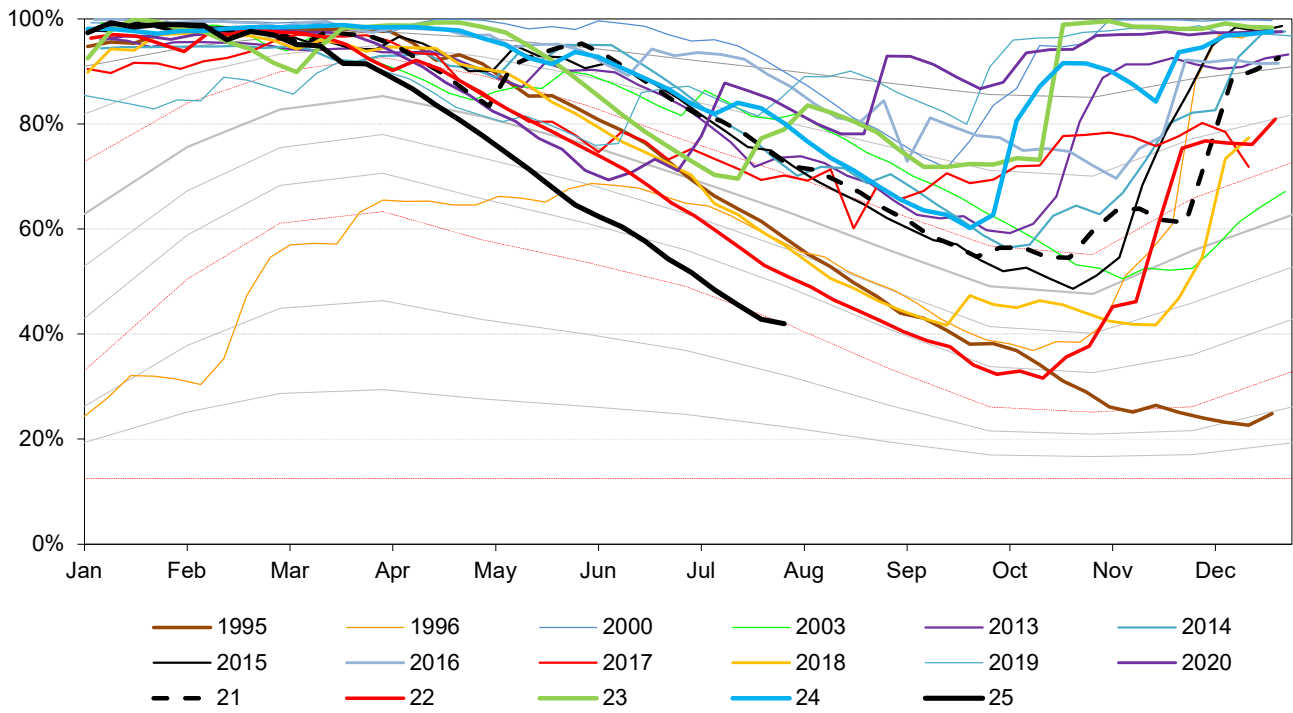


Triggers	
EA early warning (CL4)	Water resources to advise EA on production
Hosepipe Restrictions	When projected falling stocks fall below DCL
Drought Orders	When stocks are below DCL.

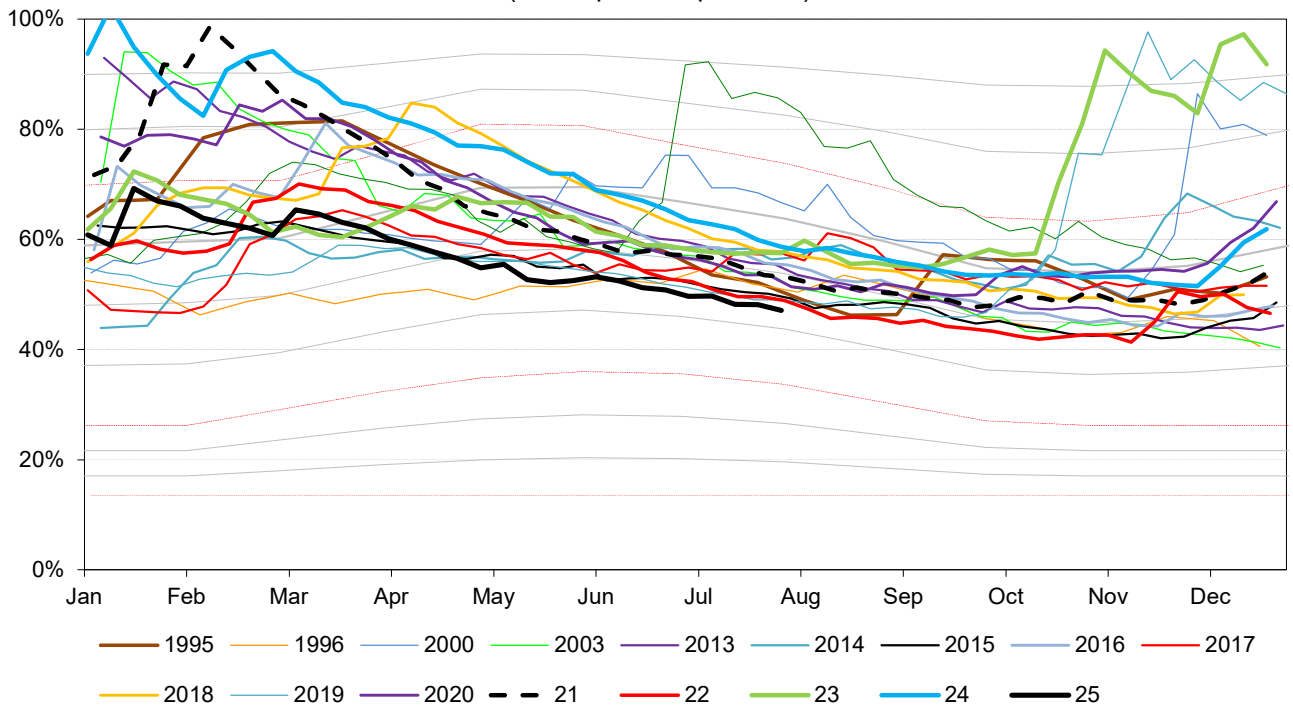


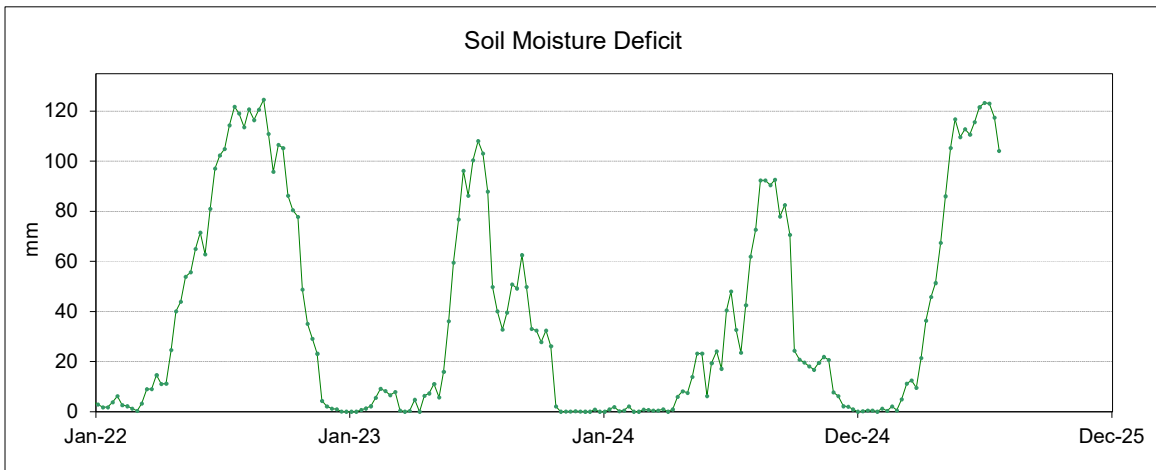
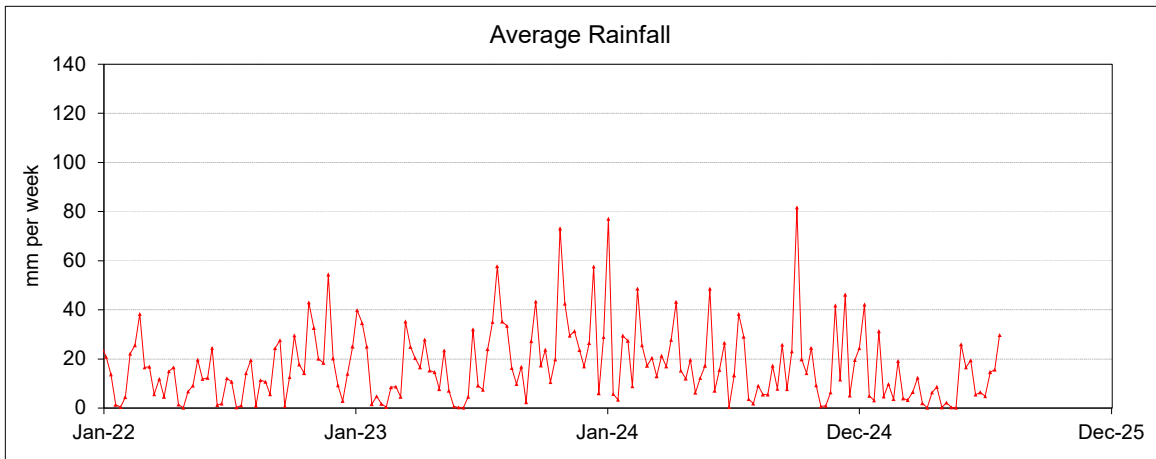
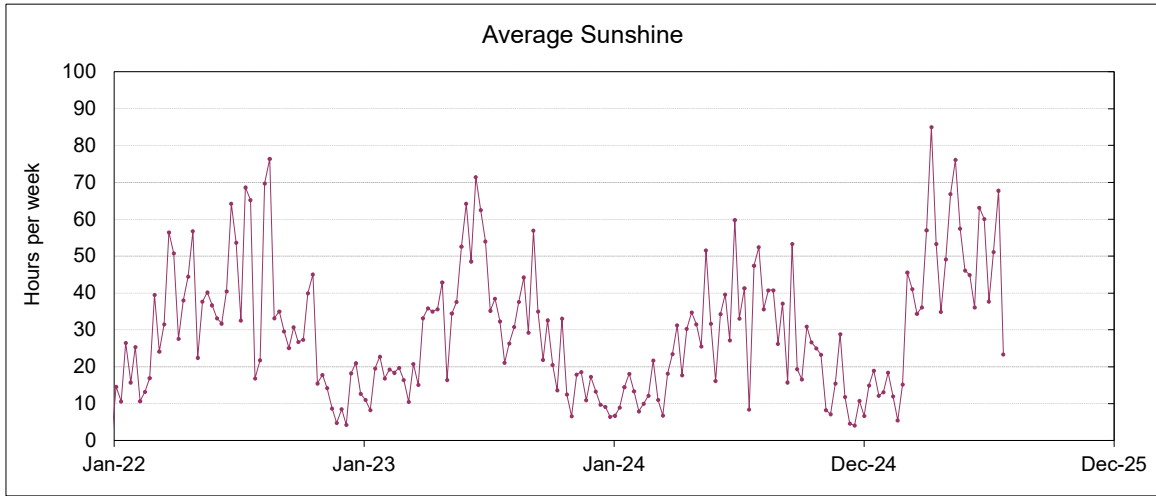


### South Reservoir Group (Sheffield, Barnsley)



### East Reservoir Group (Hull Aquifer, Tophill Low)





This page will normally be updated monthly (approx mid month).

This data may be subject to change following routine validation checks.

Where showing a negative value, this is normal at certain sources, due to the imports of water into that source being greater than the volumes abstracted.

Units in Ml

Serial No	Source	Reporting Year	June	Year to date Ml	Run date	
					Annual Limit	% of Annual Limit
02/27/023/332	Ainderby Steeple Boreholes	C	126.4	756	1760	42.9%
03/28/083/010	Armthorpe Boreholes	C	236.0	1421	3319	42.8%
03/28/083/012	Austerfield Boreholes	C	201.9	1294	11615	11.1%
02/27/022/020	Aysgarth & Newbiggin Springs	C	14.8	92	341	27.0%
02/27/012/035	Baitings, Ryburn & Blackhouse reservoirs	C	1196.6	3351	20457	16.4%
02/27/023/032	Bellerby Borehole and springs near Bellerby	F	73.3	224	1250	17.9%
02/27/022/209	Birk Gill & River Burn	C	57.6	1624	6400	25.4%
02/27/012/254	Boothwood Reservoir & associated catchwaters	C	319.5	1830	20457	8.9%
02/27/10/112	Boshaw Whams Reservoir	C	0.0	0	55	0.0%
03/28/083/105	Boston Park Boreholes	C	119.3	993	3318	29.9%
02/27/024/305	Brayton Barff Boreholes	C	0.0	0	2250	0.0%
02/26/030/002	Bridlington	C	161.1	1027	2500	41.1%
02/27/005/031	Broomhead Reservoir	F	1016.7	3036	12410	24.5%
02/26/030/004	Burton Agnes	C	76.8	452	1000	45.2%
02/27/018/080	Carlton Hanger Lane Boreholes	C	190.6	1623	3500	46.4%
02/27/018/079	Carlton Mill Lane Boreholes	C	156.1	983	3800	25.9%
02/27/019/009	Carr Bottom Reservoir, Burley Woodhead	C	0.0	18	409	4.4%
02/27/023/340	Catterick Boreholes	F	205.5	613	3650	16.8%
02/27/027/136	Cayton Carr Lane Boreholes	C	103.6	248	3928	6.3%
02/27/027/163	Cayton Station Road Borehole	C	107.1	862	2646	32.6%
02/27/019/137	Chelker Reservoir	C	-0.8	858	5000	17.2%
02/27/023/031	Coalsgarth Springs	C	1.2	42	750	5.7%
02/27/011/064	Colne Valley Catchwaters	F	114.1	1065	5840	18.2%
02/26/032/126	Cottingham Well	C	733.8	5876	18184	32.3%
02/27/018/081	Cowick Boreholes	C	367.2	2191	5250	41.7%
02/27/023/046	Cranehow & Downholme Springs	C	0.0	0	318	0.0%
02/27/023/030	Crumma, Newsham & Gandale Springs	C	55.4	353	1364	25.9%
02/27/005/030	Dale Dyke & Agden Reservoirs	F	1025.0	3296	21412	15.4%
02/27/012/261	Dean Head & Scammonden	F	56.2	524	3650	14.4%
02/27/19/121	Dib Spring, Hawkswick	C	0.0	0	27	0.0%
02/26/032/126	Dunswell Well	C	807.3	3243	16593	19.5%
NE/27/025/021	East Ness Boreholes	F	278.0	874	5680	15.4%
02/26/031/087	Elmswell Wold Borehole	C	31.7	54	1273	4.3%
02/27/015/045	Embsay Reservoir	C	72.0	473	1846	25.6%
02/27/016/196	Esholt Sewage Treatment Works	C	0.0	0	88	0.0%
02/26/032/124	Etton Boreholes	C	130.9	711	5100	13.9%
03/28/083/012	Finningley Boreholes	C	323.0	1863	6780	27.5%
02/27/022/328	Fossdale (High Shaw) Springs	C	8.3	59	227	25.8%
02/27/018/120	Goosehouse Boreholes	C	277.5	1238	3500	35.4%
02/27/012/043	Gorpley Reservoir	C	0.0	0	1823	0.0%
02/27/016/022	Graincliffe Reservoir	F	-81.1	-200	2728	-7.3%
02/27/012/037	Green Withens Ringstone Res & catchwater	C	512.8	2550	20457	12.5%
02/27/019/051	Greenhow Tunnel (Nidd Aqueduct) Dale Head Intake	C	0.0	0	214	0.0%
02/27/019/052	Greenhow Tunnel (Nidd Aqueduct) No.2 Access Shaft	C	0.0	0	6819	0.0%
NE/27/019/005	Grimwith Reservoir to Nidd Aqueduct	F	85.3	944	3650	25.9%
02/26/030/003	Haisthorpe Boreholes	C	221.2	1387	5000	27.7%
03/28/083/012	Hatfield Boreholes	C	119.9	722	3319	21.7%
03/28/083/100	Hatfield Woodhouse Boreholes	C	0.0	0	3320	0.0%
02/27/029/010	Hazel Head Springs	C	7.9	233	1162	20.1%
02/27/012/041	Hebden, Luddenden & Hebble Valley Resrs	F	1042.7	3258	15695	20.8%
02/27/018/077	Heck Boreholes	C	0.0	0	2489	0.0%
03/28/083/012	Highfield Lane Boreholes	C	433.0	2606	11615	22.4%
02/27/023/685	Hollin Hill Borehole	F	0.0	11	45	24.6%
02/27/010/063	Holmestyes & Digley Reservoirs	F	170.5	587	5840	10.1%
02/27/22/024	Horsehouse Spring, leyburn	C	0.0	0	33	0.0%
02/27/027/002	Howe Hill Well	F	78.0	235	1014	23.2%
02/26/031/006	Hutton Cranswick	C	47.1	275	796	34.6%
02/27/005/012	Ingbirchworth Reservoir & Annat Royd Intake	C	7.8	1053	3637	29.0%
02/27/005/202	Ingbirchworth South Borehole	F	4.0	12	132	9.3%
02/27/027/058	Irton	C	460.5	2886	8215	35.1%
02/27/21/015	John O'Gaunts and Beaverdyke Reservoirs	C	0.0	0	1909	0.0%
02/27/014/010	Keighley Moor Reservoir	F	55.3	131	6951	1.9%
02/27/025/128	Keld Head Boreholes	C	182.0	1073	3319	32.3%
02/26/032/126	Keldgate Boreholes	C	378.9	1632	5819	28.0%
02/26/031/002	Kilham	C	8.8	75	1818	4.1%

02/27/005/032	Langsett Reservoir	C	925.8	6211	17155	36.2%
02/27/022/210	Leighton Reservoir & Spruce Gill stream intake	C	259.2	3506	13184	26.6%
03/28/083/107	Littleworth Borehole	C	0.0	0	1659	0.0%
02/27/028/270	Loftsome Bridge ASR Borehole No.1	C	0.0	0	150000	0.0%
02/27/014/009	Lower Laithe Reservoir	F	93.0	423	6951	6.1%
02/27/005/011	Midhope Reservoir & Knoll Brook Intake	F	160.1	757	17155	4.4%
02/26/034/006	North Newbald	C	0.0	0	548	0.0%
03/28/083/012	Nutwell Boreholes	C	238.1	1216	4983	24.4%
02/27/019/006	Panorama, Hilltop & Old Reservoirs & Springs	C	3.8	139	1000	13.9%
02/27/018/078	Pollington Boreholes	C	209.2	1207	5000	24.1%
02/27/014/058	Ponden Reservoir	F	142.0	329	6951	4.7%
02/27/016/023	Reva Reservoir, Hawkesworth	C	-6.7	373	1364	27.4%
02/27/005/029	Rivelin and Redmires Reservoirs	F	123.4	429	8030	5.3%
02/27/028/017	River Derwent at Elvington	F	5512.8	16498	75000	22.0%
02/27/028/083	River Derwent at Loftsome Bridge	F	1184.4	4499	30400	14.8%
02/27/029/012	River Esk	C	284.9	1651	7823	21.1%
02/26/031/047	River Hull & West Beck	C	1392.4	7052	25000	28.2%
02/26/032/194	River Hull for Sewer Cleaning	C	0.0	0	91	0.0%
02/27/024/078	River Ouse at Acomb	F	957.9	2603	35000	7.4%
02/27/024/158	River Ouse at Moor Monkton	F	3342.5	9211	73000	12.6%
02/27/022/214	River Ure at Kilgram Bridge	F	841.0	1301	15000	8.7%
02/27/020/196	River Wharfe at Arthington	F	613.5	708	19009	3.7%
02/27/019/129	River Wharfe at Lobwood	F	2443.3	7019	27392	25.6%
03/28/083/012	Rossington Bridge Boreholes	C	0.0	0	5172	0.0%
02/27/022/027	Roundhill and Lumley Moor Reservoirs	C	0.0	219	3500	6.3%
02/27/005/013	Royd Moor Reservoir & Intakes	C	58.0	651	2955	22.0%
02/27/021/016	Scargill Reservoir	C	62.8	449	1932	23.2%
02/27/021/092	Scarhouse & Angram Resvrs with tunnel & catchwater	C	2766.4	18030	38164	47.2%
02/27/15/149	Silsden Beck, Stilling-Basin at foot of Silsden Reservoir Emb	C	0.0	0	10	0.0%
02/26/032/126	Springhead Well	C	807.2	4191	13638	30.7%
02/27/022/021	Stalling Busk & Marsett Springs	C	0.0	0	33	0.0%
02/27/022/208	Stock Beck, Carlesmoor Beck & River Laver	C	42.3	1581	3500	45.2%
02/27/023/684	Stubbing Nook Borehole	F	0.0	50	135	37.3%
03/28/083/012	Thornham Boreholes	C	296.3	1794	6213	28.9%
02/27/016/160	Thornton Moor & Stubden Reservoirs	C	96.2	1550	6214	24.9%
02/27/012/038	Turvin Clough	C	94.3	137	4014	3.4%
02/27/019/054	Upper & Lower Barden Reservoirs	C	406.8	3216	14223	22.6%
02/27/020/088	Washburn Valley Reservoirs	C	2704.3	15787	43800	36.0%
02/27/015/041	Watersheddles Reservoir	F	85.6	337	6951	4.9%
02/27/016/021	Weecher Reservoir	C	2.9	97	909	10.7%
02/27/011/065	Wessenden Valley, Blackmoorfoot & Deerhill	F	323.1	1587	12410	12.8%
02/27/023/034	West Stonesdale (Garland Hill) Springs	C	0.0	0	282	0.0%
02/27/015/042	Whinney Gill & Jenny Gill Reservoirs	C	0.0	0	377	0.0%
02/27/005/026	Winscar, U & L Windleden, Harden & Snailsden	F	733.3	2098	10140	20.7%
02/27/012/036	Withens Clough Resr & Catchwater	C	161.1	1170	3319	35.3%
02/27/010/011	Yateholme, Riding Wood, Ramsden & Brownhill	F	278.4	874	6820	12.8%

Licences with Aggregated Annual Quantities		June	Year to date MI	Annual Limit	% of Annual Limit
Baitings, Ryburn, Boothwood, Green Withens	C	2029	7731	20457	38%
Langsett, Midhope	C/F	1086	6968	17155	41%
Worth Valley	F	376	1221	6951	18%
River Derwent (Elvington, Loftsome)	F	6697	20997	94841	22%
Cayton, Irton	C	671	3996	10700	37%
Selby Boreholes	C	1201	7241	25283	29%
Doncaster Wellfield	C	1967	11909	30295	39%
Doncaster Sub Group	C	1612	9495	26049	36%
Austerfield & Highfield Lane	C	635	3900	9956	39%
Hull Groundwater Sources	C	2727	14942	32850	45%

**Third Party Agreements (Calendar Year)**

Source	Reporting Year	Units in MI		Run date	
		June	Year to date MI	Annual Limit	% of Annual Limit
CRT, Hudds Narrow Canal	C	107	424	1273	33%
Severn Trent Ladybower Reservoir	C	1328	8673	21550	40%

Reading date: 04-Jul-25

	Reporting Year	Year to date MI	Annual Limit	% of Annual Limit
Winscar To Langsett Transfer Usage	F	763	2482	31%