

WATER SITUATION REPORT

1. Rainfall

The Yorkshire Region Has Received 17.1% of LTA for May

2. Reservoirs (surface water supply reservoirs not including Hull)

Over the Past Week Our Reservoir Stocks Have Decreased By -3.21% To 62.9%

3. Rivers

Some of Our Rivers are Below Critical Level

4. Demand

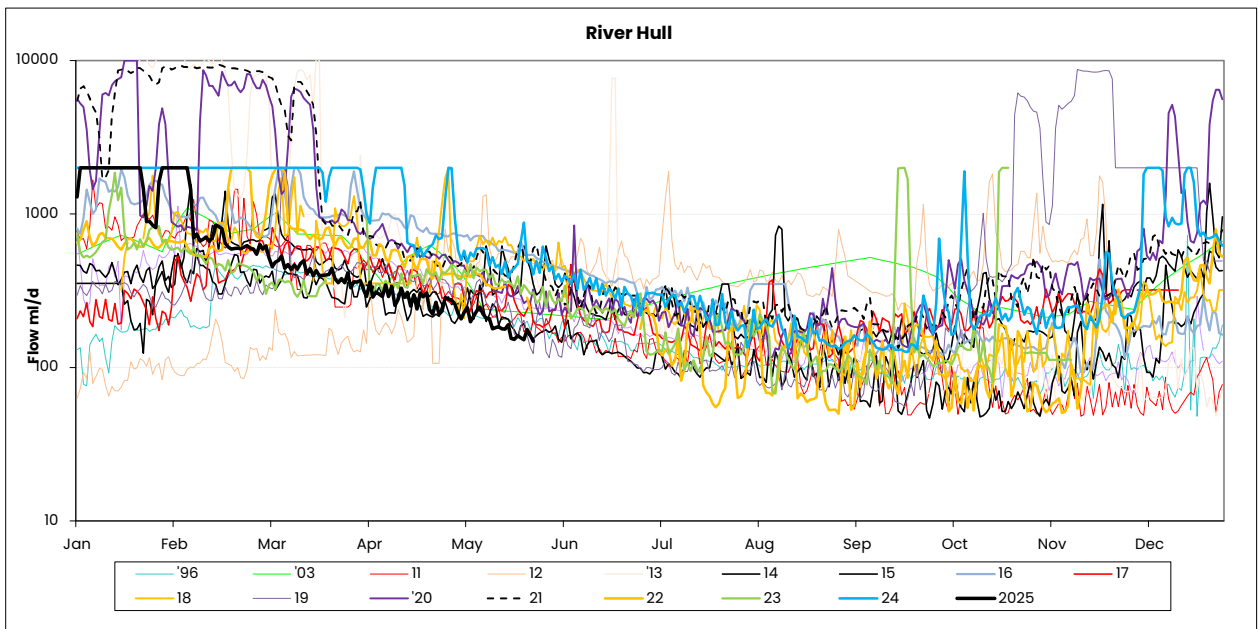
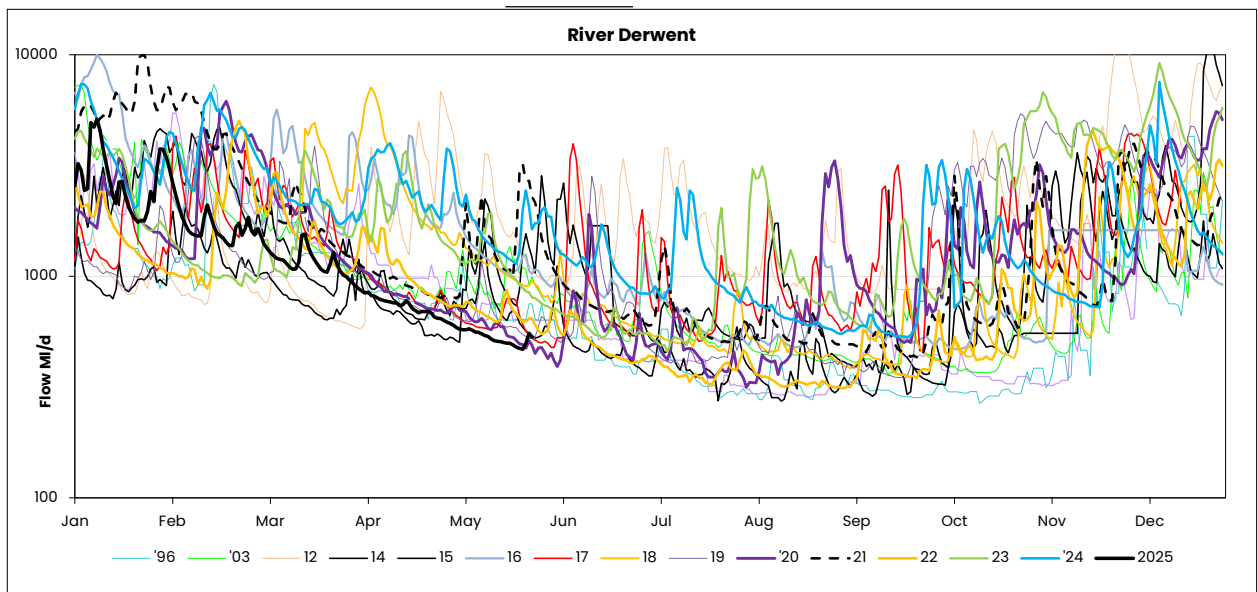
Regional Demand = 1376.4 MI/d (including York)

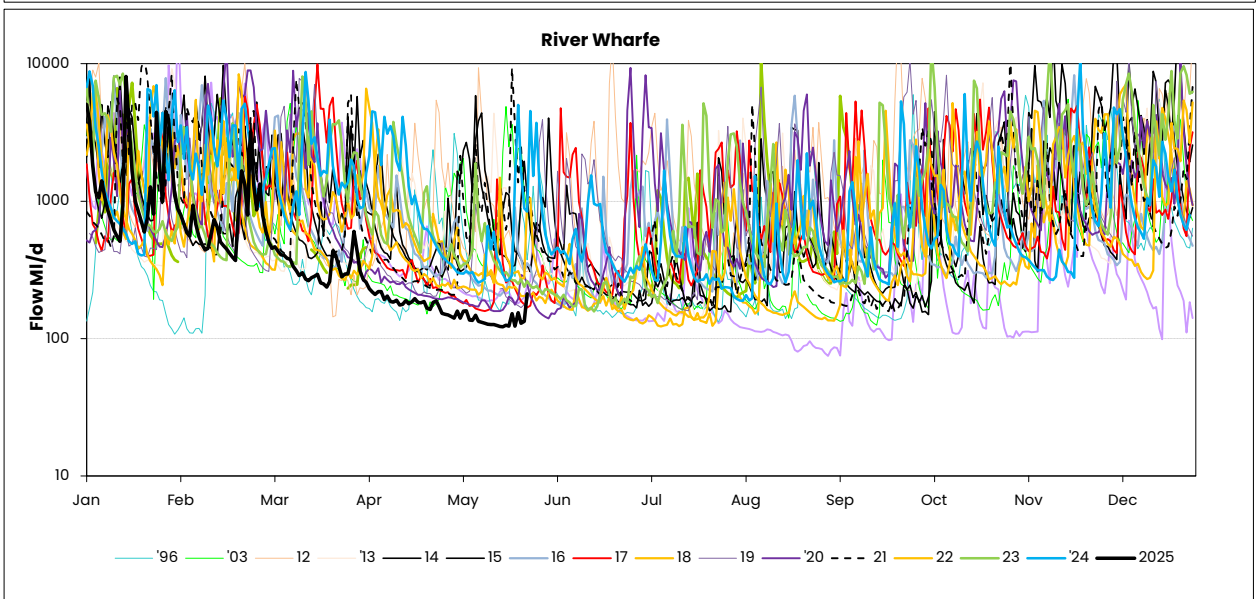
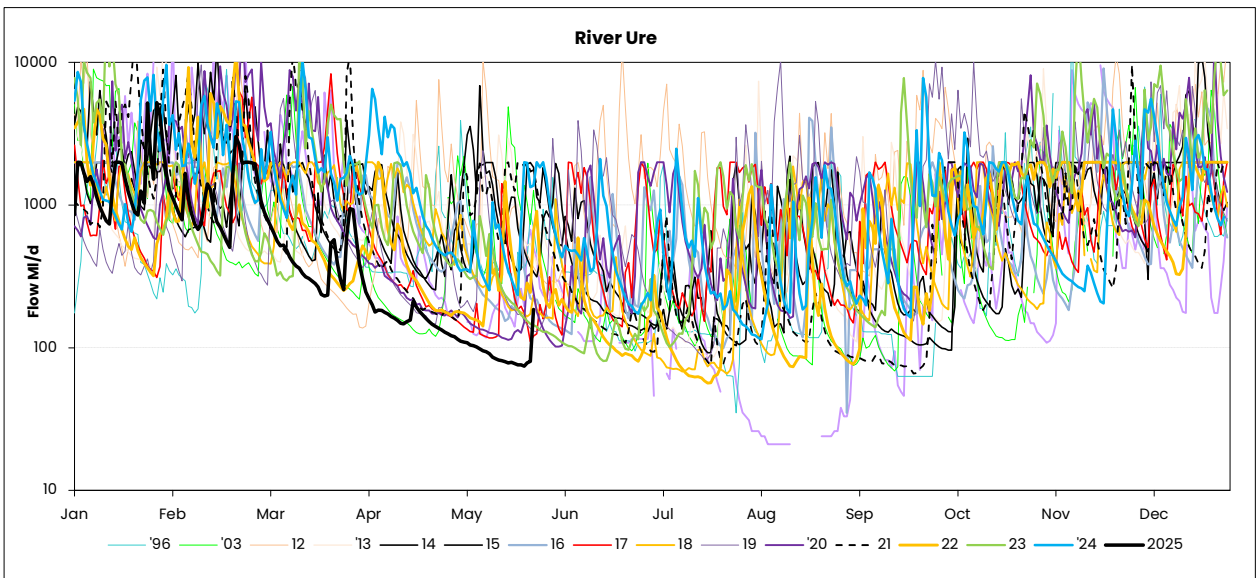
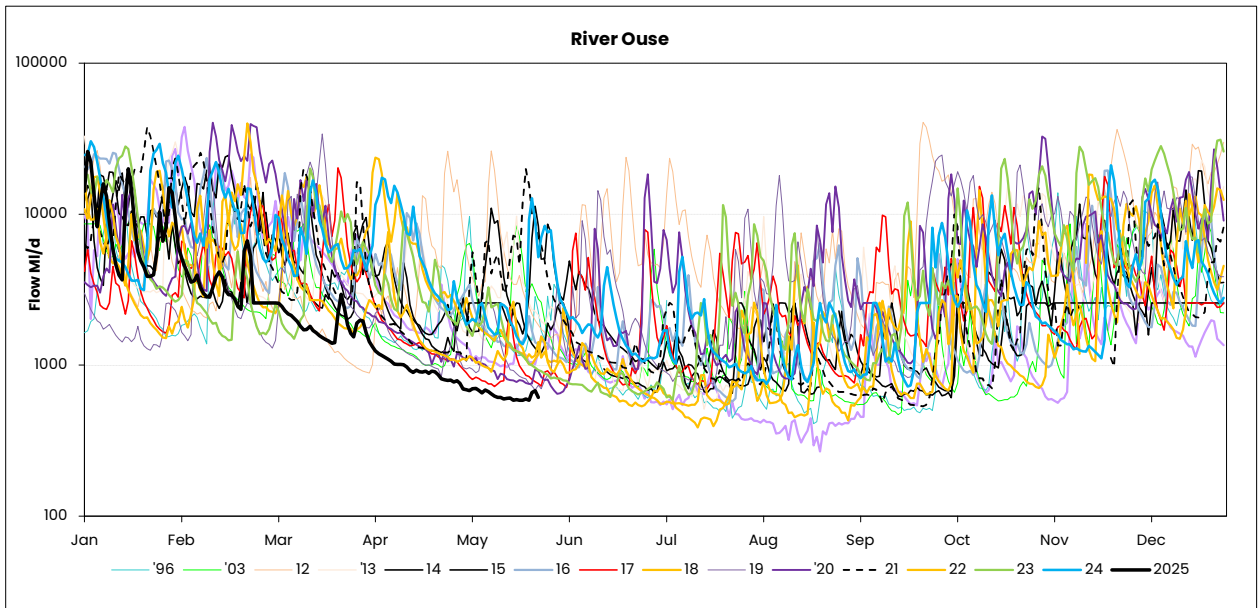
5. Comments

RIVER FLOWS

26 May 2025

	Mon 26-May	Mon 19-May	Mon 12-May	Mon 05-May	Critical flow bands
Derwent	531	499	536	574	305
Hull (using gauged (residual flows) only from 20	148	155	209	246	45 / 159 / 227
Ouse	611	589	624	697	400 / 650 / 1000
Ure	186	79	91	108	50 / 163 / 300
Wharfe	✘ 212	✘ 125	✘ 129	✘ 159	252 / 389 / 488 / 580





Yorkshire Region (Met Office)				England/Wales	
Month	mm	LTA	LTA(%)	mm	LTA(%)
October	72	84	86%	96	97%
November	51	89	57%	84	82%
December	108	90	120%	97	93%
January	82	80	103%	100	108%
February	37	70	53%	57	78%
March	26	60	43%	16	25%
April	11	58	19%	34	56%

SOURCE OF DATA : Hydrological Summary of Gt Britain, Institute of Hydrology

Yorkshire Water Services Data			
Rainfall Station	Total May	LTA May	LTA % May
Tophill	NDA	39	0%
Cottingham	NDA	41	0%
Bridlington	NDA	46	0%
Roundhill	8.7	88	10%
Fewston	12.2	69	18%
Osmotherley	13.2	47	28%
Scar House	20.9	107	20%
Watersheddes	18.4	97	19%
Gt Walden Edge	15.0	91	16%
Walshaw Dean	22.9	100	23%
Blackmoorfoot	12.2	89	14%
Ramsden	15.8	111	14%
Redmires	10.5	83	13%
Langsett	NDA	84	0%
YORKSHIRE REGION	15.0	87.8	17%
EAST REGION	13.2	47.0	28%
PENNINE (WEST)	15.2	92.8	16%

NDA= No data available/lack of readings, impacts % LTA for the month
SOURCE OF DATA : YWS RAIN GAUGES- weekly, so monthly data may include previous month or miss start of month

MAJOR SOURCE OUTPUTS

26 May 2025

22/05/2025

	Operational Maxima & Design Yields (Ml/d)	WRAP Targets Week Beginning - 22/05/2025	Daily Average Previous 5 Days Starting - 22/05/2025	WRAP Targets Week Starting - 15/05/2025	Daily Average Week Starting - 15/05/2025
WATER TREATMENT WORKS					
CENTRAL					
ECCUP NO 1 WTW	100	53.0	54	54	54
ECCUP NO 2 WTW	60	44.0	49	44	53
HEADINGLEY	95	63.0	73	63	73
HARLOW HILL	41.5	27.0	26	27	26
THORNTON STEWARD	22.5	19.7	25	20	23
EAST					
EAST NESS	17	8.0	8	8	10
IRTON	23.5	13.0	15	13	16
RUSWARP	12	7.0	7	7	8
TOPHILL LOW	68	40.0	39	40	39
KELDGATE	90	60.0	77	60	71
NORTH WEST					
CHELLOW	175	148.0	167	148	156
GRAINCLIFFE	60	38.0	34	38	43
SLADEN VALLEY	12	8.0	8	8	8
OLDFIELD	10.1	6.0	5	6	5
EMBSAY	25	17.0	22	17	21
SOUTH					
INGBIRCHWORTH	20	20.0	20	20	13
LANGSETT	56	36.0	53	36	47
(TOTAL)	75	56	72	56	60
EWDEN	40	35.0	35	35	36
LOXLEY	40	26.0	40	26	38
(TOTAL)	80	61	75	61	74
RIVELIN	75	64.0	43	64	46
SOUTH WEST					
ALBERT	55	51.0	45	51	47
FIXBY	30	21.0	20	21	21
KIRKHAMGATE	30	17.0	21	17	20
(TOTAL)	115	89	86	89	87
BLACKMOORFOOT	23	20.0	21	20	20
LONGWOOD	32	27.0	20	27	22
(TOTAL)	55	47	41	47	43
HOLMBRIDGE	29	19.0	22	19	20
GRID					
ELVINGTON	260	159	189	159	186
LOFTSOME BRIDGE	110	75	39	75	26

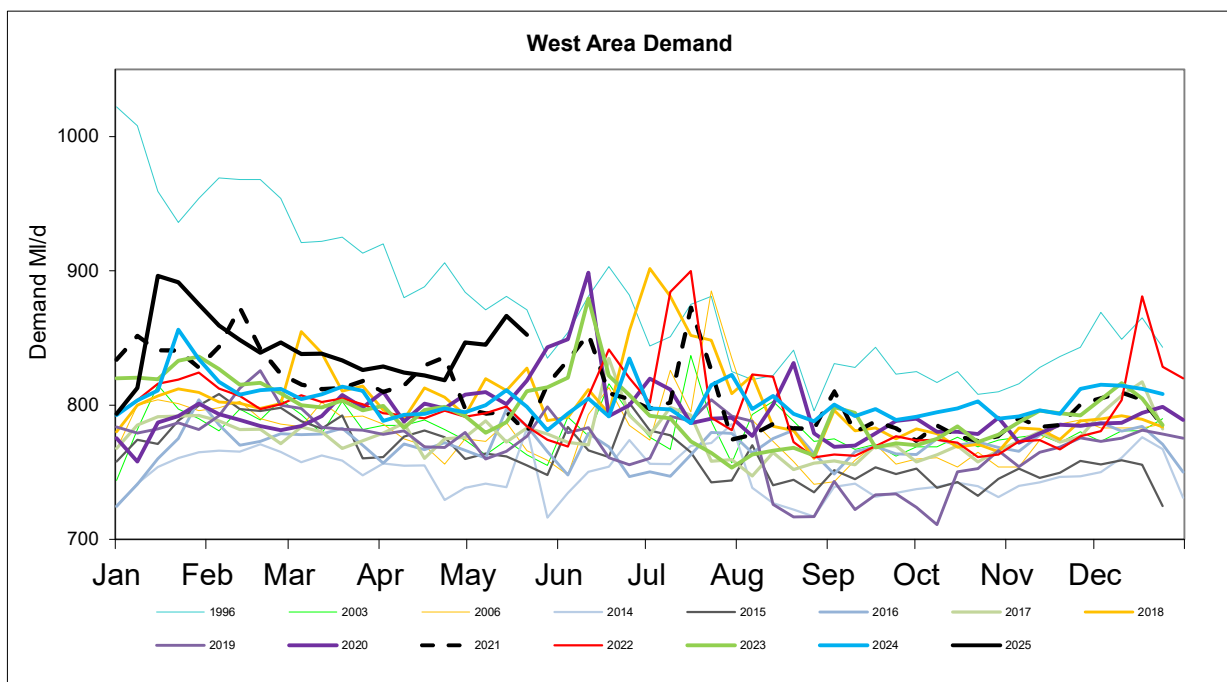
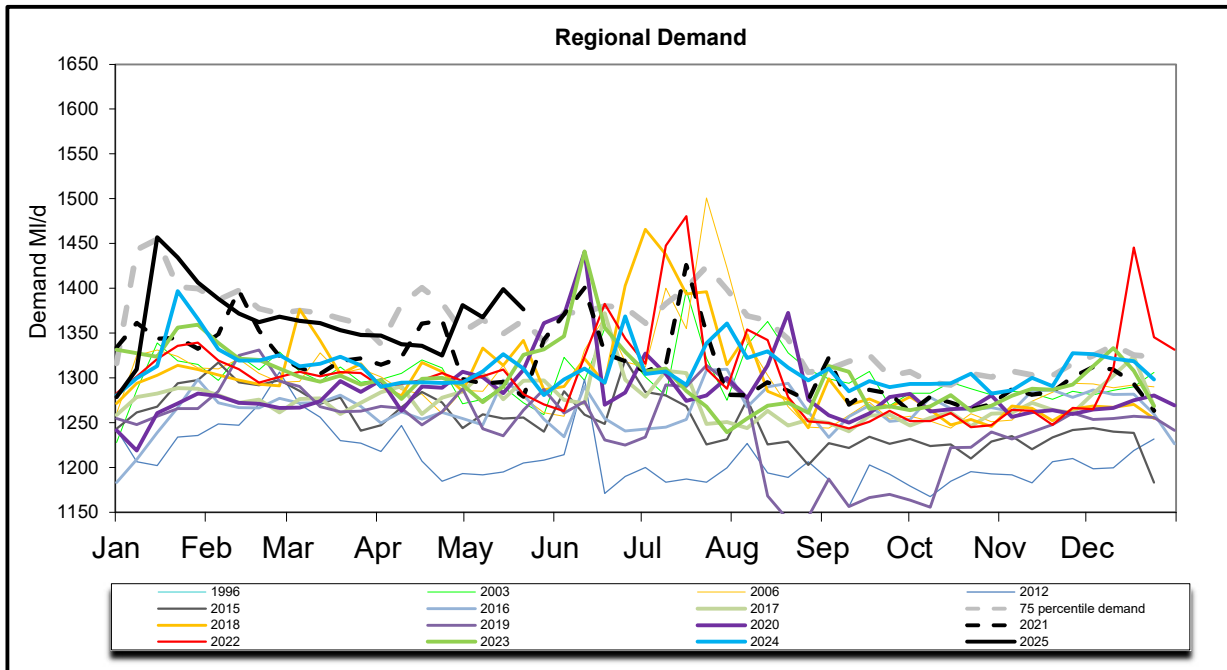
Daily Average Demand MI/d

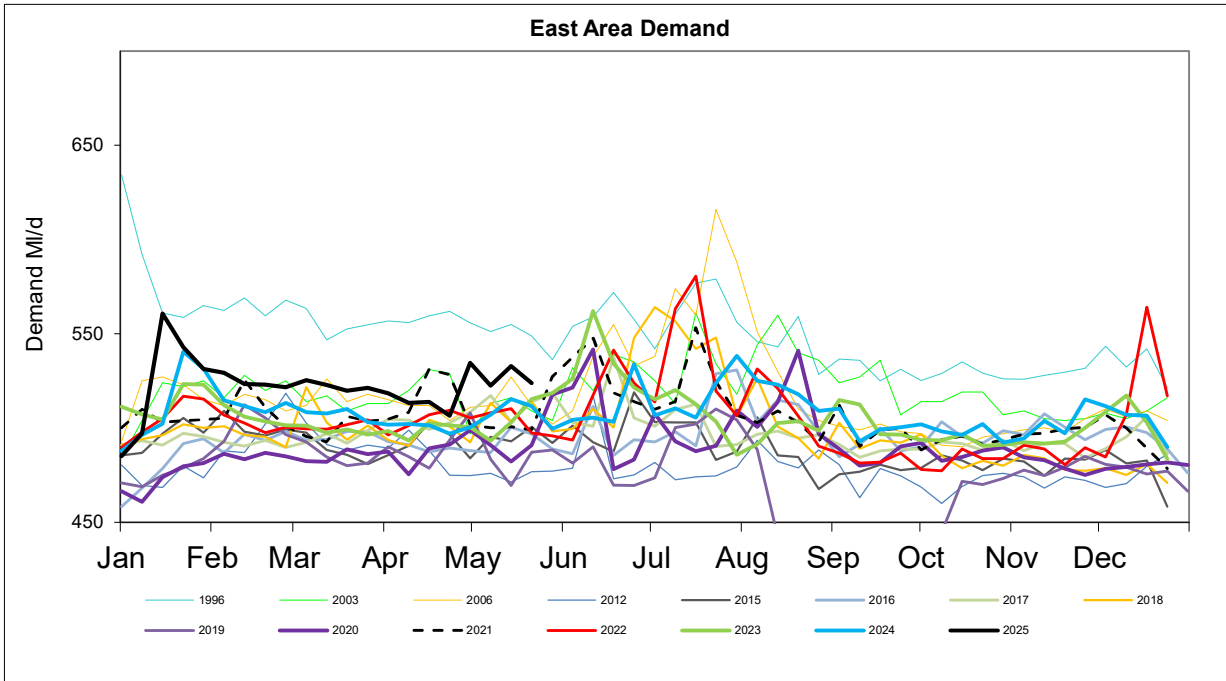
Week Ending Wednesday	L E E D S	W A K E + R F I E L D	M O B Y	H A R R O G A T E	H U L L	M A L L T O N	S H E F F / B L Y	D O N C A S T E R	B R A D F O R D	C A L D E R	S K I P T O N	Y O R K A	R E G I O N
23/04/2025	163	79	42	78	162	56	278	83	145	151	39	48	1325
30/04/2025	175	81	44	82	169	58	287	85	150	159	40	52	1381
07/05/2025	172	82	43	84	162	58	283	89	148	158	41	47	1367
14/05/2025	173	82	46	85	167	59	289	91	155	162	42	49	1399
21/05/2025	170	80	45	84	163	58	289	90	150	157	42	49	1376

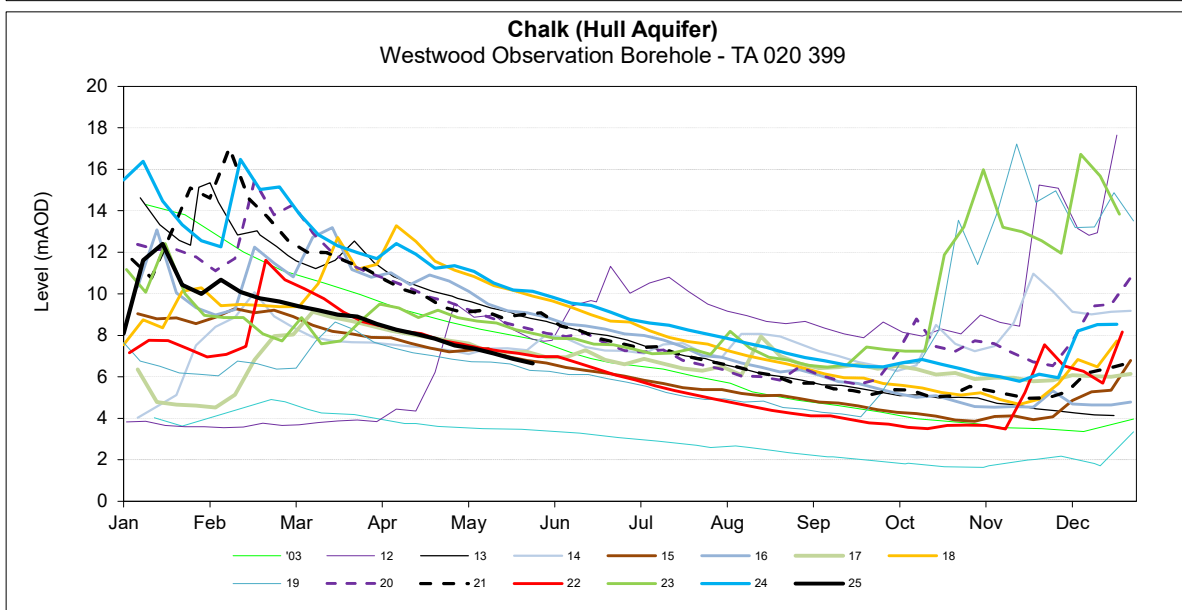
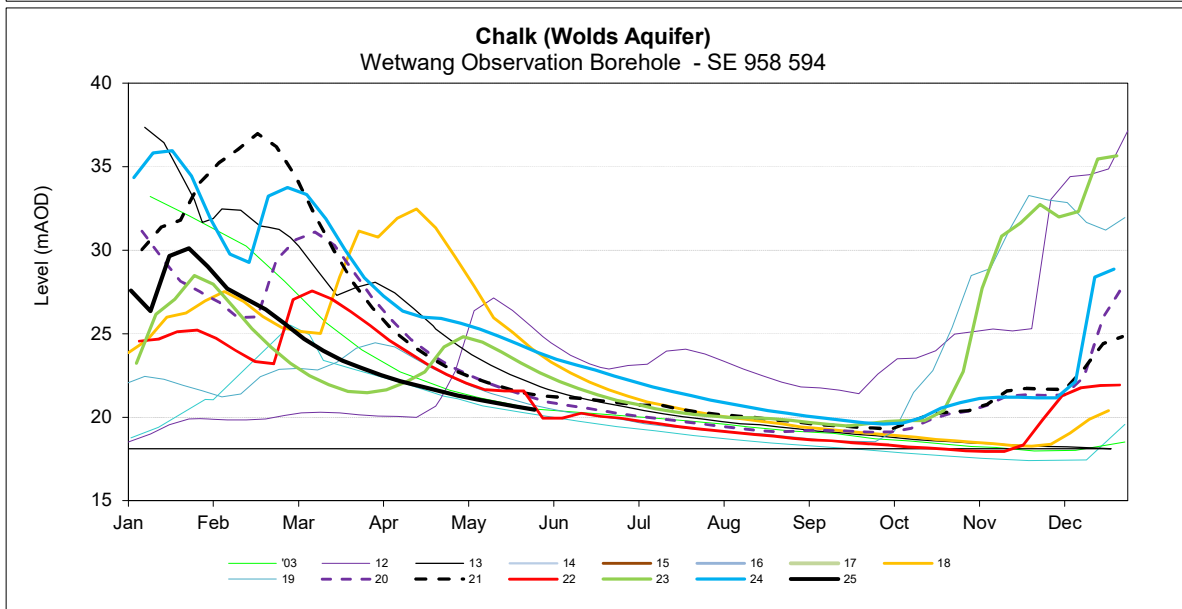
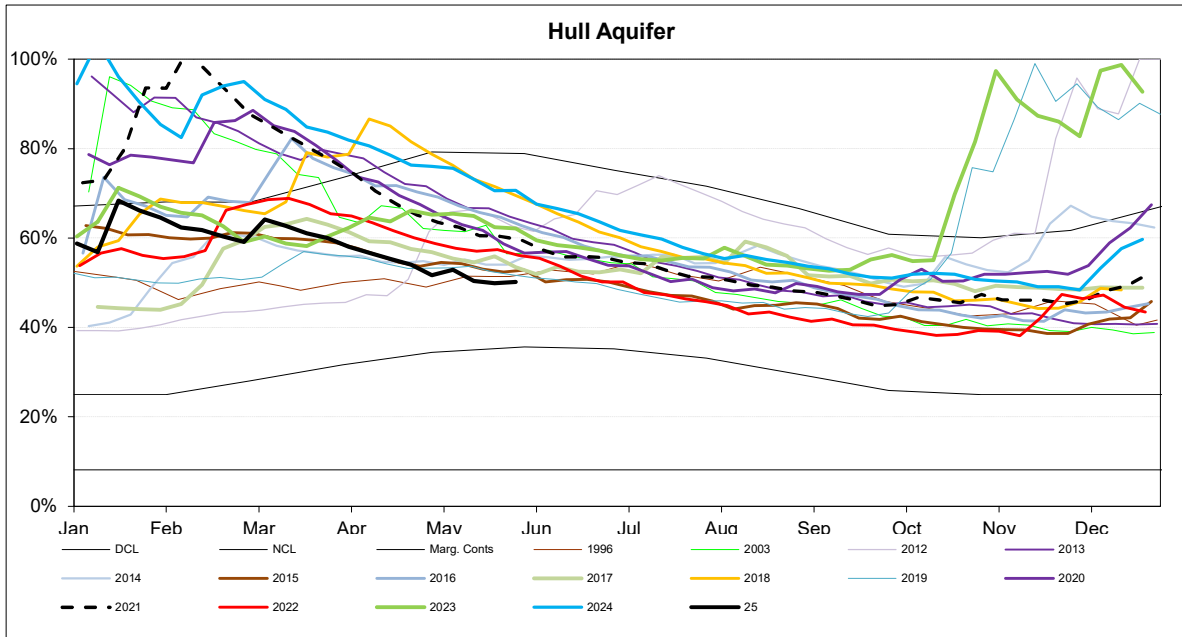
MONTHLY DEMANDS FROM WIS REPORT

Mar-25	175	78	42	80	163	53	283	83	148	158	40	50	1355
Apr-25	168	79	43	79	166	56	280	84	147	156	40	48	1346

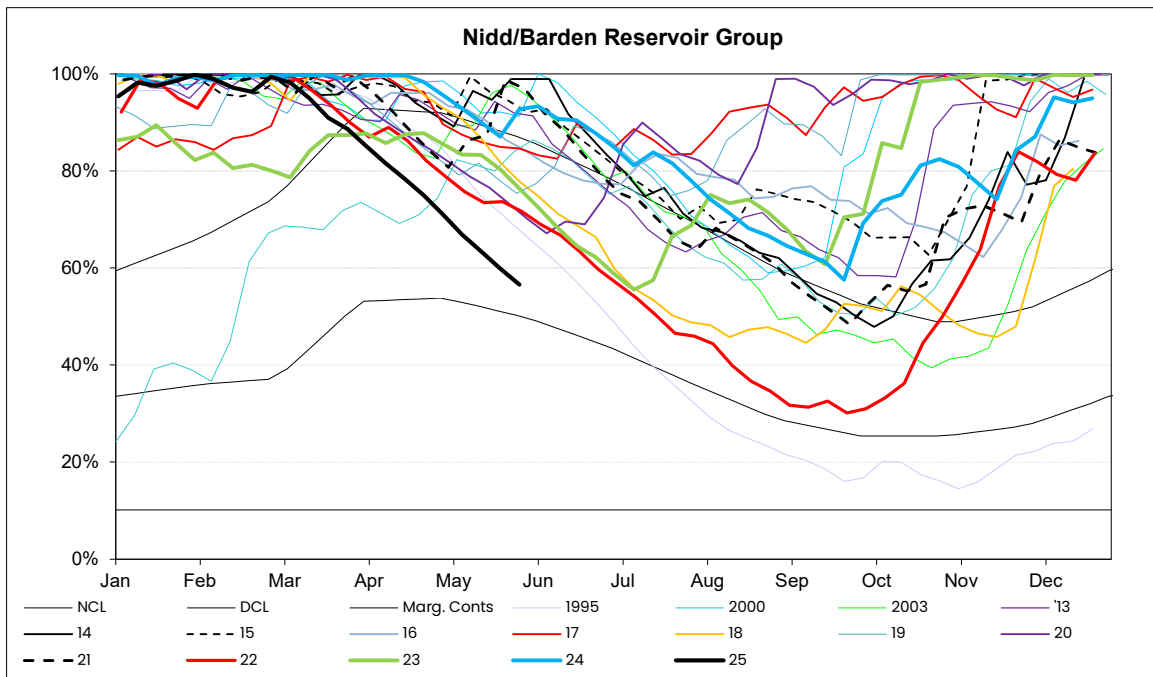
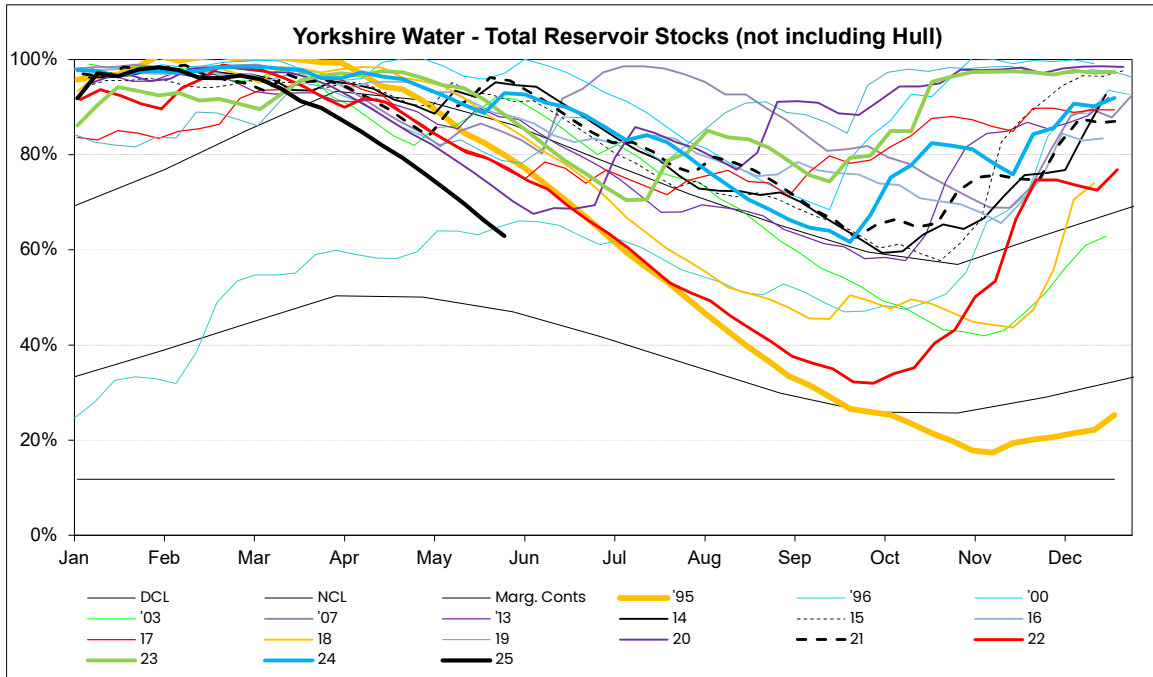
NB Current month demands include some estimates for minor sources and are not exactly comparable with previous months' figures.

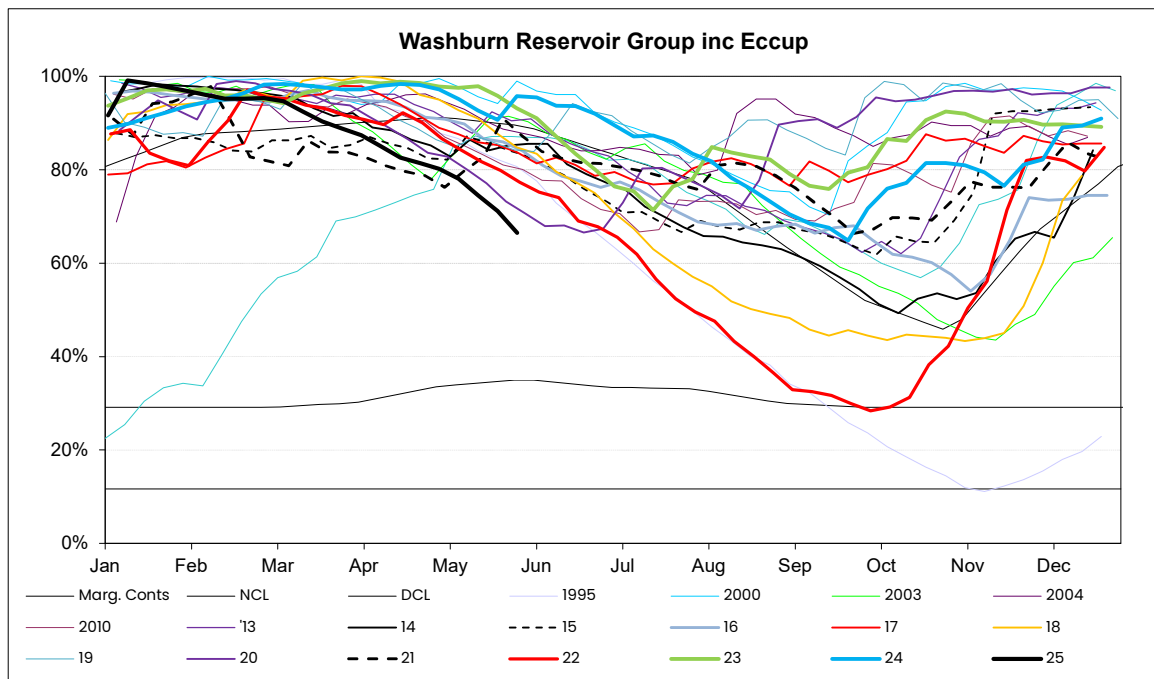
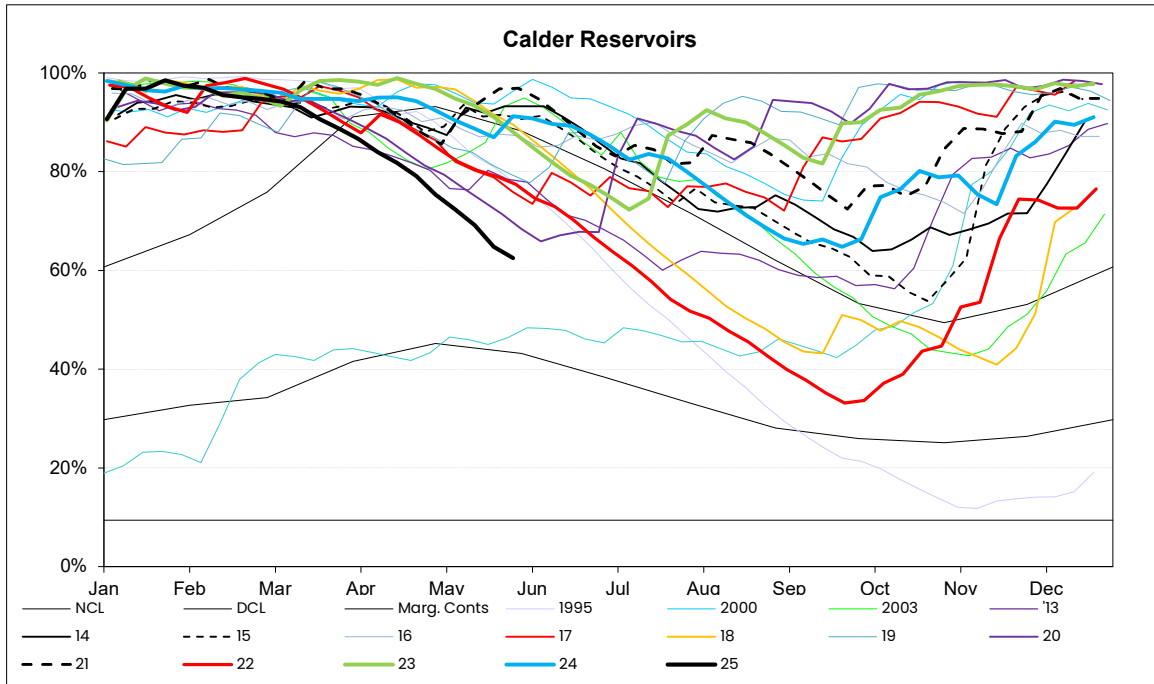


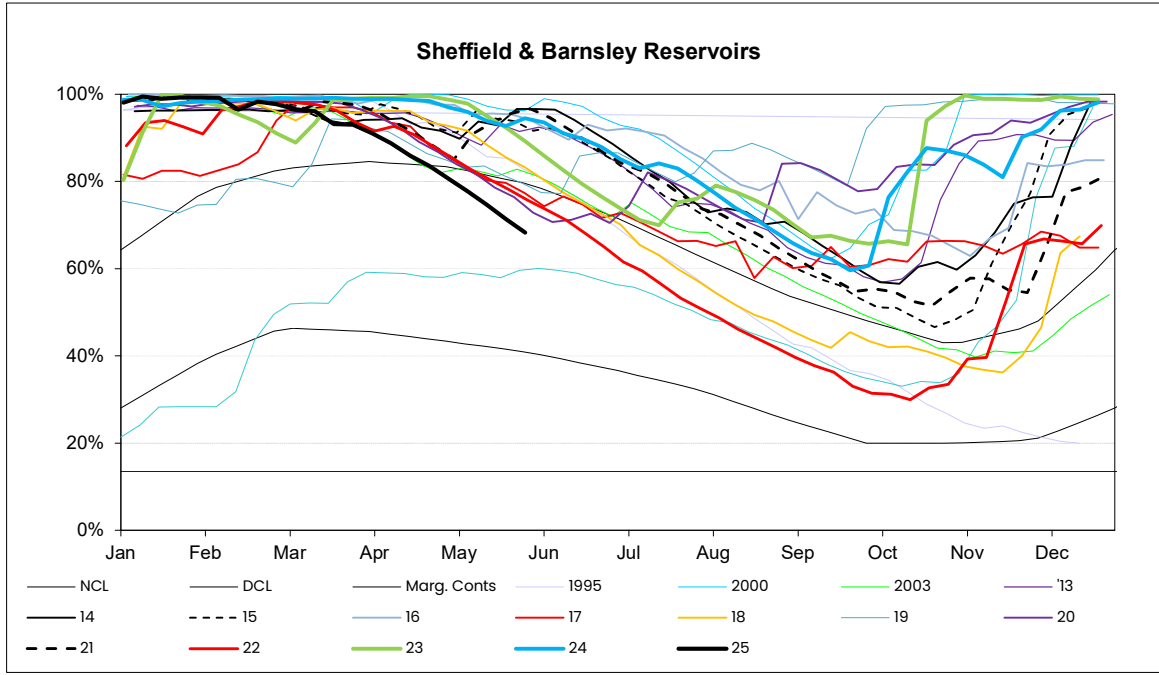




RESERVOIR STOCKS	26/05/2025		% Change	Planned Reservoir Safety Work	Required Drawdown & Duration	
Reservoir Group	% Stocks @	% Change	last week	Reason for Drawdown		
Calderdale (excl Withens Clough)	58.4%	-2.0%	-6.1%			
Boothwood/Ryburn (incl WC)	64.4%	-2.4%	-3.6%			
(Gorpley)	54.6%	-2.2%	-2.4%			
Huddersfield	63.3%	-1.6%	-4.4%			
Brownhill/Digley	64.0%	-4.1%	-3.2%			
Walshaw Dean Lower	46.4%	-4.3%	-15.8%	OSA Repairs	Apr 25 - May 25	86.0%
Widdop	20.7%	-6.8%	-9.1%	Increase Drawdown Capacity	May 25 - June 25	21.0%
Widdop	20.7%	-6.8%	-9.1%	Increase Drawdown Capacity	June 25 - Aug 25	10.0%
Brownhill	69.7%	-5.4%	-1.8%	Leakage Investigation	Apr 25 - Sept 25	51.0%
Longwood Comp IRE	N/A	N/A	N/A	Spillway Grouting	TBC	40.0%
Longwood ESR	N/A	N/A	N/A	Pipework Painting	TBC	76.0%
Calder Area Total	62.4%	-2.3%	-4.5%			
Nidd/Barden/Chelker	56.6%	-3.3%	-3.5%			
Grimwith	55.6%	-3.5%	-4.1%			
Worth Valley	62.9%	-2.8%	-3.0%			
March Ghyll	78.9%	-0.8%	-1.6%	Embankment Stability Works	Jan 23 - Dec 24	86.0%
Ponden	72.5%	-4.4%	-4.7%	Repair Ground Anchor	Aug 24 - Mar 25	87.6%
Chelker	91.4%	-2.3%	0.0%	Pointing	Nov 24 - May 25	34.0%
Chelker	91.4%	-2.3%	0.0%	Pointing	Nov 24 - May 25	78.0%
North West Area Total	57.6%	-3.3%	-3.6%			
Washburn/Eccup Resrs.	66.5%	-4.6%	-3.4%			
Thornton Steward	87.4%	0.7%	1.3%			
Leighton/Roundhill	61.8%	-4.8%	-4.8%			
Haverah Park	78.5%	-1.6%	9.1%			
Swinsty	50.0%	-1.7%	-0.3%	Outlet Channel Repairs	Dates tbc	93.0%
Thruscross	80.7%	-3.4%	-3.0%	Bridge Repairs	Dates tbc	TBC
Cod Beck	100.0%	0.0%	0.0%	Inspection of Overflow and Upstream Face	Aug 24 - Mar 25	83.0%
Randy Mere	N/A	N/A	N/A	Upstream Face Repairs	TBC	17.0%
North Area Total	66.2%	-4.4%	-2.5%			
Don Valley & Winscar	75.5%	-2.3%	-2.4%			
Rivelin Valley	93.6%	-2.4%	0.4%			
Little Don	60.9%	-3.0%	-3.8%			
Ewden Valley	61.2%	-4.9%	-4.3%			
Loxley Valley	68.5%	-3.9%	-3.9%			
Redmires	52.5%	-2.0%	-2.6%			
Redmires Upper	40.4%	0.3%	-0.1%	Damage to Overflow Channel	Nov 23 - Oct 25	98.0%
Redmires Middle	60.3%	-1.5%	-1.0%	Damage to Overflow Channel	Nov 23 - Oct 25	89.0%
Redmires Middle	60.3%	-1.5%	-1.0%	Issues with Sheet Piles	Feb 25 - Oct 25	95.0%
Broomhead	70.8%	-4.9%	-4.3%	Install Overflow Debris Barrier	June 24 - Feb 25	95.0%
Strines	70.8%	-5.0%	-3.2%	Overflow Investigation	Apr 25 -Sept 25	58.0%
South Area Total	64.6%	-0.3%	-1.8%			
Tophill Low	78.3%	1.1%	-0.9%			
Hull Aquifer	50.2%	0.3%	-0.5%			
East Area Total	52.5%	0.3%	-0.5%			
Regional Total (DCP) (inc East Area)	61.7%	-2.8%	-3.4%			
YORKSHIRE TOTAL (Supply) (not inc East Area)	62.9%	-3.2%	-3.7%			

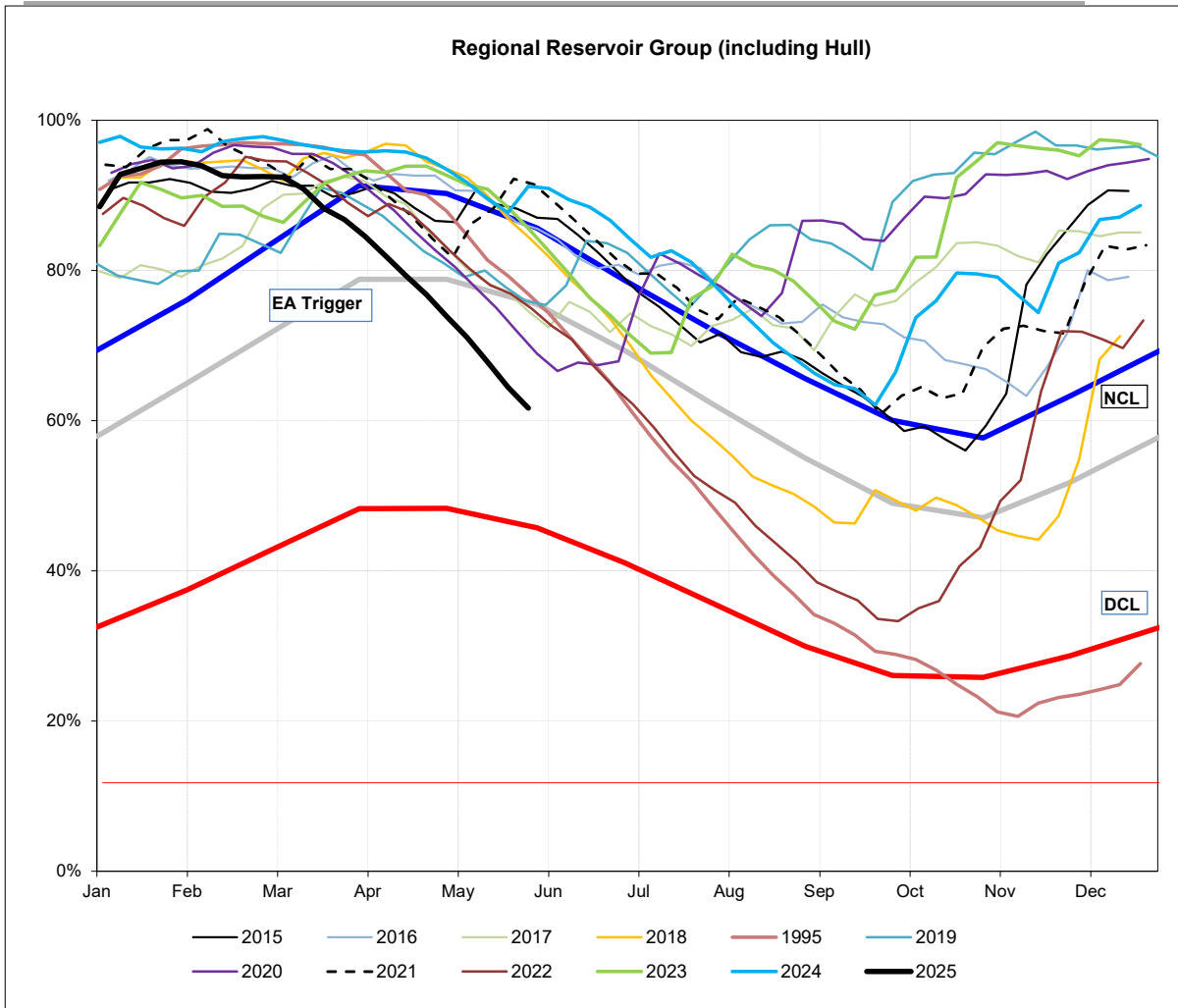




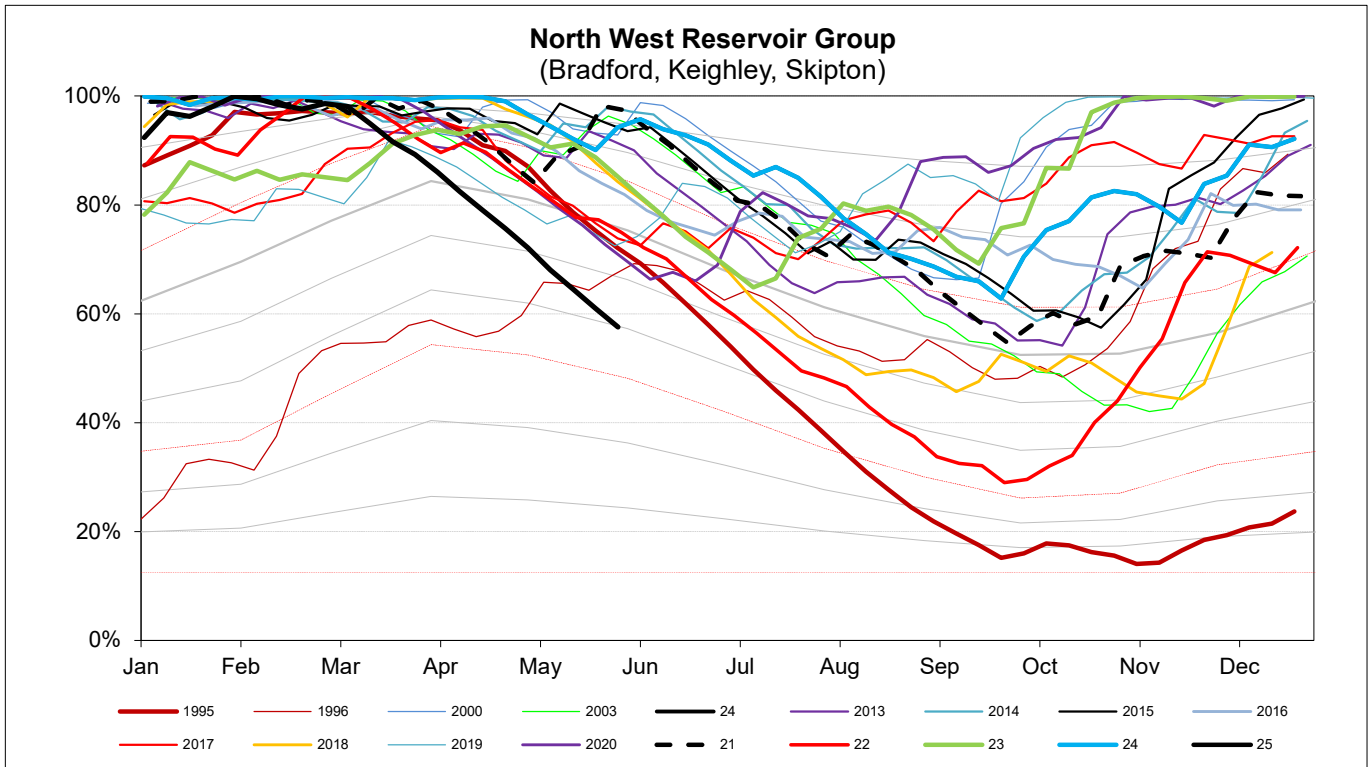
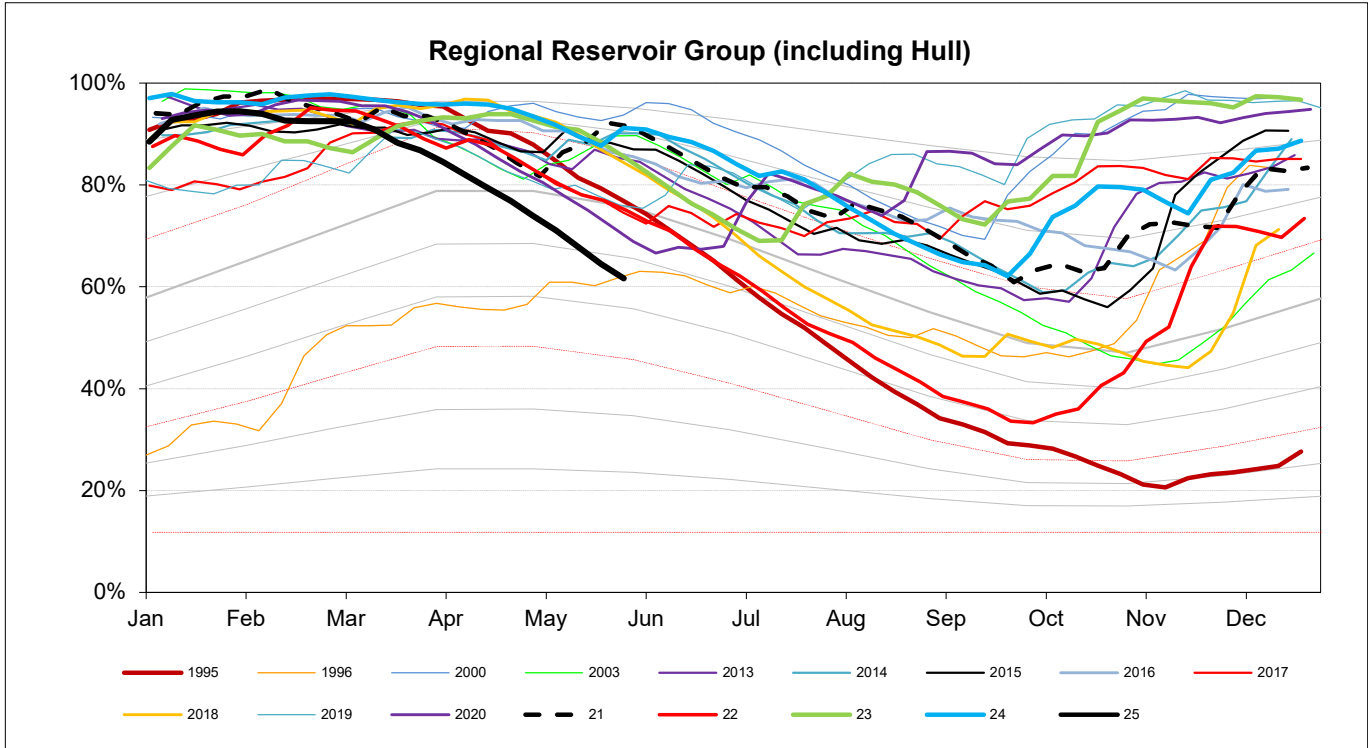


EA STOCKS REPORT
26 May 2025

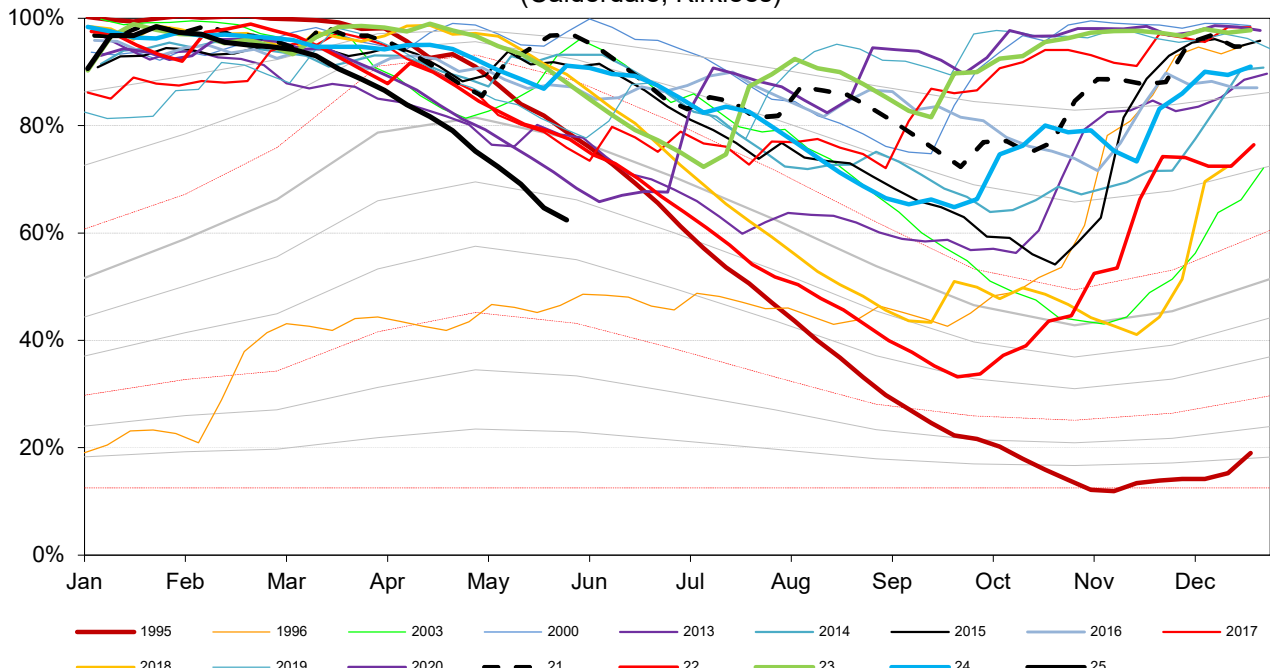
EA Stocks Report		26/05/2025					
	MI	%	% change		MI	%	% change
South West Area Supply Reservoirs				South Area Supply Reservoirs			
Calderdale Group	6500	58.4%	-2.0%	Don Valley	1620	77.9%	-0.6%
Huddersfield Group	8936	63.3%	-1.6%	Little Don	4490	60.9%	-3.0%
Brownhill/Digley excl Holme	3575	63.7%	-4.2%	Ewden Valley	3022	61.2%	-4.9%
Boothwood/Ryburn	7760	66.3%	-2.3%	Loxley Valley	4711	68.5%	-3.9%
				Rivelin	763	93.6%	-2.4%
South West Reservoir Group	27494	62.4%	-2.3%	Redmires	1459	52.5%	-2.0%
Bradford Area Supply Reservoirs				South Reservoir Group			
Gouthwaite	2996	51.6%	-1.8%	South Reservoir Group	16064	64.6%	-3.3%
Grimwith	12109	55.6%	-3.5%	Winscar Group	7044	75.0%	-2.8%
Nidd/Barden/Chelker	10852	56.6%	-3.3%	Compensation Reservoirs			
Rombalds/Thornton Group	1433	64.2%	-4.2%	Scout Dike	454	65.4%	-2.4%
Skipton Area Supply Reservoirs				Underbank	2398	83.6%	-3.0%
Embsay	704	97.4%	2.0%	Morehall	1493	68.7%	-2.5%
Worth Valley Group	2082	62.9%	-2.8%	Damflask	3960	77.6%	-2.6%
				North Area Supply Reservoirs			
North West Reservoir Group	27180	57.6%	-3.3%	Washburn	15547	66.5%	-4.6%
Compensation inc Silsden	1468	62.4%	-2.8%	Eccup	4618	65.9%	-5.6%
Gouthwaite	2996	51.6%	-1.8%	Leighton/Roundhill	4573	61.8%	-4.8%
March Ghyll & Elslack Reservoirs excluded for consistency with stocks predictions in WRAPSIM				Haverah Park	786	78.5%	-1.6%
East Area Supply Reservoirs				Lumley Moor	271	71.1%	-1.5%
Tophill Low	1318	78.3%	1.1%	Thornton Steward	829	87.4%	0.7%
Hull Aquifer	9539	50.2%	0.3%	North Reservoir Group	22006	66.2%	-4.4%
				Lindley Wood Compensat	1181	40.4%	-4.4%
East Reservoir Group	10857	52.5%	0.3%	Regional Reservoir Group	110646	61.7%	-2.8%
(sum of South West, North West, East, South, North & Winscar Reservoirs)							



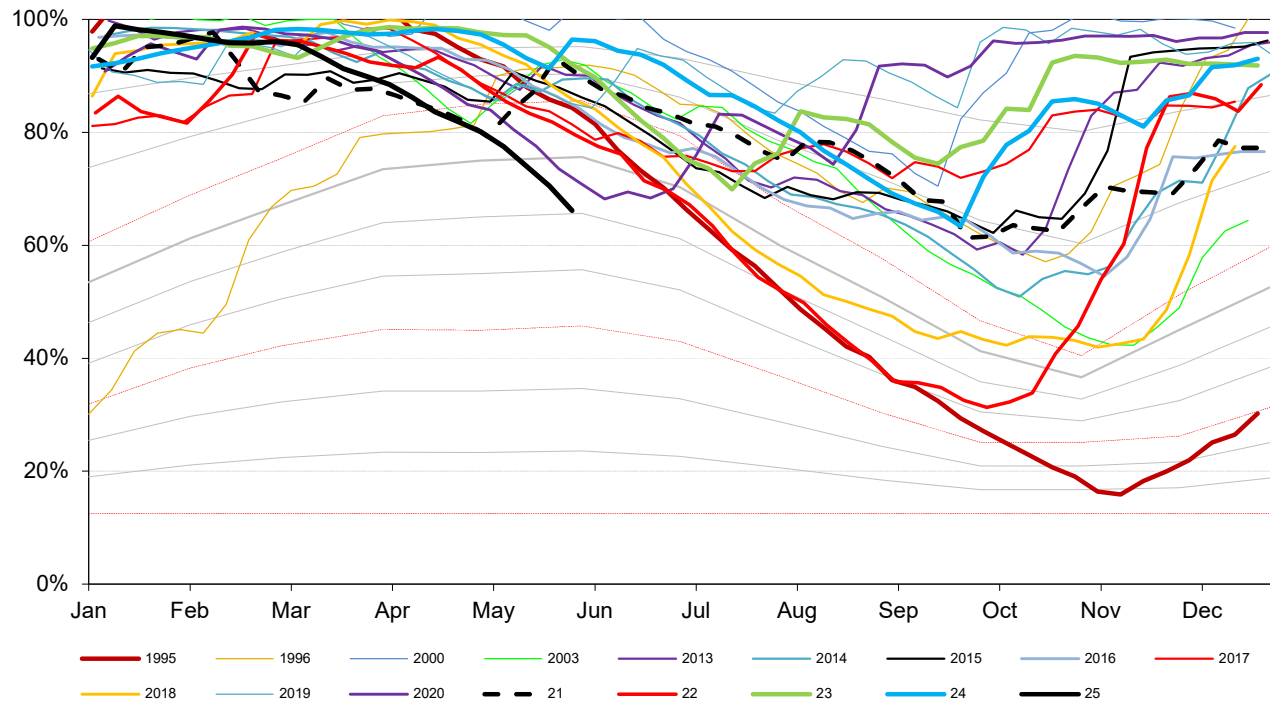
Triggers	
EA early warning (CL4)	Water resources to advise EA on production
Hosepipe Restrictions	When projected falling stocks fall below DCL
Drought Orders	When stocks are below DCL.



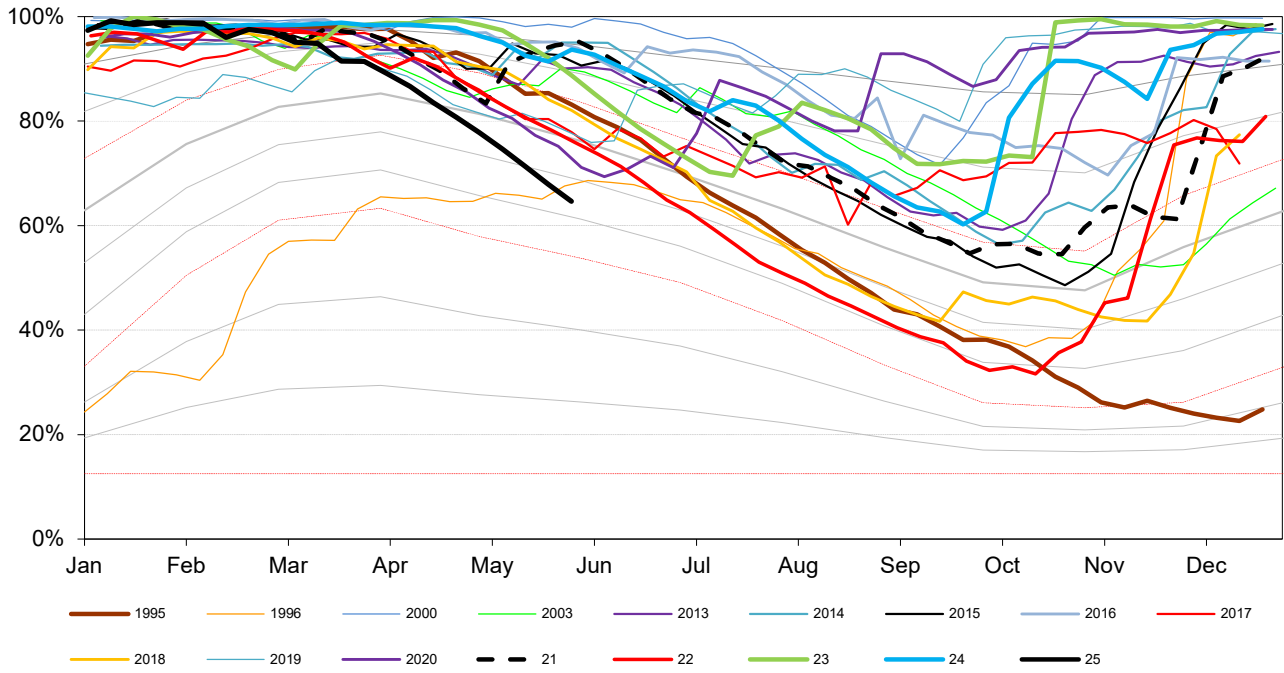
South West Reservoir Group (Calderdale, Kirklees)



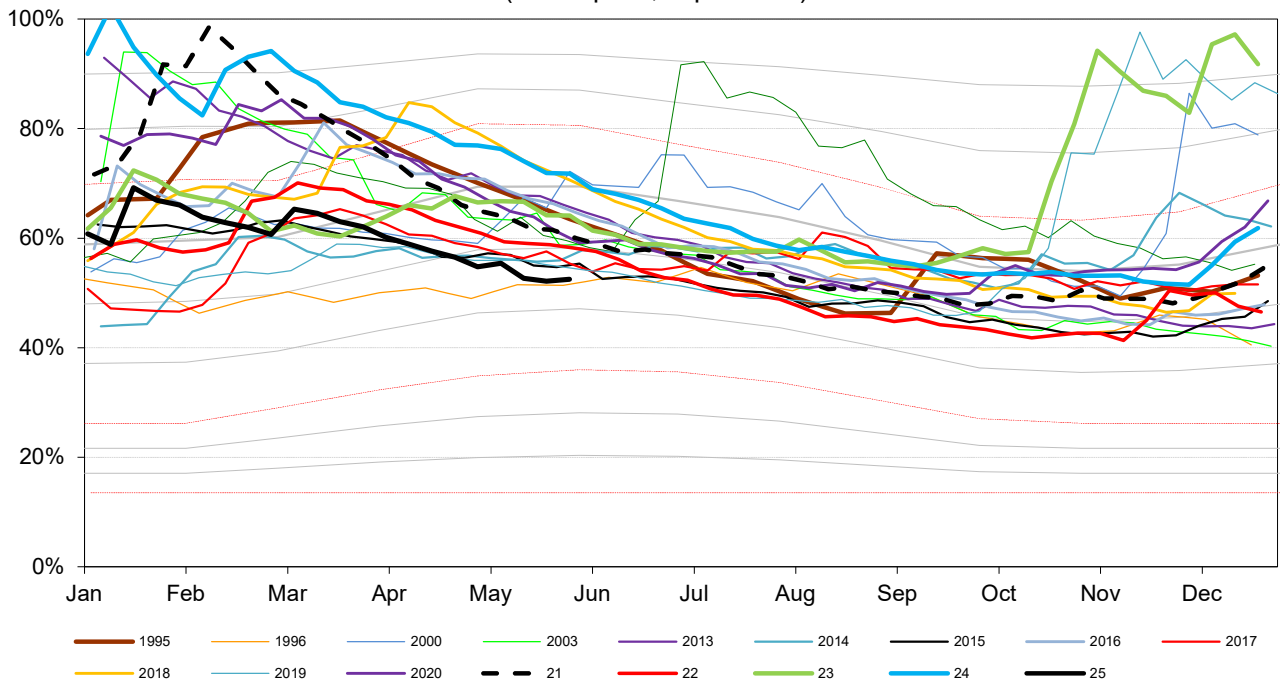
North Reservoir Group (Leeds, Harrogate)

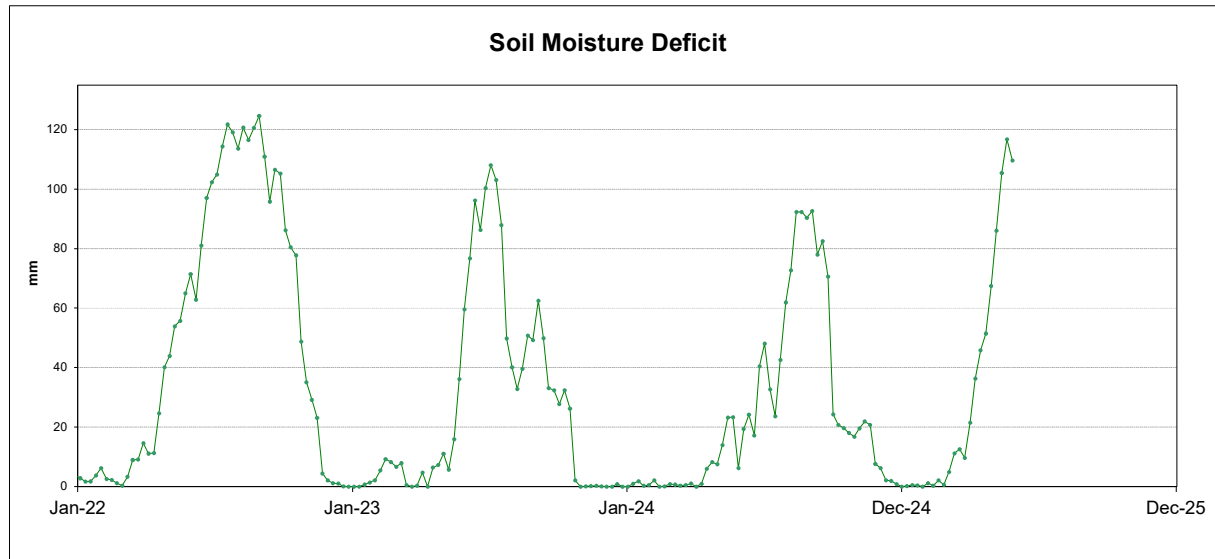
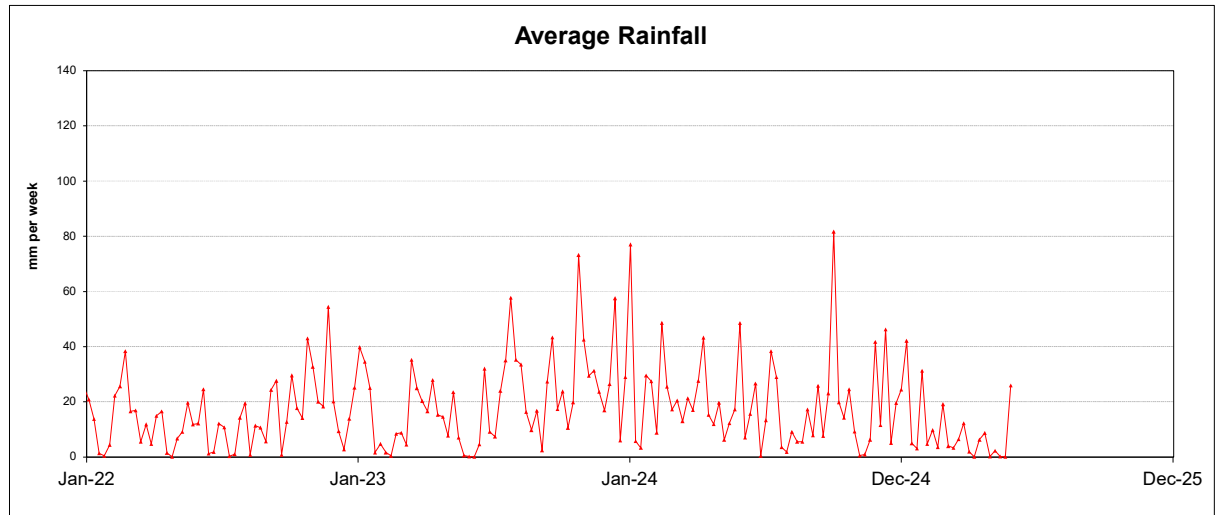
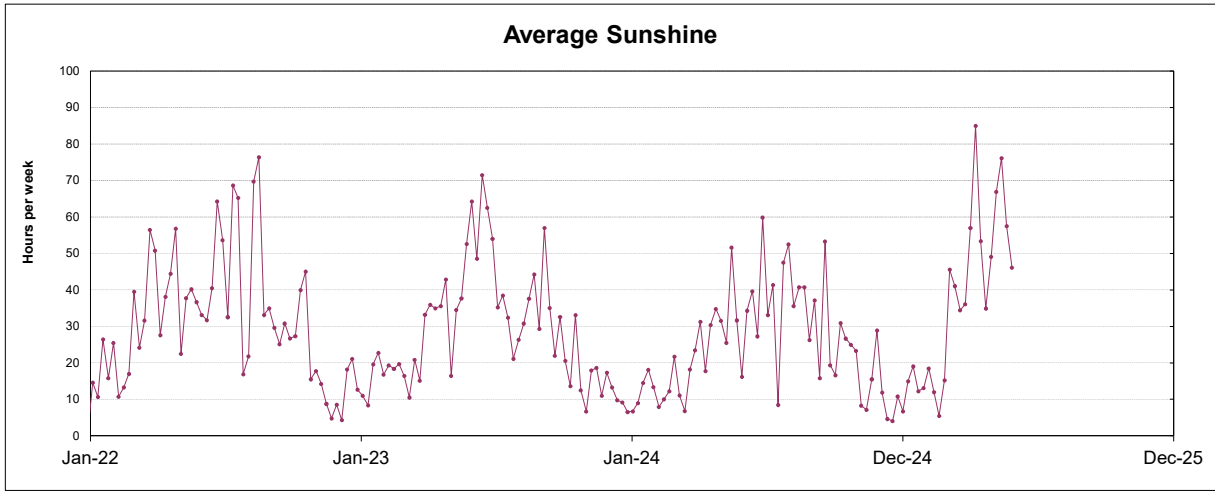


South Reservoir Group
(Sheffield, Barnsley)



East Reservoir Group
(Hull Aquifer, Tophill Low)





This page will normally be updated monthly (approx mid month).

This data may be subject to change following routine validation checks.

Where showing a negative value, this is normal at certain sources, due to the imports of water into that source being greater than the volumes abstracted.

Units in MI

Serial No	Source	Reporting Year	Run date			
			April	Year to date MI	Annual Limit	% of Annual Limit
02/27/023/332	Ainderby Steeple Boreholes	C	125.5	499	1760	28.4%
03/28/083/010	Armthorpe Boreholes	C	243.0	938	3319	28.3%
03/28/083/012	Austerfield Boreholes	C	219.9	867	11615	7.5%
02/27/022/020	Aysgarth & Newbiggin Springs	C	16.3	62	341	18.2%
02/27/012/035	Baitings, Ryburn & Blackhouse reservoirs	C	322.5	1585	20457	7.8%
02/27/023/032	Bellerby Borehole and springs near Bellerby	F	73.3	73	1250	5.9%
02/27/022/209	Birk Gill & River Burn	C	9.9	1512	6400	23.6%
02/27/012/254	Boothwood Reservoir & associated catchwaters	C	347.9	1185	20457	5.8%
02/27/10/112	Boshaw Whams Reservoir	C	0.0	0	55	0.0%
03/28/083/105	Boston Park Boreholes	C	178.7	728	3318	21.9%
02/27/024/305	Brayton Barff Boreholes	C	0.0	0	2250	0.0%
02/26/030/002	Bridlington	C	178.4	689	2500	27.6%
02/27/005/031	Broomhead Reservoir	F	954.8	955	12410	7.7%
02/26/030/004	Burton Agnes	C	76.3	297	1000	29.7%
02/27/018/080	Carlton Hanger Lane Boreholes	C	256.9	1201	3500	34.3%
02/27/018/079	Carlton Mill Lane Boreholes	C	161.6	646	3800	17.0%
02/27/019/009	Carr Bottom Reservoir, Burley Woodhead	C	0.0	18	409	4.4%
02/27/023/340	Catterick Boreholes	F	197.4	197	3650	5.4%
02/27/027/136	Cayton Carr Lane Boreholes	C	10.3	43	3928	1.1%
02/27/027/163	Cayton Station Road Borehole	C	170.1	646	2646	24.4%
02/27/019/137	Chelker Reservoir	C	74.0	774	5000	15.5%
02/27/023/031	Coalsgarth Springs	C	8.3	35	750	4.7%
02/27/011/064	Colne Valley Catchwaters	F	524.3	524	5840	9.0%
02/26/032/126	Cottingham Well	C	1081.5	4161	18184	22.9%
02/27/018/081	Cowick Boreholes	C	366.0	1446	5250	27.5%
02/27/023/046	Cranehow & Downholme Springs	C	0.0	0	318	0.0%
02/27/023/030	Crumma, Newsham & Gandale Springs	C	56.8	241	1364	17.7%
02/27/005/030	Dale Dyke & Agden Reservoirs	F	1109.2	1109	21412	5.2%
02/27/012/261	Dean Head & Scammonden	F	258.2	258	3650	7.1%
02/27/19/121	Dib Spring, Hawkswick	C	0.0	0	27	0.0%
02/26/032/126	Dunswell Well	C	446.5	1861	16593	11.2%
NE/27/025/021	East Ness Boreholes	F	301.9	302	5680	5.3%
02/26/031/087	Elmswell Wold Borehole	C	0.0	1	1273	0.0%
02/27/015/045	Embsay Reservoir	C	24.7	369	1846	20.0%
02/27/016/196	Esholt Sewage Treatment Works	C	0.0	0	88	0.0%
02/26/032/124	Etton Boreholes	C	100.8	437	5100	8.6%
03/28/083/012	Finningley Boreholes	C	309.3	1205	6780	17.8%
02/27/022/328	Fossdale (High Shaw) Springs	C	10.5	40	227	17.8%
02/27/018/120	Goosehouse Boreholes	C	217.5	704	3500	20.1%
02/27/012/043	Gorpley Reservoir	C	0.0	0	1823	0.0%
02/27/016/022	Graincliffe Reservoir	F	-7.1	-7	2728	-0.3%
02/27/012/037	Green Withens Ringstone Res & catchwater	C	388.3	1556	20457	7.6%
02/27/019/051	Greenhow Tunnel (Nidd Aqueduct) Dale Head Intake	C	0.0	0	214	0.0%
02/27/019/052	Greenhow Tunnel (Nidd Aqueduct) No.2 Access Shaft	C	0.0	0	6819	0.0%
NE/27/019/005	Grimwith Reservoir to Nidd Aqueduct	F	459.1	459	3650	12.6%
02/26/030/003	Haisthorpe Boreholes	C	228.9	971	5000	19.4%
03/28/083/012	Hatfield Boreholes	C	121.3	474	3319	14.3%
03/28/083/100	Hatfield Woodhouse Boreholes	C	0.0	0	3320	0.0%
02/27/029/010	Hazel Head Springs	C	47.0	197	1162	17.0%
02/27/012/041	Hebden, Luddenden & Hebble Valley Resrs	F	1120.0	1120	15695	7.1%
02/27/018/077	Heck Boreholes	C	0.0	0	2489	0.0%
03/28/083/012	Highfield Lane Boreholes	C	439.4	1727	11615	14.9%
02/27/023/685	Hollin Hill Borehole	F	3.4	3	45	7.6%
02/27/010/063	Holmestyes & Digley Reservoirs	F	211.6	212	5840	3.6%
02/27/22/024	Horsehouse Spring, leyburn	C	0.0	0	33	0.0%
02/27/027/002	Howe Hill Well	F	78.0	78	1014	7.7%
02/26/031/006	Hutton Cranswick	C	43.3	177	796	22.3%
02/27/005/012	Ingbirchworth Reservoir & Annat Royd Intake	C	152.1	942	3637	25.9%
02/27/005/202	Ingbirchworth South Borehole	F	4.1	4	132	3.1%

02/27/027/058	Irton	C	495.0	1934	8215	23.5%
02/27/21/015	John O'Gaunts and Beaverdyke Reservoirs	C	0.0	0	1909	0.0%
02/27/014/010	Keighley Moor Reservoir	F	33.5	34	6951	0.5%
02/27/025/128	Keld Head Boreholes	C	178.7	707	3319	21.3%
02/26/032/126	Keldgate Boreholes	C	276.9	1018	5819	17.5%
02/26/031/002	Kilham	C	24.8	37	1818	2.0%
02/27/005/032	Langsett Reservoir	F	872.9	873	17155	5.1%
02/27/022/210	Leighton Reservoir & Spruce Gill stream intake	C	802.1	2278	13184	17.3%
03/28/083/107	Littleworth Borehole	C	0.0	0	1659	0.0%
02/27/028/270	Loftsome Bridge ASR Borehole No.1	C	0.0	0	150000	0.0%
02/27/014/009	Lower Laithe Reservoir	F	224.5	224	6951	3.2%
02/27/005/011	Midhope Reservoir & Knoll Brook Intake	F	334.5	335	17155	1.9%
02/26/034/006	North Newbald	C	0.0	0	548	0.0%
03/28/083/012	Nutwell Boreholes	C	131.7	772	4983	15.5%
02/27/019/006	Panorama, Hilltop & Old Reservoirs & Springs	C	17.8	120	1000	12.0%
02/27/018/078	Pallington Boreholes	C	209.4	786	5000	15.7%
02/27/014/058	Ponden Reservoir	F	38.5	38	6951	0.6%
02/27/016/023	Reva Reservoir, Hawkesworth	C	11.3	363	1364	26.6%
02/27/005/029	Rivelin and Redmires Reservoirs	F	141.2	141	8030	1.8%
02/27/028/017	River Derwent at Elvington	F	5304.2	5304	75000	7.1%
02/27/028/083	River Derwent at Loftsome Bridge	F	1782.5	1782	30400	5.9%
02/27/029/012	River Esk	C	271.6	1076	7823	13.8%
02/26/031/047	River Hull & West Beck	C	1008.6	4299	25000	17.2%
02/26/032/194	River Hull for Sewer Cleaning	C	0.0	0	91	0.0%
02/27/024/078	River Ouse at Acomb	F	773.9	774	35000	2.2%
02/27/024/158	River Ouse at Moor Monkton	F	3161.8	3162	73000	4.3%
02/27/022/214	River Ure at Kilgram Bridge	F	216.4	216	15000	1.4%
02/27/020/196	River Wharfe at Arthington	F	9.7	10	19009	0.1%
02/27/019/129	River Wharfe at Lobwood	F	2253.0	2253	27392	8.2%
03/28/083/012	Rossington Bridge Boreholes	C	0.0	0	5172	0.0%
02/27/022/027	Roundhill and Lumley Moor Reservoirs	C	54.2	217	3500	6.2%
02/27/005/013	Royd Moor Reservoir & Intakes	C	94.1	583	2955	19.7%
02/27/021/016	Scargill Reservoir	C	54.4	321	1932	16.6%
02/27/021/092	Scarhouse & Angram Resvrs with tunnel & catchwater	C	2858.3	12346	38164	32.4%
02/27/15/149	Silsden Beck, Stilling-Basin at foot of Silsden Reservoir Emb	C	0.0	0	10	0.0%
02/26/032/126	Springhead Well	C	662.8	2696	13638	19.8%
02/27/022/021	Stalling Busk & Marsett Springs	C	0.0	0	33	0.0%
02/27/022/208	Stock Beck, Carlesmoor Beck & River Laver	C	55.4	1484	3500	42.4%
02/27/023/684	Stubbing Nook Borehole	F	21.0	21	135	15.6%
03/28/083/012	Thornham Boreholes	C	308.0	1189	6213	19.1%
02/27/016/160	Thornton Moor & Stubden Reservoirs	C	241.3	1195	6214	19.2%
02/27/012/038	Turvin Clough	C	0.0	7	4014	0.2%
02/27/019/054	Upper & Lower Barden Reservoirs	C	554.0	2488	14223	17.5%
02/27/020/088	Washburn Valley Reservoirs	C	2236.2	10533	43800	24.0%
02/27/015/041	Watersheddles Reservoir	F	137.8	138	6951	2.0%
02/27/016/021	Weecher Reservoir	C	17.2	88	909	9.7%
02/27/011/065	Wessenden Valley, Blackmoorfoot & Deerhill	F	630.2	630	12410	5.1%
02/27/023/034	West Stonesdale (Garland Hill) Springs	C	0.0	0	282	0.0%
02/27/015/042	Whinney Gill & Jenny Gill Reservoirs	C	0.0	0	377	0.0%
02/27/005/026	Winscar, U & L Windleden, Harden & Snailsden	F	609.6	610	10140	6.0%
02/27/012/036	Withens Clough Resr & Catchwater	C	178.5	828	3319	24.9%
02/27/010/011	Yateholme, Riding Wood, Ramsden & Brownhill	F	272.3	272	6820	4.0%

		April	Year to date MI	Annual Limit	% of Annual Limit
Licences with Aggregated Annual Quantities					
Baitings, Ryburn, Boothwood, Green Withens	C	1059	4327	20457	21%
Langsett, Midhope	F	1207	1207	17155	7%
Worth Valley	F	434	434	6951	6%
River Derwent (Elvington, Loftsome)	F	7087	7087	94841	7%
Cayton, Irton	C	675	2624	10700	25%
Selby Boreholes	C	1211	4783	25283	19%
Doncaster Wellfield	C	1951	7900	30295	26%
Doncaster Sub Group	C	1530	6234	26049	24%
Austerfield & Highfield Lane	C	659	2594	9956	26%
Hull Groundwater Sources	C	2468	9735	32850	30%

Third Party Agreements (Calendar Year)**Units in MI****Run date****01-May-25**

Source	Reporting Year	April	Year to date MI	Annual Limit	% of Annual Limit
CRT, Hudds Narrow Canal	C	116	185	1273	15%
Severn Trent Ladybower Reservoir	C	1601	6140	21550	28%

Reading date:**05-May-25**

	Reporting Year	Year to date MI	Annual Limit	% of Annual Limit
Winscar To Langsett Transfer Usage	F	204	2482	8%