

1 - Rainfall

The Yorkshire Region has received **103.5%** of LTA for January

2 - Reservoirs (surface water supply reservoirs not including Hull)

Over the past week our reservoir stocks have changed by **2.5%** to **96.7%**

3 - Rivers

All rivers are above critical level

4 - Demand

Regional Demand = **1402 MI/d** (including York)

Report Last Refresh Date (UTC)

2026-02-03 13:47:54

River	Monday, January 12, 2026	Monday, January 19, 2026	Monday, January 26, 2026	Monday, February 02, 2026
Derwent	2814	2140	4544	4802
Hull (using gauged (residual flows) only from 2011)	2000	1304	2000	2000
Ouse		6319	18131	13234
Ure	7009	2096	3264	2081
Wharfe	5534	1795	1950	1461

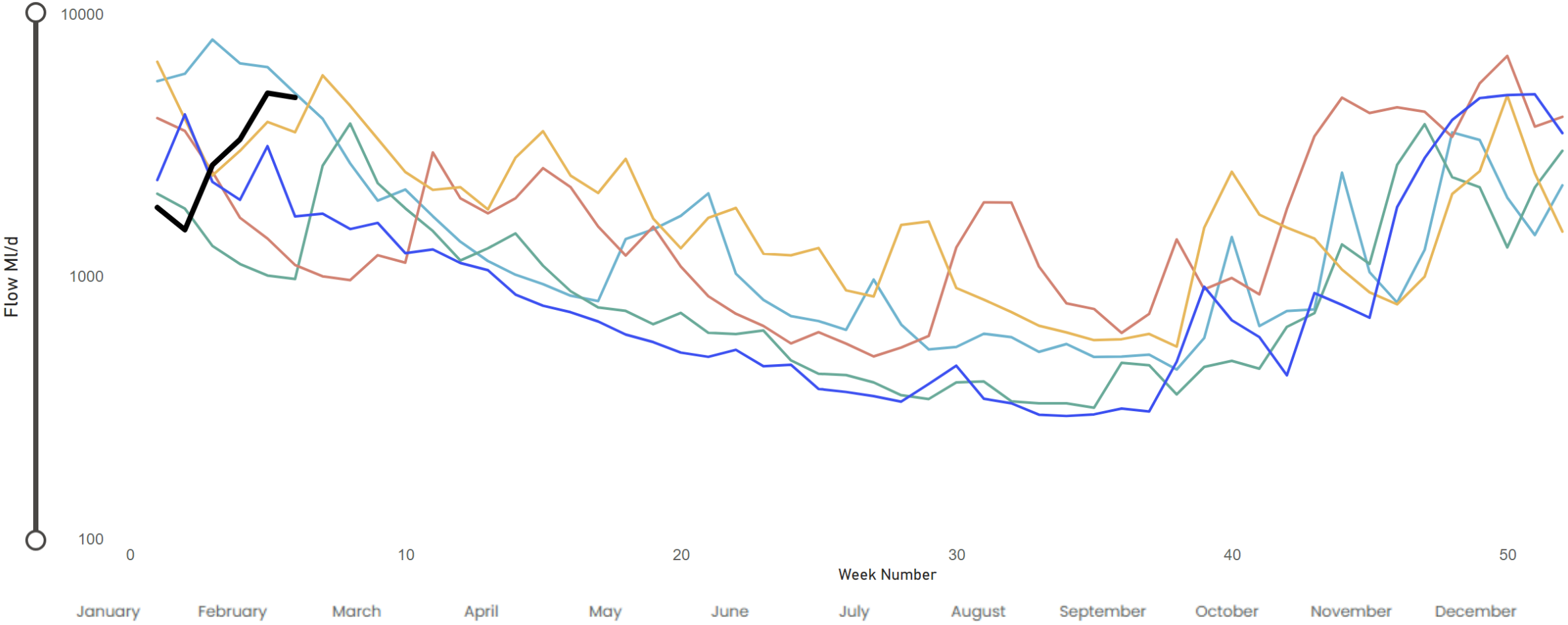
River	Critical flow bands (MI/d)
Derwent	305
Hull (using gauged (residual flows) only from 2011)	45 / 159 / 227
Ouse	400 / 650 / 1000
Ure	50 / 163 / 300
Wharfe	252 / 389 / 488 / 580

Current Flow (MI/d)
4802.1

Year Selection
Multiple selections ▾

River Derwent

● 2021 ● 2022 ● 2023 ● 2024 ● 2025 ● 2026

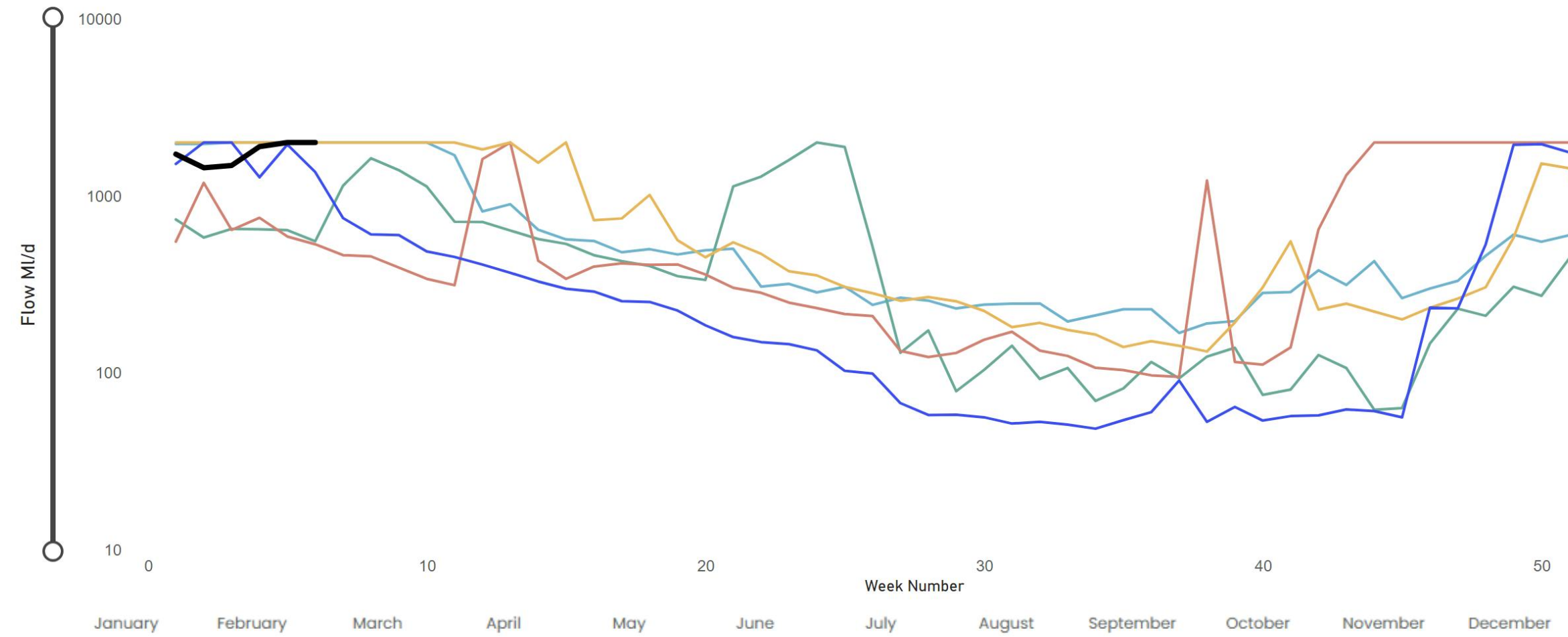


Current Flow (MI/d)
1999.9

Year Selection
Multiple selections ▾

River Hull

● 2021 ● 2022 ● 2023 ● 2024 ● 2025 ● 2026

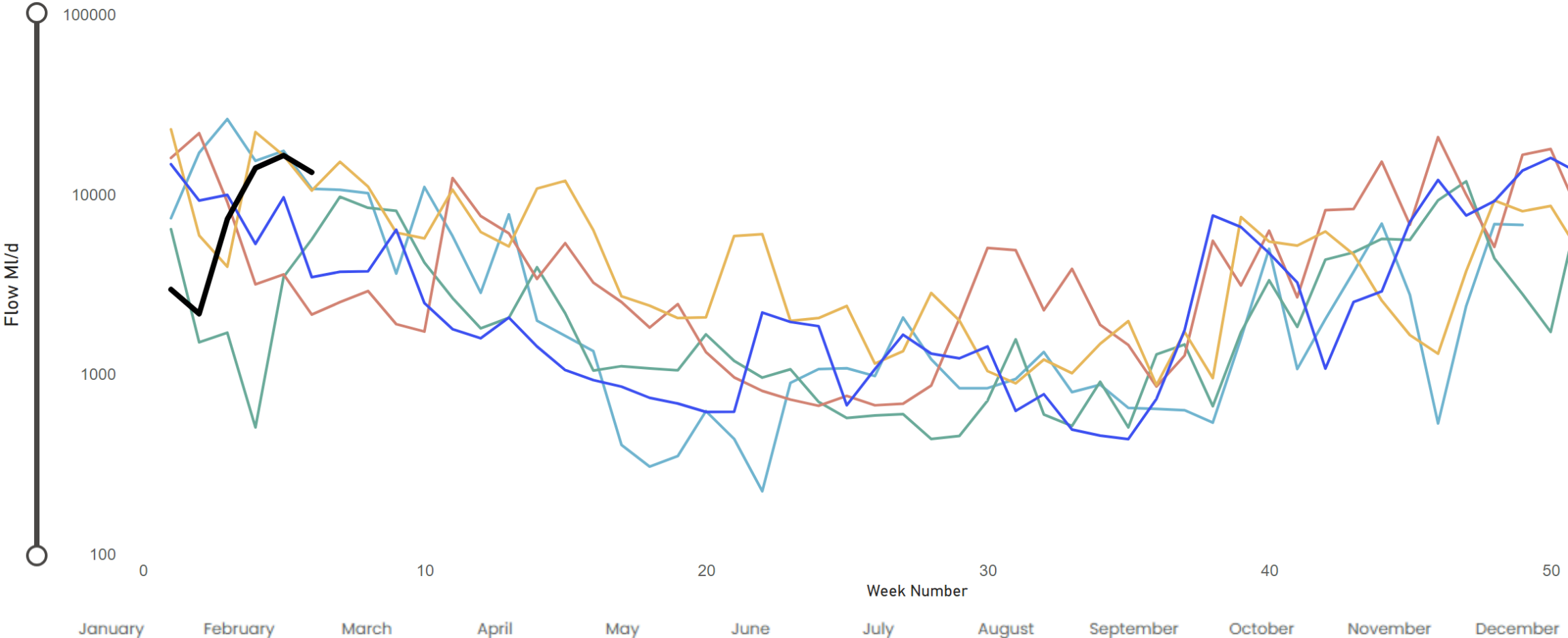


Current Flow (MI/d)
13.2K

Year Selection
Multiple selections ▾

River Ouse

● 2021 ● 2022 ● 2023 ● 2024 ● 2025 ● 2026

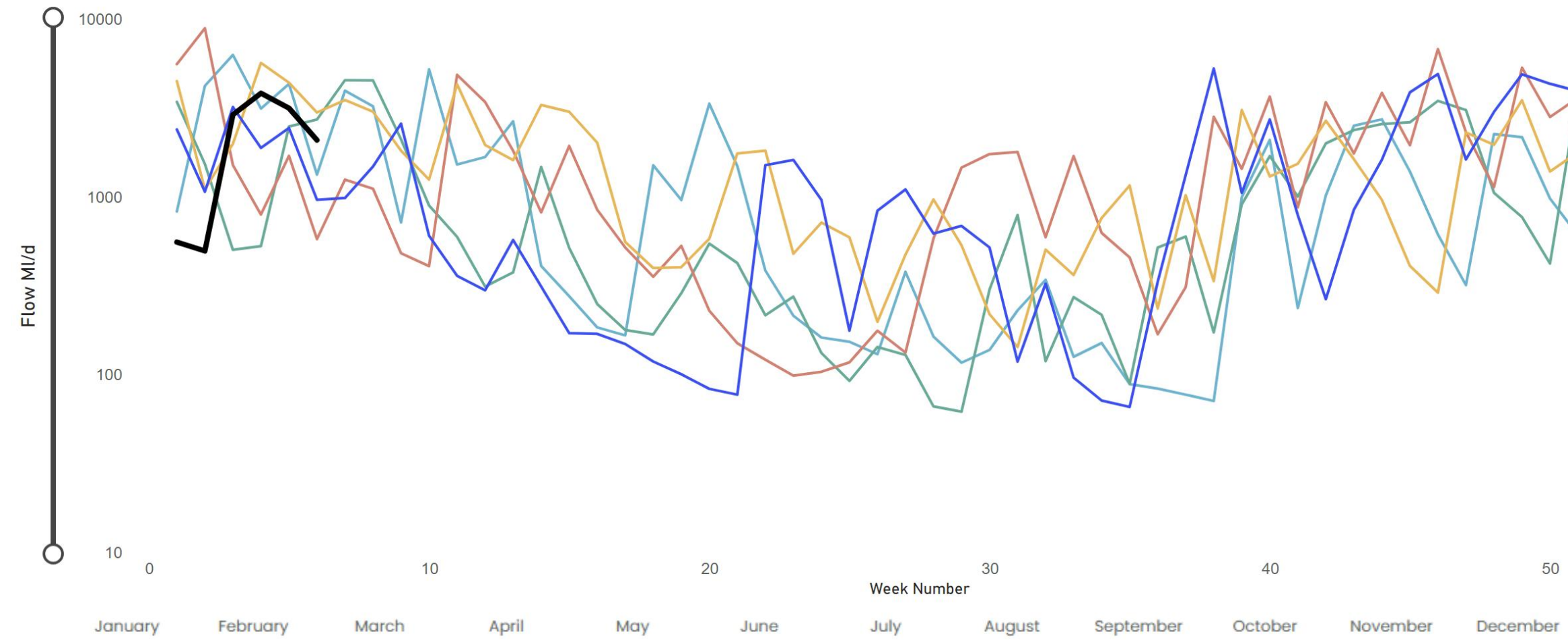


Current Flow (MI/d)
2081.4

Year Selection
Multiple selections ▾

River Ure

● 2021 ● 2022 ● 2023 ● 2024 ● 2025 ● 2026

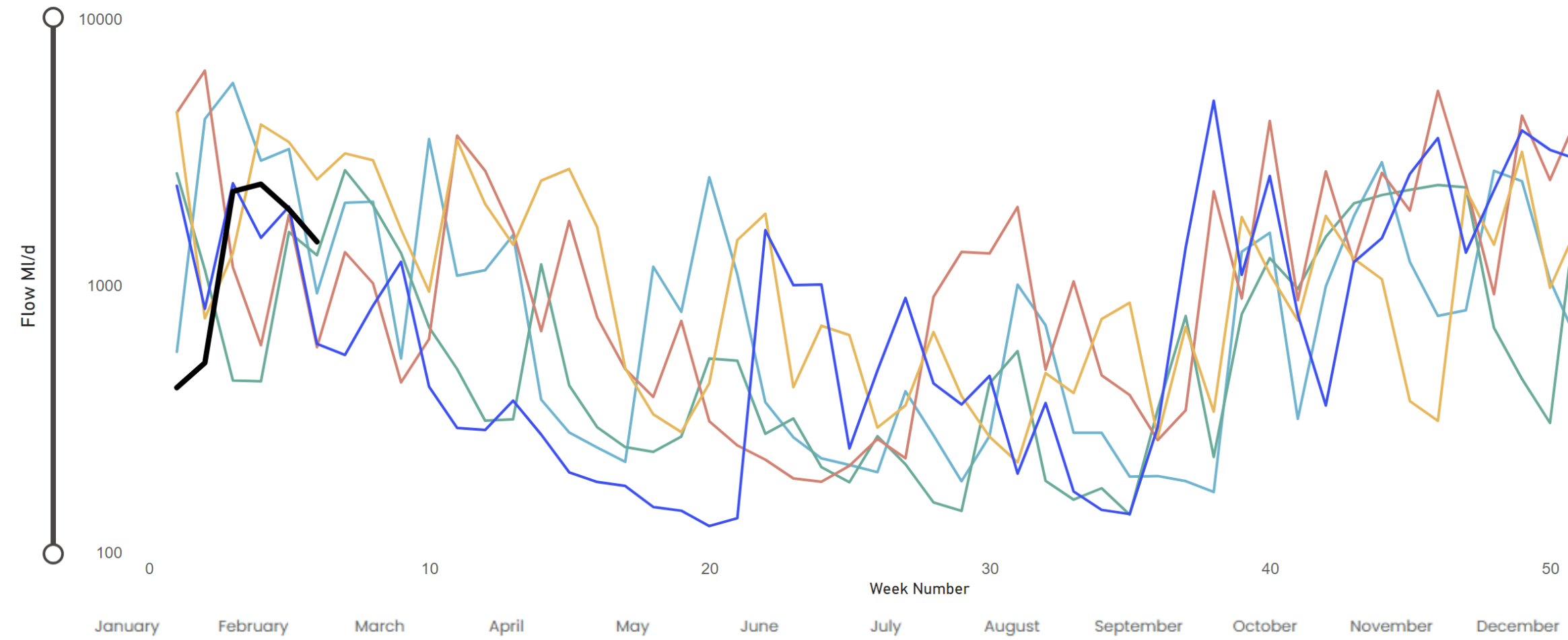


Current Flow (MI/d)
1460.6

Year Selection
Multiple selections ▾

River Wharfe

● 2021 ● 2022 ● 2023 ● 2024 ● 2025 ● 2026



Year Selection
Most Recent Year

Year	Month	Yorkshire Region mm	Yorkshire Region LTA mm	Yorkshire Region LTA (%)	England/Wales mm	England/Wales LTA (%)
2025	01	82	80	103	100	108
2025	02	37	70	53	57	78
2025	03	26	60	43	16	25
2025	04	11	58	19	34	56
2025	05	36	55	65	35	58
2025	06	41	73	56	60	88
2025	07	69	68	101	59	83
2025	08	22	79	28	36	45
2025	09	125	71	177	115	154
2025	10	79	84	94	89	90
2025	11	157	89	176	154	151
2025	12	97	90	108	119	115

SOURCE OF DATA: Hydrological summary of Gt. Britain, Institute of Hydrology

Yorkshire Region		
Average mm	LTA mm	LTA %
114.9	110.9	103.5%

Month Selection

Year Selection

West Average mm	West LTA mm	West LTA %
122.1	126.3	96.6%

East Average mm	East LTA mm	East LTA %
90.9	59.7	152.3%

Rainfall Station	Total mm	LTA mm	LTA %
Blackmoorfoot	90.7	120	76%
Fewston	115.6	90	128%
Gt Walden Edge	88.9	129	69%
Langsett	117.5	114	103%
Ramsden	128.4	158	81%
Redmires	127.4	111	115%
Roundhill	168.0	112	150%
Scar House	181.6	147	124%
Walshaw Dean	100.8	142	71%
Watersheddles	101.6	140	73%

Rainfall Station	Total mm	LTA mm	LTA %
Bridlington		61	
Cottingham	71.0	55	129%
Osmotherley	118.2	68	174%
Tophill	83.4	56	149%

SOURCE OF DATA : YWS RAIN GAUGES- weekly, so monthly data may include previous month or miss start of month

Thursday, January 29, 2026 Previous Week			Thursday, January 22, 2026 Two Weeks Prior			Thursday, January 29, 2026 Previous Week			Thursday, January 22, 2026 Two Weeks Prior		
---	--	--	---	--	--	---	--	--	---	--	--

Water Treatment Works	Operational Maxima & Design Yields (MI/d)	WRAP Targets Week Beginning - Previous Week	Daily Average Previous 5 Days Starting - Previous Week	WRAP Targets Week Starting - Two Weeks Prior	Daily Average Week Starting - Two Weeks Prior
Central					
ECCUP NO 1 WTW	100	53	55	53	49
HEADINGLEY	95	63	77	63	81
ECCUP NO 2 WTW	60	44	37	44	47
HARLOW HILL	42	27	28	27	28
THORNTON STEWARD	23	20	21	20	22
North West					
CHELLOW	175	148	163	148	177
GRAINCLIFFE	60	38	37	38	38
EMBSAY	25	17	19	17	21
SLADEN VALLEY	12	8	11	8	11
OLDFIELD	10	6	6	6	7
East					
KELDGATE	90	60	62	60	63
TOPHILL LOW	68	40	40	40	42
IRTON	24	13	13	13	14
EAST NESS	17	8	10	8	8
RUSWARP	12	7	8	7	8

Water Treatment Works	Operational Maxima & Design Yields (MI/d)	WRAP Targets Week Beginning - Previous Week	Daily Average Previous 5 Days Starting - Previous Week	WRAP Targets Week Starting - Two Weeks Prior	Daily Average Week Starting - Two Weeks Prior
Grid					
ELVINGTON	260	159	181	159	174
LOFTSOME BRIDGE	110	75	74	75	36
South					
RIVELIN	68	64	73	64	74
LANGSETT	56	36	47	36	49
EWDEN	40	35	34	35	30
LOXLEY	40	26	34	26	34
INGBIRCHWORTH	20	20	19	20	11
South West					
ALBERT	55	51	47	51	47
LONGWOOD	32	27	20	27	20
FIXBY	30	21	18	21	20
KIRKHAMGATE	30	17	18	17	19
HOLMBRIDGE	29	19	20	19	19
BLACKMOORFOOT	23	20	20	20	20

Daily Average Demand MI/d

Week Ending Wednesday	Leeds	Wakefield And Morley	Selby	Harrogate	Hull	Malton	Sheffield And Barnsley	Doncaster	Bradford	Calder	Skipton	York Area	Region
02 February 2026	177	81	44	76	160	53	294	82	162	151	39	48	1367
25 January 2026	181	82	44	77	162	55	298	85	166	156	46	48	1402
18 January 2026	187	85	45	80	171	54	297	87	161	160	46	50	1424
11 January 2026	188	86	46	83	175	59	294	89	163	160	42	56	1440
04 January 2026	157	77	41	73	155	54	266	103	156	146	43	45	1317

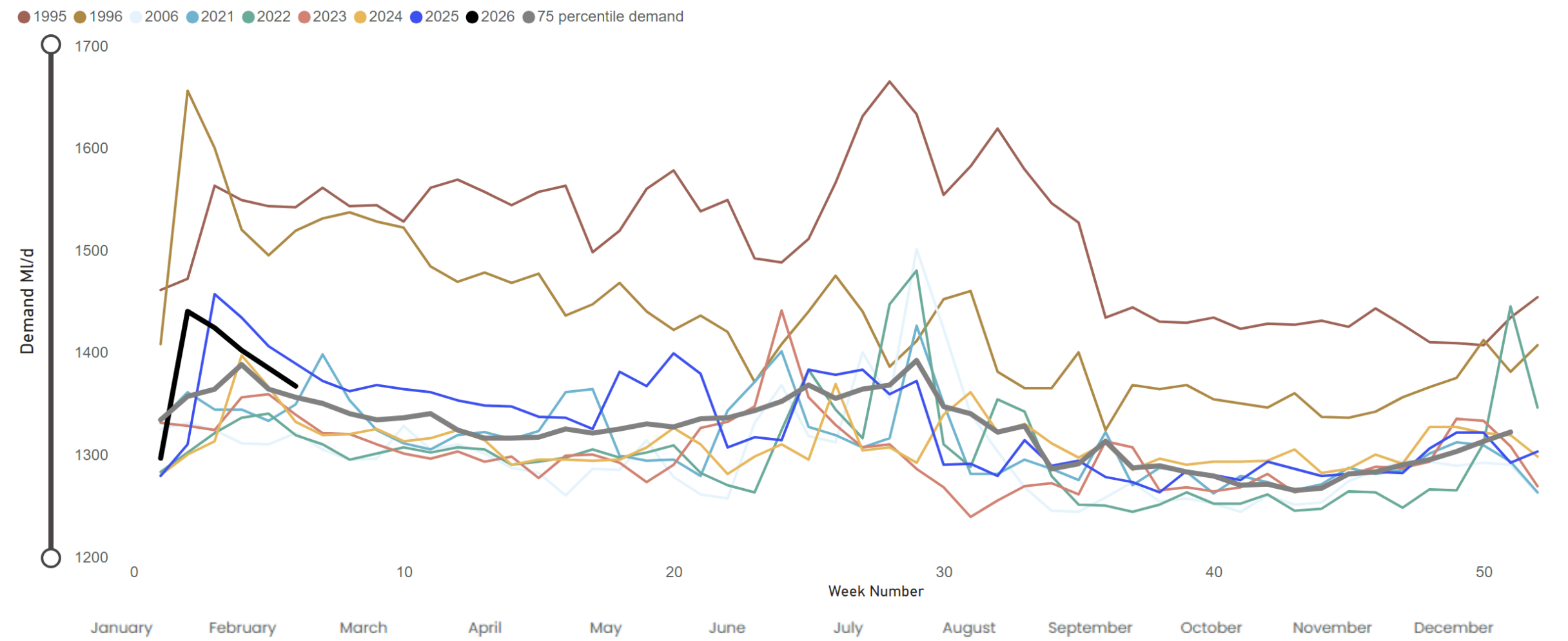
Monthly Demands from WIS Report (MI/d)

Month And Year	Leeds	Wakefield And Morley	Selby	Harrogate	Hull	Malton	Sheffield And Barnsley	Doncaster	Bradford	Calder	Skipton	York Area	Region
December 2025	165	55	39	69	153	52	279	71	151	152	36	43	1272
November 2025	169	54	40	70	150	51	285	72	124	158	36	44	1258

Current Demand (MI/d)
1366

Year Selection
Multiple selections ▾

Regional Demand

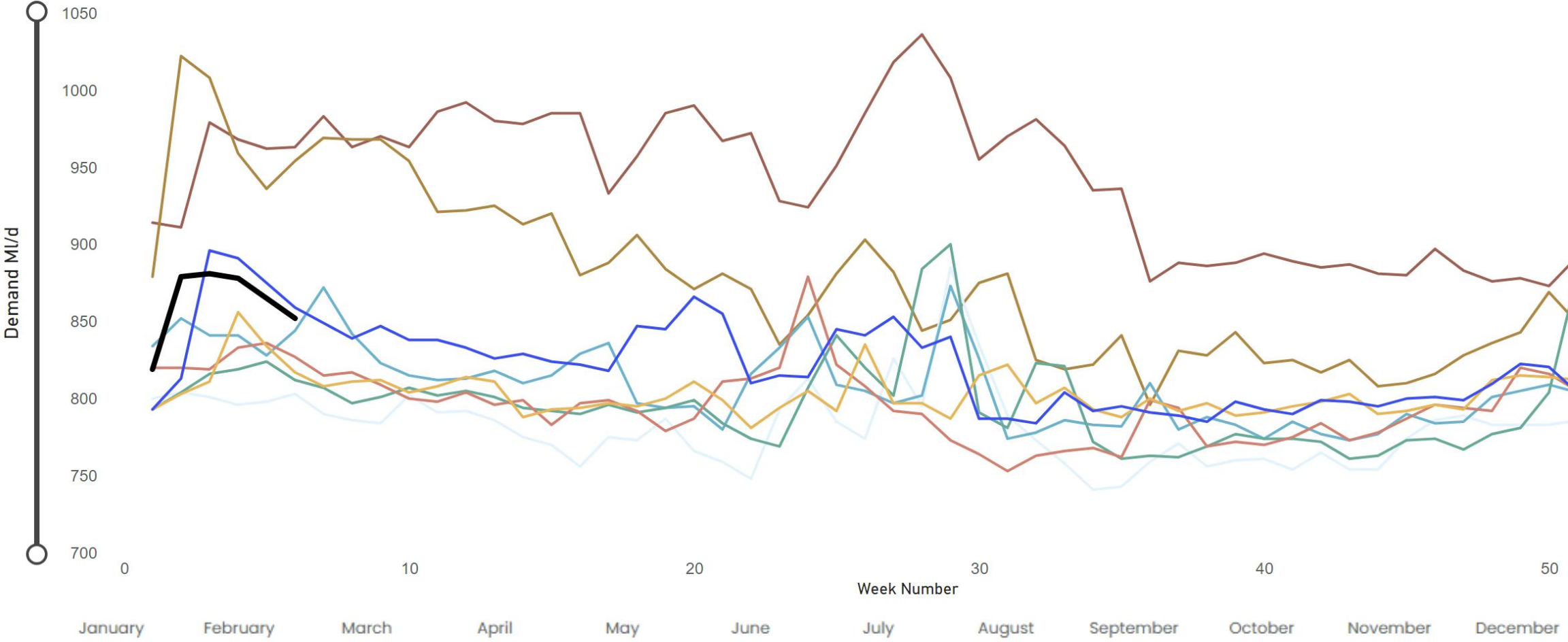


Current Demand (MI/d)
852

Year Selection
Multiple selections ▾

West Area Demand

● 1995 ● 1996 ● 2006 ● 2021 ● 2022 ● 2023 ● 2024 ● 2025 ● 2026

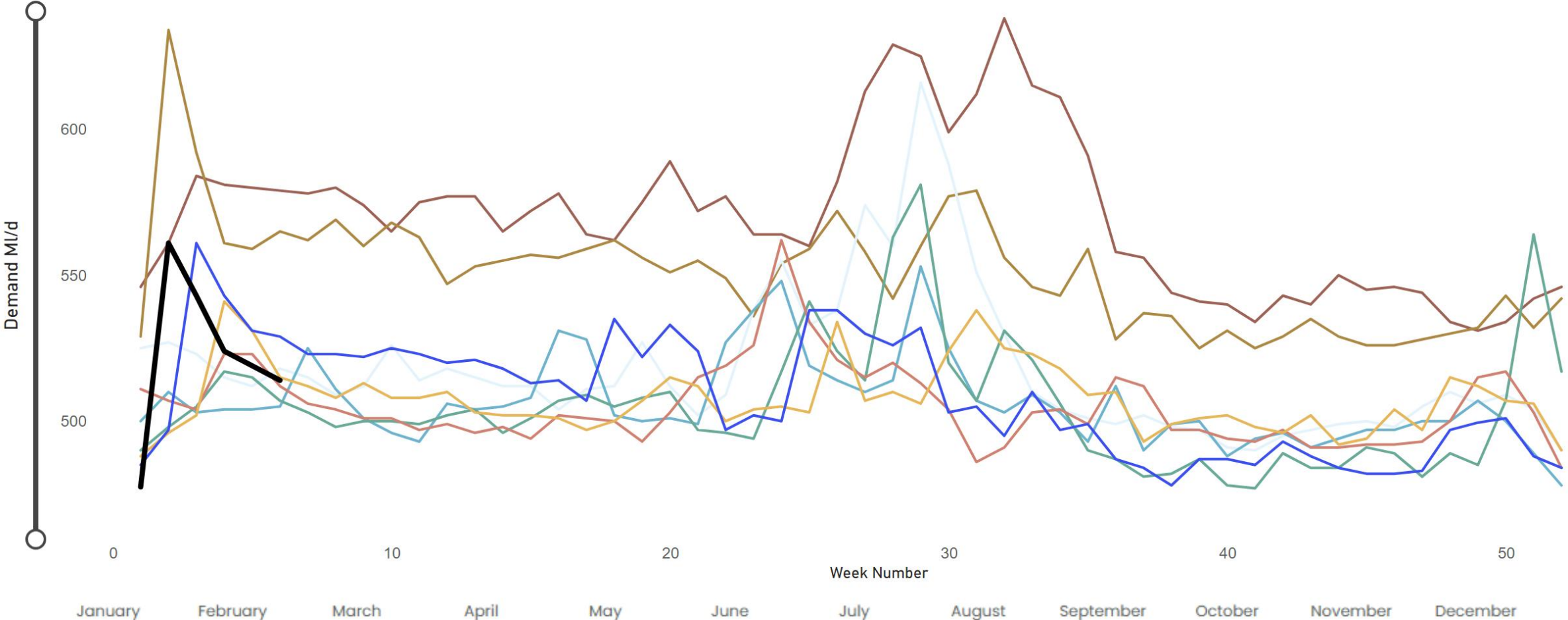


Current Demand (MI/d)
514

Year Selection
Multiple selections ▾

East Area Demand

1995 1996 2006 2021 2022 2023 2024 2025 2026

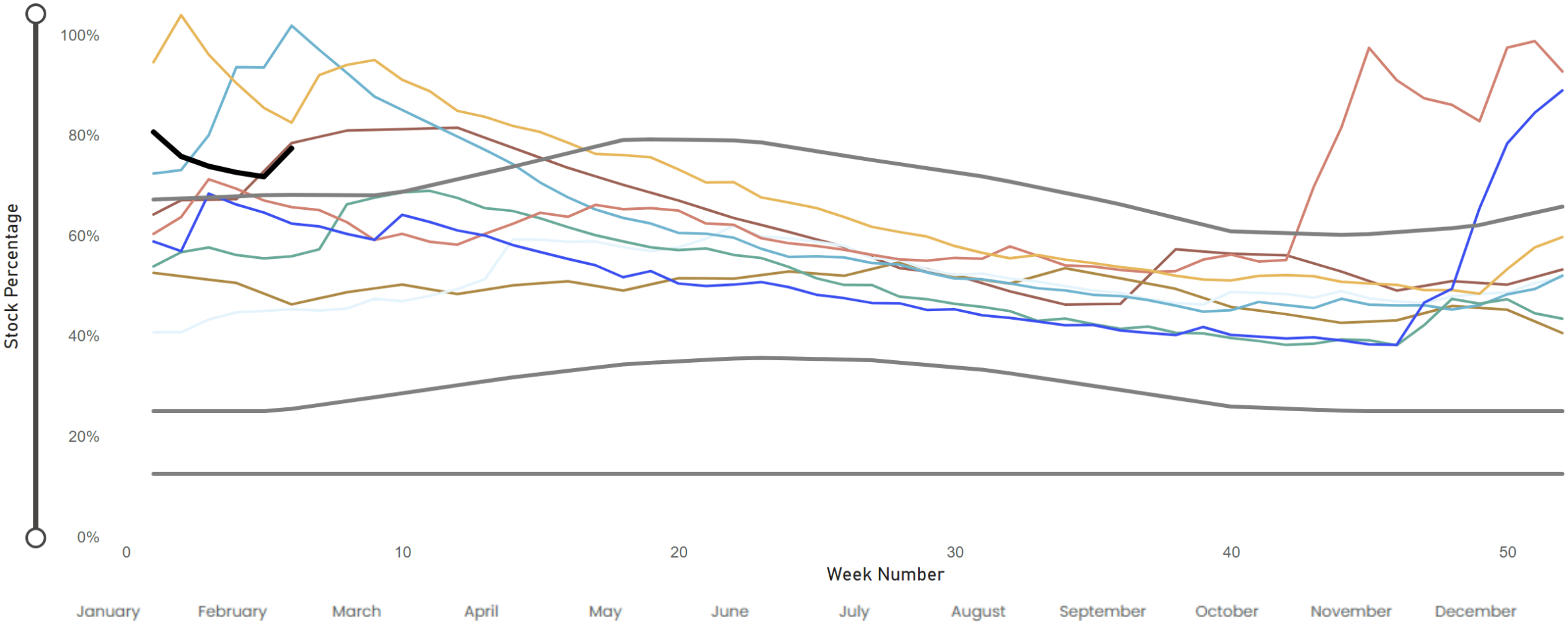


Current Stock
77.4%

Year Selection
Multiple selections ▾

Hull Aquifer

● 1995 ● 1996 ● 2006 ● 2021 ● 2022 ● 2023 ● 2024 ● 2025 ● 2026 ● Drought Control Line ● Emergency Storage ● Normal Control Line



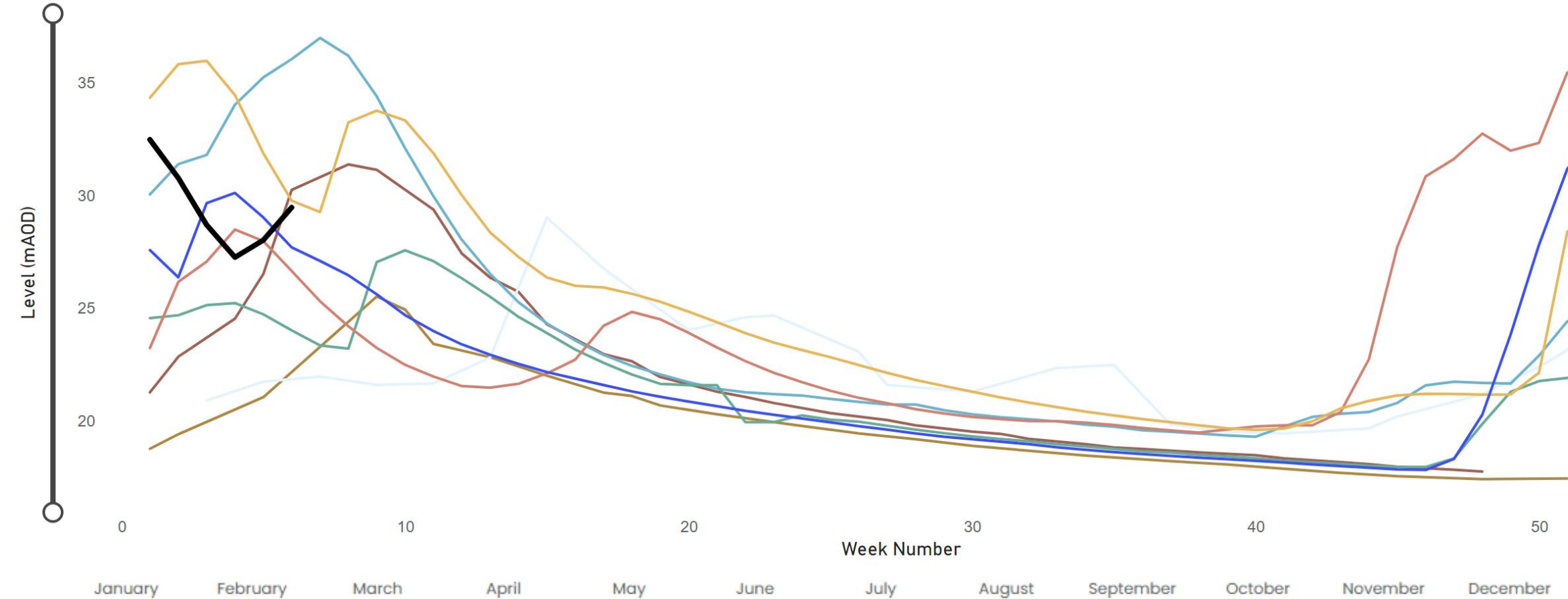
Current Level (mAOD)
29.5

Year Selection
Multiple selections ▾

Chalk (Wolds Aquifer)

Wetwang Observation Borehole - SE 958 594

● 1995 ● 1996 ● 2006 ● 2021 ● 2022 ● 2023 ● 2024 ● 2025 ● 2026



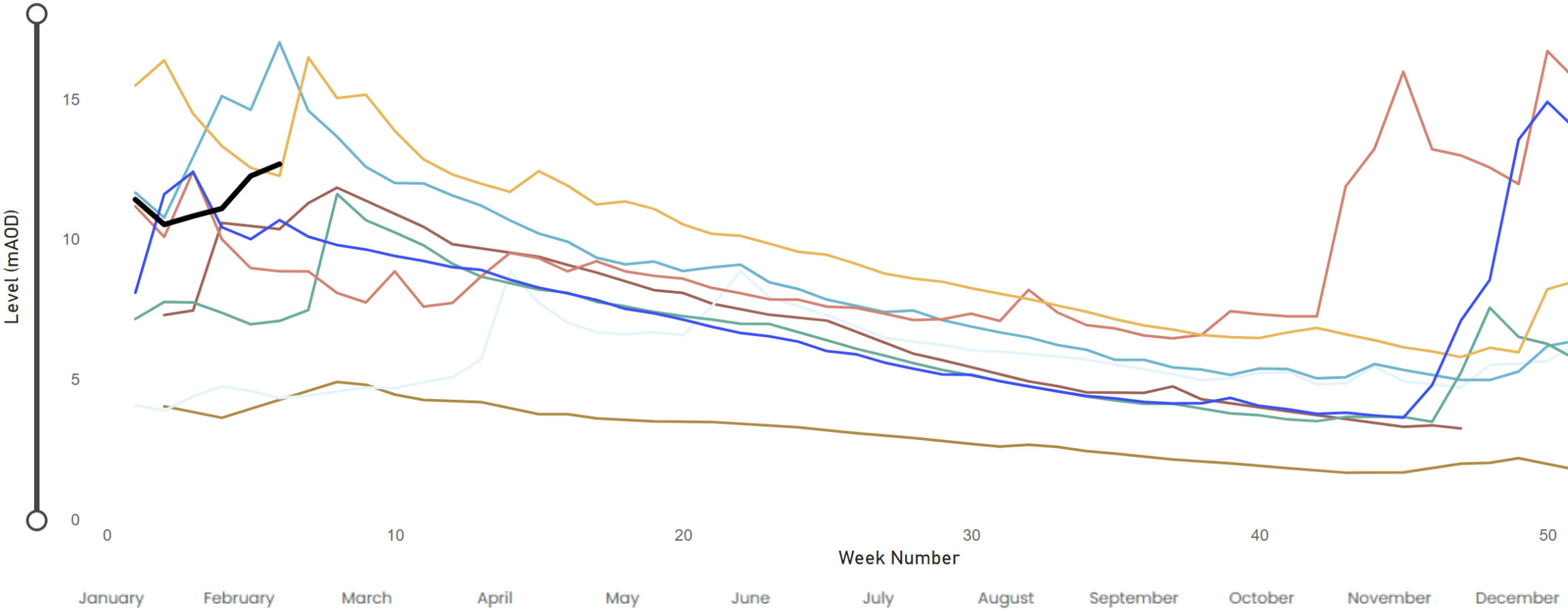
Current Level (mAOD)
12.7

Year Selection
Multiple selections ▾

Chalk (Hull Aquifer)

Westwood Observation Borehole - TA 020 399

Legend: 1995 (brown), 1996 (gold), 2006 (light blue), 2021 (medium blue), 2022 (green), 2023 (red), 2024 (orange), 2025 (dark blue), 2026 (black)



Reservoir Groups	% Stocks	% Change	Previous % Change
Calder	96.4%	1.3%	1.1%
+ Boothwood/Ryburn (inc Withens Clough)	96.7%	0.0%	0.8%
+ Brownhill/Digley	100%	0.3%	1.2%
+ Calderdale (excl Withens Clough)	92.3%	3.1%	2.9%
+ Huddersfield	98%	1.4%	0.0%
East	72.9%	-0.6%	-1.2%
+ Hull Aquifer	71.7%	-0.9%	-1.2%
+ Tophill Low	86.5%	2.4%	-0.4%
North	96.5%	0.8%	3.0%
+ Haverah Park	100%	0.0%	1.1%
+ Leighton & Roundhill	100%	0.0%	1.3%
+ Lumley Moor	100%	0.0%	0.5%
+ Thornton Steward	96.9%	-0.3%	0.0%
+ Washburn & Eccup Resvrs	95.2%	1.2%	3.8%
North West	97.7%	4.1%	1.7%
+ Embsay	100%	1.5%	2.0%
+ Grimwith	96%	7.8%	2.9%
+ Nidd/Barden/Chelker	98.9%	0.6%	0.5%
+ Rombalds	99.8%	6.5%	-0.7%
+ Thornton	100%	0.0%	0.0%
+ Worth Valley	100%	0.9%	1.1%
South	95.6%	3.6%	0.7%
+ Don Valley & Winscar	87.5%	4.3%	1.3%
+ Ewden Valley	100%	0.0%	0.0%
+ Little Don	100%	0.0%	0.4%
+ Loxley Valley	100%	0.0%	0.0%
+ Redmires	97.2%	26.2%	2.0%
+ Rivelin Valley	100%	0.0%	0.0%



Report Date
26 January 2026

Report Date
2026-01-26

Regional Total (DCP) inc East Area

93.9% % Stocks	2.2% % Change	1.3% Previous % Change
--------------------------	-------------------------	----------------------------------

Yorkshire Total (Supply) not inc East Area

96.7% % Stocks	2.5% % Change	1.6% Previous % Change
--------------------------	-------------------------	----------------------------------

Report Date
26 January 2026

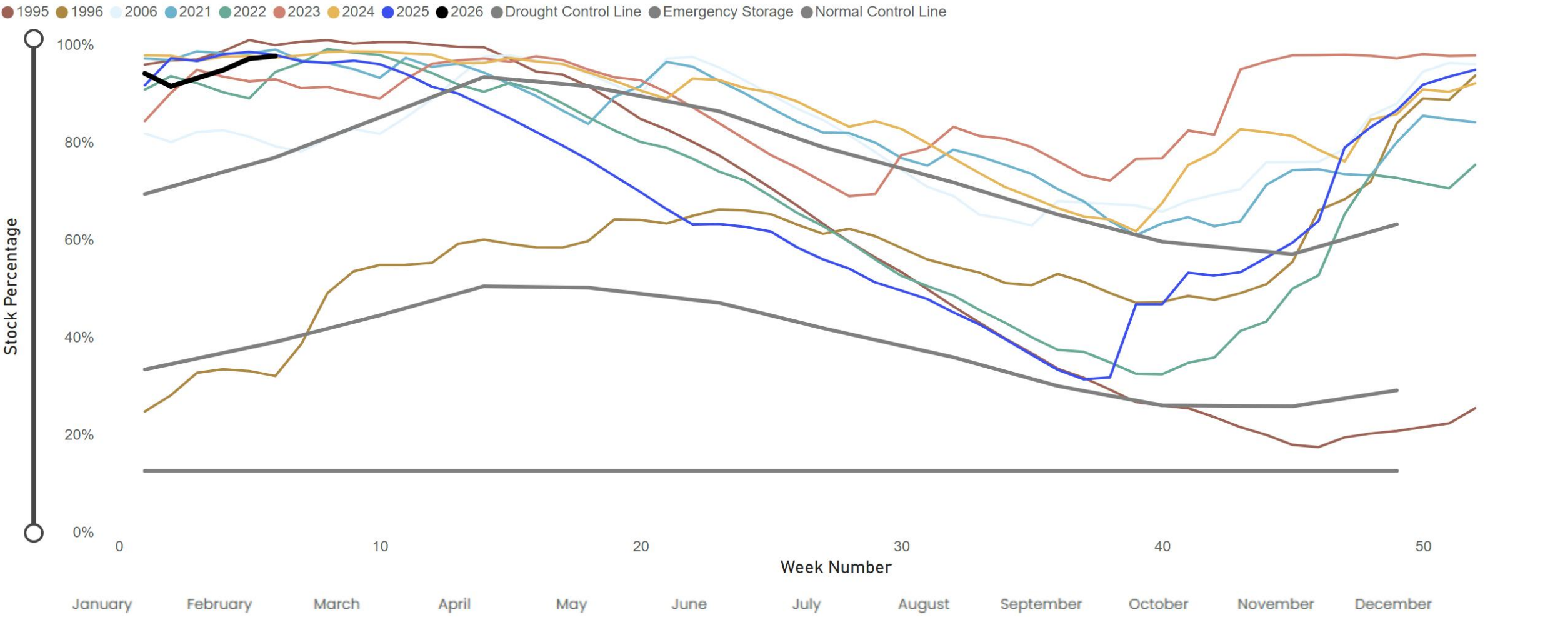
Report Date
2026-01-26

Reservoir Group	Reservoir	Reason For Drawdown	Required Drawdown & Duration	% Drawdown	% Stock	% Change	Previous % Change
North West	Barden Upper IRE		Mar 26 - Jun 26	30.0%	92.3%	4.3%	-9.2%
Calder	Brownhill IRE	Leakage Investigation	Mar 26 -Aug 26	51.0%	100.0%	0.0%	0.0%
North West	Chelker IRE	Pointing	Nov 24 - Dec 25	89.0%	94.0%	0.0%	0.9%
North	Cod Beck IRE	Inspection of Overflow and Upstream Face	Aug 24 - Dec 25	83.0%			
North West	March Ghyll IRE	Embankment Stability Works	Jan 23 - Dec 25	86.0%			
Calder	Ramsden IRE	Emergency grouting	Mar 26 -Aug 26	96.0%	100.0%	0.0%	0.0%
South	Redmires Middle IRE	Damage to Overflow Channel	Nov 23 - Dec 25	89.0%	89.9%	14.1%	2.1%
South	Redmires Upper IRE	Damage to Overflow Channel	Nov 23 - Dec25	54.0%	100.0%	44.9%	2.8%
Calder	Walshaw Dean Lower IRE	OSA Repairs	Apr 25 - Dec 25	60.0%	65.7%	10.5%	2.2%
Calder	Walshaw Dean Middle IRE	TBC	Oct 25	91.0%	100.0%	3.1%	5.3%
Calder	Widdop IRE	Increase Drawdown Capacity	June 25 - Dec 25	10.0%	77.2%	7.4%	7.9%

Current Stock
97.6%

Year Selection
Multiple selections ▾

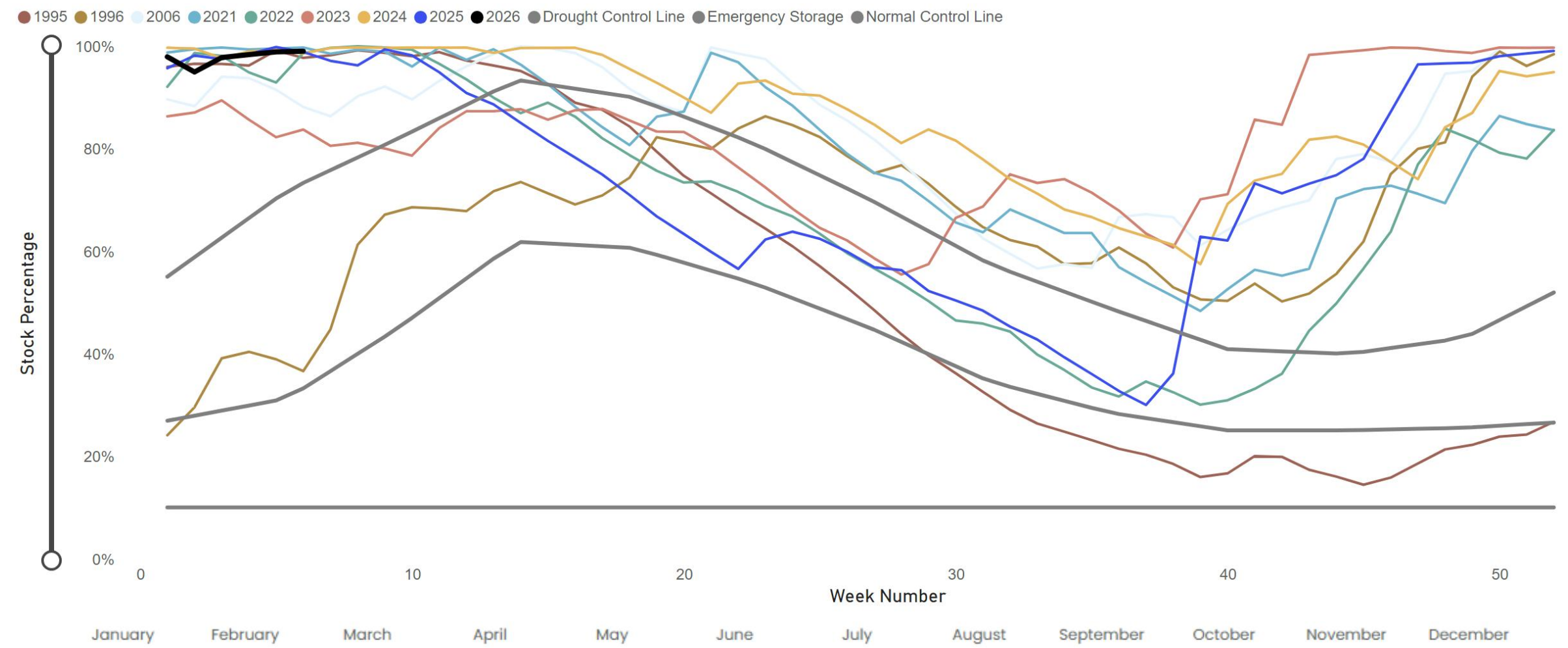
Yorkshire Water - Total Reservoir Stocks (not including Hull)



Current Stock
99.0%

Year Selection
Multiple selections ▾

Nidd/Barden Reservoir Group

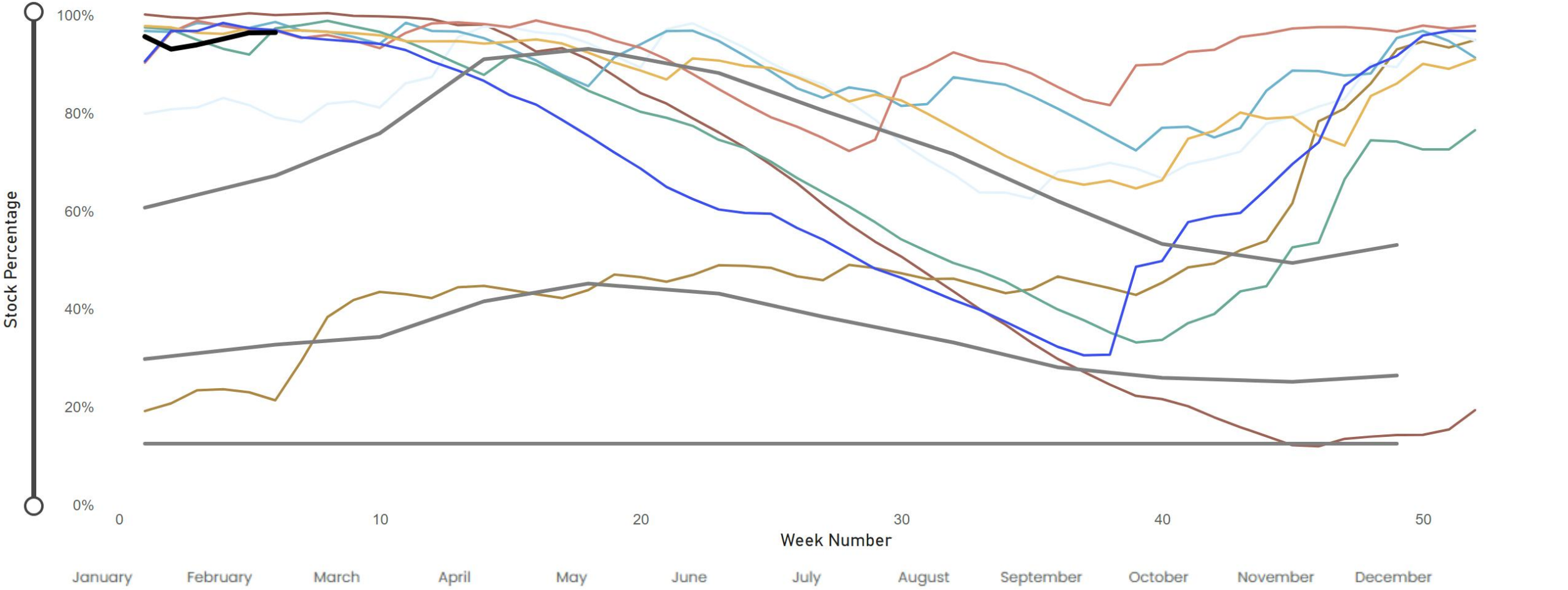


Current Stock
96.5%

Year Selection
Multiple selections ▾

Calder Reservoirs

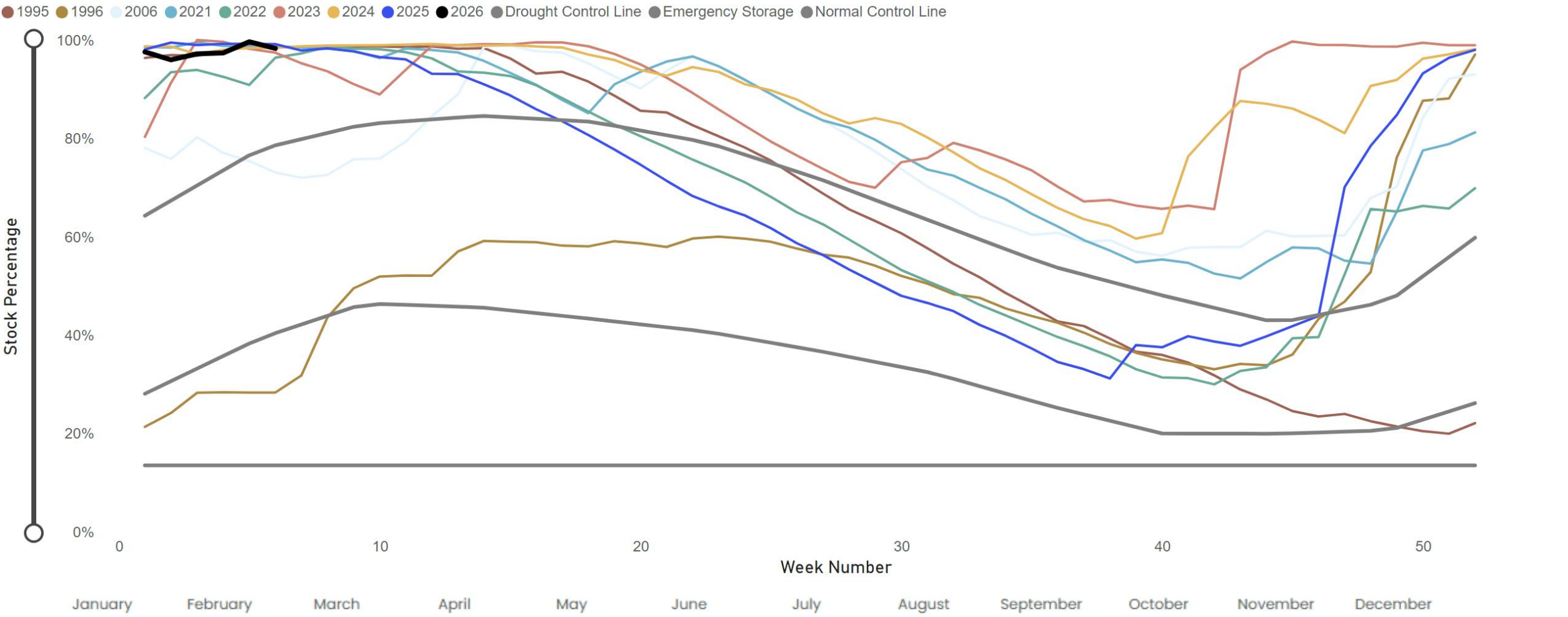
● 1995 ● 1996 ● 2006 ● 2021 ● 2022 ● 2023 ● 2024 ● 2025 ● 2026 ● Drought Control Line ● Emergency Storage ● Normal Control Line



Current Stock
98.3%

Year Selection
Multiple selections ▾

Sheffield & Barnsley Reservoirs



Regional Reservoir Group

(sum of South West, North West, East, South, North & Winscar Reservoirs)

168381
MI

93.9%
% Stocks

2.2%
% Change

Report Date

26 January 2026

Report Date

2026-01-26



EA Groups	MI	% Stocks	% Change
[-] South West	42474	96.4%	1.3%
[-] South West Area Supply Reservoirs	42474	96.4%	1.3%
[+] Withens Clough	1467	100%	0.0%
[+] Huddersfield Group	13846	98%	1.4%
[+] Calderdale Group	10279	92.3%	3.1%
[+] Brownhill/Digley excl Holmestyes	5616	100%	0.3%
[+] Boothwood/Ryburn	11265	96.3%	0.0%
[-] North West	46135	97.7%	4.1%
[-] Skipton Area Supply Reservoirs	4035	100%	1.0%
[+] Worth Valley Group	3312	100%	0.9%
[+] Embsay	723	100%	1.5%
[-] Bradford Area Supply Reservoirs	42101	97.5%	4.4%
[+] Rombalds/Thornton Group	2229	99.9%	3.3%
[+] Nidd/Barden/Chelker	18969	98.9%	0.6%
[+] Grimwith	20902	96%	7.8%

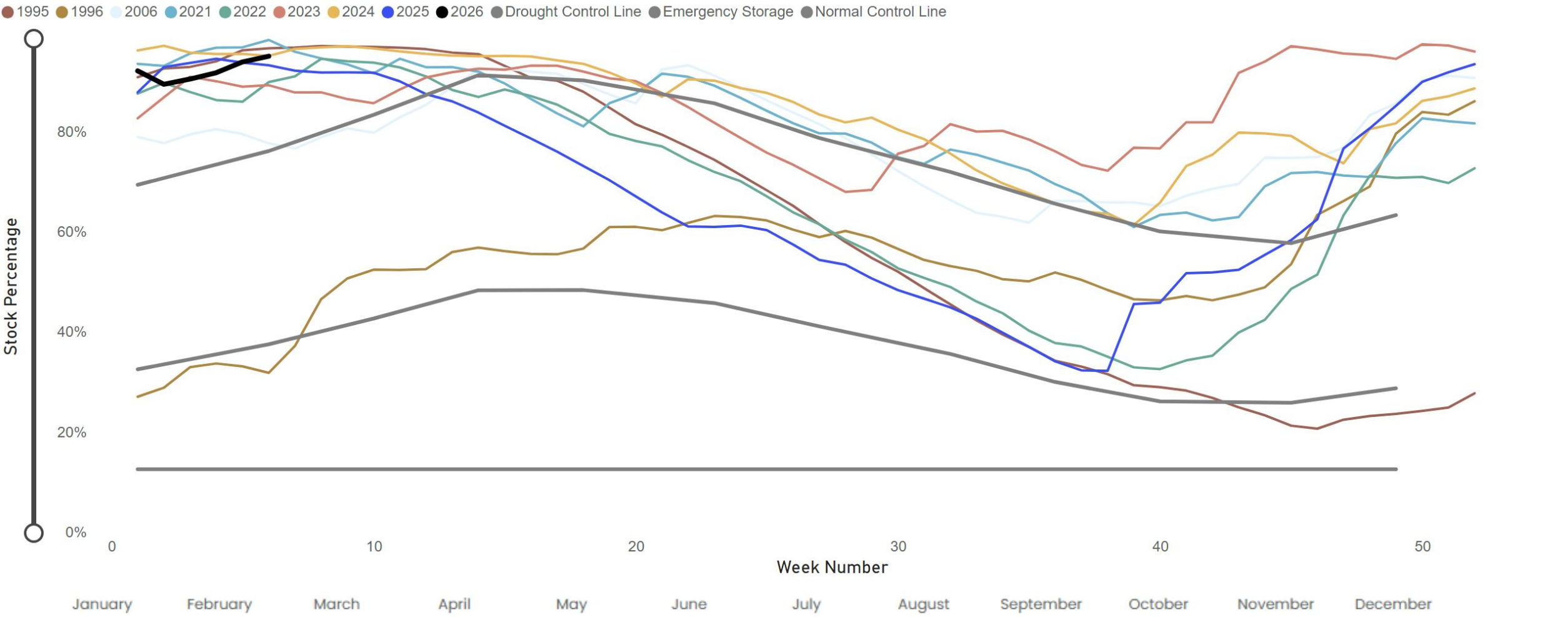
EA Groups	MI	% Stocks	% Change
[-] South	24723	99.5%	3.2%
[-] South Area Supply	24723	99.5%	3.2%
[+] Rivelin	815	100%	0.0%
[+] Redmires	2701	97.2%	26.2%
[+] Loxley Valley	6874	100%	0.0%
[+] Little Don	7369	100%	0.0%
[+] Ewden Valley	4937	100%	0.0%
[+] Don Valley	2026	97.4%	3.8%
[-] North	31950	96.5%	0.8%
[-] North Area Supply Reservoirs	31950	96.5%	0.8%
[+] Washburn	16362	100%	0.0%
[+] Thornton Steward	918	96.9%	-0.3%
[+] Lumley Moor	381	100%	0.0%
[+] Leighton/Roundhill	7401	100%	0.0%
[+] Haverah Park	1002	100%	0.0%
[+] Eccup	5885	83.9%	4.0%
[-] East	15078	72.9%	-0.6%
[-] East Area Supply Reservoirs	15078	72.9%	-0.6%
[+] Tophill Low	1456	86.5%	2.4%
[+] Hull Aquifer	13622	71.7%	-0.9%

EA Groups	MI	% Stocks	% Change
[-] South	18861	93.2%	2.1%
[-] Other (Excluded from Area Total)	18861	93.2%	2.1%
[+] Winscar Group	8021	85.4%	4.5%
[+] Underbank	2867	100%	0.0%
[+] Scout Dike	694	100%	0.0%
[+] Morehall	2173	100%	0.0%
[+] Damflask	5106	100%	0.0%
[-] North West	8332	100%	2.8%
[-] Other (Excluded from Area Total)	8332	100%	2.8%
[+] Gouthwaite	5811	100%	3.6%
[+] Compensation inc Silsden	2521	100%	1.0%
[-] North	2920	100%	0.0%
[-] Other (Excluded from Area Total)	2920	100%	0.0%
[+] Lindley Wood Compensation	2920	100%	0.0%

Current Stock
95.1%

Year Selection
Multiple selections ▾

Regional Reservoir Group (including Hull)

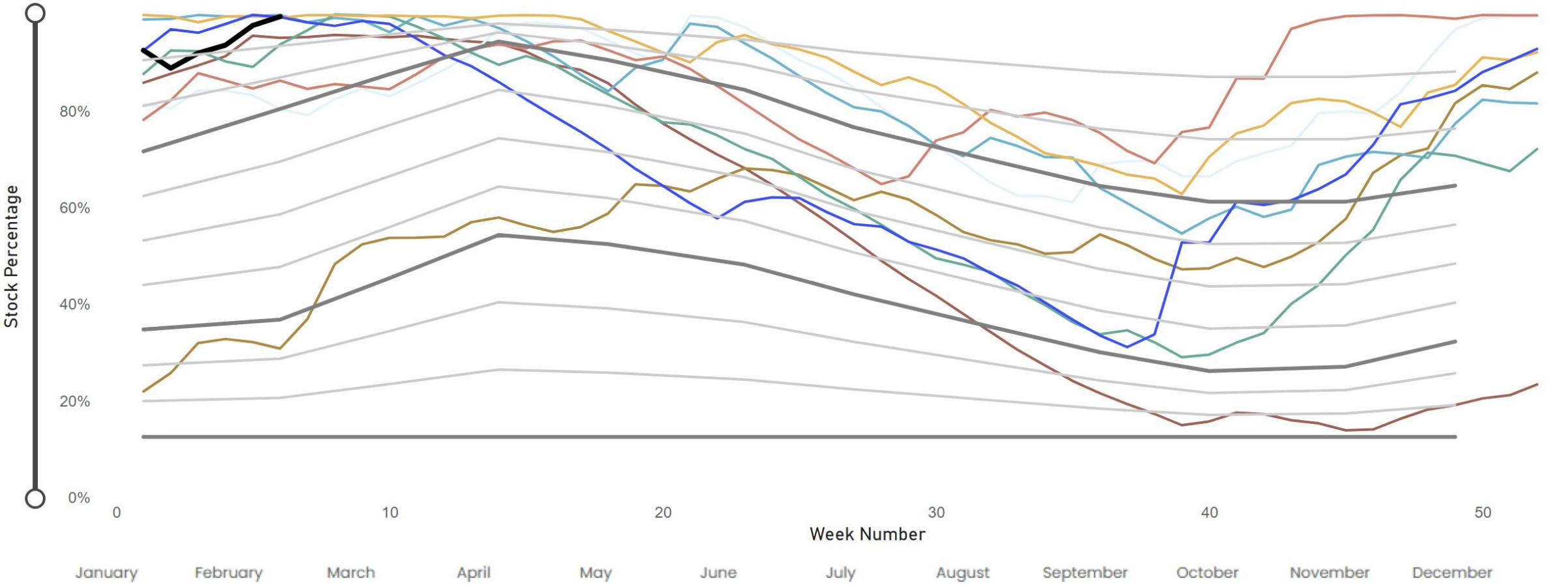


Current Stock
99.6%

Year Selection
Multiple selections ▾

North West Reservoir Group (Bradford, Keighley, Skipton)

- 1995 1996 2006 2021 2022 2023 2024 2025 2026 Control Line 1 Control Line 2 Control Li... Control Li... Control Li... Control Li... Control Li... Drought C... Emergenc... Normal ...

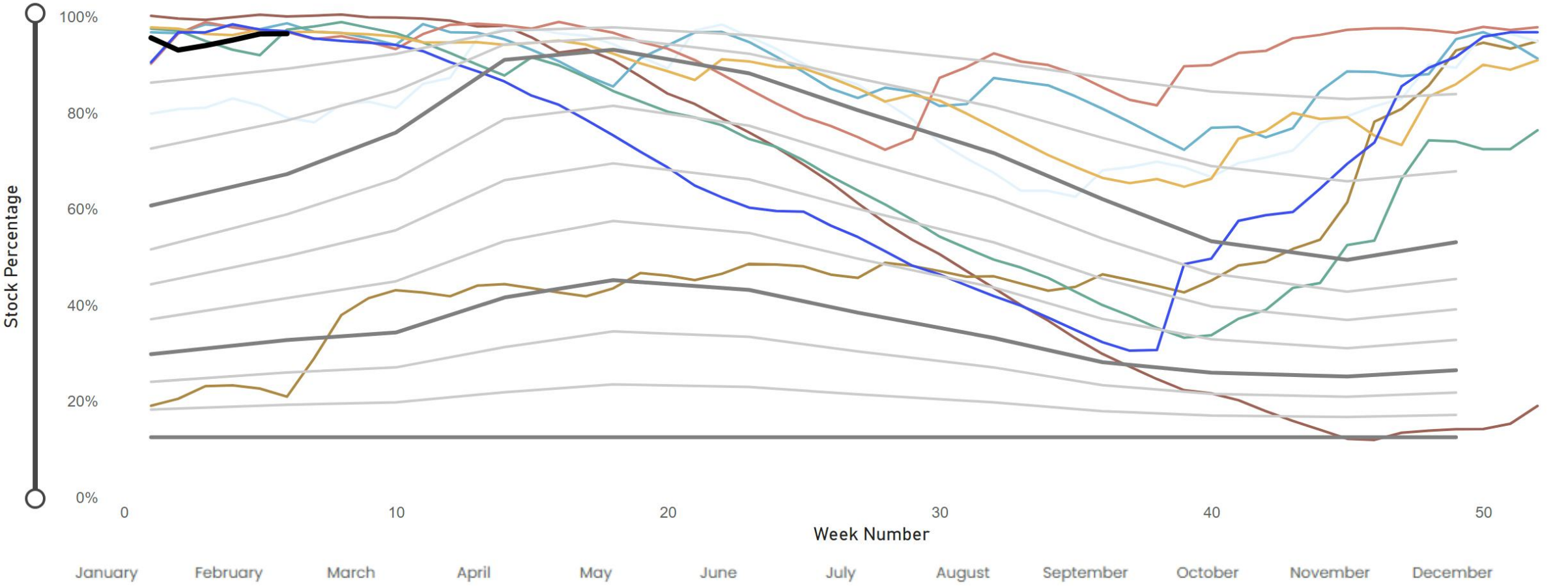


Current Stock
96.5%

Year Selection
Multiple selections ▾

South West Reservoir Group (Calderdale, Kirklees)

- 1995 1996 2006 2021 2022 2023 2024 2025 2026
- Control Line 1 Control Line 2 Control Li... Control Li... Control Li... Control Li... Control Li...
- Drought C... Emergenc... Normal ...

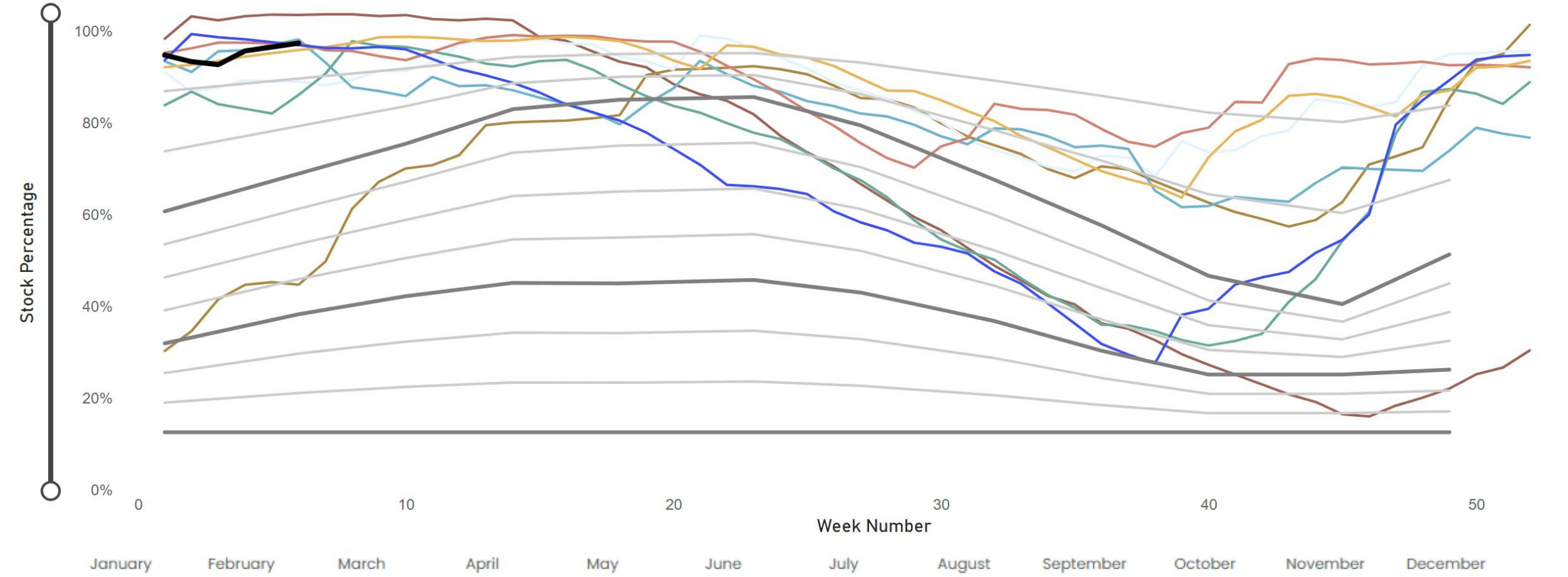


Current Stock
97.4%

Year Selection
Multiple selections ▾

North Reservoir Group (Leeds, Harrogate)

- 1995 1996 2006 2021 2022 2023 2024 2025 2026
- Control Line 1 Control Line 2 Control Li... Control Li... Control Li... Control Li... Control Li...
- Drought C... Emergenc... Normal ...



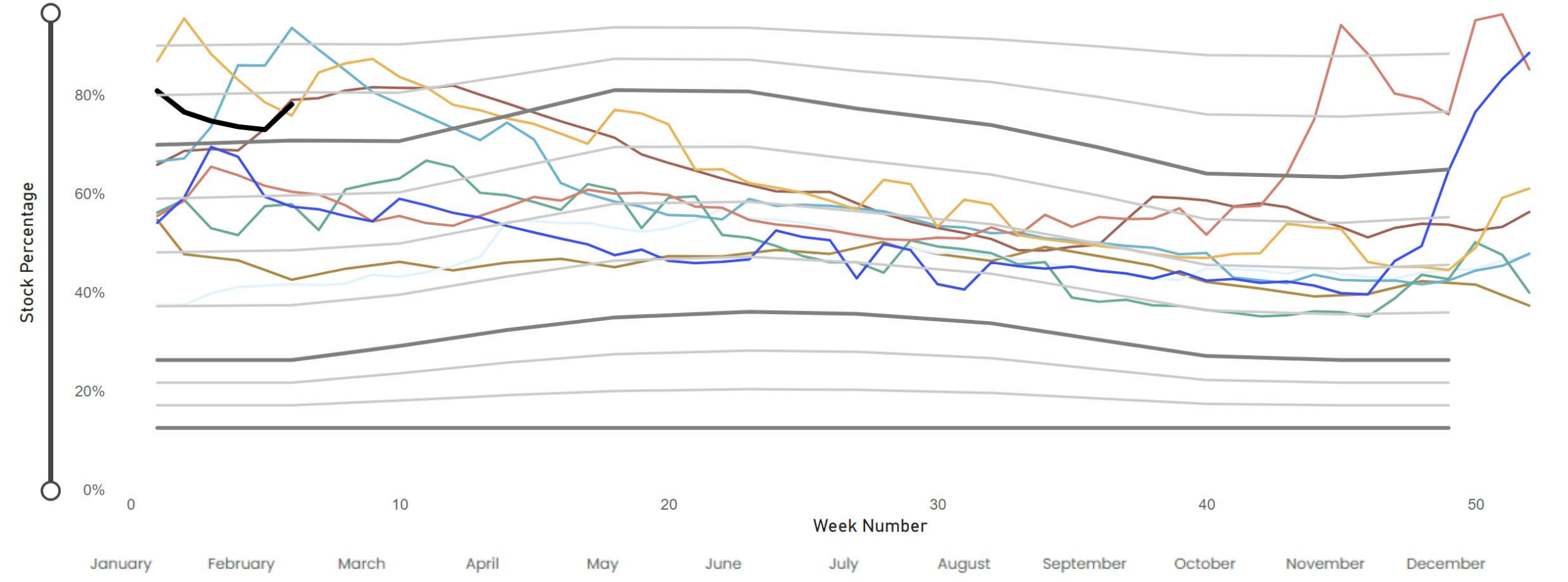
Current Stock
78.0%

Year Selection
Multiple selections ▾

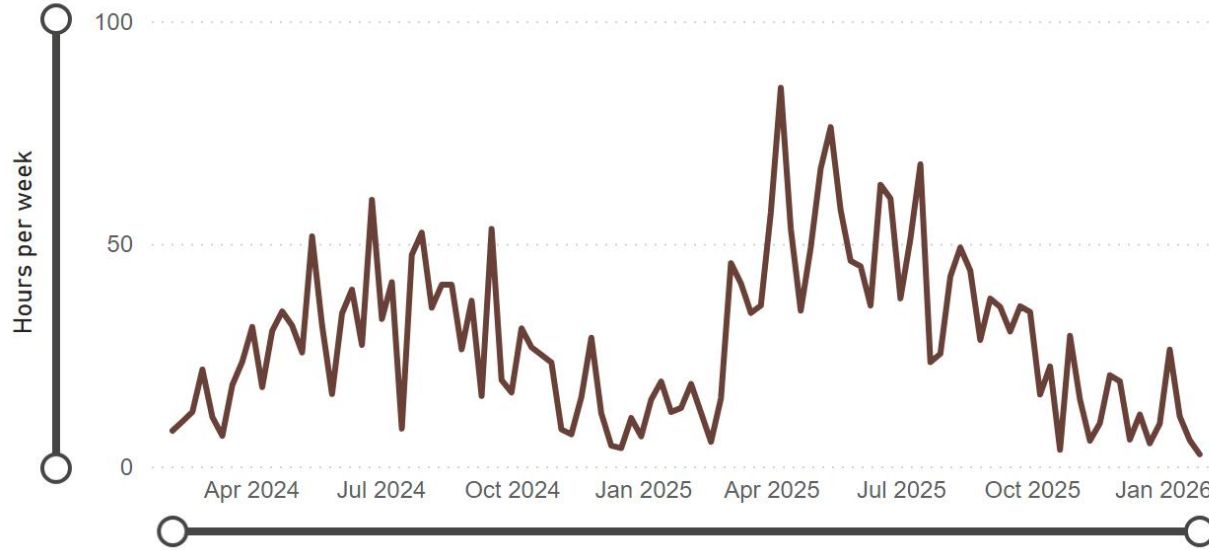
East Reservoir Group

(Hull Aquifer, Tophill Low)

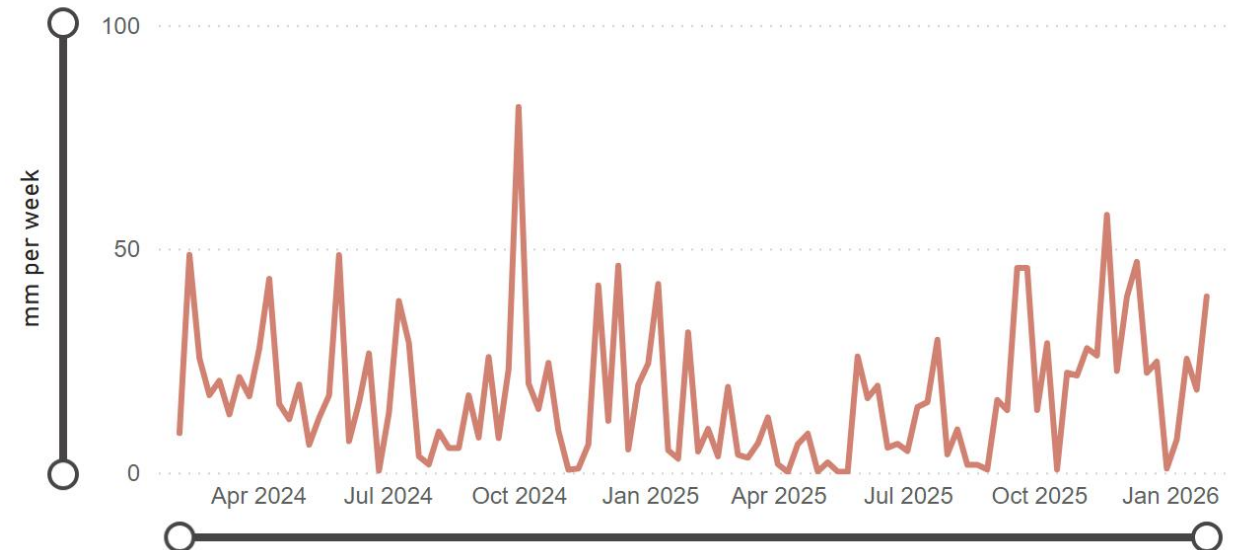
- 1995
- 1996
- 2006
- 2021
- 2022
- 2023
- 2024
- 2025
- 2026
- Control Line 1
- Control Line 2
- Control Li...
- Control Li...
- Control Li...
- Control Li...
- Control Li...
- Drought C...
- Emergenc...
- Normal ...



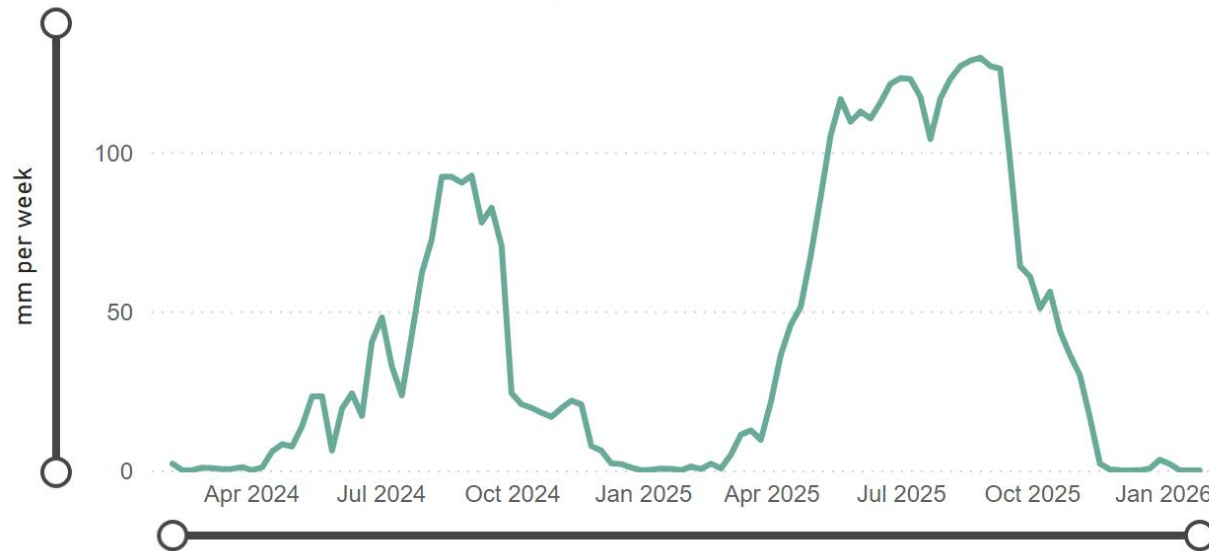
Average Sunshine



Average Rainfall



Soil Moisture Deficit



Data Up To

31 December 2025

This page will normally be updated monthly (approx mid month).

This data may be subject to change following routine validation checks.

Where showing a negative value, this is normal at certain sources, due to the imports of water into that source being greater than the volumes abstracted.

Serial No	Source	Reporting Year	Month MI	Year to date MI	Annual Limit MI	% of Annual Limit
02/27/023/332	Ainderby Steeple Boreholes	C	105.2	1422	1760	80.8%
03/28/083/010	Armthorpe Boreholes	C	215.3	2837	3319	85.5%
03/28/083/012	Austerfield Boreholes	C	205.0	2271	11615	19.6%
02/27/022/020	Aysgarth & Newbiggin Springs	C	19.7	192	341	56.6%
02/27/012/035	Baitings, Ryburn & Blackhouse reservoirs	C	-2.1	4989	20457	24.4%
02/27/023/032	Bellerby Borehole and springs near Bellerby	F	66.2	634	1250	50.8%
02/27/022/209	Birk Gill & River Burn	C	216.3	4147	6400	64.8%
02/27/012/254	Boothwood Reservoir & associated catchwaters	C	195.3	3531	20457	17.3%
02/27/10/112	Boshaw Whams Reservoir	C	0.0	0	55	0.0%
03/28/083/105	Boston Park Boreholes	C	173.7	2067	3318	62.3%
02/27/024/305	Brayton Barff Boreholes	C	0.0	0	2250	0.0%
02/26/030/002	Bridlington	C	144.6	1966	2500	78.6%
02/27/005/031	Broomhead Reservoir	F	770.2	6641	12410	53.5%
02/26/030/004	Burton Agnes	C	78.6	919	1000	91.9%

Data Up To

31 December 2025

This page will normally be updated monthly (approx mid month).

This data may be subject to change following routine validation checks.

Where showing a negative value, this is normal at certain sources, due to the imports of water into that source being greater than the volumes abstracted.

Serial No	Source	Reporting Year	Month MI	Year to date MI	Annual Limit MI	% of Annual Limit
02/27/018/080	Carlton Hanger Lane Boreholes	C	196.6	2791	3500	79.7%
02/27/018/079	Carlton Mill Lane Boreholes	C	153.7	1974	3800	52.0%
02/27/019/009	Carr Bottom Reservoir, Burley Woodhead	C	2.6	41	409	10.1%
02/27/023/340	Catterick Boreholes	F	202.9	1829	3650	50.1%
02/27/027/136	Cayton Carr Lane Boreholes	C	129.7	1086	3928	27.7%
02/27/027/163	Cayton Station Road Borehole	C	68.5	1252	2646	47.4%
02/27/019/137	Chelker Reservoir	C	443.7	2312	5000	46.3%
02/27/023/031	Coalsgarth Springs	C	7.3	63	750	8.5%
02/27/011/064	Colne Valley Catchwaters	F	79.5	3415	5840	58.5%
02/26/032/126	Cottingham Well	C	707.3	10116	18184	55.6%
02/27/018/081	Cowick Boreholes	C	374.4	4401	5250	83.8%
02/27/023/046	Cranehow & Downholme Springs	C	7.3	7	318	2.3%
02/27/023/030	Crumma, Newsham & Gandale Springs	C	66.9	701	1364	51.4%
02/27/005/030	Dale Dyke & Agden Reservoirs	F	945.3	7945	21412	37.1%
02/27/012/261	Dean Head & Scammonden	F	39.1	1682	3650	46.1%
02/27/19/121	Dib Spring, Hawkswick	C	0.0	0	27	0.0%
02/26/032/126	Dunswell Well	C	650.4	7451	16593	44.9%
NE/27/025/021	East Ness Boreholes	F	285.4	2421	5680	42.6%
02/26/031/087	Elmswell Wold Borehole	C	35.2	220	1273	17.3%
02/27/015/045	Embsay Reservoir	C	293.0	1254	1846	68.0%
02/27/016/196	Esholt Sewage Treatment Works	C	0.0	0	88	0.0%
02/26/032/124	Etton Boreholes	C	79.5	1488	5100	29.2%
03/28/083/012	Finningley Boreholes	C	312.6	3731	6780	55.0%
02/27/022/328	Fossdale (High Shaw) Springs	C	11.6	119	227	52.4%

Data Up To

31 December 2025

This page will normally be updated monthly (approx mid month).

This data may be subject to change following routine validation checks.

Where showing a negative value, this is normal at certain sources, due to the imports of water into that source being greater than the volumes abstracted.

Serial No	Source	Reporting Year	Month MI	Year to date MI	Annual Limit MI	% of Annual Limit
02/27/018/120	Goosehouse Boreholes	C	275.7	2882	3500	82.4%
02/27/012/043	Gorpley Reservoir	C	0.0	0	1823	0.0%
02/27/016/022	Graincliffe Reservoir	F	381.6	494	2728	18.1%
02/27/012/037	Green Withens Ringstone Res & catchwater	C	467.6	4726	20457	23.1%
02/27/019/051	Greenhow Tunnel (Nidd Aqueduct) Dale Head Intake	C	0.0	0	214	0.0%
02/27/019/052	Greenhow Tunnel (Nidd Aqueduct) No.2 Access Shaft	C	0.0	0	6819	0.0%
NE/27/019/005	Grimwith Reservoir to Nidd Aqueduct	F	0.0	1763	3650	48.3%
02/26/030/003	Haisthorpe Boreholes	C	182.1	2577	5000	51.6%
03/28/083/012	Hatfield Boreholes	C	114.6	1416	3319	42.7%
03/28/083/100	Hatfield Woodhouse Boreholes	C	0.0	0	3320	0.0%
02/27/029/010	Hazel Head Springs	C	52.9	424	1162	36.6%
02/27/012/041	Hebden, Luddenden & Hebble Valley Resrs	F	1294.0	8859	15695	56.4%
02/27/018/077	Heck Boreholes	C	0.8	18	2489	0.7%
03/28/083/012	Highfield Lane Boreholes	C	426.8	5187	11615	44.7%
02/27/023/685	Hollin Hill Borehole	F	0.0	25	45	56.8%
02/27/010/063	Holmestyes & Digley Reservoirs	F	224.0	1387	5840	23.8%
02/27/22/024	Horsehouse Spring, leyburn	C	0.0	0	33	0.0%
02/27/027/002	Howe Hill Well	F	78.5	711	1014	70.2%
02/26/031/006	Hutton Cranswick	C	45.5	551	796	69.3%
02/27/005/012	Ingbirchworth Reservoir & Annat Royd Intake	C	128.2	1647	3637	45.3%
02/27/005/202	Ingbirchworth South Borehole	F	4.1	36	132	27.5%
02/27/027/058	Irtton	C	447.7	5555	8215	67.6%
02/27/21/015	John O'Gaunts and Beaverdyke Reservoirs	C	0.0	0	1909	0.0%
02/27/014/010	Keighley Moor Reservoir	F	15.2	365	6951	5.3%
02/27/025/128	Keld Head Boreholes	C	174.6	2130	3319	64.2%
02/26/032/126	Keldgate Boreholes	C	147.0	3180	5819	54.7%
02/26/031/002	Kilham	C	1.5	120	1818	6.6%

Data Up To

31 December 2025

This page will normally be updated monthly (approx mid month).

This data may be subject to change following routine validation checks.

Where showing a negative value, this is normal at certain sources, due to the imports of water into that source being greater than the volumes abstracted.

Serial No	Source	Reporting Year	Month MI	Year to date MI	Annual Limit MI	% of Annual Limit
02/27/005/032	Langsett Reservoir	C	1153.0	11710	17155	68.3%
02/27/022/210	Leighton Reservoir & Spruce Gill stream intake	C	889.5	4622	13184	35.1%
03/28/083/107	Littleworth Borehole	C	0.6	6	1659	0.4%
02/27/028/270	Loftsome Bridge ASR Borehole No.1	C	0.0	0	150000	0.0%
02/27/014/009	Lower Laithe Reservoir	F	157.2	1248	6951	18.0%
02/27/005/011	Midhope Reservoir & Knoll Brook Intake	F	301.8	1476	17155	8.6%
02/26/034/006	North Newbald	C	0.0	0	548	0.0%
03/28/083/012	Nutwell Boreholes	C	223.0	2483	4983	49.8%
02/27/019/006	Panorama, Hilltop & Old Reservoirs & Springs	C	0.0	262	1000	26.2%
02/27/018/078	Pollington Boreholes	C	150.9	2374	5000	47.5%
02/27/014/058	Ponden Reservoir	F	161.7	1190	6951	17.1%
02/27/016/023	Reva Reservoir, Hawkesworth	C	-1.1	590	1364	43.3%
02/27/005/029	Rivelin and Redmires Reservoirs	F	979.9	2765	8030	34.4%
02/27/028/017	River Derwent at Elvington	F	4681.7	49456	75000	65.9%
02/27/028/083	River Derwent at Loftsome Bridge	F	2020.9	17970	30400	59.1%
02/27/029/012	River Esk	C	278.8	3387	7823	43.3%
02/26/031/047	River Hull & West Beck	C	1738.7	15377	25000	61.5%
02/26/032/194	River Hull for Sewer Cleaning	C	0.0	0	91	0.0%
02/27/024/078	River Ouse at Acomb	F	880.7	8211	35000	23.5%
02/27/024/158	River Ouse at Moor Monkton	F	2477.0	28705	73000	39.3%
02/27/022/214	River Ure at Kilgram Bridge	F	36.5	4716	15000	31.4%
02/27/020/196	River Wharfe at Arthington	F	752.2	4740	19009	24.9%
02/27/019/129	River Wharfe at Lobwood	F	1680.3	18819	27392	68.7%
03/28/083/012	Rossington Bridge Boreholes	C	0.0	0	5172	0.0%
02/27/022/027	Roundhill and Lumley Moor Reservoirs	C	41.6	269	3500	7.7%
02/27/005/013	Royd Moor Reservoir & Intakes	C	261.4	1314	2955	44.5%

Data Up To

31 December 2025

This page will normally be updated monthly (approx mid month).

This data may be subject to change following routine validation checks.

Where showing a negative value, this is normal at certain sources, due to the imports of water into that source being greater than the volumes abstracted.

Serial No	Source	Reporting Year	Month MI	Year to date MI	Annual Limit MI	% of Annual Limit
02/27/021/016	Scargill Reservoir	C	70.0	1012	1932	52.4%
02/27/021/092	Scarhouse & Angram Resvrs with tunnel & catchwater	C	2511.4	34947	38164	91.6%
02/27/15/149	Silsden Beck, Stilling-Basin at foot of Silsden Reservoir Embankment	C	0.0	0	10	0.0%
02/26/032/126	Springhead Well	C	563.2	7956	13638	58.3%
02/27/022/021	Stalling Busk & Marsett Springs	C	0.0	0	33	0.0%
02/27/022/208	Stock Beck, Carlesmoor Beck & River Laver	C	0.0	3450	3500	98.6%
02/27/023/684	Stubbing Nook Borehole	F	0.0	89	135	66.6%
03/28/083/012	Thornham Boreholes	C	299.7	3593	6213	57.8%
02/27/016/160	Thornton Moor & Stubden Reservoirs	C	258.5	2528	6214	40.7%
02/27/012/038	Turvin Clough	C	367.2	1828	4014	45.6%
02/27/019/054	Upper & Lower Barden Reservoirs	C	730.5	6816	14223	47.9%
02/27/020/088	Washburn Valley Reservoirs	C	2527.3	27132	43800	61.9%
02/27/015/041	Watersheddles Reservoir	F	174.3	1150	6951	16.5%
02/27/016/021	Weecher Reservoir	C	1.0	104	909	11.5%
02/27/011/065	Wessenden Valley, Blackmoorfoot & Deerhill	F	1070.6	5791	12410	46.7%
02/27/023/034	West Stonesdale (Garland Hill) Springs	C	0.0	0	282	0.0%
02/27/015/042	Whinney Gill & Jenny Gill Reservoirs	C	0.0	0	377	0.0%
02/27/005/026	Winscar, U & L Windleden, Harden & Snailsden	F	285.7	5888	10140	58.1%
02/27/012/036	Withens Clough Resr & Catchwater	C	36.0	1421	3319	42.8%
02/27/010/011	Yateholme, Riding Wood, Ramsden & Brownhill	F	240.9	2427	6820	35.6%

Licences with Aggregated Annual Quantities

Source	Reporting Year	Month MI	Year to date MI	Annual Limit MI	% of Annual Limit
Austerfield & Highfield Lane	C	632.0	7459	9956	74.9%
Baitings, Ryburn, Boothwood, Green Withens	C	661.0	13248	20457	64.8%
Cayton, Irton	C	646.0	7895	10700	73.8%
Doncaster Sub Group	C	1582.0	18684	26049	71.7%
Doncaster Wellfield	C	1971.0	23595	30295	77.9%
Hull Groundwater Sources	C	2068.0	28704	32850	87.4%
Langsett, Midhope	C/F	1455.0	13187	17155	76.9%
River Derwent (Elvington, Loftsome)	F	6703.0	67427	94841	71.1%
Selby Boreholes	C	1152.0	14443	25283	57.1%
Worth Valley	F	508.0	3954	6951	56.9%

Aggregated Data Up To

31 December 2025

This page will normally be updated monthly (approx mid month).

This data may be subject to change following routine validation checks.

Where showing a negative value, this is normal at certain sources, due to the imports of water into that source being greater than the volumes abstracted.

Third Party Agreements (Calendar Year)

Source	Reporting Year	Month MI	Year to date MI	Annual Limit MI	% of Annual Limit
CRT, Hudds Narrow Canal	C	0.7	813	1273	63.9%
Severn Trent Ladybower Reservoir	C	1307.0	16330	21550	75.8%

Third Party Data Up To

31 December 2025

Transfer

Source	Reporting Year	Month MI	Year to date MI	Annual Limit MI	% of Annual Limit
Winscar To Langsett Transfer Usage	F		1618	2482	65.2%

Transfer Data Up To

31 December 2025