

1. Rainfall

The Yorkshire Region Has Received 85.5% of LTA for October

2. Reservoirs (surface water supply reservoirs not including Hull)

Over the Past Week Our Reservoir Stocks Have Decreased By -0.04% To 83.0%

3. Rivers

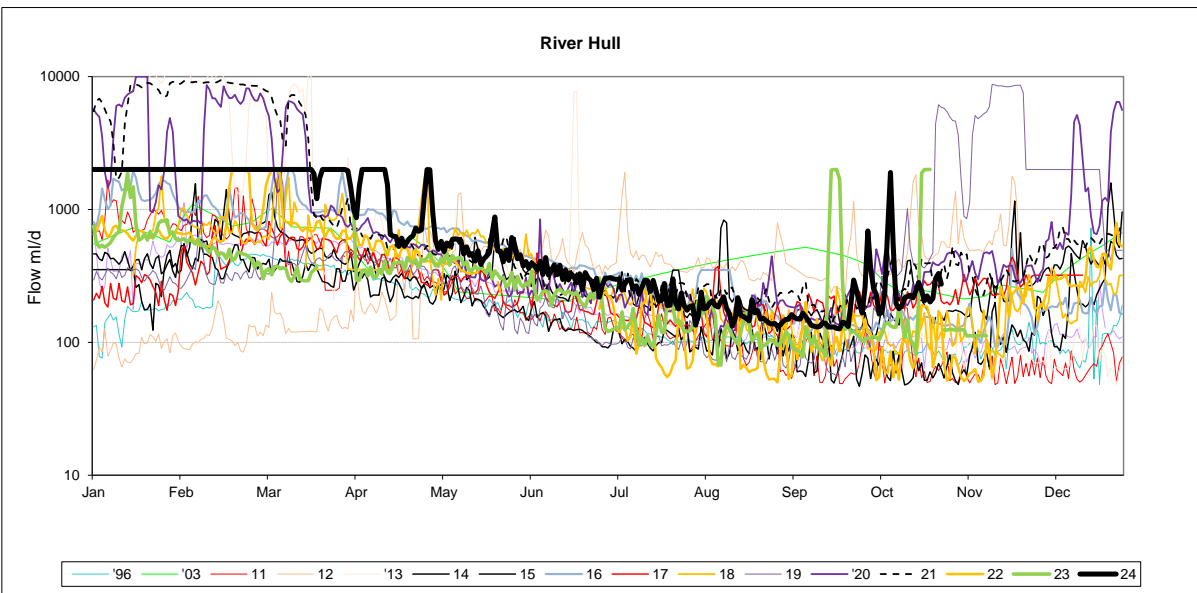
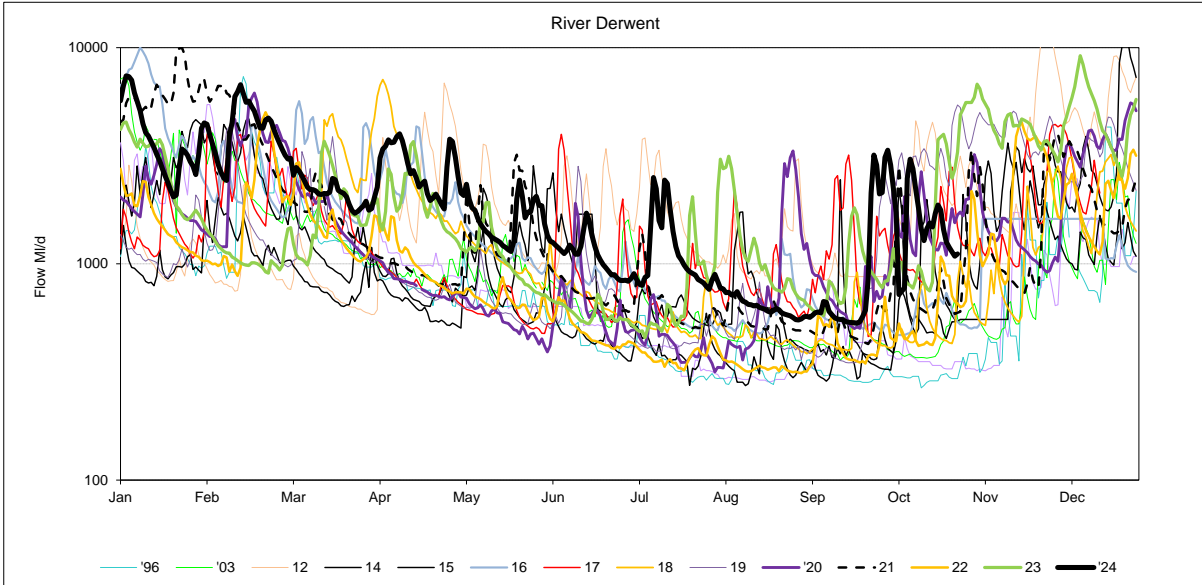
All of Our Rivers are Above Critical Levels

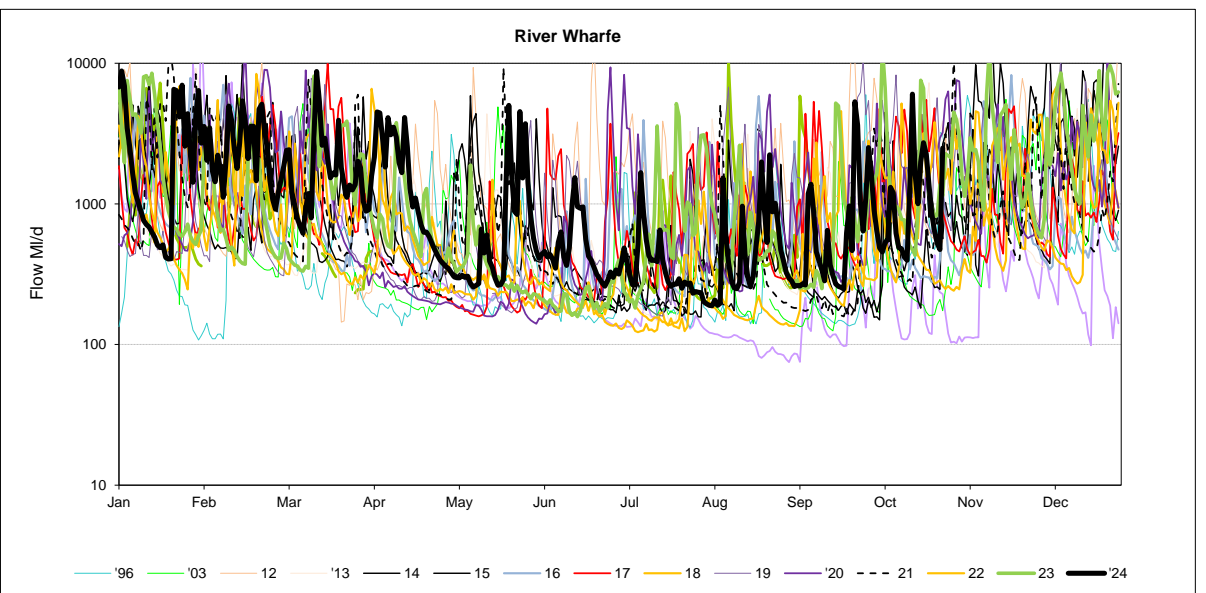
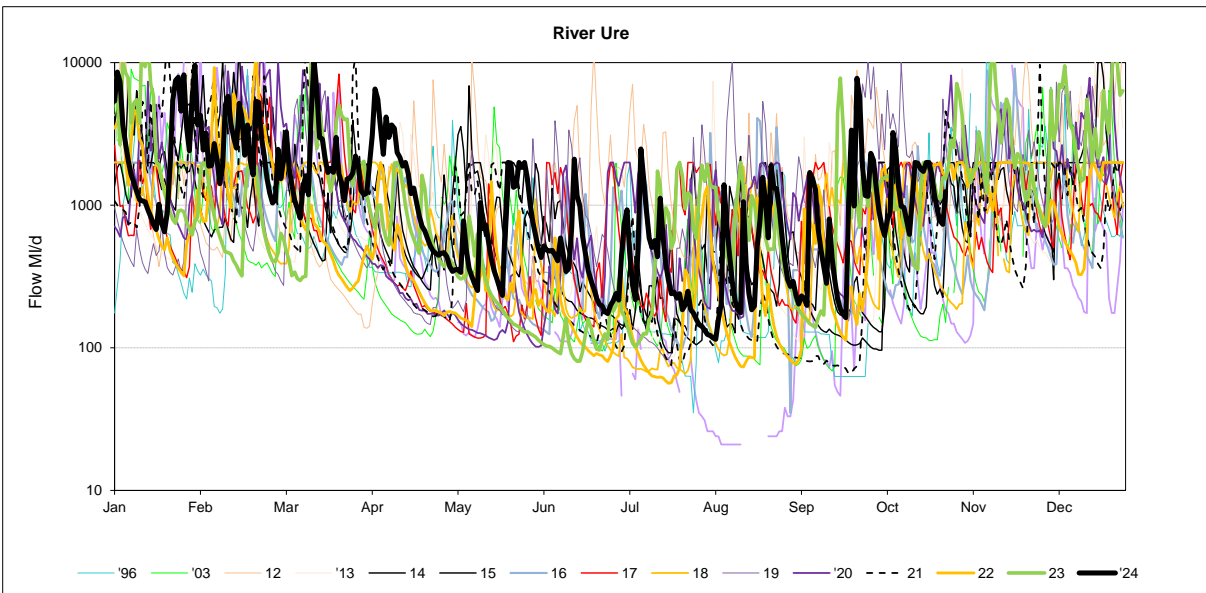
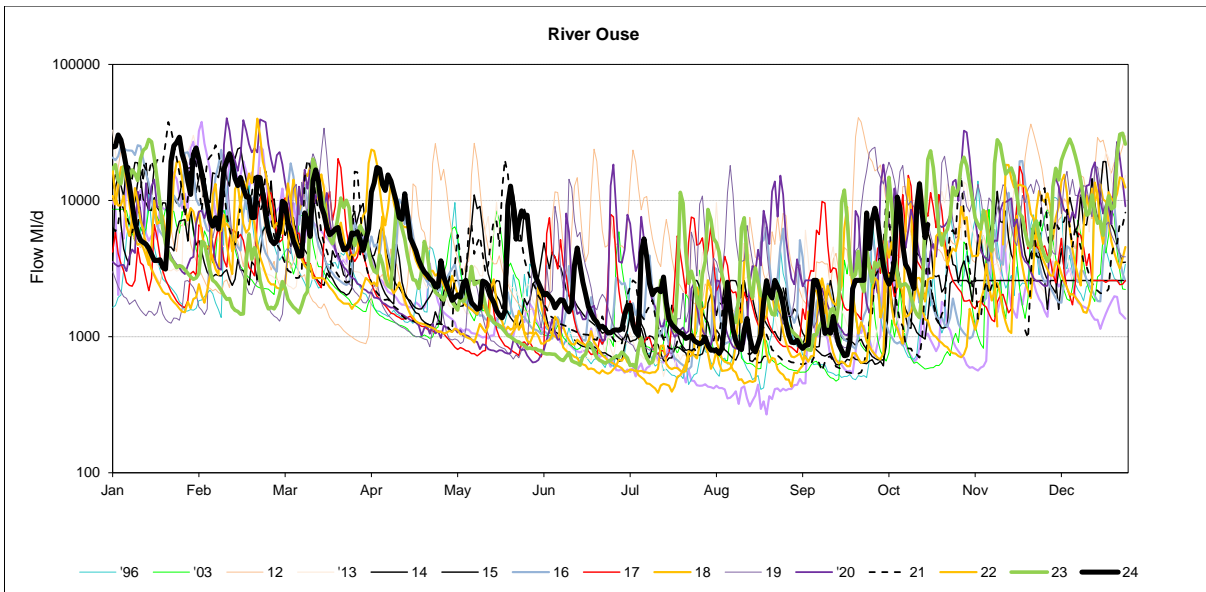
4. Demand

Regional Demand = 1304.8 Ml/d (including York)

5. Comments

	Mon 28-Oct	Mon 21-Oct	Mon 14-Oct	Mon 07-Oct	Critical flow bands
Derwent	✓ 1112	✓ 1871	✓ 1816	✓ 722	305
Hull (using gauged (residual flows) only from 2011)	✓ 274	✓ 246	⚠ 187	⚠ 168	45 / 159 / 227
Ouse	✓ 2503	✓ 6672	✓ 3125	✓ 2429	400 / 650 / 1000
Ure	✓ 1245	✓ 1997	✓ 776	✓ 794	50 / 163 / 300
Wharfe	✓ 2495	✓ 2726	⚠ 419	⚠ 532	252 / 389 / 488 / 580





Yorkshire Region (Met Office)				England/Wales	
Month	mm	LTA	LTA(%)	mm	LTA(%)
March	79	59	133%	103	160%
April	95	58	165%	92	153%
May	81	55	148%	85	139%
June	48	72	67%	36	52%
July	74	69	108%	80	113%
August	30	77	39%	54	68%
September	118	71	167%	136	183%

SOURCE OF DATA : Hydrological Summary of Gt Britain, Institute of Hydrology

Yorkshire Water Services Data

Rainfall Station	Total October	LTA October	LTA % October
Tophill	NDA	52	0%
Cottingham	NDA	53	0%
Bridlington	NDA	57	0%
Roundhill	95.2	92	103%
Fewston	72.6	79	92%
Osmotherley	66.4	62	107%
Scar House	NDA	135	0%
Watersheddes	108.9	137	79%
Gt Walden Edge	86.4	133	65%
Walshaw Dean	105.0	137	77%
Blackmoorfoot	64.1	115	56%
Ramsden	97.2	142	68%
Redmires	NDA	94	0%
Langsett	150.2	93	162%
YORKSHIRE REGION	94.0	110.0	85%
EAST REGION	66.4	62.0	107%
PENNINE (WEST)	94.0	110.0	85%

NDA= No data available/lack of readings, impacts % LTA for the month

SOURCE OF DATA : YWS RAIN GAUGES- weekly, so monthly data may include previous month or miss start of month

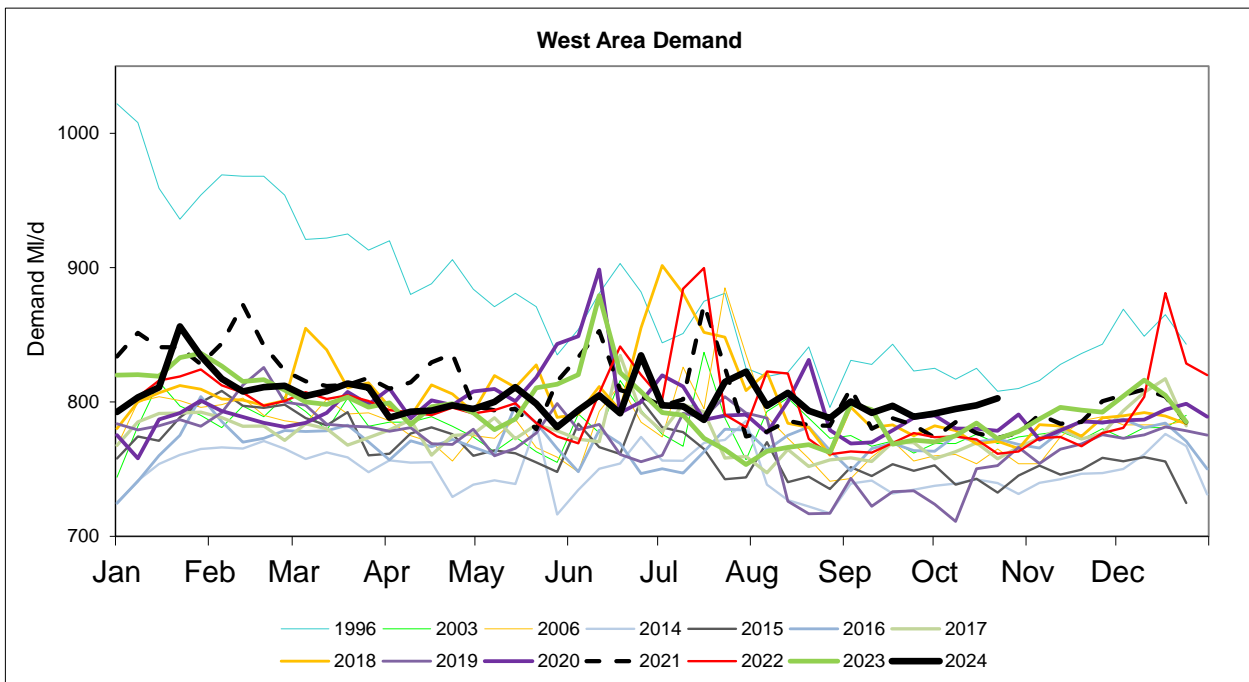
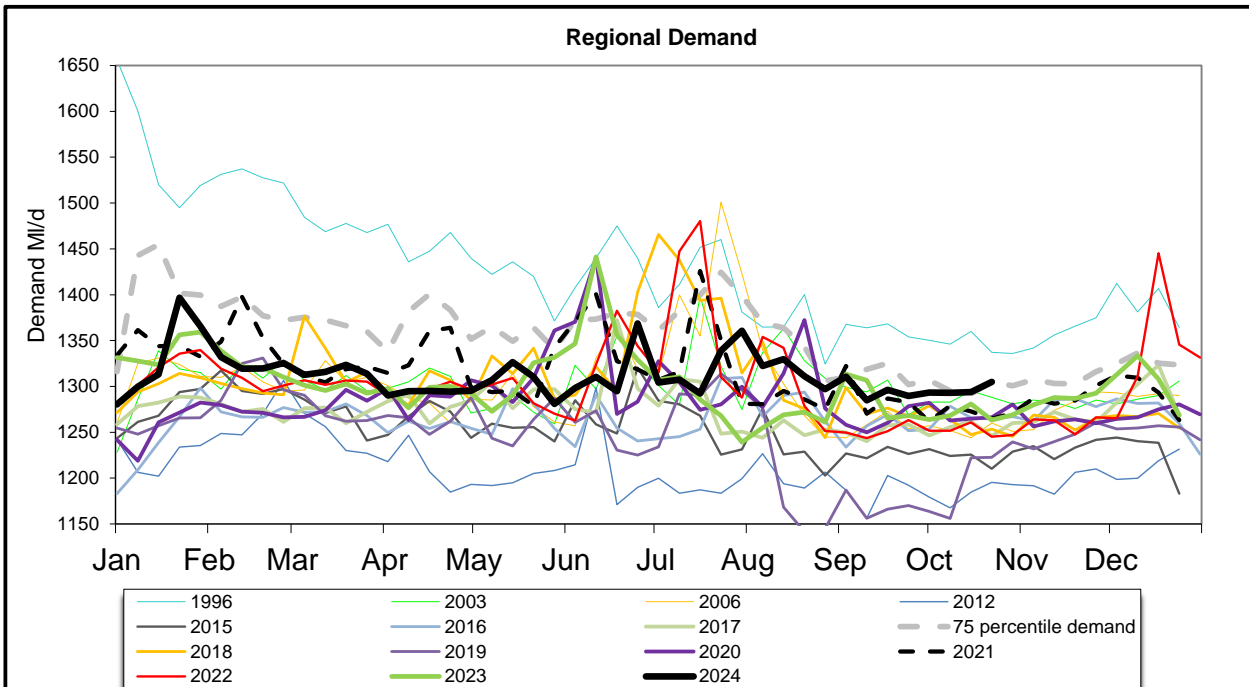
Daily Average Demand MI/d

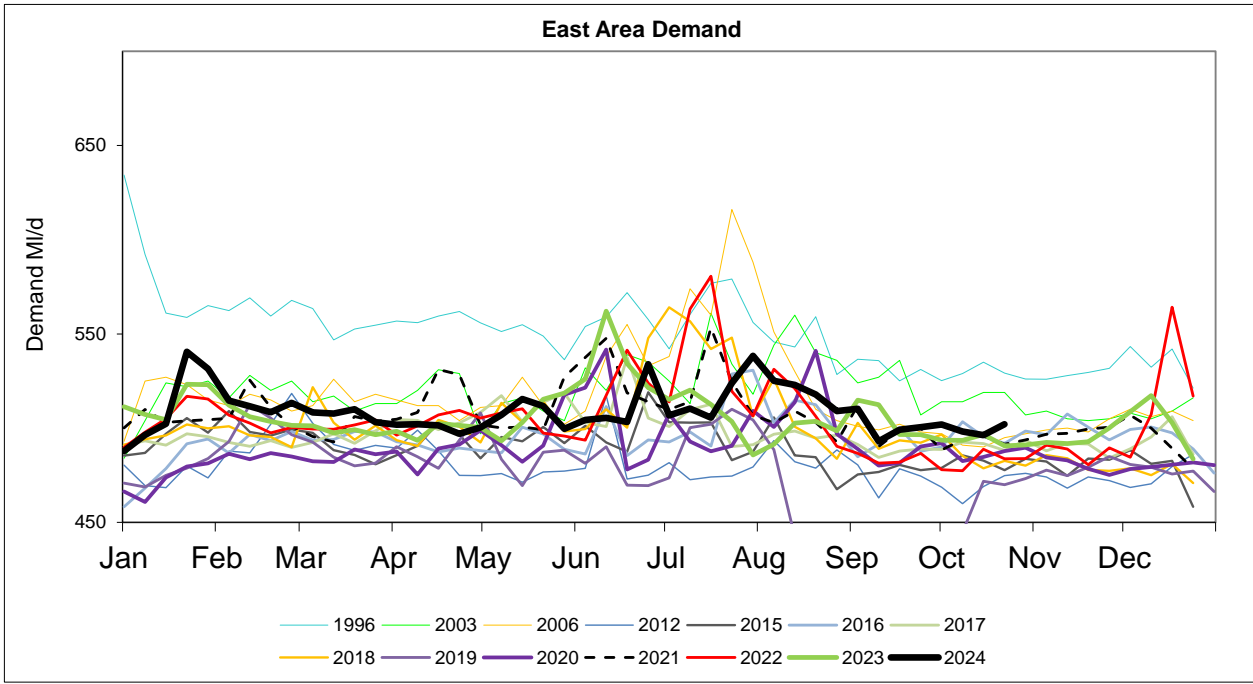
Week Ending Wednesday	L E S D S	W A M E + R F I E L D	S E L B Y	H A R R O G A T E	H U L L	M A L L T O N	S H E F F / B L Y	D O N C A S T E R	B R A D F O R D	C A L D E R	S K I P T O N	Y O R K A R E A	R E G I O N
25/09/2024	164	73	40	77	159	53	270	79	140	150	37	48	1290
02/10/2024	168	75	39	74	160	52	273	78	140	148	37	48	1293
09/10/2024	165	73	41	75	157	53	272	79	141	151	37	47	1293
16/10/2024	164	74	41	76	156	52	273	79	141	151	37	48	1294
23/10/2024	166	78	42	77	158	53	275	80	141	150	38	48	1305

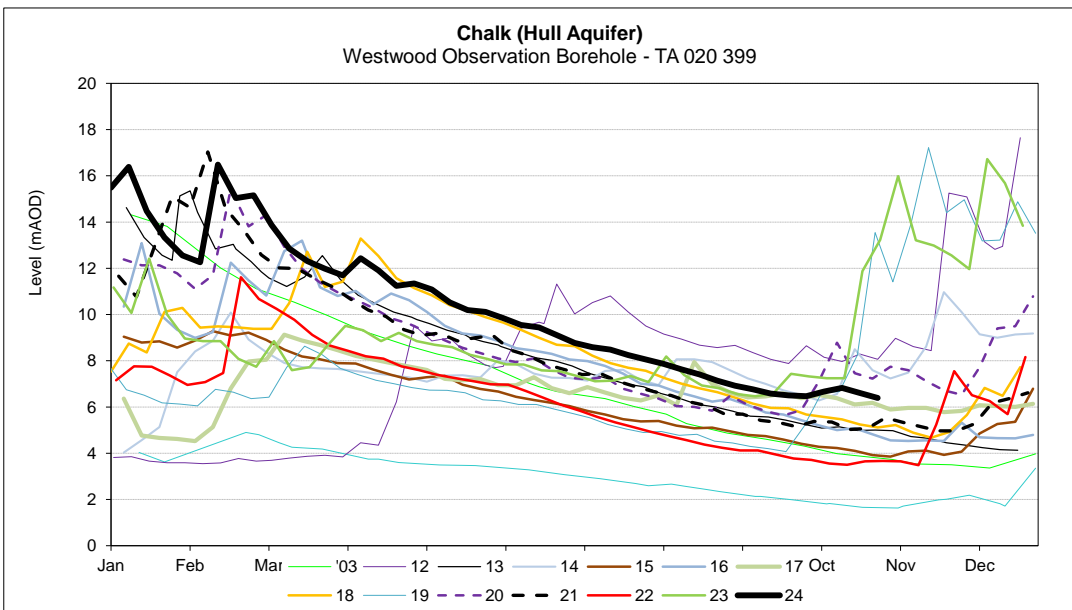
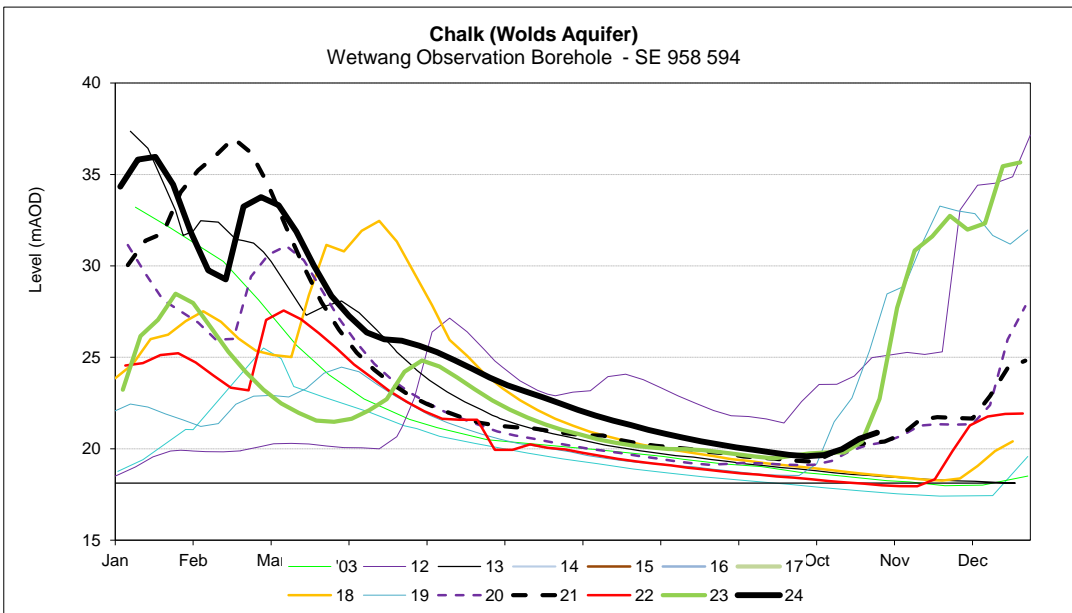
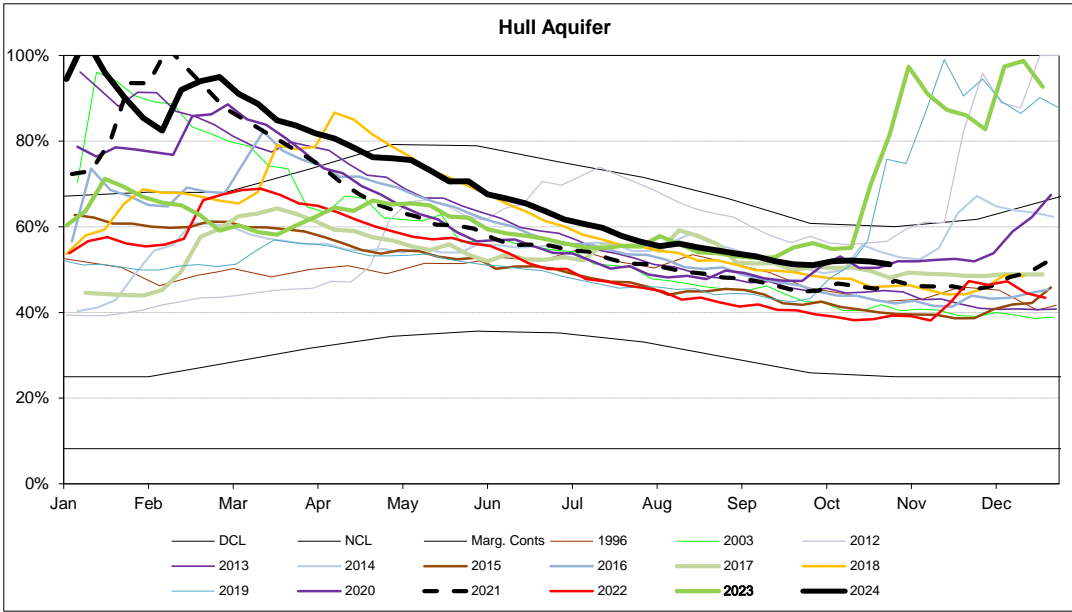
MONTHLY DEMANDS FROM WIS REPORT

Aug-24	158	64	41	74	177	58	280	74	140	149	36	45	1297
Sep-24	160	64	41	71	157	52	280	70	138	148	36	46	1263

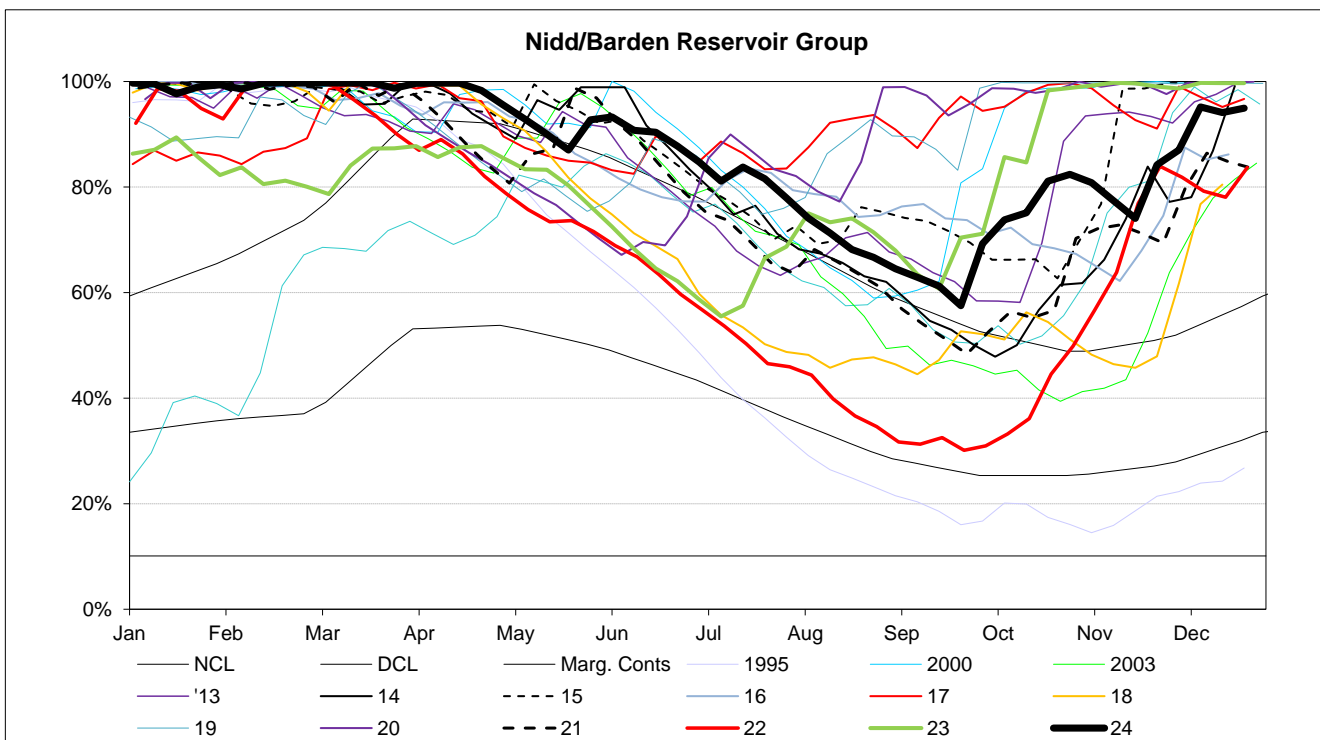
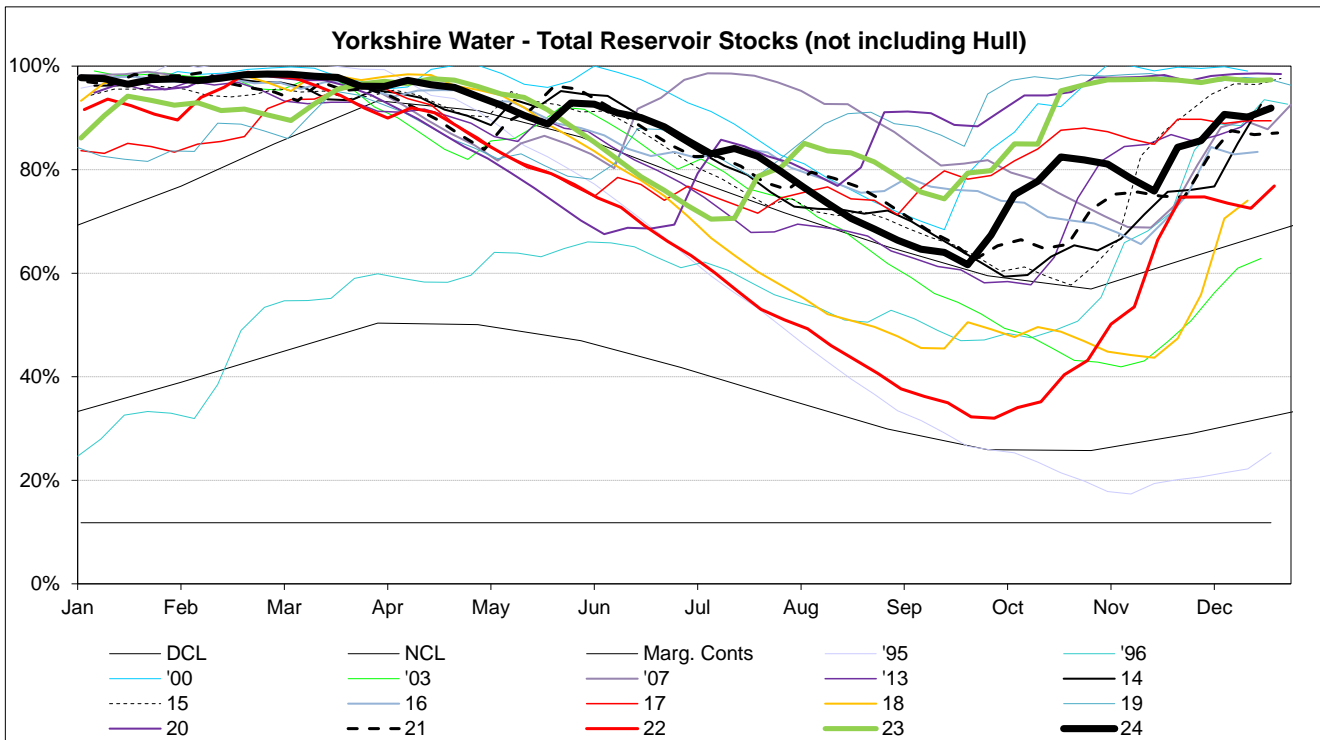
NB Current month demands include some estimates for minor sources and are not exactly comparable with previous months' figures.



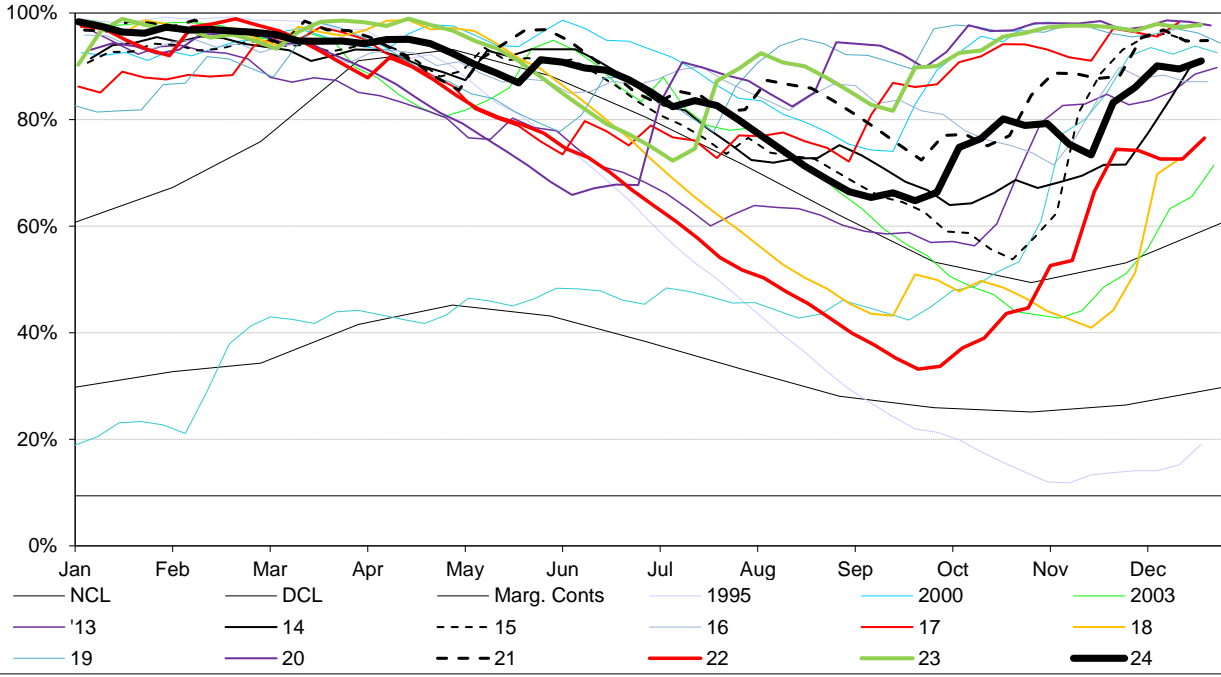




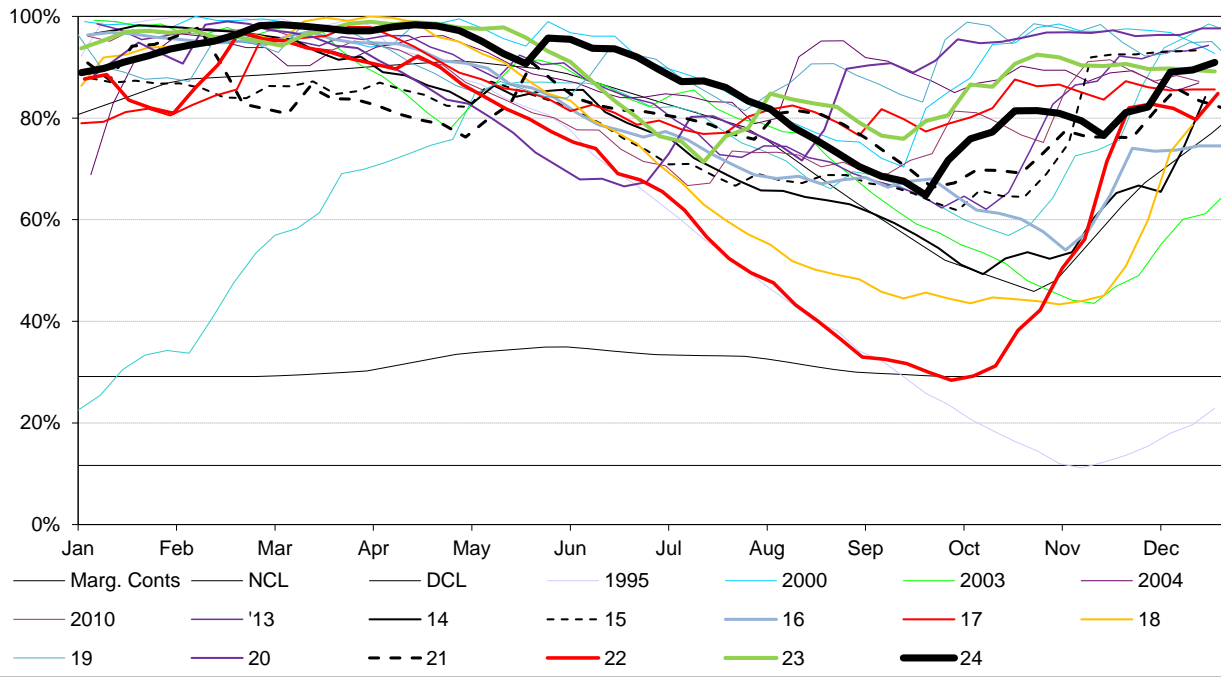
RESERVOIR STOCKS	28/10/2024		% Change	Planned Reservoir Safety Work	Required Drawdown & Duration	
Reservoir Group	% Stocks @	% Change	last week	Reason for Drawdown		
Calderdale (excl Withens Clough)	65.8%	-3.4%	6.2%	Leakage Investigation Access for Tunnel Grouting at Middle IRE Increase Drawdown Capacity Leakage Investigation	Aug 24 - Oct 24 Apr 24 - Oct 24 May 25 - Sept 25 Apr 25 - Sept 25	82.0% 28.0% 21.0% 51.0%
Boothwood/Ryburn (incl WC)	85.9%	-0.7%	5.4%			
(Gorpley)	71.7%	1.8%	9.2%			
Huddersfield	80.0%	0.0%	1.4%			
Brownhill/Digley	85.4%	-1.6%	0.8%			
Riding Wood	100.0%	0.0%	0.0%			
Walshaw Dean Lower	19.3%	-13.6%	6.0%			
Widdop	53.9%	-0.1%	8.2%			
Brownhill	99.8%	-0.2%	0.0%			
Calder Area Total	78.7%	-1.3%	3.6%			
Nidd/Barden/Chelker	82.4%	1.3%	6.0%	Embankment Stability Works Repair Ground Anchor Seepage Investigation Pointing Jet Wash Spillway and Survey	Jan 23 - Dec 24 Aug 24 - Oct 24 Oct 24 - Dec 24 TBC TBC	86.0% 87.6% 34.0% 78.0% 87.0%
Grimwith	79.0%	1.4%	3.2%			
Worth Valley	93.4%	0.0%	1.1%			
March Ghyll	81.6%	4.7%	-9.0%			
Ponden	99.2%	-0.8%	0.0%			
Keighley Moor	60.6%	-4.7%	-10.4%			
Chelker	94.2%	0.2%	-0.7%			
Hewenden	100.0%	0.0%	0.0%			
North West Area Total	82.5%	1.1%	4.4%			
Washburn/Eccup Resrs.	81.4%	0.0%	4.2%	Outlet Channel Repairs Bridge Repairs Inspection of Overflow and Upstream Face	Dates tbc Dates tbc Aug 24 - Nov 24	93.0% TBC 83.0%
Thornton Steward	97.1%	6.1%	1.8%			
Leighton/Roundhill	100.0%	1.1%	9.1%			
Haverah Park	82.4%	-1.0%	16.4%			
Swinsty	77.9%	-10.4%	2.7%			
Thruscross	91.5%	3.2%	8.1%			
Cod Beck	100.0%	0.0%	0.0%			
North Area Total	85.9%	0.4%	6.3%			
Don Valley & Winscar	76.4%	-1.2%	0.5%	Damage to Overflow Channel Install Overflow Debris Barrier Overflow Investigation 0.0%	Nov 23 - Oct 25 June 24 - Feb 25 Apr 25 - Sept 25 0.0%	89.0% 95.0% 95.0% 0.0%
Rivelin Valley	100.0%	0.0%	0.7%			
Little Don	85.5%	-0.4%	5.0%			
Ewden Valley	94.2%	-0.7%	7.3%			
Loxley Valley	100.0%	0.1%	3.9%			
Redmires	77.7%	0.7%	3.3%			
Redmires Upper	73.1%	1.5%	3.9%			
Redmires Middle	84.7%	0.7%	8.2%			
Broomhead	94.2%	-0.7%	7.3%			
Strines	100.0%	0.0%	0.0%			
South Area Total	91.5%	-0.1%	4.5%			
Tophill Low	79.9%	3.8%	7.7%			
Hull Aquifer	51.2%	-0.6%	-0.2%			
East Area Total	53.6%	-0.3%	0.4%			
Regional Total (DCP) (not inc East Area)	79.6%	-0.1%	3.7%			
YORKSHIRE TOTAL (Supply) (not inc East Area)	83.0%	0.0%	4.2%			



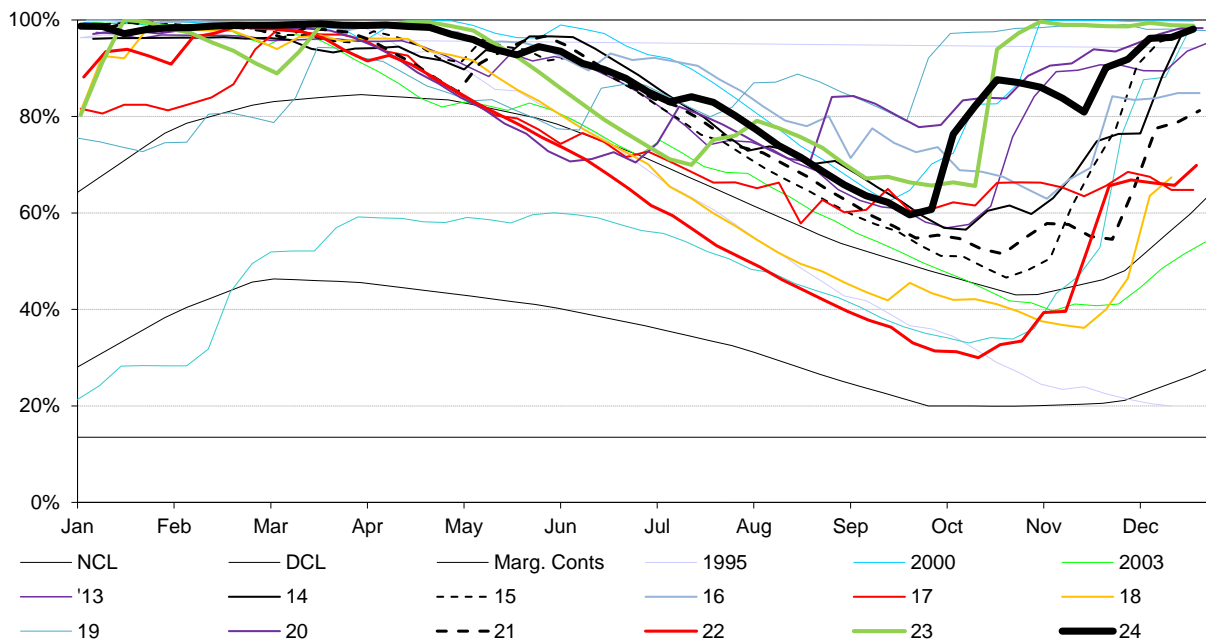
Calder Reservoirs



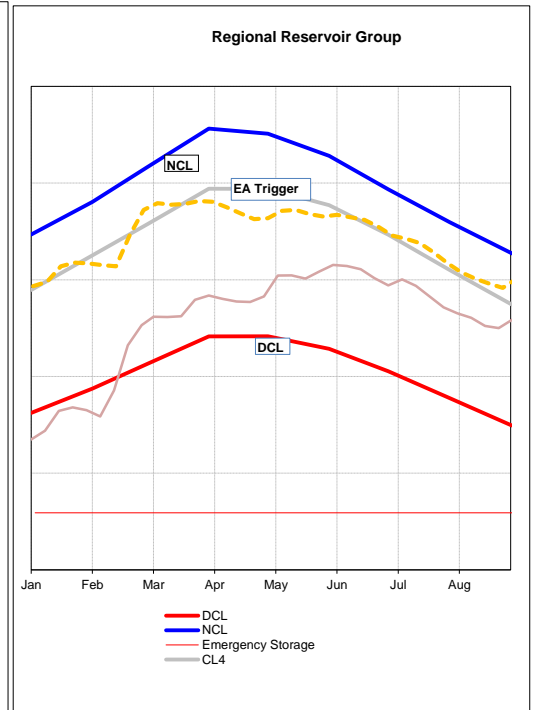
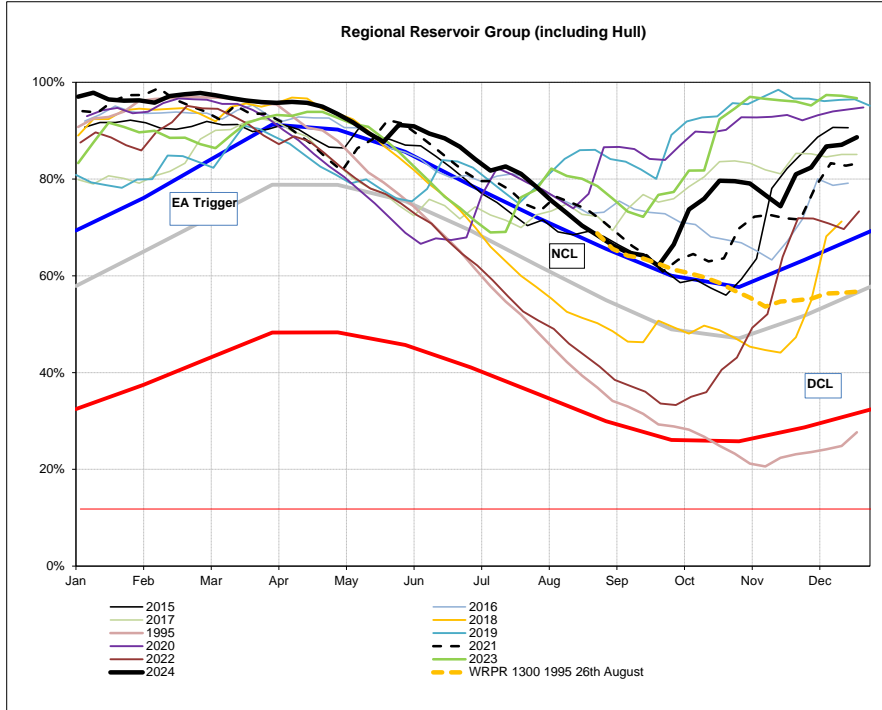
Washburn Reservoir Group inc Eccup



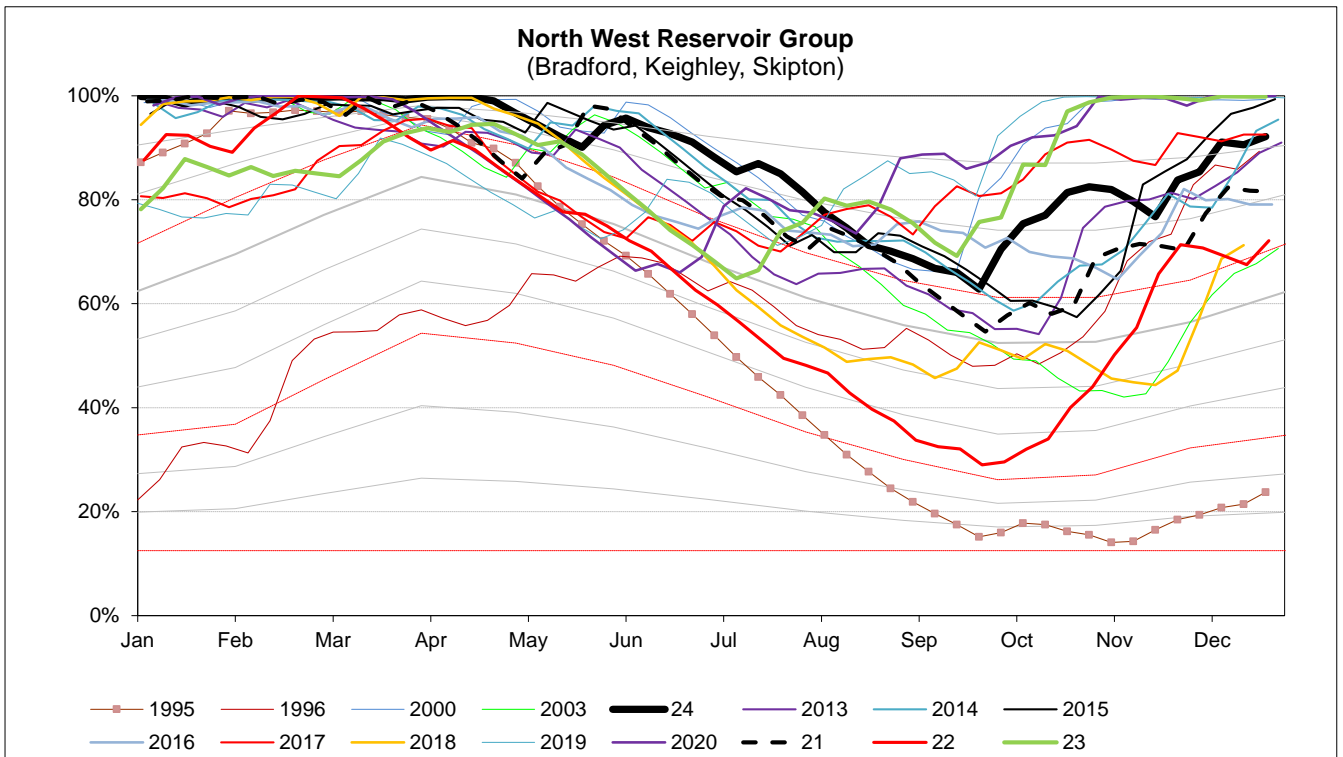
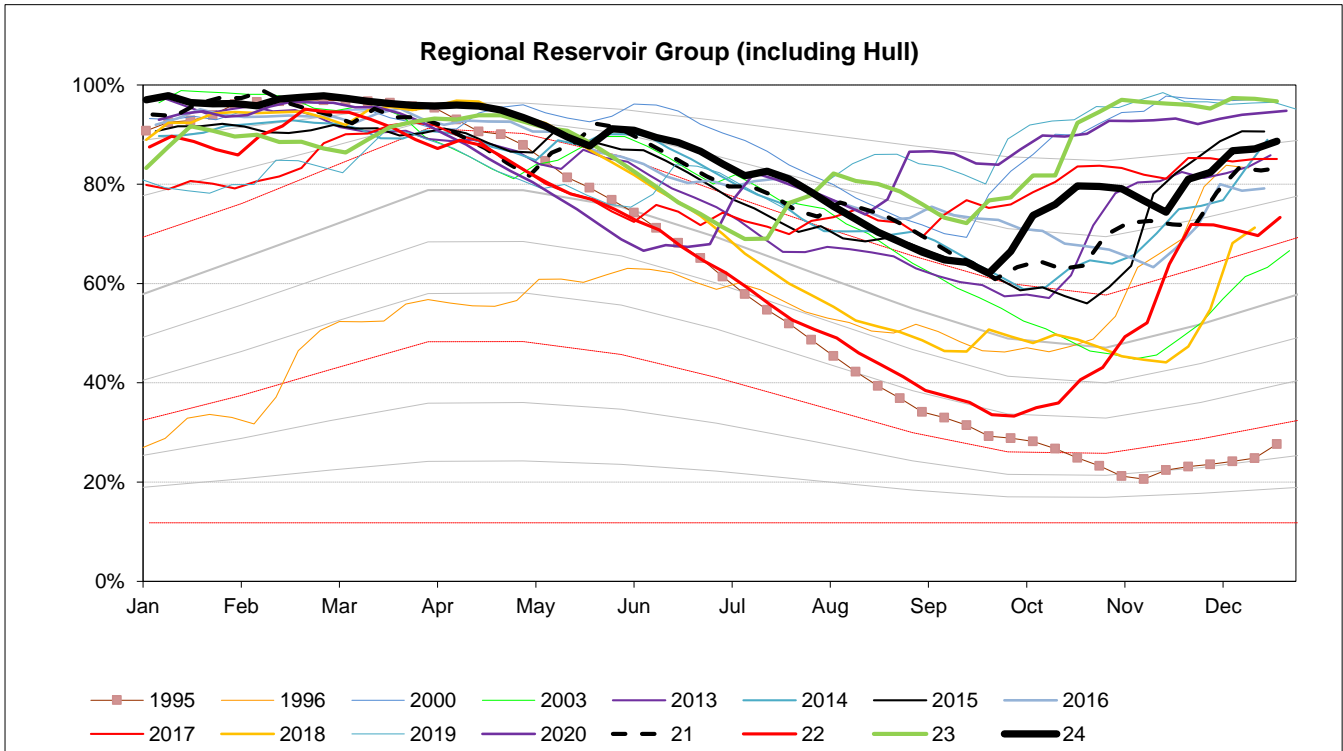
Sheffield & Barnsley Reservoirs



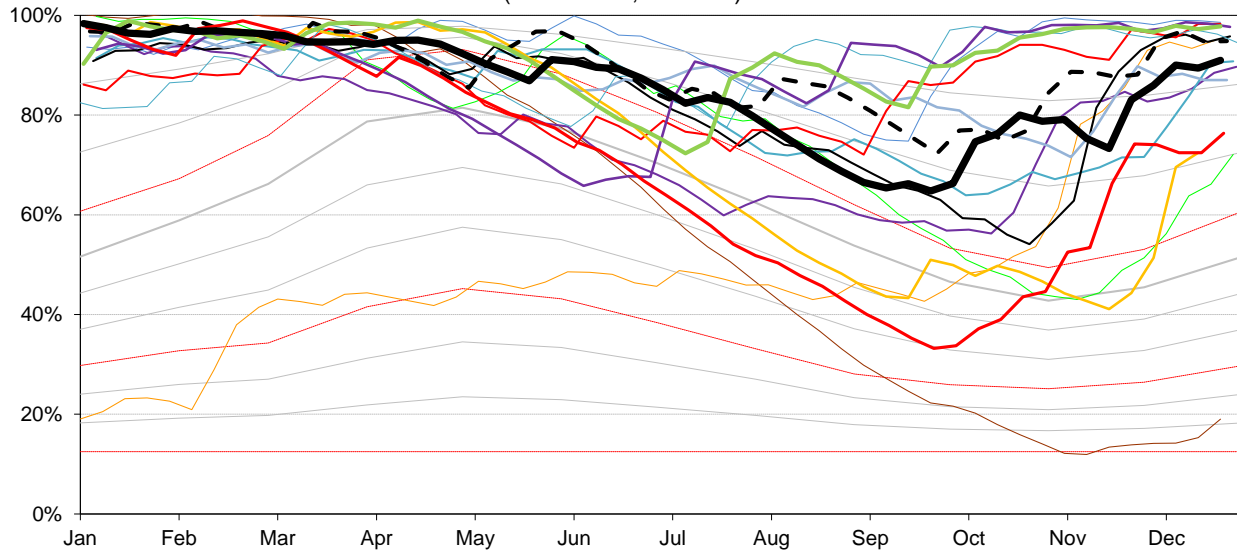
EA Stocks Report	28/10/2024						
	MI	%	% change		MI	%	% change
South West Area Supply Reservoirs				South Area Supply Reservoirs			
Calderdale Group	7324	65.8%	-3.4%	Don Valley	1935	93.1%	-0.1%
Huddersfield Group	11291	79.9%	-0.1%	Little Don	6301	85.5%	-0.4%
Brownhill/Digley excl Holmestye:	4749	84.6%	-1.7%	Ewden Valley	4650	94.2%	-0.7%
Boothwood/Ryburn	10307	88.1%	-0.4%	Loxley Valley	6874	100.0%	0.1%
				Rivelin	815	100.0%	0.0%
South West Reservoir Group	34682	78.7%	-1.3%	Redmires	2159	77.7%	0.7%
Bradford Area Supply Reservoirs				South Reservoir Group	22736	91.5%	-0.1%
Gouthwaite	5049	86.9%	-12.0%	Winscar Group	6825	73%	-1.6%
Grimwith	17187	79.0%	1.4%				
Nidd/Barden/Chelker	15804	82.4%	1.3%	Compensation Reservoirs			
Rombalds/Thornton Group	2145	96.1%	-1.4%	Scout Dike	694	100.0%	0.0%
				Underbank	2547	88.8%	-9.8%
Skipton Area Supply Reservoirs				Morehall	1122	51.6%	-0.3%
Embsay	723	100.0%	0.2%	Damflask	3968	77.7%	2.3%
Worth Valley Group	3093	93.4%	0.0%				
North West Reservoir Group	38952	82.5%	1.1%	North Area Supply Reservoirs			
				Washburn	19036	81.4%	0.0%
Compensation inc Silsden	2021	85.9%	0.5%	Eccup	4374	62.4%	3.4%
Gouthwaite	5049	86.9%	-12.0%	Leighton/Roundhill	7401	100.0%	1.1%
March Ghyll & Elslack Reservoirs excluded for consistency with stocks predictions in WRAPSIM				Haverah Park	825	82.4%	-1.0%
				Lumley Moor	381	100.0%	0.0%
				Thornton Steward	921	97.1%	6.1%
East Area Supply Reservoirs							
Tophill Low	1345	79.9%	3.8%	North Reservoir Group	28565	85.9%	0.4%
Hull Aquifer	9736	51.2%	-0.6%	Lindley Wood Compensation	815	27.9%	-2.9%
East Reservoir Group	11082	53.6%	-0.3%	Regional Reservoir Group	142841	79.6%	-0.1%
				(sum of South West, North West, East, South, North & Winscar Reservoirs)			



Triggers	
EA early warning (CL4)	Water resources to advise EA on production
Hosepipe Restrictions	When projected falling stocks fall below DCL
Drought Orders	When stocks are below DCL.

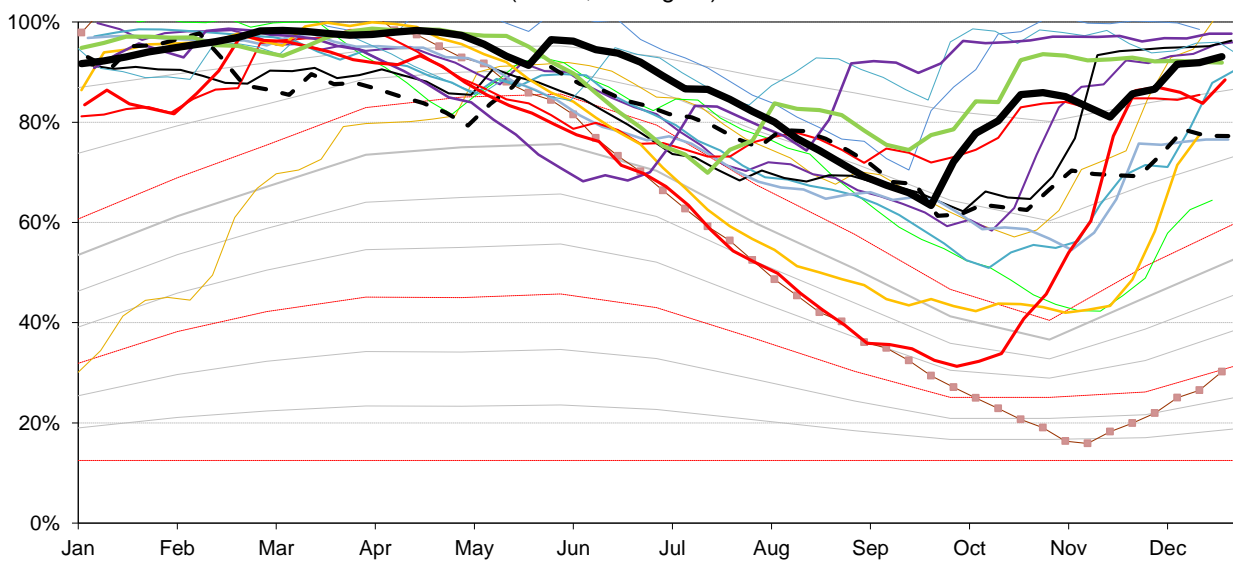


South West Reservoir Group
(Calderdale, Kirklees)



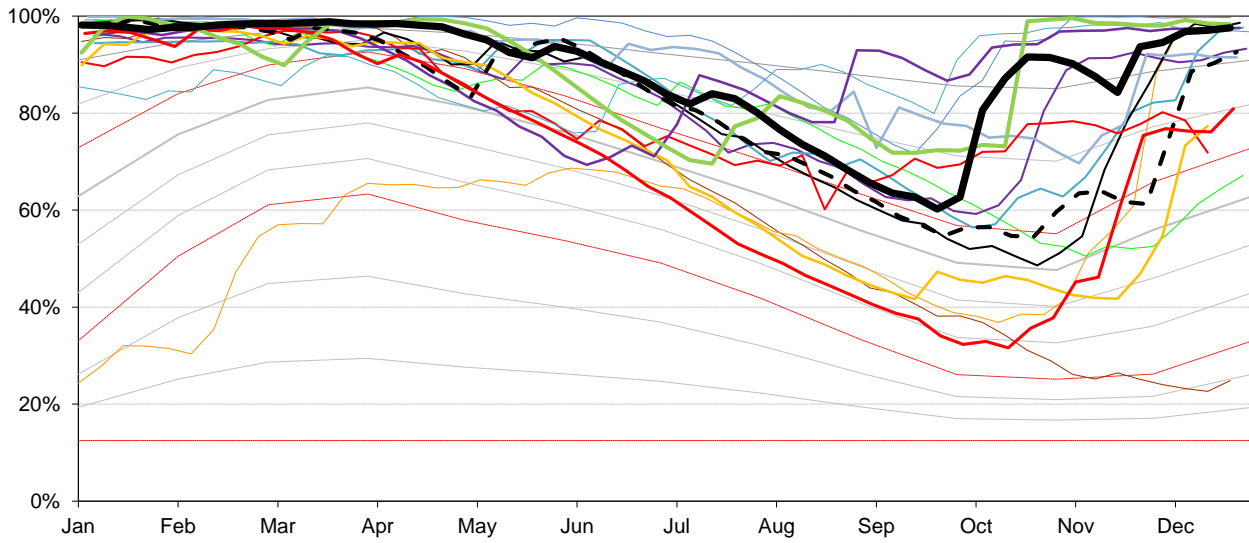
— 1995 — 1996 — 2003 — 2000 — 2013 — 2014 — 2015 — 2016
 — 2017 — 2018 — 2019 — 2020 - - 21 — 22 — 23 — 24

North Reservoir Group
(Leeds, Harrogate)



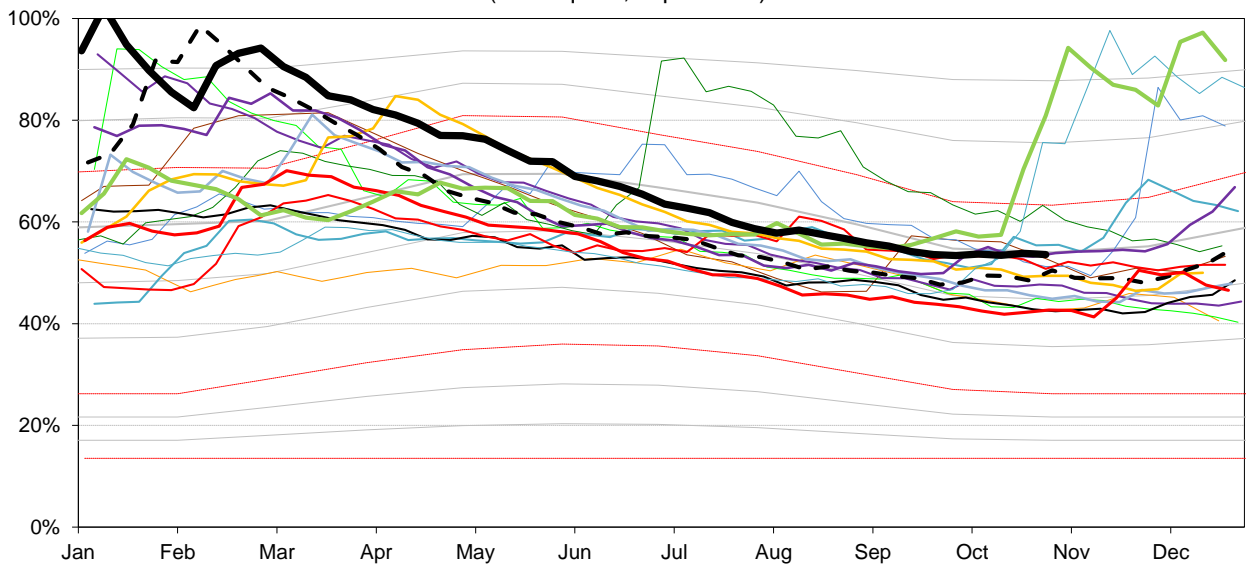
— 1995 — 1996 — 2000 — 2003 — 2013 — 2014 — 2015 — 2016
 — 2017 — 2018 — 2019 — 2020 - - 21 — 22 — 23 — 24

South Reservoir Group
(Sheffield, Barnsley)



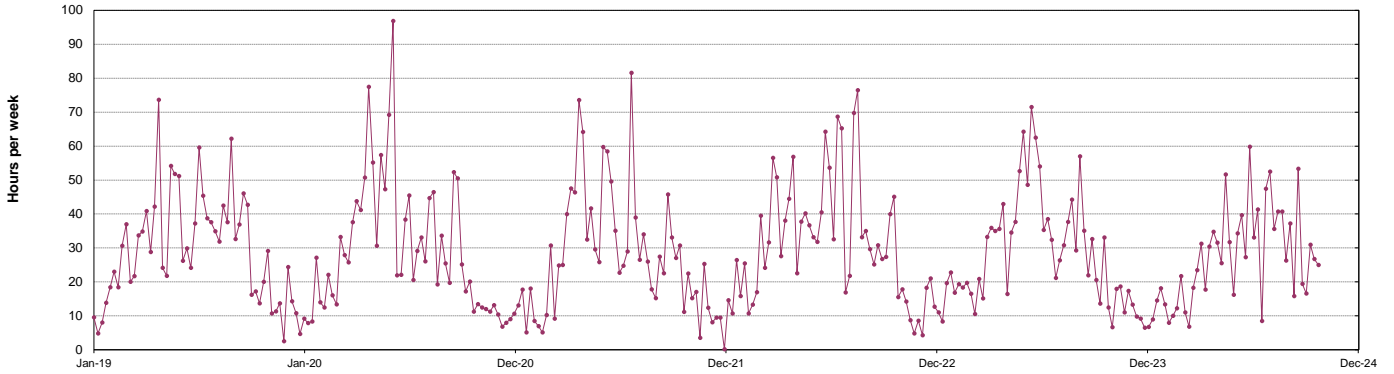
— 1995 — 1996 — 2000 — 2003 — 2013 — 2014 — 2015 — 2016
 — 2017 — 2018 — 2019 — 2020 - - 21 — 22 — 23 — 24

East Reservoir Group
(Hull Aquifer, Tophill Low)

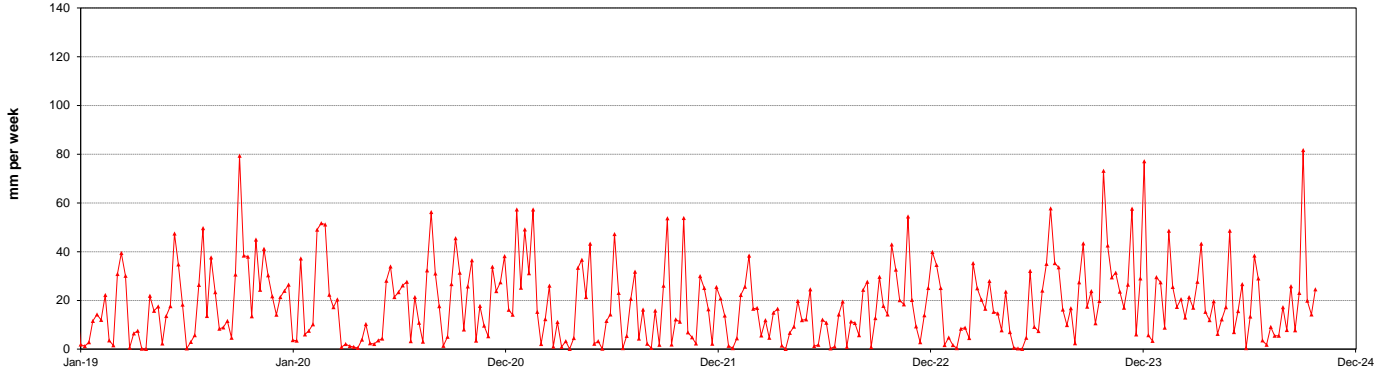


— 1995 — 1996 — 2000 — 2003 — 2013 — 2014 — 2015 — 2016
 — 2017 — 2018 — 2019 — 2020 - - 21 — 22 — 23 — 24

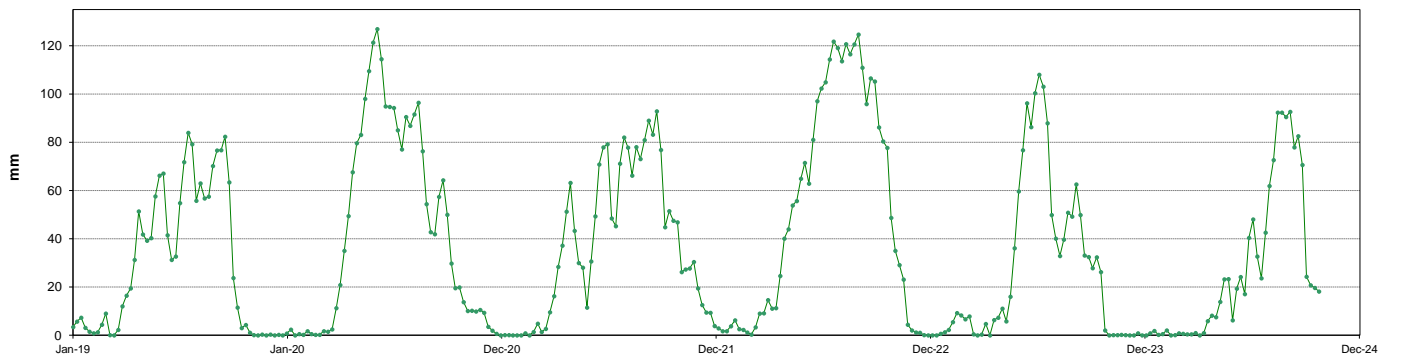
Average Sunshine



Average Rainfall



Soil Moisture Deficit



This page will normally be updated monthly (approx mid month).

This data may be subject to change following routine validation checks.

Where showing a negative value, this is normal at certain sources, due to the imports of water into that source being greater than the volumes abstracted.

Annual licences run from April to March.

Units in MI

Serial No	Source	Reporting Year	Run date			
			September	Year to date MI	Annual Limit	% of Annual Limit
02/27/023/332	Ainderby Steeple Boreholes	C	121	1129	1760	64%
03/28/083/010	Armthorpe Boreholes	C	206	2003	3319	60%
03/28/083/012	Austerfield Boreholes	C	392	3301	11615	28%
02/27/022/020	Aysgarth & Newbiggin Springs	C	14	133	341	39%
02/27/012/035	Baitings, Ryburn & Blackhouse reservoirs	C	287	2953	20457	14%
02/27/023/032	Bellerby Borehole and springs near Bellerby	F	72	146	1250	12%
02/27/022/209	Birk Gill & River Burn	C	212	2486	6400	39%
02/27/012/254	Boothwood Reservoir & associated catchwaters	C	330	2738	20457	13%
02/27/10/112	Boshaw Whams Reservoir	C	0	0	55	0%
03/28/083/105	Boston Park Boreholes	C	186	1684	3318	51%
02/27/024/305	Brayton Barff Boreholes	C	0	0	2250	0%
02/26/030/002	Bridlington	C	159	1439	2500	58%
02/27/005/031	Broomhead Reservoir	F	841	5876	12410	47%
02/26/030/004	Burton Agnes	C	76	682	1000	68%
02/27/018/080	Carlton Hanger Lane Boreholes	C	276	2160	3500	62%
02/27/018/079	Carlton Mill Lane Boreholes	C	159	1408	3800	37%
02/27/019/009	Carr Bottom Reservoir, Burley Woodhead	C	5	25	409	6%
02/27/023/340	Catterick Boreholes	F	189	1188	2920	41%
02/27/027/136	Cayton Carr Lane Boreholes	C	72	1085	3928	28%
02/27/027/163	Cayton Station Road Borehole	C	132	758	2646	29%
02/27/019/137	Chelker Reservoir	C	114	2159	5000	43%
02/27/023/031	Coalsgarth Springs	C	6	69	750	9%
02/27/011/064	Coine Valley Catchwaters	F	385	1967	5840	34%
02/26/032/126	Cottingham Well	C	497	5465	18184	30%
02/27/018/081	Cowick Boreholes	C	369	3319	5250	63%
02/27/023/046	Cranehow & Downholme Springs	C	0	0	318	0%
02/27/023/030	Crumma, Newsham & Gandale Springs	C	72	657	1364	48%
02/27/005/030	Dale Dyke & Agden Reservoirs	F	935	5280	12410	43%
02/27/012/261	Dean Head & Scammonden	F	190	969	3650	27%
02/27/19/121	Dib Spring, Hawkswick	C	0	0	27	0%
02/26/032/126	Dunswell Well	C	802	6619	16593	40%
NE/27/025/021	East Ness Boreholes	F	264	1684	5680	30%
02/26/031/087	Elmswell Wold Borehole	C	32	170	1273	13%
02/27/015/045	Emsbay Reservoir	C	45	1590	1846	86%
02/27/016/196	Esholt Sewage Treatment Works	C	0	0	88	0%
02/26/032/124	Etton Boreholes	C	166	1162	5100	23%
03/28/083/012	Finningley Boreholes	C	279	2703	6780	40%
02/27/022/328	Fossdale (High Shaw) Springs	C	6	74	227	32%
02/27/018/120	Goosehouse Boreholes	F	216	1829	3500	52%
02/27/012/043	Gorpley Reservoir	C	0	0	1823	0%
02/27/016/022	Graincliffe Reservoir	F	89	649	2728	24%
02/27/012/037	Green Withens Ringstone Res & catchwater	C	385	3762	20457	18%
02/27/019/051	Greenhow Tunnel (Nidd Aqueduct) Dale Head Intake	C	0	0	214	0%
02/27/019/052	Greenhow Tunnel (Nidd Aqueduct) No.2 Access Shaft	C	0	0	6819	0%
NE/27/019/005	Grimwith Reservoir to Nidd Aqueduct	F	127	681	3650	19%
02/26/030/003	Haithorpe Boreholes	C	343	3333	5000	67%
03/28/083/012	Hatfield Boreholes	C	182	1292	3319	39%
03/28/083/100	Hatfield Woodhouse Boreholes	C	0	0	3320	0%
02/27/029/010	Hazel Head Springs	C	36	426	1162	37%
02/27/012/041	Hebden, Luddenden & Hebble Valley Resrs	F	494	5984	15695	38%
02/27/018/077	Heck Boreholes	C	0	358	2489	14%
03/28/083/012	Highfield Lane Boreholes	C	229	2482	11615	21%
02/27/023/685	Hollin Hill Borehole	F	11	23	45	50%
02/27/010/063	Holmestyes & Digley Reservoirs	F	222	1468	5840	25%
02/27/22/024	Horsehouse Spring, leyburn	C	0	0	33	0%
02/27/027/002	Howe Hill Well	F	77	476	1014	47%
02/26/031/006	Hutton Cranswick	C	44	387	796	49%
02/27/005/012	Ingbirchworth Reservoir & Annat Royd Intake	C	67	906	3637	25%
02/27/005/202	Ingbirchworth South Borehole	F	4	25	132	19%
02/27/027/058	Irton	C	439	4035	8215	49%
02/27/21/015	John O'Gaunts and Beaverdyke Reservoirs	C	0	0	1909	0%
02/27/014/010	Keighley Moor Reservoir	F	33	269	6951	4%
02/27/025/128	Keld Head Boreholes	C	173	1487	3319	45%
02/26/032/126	Keldgate Boreholes	C	0	984	5819	17%
02/26/031/002	Kilham	C	1	94	1818	5%
02/27/005/032	Langsett Reservoir	F	759	6246	17155	36%
02/27/022/210	Leighton Reservoir & Spruce Gill stream intake	C	508	5657	13184	43%
03/28/083/107	Littleworth Borehole	C	0	0	1659	0%
02/27/028/270	Loftsome Bridge ASR Borehole No.1	C	0	0	750	0%
02/27/014/009	Lower Laithe Reservoir	F	147	1163	6951	17%
02/27/005/011	Midhope Reservoir & Knoll Brook Intake	F	148	1707	17155	10%
02/26/034/006	North Newbald	C	0	0	1137	0%
03/28/083/012	Nutwell Boreholes	C	218	2143	4983	43%
02/27/019/006	Panorama, Hilltop & Old Reservoirs & Springs	C	24	178	1000	18%
02/27/018/078	Pollington Boreholes	C	187	1773	5000	35%
02/27/014/058	Ponden Reservoir	F	119	712	6951	10%
02/27/016/023	Reva Reservoir, Hawkesworth	C	-13	924	1364	68%
02/27/005/029	Rivelin and Redmires Reservoirs	F	188	1186	8030	15%
02/27/028/017	River Derwent at Elvington	F	4692	26343	75000	35%
02/27/028/083	River Derwent at Loftsome Bridge	F	1948	12433	30400	41%
02/27/029/012	River Esk	C	274	2422	7823	31%
02/26/031/047	River Hull & West Beck	C	1315	10972	25000	44%
02/26/032/194	River Hull for Sewer Cleaning	C	0	0	91	0%
02/27/024/078	River Ouse at Acomb	F	803	4890	35000	14%

02/27/024/158	River Ouse at Moor Monkton	C	3099	22384	73000	31%
02/27/022/214	River Ure at Kilgram Bridge	C	437	2566	15000	17%
02/27/020/196	River Wharfe at Arthington	F	279	317	19009	2%
02/27/019/129	River Wharfe at Lobwood	F	1955	12151	27392	44%
03/28/083/012	Rossington Bridge Boreholes	C	0	0	5172	0%
02/27/022/027	Roundhill and Lumley Moor Reservoirs	C	0	5	3500	0%
02/27/005/013	Royd Moor Reservoir & Intakes	C	69	858	2955	29%
02/27/021/016	Scargill Reservoir	C	101	778	1932	40%
02/27/021/092	Scarhouse & Angram Resvrs with tunnel & catchwater	C	2995	28486	38164	75%
02/27/15/149	Silsden Beck, Stilling-Basin at foot of Silsden Reservoir Embankment	C	0	0	10	0%
02/26/032/126	Springhead Well	C	508	7366	13638	54%
02/27/022/021	Stalling Busk & Marsett Springs	C	0	0	33	0%
02/27/022/208	Stock Beck, Carlesmoor Beck & River Laver	C	191	1013	3500	29%
02/27/023/684	Stubbing Nook Borehole	F	0	13	135	10%
03/28/083/012	Thornham Boreholes	C	292	2676	6213	43%
02/27/016/160	Thornton Moor & Stubden Reservoirs	C	245	999	6214	16%
02/27/012/038	Turvin Clough	C	84	157	4014	4%
02/27/019/054	Upper & Lower Barden Reservoirs	C	422	3935	14223	28%
02/27/020/088	Washburn Valley Reservoirs	C	1537	23632	43800	54%
02/27/015/041	Watersheddes Reservoir	F	144	592	6951	9%
02/27/016/021	Weecher Reservoir	C	1	93	909	10%
02/27/011/065	Wessenden Valley, Blackmoorfoot & Deerhill	F	553	3958	12410	32%
02/27/023/034	West Stonesdale (Garland Hill) Springs	C	0	0	282	0%
02/27/015/042	Whinney Gill & Jenny Gill Reservoirs	C	0	88	377	23%
02/27/005/026	Winscar, U & L Windleden, Harden & Snailsden	F	793	4540	10140	45%
02/27/012/036	Withens Clough Resr & Catchwater	C	224	1567	3319	47%
02/27/010/011	Yateholme, Riding Wood, Ramsden & Brownhill	F	244	1459	6820	21%

Licences with Aggregated Annual Quantities	Reporting Year	September	Year to date MI	Annual Limit	% of Annual Limit
Baitings, Ryburn, Boothwood, Green Withens	C	1002	9454	20457	46%
Langsett, Midhope	F	906	7953	17155	46%
Worth Valley	F	443	2736	6951	39%
River Derwent (Elvington, Loftsome)	F	6640	38776	94841	41%
Cayton, Irton	C	643	5878	10700	55%
Selby Boreholes	C/F	1207	10847	25283	43%
Doncaster Wellfield	C	1985	18283	30295	60%
Doncaster Sub Group	C	1593	14597	26049	56%
Austerfield & Highfield Lane	C	621	5783	9956	58%
Hull Groundwater Sources	C	1806	20434	32850	62%

Third Party Agreements (Calendar Year)

Source	Reporting Year	September	Year to date MI	Annual Limit	% of Annual Limit
CRT, Hudds Narrow Canal	C	204	1026	1273	81%
Severn Trent Ladybower Reservoir	C	1527	15920	21550	74%

Reading date: 01-Oct-24

	Reporting Year	Year to date MI	Annual Limit	% of Annual Limit
Winscar To Langsett Transfer Usage	F	957	2482	39%