

WATER SITUATION REPORT

1. Rainfall

The Yorkshire Region Has Received 104.9% of LTA for June

Please note this includes rainfall from the last week of May (no month end readings). Currently 84% of LTA based on EA TBR data.

2. Reservoirs (surface water supply reservoirs not including Hull)

Over the Past Week Our Reservoir Stocks Have Decreased By -2.48% To 55.8%

3. Rivers

Some of Our Rivers are Below Critical Level

4. Demand

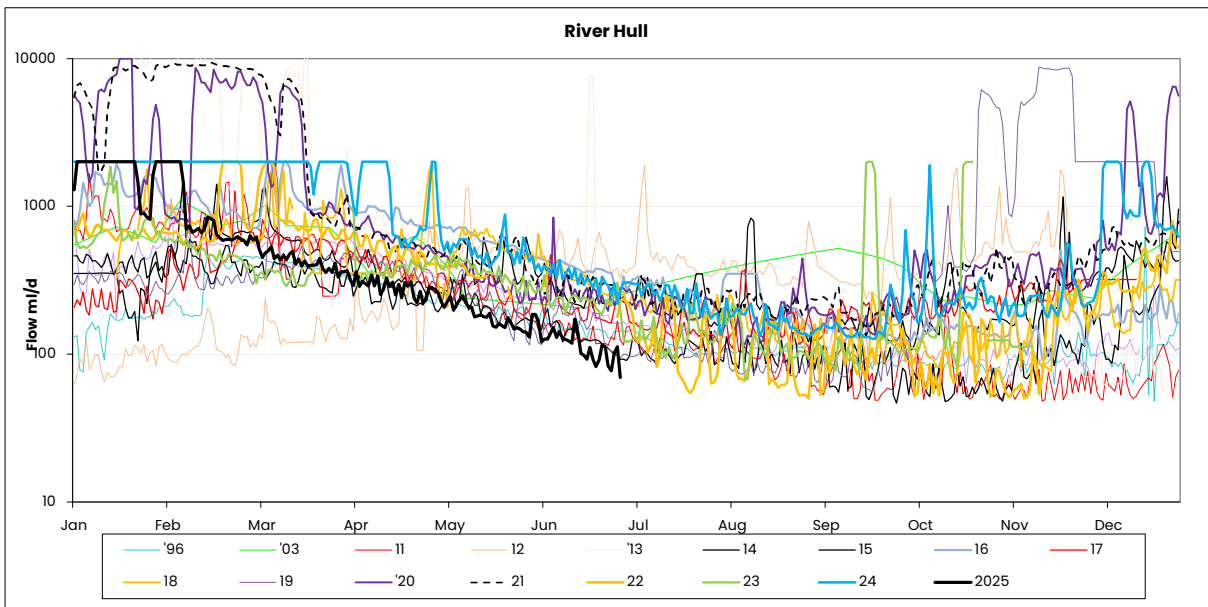
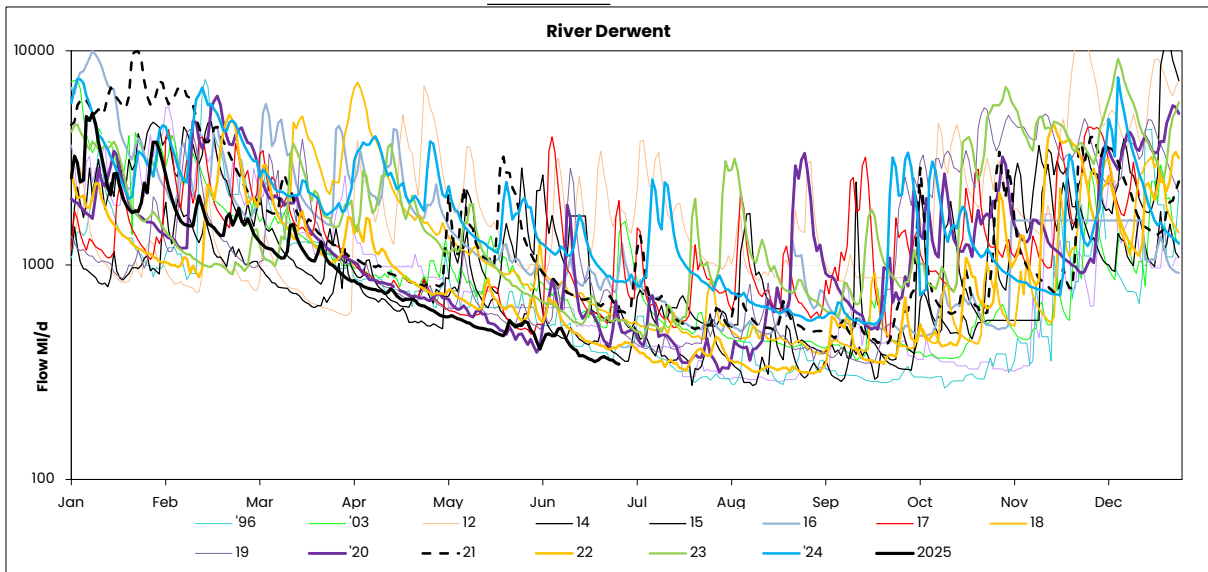
Regional Demand = 1380.4 Ml/d (including York)

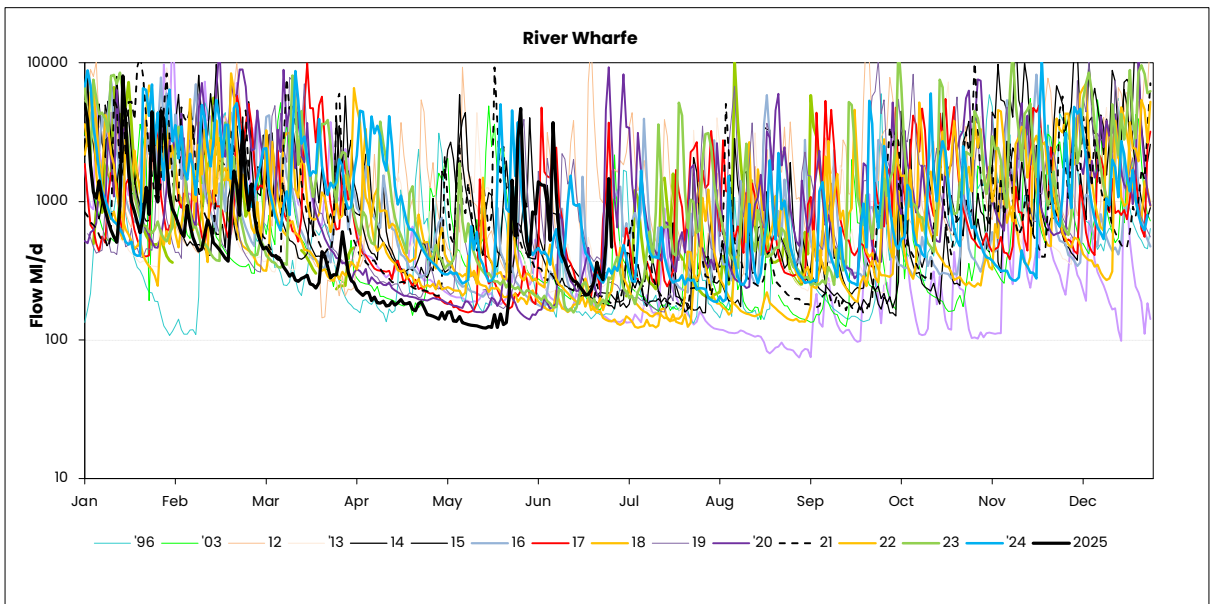
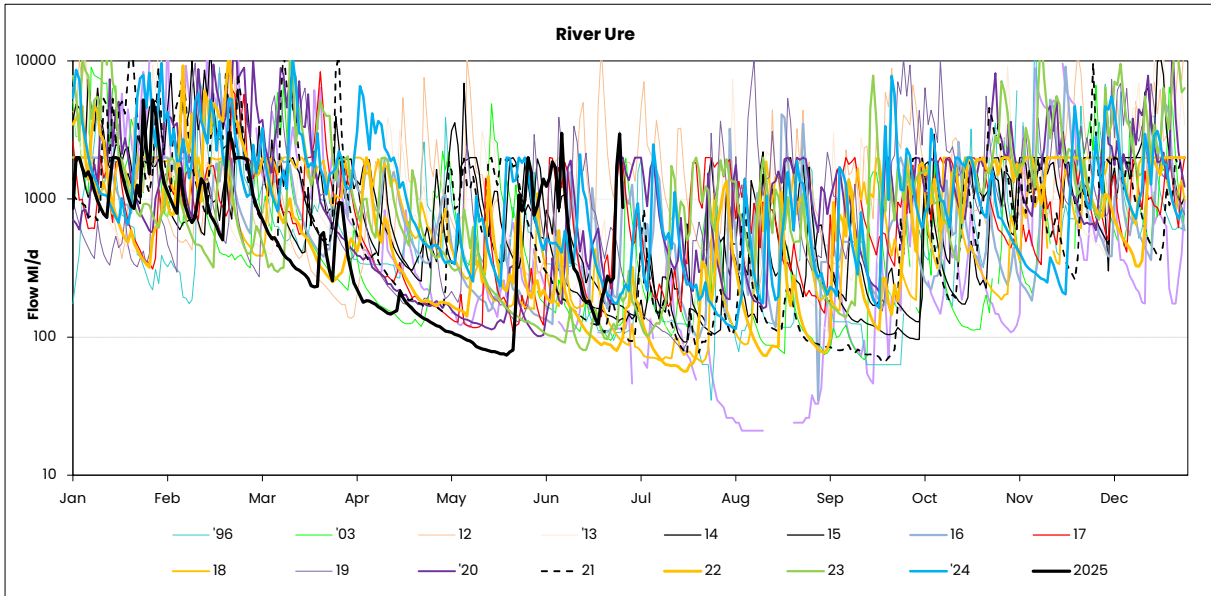
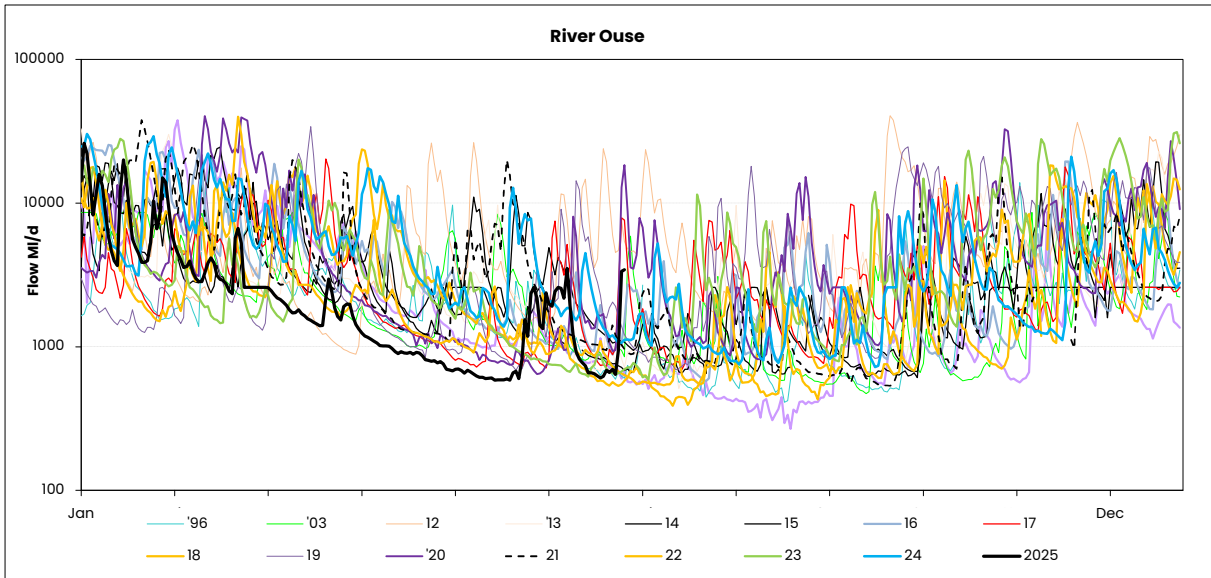
5. Comments

RIVER FLOWS

30 June 2025

	Mon 30-Jun	Mon 23-Jun	Mon 16-Jun	Mon 09-Jun	Critical flow bands
Derwent	345	359	400	469	305
Hull (using gauged (residual flows) only from 20	70	91	139	130	45 / 159 / 227
Ouse	3432	622	775	2552	400 / 650 / 1000
Ure	865	184	253	860	50 / 163 / 300
Wharfe	ⓘ 469	⊗ 230	ⓘ 286	ⓘ 523	252 / 389 / 488 / 580





Yorkshire Region (Met Office)				England/Wales	
Month	mm	LTA	LTA(%)	mm	LTA(%)
November	51	89	57%	84	82%
December	108	90	120%	97	93%
January	82	80	103%	100	108%
February	37	70	53%	57	78%
March	26	60	43%	16	25%
April	11	58	19%	34	56%
May	36	55	65%	35	58%

SOURCE OF DATA : Hydrological Summary of Gt Britain, Institute of Hydrology

Yorkshire Water Services Data			
Rainfall Station	Total June	LTA June	LTA % June
Tophill	NDA	50	0%
Cottingham	30.3	52	58%
Bridlington	23.2	50	46%
Roundhill	40.3	67	60%
Fewston	41.5	62	67%
Osmotherley	26.8	63	43%
Scar House	83.6	80	105%
Watersheddes	160.9	90	179%
Gt Walden Edge	144.9	91	159%
Walshaw Dean	115.3	90	128%
Blackmoorfoot	93.6	75	125%
Ramsden	112.2	92	122%
Redmires	73.5	78	94%
Langsett	58.5	68	86%
YORKSHIRE REGION	77.3	73.7	105%
EAST REGION	26.8	54.3	49%
PENNINE (WEST)	92.4	79.3	117%

NDA= No data available/lack of readings, impacts % LTA for the month
SOURCE OF DATA : YWS RAIN GAUGES- weekly, so monthly data may include previous month or miss start of month

As the rainfall data is read weekly, the June rainfall total includes some rainfall from May. The data below shows EA rainfall data for June only but not for the same stations as shown above (using the closest EA TBR where possible).

Using EA BR sites:	June Total Rainfall mm	June LTA rainfall mm	%age LTA June
YWS	62.3	74.0	84%
East	25.7	52.5	49%
West	76.0	80.3	95%

MAJOR SOURCE OUTPUTS

30 June 2025

26/06/2025

	Operational Maxima & Design Yields (Ml/d)	WRAP Targets Week Beginning - 26/06/2025	Daily Average Previous 5 Days Starting - 26/06/2025	WRAP Targets Week Starting - 19/06/2025	Daily Average Week Starting - 19/06/2025
WATER TREATMENT WORKS					
CENTRAL					
ECCUP NO 1 WTW	100	53.0	56	56	54
ECCUP NO 2 WTW	60	44.0	41	44	46
HEADINGLEY	95	63.0	79	63	72
HARLOW HILL	41.5	27.0	26	27	26
THORNTON STEWARD	22.5	19.7	23	20	23
EAST					
EAST NESS	17	8.0	6	8	10
IRTON	23.5	13.0	15	13	15
RUSWARP	12	7.0	8	7	8
TOPHILL LOW	68	40.0	44	40	41
KELDGATE	90	60.0	83	60	76
NORTH WEST					
CHELLOW	175	148.0	165	148	158
GRAINCLIFFE	60	38.0	33	38	40
SLADEN VALLEY	12	8.0	8	8	8
OLDFIELD	10.1	6.0	4	6	5
EMBSAY	25	17.0	21	17	19
SOUTH					
INGBIRCHWORTH	20	20.0	20	20	12
LANGSETT	56	36.0	47	36	49
(TOTAL)	75	56	67	56	61
EWDEN	40	35.0	36	35	37
LOXLEY	40	26.0	38	26	34
(TOTAL)	80	61	74	61	71
RIVELIN	75	64.0	54	64	55
SOUTH WEST					
ALBERT	55	51.0	44	51	45
FIXBY	30	21.0	20	21	19
KIRKHAMGATE	30	17.0	21	17	17
(TOTAL)	115	89	85	89	81
BLACKMOORFOOT	23	20.0	20	20	20
LONGWOOD	32	27.0	20	27	22
(TOTAL)	55	47	40	47	42
HOLMBRIDGE	29	19.0	19	19	19
GRID					
ELVINGTON	260	159	195	159	190
LOFTSOME BRIDGE	110	75	34	75	31

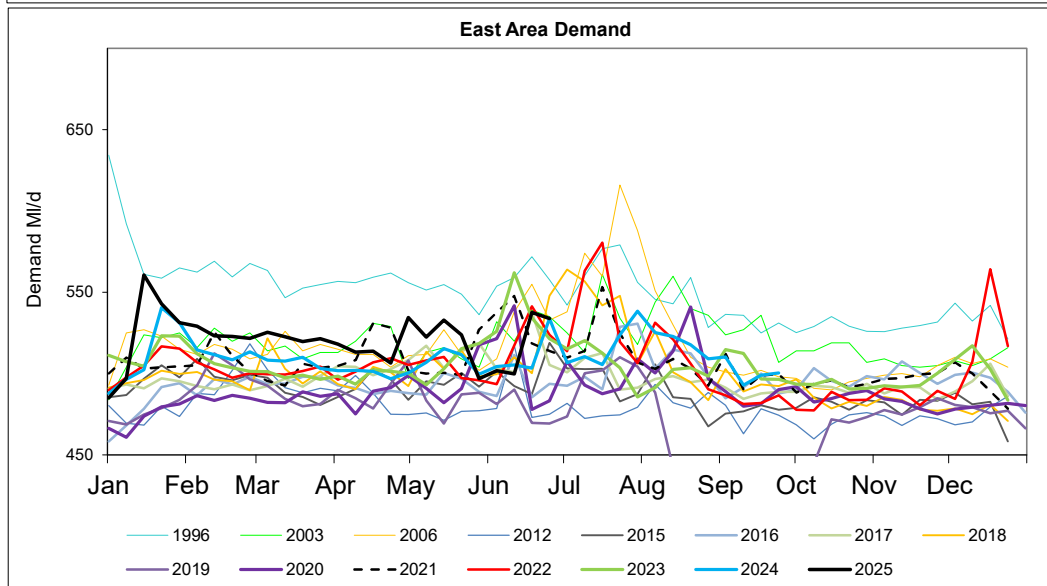
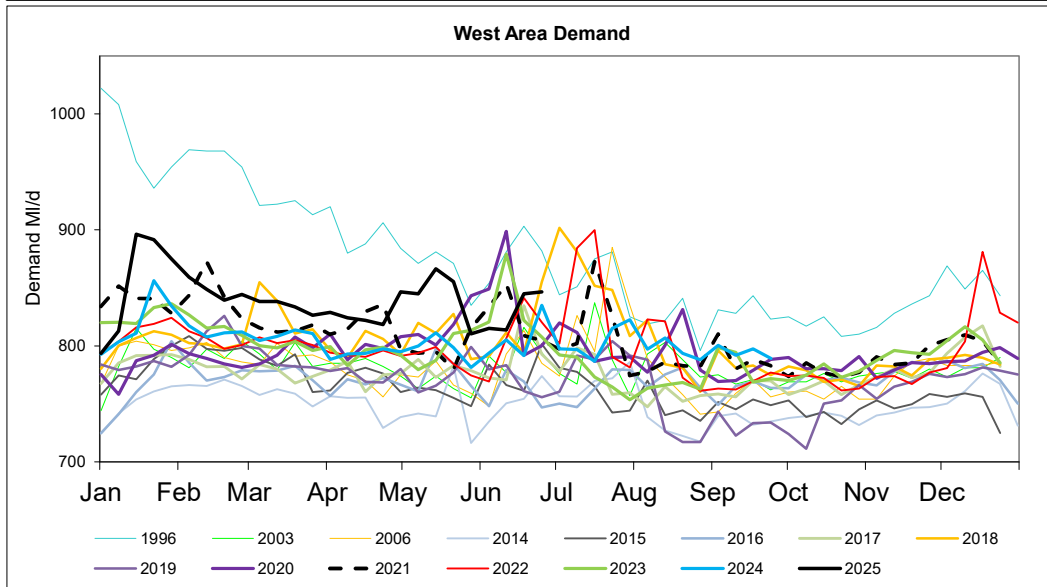
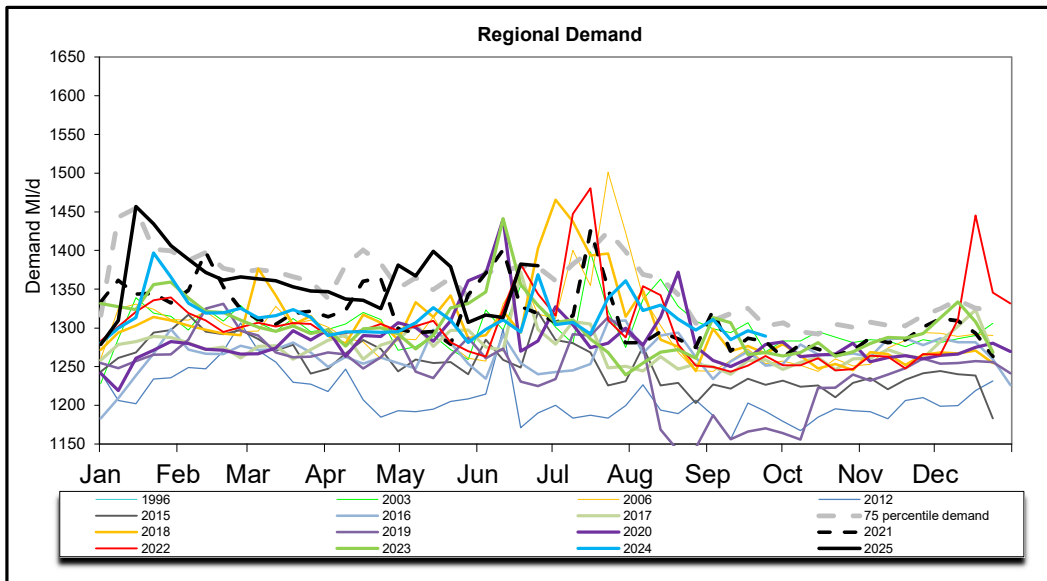
Daily Average Demand MI/d

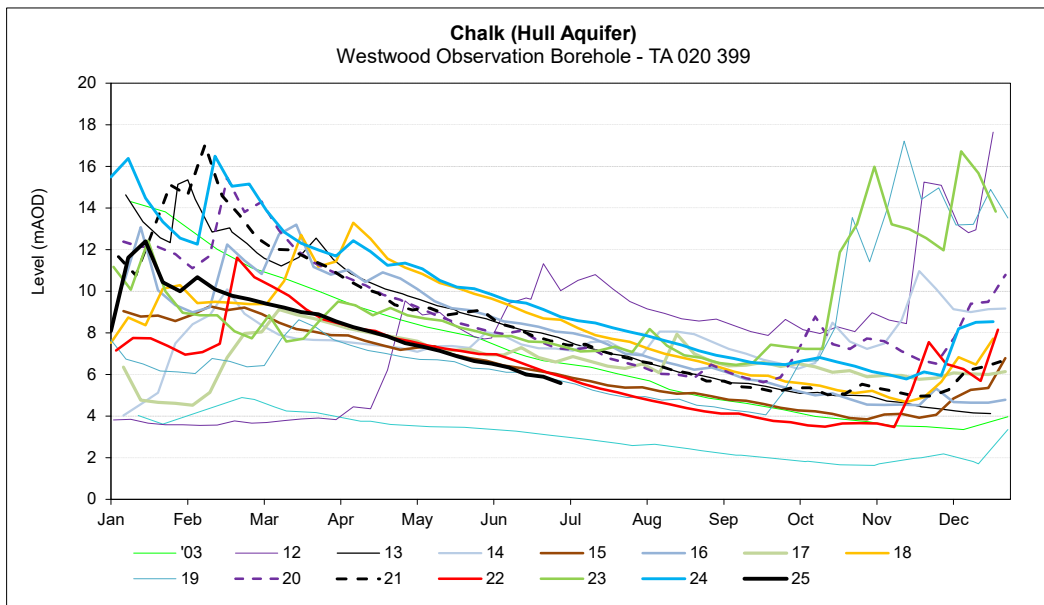
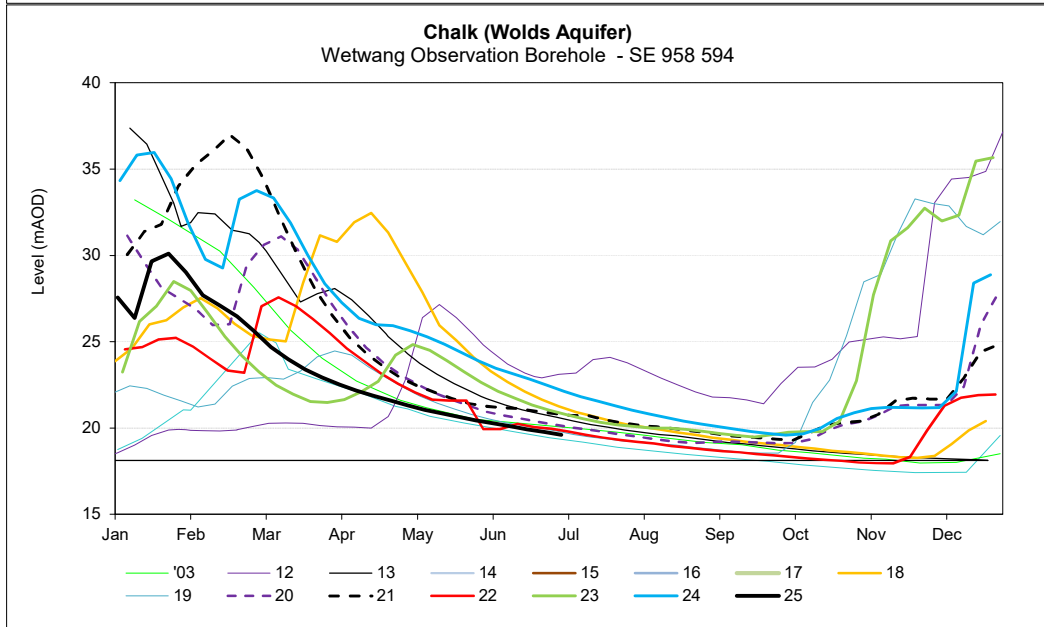
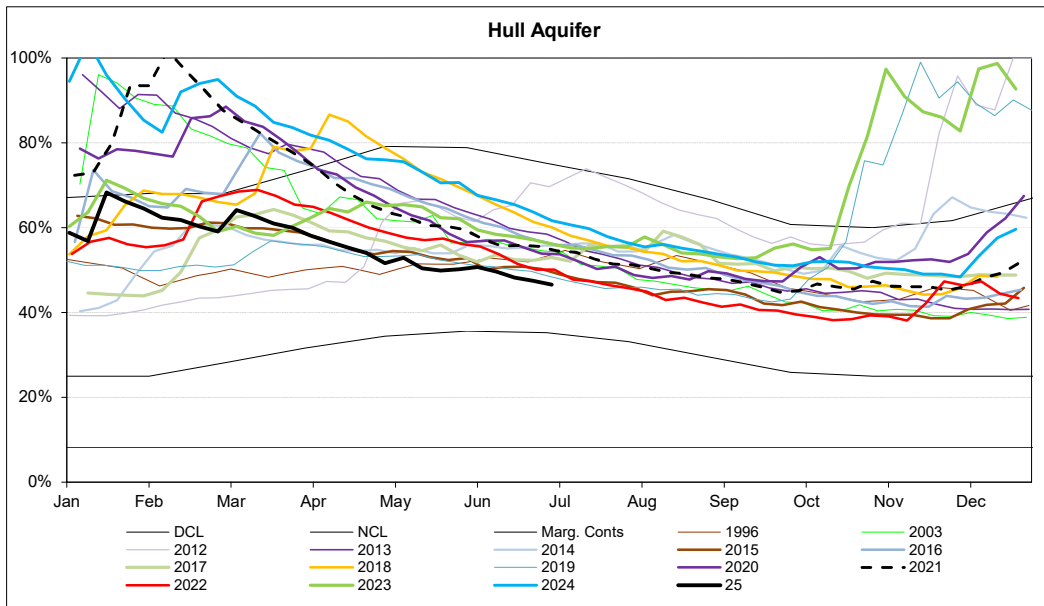
Week Ending Wednesday	L E A S E D S	W A M K O E + R F L I E Y L D	S E L B Y	H A R R O G A T E	H U L L	M A L L T O N	S H E F F / B L Y	D O N C A F S T E R	B R A D F O R D	C A L D E R	S K I P T O N	Y O R K A R E A	R E G I O N
28/05/2025	163	77	42	77	155	56	275	87	143	148	38	45	1307
04/06/2025	164	78	43	76	161	56	279	83	143	151	38	45	1317
11/06/2025	162	78	42	76	160	56	278	82	144	151	39	46	1314
18/06/2025	167	80	46	82	181	59	289	91	148	153	38	49	1383
25/06/2025	168	79	45	83	177	60	289	87	156	152	39	46	1380

MONTHLY DEMANDS FROM WIS REPORT

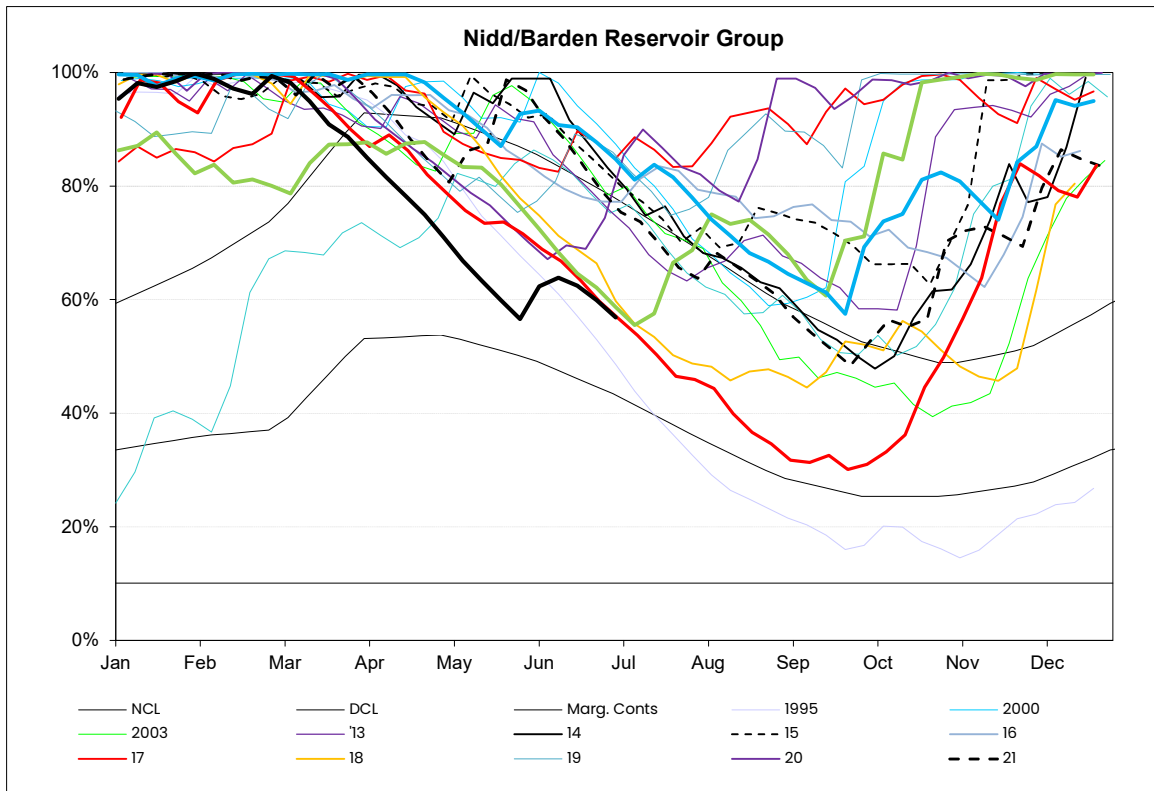
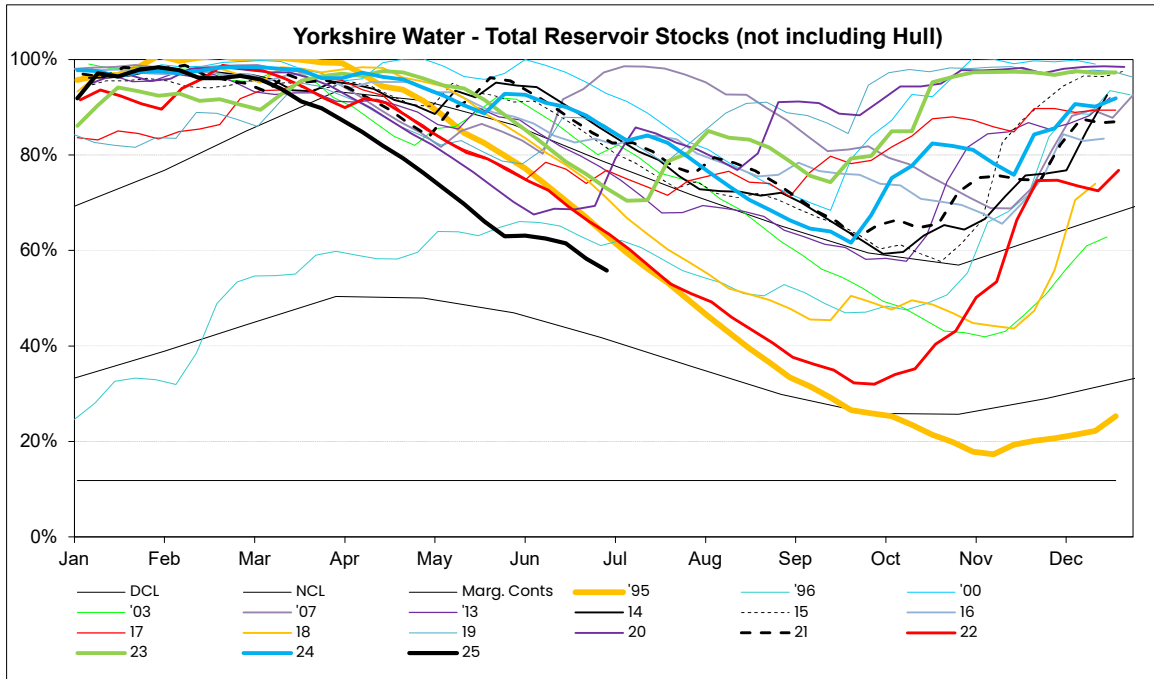
Apr-25	163	71	41	74	166	57	288	69	149	151	39	48	1316
May-25	166	72	42	76	160	58	293	79	150	154	39	48	1335

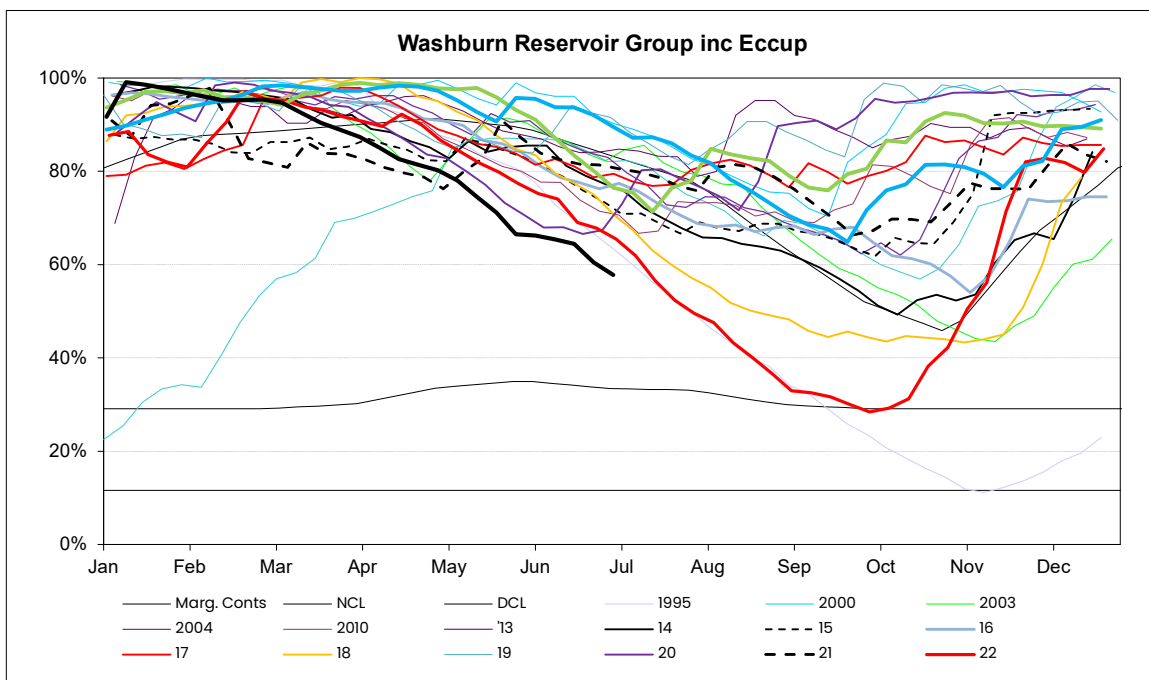
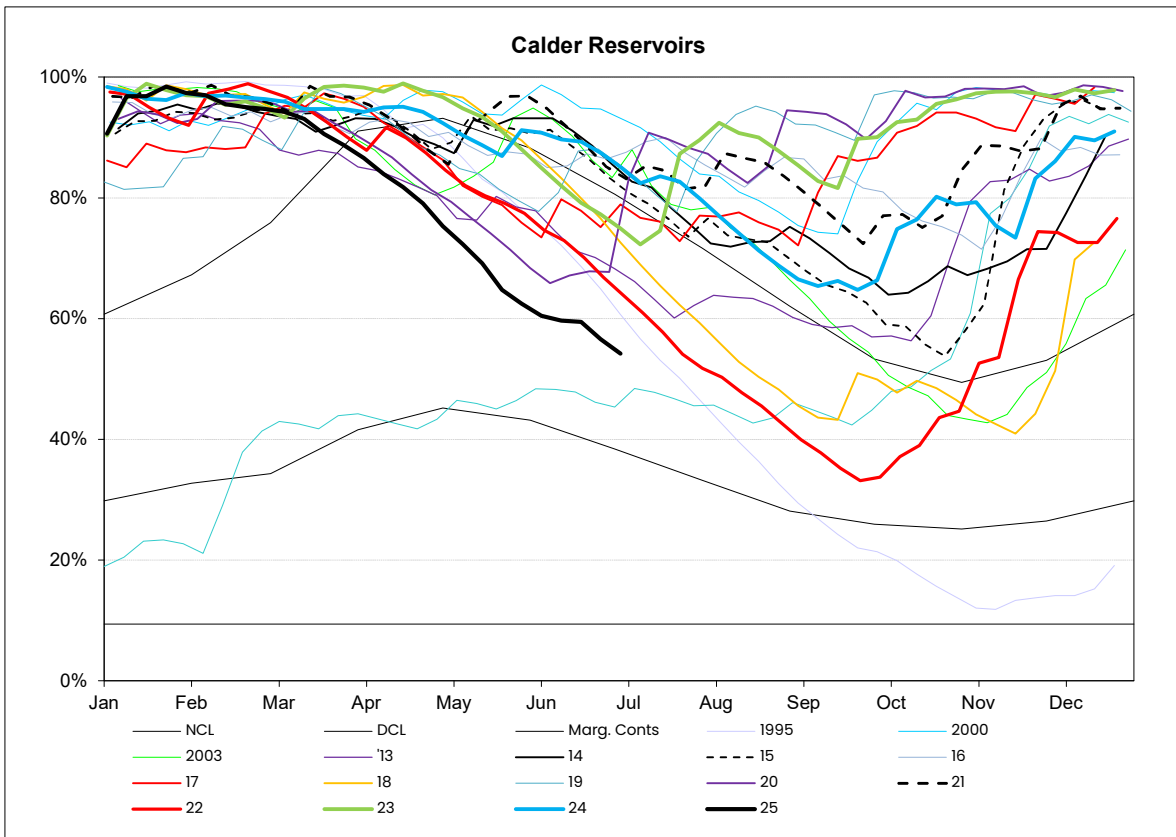
NB Current month demands include some estimates for minor sources and are not exactly comparable with previous months' figures

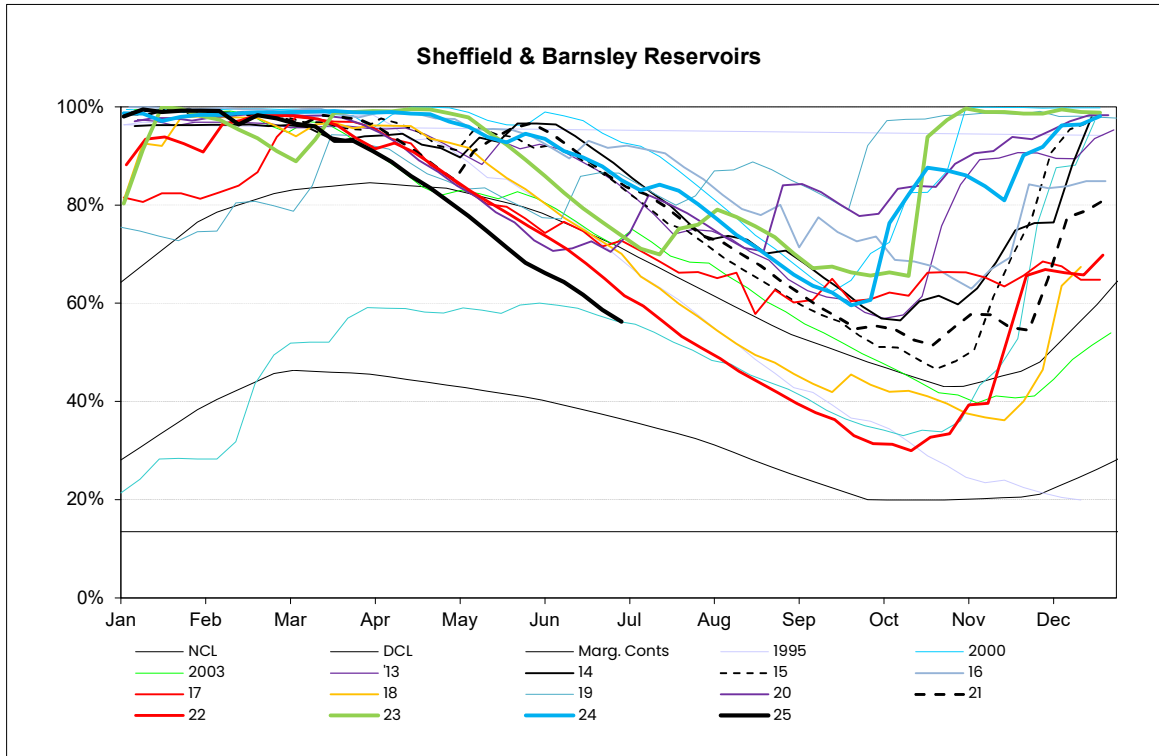




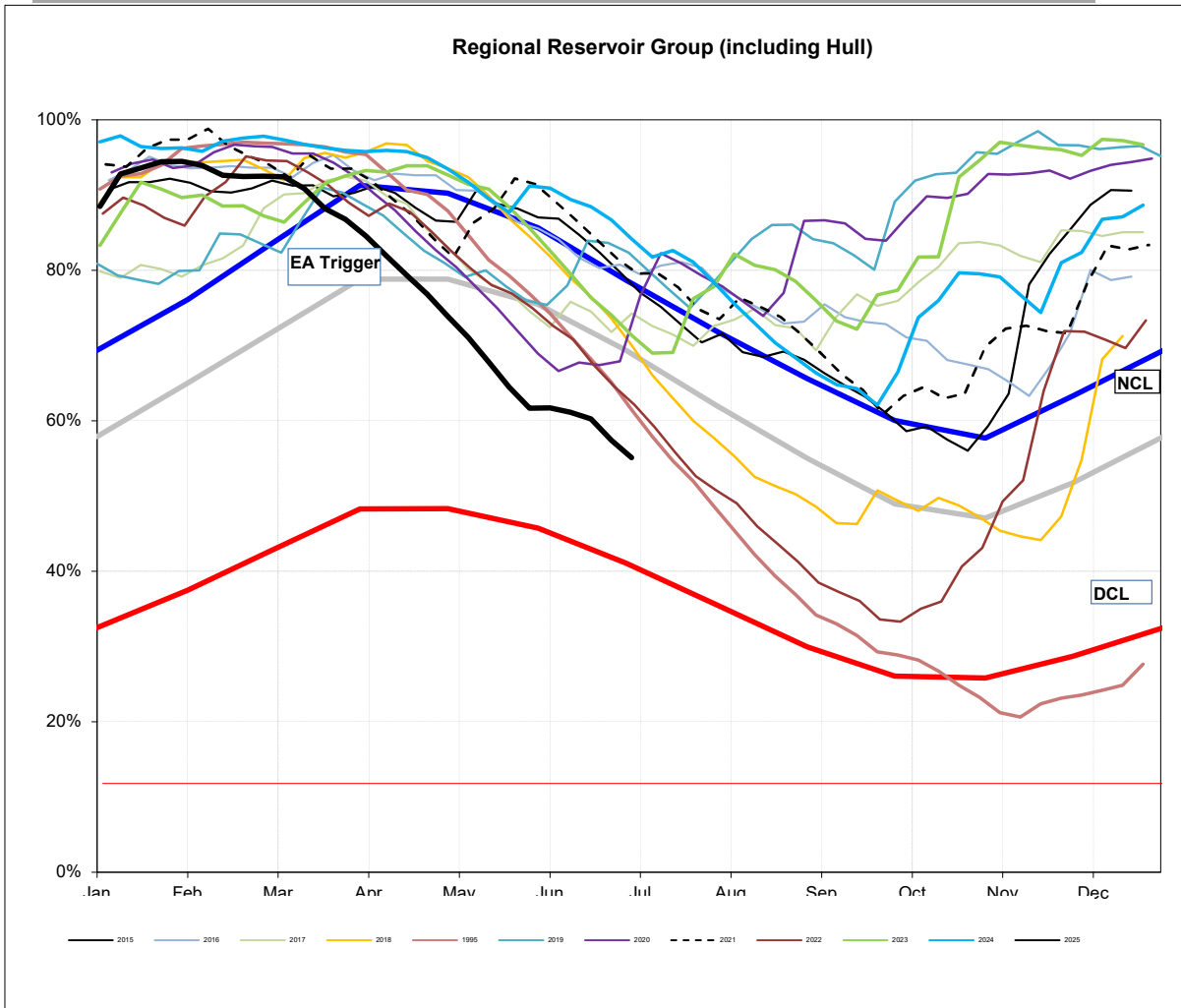
RESERVOIR STOCKS	30/06/2025		% Change	Planned Reservoir Safety Work	Required Drawdown & Duration	
Reservoir Group	% Stocks @	% Change	last week	Reason for Drawdown		
Calderdale (excl Withens Clough)	49.8%	-2.6%	-3.0%			
Boothwood/Ryburn (incl WC)	50.3%	-2.5%	-4.7%			
(Gorpley)	57.2%	-1.7%	-1.7%			
Huddersfield	61.4%	-2.2%	-1.0%			
Brownhill/Digley	53.9%	-2.1%	-3.1%			
Walshaw Dean Lower	27.6%	-4.2%	-4.5%	OSA Repairs	Apr 25 - May 25	86.0%
Widdop	20.7%	0.0%	-0.3%	Increase Drawdown Capacity	June 25 - Aug 25	10.0%
Brownhill	56.9%	-2.8%	-3.1%	Leakage Investigation	Apr 25 - Sept 25	51.0%
Longwood Comp IRE	N/A	N/A	N/A	Spillway Grouting	TBC	40.0%
Longwood ESR	N/A	N/A	N/A	Pipework Painting	TBC	76.0%
Calder Area Total	54.2%	-2.4%	-2.9%			
Nidd/Barden/Chelker	56.9%	-3.0%	-2.5%			
Grimwith	53.8%	-2.6%	-3.6%			
Worth Valley	59.2%	-1.8%	-2.0%			
March Ghyll	75.7%	-1.1%	-1.7%	Embankment Stability Works	Jan 23 - Dec 24	86.0%
Ponden	67.4%	-1.5%	-2.8%	Repair Ground Anchor	Aug 24 - Mar 25	87.6%
Chelker	93.3%	-0.2%	11.0%	Pointing	Nov 24 - May 25	34.0%
Chelker	93.3%	-0.2%	11.0%	Pointing	Nov 24 - May 25	78.0%
North West Area Total	56.5%	-2.5%	-2.9%			
Washburn/Eccup Resrs.	57.8%	-2.6%	-4.0%			
Thornton Steward	87.0%	-0.3%	-5.5%			
Leighton/Roundhill	54.1%	-2.2%	-3.0%			
Haverah Park	70.1%	-0.9%	-3.8%			
Swinsty	44.1%	-0.9%	-2.3%	Outlet Channel Repairs	Dates tbc	93.0%
Thruscross	61.9%	-5.3%	-5.7%	Bridge Repairs	Dates tbc	TBC
Cod Beck	100.0%	0.0%	0.0%	Inspection of Overflow and Upstream Face	Aug 24 - Mar 25	83.0%
Randy Mere	N/A	N/A	N/A	Upstream Face Repairs	TBC	17.0%
North Area Total	58.0%	-2.4%	-4.1%			
Don Valley & Winscar	65.0%	-2.4%	-2.2%			
Rivelin Valley	87.0%	0.3%	-1.8%			
Little Don	47.2%	-2.1%	-3.3%			
Ewden Valley	43.7%	-4.2%	-4.6%			
Loxley Valley	53.8%	-3.3%	-3.9%			
Redmires	44.3%	-1.3%	-3.2%			
Redmires Upper	40.7%	0.7%	-0.7%	Damage to Overflow Channel	Nov 23 - Oct 25	98.0%
Redmires Middle	43.6%	-3.0%	-9.8%	Damage to Overflow Channel	Nov 23 - Oct 25	89.0%
Redmires Middle	43.6%	-3.0%	-9.8%	Issues with Sheet Piles	Feb 25 - Oct 25	95.0%
Strines	55.1%	-3.1%	-5.2%	Overflow Investigation	Apr 25 -Sept 25	58.0%
South Area Total	51.7%	-2.2%	-3.3%			
Tophill Low	84.7%	-3.5%	2.8%			
Hull Aquifer	46.6%	-0.9%	-0.7%			
East Area Total	49.7%	-1.2%	-0.4%			
Regional Total (DCP) (inc East Area)	55.1%	-2.3%	-2.8%			
YORKSHIRE TOTAL (Supply) (not inc East Area)	55.8%	-2.5%	-3.2%			



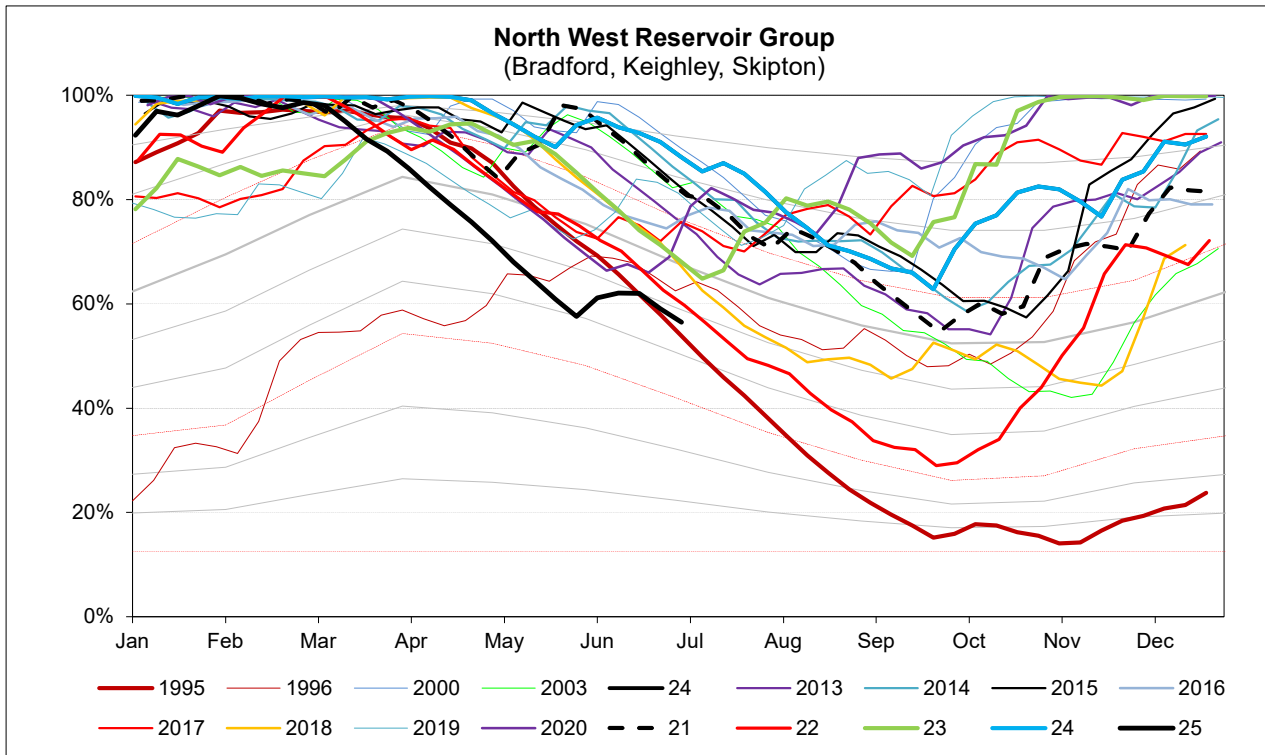
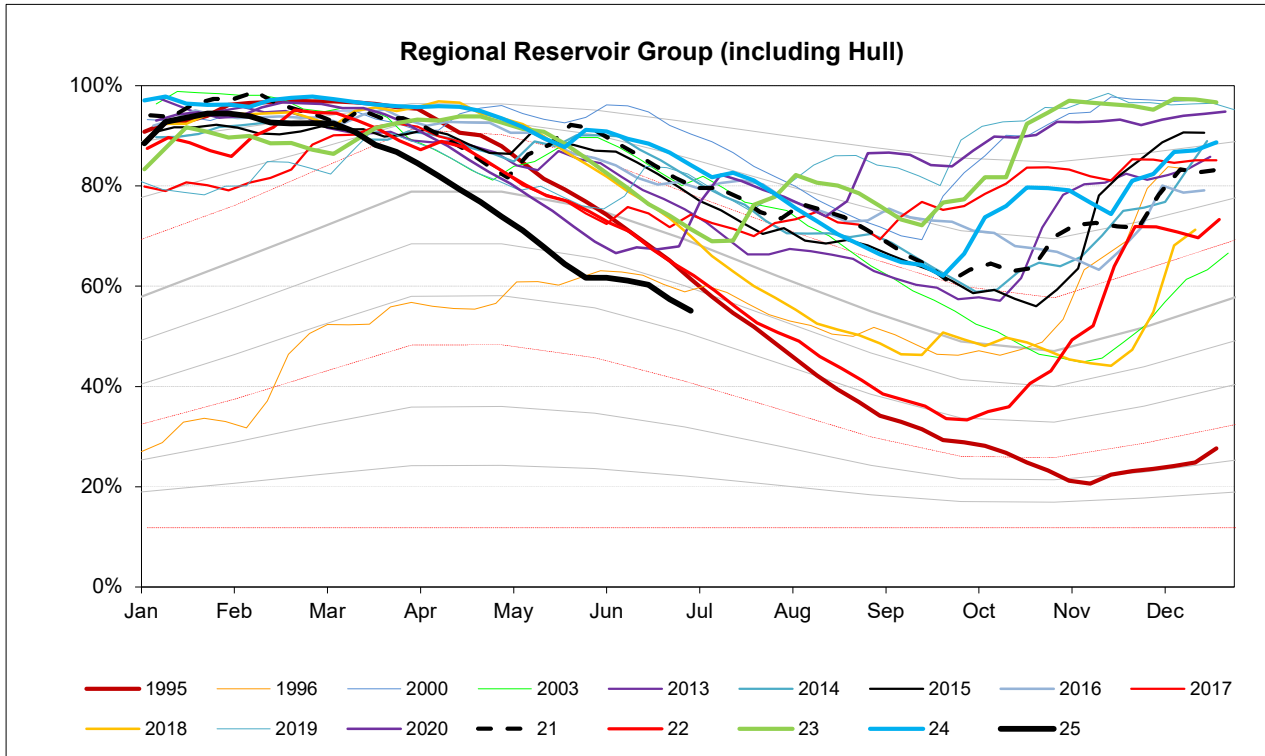




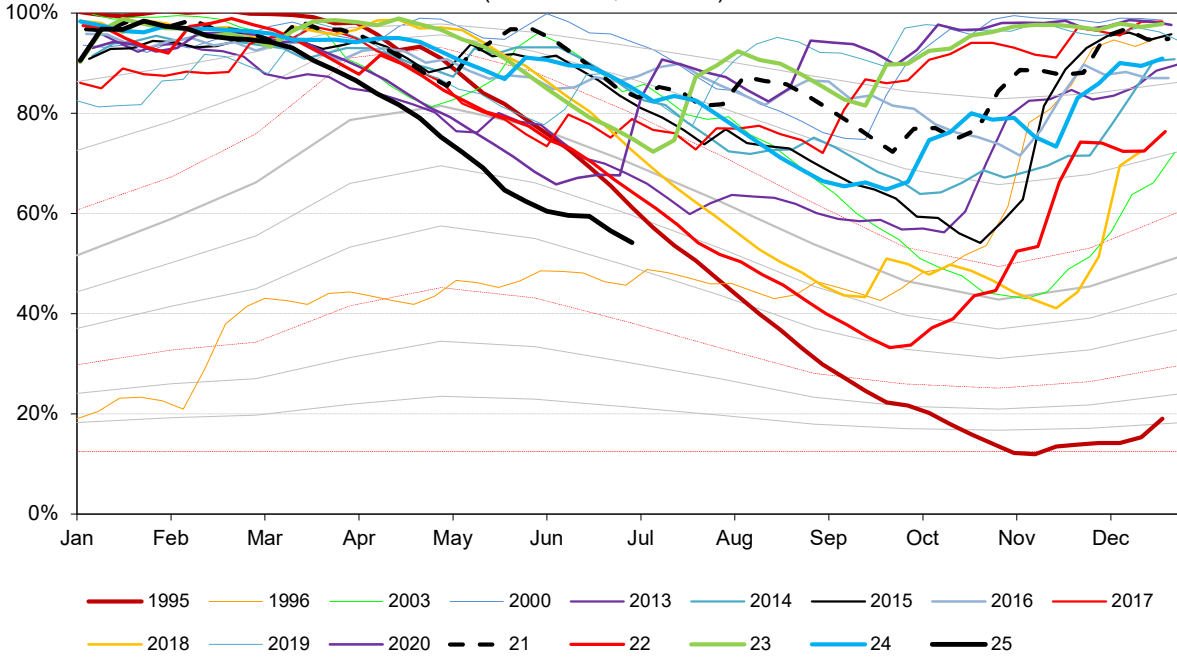
EA Stocks Report		30/06/2025					
	MI	%	% change		MI	%	% change
South West Area Supply Reservoirs				South Area Supply Reservoirs			
Calderdale Group	5551	49.8%	-2.6%	Don Valley	1575	75.7%	-1.2%
Huddersfield Group	8665	61.4%	-2.3%	Little Don	3476	47.2%	-2.1%
Brownhill/Digley excl Holme	3019	53.8%	-2.0%	Ewden Valley	2160	43.7%	-4.2%
Boothwood/Ryburn	6034	51.6%	-2.4%	Loxley Valley	3700	53.8%	-3.3%
				Rivelin	710	87.0%	0.3%
South West Reservoir Group	23860	54.2%	-2.4%	Redmires	1230	44.3%	-1.3%
Bradford Area Supply Reservoirs				South Reservoir Group			
Gouthwaite	3402	58.5%	-3.1%	Winscar Group	5876	62.5%	-2.7%
Grimwith	11705	53.8%	-2.6%				
Nidd/Barden/Chelker	10913	56.9%	-3.0%	Compensation Reservoirs			
Rombalds/Thornton Group	1425	63.9%	1.3%	Scout Dike	335	48.3%	-3.2%
Skipton Area Supply Reservoirs				Underbank	2053	71.6%	-2.3%
Embsay	678	93.8%	-2.7%	Morehall	1218	56.0%	-2.4%
Worth Valley Group	1961	59.2%	-1.8%	Damflask	3627	71.0%	-1.3%
North West Reservoir Group	26683	56.5%	-2.5%	North Area Supply Reservoirs			
Compensation inc Silsden				Washburn	13514	57.8%	-2.6%
Gouthwaite	3402	58.5%	-3.1%	Eccup	4743	67.7%	-1.4%
March Ghyll & Elslack Reservoirs excluded for consistency with stocks predictions in WRAPSIM				Leighton/Roundhill	4003	54.1%	-2.2%
				Haverah Park	703	70.1%	-0.9%
				Lumley Moor	251	65.8%	-1.3%
				Thornton Steward	825	87.0%	-0.3%
East Area Supply Reservoirs							
Tophill Low	1425	84.7%	-3.5%	North Reservoir Group	19297	58.0%	-2.4%
Hull Aquifer	8846	46.6%	-0.9%				
				Lindley Wood Compensat	443	15.2%	-4.5%
East Reservoir Group	10271	49.7%	-1.2%	Regional Reservoir Group	98837	55.1%	-2.3%
				(sum of South West, North West, East, South, North & Winscar Rese			



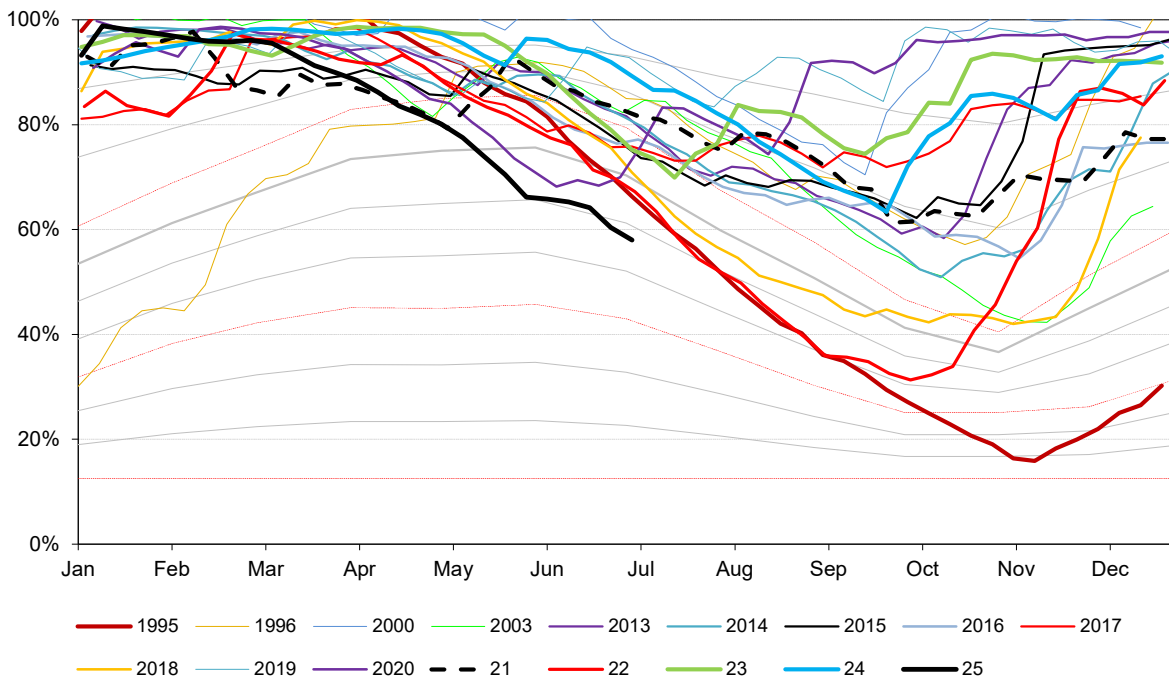
Triggers	
EA early warning (CL4)	Water resources to advise EA on production
Hosepipe Restrictions	When projected falling stocks fall below DCL
Drought Orders	When stocks are below DCL.



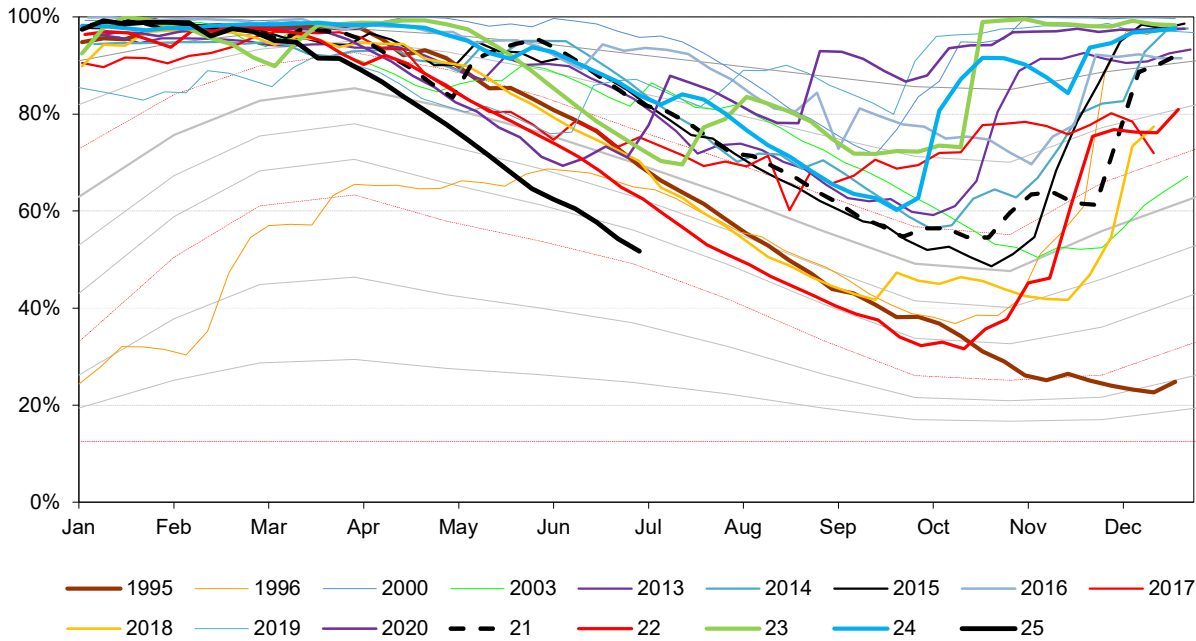
South West Reservoir Group
(Calderdale, Kirklees)



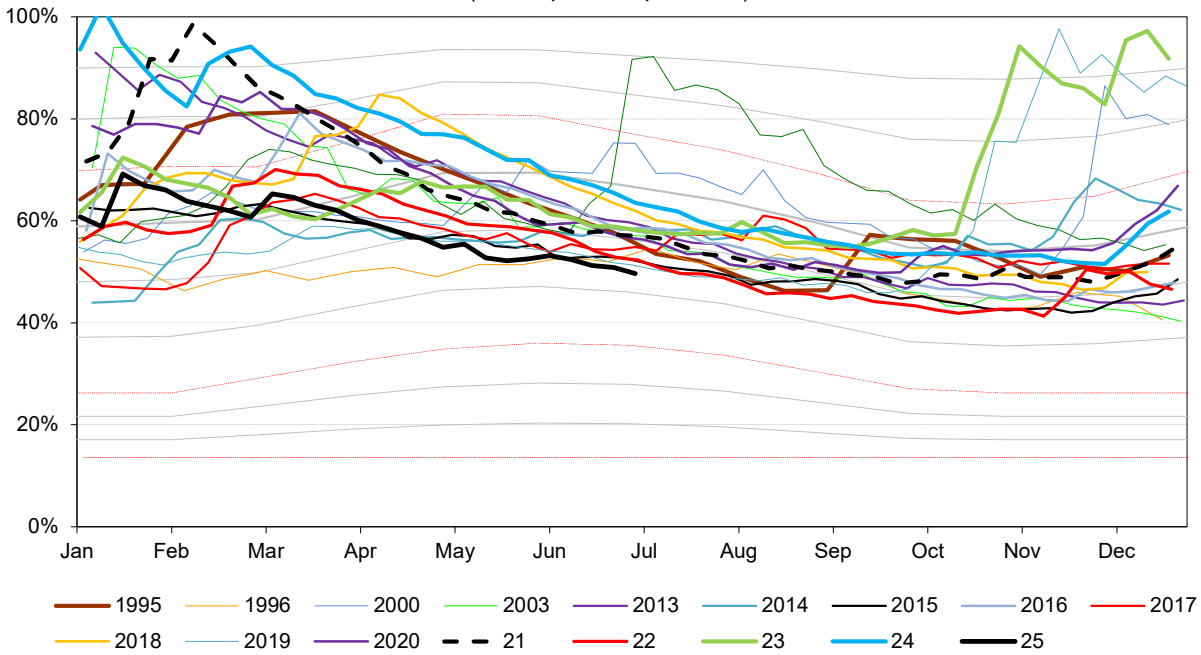
North Reservoir Group
(Leeds, Harrogate)

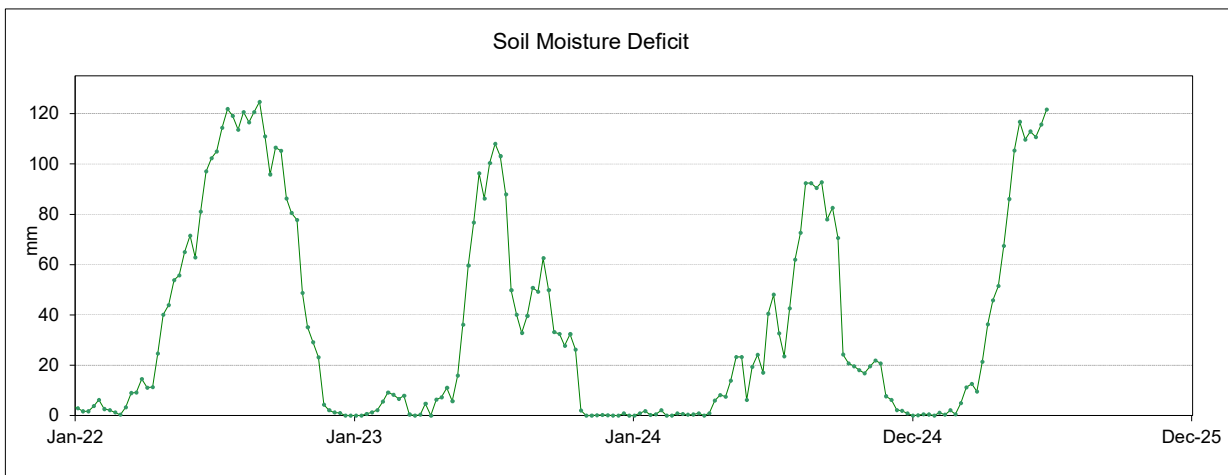
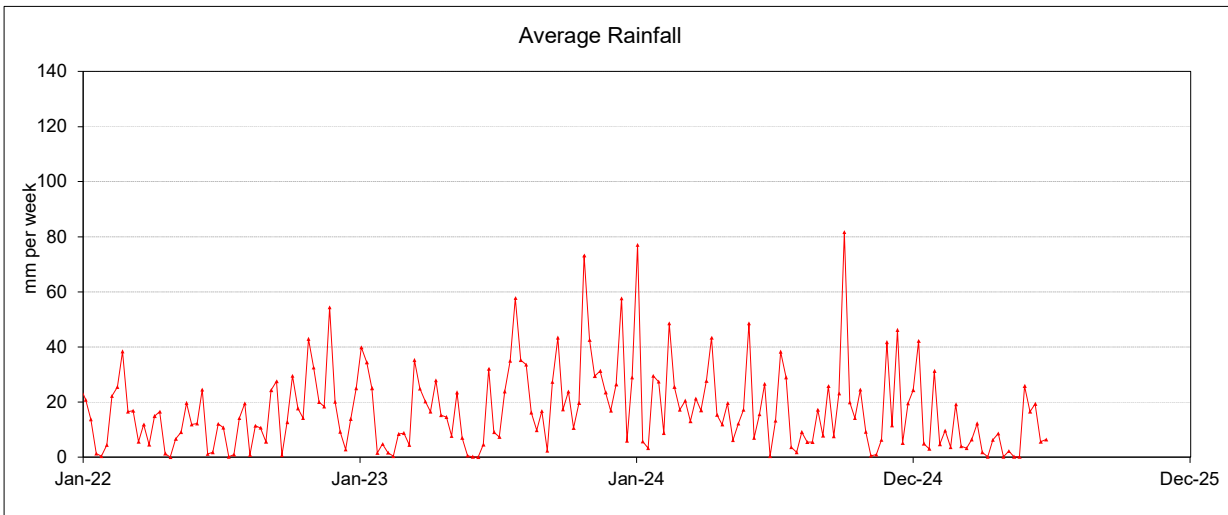
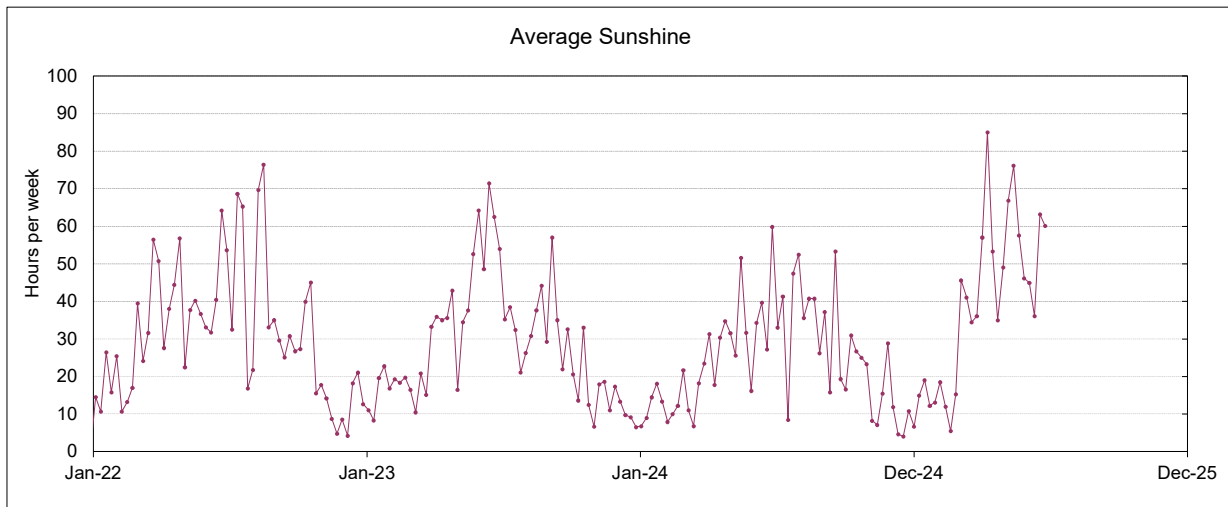


South Reservoir Group
(Sheffield, Barnsley)



East Reservoir Group
(Hull Aquifer, Tophill Low)





This page will normally be updated monthly (approx mid month).

This data may be subject to change following routine validation checks.

Where showing a negative value, this is normal at certain sources, due to the imports of water into that source being greater than the volumes abstracted.

Units in Ml

Serial No	Source	Reporting Year	May	Run date		
				Year to date Ml	Annual Limit	01-Jun-25 % of Annual Limit
02/27/023/332	Ainderby Steeple Boreholes	C	129.8	629	1760	35.7%
03/28/083/010	Armthorpe Boreholes	C	247.4	1185	3319	35.7%
03/28/083/012	Austerfield Boreholes	C	225.5	1092	11615	9.4%
02/27/022/020	Aysgarth & Newbiggin Springs	C	15.1	77	341	22.7%
02/27/012/035	Baitings, Ryburn & Blackhouse reservoirs	C	568.7	2154	20457	10.5%
02/27/023/032	Bellerby Borehole and springs near Bellerby	F	77.3	151	1250	12.0%
02/27/022/209	Birk Gill & River Burn	C	54.6	1566	6400	24.5%
02/27/012/254	Boothwood Reservoir & associated catchwaters	C	325.7	1511	20457	7.4%
02/27/10/112	Boshaw Whams Reservoir	C	0.0	0	55	0.0%
03/28/083/105	Boston Park Boreholes	C	146.1	874	3318	26.3%
02/27/024/305	Brayton Barff Boreholes	C	0.0	0	2250	0.0%
02/26/030/002	Bridlington	C	177.0	866	2500	34.6%
02/27/005/031	Broomhead Reservoir	F	1064.0	2019	12410	16.3%
02/26/030/004	Burton Agnes	C	78.7	376	1000	37.6%
02/27/018/080	Carlton Hanger Lane Boreholes	C	230.7	1432	3500	40.9%
02/27/018/079	Carlton Mill Lane Boreholes	C	180.8	827	3800	21.8%
02/27/019/009	Carr Bottom Reservoir, Burley Woodhead	C	0.0	18	409	4.4%
02/27/023/340	Catterick Boreholes	F	210.3	408	3650	11.2%
02/27/027/136	Cayton Carr Lane Boreholes	C	100.6	144	3928	3.7%
02/27/027/163	Cayton Station Road Borehole	C	108.9	755	2646	28.5%
02/27/019/137	Chelker Reservoir	C	84.4	859	5000	17.2%
02/27/023/031	Coalsgarth Springs	C	6.2	41	750	5.5%
02/27/011/064	Colne Valley Catchwaters	F	426.4	951	5840	16.3%
02/26/032/126	Cottingham Well	C	981.0	5142	18184	28.3%
02/27/018/081	Cowick Boreholes	C	378.1	1824	5250	34.7%
02/27/023/046	Cranehow & Downholme Springs	C	0.0	0	318	0.0%
02/27/023/030	Crumma, Newsham & Gandale Springs	C	56.8	298	1364	21.8%
02/27/005/030	Dale Dyke & Agden Reservoirs	F	1161.8	2271	21412	10.6%
02/27/012/261	Dean Head & Scammonden	F	210.0	468	3650	12.8%
02/27/19/121	Dib Spring, Hawkswick	C	0.0	0	27	0.0%
02/26/032/126	Dunswell Well	C	574.4	2435	16593	14.7%
NE/27/025/021	East Ness Boreholes	F	294.2	596	5680	10.5%
02/26/031/087	Elmswell Wold Borehole	C	21.8	22	1273	1.8%
02/27/015/045	Embsay Reservoir	C	31.6	401	1846	21.7%
02/27/016/196	Esholt Sewage Treatment Works	C	0.0	0	88	0.0%
02/26/032/124	Etton Boreholes	C	143.3	580	5100	11.4%
03/28/083/012	Finningley Boreholes	C	334.2	1540	6780	22.7%
02/27/022/328	Fossdale (High Shaw) Springs	C	9.8	50	227	22.1%
02/27/018/120	Goosehouse Boreholes	C	256.3	960	3500	27.4%
02/27/012/043	Gorpley Reservoir	C	0.0	0	1823	0.0%
02/27/016/022	Graincliffe Reservoir	F	-111.3	-118	2728	-4.3%
02/27/012/037	Green Withens Ringstone Res & catchwater	C	480.9	2037	20457	10.0%
02/27/019/051	Greenhow Tunnel (Nidd Aqueduct) Dale Head Intake	C	0.0	0	214	0.0%
02/27/019/052	Greenhow Tunnel (Nidd Aqueduct) No.2 Access Shaft	C	0.0	0	6819	0.0%
NE/27/019/005	Grimwith Reservoir to Nidd Aqueduct	F	399.8	859	3650	23.5%
02/26/030/003	Haisthorpe Boreholes	C	194.1	1165	5000	23.3%
03/28/083/012	Hatfield Boreholes	C	127.3	602	3319	18.1%
03/28/083/100	Hatfield Woodhouse Boreholes	C	0.0	0	3320	0.0%
02/27/029/010	Hazel Head Springs	C	28.0	225	1162	19.4%
02/27/012/041	Hebden, Luddenden & Hebble Valley Resrs	F	1095.0	2215	15695	14.1%
02/27/018/077	Heck Boreholes	C	0.0	0	2489	0.0%
03/28/083/012	Highfield Lane Boreholes	C	446.4	2173	11615	18.7%
02/27/023/685	Hollin Hill Borehole	F	8.2	12	45	25.9%
02/27/010/063	Holmestyes & Digley Reservoirs	F	204.9	416	5840	7.1%
02/27/22/024	Horsehouse Spring, leyburn	C	0.0	0	33	0.0%
02/27/027/002	Howe Hill Well	F	79.1	157	1014	15.5%
02/26/031/006	Hutton Cranswick	C	51.1	228	796	28.7%
02/27/005/012	Ingbirchworth Reservoir & Annat Royd Intake	C	101.6	1044	3637	28.7%
02/27/005/202	Ingbirchworth South Borehole	F	4.2	8	132	6.3%
02/27/027/058	Irton	C	491.6	2426	8215	29.5%
02/27/21/015	John O'Gaunts and Beaverdyke Reservoirs	C	0.0	0	1909	0.0%
02/27/014/010	Keighley Moor Reservoir	F	41.9	75	6951	1.1%
02/27/025/128	Keld Head Boreholes	C	183.8	891	3319	26.8%
02/26/032/126	Keldgate Boreholes	C	235.5	1253	5819	21.5%
02/26/031/002	Kilham	C	29.1	66	1818	3.6%

02/27/005/032	Langsett Reservoir	F	935.5	1808	17155	10.5%
02/27/022/210	Leighton Reservoir & Spruce Gill stream intake	C	969.1	3247	13184	24.6%
03/28/083/107	Littleworth Borehole	C	0.0	0	1659	0.0%
02/27/028/270	Loftsome Bridge ASR Borehole No.1	C	0.0	0	150000	0.0%
02/27/014/009	Lower Laithe Reservoir	F	106.0	330	6951	4.8%
02/27/005/011	Midhope Reservoir & Knoll Brook Intake	F	262.8	597	17155	3.5%
02/26/034/006	North Newbald	C	0.0	0	548	0.0%
03/28/083/012	Nutwell Boreholes	C	206.4	978	4983	19.6%
02/27/019/006	Panorama, Hilltop & Old Reservoirs & Springs	C	14.2	135	1000	13.5%
02/27/018/078	Pollington Boreholes	C	211.4	998	5000	20.0%
02/27/014/058	Ponden Reservoir	F	148.5	187	6951	2.7%
02/27/016/023	Reva Reservoir, Hawkesworth	C	17.0	380	1364	27.9%
02/27/005/029	Rivelin and Redmires Reservoirs	F	149.6	306	8030	3.8%
02/27/028/017	River Derwent at Elvington	F	5681.5	10986	75000	14.6%
02/27/028/083	River Derwent at Loftsome Bridge	F	1531.9	3314	30400	10.9%
02/27/029/012	River Esk	C	290.5	1366	7823	17.5%
02/26/031/047	River Hull & West Beck	C	1360.7	5659	25000	22.6%
02/26/032/194	River Hull for Sewer Cleaning	C	0.0	0	91	0.0%
02/27/024/078	River Ouse at Acomb	F	871.7	1646	35000	4.7%
02/27/024/158	River Ouse at Moor Monkton	F	2706.3	5868	73000	8.0%
02/27/022/214	River Ure at Kilgram Bridge	F	243.8	460	15000	3.1%
02/27/020/196	River Wharfe at Arthington	F	84.9	95	19009	0.5%
02/27/019/129	River Wharfe at Lobwood	F	2322.5	4576	27392	16.7%
03/28/083/012	Rossington Bridge Boreholes	C	0.0	0	5172	0.0%
02/27/022/027	Roundhill and Lumley Moor Reservoirs	C	1.6	219	3500	6.3%
02/27/005/013	Royd Moor Reservoir & Intakes	C	9.5	593	2955	20.1%
02/27/021/016	Scargill Reservoir	C	64.7	386	1932	20.0%
02/27/021/092	Scarhouse & Angram Resvrs with tunnel & catchwater	C	2917.2	15264	38164	40.0%
02/27/15/149	Silsden Beck, Stilling-Basin at foot of Silsden Reservoir Emb	C	0.0	0	10	0.0%
02/26/032/126	Springhead Well	C	688.0	3384	13638	24.8%
02/27/022/021	Stalling Busk & Marsett Springs	C	0.0	0	33	0.0%
02/27/022/208	Stock Beck, Carlesmoor Beck & River Laver	C	54.8	1539	3500	44.0%
02/27/023/684	Stubbing Nook Borehole	F	29.4	50	135	37.3%
03/28/083/012	Thornham Boreholes	C	309.0	1498	6213	24.1%
02/27/016/160	Thornton Moor & Stubden Reservoirs	C	259.2	1454	6214	23.4%
02/27/012/038	Turvin Clough	C	36.4	43	4014	1.1%
02/27/019/054	Upper & Lower Barden Reservoirs	C	320.6	2809	14223	19.7%
02/27/020/088	Washburn Valley Reservoirs	C	2550.2	13083	43800	29.9%
02/27/015/041	Watersheddles Reservoir	F	113.9	252	6951	3.6%
02/27/016/021	Weecher Reservoir	F	6.1	94	909	10.4%
02/27/011/065	Wessenden Valley, Blackmoorfoot & Deerhill	F	634.1	1264	12410	10.2%
02/27/023/034	West Stonesdale (Garland Hill) Springs	C	0.0	0	282	0.0%
02/27/015/042	Whinney Gill & Jenny Gill Reservoirs	C	0.0	0	377	0.0%
02/27/005/026	Winscar, U & L Windleden, Harden & Snailsden	F	755.2	1365	10140	13.5%
02/27/012/036	Withens Clough Resr & Catchwater	F	181.0	1009	3319	30.4%
02/27/010/011	Yateholme, Riding Wood, Ramsden & Brownhill	F	323.2	596	6820	8.7%

Licences with Aggregated Annual Quantities		May	Year to date MI	Annual Limit	% of Annual Limit
Baitings, Ryburn, Boothwood, Green Withens	C	1375	5702	20457	28%
Langsett, Midhope	F	1198	2406	17155	14%
Worth Valley	F	410	845	6951	12%
River Derwent (Elvington, Loftsome)	F	7213	14300	94841	15%
Cayton, Irton	C	701	3325	10700	31%
Selby Boreholes	C	1257	6040	25283	24%
Doncaster Wellfield	C	2042	9942	30295	33%
Doncaster Sub Group	C	1649	7883	26049	30%
Austerfield & Highfield Lane	C	672	3266	9956	33%
Hull Groundwater Sources	C	2479	12215	32850	37%

Third Party Agreements (Calendar Year)

Source	Reporting Year	Units in MI		Run date	
		May	Year to date MI	Annual Limit	% of Annual Limit
CRT, Hudds Narrow Canal	C	132	317	1273	25%
Severn Trent Ladybower Reservoir	C	1267	7345	21550	34%

Reading date: 13-Jun-25

	Reporting Year	Year to date MI	Annual Limit	% of Annual Limit
Winscar To Langsett Transfer Usage	F	566	2482	8%