

1. Rainfall

The Yorkshire Region Has Received 97.9% of LTA for December

2. Reservoirs (surface water supply reservoirs not including Hull)

Over the Past Week Our Reservoir Stocks Have Decreased By -0.03% To 92.1%

3. Rivers

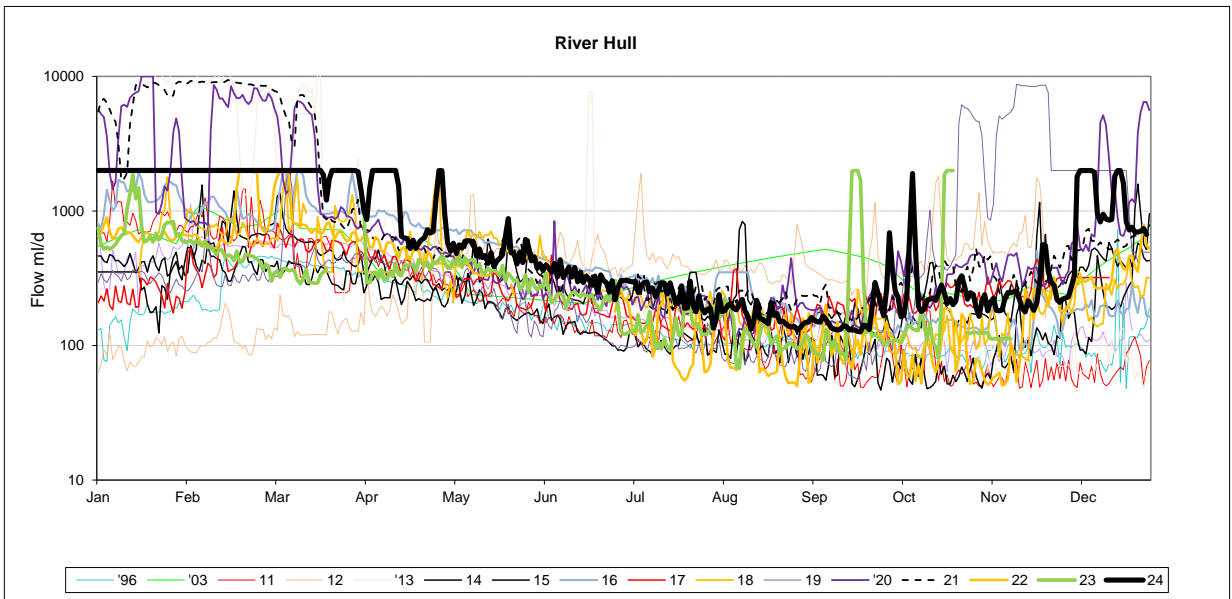
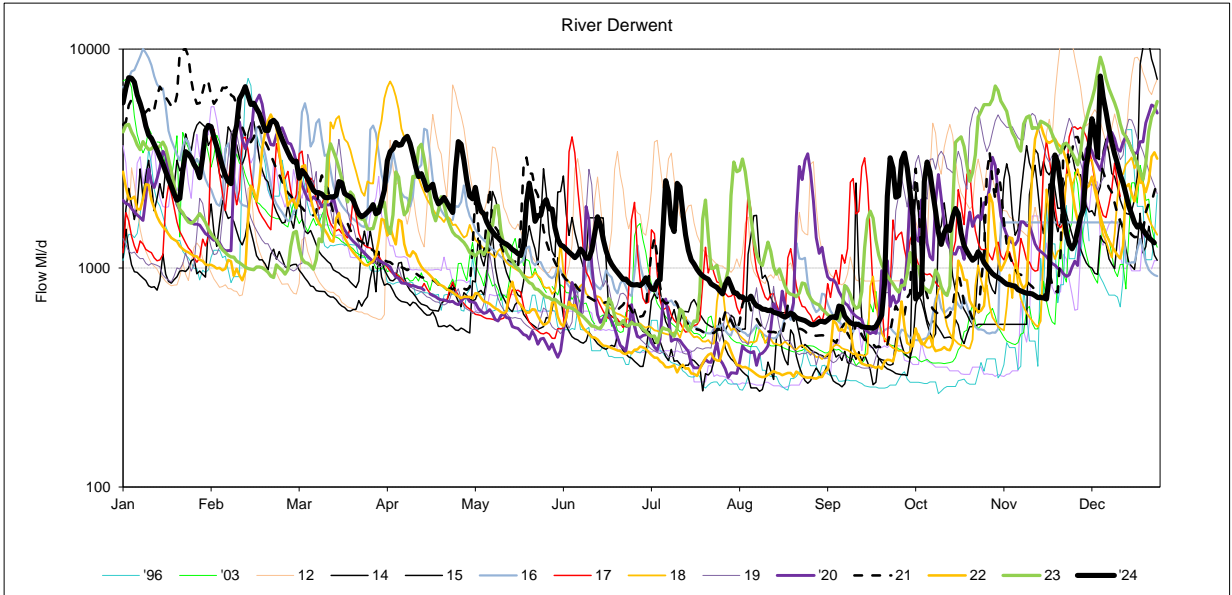
All of Our Rivers are Above Critical Levels

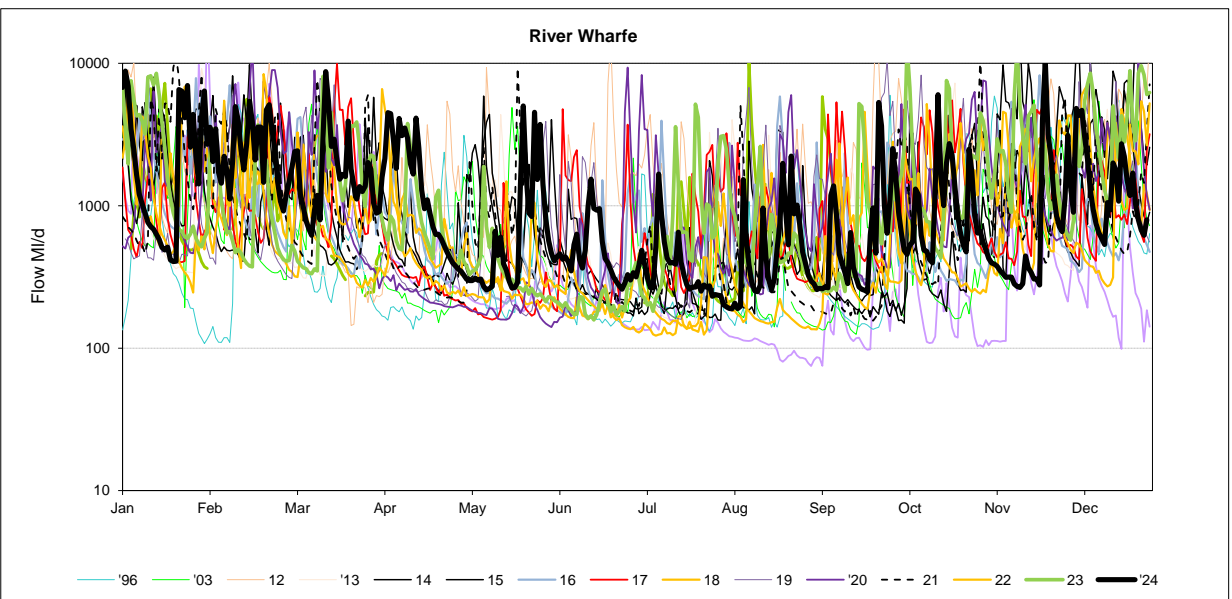
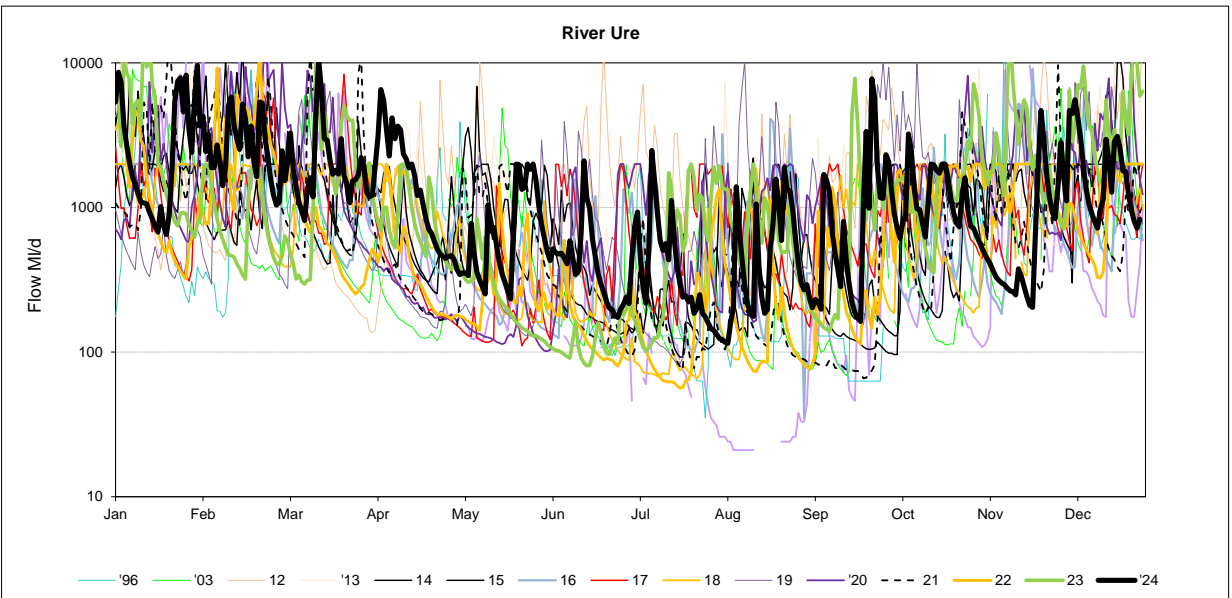
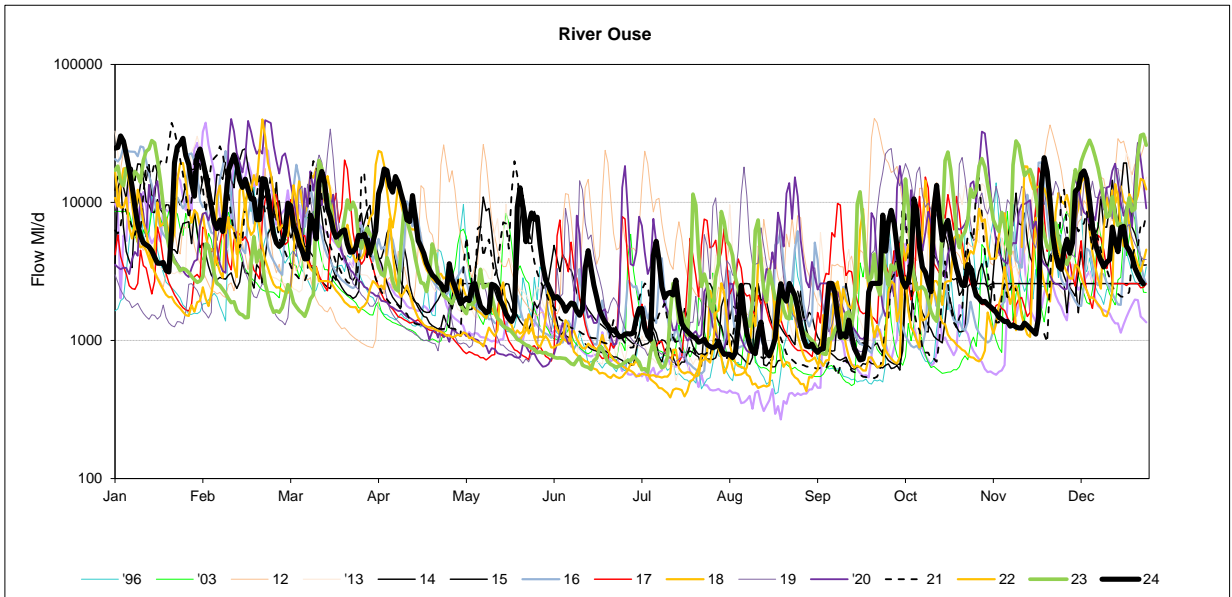
4. Demand

Regional Demand = 1299.4 Ml/d (including York)

5. Comments

	Mon 30-Dec	Mon 23-Dec	Mon 16-Dec	Mon 09-Dec	Critical flow bands
Derwent	✓ 1303	✓ 1614	✓ 3314	✓ 4220	305
Hull (using gauged (residual flows) only from 2011)	✓ 669	✓ 831	✓ 872	✓ 2000	45 / 159 / 227
Ouse	✓ 2572	✓ 6726	✓ 3411	✓ 16960	400 / 650 / 1000
Ure	✓ 827	✓ 2563	✓ 969	✓ 3024	50 / 163 / 300
Wharfe	✓ 796	✓ 1514	✓ 1053	✓ 2108	252 / 389 / 488 / 580





Yorkshire Region (Met Office)				England/Wales	
Month	mm	LTA	LTA(%)	mm	LTA(%)
May	81	55	148%	85	139%
June	48	72	67%	36	52%
July	74	69	108%	80	113%
August	30	77	39%	54	68%
September	118	71	167%	136	183%
October	72	84	86%	96	97%
November	51	89	57%	84	82%

SOURCE OF DATA : Hydrological Summary of Gt Britain, Institute of Hydrology

Yorkshire Water Services Data			
Rainfall Station	Total December	LTA December	LTA % December
Tophill	63.9	63	101%
Cottingham	77.3	64	121%
Bridlington	126.8	71	179%
Roundhill	103.2	111	93%
Fewston	60.3	89	68%
Osmotherley	66.2	66	100%
Scar House	132.4	158	84%
Watersheddles	137.2	149	92%
Gt Walden Edge	156.3	139	112%
Walshaw Dean	141.9	150	95%
Blackmoorfoot	117.6	130	90%
Ramsden	148.2	164	90%
Redmires	115.1	111	104%
Langsett	105.4	120	88%
YORKSHIRE REGION	110.8	113.2	98%
EAST REGION	83.5	66.0	127%
PENNINE (WEST)	116.7	126.1	93%

NDA= No data available/lack of readings, impacts % LTA for the month
SOURCE OF DATA : YWS RAIN GAUGES- weekly, so monthly data may include previous month or miss start of month

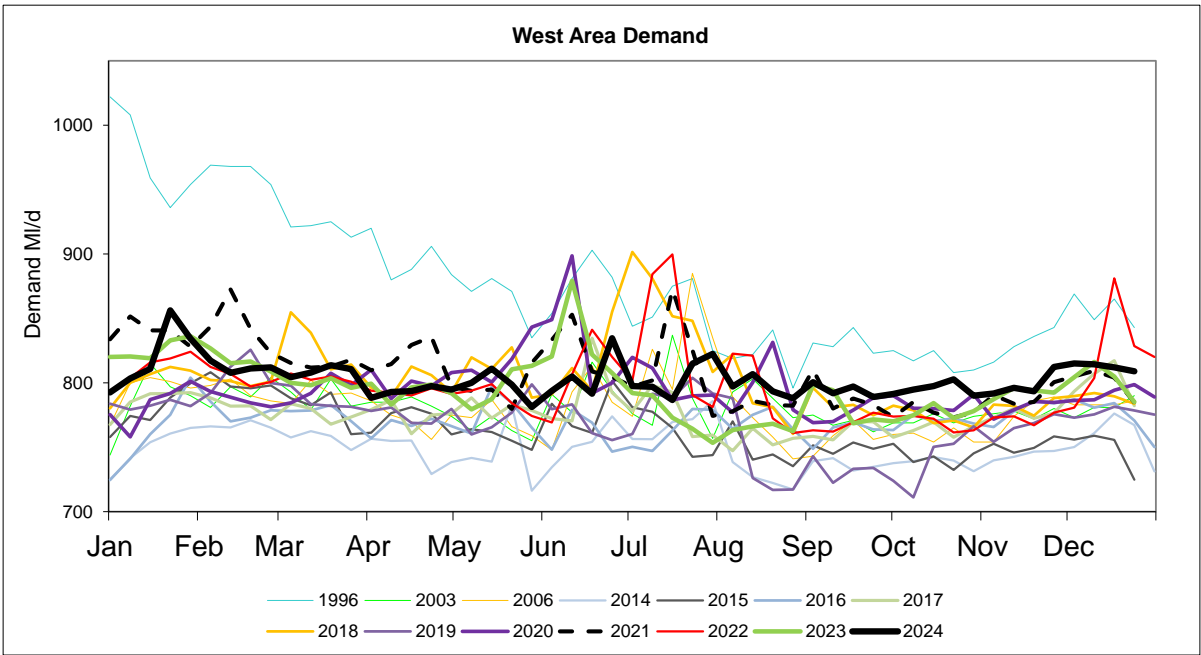
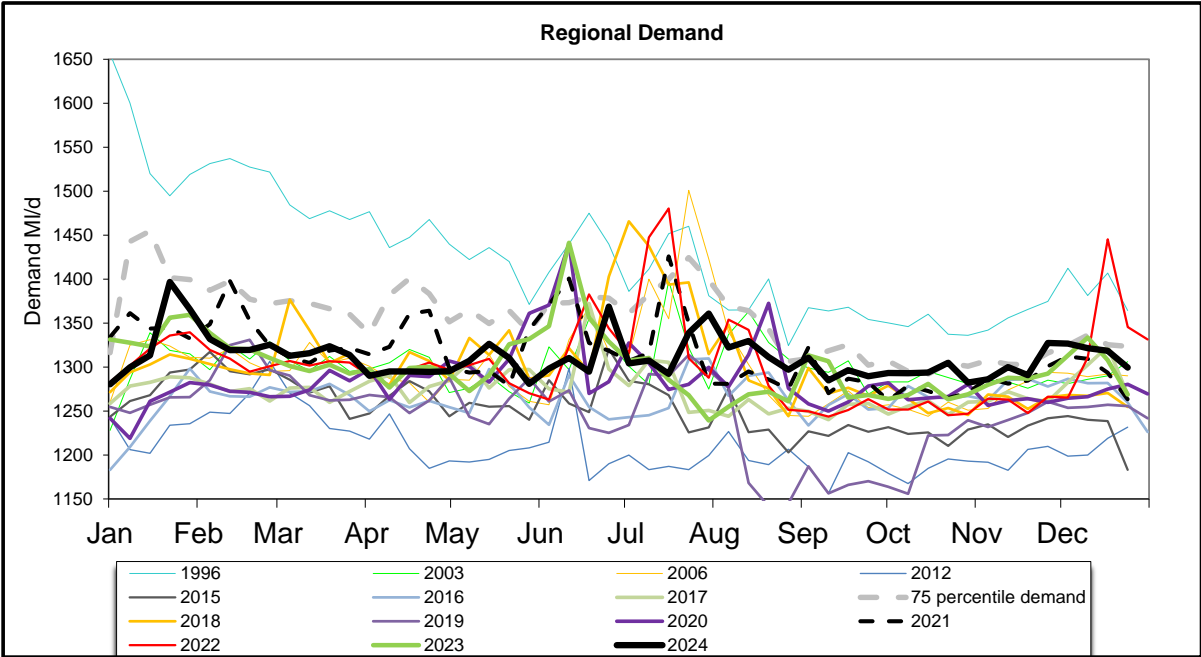
Daily Average Demand MI/d

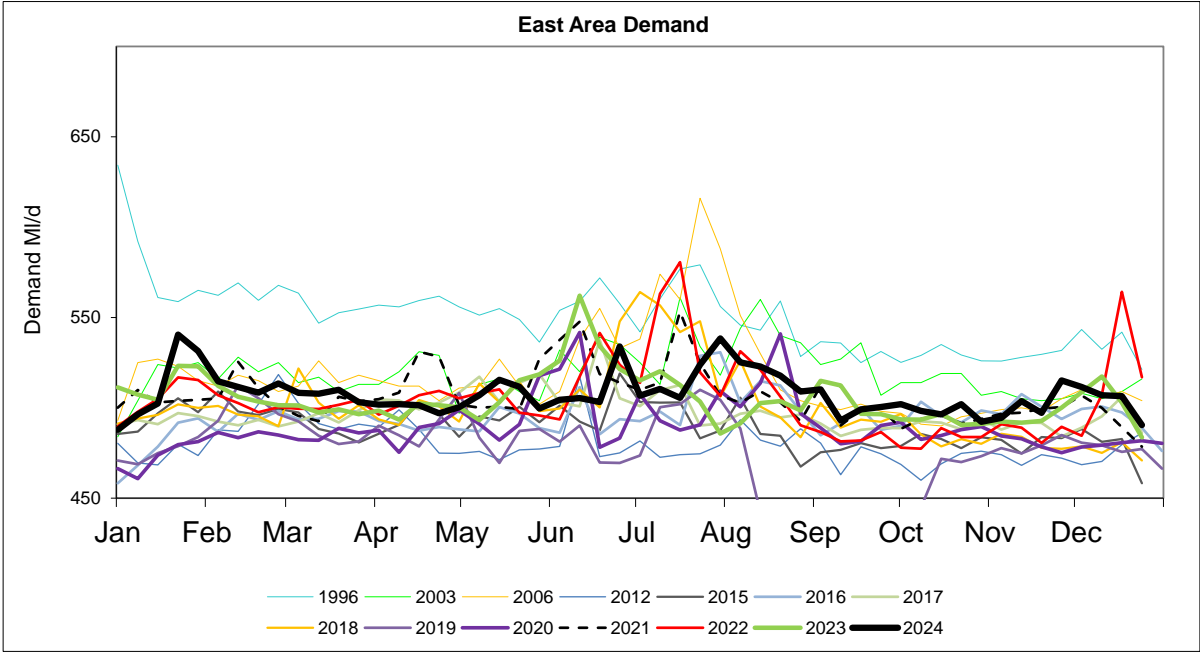
Week Ending Wednesday	L E E D S	W A K E + R F I E L D	S E L B Y	H A R R O G A T E	H U L L	M A L L T O N	S H E F F / B L Y	D O N C A S T E R	B R A D F O R D	C A L D E R	S K I P T O N	Y O R K A	R E G I O N
27/11/2024	172	77	41	77	161	54	273	82	145	155	38	52	1327
04/12/2024	172	77	41	77	158	53	276	82	146	155	39	52	1327
11/12/2024	174	76	41	75	156	52	278	81	145	154	39	50	1321
18/12/2024	173	79	40	75	158	53	278	81	144	152	39	48	1319
25/12/2024	167	76	39	75	154	51	281	78	146	152	37	43	1299

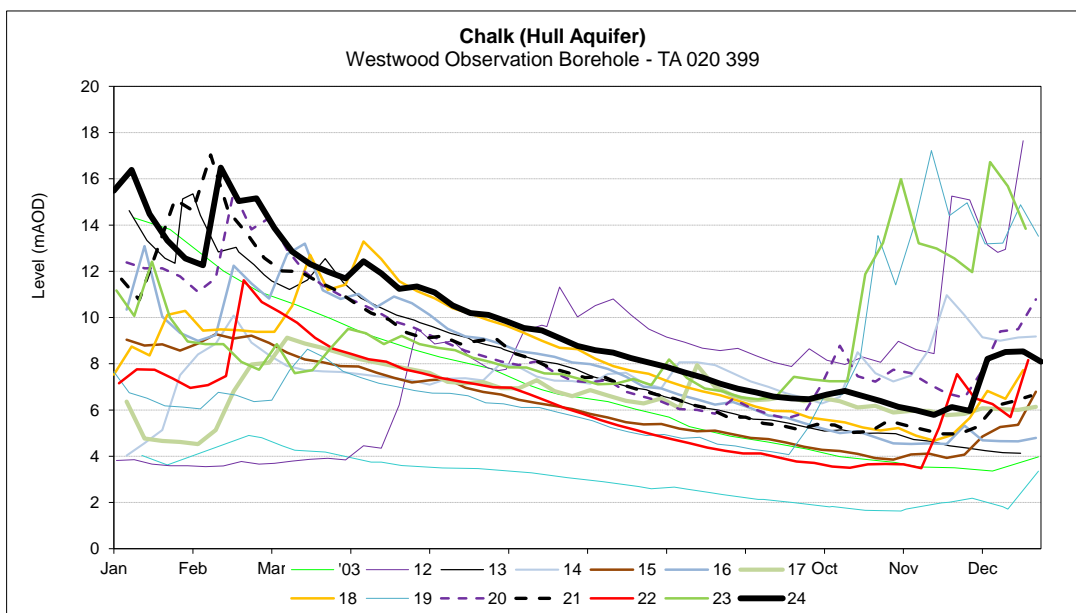
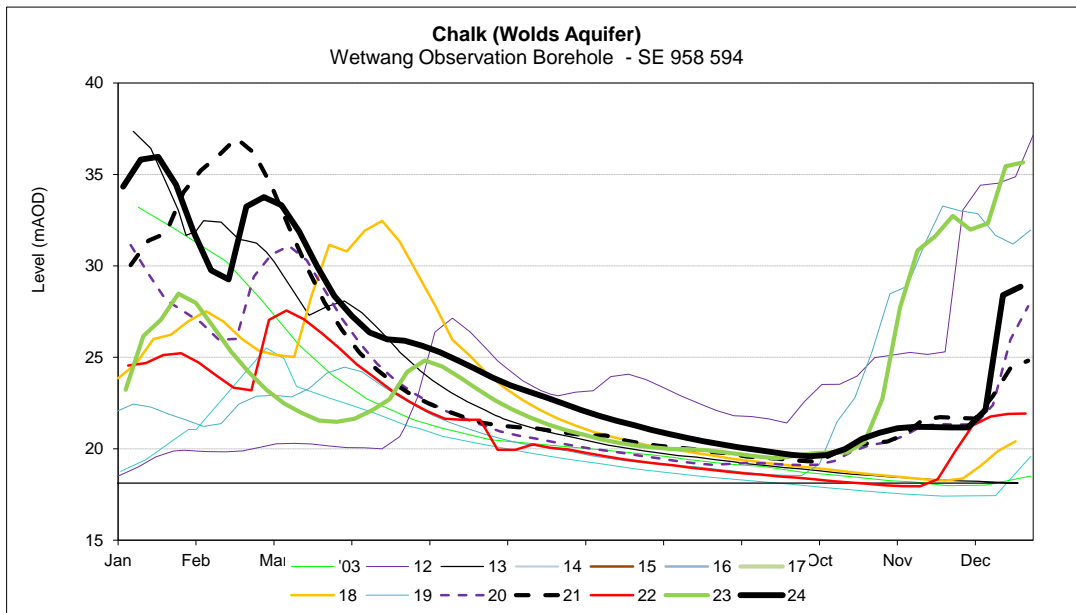
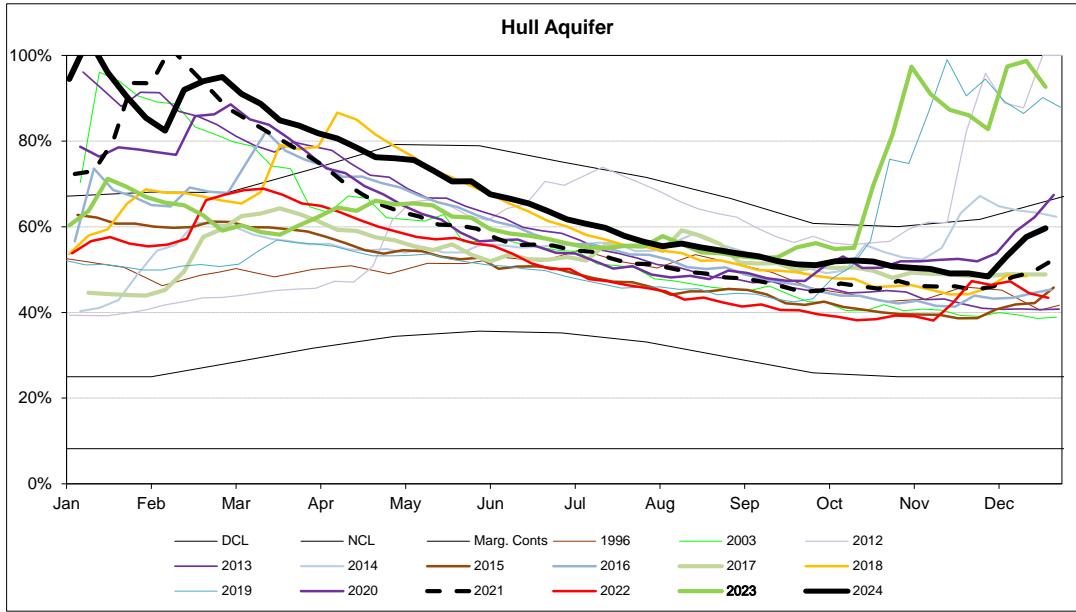
MONTHLY DEMANDS FROM WIS REPORT

Oct-24	162	57	40	71	156	51	285	69	139	147	36	47	1260
Nov-24	166	53	40	72	158	50	281	70	139	148	37	49	1263

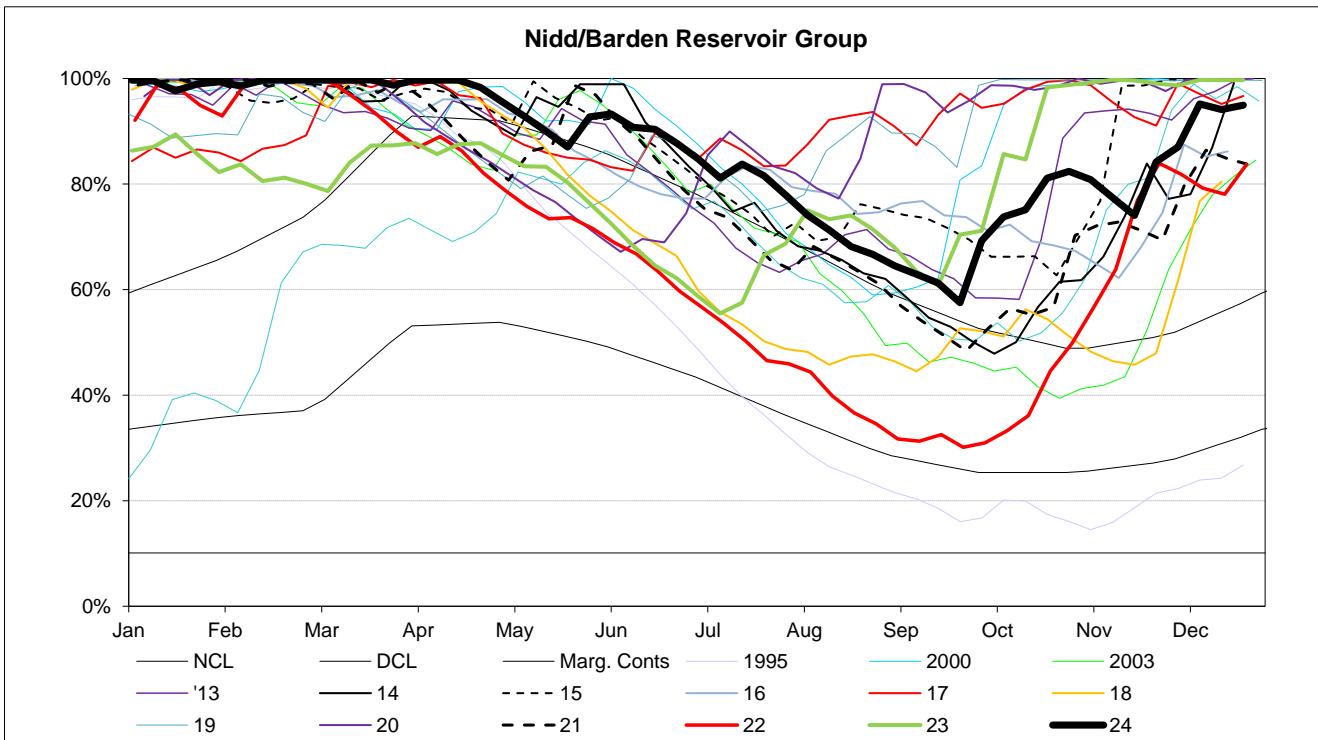
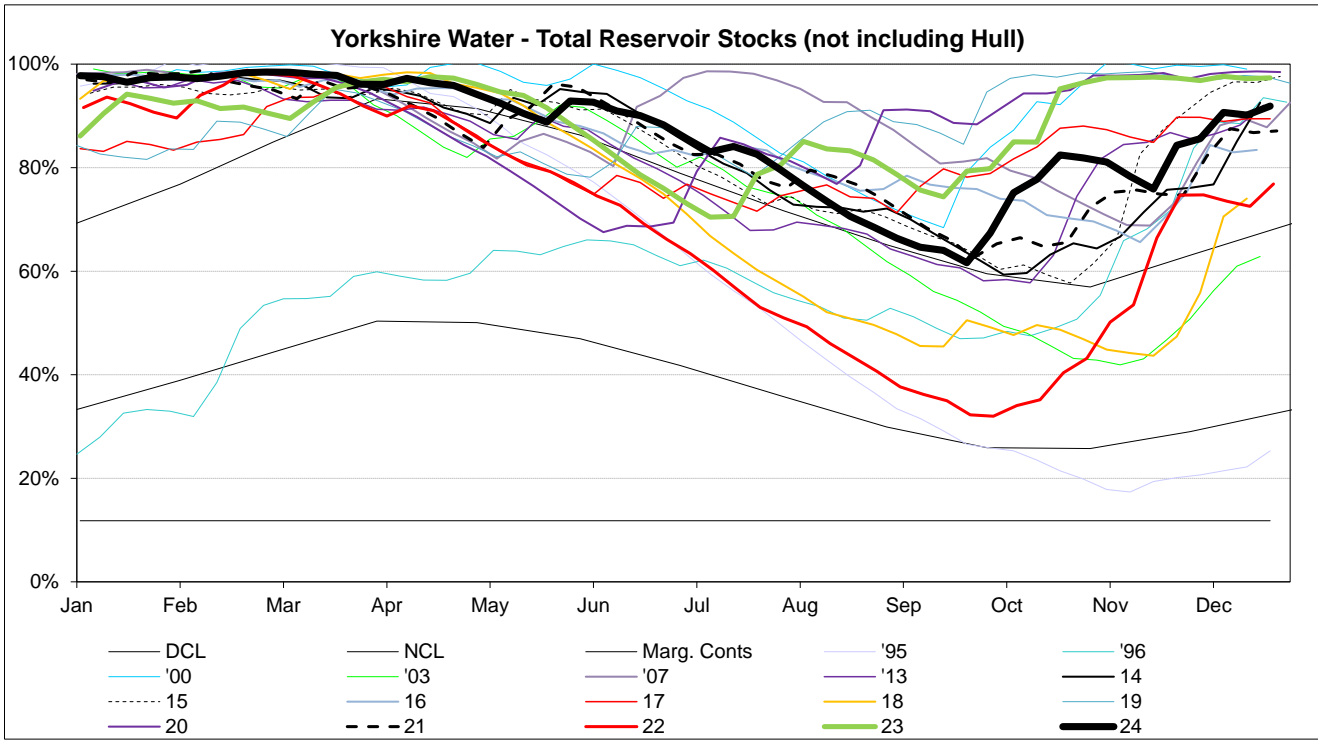
NB Current month demands include some estimates for minor sources and are not exactly comparable with previous months' figures.

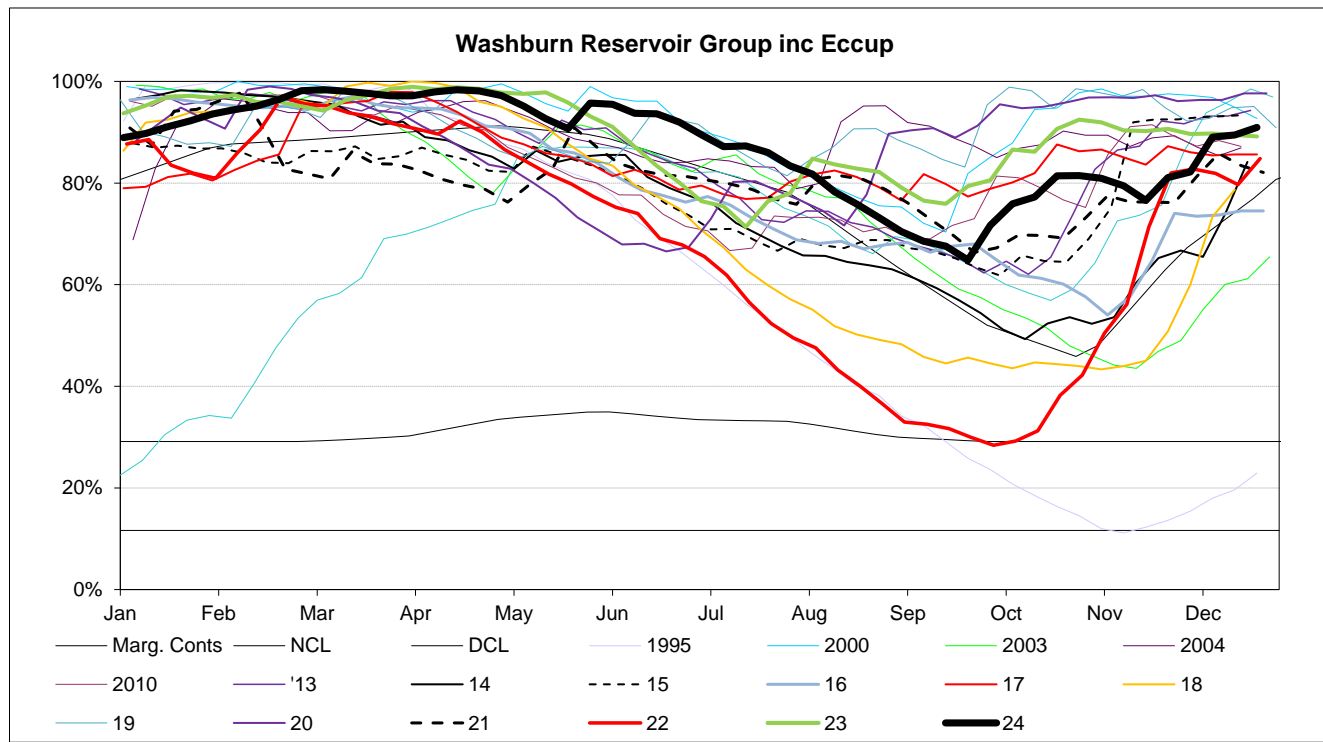
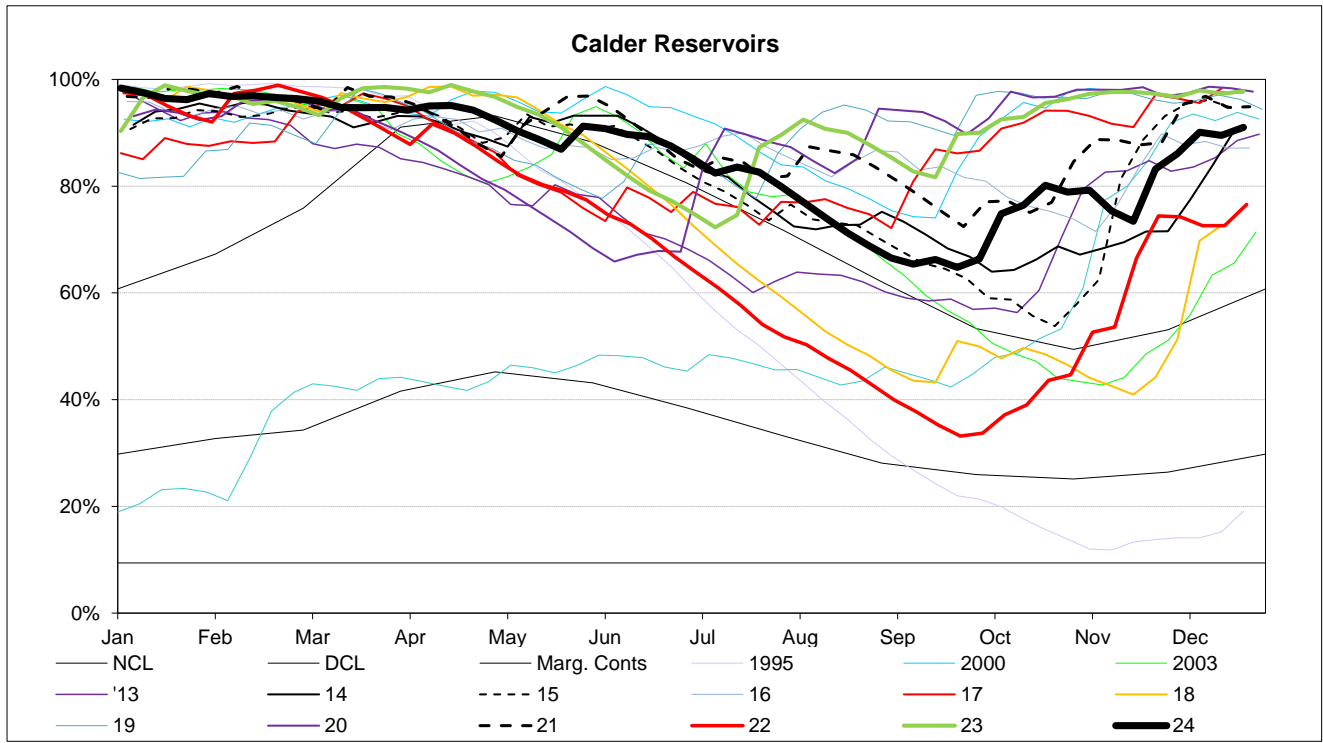




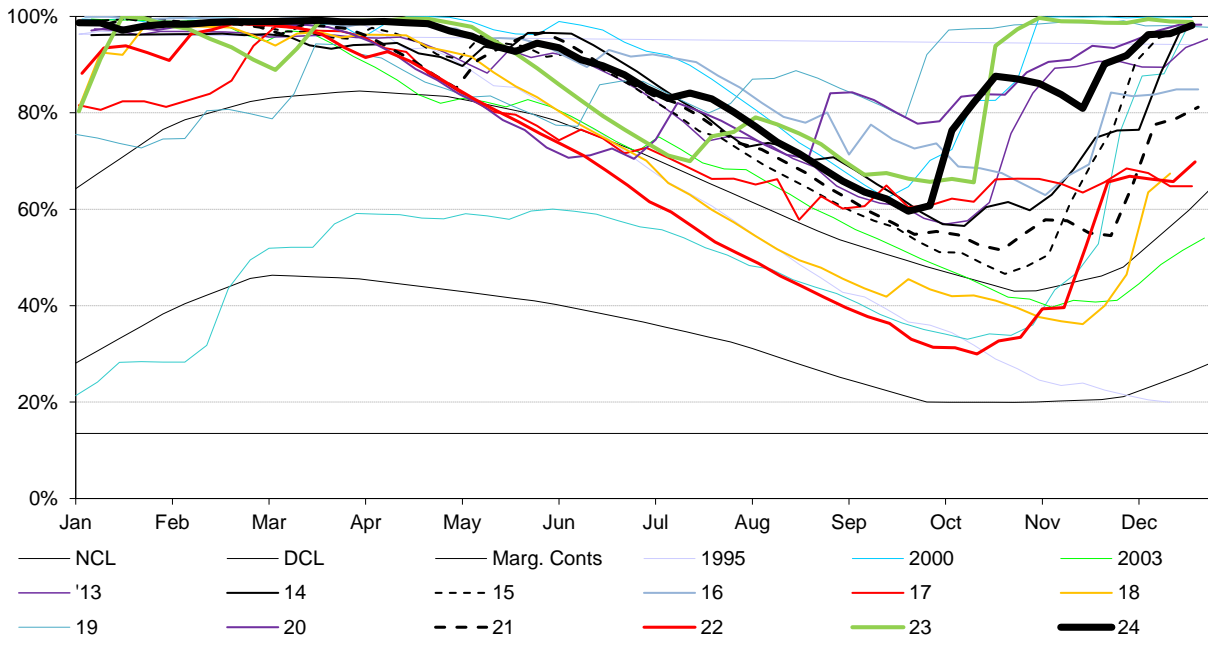


RESERVOIR STOCKS	30/12/2024		% Change	Planned Reservoir Safety Work	Required Drawdown & Duration	
Reservoir Group	% Stocks @	% Change	last week			
Calderdale (excl Withens Clough)	85.1%	0.2%	2.6%	Leakage Investigation Access for Tunnel Grouting at Middle IRE Increase Drawdown Capacity Increase Drawdown Capacity Leakage Investigation Spillway Grouting OSA Repairs Pipework Painting	Aug 24 - Dec 24 Apr 24 - Oct 24 May 25 - June 25 June 25 - Aug 25 Apr 25 - Sept 25 TBC Apr 25 - May 25 TBC	82.0% 28.0% 21.0% 10.0% 51.0% 40.0% 86.0% 76.0%
Boothwood/Ryburn (incl WC)	97.4%	-0.7%	0.1%			
(Gorpley)	73.2%	-2.5%	3.9%			
Huddersfield	88.5%	-0.4%	1.7%			
Brownhill/Digley	91.1%	-0.9%	2.4%			
Riding Wood	100.0%	0.0%	0.0%			
Walshaw Dean Lower	43.6%	-11.9%	5.3%			
Widdop	72.8%	2.9%	5.3%			
Widdop	72.8%	2.9%	5.3%			
Brownhill	100.0%	0.0%	0.0%			
Longwood Comp IRE	N/A	N/A	N/A			
Walshaw Dean Lower IRE	43.6%	-11.9%	5.3%			
Longwood ESR	N/A	N/A	N/A			
Calder Area Total	90.6%	-0.4%	1.4%			
Nidd/Barden/Chelker	95.4%	0.4%	0.8%	Embankment Stability Works Repair Ground Anchor Seepage Investigation Pointing Jet Wash Spillway and Survey Pointing	Jan 23 - Dec 24 Aug 24 - Mar 25 Oct 24 - Dec 24 Nov 24 - May 25 TBC Nov 24 - May 25	86.0% 87.6% 34.0% 78.0% 87.0% 59.0%
Grimwith	88.7%	0.3%	2.4%			
Worth Valley	93.3%	-0.5%	1.6%			
March Ghyll	87.8%	-2.0%	6.4%			
Ponden	99.7%	-0.3%	0.3%			
Keighley Moor	46.7%	4.2%	8.5%			
Chelker	92.6%	0.0%	-1.8%			
Hewenden	100.0%	0.0%	0.0%			
Chelker	92.6%	0.0%	-1.8%			
North West Area Total	92.4%	0.2%	1.6%			
Washburn/Eccup Resrs.	91.7%	0.7%	1.5%	Outlet Channel Repairs Bridge Repairs Inspection of Overflow and Upstream Face Upstream Face Repairs	Dates tbc Dates tbc Aug 24 - Mar 25 TBC	93.0% TBC 83.0% 17.0%
Thornton Steward	97.1%	0.0%	0.0%			
Leighton/Roundhill	98.5%	-1.5%	0.6%			
Haverah Park	99.5%	0.6%	12.9%			
Swinsty	69.3%	-3.3%	3.5%			
Thruscross	100.0%	0.0%	0.0%			
Cod Beck	100.0%	0.0%	0.0%			
Randy Mere	N/A	N/A	N/A			
North Area Total	93.3%	0.2%	2.5%			
Don Valley & Winscar	83.0%	0.0%	2.9%	Damage to Overflow Channel Damage to Overflow Channel Install Overflow Debris Barrier Overflow Investigation Siphon Commissioning	Nov 23 - Oct 25 Nov 23 - Oct 25 June 24 - Feb 25 Apr 25 -Sept 25 Feb 25 - Mar 25	98.0% 89.0% 95.0% 95.0% 58.0%
Rivelin Valley	95.0%	-5.0%	1.4%			
Little Don	96.2%	-0.3%	0.6%			
Ewden Valley	100.0%	0.0%	0.0%			
Loxley Valley	100.0%	0.0%	0.0%			
Redmires	90.5%	0.7%	2.2%			
Redmires Upper	91.7%	-0.3%	1.9%			
Redmires Middle	83.5%	1.3%	7.1%			
Broomhead	100.0%	0.0%	0.0%			
Strines	100.0%	0.0%	0.0%			
Rivelin Upper	96.8%	-3.2%	0.0%			
South Area Total	97.4%	-0.2%	0.5%			
Tophill Low	82.9%	-3.4%	7.2%			
Hull Aquifer	58.8%	-0.9%	2.1%			
East Area Total	60.8%	-1.1%	2.5%			
Regional Total (DCP) (inc East Area)	88.5%	-0.2%	1.5%			
YORKSHIRE TOTAL (Supply) (not inc East Area)	92.1%	0.0%	1.4%			

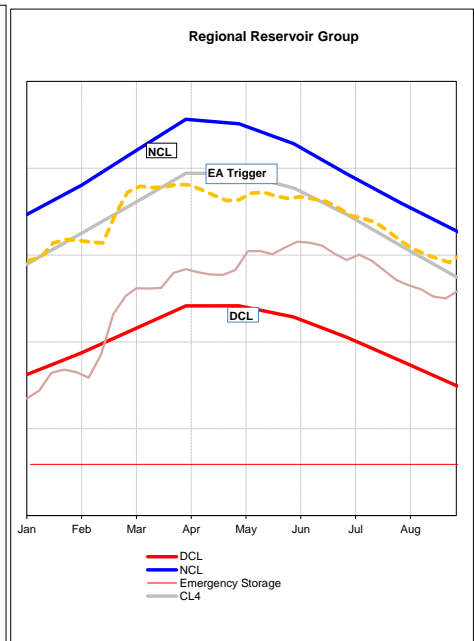
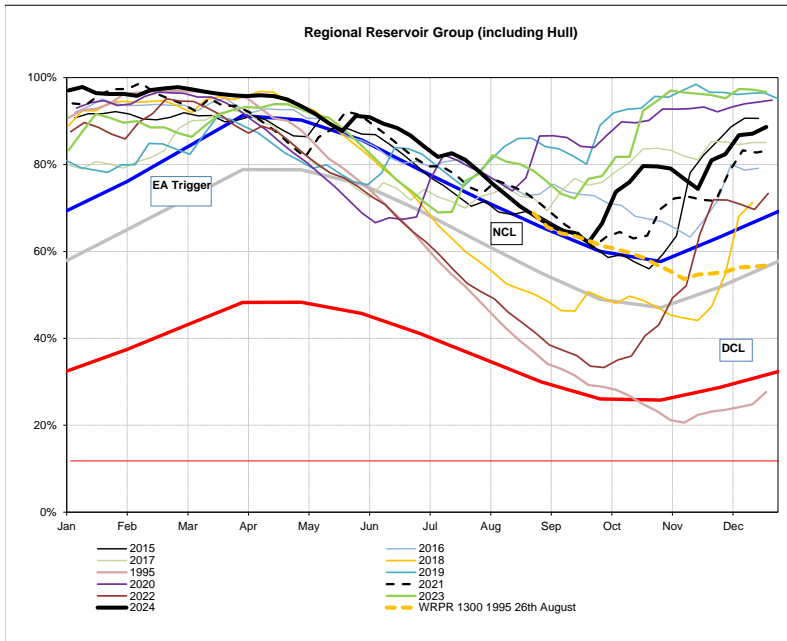




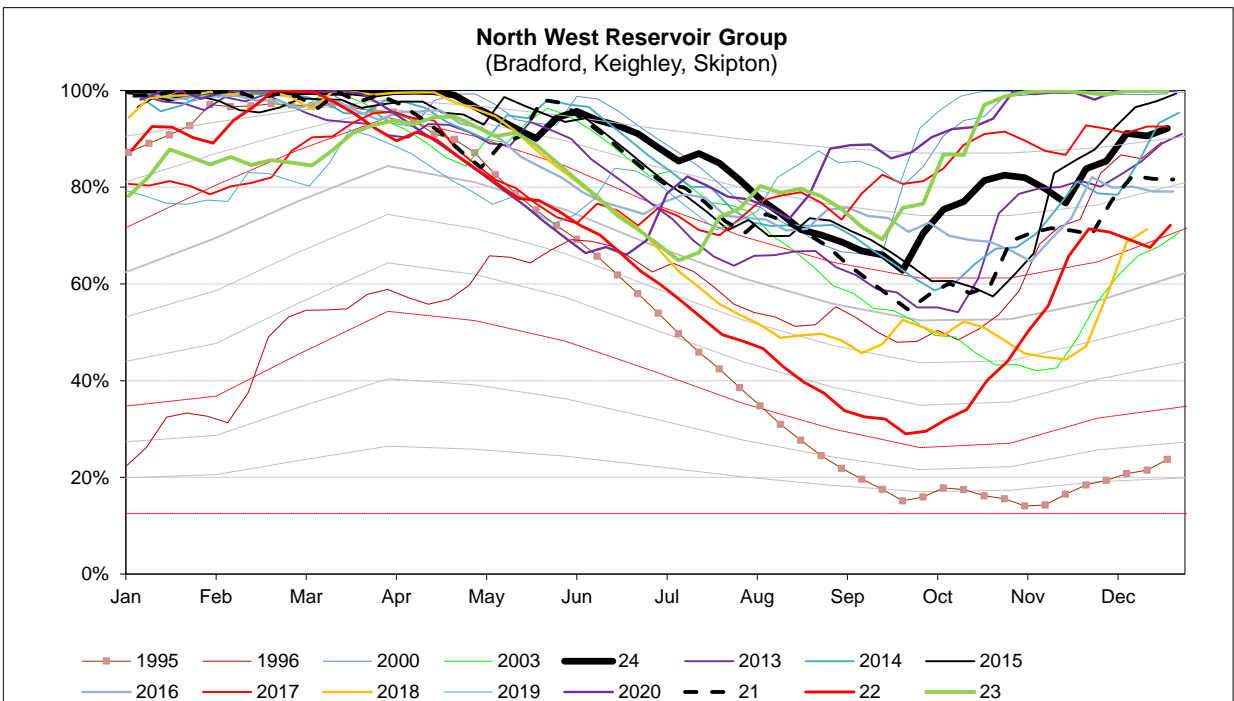
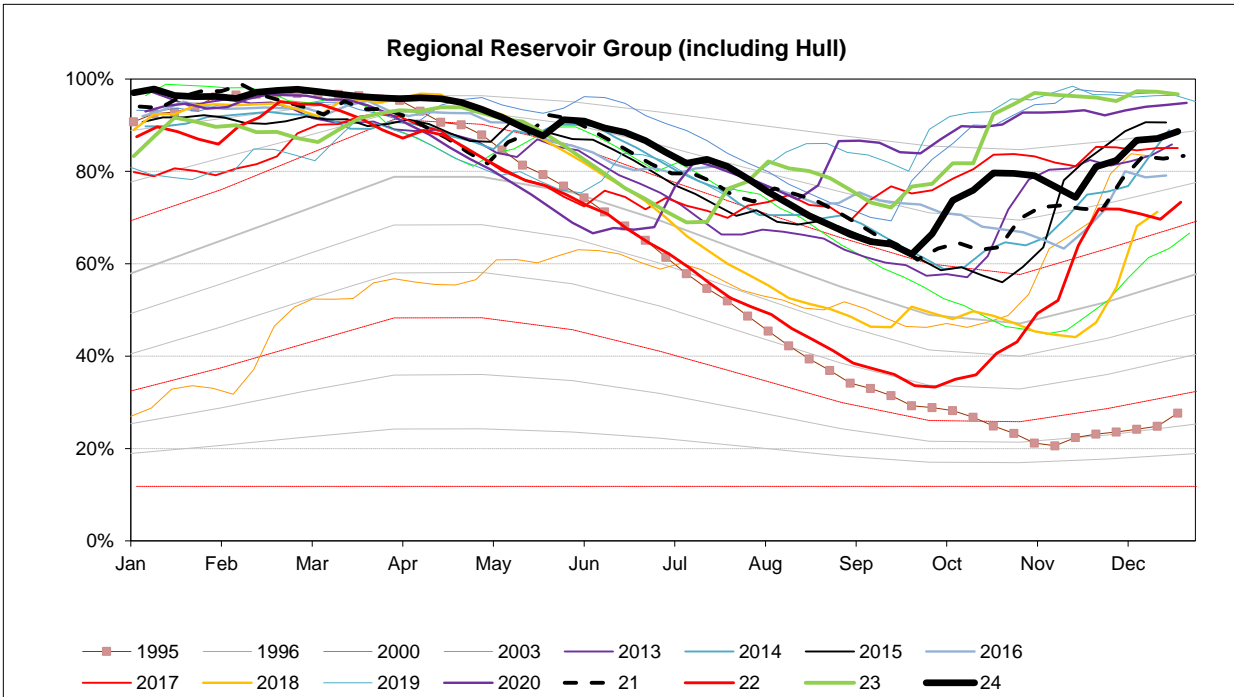
Sheffield & Barnsley Reservoirs



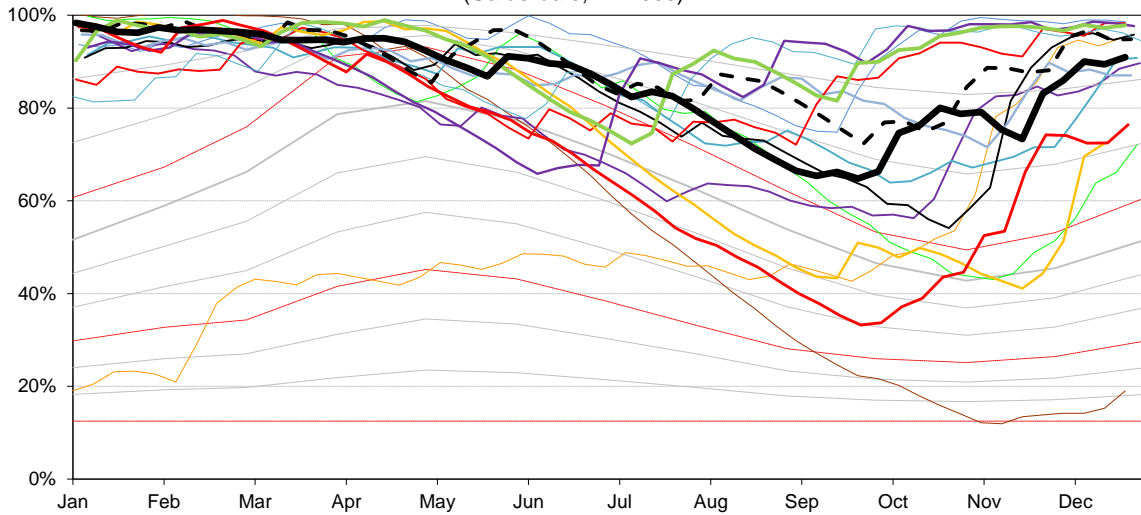
EA Stocks Report	30/12/2024						
	MI	%	% change		MI	%	% change
South West Area Supply Reservoirs				South Area Supply Reservoirs			
Calderdale Group	9482	85.1%	0.2%	Don Valley	2019	97.1%	-0.3%
Huddersfield Group	12490	88.4%	-0.5%	Little Don	7091	96.2%	-0.3%
Brownhill/Digley excl Holmestyes	5092	90.7%	-0.9%	Ewden Valley	4937	100.0%	0.0%
Boothwood/Ryburn	11396	97.4%	-0.5%	Loxley Valley	6874	100.0%	0.0%
				Rivelin	775	95.0%	-5.0%
South West Reservoir Group	39894	90.6%	-0.4%	Redmires	2514	90.5%	0.7%
Bradford Area Supply Reservoirs				South Reservoir Group	24210	97.4%	-0.2%
Gouthwaite	5538	95.3%	0.0%	Winscar Group	7503	80%	0.0%
Grimwith	19307	88.7%	0.3%				
Nidd/Barden/Chelker	18288	95.4%	0.4%	Compensation Reservoirs			
Rombalds/Thornton Group	2209	98.9%	-0.3%	Scout Dike	694	100.0%	0.0%
				Underbank	2867	100.0%	0.0%
Skipton Area Supply Reservoirs				Morehall	2129	98.0%	1.5%
Embsay	723	100.0%	0.0%	Damflask	5106	100.0%	0.0%
Worth Valley Group	3089	93.3%	-0.5%				
North West Reservoir Group	43615	92.4%	0.2%	North Area Supply Reservoirs			
				Washburn	21428	91.7%	0.7%
Compensation inc Silsden	2324	98.8%	-0.6%	Eccup	6497	92.7%	4.6%
Gouthwaite	5538	95.3%	0.0%	Leighton/Roundhill	7290	98.5%	-1.5%
March Ghyll & Elslack Reservoirs excluded for consistency with stocks predictions in WRAPSIM				Haverah Park	997	99.5%	0.6%
				Lumley Moor	378	99.0%	-0.2%
				Thornton Steward	921	97.1%	0.0%
East Area Supply Reservoirs							
Tophill Low	1396	82.9%	-3.4%	North Reservoir Group	31014	93.3%	0.2%
Hull Aquifer	11173	58.8%	-0.9%	Lindley Wood Compensation	1121	38.4%	-1.0%
East Reservoir Group	12569	60.8%	-1.1%	Regional Reservoir Group	158805	88.5%	-0.2%
				(sum of South West, North West, East, South, North & Winscar Reservoirs)			



Triggers	
EA early warning (CL4)	Water resources to advise EA on production
Hosepipe Restrictions	When projected falling stocks fall below DCL
Drought Orders	When stocks are below DCL.

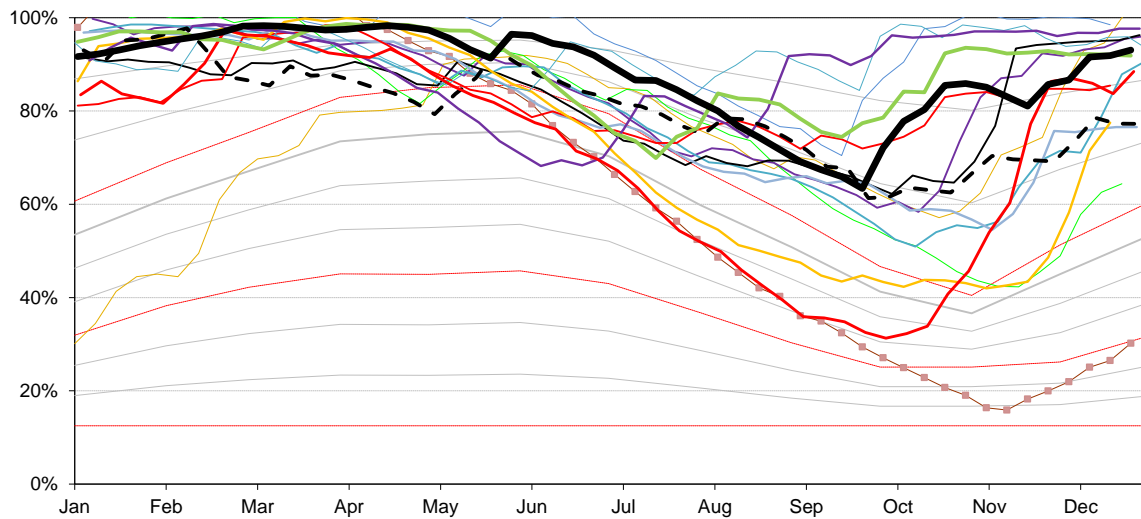


South West Reservoir Group
(Calderdale, Kirklees)



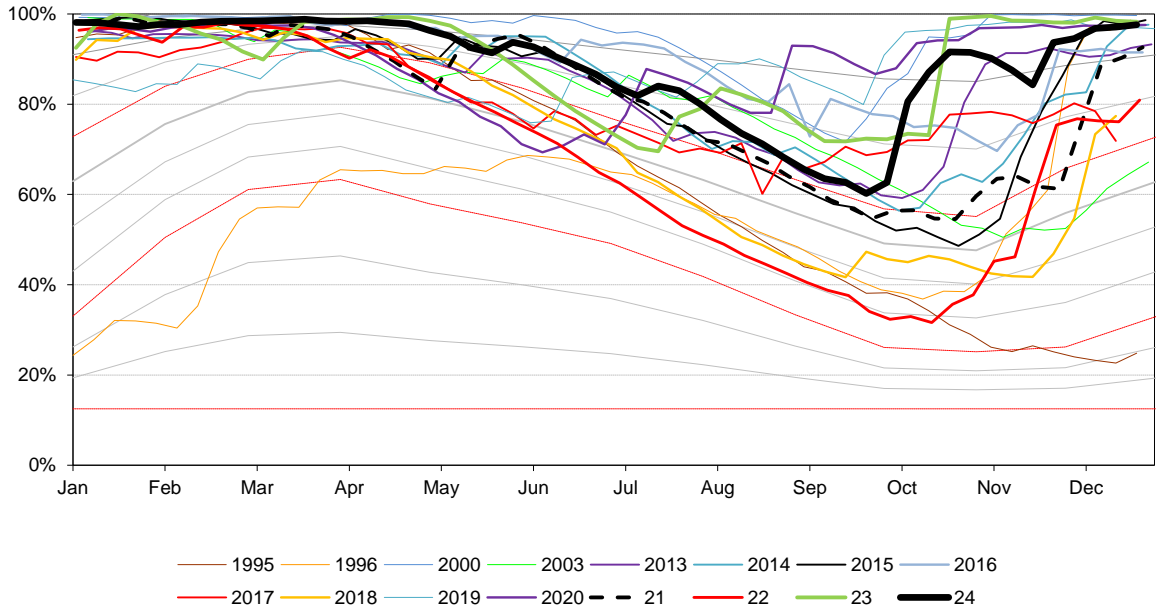
— 1995 — 1996 — 2003 — 2000 — 2013 — 2014 — 2015 — 2016
 — 2017 — 2018 — 2019 — 2020 - - 21 — 22 — 23 — 24

North Reservoir Group
(Leeds, Harrogate)

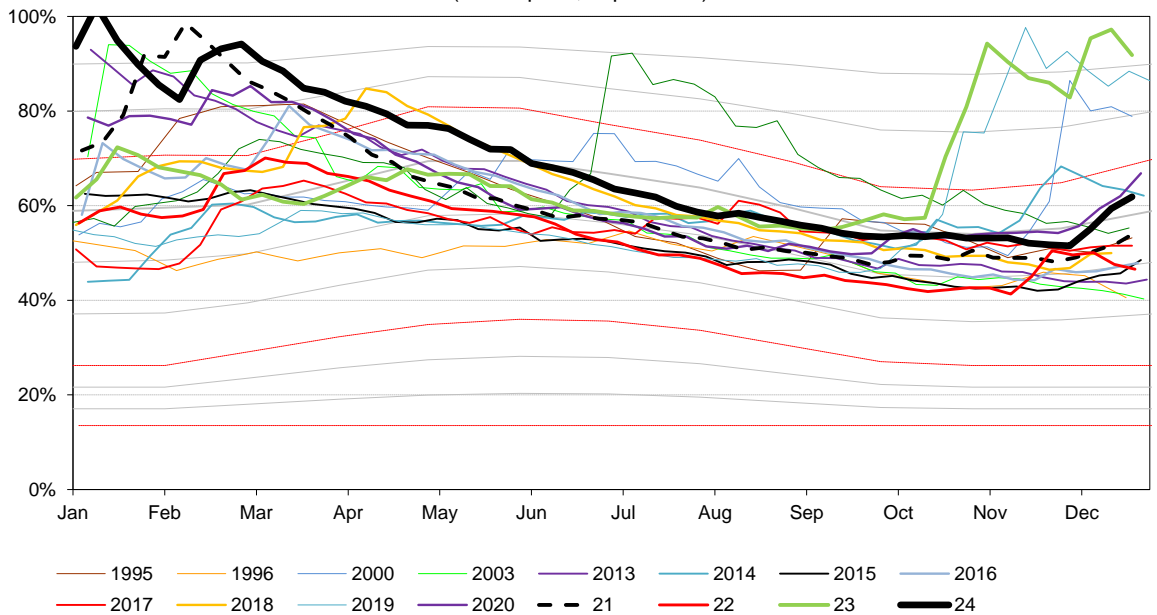


— 1995 — 1996 — 2000 — 2003 — 2013 — 2014 — 2015 — 2016
 — 2017 — 2018 — 2019 — 2020 - - 21 — 22 — 23 — 24

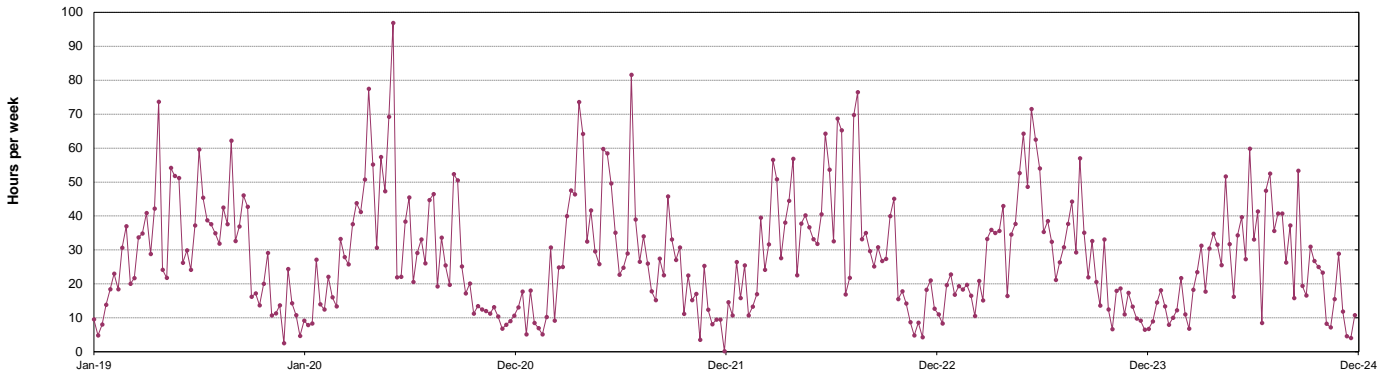
South Reservoir Group
(Sheffield, Barnsley)



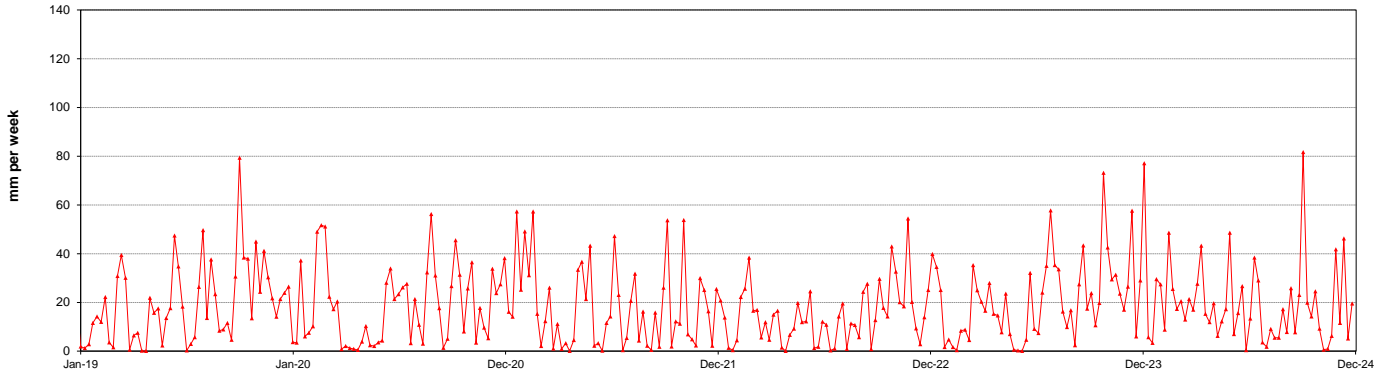
East Reservoir Group
(Hull Aquifer, Tophill Low)



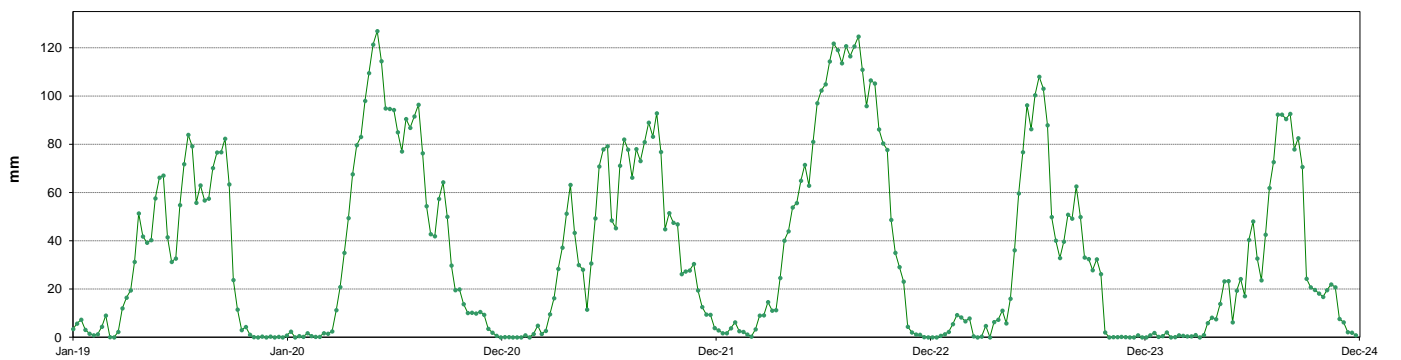
Average Sunshine



Average Rainfall



Soil Moisture Deficit



This page will normally be updated monthly (approx mid month).

This data may be subject to change following routine validation checks.

Where showing a negative value, this is normal at certain sources, due to the imports of water into that source being greater than the volumes abstracted.

Annual licences run from April to March.

Units in Ml

Serial No	Source	Reporting Year	November	Year to date Ml	Run date	
					Annual Limit	% of Annual Limit
02/27/023/332	Ainderby Steeple Boreholes	C	123	1376	1760	78%
03/28/083/010	Armthorpe Boreholes	C	235	2465	3319	74%
03/28/083/012	Austerfield Boreholes	C	224	3920	11615	34%
02/27/022/020	Aysgarth & Newbiggin Springs	C	16	165	341	48%
02/27/012/035	Baitings, Ryburn & Blackhouse reservoirs	C	208	3357	20457	16%
02/27/023/032	Bellerby Borehole and springs near Bellerby	F	66	276	1250	22%
02/27/022/209	Birk Gill & River Burn	C	263	3662	6400	57%
02/27/012/254	Boothwood Reservoir & associated catchwaters	C	340	3426	20457	17%
02/27/10/112	Boshaw Whams Reservoir	C	0	0	55	0%
03/28/083/105	Boston Park Boreholes	C	183	2058	3318	62%
02/27/024/305	Brayton Barff Boreholes	C	0	0	2250	0%
02/26/030/002	Bridlington	C	156	1750	2500	70%
02/27/005/031	Broomhead Reservoir	F	1048	8028	12410	65%
02/26/030/004	Burton Agnes	C	70	830	1000	83%
02/27/018/080	Carlton Hanger Lane Boreholes	C	323	2823	3500	81%
02/27/018/079	Carlton Mill Lane Boreholes	C	170	1691	3800	45%
02/27/019/009	Carr Bottom Reservoir, Burley Woodhead	C	7	52	409	13%
02/27/023/340	Catterick Boreholes	F	179	1557	2920	53%
02/27/027/136	Cayton Carr Lane Boreholes	C	125	1264	3928	32%
02/27/027/163	Cayton Station Road Borehole	C	63	969	2646	37%
02/27/019/137	Chelker Reservoir	C	188	2557	5000	51%
02/27/023/031	Coalsgarth Springs	C	6	83	750	11%
02/27/011/064	Colne Valley Catchwaters	F	-57	1851	5840	32%
02/26/032/126	Cottingham Well	C	928	7091	18184	39%
02/27/018/081	Cowick Boreholes	C	367	4064	5250	77%
02/27/023/046	Cranehow & Downholme Springs	C	0	0	318	0%
02/27/023/030	Crumma, Newsham & Gandale Springs	C	65	791	1364	58%
02/27/005/030	Dale Dyke & Agden Reservoirs	F	603	6853	21412	32%
02/27/012/261	Dean Head & Scammonden	F	-28	912	3650	25%
02/27/19/121	Dib Spring, Hawkswick	C	0	0	27	0%
02/26/032/126	Dunswell Well	C	485	7612	16593	46%
NE/27/025/021	East Ness Boreholes	F	268	2227	5680	39%
02/26/031/087	Elmswell Wold Borehole	C	6	177	1273	14%
02/27/015/045	Embsay Reservoir	C	-22	1698	1846	92%
02/27/016/196	Esholt Sewage Treatment Works	C	0	0	88	0%
02/26/032/124	Etton Boreholes	C	123	1416	5100	28%
03/28/083/012	Finningley Boreholes	C	304	3297	6780	49%
02/27/022/328	Fossdale (High Shaw) Springs	C	9	91	227	40%
02/27/018/120	Goosehouse Boreholes	F	157	2150	3500	61%
02/27/012/043	Gorpley Reservoir	C	0	0	1823	0%
02/27/016/022	Graincliffe Reservoir	F	75	963	2728	35%
02/27/012/037	Green Withens Ringstone Res & catchwater	C	386	4550	20457	22%
02/27/019/051	Greenhow Tunnel (Nidd Aqueduct) Dale Head Intake	C	0	0	214	0%
02/27/019/052	Greenhow Tunnel (Nidd Aqueduct) No.2 Access Shaft	C	0	0	6819	0%
NE/27/019/005	Grimwith Reservoir to Nidd Aqueduct	F	337	1023	3650	28%
02/26/030/003	Haisthorpe Boreholes	C	339	4040	5000	81%
03/28/083/012	Hatfield Boreholes	C	206	1715	3319	52%
03/28/083/100	Hatfield Woodhouse Boreholes	C	0	0	3320	0%
02/27/029/010	Hazel Head Springs	C	49	527	1162	45%
02/27/012/041	Hebden, Luddenden & Hebble Valley Resrs	F	1044	7997	15695	51%
02/27/018/077	Heck Boreholes	C	0	358	2489	14%
03/28/083/012	Highfield Lane Boreholes	C	237	2958	11615	25%
02/27/023/685	Hollin Hill Borehole	F	0	17	45	37%
02/27/010/063	Holmestyes & Digley Reservoirs	F	253	1980	5840	34%
02/27/22/024	Horsehouse Spring, leyburn	C	0	0	33	0%
02/27/027/002	Howe Hill Well	F	78	636	1014	63%
02/26/031/006	Hutton Cranswick	C	39	469	796	59%
02/27/005/012	Ingbirchworth Reservoir & Annat Royd Intake	C	238	1299	3637	36%
02/27/005/202	Ingbirchworth South Borehole	F	4	34	132	26%
02/27/027/058	Irton	C	432	4920	8215	60%
02/27/21/015	John O'Gaunts and Beaverdyke Reservoirs	C	0	0	1909	0%
02/27/014/010	Keighley Moor Reservoir	F	0	282	6951	4%
02/27/025/128	Keld Head Boreholes	C	167	1824	3319	55%
02/26/032/126	Keldgate Boreholes	C	166	1154	5819	20%
02/26/031/002	Kilham	C	9	105	1818	6%
02/27/005/032	Langsett Reservoir	F	903	7934	17155	46%
02/27/022/210	Leighton Reservoir & Spruce Gill stream intake	C	512	5964	13184	45%
03/28/083/107	Littleworth Borehole	C	0	0	1659	0%
02/27/028/270	Loftsome Bridge ASR Borehole No.1	C	0	0	150000	0%
02/27/014/009	Lower Laithe Reservoir	F	209	1513	6951	22%
02/27/005/011	Midhope Reservoir & Knoll Brook Intake	F	274	2268	17155	13%
02/26/034/006	North Newbald	C	0	0	548	0%
03/28/083/012	Nutwell Boreholes	C	140	2449	4983	49%
02/27/019/006	Panorama, Hilltop & Old Reservoirs & Springs	C	24	229	1000	23%
02/27/018/078	Pollington Boreholes	C	170	2157	5000	43%
02/27/014/058	Ponden Reservoir	F	70	920	6951	13%
02/27/016/023	Reva Reservoir, Hawkesworth	C	89	975	1364	71%
02/27/005/029	Rivelin and Redmires Reservoirs	F	497	2150	8030	27%
02/27/028/017	River Derwent at Elvington	F	4391	34957	75000	47%

02/27/028/083	River Derwent at Loftsme Bridge	F	1856	16281	30400	54%
02/27/029/012	River Esk	C	253	2938	7823	38%
02/26/031/047	River Hull & West Beck	C	1076	13561	25000	54%
02/26/032/194	River Hull for Sewer Cleaning	C	0	0	91	0%
02/27/024/078	River Ouse at Acomb	F	881	6615	35000	19%
02/27/024/158	River Ouse at Moor Monkton	F	2530	20680	73000	28%
02/27/022/214	River Ure at Kilgram Bridge	F	320	2795	15000	19%
02/27/020/196	River Wharfe at Arthington	F	9	334	19009	2%
02/27/019/129	River Wharfe at Lobwood	F	1423	15193	27392	55%
03/28/083/012	Rosington Bridge Boreholes	C	0	0	5172	0%
02/27/022/027	Roundhill and Lumley Moor Reservoirs	C	1	6	3500	0%
02/27/005/013	Royd Moor Reservoir & Intakes	C	96	1062	2955	36%
02/27/021/016	Scargill Reservoir	C	60	909	1932	47%
02/27/021/092	Scarhouse & Angram Resvrs with tunnel & catchwater	C	3087	34843	38164	91%
02/27/15/149	Silsden Beck, Stilling-Basin at foot of Silsden Reservoir Emb	C	0	0	10	0%
02/26/032/126	Springhead Well	C	725	8893	13638	65%
02/27/022/021	Stalling Busk & Marsett Springs	C	0	0	33	0%
02/27/022/208	Stock Beck, Carlesmoor Beck & River Laver	C	364	2208	3500	63%
02/27/023/684	Stubbing Nook Borehole	F	0	13	135	10%
03/28/083/012	Thornham Boreholes	C	303	3282	6213	53%
02/27/016/160	Thornton Moor & Stubden Reservoirs	C	315	1612	6214	26%
02/27/012/038	Turvin Clough	C	183	529	4014	13%
02/27/019/054	Upper & Lower Barden Reservoirs	C	392	4714	14223	33%
02/27/020/088	Washburn Valley Reservoirs	C	3760	30099	43800	69%
02/27/015/041	Watersheddles Reservoir	F	192	959	6951	14%
02/27/016/021	Weechee Reservoir	C	13	123	909	14%
02/27/011/065	Wessenden Valley, Blackmoorfoot & Deerhill	F	1031	5902	12410	48%
02/27/023/034	West Stonesdale (Garland Hill) Springs	C	0	0	282	0%
02/27/015/042	Whinney Gill & Jenny Gill Reservoirs	C	4	7	377	2%
02/27/005/026	Winscar, U & L Windleden, Harden & Snailsden	F	610	5877	10140	58%
02/27/012/036	Withens Clough Resr & Catchwater	C	173	1880	3319	57%
02/27/010/011	Yateholme, Riding Wood, Ramsden & Brownhill	F	273	2020	6820	30%

*Royd Moor Reservoir has estimates for Nov as we are waiting for some readings

Licences with Aggregated Annual Quantities	Reporting Year	November	Year to date MI	Annual Limit	% of Annual Limit
Baitings, Ryburn, Boothwood, Green Withens	C	934	11333	20457	55%
Langsett, Midhope	F	1177	10202	17155	59%
Worth Valley	F	471	3674	6951	53%
River Derwent (Elvington, Loftsme)	F	6248	51238	94841	54%
Cayton, Irton	C	620	7153	10700	67%
Selby Boreholes	C/F	1187	13244	25283	52%
Doncaster Wellfield	C	1832	22143	30295	73%
Doncaster Sub Group	C	1414	17620	26049	68%
Austerfield & Highfield Lane	C	460	6878	9956	69%
Hull Groundwater Sources	C	2305	24751	32850	75%

Third Party Agreements (Calendar Year)

Source	Reporting Year	November	Year to date MI	Annual Limit	% of Annual Limit
CRT, Hudds Narrow Canal	C	60	1201	1273	94%
Severn Trent Ladybower Reservoir	C	1515	18994	21550	88%

Reading date: 28-Nov-24

	Reporting Year	Year to date MI	Annual Limit	% of Annual Limit
Wingscar To Langsett Transfer Usage	F	1480	2482	60%