

1. Rainfall

The Yorkshire Region Has Received 128.5% of LTA for September

2. Reservoirs (surface water supply reservoirs not including Hull)

Over the Past Week Our Reservoir Stocks Have Increased By 4.91% To 68.2%

3. Rivers

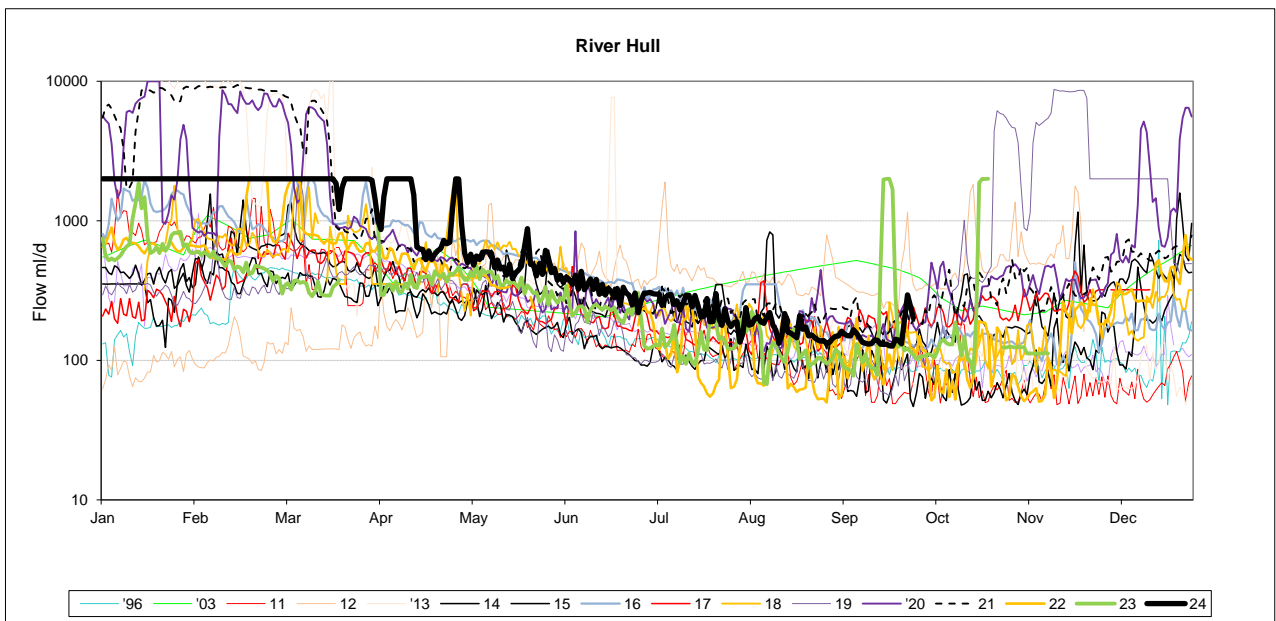
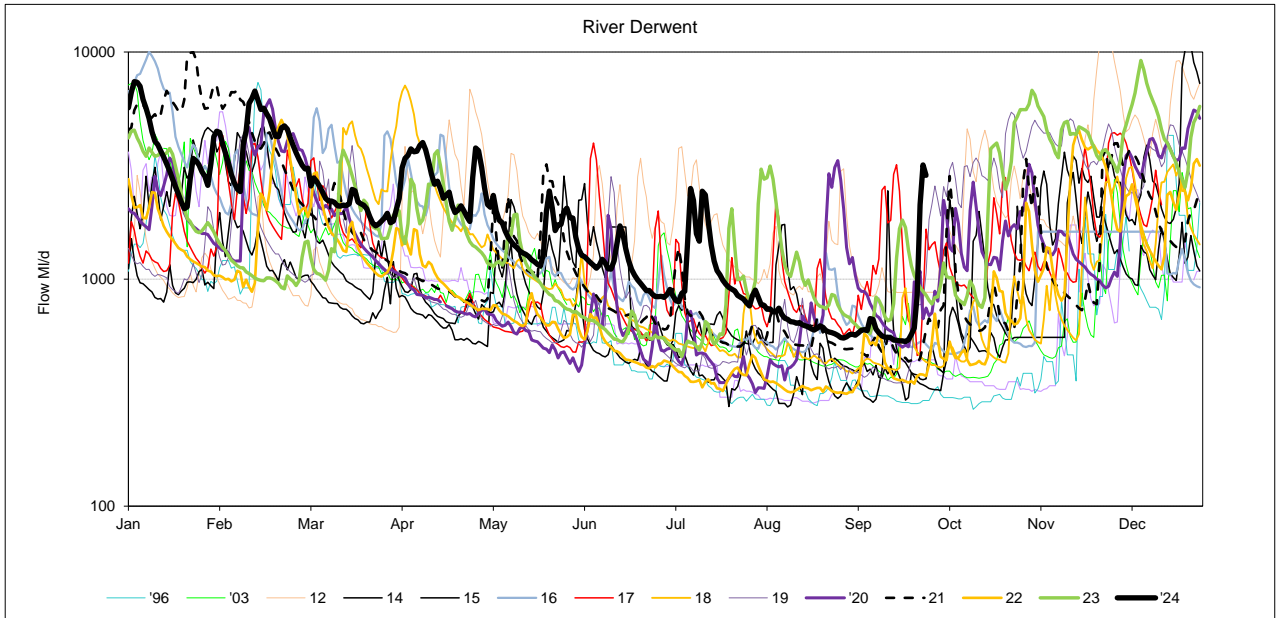
Some of Our Rivers are Below Critical Level

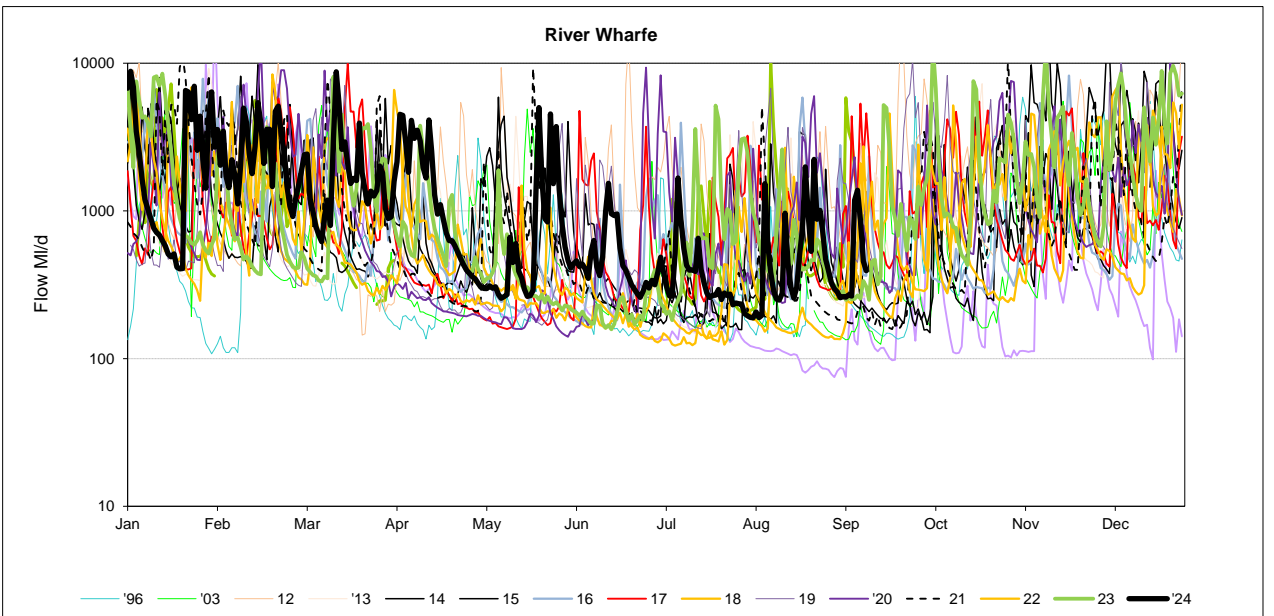
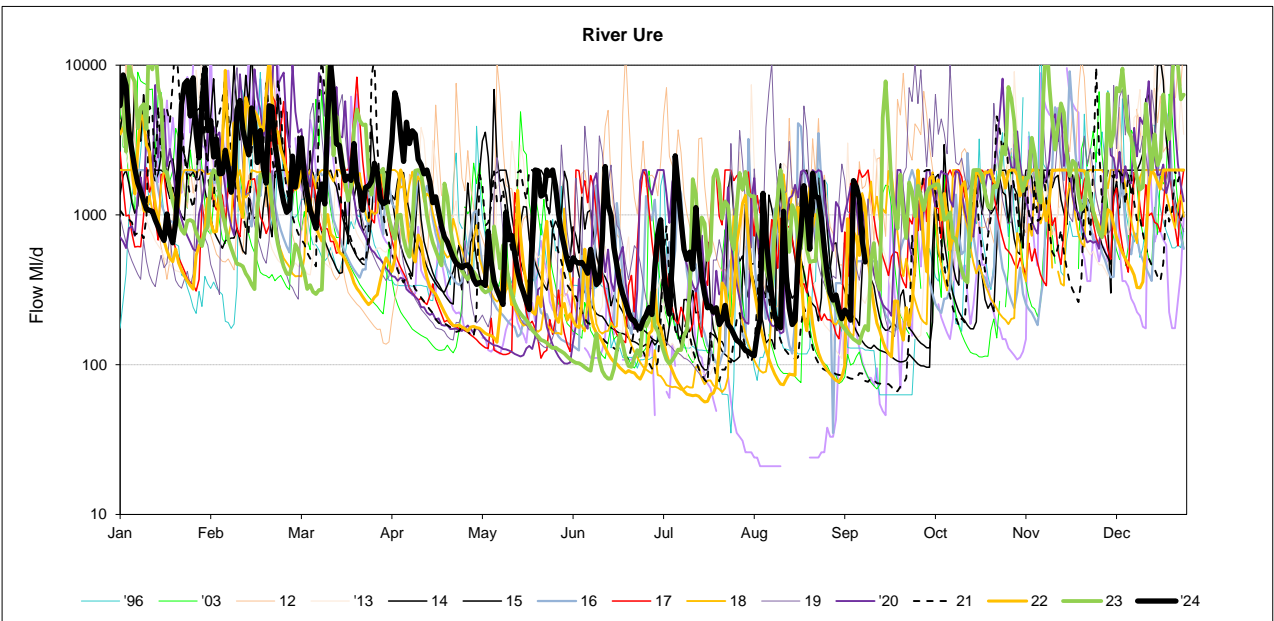
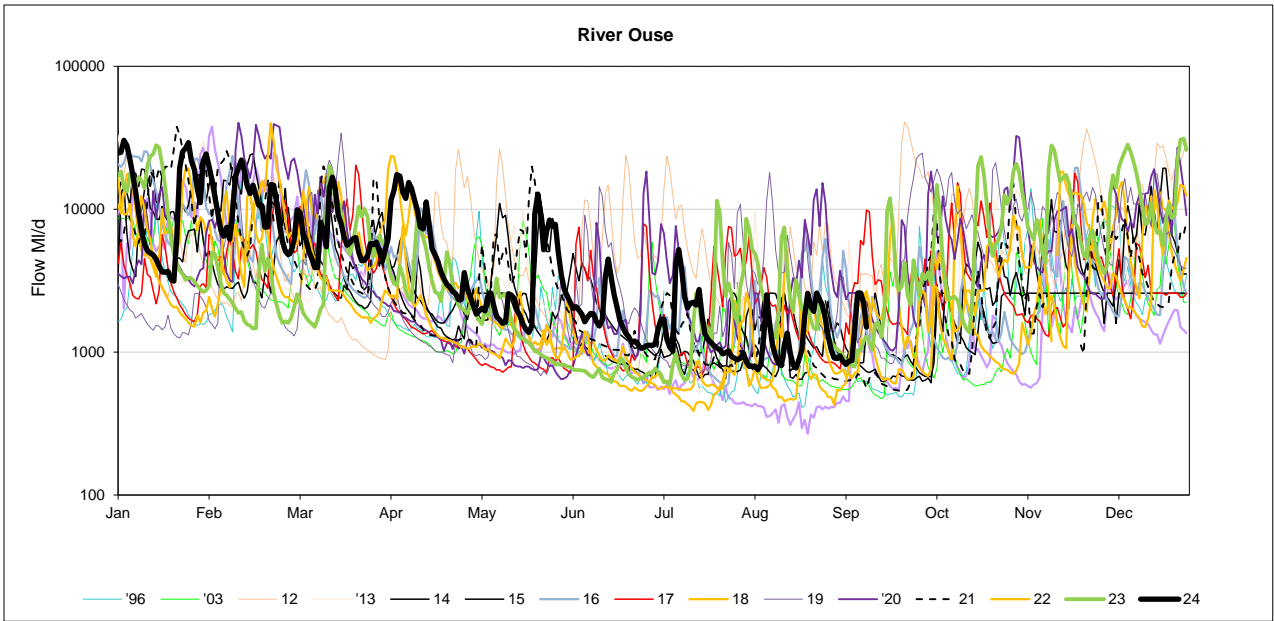
4. Demand

Regional Demand = 1298.1 MI/d (including York)

5. Comments

	Mon 29-Sep	Mon 22-Sep	Mon 15-Sep	Mon 08-Sep	Critical flow bands
Derwent	🟢 2862	🟢 531	🟢 555	🟢 599	305
Hull (using gauged (residual flows) only from 2011)	🟡 201	🟡 126	🟡 132	🟡 149	45 / 159 / 227
Ouse	🟢 2592	🟡 734	🟢 1117	🟡 871	400 / 650 / 1000
Ure	🟢 1169	🟡 163	🟡 283	🟡 198	50 / 163 / 300
Wharfe	🟢 642	🔴 248	🟡 284	🟡 265	252 / 389 / 488 / 580





Yorkshire Region (Met Office)				England/Wales	
Month	mm	LTA	LTA(%)	mm	LTA(%)
February	97	69	141%	140	191%
March	79	59	133%	103	160%
April	95	58	165%	92	153%
May	81	55	148%	85	139%
June	48	72	67%	36	52%
July	74	69	108%	80	113%
August	30	77	39%	54	68%

SOURCE OF DATA : Hydrological Summary of Gt Britain, Institute of Hydrology

Yorkshire Water Services Data			
Rainfall Station	Total September	LTA September	LTA % September
Tophill	NDA	50	0%
Cottingham	NDA	54	0%
Bridlington	NDA	54	0%
Roundhill	176.0	81	217%
Fewston	117.6	77	153%
Osmotherley	116.6	66	177%
Scar House	137.0	114	120%
Watersheddes	127.1	123	103%
Gt Walden Edge	120.1	124	97%
Walshaw Dean	124.4	122	102%
Blackmoorfoot	103.4	100	103%
Ramsden	144.2	124	116%
Redmires	127.7	86	148%
Langsett	116.7	81	144%
YORKSHIRE REGION	128.3	99.8	128%
EAST REGION	116.6	66.0	177%
PENNINE (WEST)	128.3	99.8	128%

NDA= No data available/lack of readings, impacts % LTA for the month

SOURCE OF DATA : YWS RAIN GAUGES- weekly, so monthly data may include previous month or miss start of month

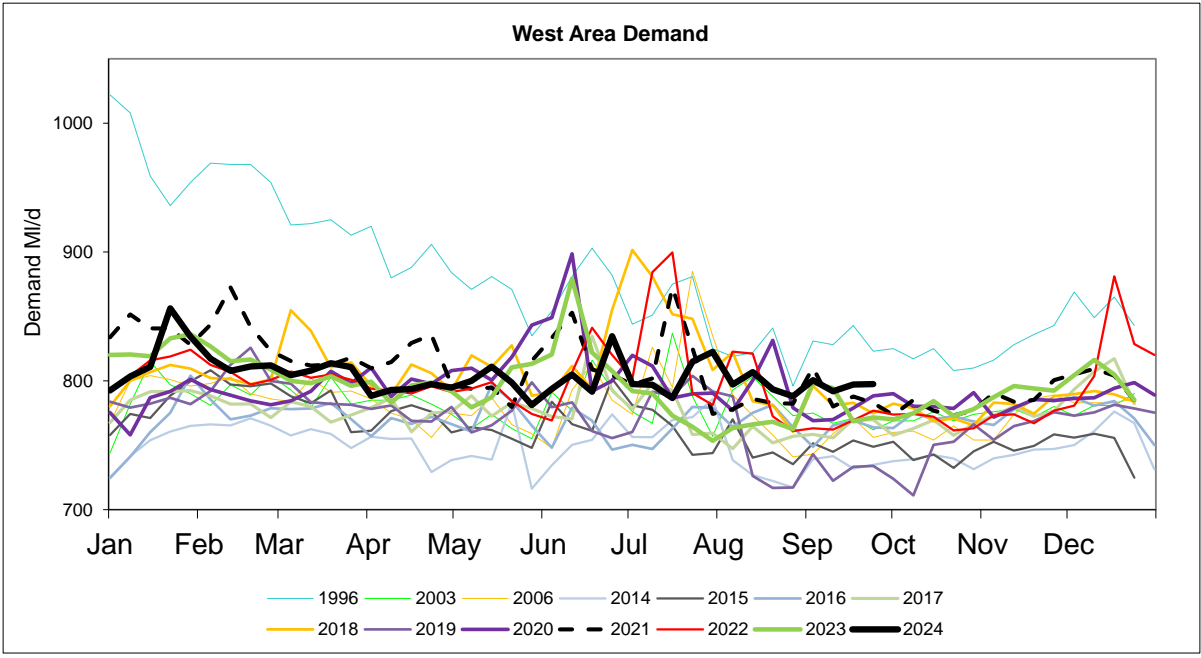
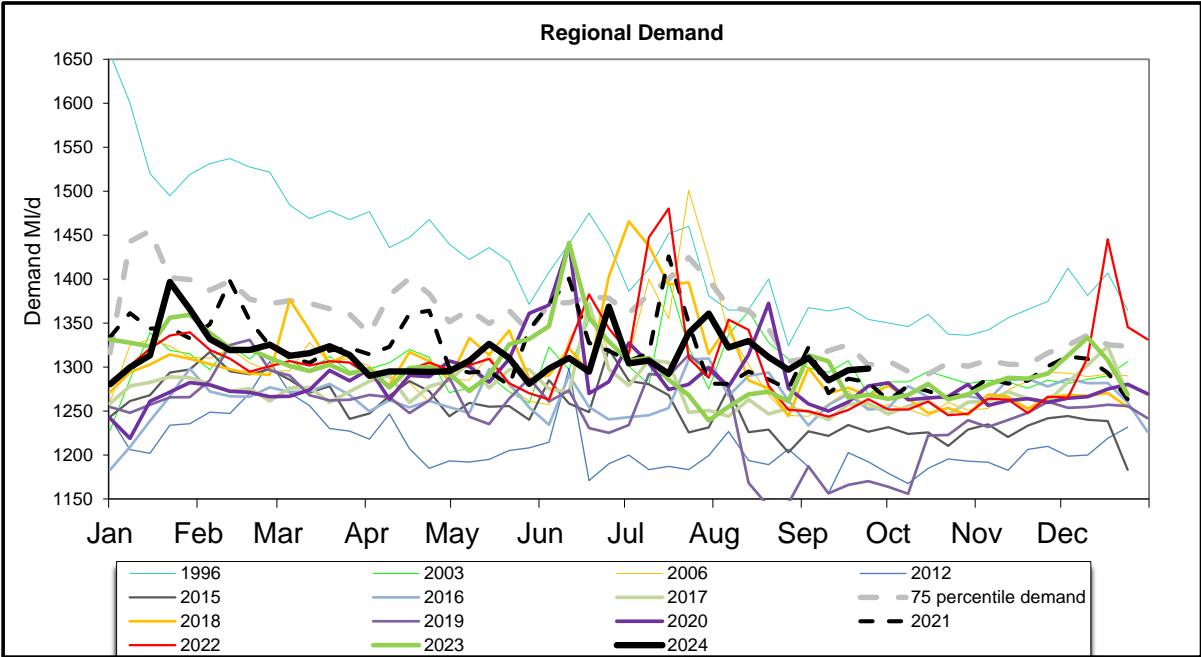
Daily Average Demand MI/d

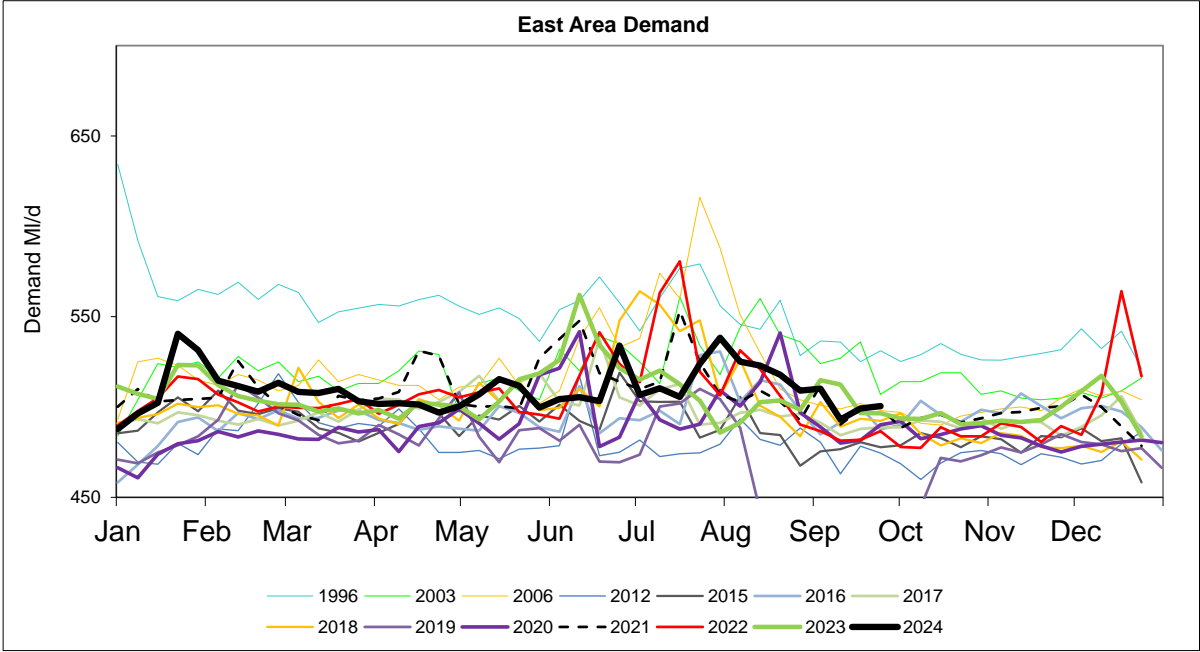
Week Ending Wednesday	L E A S E D S	W A K E + R F I E L D	S E L B Y	H A R R O G A T E	H U L L	M A L L T O N	S H E F F L E Y	D O N C A S T E R	B R A D F O R D	C A L D E R	S K I P T O N	Y O R K A R E A	R E G I O N
28/08/2024	156	73	40	76	173	59	267	81	142	149	36	46	1297
04/09/2024	161	75	42	77	167	59	271	81	143	150	37	46	1311
11/09/2024	161	74	41	75	155	56	267	79	142	150	38	46	1285
18/09/2024	163	76	42	77	155	55	269	80	141	153	37	48	1296
25/09/2024	164	73	40	77	159	52	276	79	140	153	37	48	1298

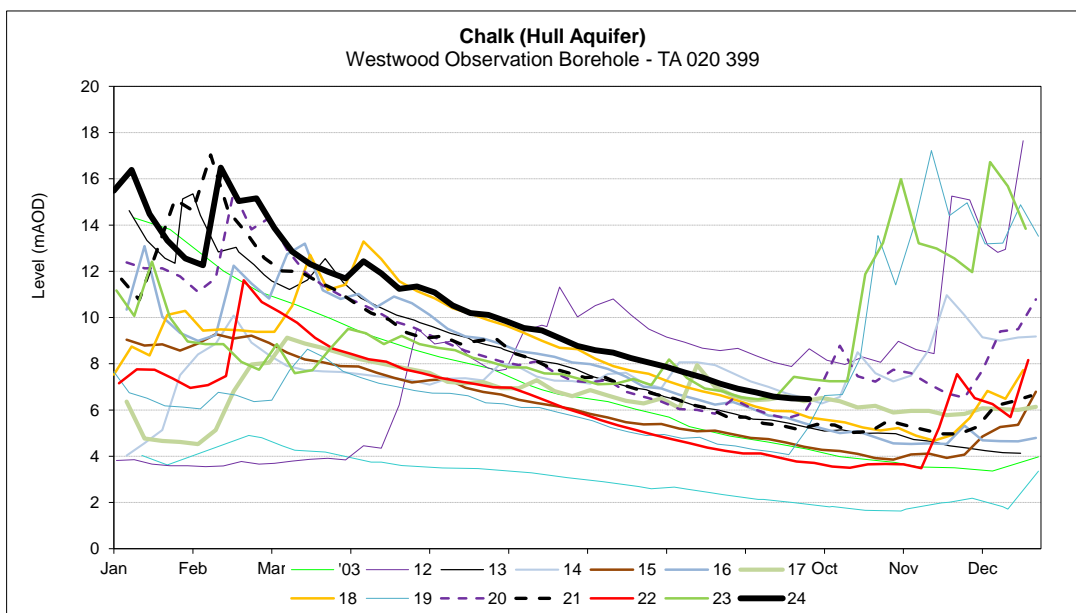
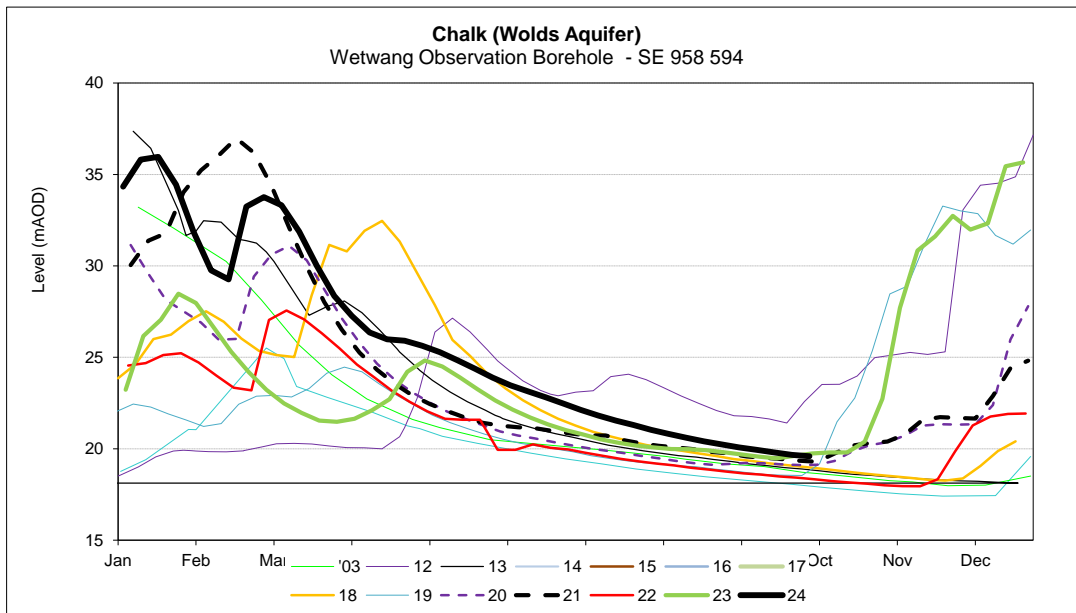
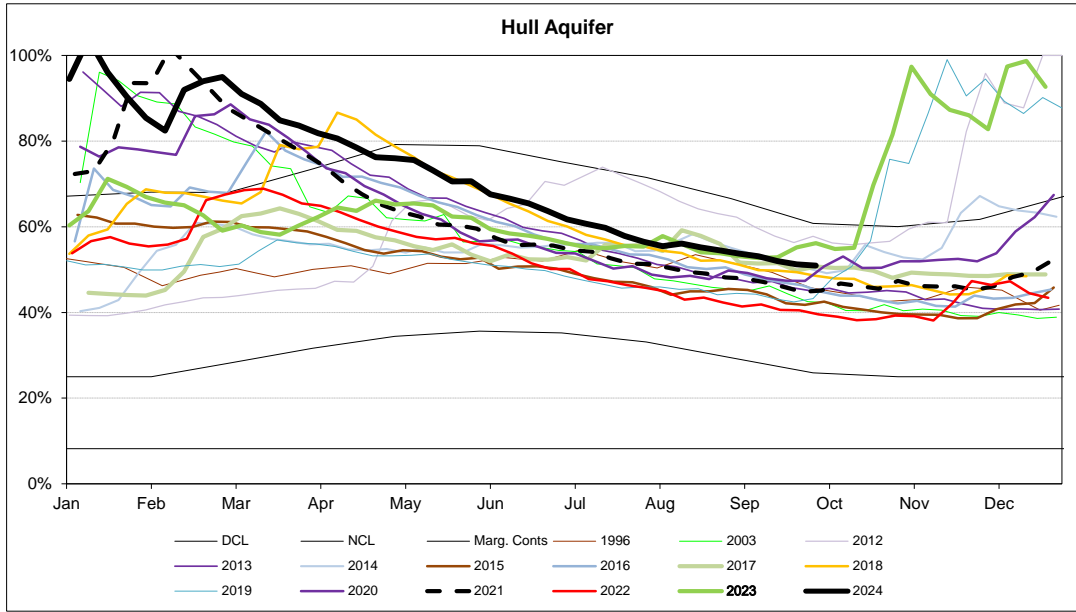
MONTHLY DEMANDS FROM WIS REPORT

Jul-24	161	65	41	74	173	55	279	73	141	148	36	46	1293
Aug-24	158	64	41	74	177	58	280	74	140	149	36	45	1297

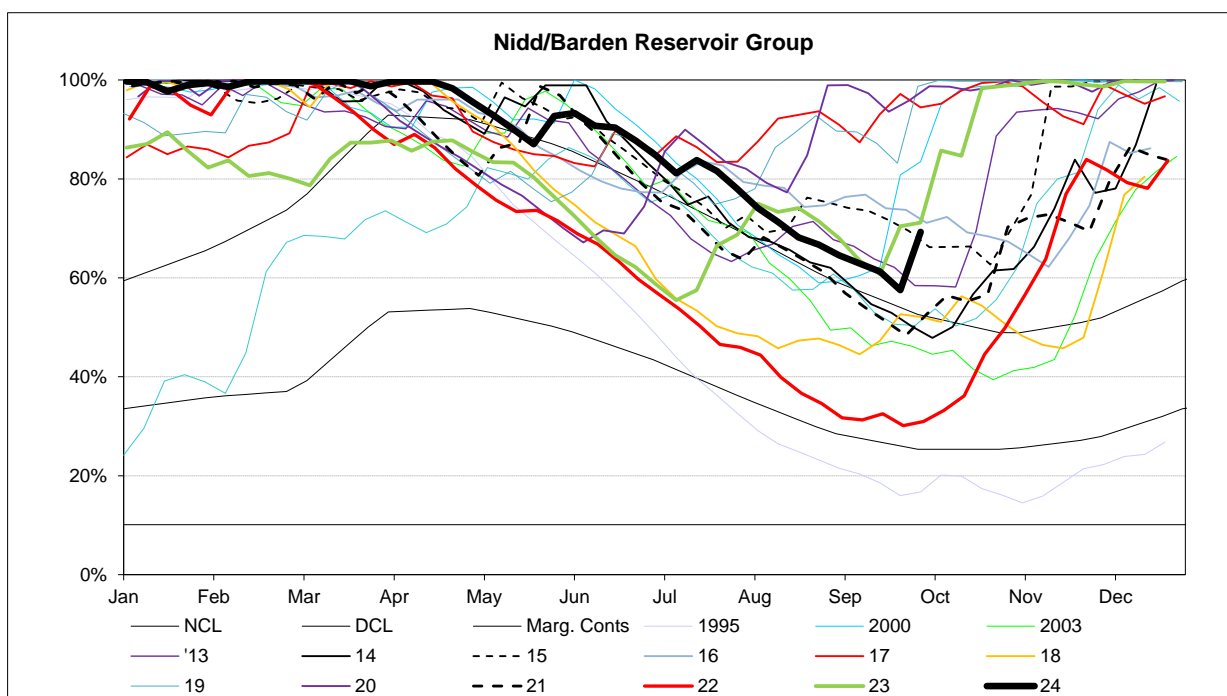
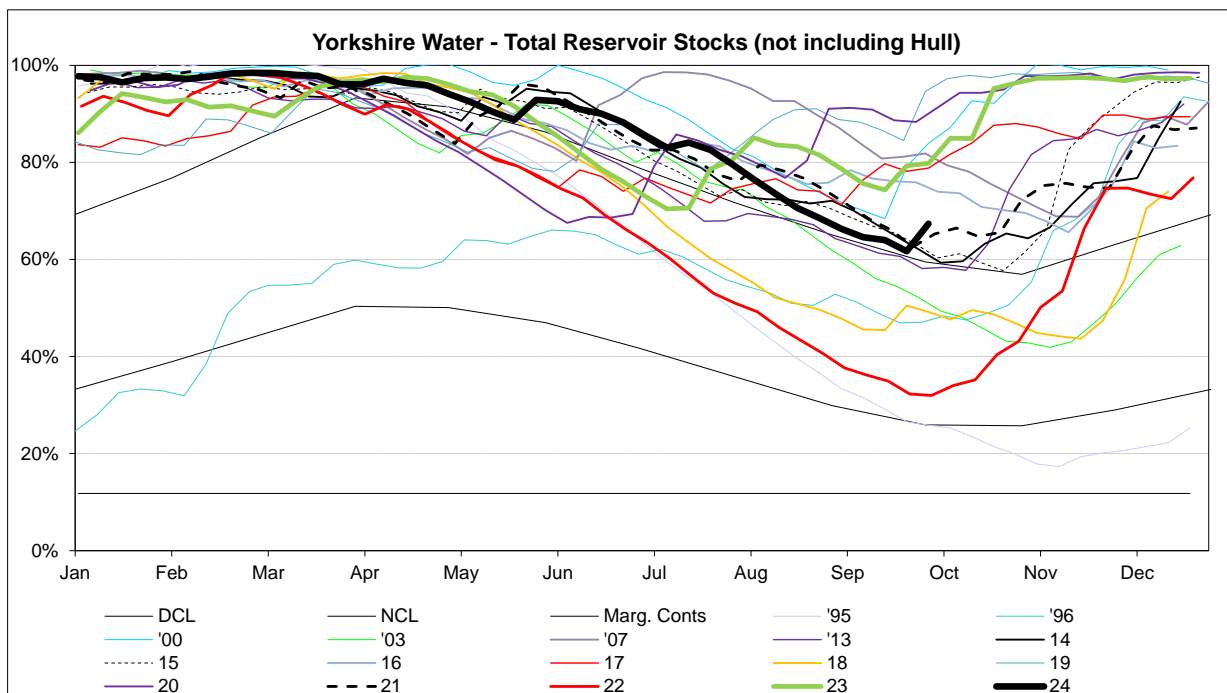
NB Current month demands include some estimates for minor sources and are not exactly comparable with previous months' figures.

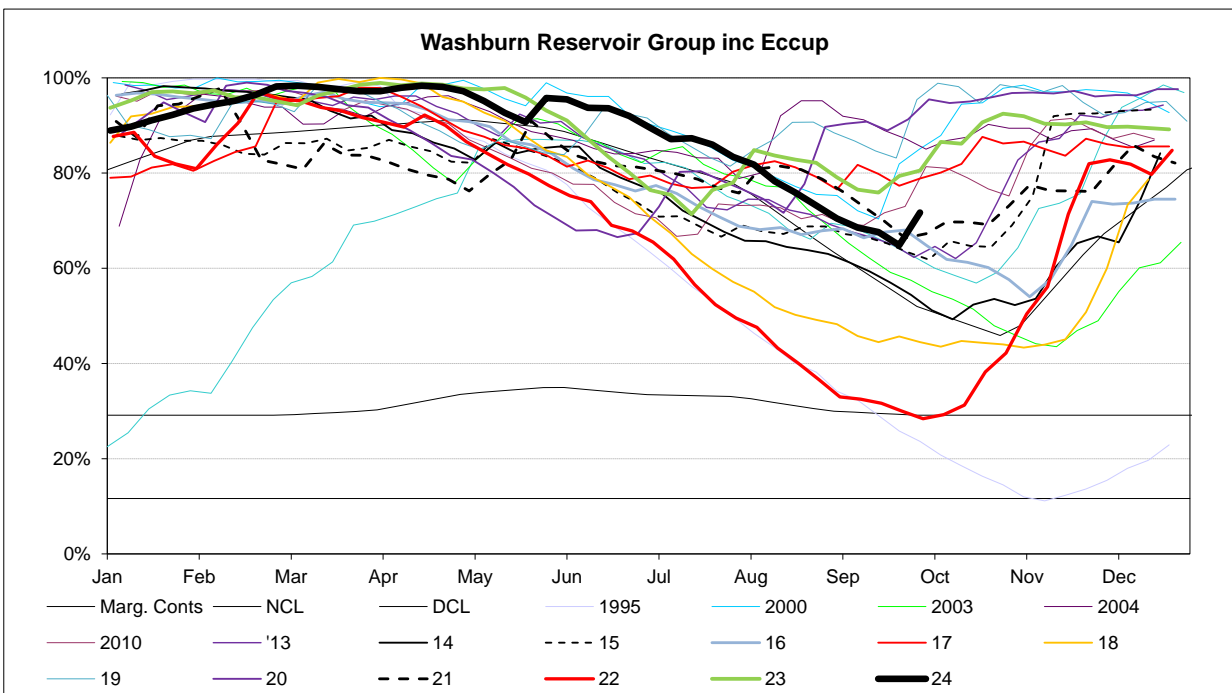
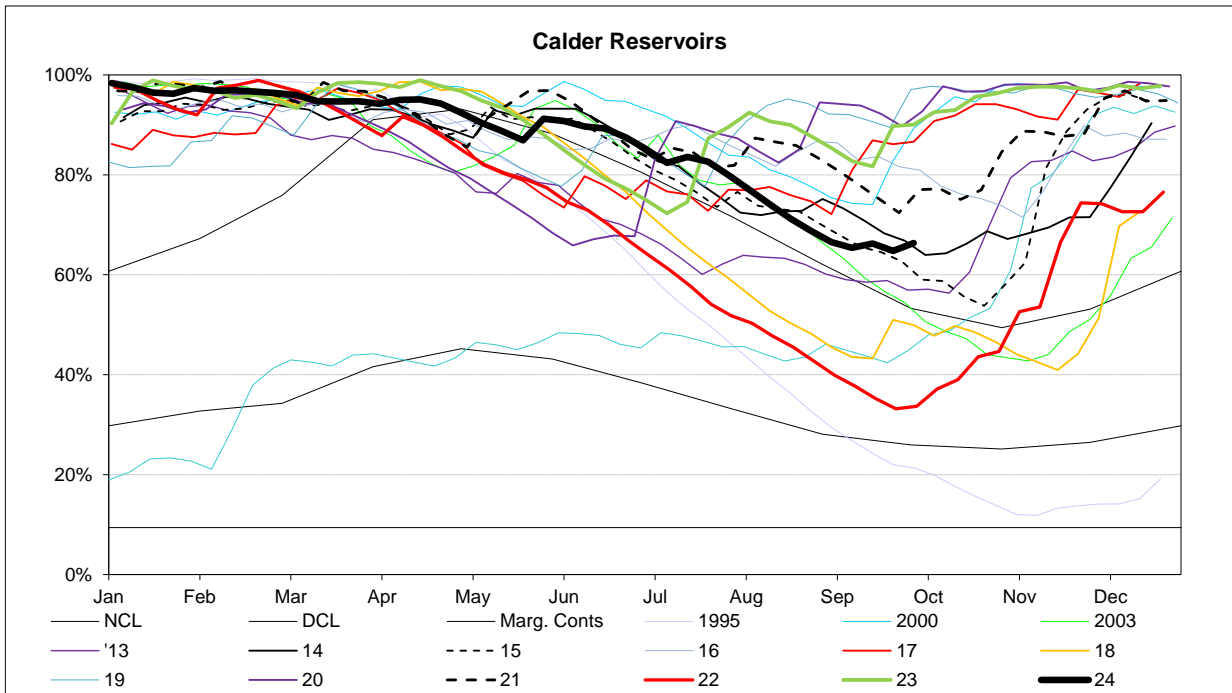




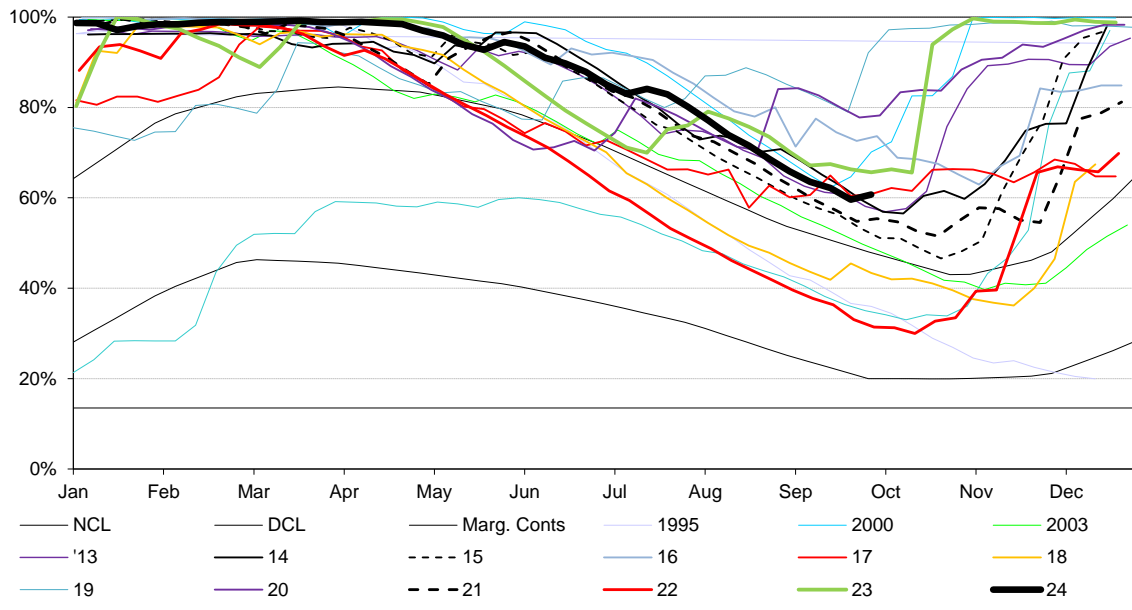


RESERVOIR STOCKS	30/09/2024		% Change	Planned Reservoir Safety Work	Required Drawdown & Duration	
Reservoir Group	% Stocks @	% Change	last week	Reason for Drawdown		
Calderdale (excl Withens Clough)	54.5%	3.5%	-0.9%	Leakage Investigation Access for Tunnel Grouting at Middle IRE Increase Drawdown Capacity	Aug 24 - Oct 24 Apr 24 - Oct 24 May 25 - Sept 25	82.0% 28.0% 21.0%
Boothwood/Ryburn (incl WC)	70.9%	-0.8%	-1.0%			
(Gorpley)	64.3%	4.0%	-0.4%			
Huddersfield	68.9%	1.3%	-2.2%			
Brownhill/Digley	72.4%	3.9%	-1.8%			
Riding Wood	100.0%	15.9%	-11.3%			
Walshaw Dean Lower	32.2%	2.4%	0.9%			
Widdop	36.1%	6.2%	0.1%			
Calder Area Total	66.3%	1.5%	-1.5%			
Nidd/Barden/Chelker	69.3%	11.7%	-3.7%			
Grimwith	68.7%	5.5%	-3.1%			
Worth Valley	81.7%	3.0%	-2.6%			
March Ghyll	89.1%	10.5%	-0.1%			
Ponden	79.4%	3.9%	-3.7%			
Thornton Moor	54.4%	2.1%	-6.4%			
Chelker	93.3%	0.5%	-2.5%			
Hewenden	100.0%	0.0%	0.0%			
North West Area Total	70.5%	7.7%	-3.2%			
Washburn/Eccup Resrs.	71.7%	6.9%	-2.7%	Outlet Channel Repairs Bridge Repairs Inspection of Overflow and Upstream Face	Dates tbc Dates tbc Aug 24 - Oct 24	93.0% TBC 83.0%
Thornton Steward	92.5%	-2.5%	-2.1%			
Leighton/Roundhill	72.1%	16.8%	-2.1%			
Haverah Park	62.7%	-10.7%	19.8%			
Swinsty	82.5%	11.9%	2.3%			
Thruscross	72.4%	8.5%	-4.6%			
Cod Beck	100.0%	24.1%	-4.4%			
North Area Total	72.1%	8.3%	-1.2%			
Don Valley & Winscar	68.7%	1.3%	-2.0%	Damage to Overflow Channel Install Overflow Debris Barrier Overflow Investigation 0.0%	Nov 23 - Oct 24 June 24 - Aug 24 Dates tbc 0.0%	89.0% 95.0% 95.0% 0.0%
Rivelin Valley	91.1%	11.2%	-1.4%			
Little Don	55.1%	5.8%	-2.6%			
Ewden Valley	54.2%	-1.0%	-3.0%			
Loxley Valley	69.5%	1.7%	-2.1%			
Redmires	58.4%	0.2%	-2.9%			
Redmires Upper	52.3%	-1.4%	-4.4%			
Redmires Middle	57.0%	4.0%	-0.5%			
Broomhead	54.2%	-1.0%	-3.0%			
Strines	70.7%	7.2%	-0.9%			
South Area Total	62.7%	2.5%	-2.4%			
Tophill Low	79.9%	-0.2%	1.2%			
Hull Aquifer	50.9%	-0.3%	-0.7%			
East Area Total	53.3%	-0.3%	-0.6%			
Regional Total (DCP) (not inc East Area)	66.5%	4.3%	-2.1%			
YORKSHIRE TOTAL (Supply) (not inc East Area)	68.2%	4.9%	-2.3%			



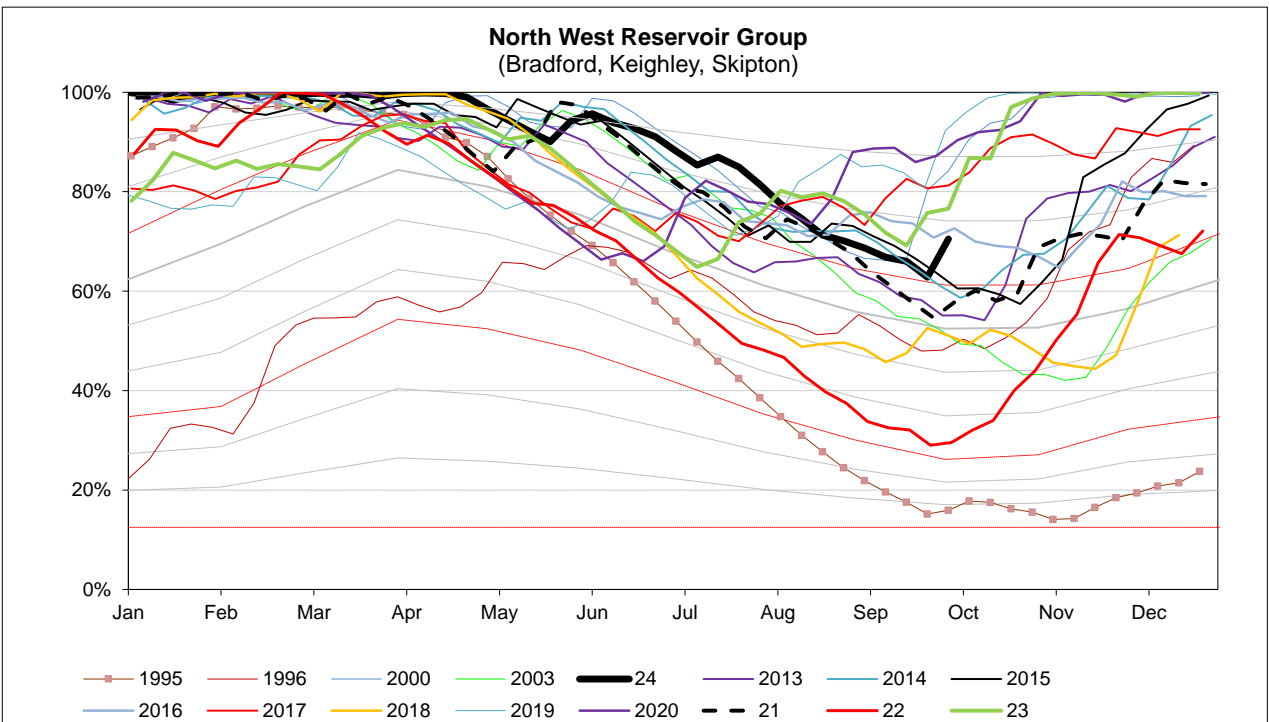
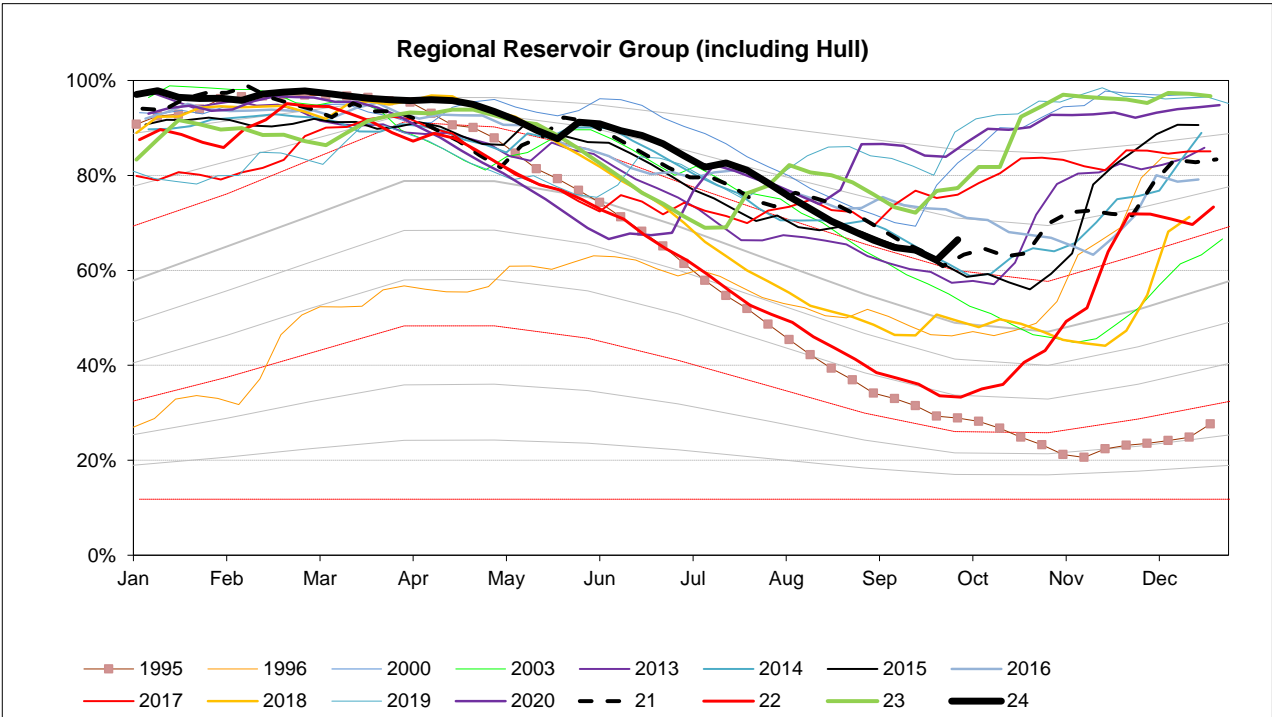


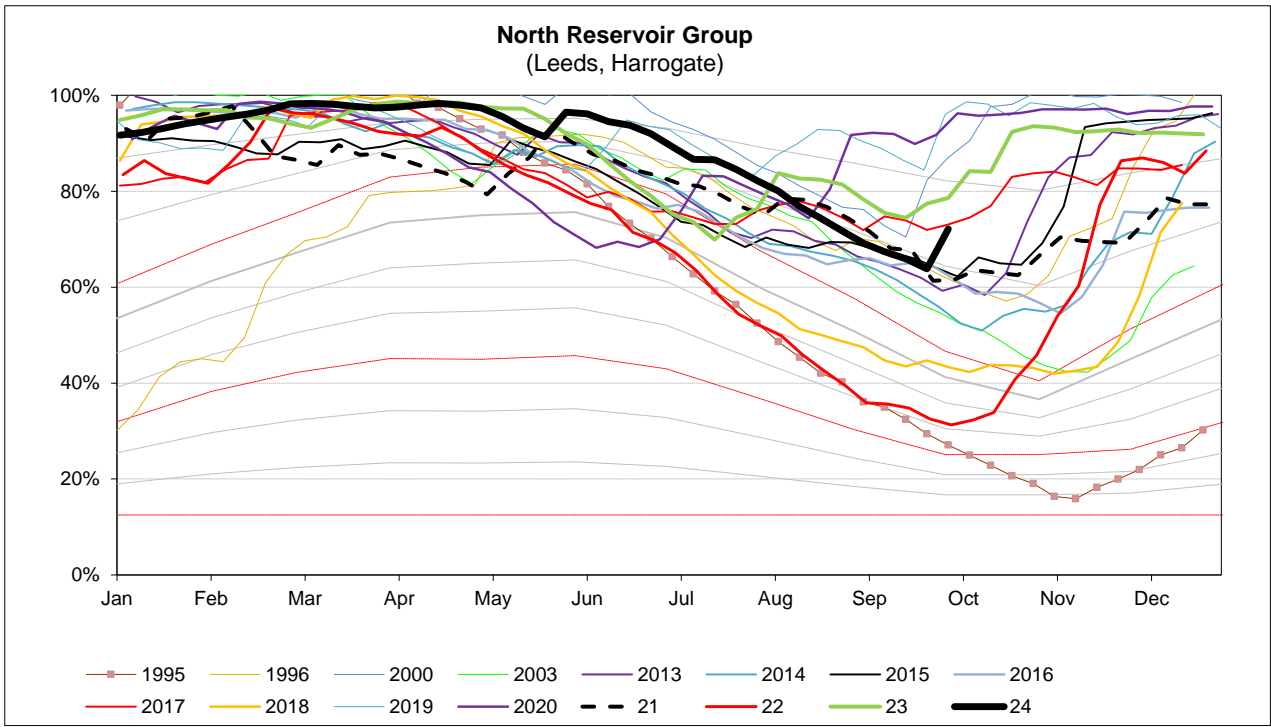
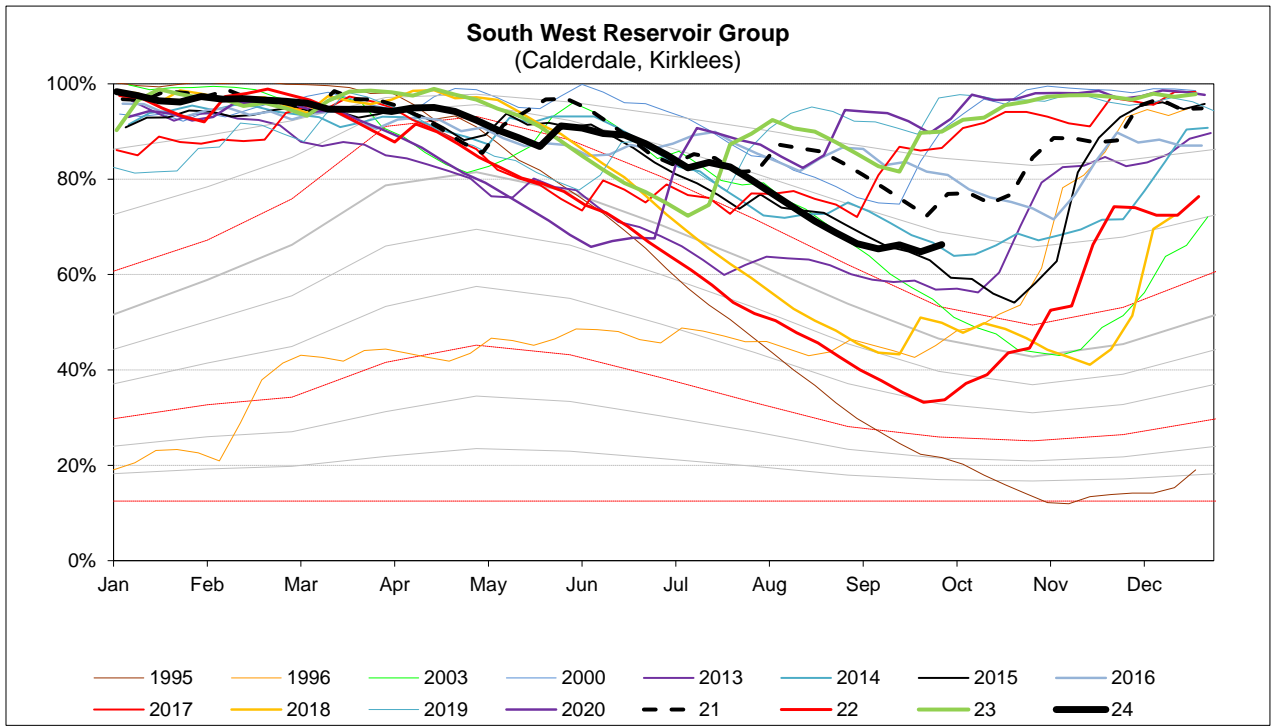
Sheffield & Barnsley Reservoirs

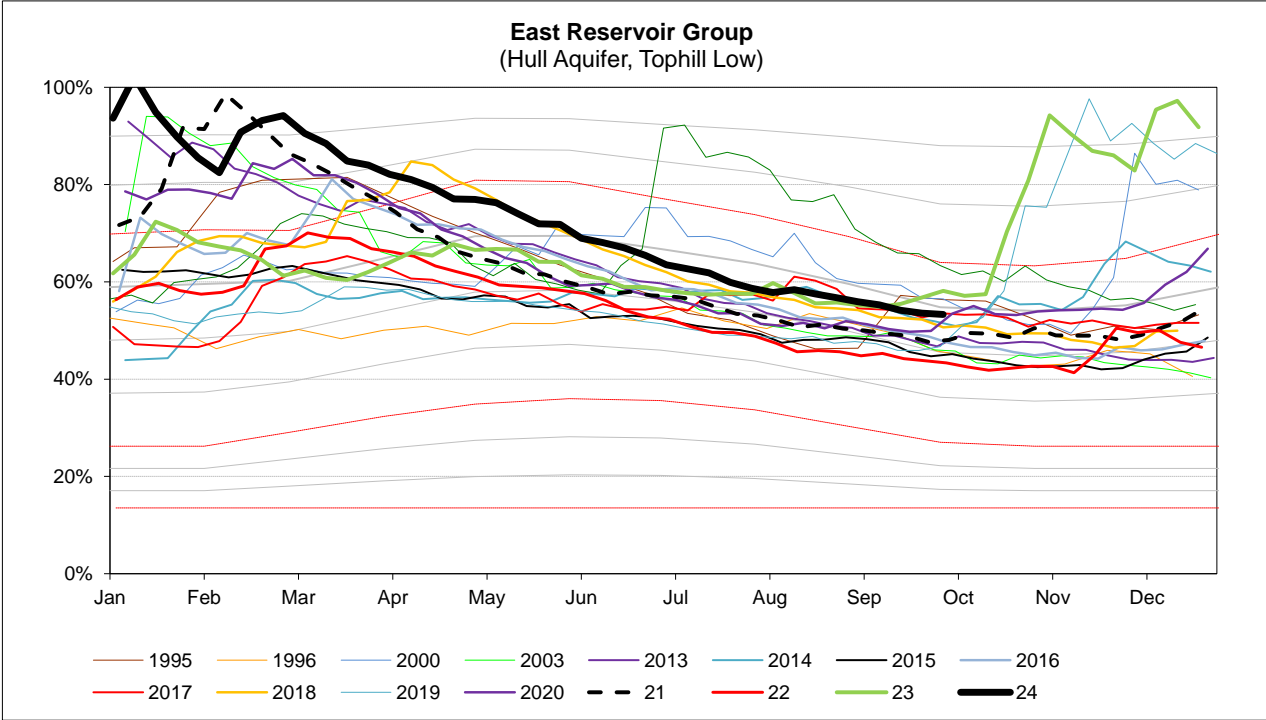
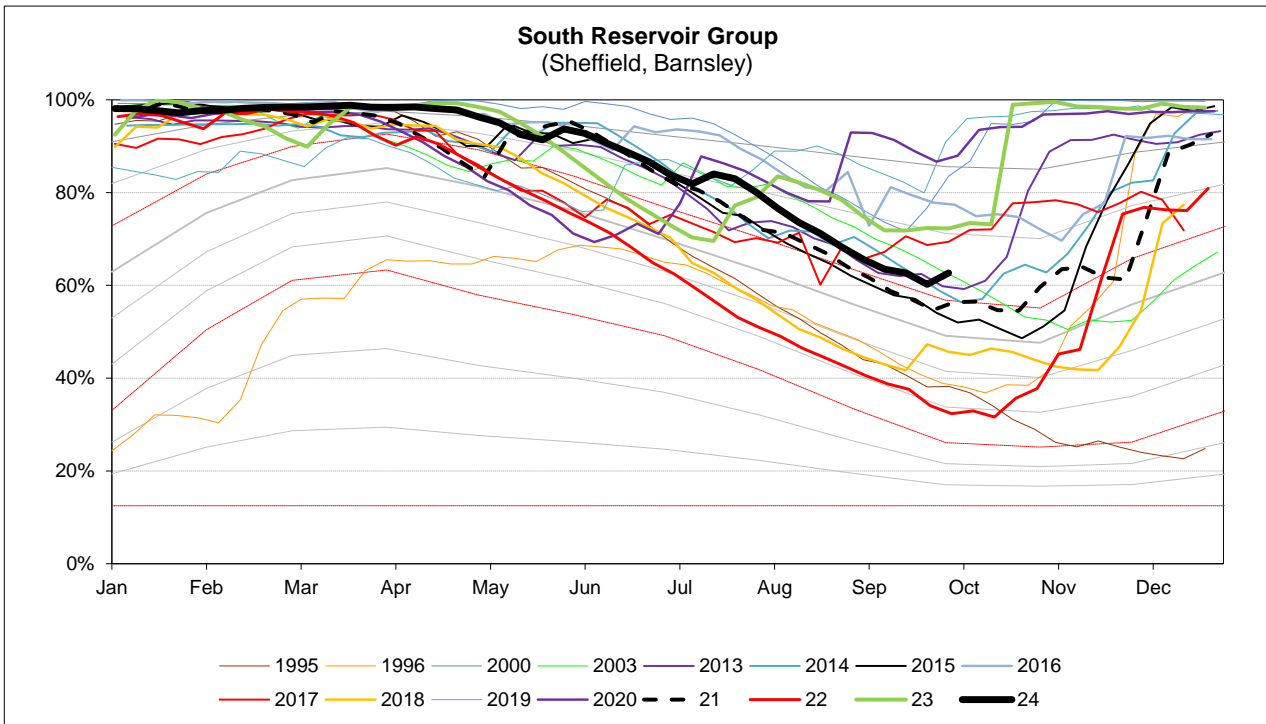


EA Stocks Report	30/09/2024						
	MI	%	% change		MI	%	% change
South West Area Supply Reservoirs				South Area Supply Reservoirs			
Calderdale Group	6066	54.5%	3.5%	Don Valley	1696	81.6%	0.9%
Huddersfield Group	9724	68.8%	1.2%	Little Don	4064	55.1%	5.8%
Brownhill/Digley excl Holmestyes	4071	72.5%	3.8%	Ewden Valley	2676	54.2%	-1.0%
Boothwood/Ryburn	8586	73.4%	-0.9%	Loxley Valley	4780	69.5%	1.7%
				Rivelin	742	91.1%	11.2%
South West Reservoir Group	29205	66.3%	1.5%	Redmires	1623	58.4%	0.2%
Bradford Area Supply Reservoirs				South Reservoir Group	15582	62.7%	2.5%
Gouthwaite	5291	91.1%	46.9%	Winscar Group	6187	66%	1.3%
Grimwith	14959	68.7%	5.5%				
Nidd/Barden/Chelker	13284	69.3%	11.7%	Compensation Reservoirs			
Rombalds/Thornton Group	1656	74.2%	4.0%	Scout Dike	252	36.4%	-1.8%
				Underbank	1929	67.3%	-1.8%
Skipton Area Supply Reservoirs				Morehall	933	42.9%	-2.4%
Embsay	679	93.9%	-1.8%	Damflask	2979	58.4%	-1.9%
Worth Valley Group	2705	81.7%	3.0%				
North West Reservoir Group	33283	70.5%	7.7%	North Area Supply Reservoirs			
				Washburn	16761	71.7%	6.9%
Compensation inc Silsden	1401	59.5%	3.6%	Eccup	4194	59.8%	-1.7%
Gouthwaite	5291	91.1%	46.9%	Leighton/Roundhill	5334	72.1%	16.8%
March Ghyll & Elslack Reservoirs excluded for consistency with stocks predictions in WRAPSIM				Haverah Park	628	62.7%	-10.7%
				Lumley Moor	381	100.0%	10.0%
				Thornton Steward	877	92.5%	-2.5%
East Area Supply Reservoirs							
Tophill Low	1344	79.9%	-0.2%	North Reservoir Group	23982	72.1%	8.3%
Hull Aquifer	9679	50.9%	-0.3%	Lindley Wood Compensation	726	24.9%	-5.6%
East Reservoir Group	11023	53.3%	-0.3%	Regional Reservoir Group	119261	66.5%	4.3%
				(sum of South West, North West, East, South, North & Winscar Reservoirs)			

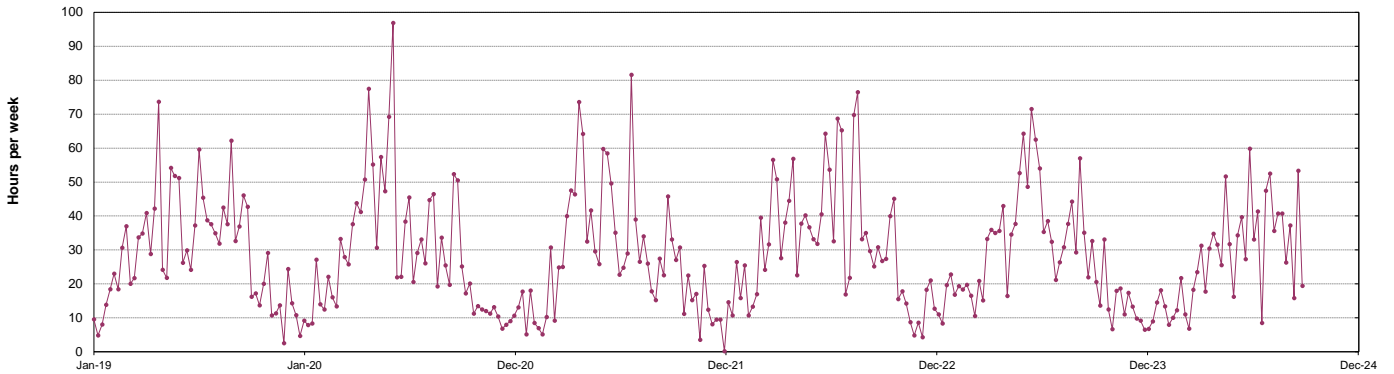
Triggers	
EA early warning (CL4)	Water resources to advise EA on production
Hosepipe Restrictions	When projected falling stocks fall below DCL
Drought Orders	When stocks are below DCL.



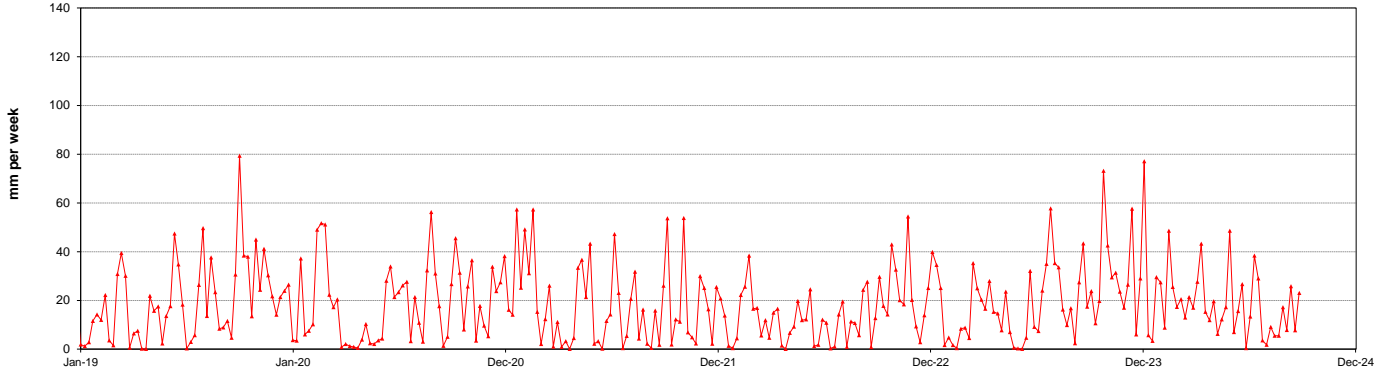




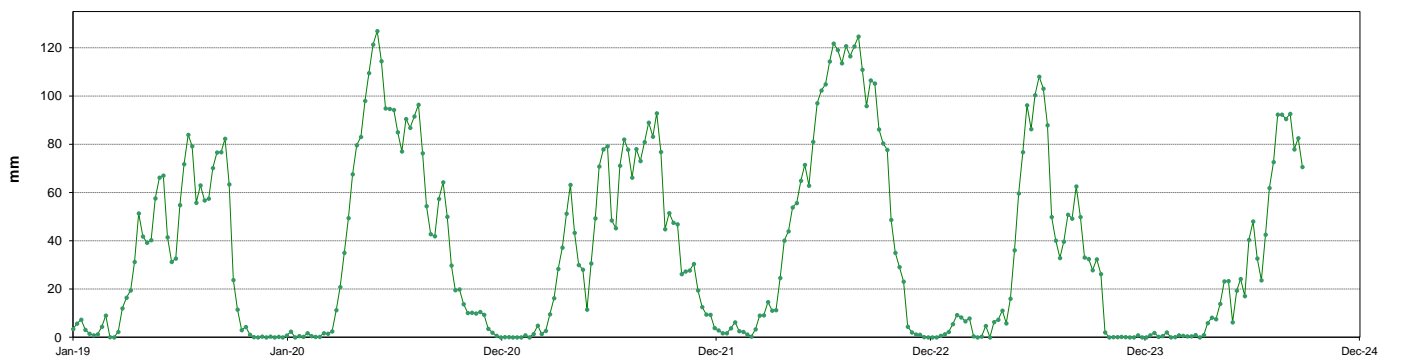
Average Sunshine



Average Rainfall



Soil Moisture Deficit



This page will normally be updated monthly (approx mid month).

This data may be subject to change following routine validation checks.

Where showing a negative value, this is normal at certain sources, due to the imports of water into that source being greater than the volumes abstracted.

Annual licences run from April to March.

Units in MI

Serial No	Source	Reporting Year	45505	Year to date MI	Run date	
					01/09/2024	Annual Limit
02/27/023/332	Ainderby Steeple Boreholes	C	129	1020	1760	58%
03/28/083/010	Armthorpe Boreholes	C	214	1797	3319	54%
03/28/083/012	Austerfield Boreholes	C	408	2909	11615	25%
02/27/022/020	Aysgarth & Newbiggin Springs	C	15	119	341	35%
02/27/012/035	Baitings, Ryburn & Blackhouse reservoirs	C	391	2666	20457	13%
02/27/023/032	Bellerby Borehole and springs near Bellerby	F	54	74	1250	6%
02/27/022/209	Birk Gill & River Burn	C	13	2274	6400	36%
02/27/012/254	Boothwood Reservoir & associated catchwaters	C	349	2409	20457	12%
02/27/10/112	Boshaw Whams Reservoir	C	0	0	55	0%
03/28/083/105	Boston Park Boreholes	C	189	1497	3318	45%
02/27/024/305	Brayton Barff Boreholes	C	0	0	2250	0%
02/26/030/002	Bridlington	C	180	1280	2500	51%
02/27/005/031	Broomhead Reservoir	F	1102	5035	12410	41%
02/26/030/004	Burton Agnes	C	77	605	1000	61%
02/27/018/080	Carlton Hanger Lane Boreholes	C	193	1884	3500	54%
02/27/018/079	Carlton Mill Lane Boreholes	C	164	1248	3800	33%
02/27/019/009	Carr Bottom Reservoir, Burley Woodhead	C	0	21	409	5%
02/27/023/340	Catterick Boreholes	F	204	999	2920	34%
02/27/027/136	Cayton Carr Lane Boreholes	C	68	1013	3928	26%
02/27/027/163	Cayton Station Road Borehole	C	173	627	2646	24%
02/27/019/137	Chelker Reservoir	C	45	2044	5000	41%
02/27/023/031	Coalsgarth Springs	C	8	63	750	8%
02/27/011/064	Colne Valley Catchwaters	F	439	1582	5840	27%
02/26/032/126	Cottingham Well	C	711	4969	18184	27%
02/27/018/081	Cowick Boreholes	C	376	2950	5250	56%
02/27/023/046	Cranehow & Downholme Springs	C	0	0	318	0%
02/27/023/030	Crumma, Newsham & Gandale Springs	C	67	585	1364	43%
02/27/005/030	Dale Dyke & Agden Reservoirs	F	984	4346	12410	35%
02/27/012/261	Dean Head & Scammdon	F	216	779	3650	21%
02/27/19/121	Dib Spring, Hawkswick	C	0	0	27	0%
02/26/032/126	Dunswell Well	C	822	5817	16593	35%
NE/27/025/021	East Ness Boreholes	F	305	1419	5680	25%
02/26/031/087	Elmswell Wold Borehole	C	36	138	1273	11%
02/27/015/045	Embsay Reservoir	C	13	1544	1846	84%
02/27/016/196	Esholt Sewage Treatment Works	C	0	0	88	0%
02/26/032/124	Etton Boreholes	C	173	996	5100	20%
03/28/083/012	Finningley Boreholes	C	309	2424	6780	36%
02/27/022/328	Fossdale (High Shaw) Springs	C	8	68	227	30%
02/27/018/120	Goosehouse Boreholes	F	314	1613	3500	46%
02/27/012/043	Gorpley Reservoir	C	0	0	1823	0%
02/27/016/022	Graincliffe Reservoir	F	35	560	2728	21%
02/27/012/037	Green Withens Ringstone Res & catchwater	C	403	3377	20457	17%
02/27/019/051	Greenhow Tunnel (Nidd Aqueduct) Dale Head Intake	C	0	0	214	0%
02/27/019/052	Greenhow Tunnel (Nidd Aqueduct) No.2 Access Shaft	C	0	0	6819	0%
NE/27/019/005	Grimwith Reservoir to Nidd Aqueduct	F	187	554	3650	15%
02/26/030/003	Haithorpe Boreholes	C	401	2991	5000	60%
03/28/083/012	Hatfield Boreholes	C	183	1110	3319	33%
03/28/083/100	Hatfield Woodhouse Boreholes	C	0	0	3320	0%
02/27/029/010	Hazel Head Springs	C	45	390	1162	34%
02/27/012/041	Hebden, Luddenden & Hebble Valley Resrs	F	879	5491	15695	35%
02/27/018/077	Heck Boreholes	C	0	358	2489	14%
03/28/083/012	Highfield Lane Boreholes	C	239	2252	11615	19%
02/27/023/685	Hollin Hill Borehole	F	4	11	45	25%
02/27/010/063	Holmestyes & Digley Reservoirs	F	242	1246	5840	21%
02/27/22/024	Horsehouse Spring, leyburn	C	0	0	33	0%
02/27/027/002	Howe Hill Well	F	84	399	1014	39%
02/26/031/006	Hutton Cranswick	C	47	343	796	43%
02/27/005/012	Ingbirchworth Reservoir & Annat Royd Intake	C	-104	782	3637	21%
02/27/005/202	Ingbirchworth South Borehole	F	4	21	132	16%
02/27/027/058	Irton	C	488	3596	8215	44%
02/27/21/015	John O'Gaunts and Beaverdyke Reservoirs	C	0	0	1909	0%
02/27/014/010	Keighley Moor Reservoir	F	34	236	6951	3%
02/27/025/128	Keld Head Boreholes	C	182	1314	3319	40%
02/26/032/126	Keldgate Boreholes	C	101	984	5819	17%
02/26/031/002	Kilham	C	1	93	1818	5%
02/27/005/032	Langsett Reservoir	F	807	5545	17155	32%
02/27/022/210	Leighton Reservoir & Spruce Gill stream intake	C	709	5149	13184	39%
03/28/083/107	Littleworth Borehole	C	0	0	1659	0%
02/27/028/270	Loftsome Bridge ASR Borehole No.1	C	0	0	750	0%
02/27/014/009	Lower Laithe Reservoir	F	165	1016	6951	15%
02/27/005/011	Midhope Reservoir & Knoll Brook Intake	F	245	1559	17155	9%
02/26/034/006	North Newbald	C	0	0	1137	0%
03/28/083/012	Nutwell Boreholes	C	238	1925	4983	39%
02/27/019/006	Panorama, Hilltop & Old Reservoirs & Springs	C	17	153	1000	15%
02/27/018/078	Pollington Boreholes	C	157	1586	5000	32%
02/27/014/058	Ponden Reservoir	F	200	594	6951	9%
02/27/016/023	Reva Reservoir, Hawkesworth	C	-17	937	1364	69%
02/27/005/029	Rivelin and Redmires Reservoirs	F	153	998	8030	12%
02/27/028/017	River Derwent at Elvington	F	4860	21651	75000	29%
02/27/028/083	River Derwent at Loftsome Bridge	F	2317	10485	30400	34%
02/27/029/012	River Esk	C	315	2149	7823	27%
02/26/031/047	River Hull & West Beck	C	1384	9657	25000	39%
02/26/032/194	River Hull for Sewer Cleaning	C	0	0	91	0%
02/27/024/078	River Ouse at Acomb	F	855	4086	35000	12%

02/27/024/158	River Ouse at Moor Monkton	C	2477	19284	73000	26%
02/27/022/214	River Ure at Kilgram Bridge	C	524	2129	15000	14%
02/27/020/196	River Wharfe at Arthington	F	5	38	19009	0%
02/27/019/129	River Wharfe at Lobwood	F	2455	10196	27392	37%
03/28/083/012	Rossington Bridge Boreholes	C	0	0	5172	0%
02/27/022/027	Roundhill and Lumley Moor Reservoirs	C	0	5	3500	0%
02/27/005/013	Royd Moor Reservoir & Intakes	C	84	789	2955	27%
02/27/021/016	Scargill Reservoir	C	91	677	1932	35%
02/27/021/092	Scarhouse & Angram Resvrs with tunnel & catchwater	C	3233	25491	38164	67%
02/27/15/149	Silsden Beck, Stilling-Basin at foot of Silsden Reservoir Embankment	C	0	0	10	0%
02/26/032/126	Springhead Well	C	599	6858	13638	50%
02/27/022/021	Stalling Busk & Marsett Springs	C	0	0	33	0%
02/27/022/208	Stock Beck, Carlesmoor Beck & River Laver	C	0	822	3500	23%
02/27/023/684	Stubbing Nook Borehole	F	10	13	135	10%
03/28/083/012	Thornham Boreholes	C	306	2383	6213	38%
02/27/016/160	Thornton Moor & Stubden Reservoirs	C	247	754	6214	12%
02/27/012/038	Turvin Clough	C	0	73	4014	2%
02/27/019/054	Upper & Lower Barden Reservoirs	C	527	3513	14223	25%
02/27/020/088	Washburn Valley Reservoirs	C	2598	22094	43800	50%
02/27/015/041	Watersheddes Reservoir	F	68	448	6951	6%
02/27/016/021	Weecher Reservoir	C	0	92	909	10%
02/27/011/065	Wessenden Valley, Blackmoorfoot & Deerhill	F	567	3405	12410	27%
02/27/023/034	West Stonesdale (Garland Hill) Springs	C	0	0	282	0%
02/27/015/042	Whinney Gill & Jenny Gill Reservoirs	C	0	88	377	23%
02/27/005/026	Winscar, U & L Windleden, Harden & Snailsden	F	942	3747	10140	37%
02/27/012/036	Withens Clough Resr & Catchwater	C	176	1343	3319	40%
02/27/010/011	Yateholme, Riding Wood, Ramsden & Brownhill	F	198	1214	6820	18%

Licences with Aggregated Annual Quantities			45505	Year to date MI	Annual Limit	% of Annual Limit
Baitings, Ryburn, Boothwood, Green Withens	C		1143	8451	20457	41%
Langsett, Midhope	F		1052	7104	17155	41%
Worth Valley	F		468	2293	6951	33%
River Derwent (Elvington, Loftsome)	F		7178	32136	94841	34%
Cayton, Irton	C		729	5235	10700	49%
Selby Boreholes	C/F		1205	9640	25283	38%
Doncaster Wellfield	C		2085	16298	30295	54%
Doncaster Sub Group	C		1682	13003	26049	50%
Austerfield & Highfield Lane	C		647	5161	9956	52%
Hull Groundwater Sources	C		2234	18628	32850	57%

Third Party Agreements (Calendar Year)

Source	Reporting Year	45505	Year to date MI	Annual Limit	% of Annual Limit	
CRT, Hudds Narrow Canal	C		243	822	1273	65%
Severn Trent Ladybower Reservoir	C		1570	14393	21550	67%

Reading date: 04-Sep-24

	Reporting Year	Year to date MI	Annual Limit	% of Annual Limit
Winscar To Langsett Transfer Usage	F	696	2482	28%