

WATER SITUATION REPORT

1. Rainfall

The Yorkshire Region has received 18.1% of LTA for August

2. Reservoirs (surface water supply reservoirs not including Hull)

Over the Past Week Our Reservoir Stocks Have Decreased By -3.20% To 35.9%

3. Rivers

All of Our Rivers are Below Critical Levels

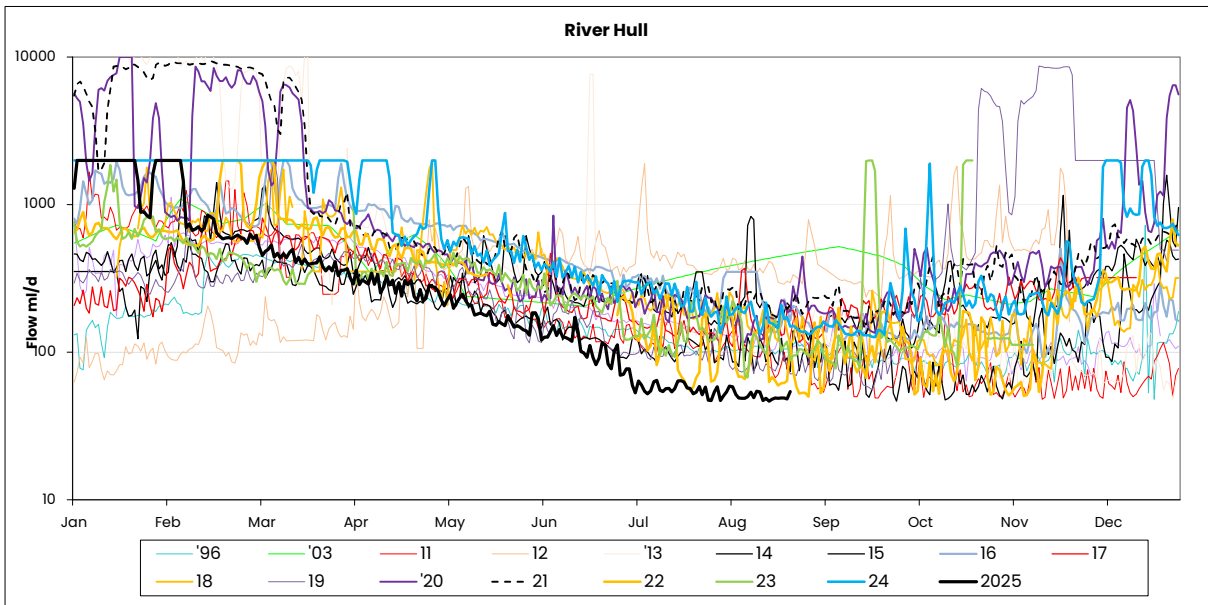
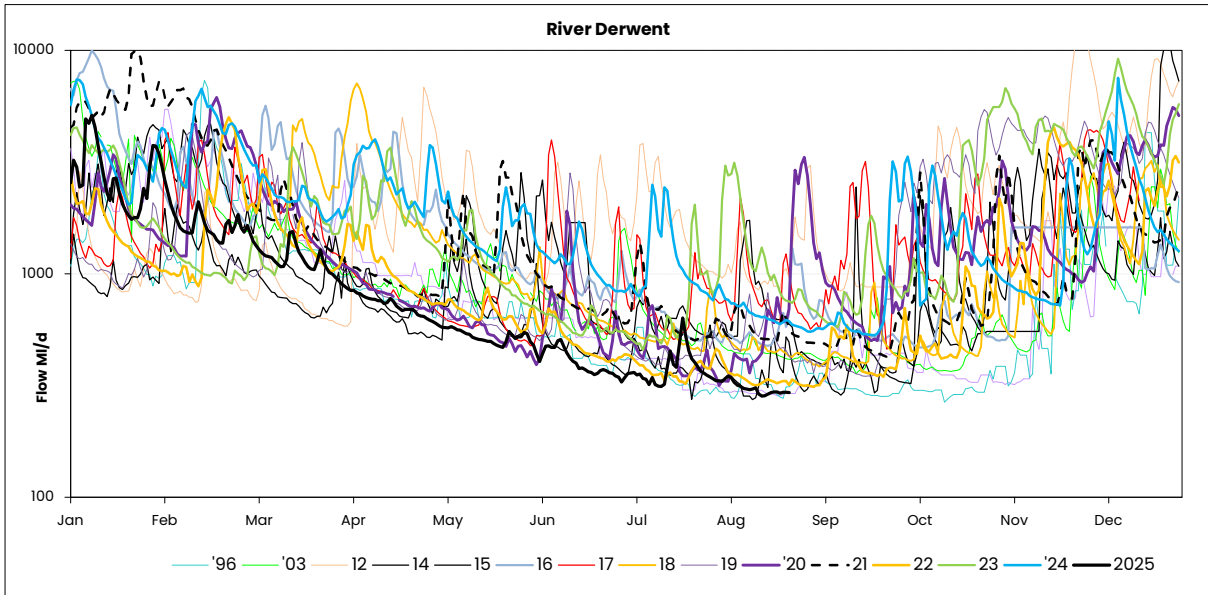
4. Demand

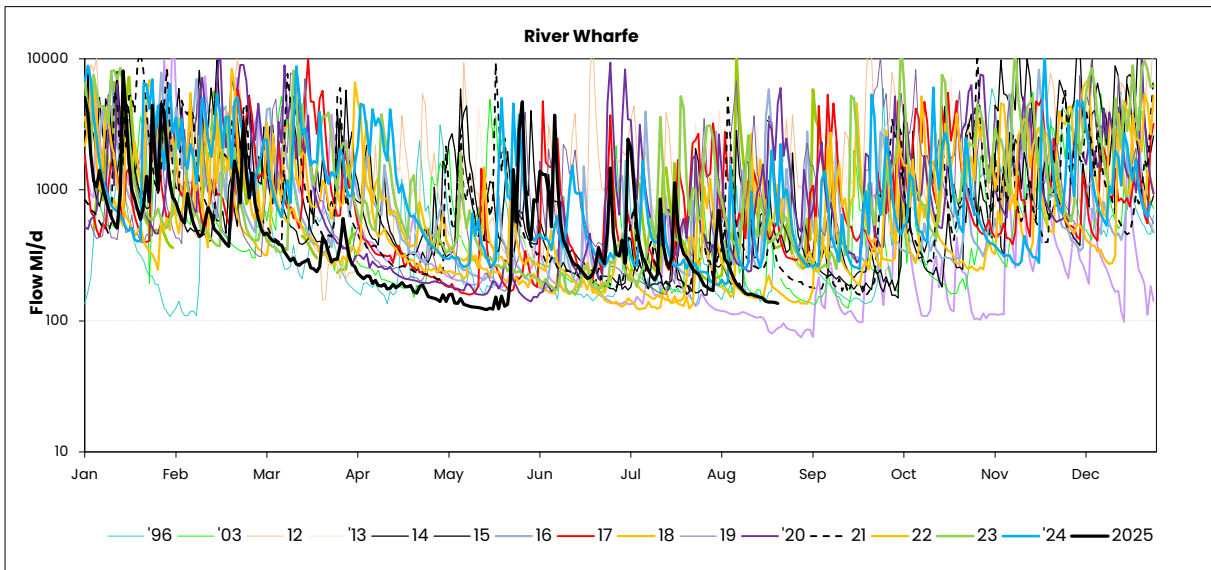
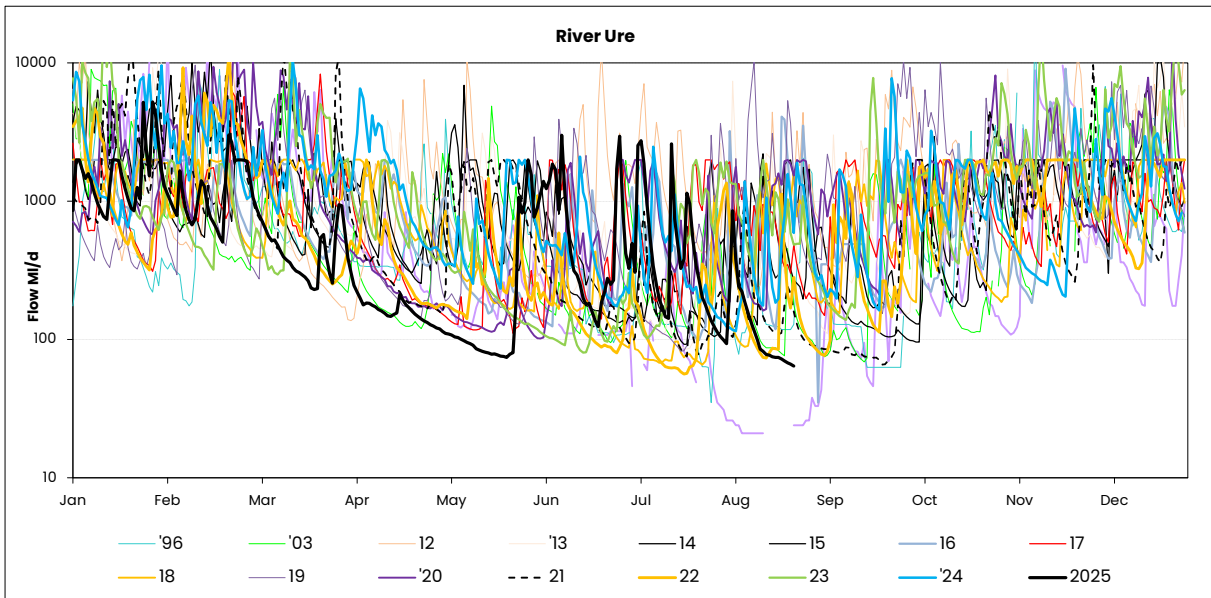
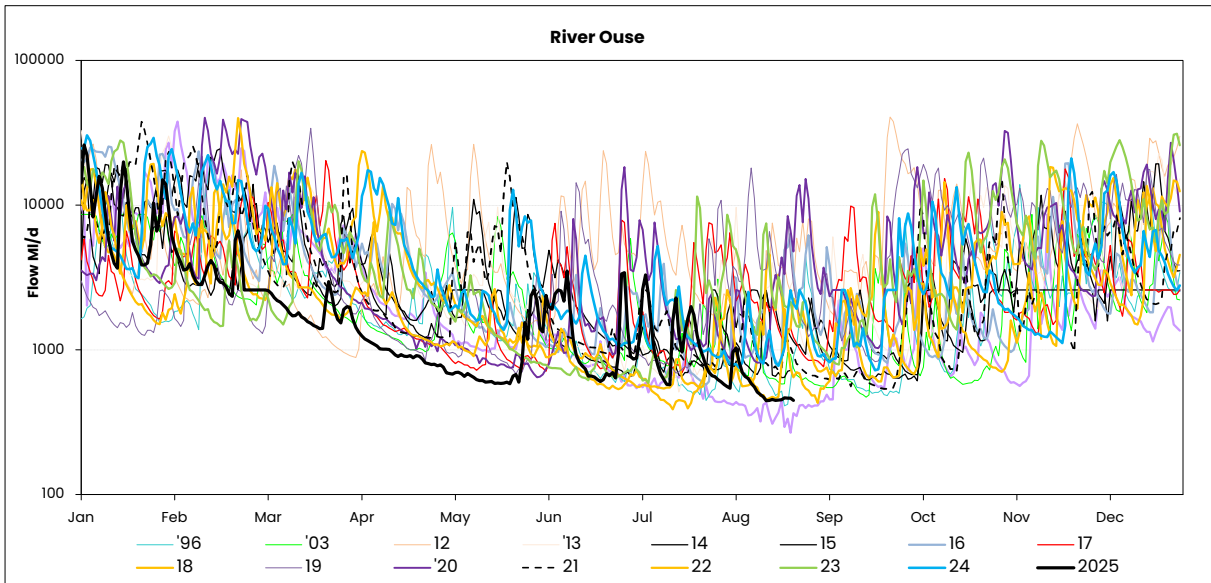
Regional Demand = 1288.5 MI/d (including York)

RIVER FLOWS

25 August 2025

	Mon 25-Aug	Mon 18-Aug	Mon 11-Aug	Mon 04-Aug	Critical flow bands
Derwent	294	289	305	340	305
Hull (using gauged (residual flows) only from 20	54	47	50	54	45 / 159 / 227
Ouse	446	455	586	542	400 / 650 / 1000
Ure	64	75	133	239	50 / 163 / 300
Wharfe	⊗ 136	⊗ 153	⊗ 193	Ⓛ 428	252 / 389 / 488 / 580





Yorkshire Region (Met Office)				England/Wales	
Month	mm	LTA	LTA(%)	mm	LTA(%)
January	82	80	103%	100	108%
February	37	70	53%	57	78%
March	26	60	43%	16	25%
April	11	58	19%	34	56%
May	36	55	65%	35	58%
June	41	73	56%	60	88%
July	69	68	101%	59	83%

SOURCE OF DATA : Hydrological Summary of Gt Britain, Institute of Hydrology

Yorkshire Water Services Data			
Rainfall Station	Total August	LTA August	LTA % August
Tophill	NDA	61	0%
Cottingham	8.4	66	13%
Bridlington	NDA	62	0%
Roundhill	16.2	87	19%
Fewston	6.7	77	9%
Osmotherley	10.2	76	13%
Scar House	26.6	112	24%
Watersheddes	18.4	121	15%
Gt Walden Edge	22.3	117	19%
Walshaw Dean	16.0	121	13%
Blackmoorfoot	16.4	96	17%
Ramsden	28.5	119	24%
Redmires	NDA	82	0%
Langsett	12.5	83	15%
YORKSHIRE REGION	16.6	91.4	18%
EAST REGION	9.3	67.7	14%
PENNINE (WEST)	18.2	103.7	18%

NDA= No data available/lack of readings, impacts % LTA for the month
SOURCE OF DATA : YWS RAIN GAUGES- weekly, so monthly data may include previous month or miss start of month

MAJOR SOURCE OUTPUTS

25 August 2025

21/08/2025

	Operational Maxima & Design Yields (Ml/d)	WRAP Targets Week Beginning - 21/08/2025	Daily Average Previous 5 Days Starting - 21/08/2025	WRAP Targets Week Starting - 14/08/2025	Daily Average Week Starting - 14/08/2025
WATER TREATMENT WORKS					
CENTRAL					
ECCUP NO 1 WTW	100	53.0	35	36	35
ECCUP NO 2 WTW	60	44.0	37	44	49
HEADINGLEY	95	63.0	84	63	74
HARLOW HILL	41.5	27.0	26	27	23
THORNTON STEWARD	22.5	19.7	23	20	23
EAST					
EAST NESS	17	8.0	6	8	9
IRTON	23.5	13.0	15	13	15
RUSWARP	12	7.0	9	7	9
TOPHILL LOW	68	40.0	36	40	37
KELDGATE	90	60.0	70	60	65
NORTH WEST					
CHELLOW	175	148.0	148	148	138
GRAINCLIFFE	60	38.0	29	38	41
SLADEN VALLEY	12	8.0	8	8	8
OLDFIELD	10.1	6.0	5	6	5
EMBSAY	25	17.0	20	17	19
SOUTH					
INGBIRCHWORTH	20	20.0	17	20	13
LANGSETT	56	36.0	41	36	35
(TOTAL)	75	56	58	56	47
EWDEN	40	35.0	22	35	19
LOXLEY	40	26.0	29	26	22
(TOTAL)	80	61	51	61	41
RIVELIN	75	64.0	36	64	40
SOUTH WEST					
ALBERT	55	51.0	41	51	42
FIXBY	30	21.0	16	21	18
KIRKHAMGATE	30	17.0	14	17	14
(TOTAL)	115	89	70	89	74
BLACKMOORFOOT	23	20.0	18	20	19
LONGWOOD	32	27.0	19	27	21
(TOTAL)	55	47	37	47	40
HOLMBRIDGE	29	19.0	15	19	13
GRID					
ELVINGTON	260	159	165	159	197
LOFTSOME BRIDGE	110	75	83	75	27

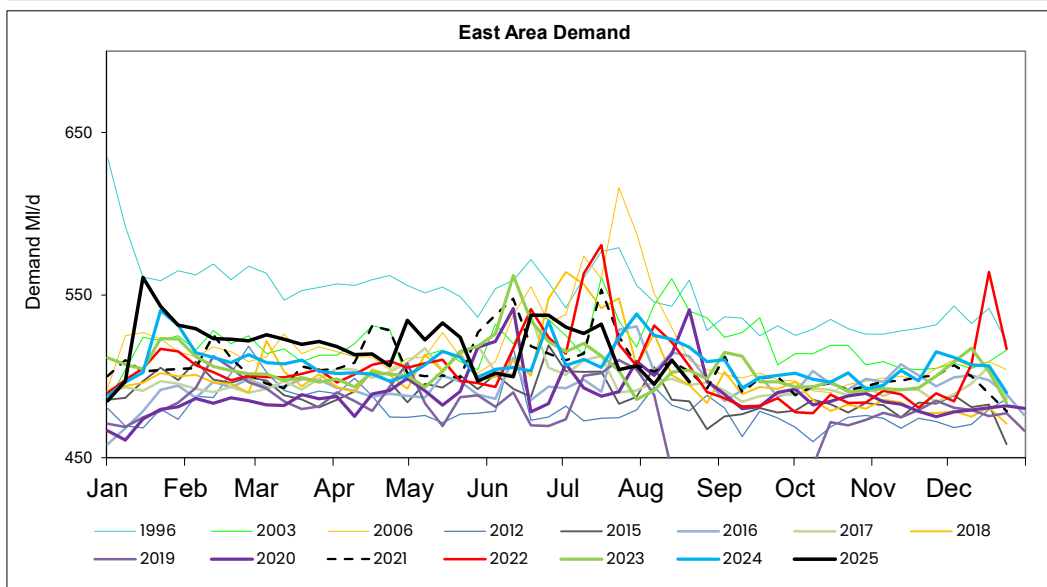
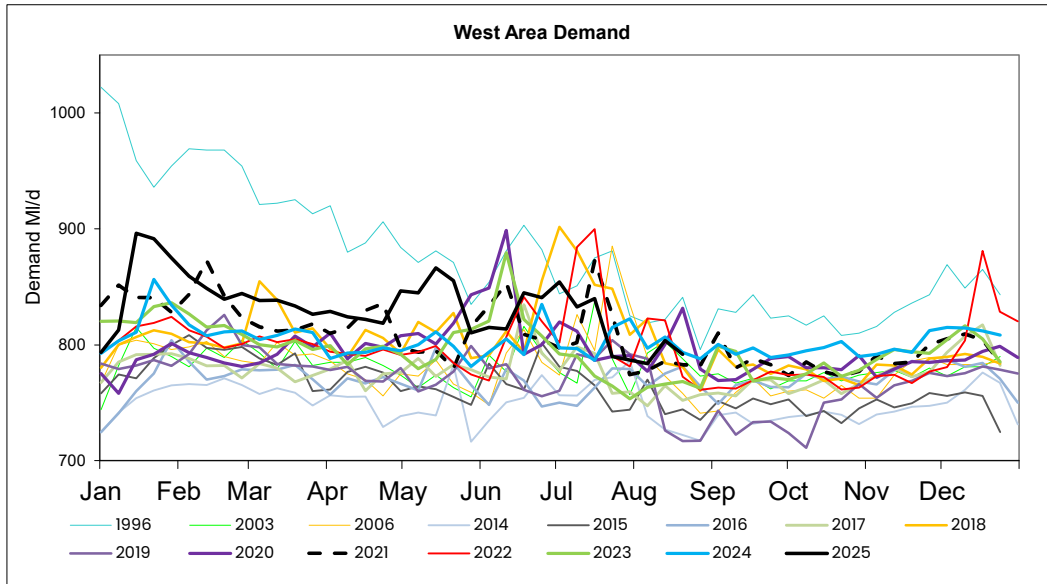
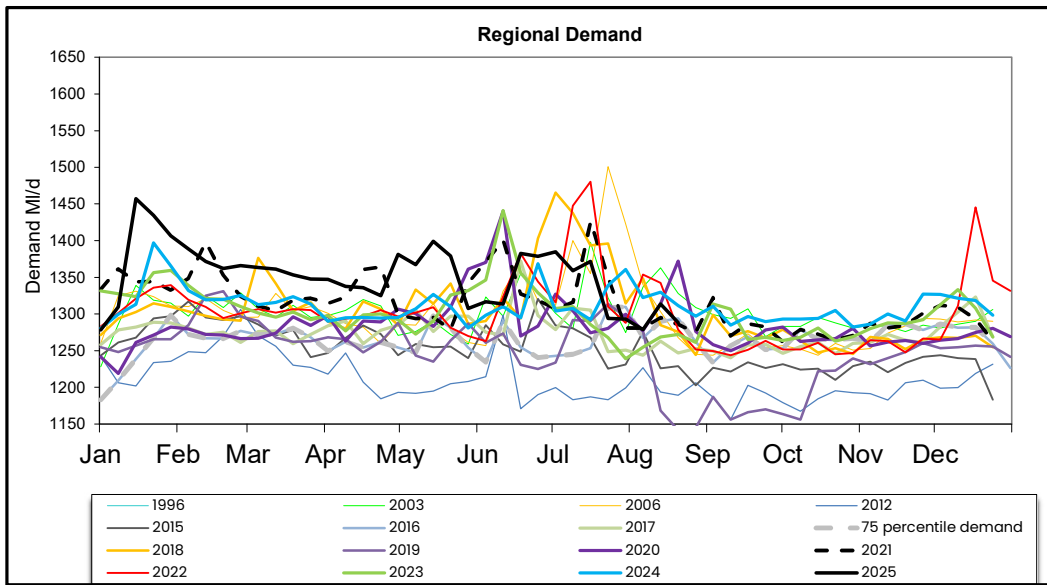
Daily Average Demand MI/d

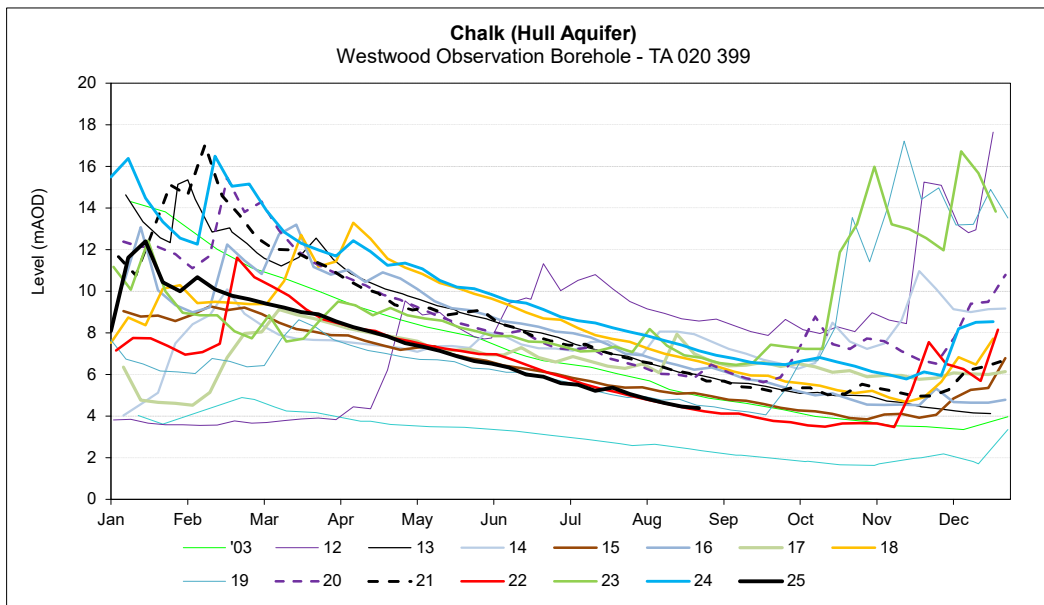
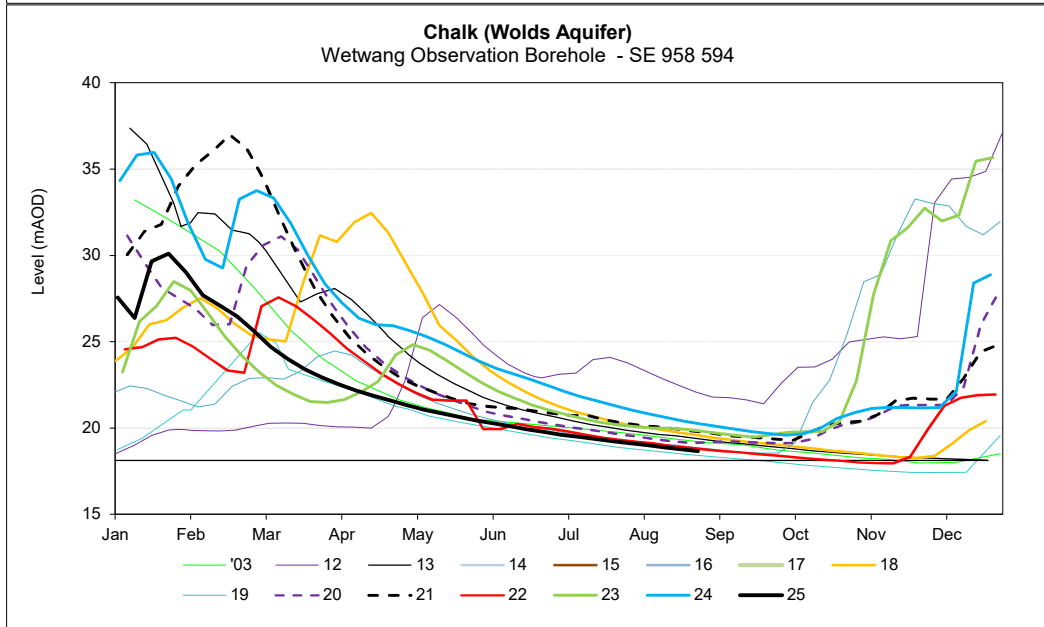
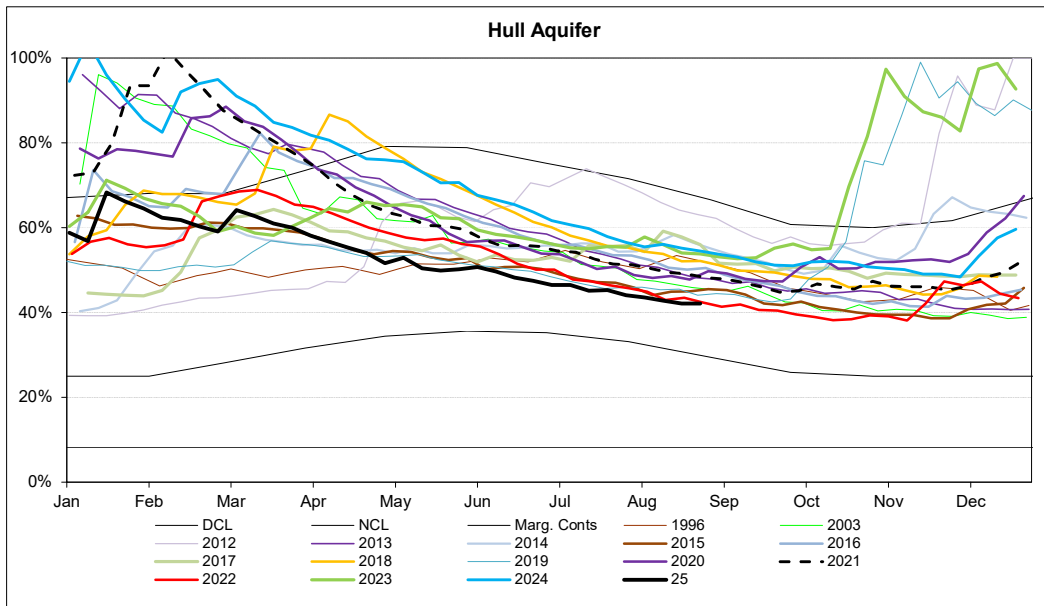
Week Ending Wednesday	L E S D S	W A M E + R F I E L D	S E L B Y	H A R R O G A T E	H U L L	M A L L T O N	S H E F F L E Y	D O N C A S T E R	B R A D F O R D	C A L D E R	S K I P T O N	Y O R K A R E A	R E G I O N
23/07/2025	160	77	40	76	169	56	267	80	142	146	37	43	1294
30/07/2025	159	77	41	77	168	58	265	80	140	146	37	44	1293
06/08/2025	157	77	41	77	160	58	265	80	140	143	36	43	1279
13/08/2025	161	79	42	81	163	60	270	85	144	146	37	46	1314
20/08/2025	158	77	41	81	155	61	267	83	142	144	38	42	1289

MONTHLY DEMANDS FROM WIS REPORT

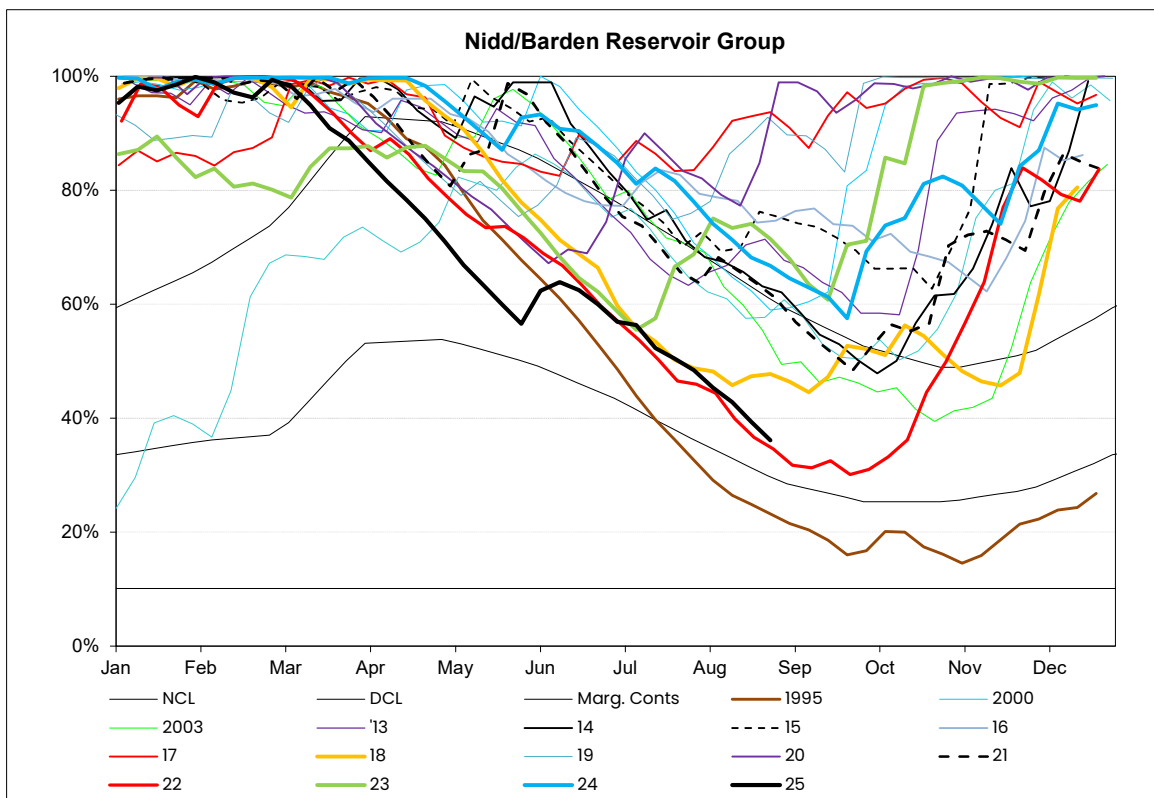
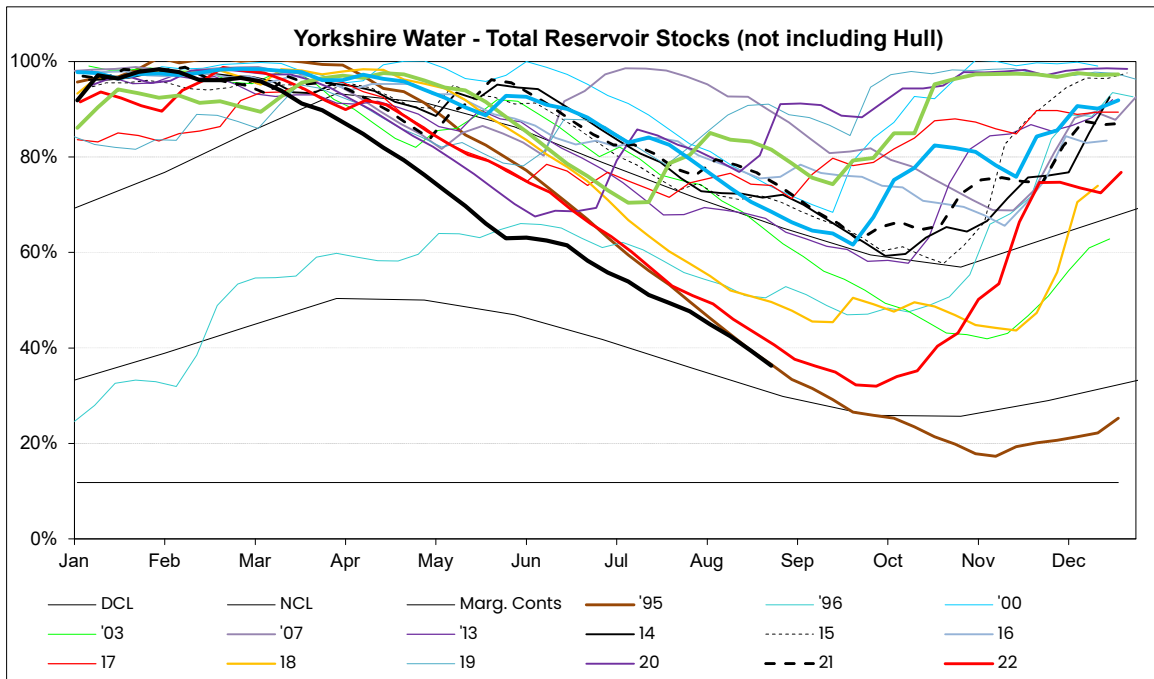
Jun-25	163	72	43	74	172	58	269	80	148	150	37	46	1312
Jul-25	159	75	41	74	173	58	251	76	145	142	37	44	1276

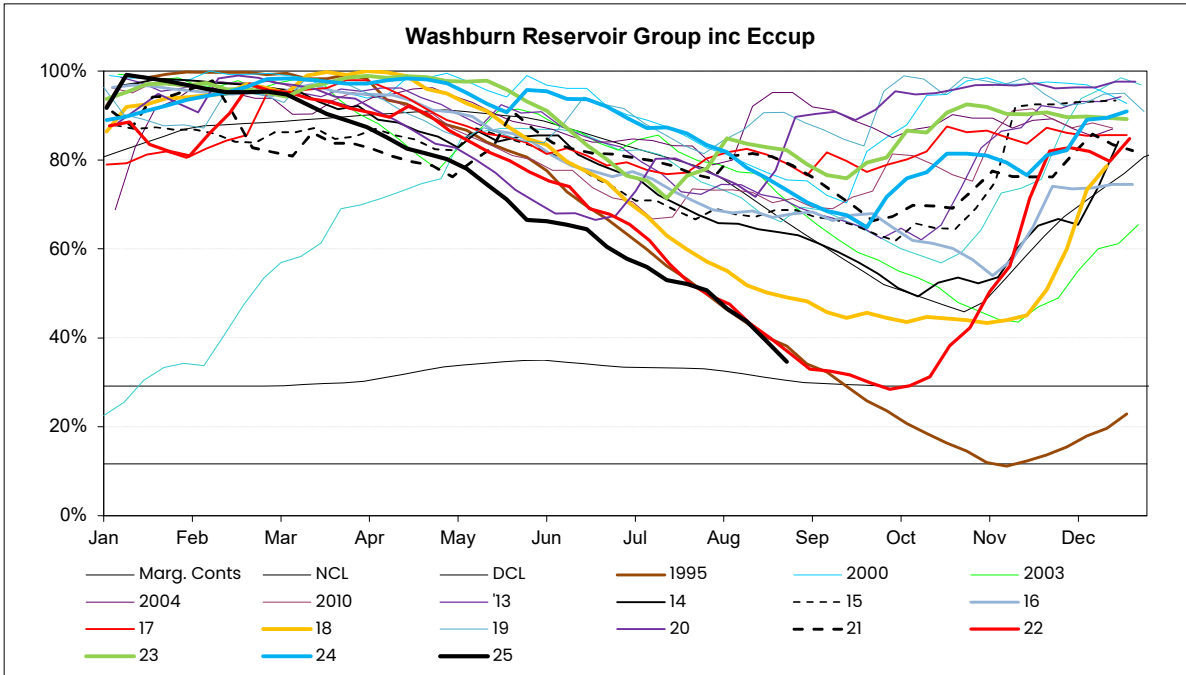
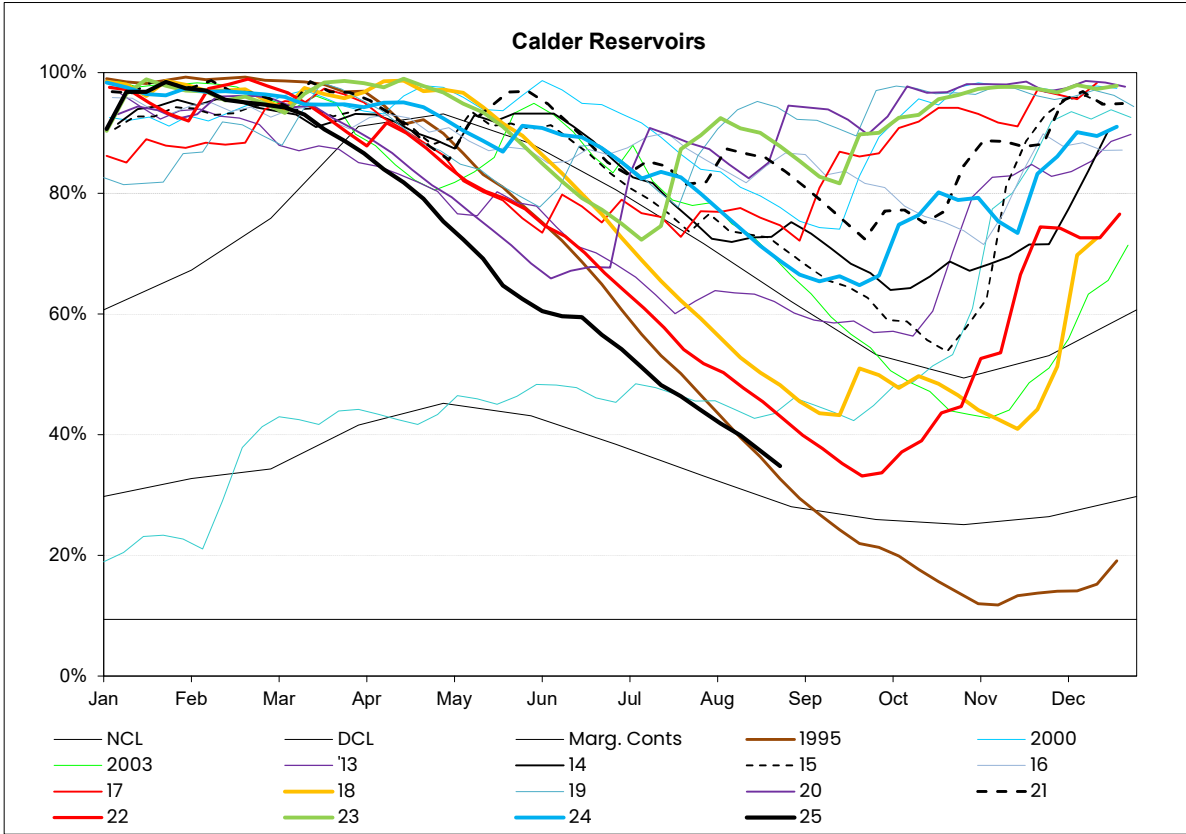
NB Current month demands include some estimates for minor sources and are not exactly comparable with previous months' figures



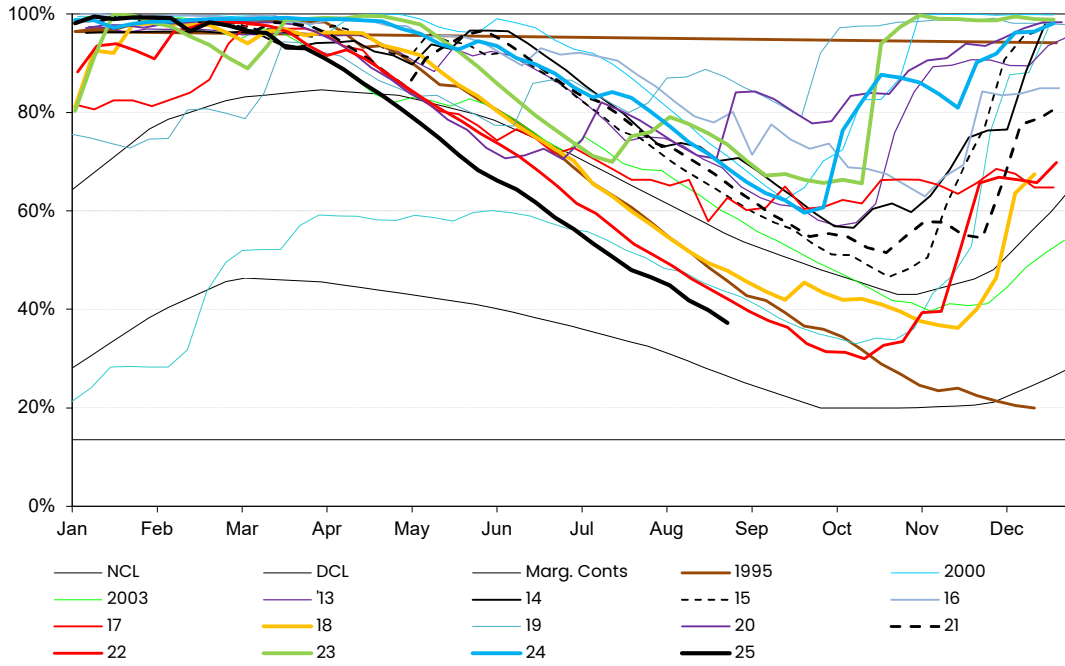


RESERVOIR STOCKS	25/08/2025		% Change	Planned Reservoir Safety Work	Required Drawdown & Duration	
Reservoir Group	% Stocks @	% Change	last week	Reason for Drawdown		
Calderdale (excl Withens Clough)	31.9%	-2.1%	-2.4%			
Boothwood/Ryburn (incl WC)	31.6%	-2.2%	-1.5%			
(Gorpley)	42.9%	-2.3%	-2.4%			
Huddersfield	39.6%	-3.0%	-3.4%			
Brownhill/Digley	36.2%	-2.9%	-2.6%			
Walshaw Dean Lower	18.9%	-1.8%	-0.8%	OSA Repairs	Apr 25 - May 25	86%
Widdop	16.7%	-0.7%	-0.6%	Increase Drawdown Capacity	June 25 - Aug 25	10%
Brownhill	41.4%	-4.3%	-1.6%	Leakage Investigation	Apr 25 - Sept 25	51%
Longwood Comp IRE	N/A	N/A	N/A	Spillway Grouting	Sep 25 - Mar 26	30%
Longwood ESR	N/A	N/A	N/A	Pipework Painting	TBC	76%
Calder Area Total	34.8%	-2.5%	-2.5%			
Nidd/Barden/Chelker	36.1%	-3.2%	-3.5%			
Grimwith	32.5%	-4.1%	-3.9%			
Worth Valley	46.3%	-3.1%	-3.2%			
March Ghyll	68.7%	-1.6%	-1.6%	Embankment Stability Works	Jan 23 - Dec 24	86%
Ponden	51.0%	-3.9%	-4.1%	Repair Ground Anchor	Aug 24 - Mar 25	88%
Chelker	92.8%	0.7%	-1.5%	Pointing	Nov 24 - May 25	34%
Chelker	92.8%	0.7%	-1.5%	Pointing	Nov 24 - May 25	78%
Silsden	41.7%	-3.0%	-4.0%	Spillway Repairs	Aug 25 - Sept 25	96%
Reva	45.8%	-1.2%	0.2%	Spillway Repairs	Aug 25 - Sept 25	92%
Hewenden				Spillway Repairs	TBC	95%
North West Area Total	36.8%	-3.5%	-3.5%			
Washburn/Eccup Resrs.	34.6%	-4.5%	-4.6%			
Thornton Steward	79.7%	1.2%	-2.5%			
Leighton/Roundhill	32.7%	-4.8%	-4.0%			
Haverah Park	50.3%	-3.7%	-2.9%			
Swinsty	37.6%	0.0%	-1.4%	Outlet Channel Repairs	Dates tbc	93%
Thruscross	27.7%	-4.5%	-4.3%	Bridge Repairs	Dates tbc	TBC
Cod Beck	100.0%	1.4%	-1.4%	Inspection of Overflow and Upstream Face	Aug 24 - Mar 25	83%
Randy Mere	N/A	N/A	N/A	Upstream Face Repairs	TBC	17%
North Area Total	36.1%	-4.4%	-4.5%			
Don Valley & Winscar	46.0%	-2.3%	-3.0%			
Rivelin Valley	73.2%	-0.2%	0.9%			
Little Don	29.6%	-1.8%	-2.6%			
Ewden Valley	24.5%	-1.8%	-2.4%			
Loxley Valley	33.8%	-4.3%	-1.1%			
Redmires	25.0%	-2.2%	-2.2%			
Redmires Upper	14.4%	-5.1%	-4.8%	Damage to Overflow Channel	Nov 23 - Oct 25	98%
Redmires Middle	35.3%	-0.9%	-0.4%	Damage to Overflow Channel	Nov 23 - Oct 25	89%
Strines	29.9%	-7.8%	4.2%	Overflow Investigation	Apr 25 -Sept 25	58%
South Area Total	33.6%	-2.5%	-1.9%			
Tophill Low	79.3%	3.4%	2.6%			
Hull Aquifer	42.2%	0.1%	-0.7%			
East Area Total	45.2%	0.3%	-0.5%			
Regional Total (DCP)	37.0%	-2.8%	-2.8%			
(inc East Area)						
YORKSHIRE TOTAL (Supply)	35.9%	-3.2%	-3.1%			
(not inc East Area)						





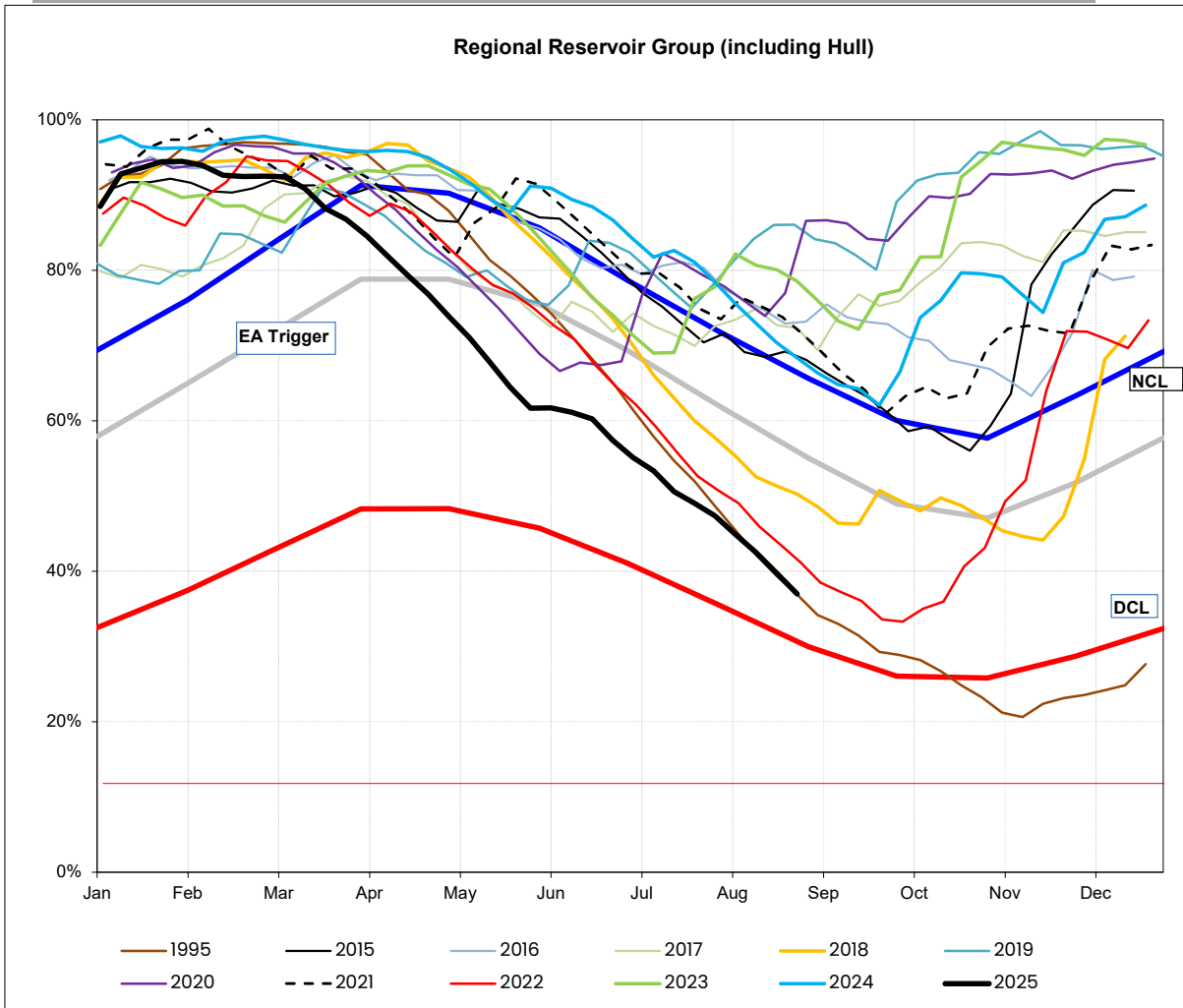
Sheffield & Barnsley Reservoirs



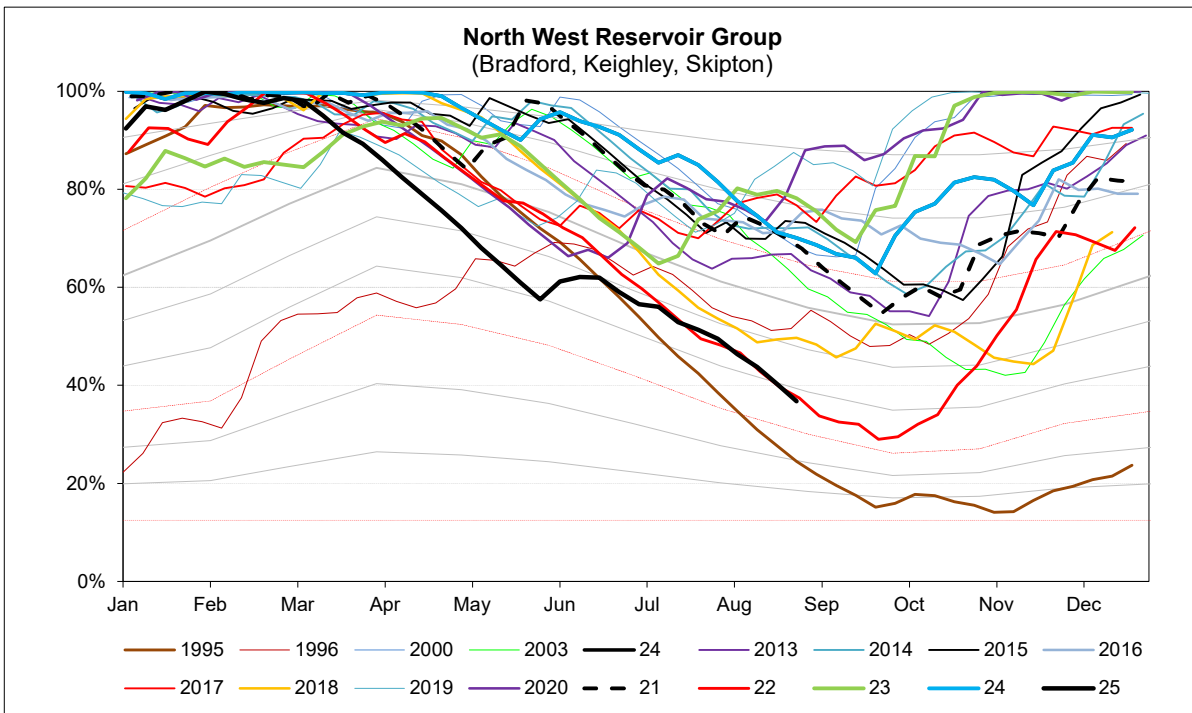
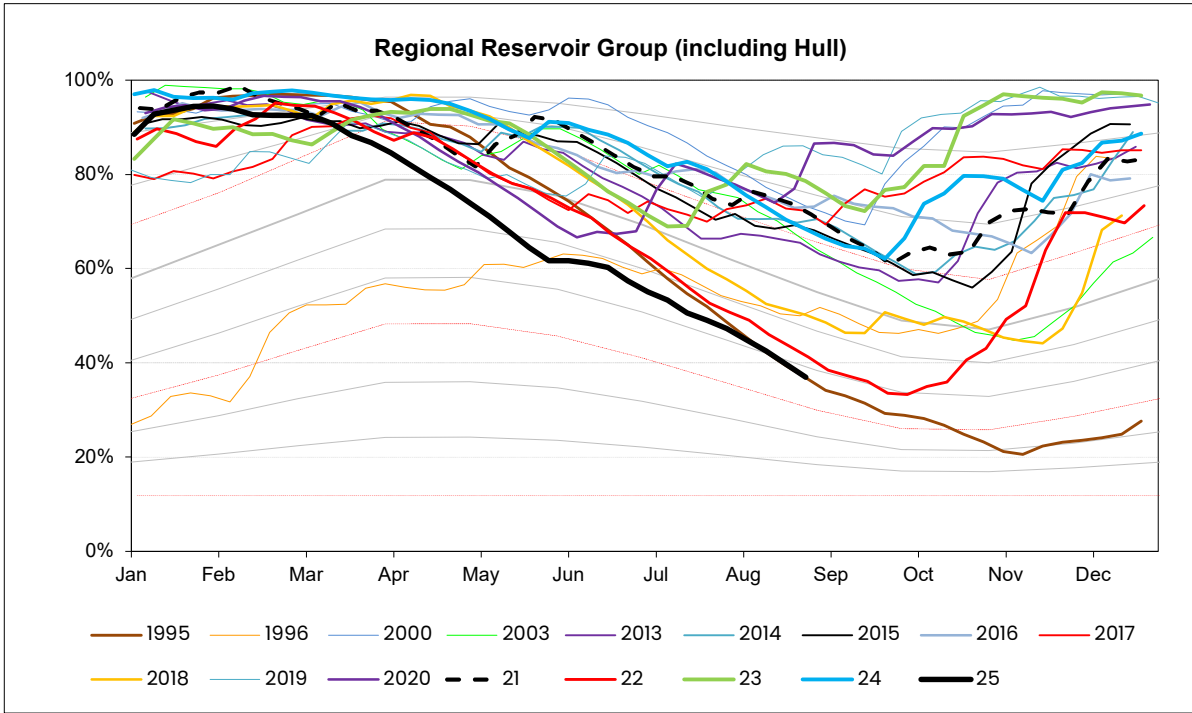
EA STOCKS REPORT

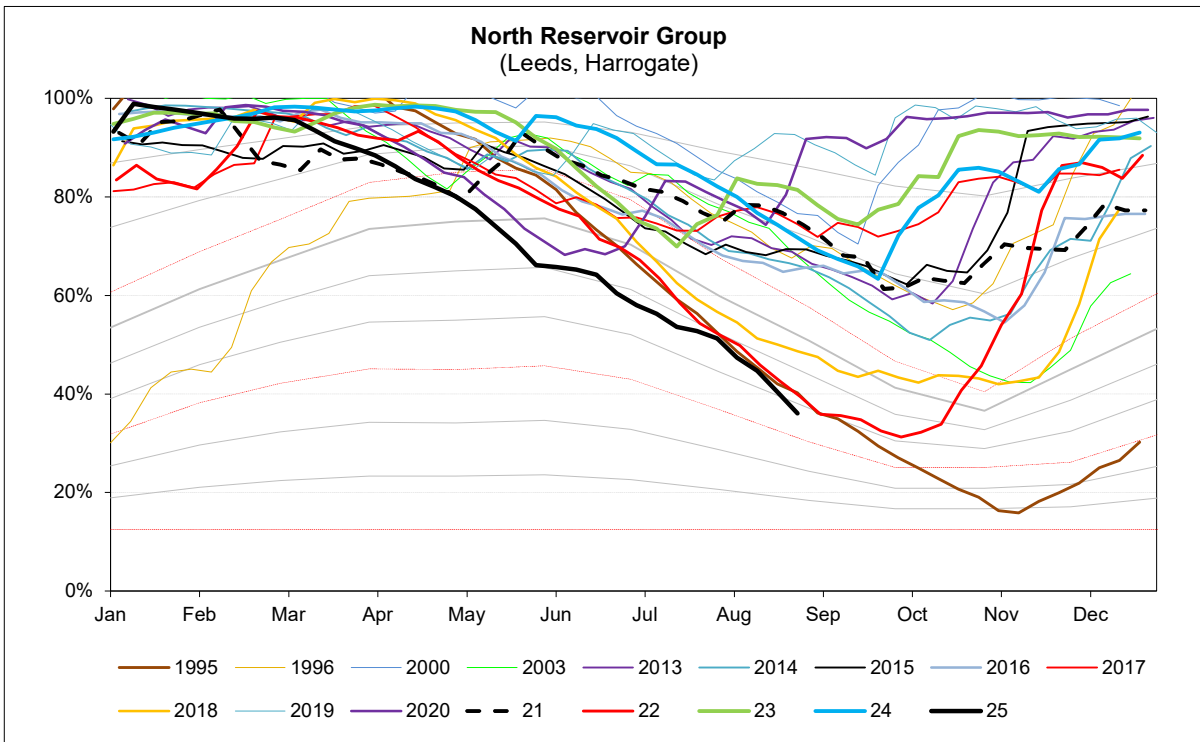
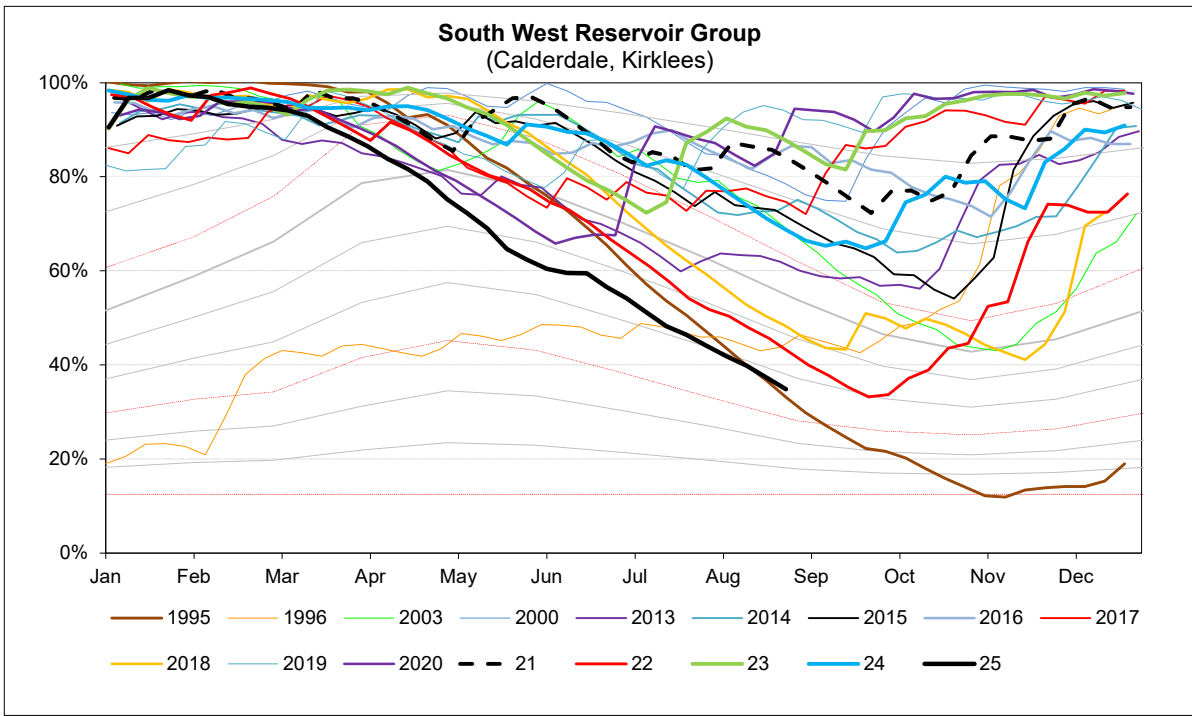
25 August 2025

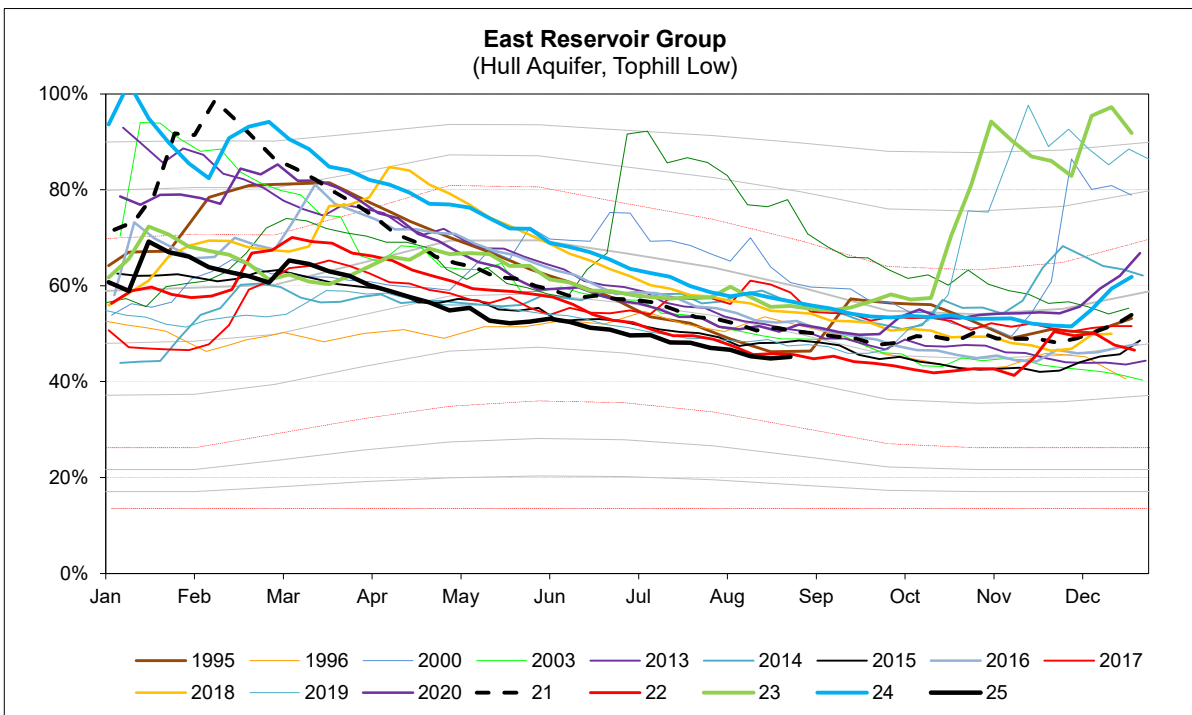
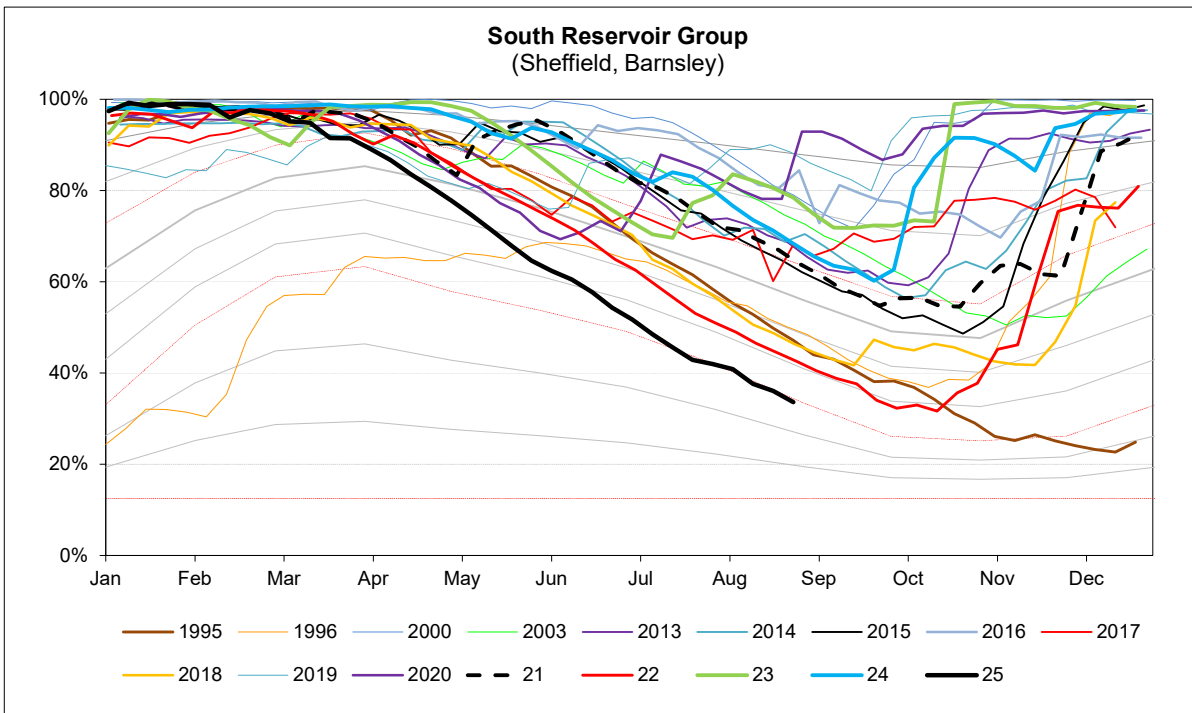
EA Stocks Report			25/08/2025				
	MI	%	% change		MI	%	% change
South West Area Supply Reservoirs				South Area Supply Reservoirs			
Calderdale Group	3551	31.9%	-2.1%	Don Valley	1350	64.9%	-1.9%
Huddersfield Group	5586	39.6%	-3.0%	Little Don	2184	29.6%	-1.8%
Brownhill/Digley excl Holme	2034	36.2%	-2.9%	Ewden Valley	1208	24.5%	-1.8%
Boothwood/Ryburn	3781	32.3%	-2.3%	Loxley Valley	2322	33.8%	-4.3%
				Rivelin	596	73.2%	-0.2%
South West Reservoir Group	15338	34.8%	-2.5%	Redmires	695	25.0%	-2.2%
Bradford Area Supply Reservoirs				South Reservoir Group			
Gouthwaite	2544	43.8%	-4.1%	South Reservoir Group	8356	33.6%	-2.5%
Grimwith	7074	32.5%	-4.1%	Winscar Group	3923	41.8%	-2.5%
Nidd/Barden/Chelker	6923	36.1%	-3.2%	Compensation Reservoirs			
Rombalds/Thornton Group	1149	51.5%	-1.9%	Scout Dike	141	20.3%	-2.8%
Skipton Area Supply Reservoirs				Underbank	1416	49.4%	-3.0%
Embsay	690	95.5%	0.5%	Morehall	776	35.7%	-2.5%
Worth Valley Group	1533	46.3%	-3.1%	Damflask	2614	51.2%	-2.9%
				North Area Supply Reservoirs			
North West Reservoir Group	17368	36.8%	-3.5%	Washburn	8092	34.6%	-4.5%
Compensation inc Silsden	699	29.7%	-2.9%	Eccup	2944	42.0%	-7.5%
Gouthwaite	2544	43.8%	-4.1%	Leighton/Roundhill	2424	32.7%	-4.8%
March Ghyll & Elslack Reservoirs excluded for consistency with stocks predictions in WRAPSIM				Haverah Park	504	50.3%	-3.7%
East Area Supply Reservoirs				Lumley Moor	215	56.4%	-1.4%
Tophill Low	1334	79.3%	3.4%	Thornton Steward	756	79.7%	1.2%
Hull Aquifer	8015	42.2%	0.1%	North Reservoir Group			
				North Reservoir Group	11991	36.1%	-4.4%
East Reservoir Group	9349	45.2%	0.3%	Lindley Wood Compensat	377	12.9%	-0.3%
				Regional Reservoir Group	66327	37.0%	-2.8%
				(sum of South West, North West, East, South, North & Winscar Rese			

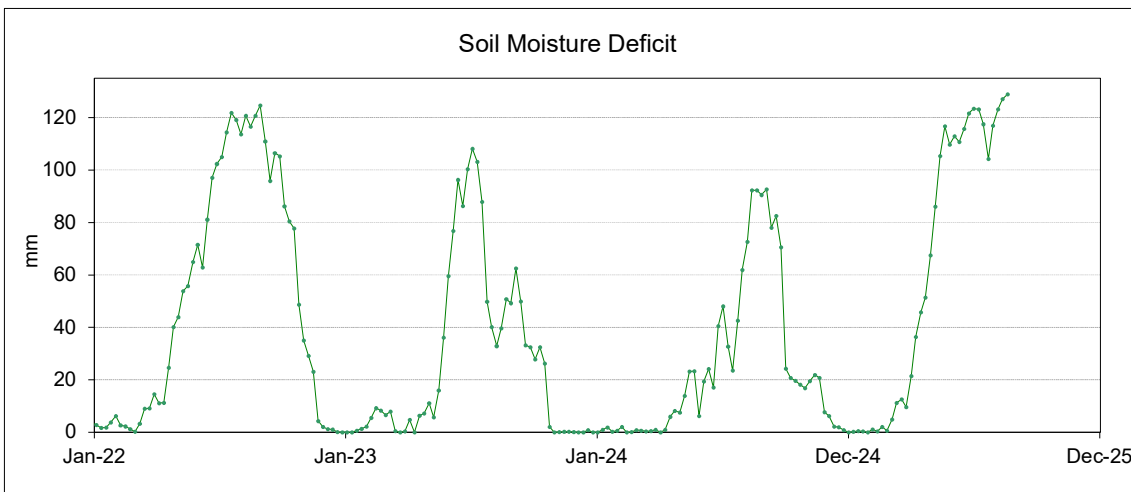
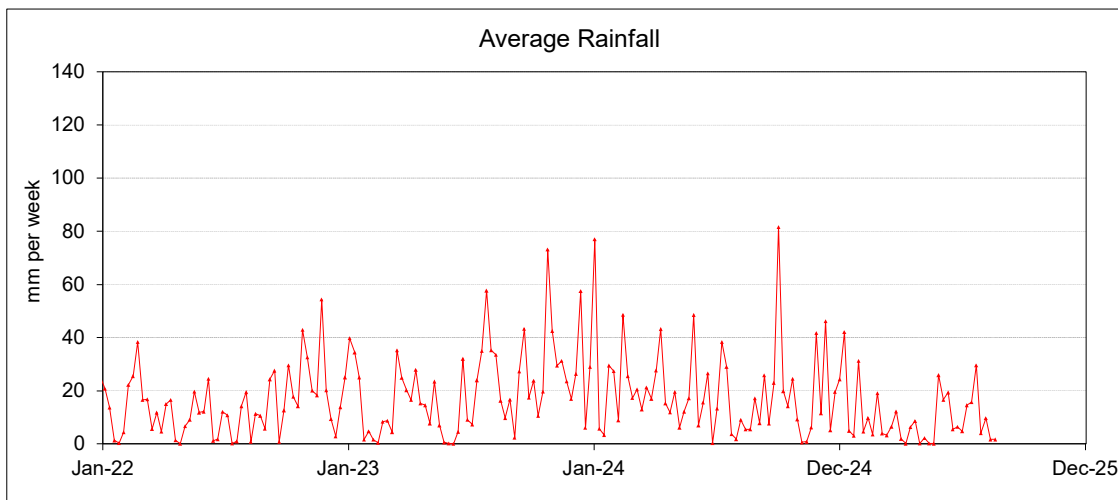
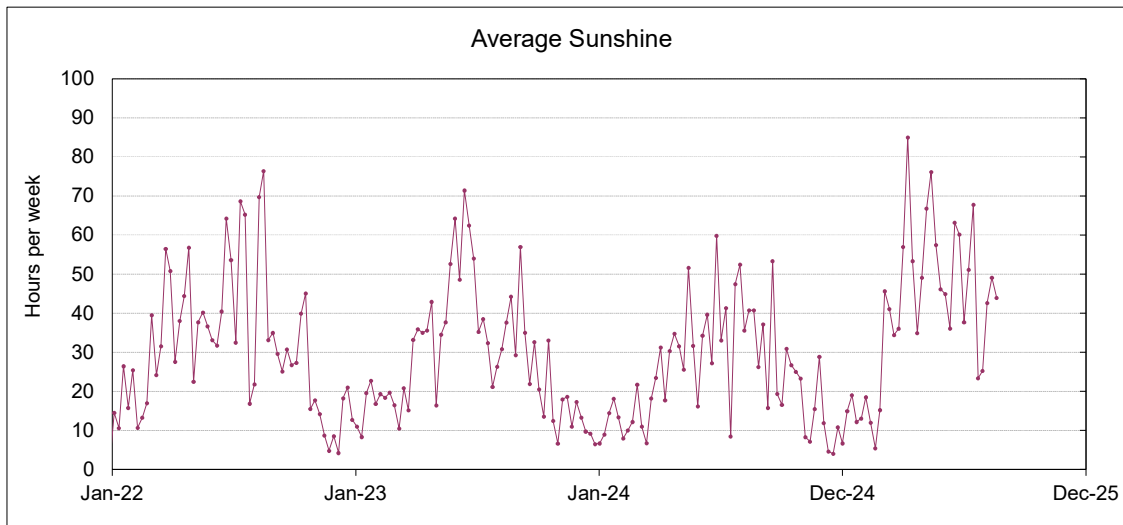


Triggers	
EA early warning (CL4)	Water resources to advise EA on production
Hosepipe Restrictions	When projected falling stocks fall below DCL
Drought Orders	When stocks are below DCL.









This page will normally be updated monthly (approx mid month).

This data may be subject to change following routine validation checks.

Where showing a negative value, this is normal at certain sources, due to the imports of water into that source being greater than the volumes abstracted.

Units in Ml

Data up to: 31-Jul-25

Serial No	Source	Reporting Year	July	Year to date Ml	Annual Limit	% of Annual Limit
02/27/023/332	Ainderby Steeple Boreholes	C	108.0	864	1760	49.1%
03/28/083/010	Armthorpe Boreholes	C	254.8	1676	3319	50.5%
03/28/083/012	Austerfield Boreholes	C	166.7	1461	11615	12.6%
02/27/022/020	Aysgarth & Newbiggin Springs	C	17.2	109	341	32.1%
02/27/012/035	Baitings, Ryburn & Blackhouse reservoirs	C	352.3	3703	20457	18.1%
02/27/023/032	Bellerby Borehole and springs near Bellerby	F	71.8	296	1250	23.7%
02/27/022/209	Birk Gill & River Burn	C	64.9	1689	6400	26.4%
02/27/012/254	Boothwood Reservoir & associated catchwaters	C	464.7	2295	20457	11.2%
02/27/10/112	Boshaw Whams Reservoir	C	0.0	0	55	0.0%
03/28/083/105	Boston Park Boreholes	C	181.2	1174	3318	35.4%
02/27/024/305	Brayton Barff Boreholes	C	0.0	0	2250	0.0%
02/26/030/002	Bridlington	C	163.6	1191	2500	47.6%
02/27/005/031	Broomhead Reservoir	F	746.7	3782	12410	30.5%
02/26/030/004	Burton Agnes	C	76.3	529	1000	52.9%
02/27/018/080	Carlton Hanger Lane Boreholes	C	195.8	1819	3500	52.0%
02/27/018/079	Carlton Mill Lane Boreholes	C	175.6	1158	3800	30.5%
02/27/019/009	Carr Bottom Reservoir, Burley Woodhead	C	0.0	18	409	4.4%
02/27/023/340	Catterick Boreholes	F	208.9	822	3650	22.5%
02/27/027/136	Cayton Carr Lane Boreholes	C	148.2	396	3928	10.1%
02/27/027/163	Cayton Station Road Borehole	C	75.4	937	2646	35.4%
02/27/019/137	Chelker Reservoir	C	78.2	936	5000	18.7%
02/27/023/031	Coalsgarth Springs	C	0.0	42	750	5.7%
02/27/011/064	Colne Valley Catchwaters	F	753.7	1819	5840	31.1%
02/26/032/126	Cottingham Well	C	759.0	6635	18184	36.5%
02/27/018/081	Cowick Boreholes	C	373.0	2564	5250	48.8%
02/27/023/046	Cranehow & Downholme Springs	C	0.0	0	318	0.0%
02/27/023/030	Crumma, Newsham & Gandale Springs	C	57.8	411	1364	30.1%
02/27/005/030	Dale Dyke & Agden Reservoirs	F	880.2	4176	21412	19.5%
02/27/012/261	Dean Head & Scammonden	F	371.2	896	3650	24.5%
02/27/19/121	Dib Spring, Hawkswick	C	0.0	0	27	0.0%
02/26/032/126	Dunswell Well	C	787.3	4030	16593	24.3%
NE/27/025/021	East Ness Boreholes	F	273.3	1147	5680	20.2%
02/26/031/087	Elmswell Wold Borehole	C	24.5	79	1273	6.2%
02/27/015/045	Embsay Reservoir	C	33.7	507	1846	27.4%
02/27/016/196	Esholt Sewage Treatment Works	C	0.0	0	88	0.0%
02/26/032/124	Etton Boreholes	C	196.9	908	5100	17.8%
03/28/083/012	Finningley Boreholes	C	319.4	2182	6780	32.2%
02/27/022/328	Fossdale (High Shaw) Springs	C	11.7	70	227	30.9%
02/27/018/120	Goosehouse Boreholes	C	282.0	1520	3500	43.4%
02/27/012/043	Gorpley Reservoir	C	0.0	0	1823	0.0%
02/27/016/022	Graincliffe Reservoir	F	-69.0	-269	2728	-9.8%
02/27/012/037	Green Withens Ringstone Res & catchwater	C	341.4	2891	20457	14.1%
02/27/019/051	Greenhow Tunnel (Nidd Aqueduct) Dale Head Intake	C	0.0	0	214	0.0%
02/27/019/052	Greenhow Tunnel (Nidd Aqueduct) No.2 Access Shaft	C	0.0	0	6819	0.0%
NE/27/019/005	Grimwith Reservoir to Nidd Aqueduct	F	117.2	1061	3650	29.1%
02/26/030/003	Haisthorpe Boreholes	C	231.9	1619	5000	32.4%
03/28/083/012	Hatfield Boreholes	C	115.8	837	3319	25.2%
03/28/083/100	Hatfield Woodhouse Boreholes	C	0.0	0	3320	0.0%
02/27/029/010	Hazel Head Springs	C	26.9	260	1162	22.4%
02/27/012/041	Hebden, Luddenden & Hebble Valley Resrs	F	948.8	4207	15695	26.8%
02/27/018/077	Heck Boreholes	C	0.0	0	2489	0.0%
03/28/083/012	Highfield Lane Boreholes	C	431.8	3038	11615	26.2%
02/27/023/685	Hollin Hill Borehole	F	2.2	13	45	29.5%
02/27/010/063	Holmestyes & Digley Reservoirs	F	155.8	743	5840	12.7%
02/27/22/024	Horsehouse Spring, leyburn	C	0.0	0	33	0.0%
02/27/027/002	Howe Hill Well	F	82.7	318	1014	31.4%
02/26/031/006	Hutton Cranswick	C	47.7	323	796	40.6%
02/27/005/012	Ingbirchworth Reservoir & Annat Royd Intake	C	37.7	1091	3637	30.0%
02/27/005/202	Ingbirchworth South Borehole	F	4.1	16	132	12.4%
02/27/027/058	Irton	C	481.7	3368	8215	41.0%
02/27/21/015	John O'Gaunts and Beaverdyke Reservoirs	C	0.0	0	1909	0.0%
02/27/014/010	Keighley Moor Reservoir	F	53.2	184	6951	2.6%
02/27/025/128	Keld Head Boreholes	C	184.7	1257	3319	37.9%
02/26/032/126	Keldgate Boreholes	C	355.1	1987	5819	34.1%
02/26/031/002	Kilham	C	14.0	89	1818	4.9%

02/27/005/032	Langsett Reservoir	C	860.2	7071	17155	41.2%
02/27/022/210	Leighton Reservoir & Spruce Gill stream intake	C	324.1	3831	13184	29.1%
03/28/083/107	Littleworth Borehole	C	0.0	0	1659	0.0%
02/27/028/270	Loftsome Bridge ASR Borehole No.1	C	0.0	0	150000	0.0%
02/27/014/009	Lower Laithe Reservoir	F	122.7	546	6951	7.9%
02/27/005/011	Midhope Reservoir & Knoll Brook Intake	F	65.8	823	17155	4.8%
02/26/034/006	North Newbald	C	0.0	0	548	0.0%
03/28/083/012	Nutwell Boreholes	C	209.4	1426	4983	28.6%
02/27/019/006	Panorama, Hilltop & Old Reservoirs & Springs	C	11.4	150	1000	15.0%
02/27/018/078	Pollington Boreholes	C	200.0	1407	5000	28.1%
02/27/014/058	Ponden Reservoir	F	127.8	457	6951	6.6%
02/27/016/023	Reva Reservoir, Hawkesworth	C	103.8	477	1364	35.0%
02/27/005/029	Rivelin and Redmires Reservoirs	F	200.8	589	8030	7.3%
02/27/028/017	River Derwent at Elvington	F	5963.1	22462	75000	29.9%
02/27/028/083	River Derwent at Loftsome Bridge	F	2143.9	6693	30400	22.0%
02/27/029/012	River Esk	C	298.0	1949	7823	24.9%
02/26/031/047	River Hull & West Beck	C	1539.8	8591	25000	34.4%
02/26/032/194	River Hull for Sewer Cleaning	C	0.0	0	91	0.0%
02/27/024/078	River Ouse at Acomb	F	939.5	3543	35000	10.1%
02/27/024/158	River Ouse at Moor Monkton	F	3505.4	12716	73000	17.4%
02/27/022/214	River Ure at Kilgram Bridge	F	817.4	2119	15000	14.1%
02/27/020/196	River Wharfe at Arthington	F	561.6	1270	19009	6.7%
02/27/019/129	River Wharfe at Lobwood	F	2291.2	9310	27392	34.0%
03/28/083/012	Rossington Bridge Boreholes	C	0.0	0	5172	0.0%
02/27/022/027	Roundhill and Lumley Moor Reservoirs	C	0.0	219	3500	6.3%
02/27/005/013	Royd Moor Reservoir & Intakes	C	33.2	684	2955	23.2%
02/27/021/016	Scargill Reservoir	C	89.0	538	1932	27.8%
02/27/021/092	Scarhouse & Angram Resvrs with tunnel & catchwater	C	2859.6	20890	38164	54.7%
02/27/15/149	Silsden Beck, Stilling-Basin at foot of Silsden Reservoir Embk	C	0.0	0	10	0.0%
02/26/032/126	Springhead Well	C	766.1	4958	13638	36.4%
02/27/022/021	Stalling Busk & Marsett Springs	C	0.0	0	33	0.0%
02/27/022/208	Stock Beck, Carlesmoor Beck & River Laver	C	58.2	1640	3500	46.8%
02/27/023/684	Stubbing Nook Borehole	F	6.4	57	135	42.1%
03/28/083/012	Thornham Boreholes	C	307.3	2101	6213	33.8%
02/27/016/160	Thornton Moor & Stubden Reservoirs	C	65.6	1616	6214	26.0%
02/27/012/038	Turvin Clough	C	2.3	140	4014	3.5%
02/27/019/054	Upper & Lower Barden Reservoirs	C	617.6	3833	14223	27.0%
02/27/020/088	Washburn Valley Reservoirs	C	2299.8	18087	43800	41.3%
02/27/015/041	Watersheddles Reservoir	F	89.4	427	6951	6.1%
02/27/016/021	Weecher Reservoir	C	3.9	101	909	11.1%
02/27/011/065	Wessenden Valley, Blackmoorfoot & Deerhill	F	326.7	1914	12410	15.4%
02/27/023/034	West Stonesdale (Garland Hill) Springs	C	0.0	0	282	0.0%
02/27/015/042	Whinney Gill & Jenny Gill Reservoirs	C	0.0	0	377	0.0%
02/27/005/026	Winscar, U & L Windleden, Harden & Snailsden	F	808.9	2907	10140	28.7%
02/27/012/036	Withens Clough Resr & Catchwater	C	156.6	1327	3319	40.0%
02/27/010/011	Yateholme, Riding Wood, Ramsden & Brownhill	F	215.2	1089	6820	16.0%

*Royd Moor, Langsett & Rivelin have estimates as we are awaiting readings.

Licences with Aggregated Annual Quantities	Reporting Year	July	Year to date MI	Annual Limit	% of Annual Limit
Baitings, Ryburn, Boothwood, Green Withens	C	1158	8889	20457	43%
Langsett, Midhope	C/F	926	7894	17155	46%
Worth Valley	F	393	1614	6951	23%
River Derwent (Elvington, Loftsome)	F	8107	29154	94841	31%
Cayton, Irton	C	705	4701	10700	44%
Selby Boreholes	C	1227	8468	25283	33%
Doncaster Wellfield	C	1986	13896	30295	46%
Doncaster Sub Group	C	1550	11045	26049	42%
Austerfield & Highfield Lane	C	599	4499	9956	45%
Hull Groundwater Sources	C	2668	17609	32850	54%

Third Party Agreements (Calendar Year)

Units in MI

Data up to:

31-Jul-25

Source	Reporting Year	July	Year to date MI	Annual Limit	% of Annual Limit
CRT, Hudds Narrow Canal	C	120	545	1273	43%
Severn Trent Ladybower Reservoir	C	1205	9878	21550	46%

Reading date:

25-Jul-25

	Reporting Year	Year to date MI	Annual Limit	% of Annual Limit
Winscar To Langsett Transfer Usage	F	961	2482	39%