

## 1. Rainfall

The Yorkshire Region Has Received 51.5% of LTA for February

## 2. Reservoirs (surface water supply reservoirs not including Hull)

Over the Past Week Our Reservoir Stocks Have Increased By 0.19% To 96.6%

## 3. Rivers

All of Our Rivers are Above Critical Levels

## 4. Demand

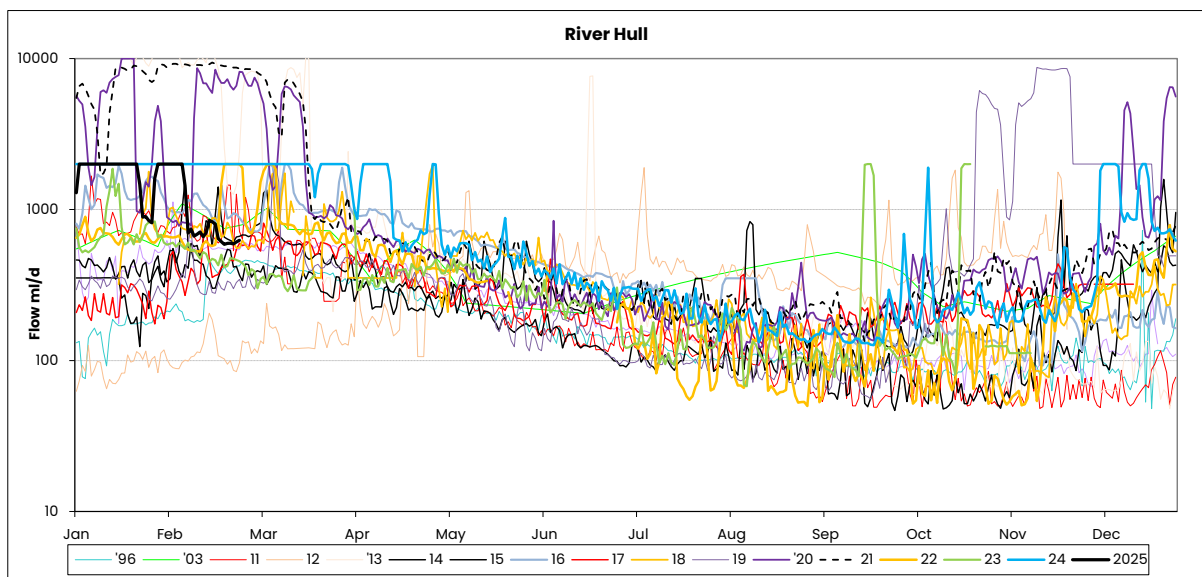
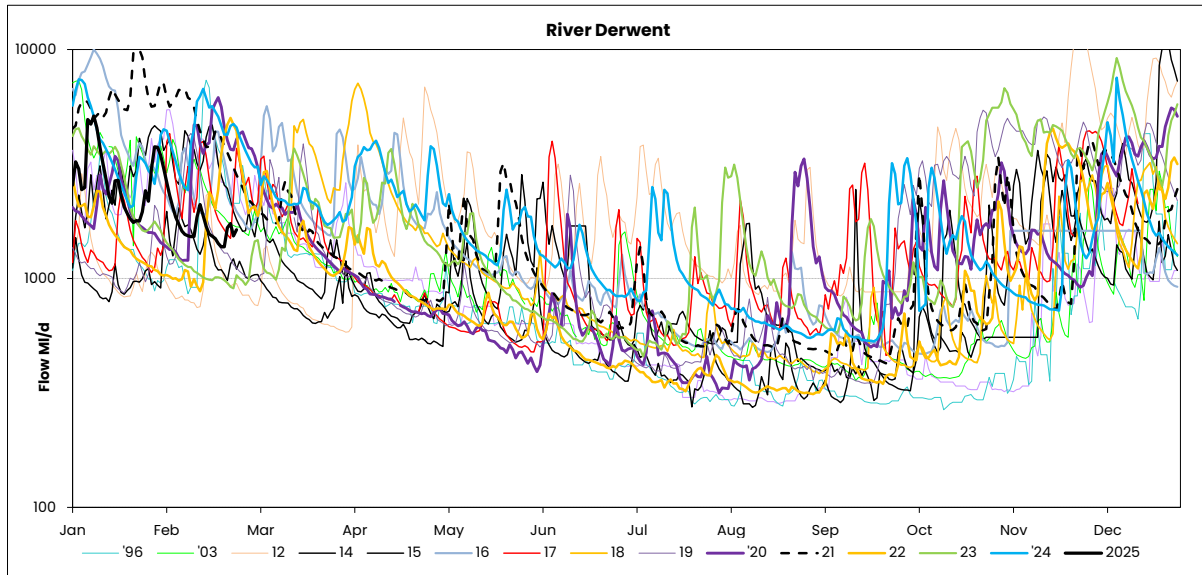
Regional Demand = 1364.6 MI/d (including York)

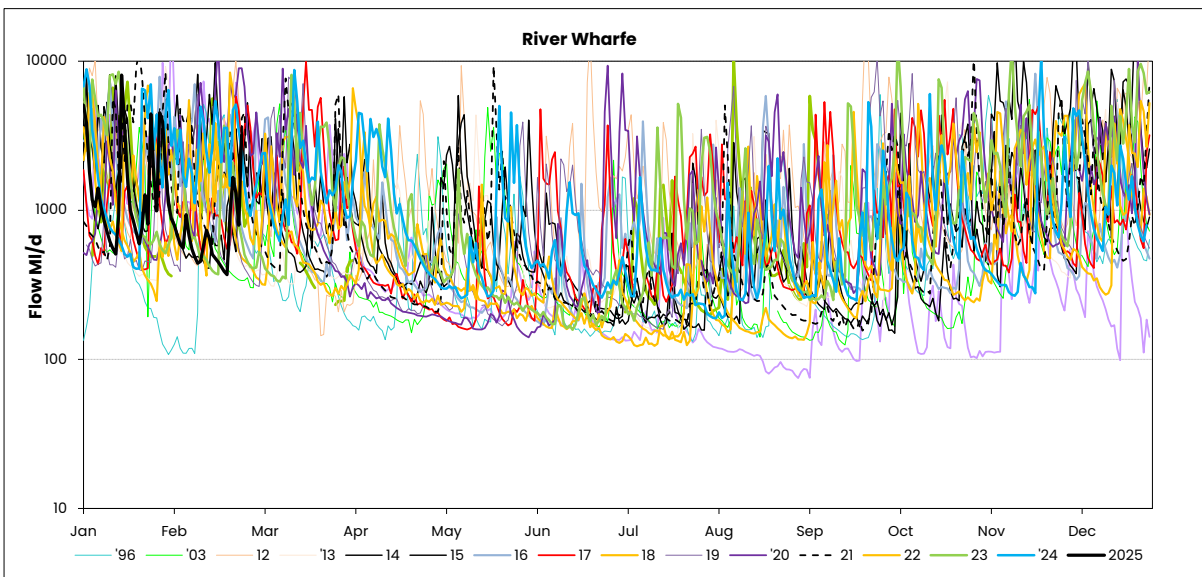
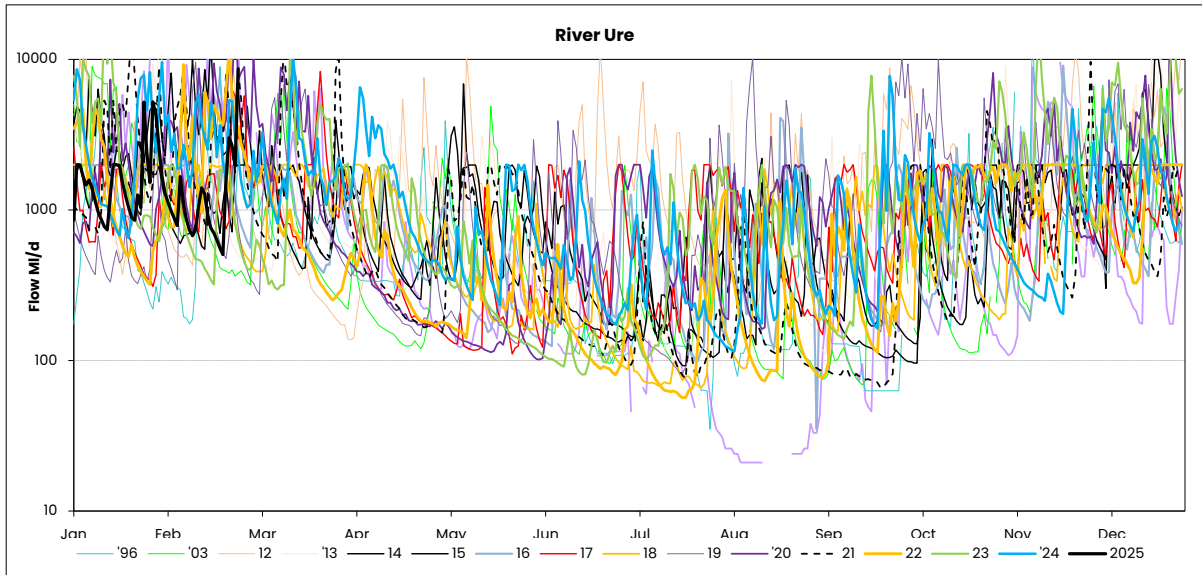
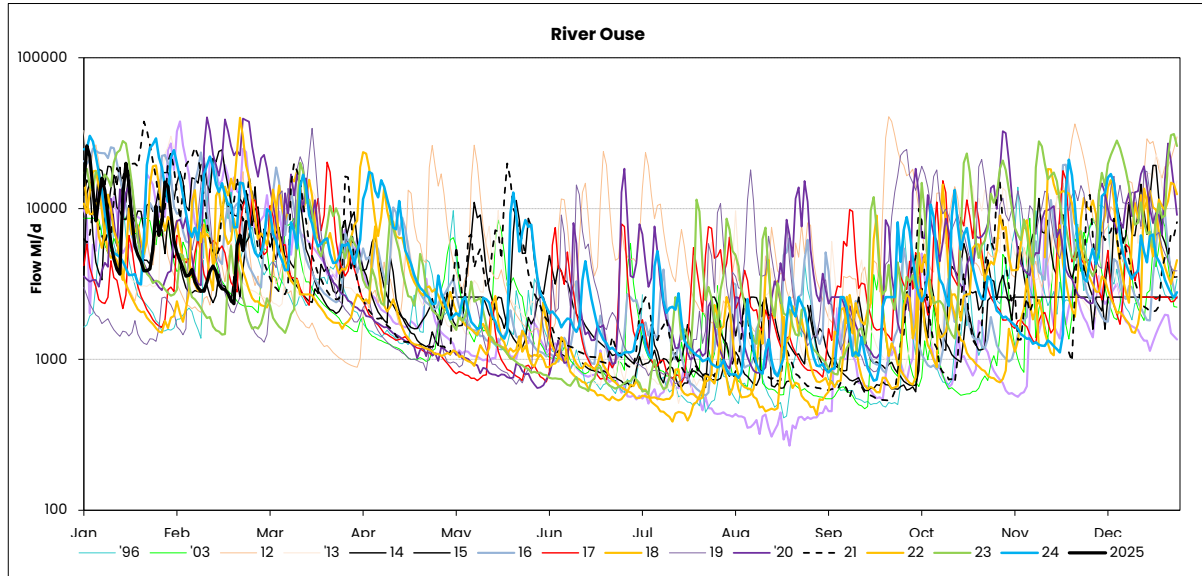
## 5. Comments

**RIVER FLOWS**

**24 February 2025**

	Mon 24-Feb	Mon 17-Feb	Mon 10-Feb	Mon 03-Feb	Critical flow bands
Derwent	✓ 1631	✓ 1494	✓ 1524	✓ 2049	305
Hull (using gauged (residual flows) only from 24)	✓ 625	✓ 643	✓ 686	✓ 2000	45 / 159 / 227
Ouse	✓ 8196	✓ 2910	✓ 2830	✓ 4026	400 / 650 / 1000
Ure	✓ 8668	✓ 633	✓ 740	✓ 876	50 / 163 / 300
Wharfe	✓ 3210	⚠ 419	⚠ 455	✓ 590	252 / 389 / 488 / 580





Yorkshire Region (Met Office)				England/Wales	
Month	mm	LTA	LTA(%)	mm	LTA(%)
July	74	69	108%	80	113%
August	30	77	39%	54	68%
September	118	71	167%	136	183%
October	72	84	86%	96	97%
November	51	89	57%	84	82%
December	108	90	120%	97	93%
January	82	80	103%	100	108%

**SOURCE OF DATA : Hydrological Summary of Gt Britain, Institute of Hydrology**

Yorkshire Water Services Data			
Rainfall Station	Total February	LTA February	LTA % February
Tophill	NDA	39	0%
Cottingham	20.1	41	49%
Bridlington	12.9	46	28%
Roundhill	44.0	88	50%
Fewston	23.5	69	34%
Osmotherley	22.5	47	48%
Scar House	72.7	107	68%
Watersheddles	49.5	97	51%
Gt Walden Edge	50.2	91	55%
Walshaw Dean	63.0	100	63%
Blackmoorfoot	48.8	89	55%
Ramsden	61.6	111	55%
Redmires	34.4	83	41%
Langsett	39.2	84	47%
<b>YORKSHIRE REGION</b>	<b>41.7</b>	<b>81.0</b>	<b>52%</b>
<b>EAST REGION</b>	<b>18.5</b>	<b>44.7</b>	<b>41%</b>
<b>PENNINE (WEST)</b>	<b>46.3</b>	<b>87.8</b>	<b>53%</b>

NDA= No data available/lack of readings, impacts % LTA for the month

SOURCE OF DATA : YWS RAIN GAUGES- weekly, so monthly data may include previous month or miss start of month



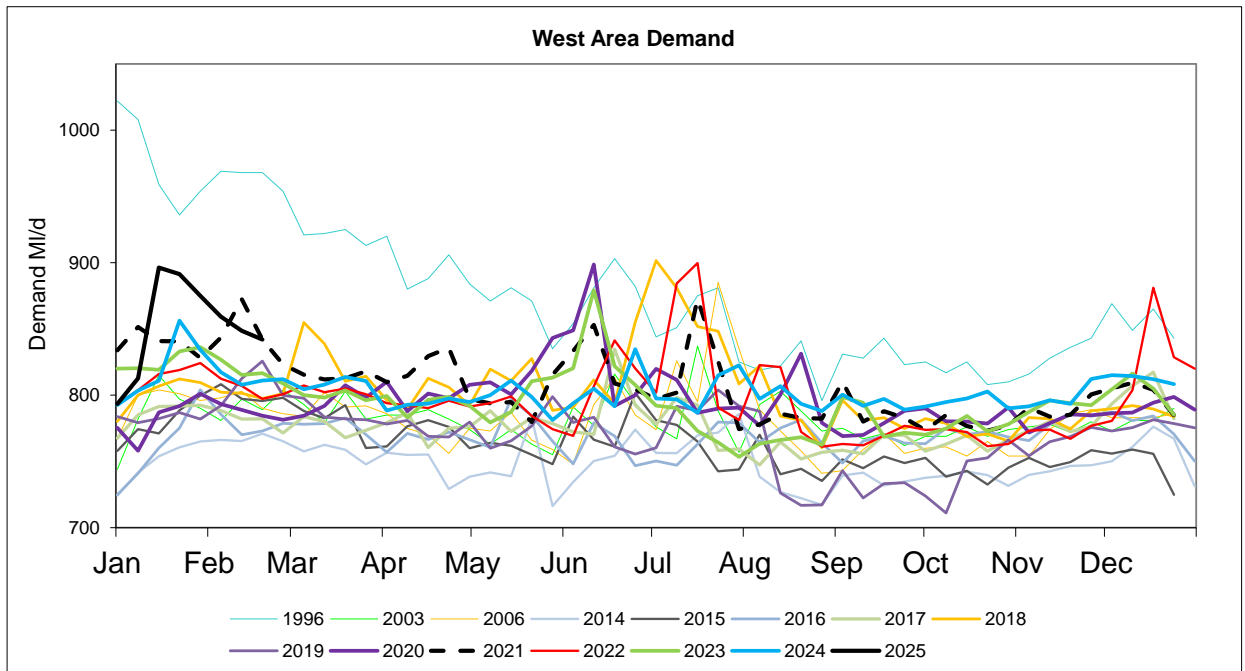
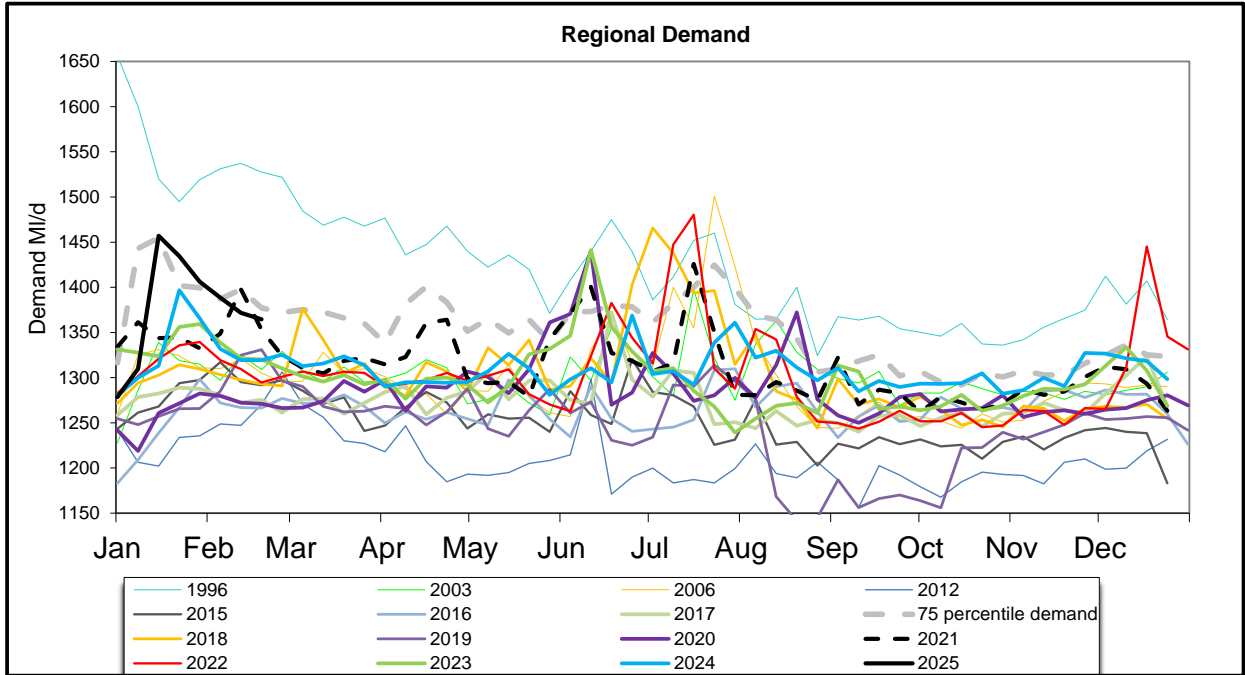
Daily Average Demand MI/d

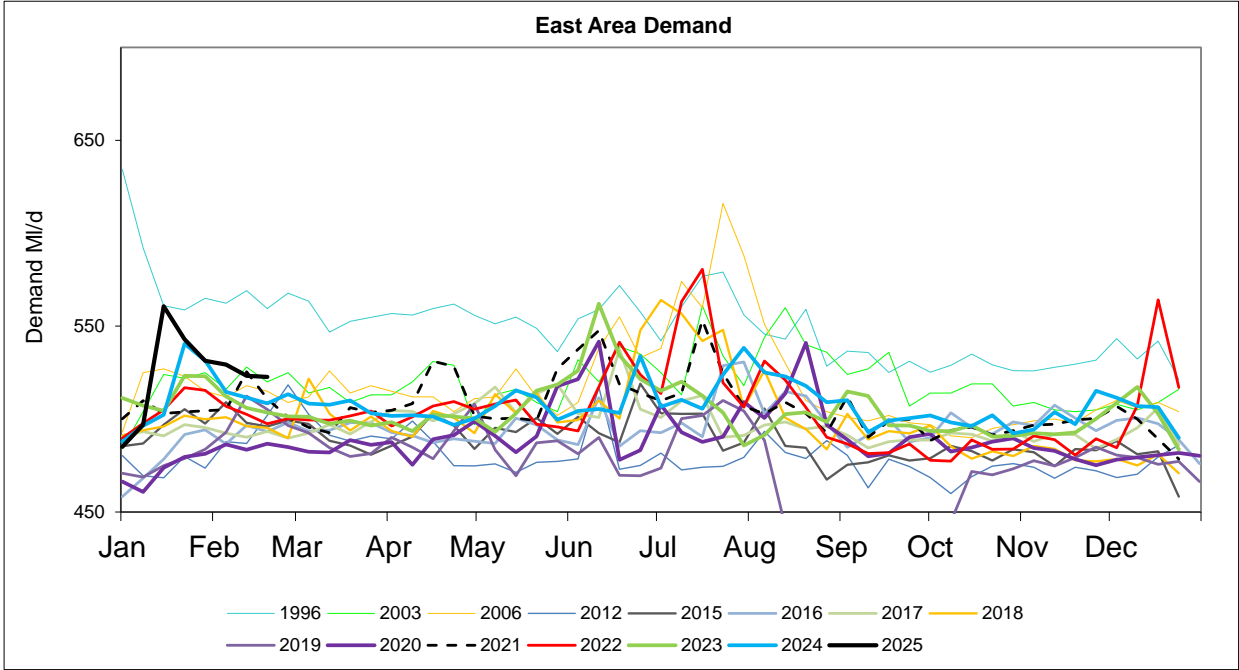
Week Ending Wednesday	L E D S	W A K E + R F I E L D	M O R E Y	S E L B Y	H A R R O G A T E	H U L L	M A L L T O N	S H E F F / B L Y	D O N C A S T E R	B R A D F O R D	C A L D E R	S K I P T O N	Y O R K A R E A	R E G I O N
22/01/2025	184	86	46	84	165	56	297	88	163	169	43	53	1434	
29/01/2025	183	84	44	81	161	53	299	86	156	165	40	54	1406	
05/02/2025	180	82	43	79	162	55	292	85	153	163	41	53	1389	
12/02/2025	178	81	41	78	161	54	291	83	150	161	41	53	1372	
19/02/2025	179	81	42	79	157	55	286	83	148	160	41	53	1365	

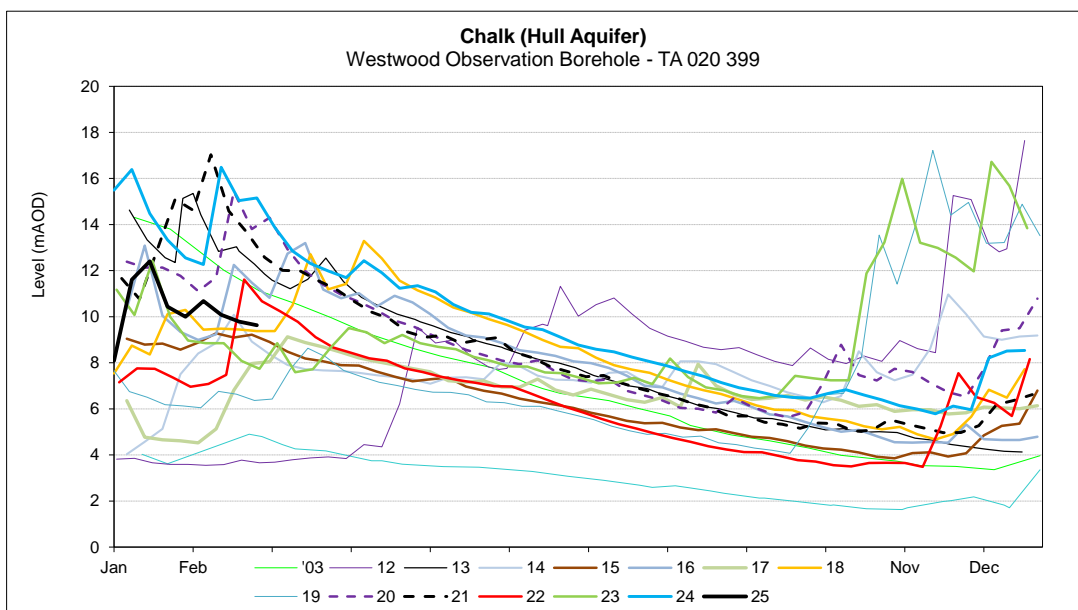
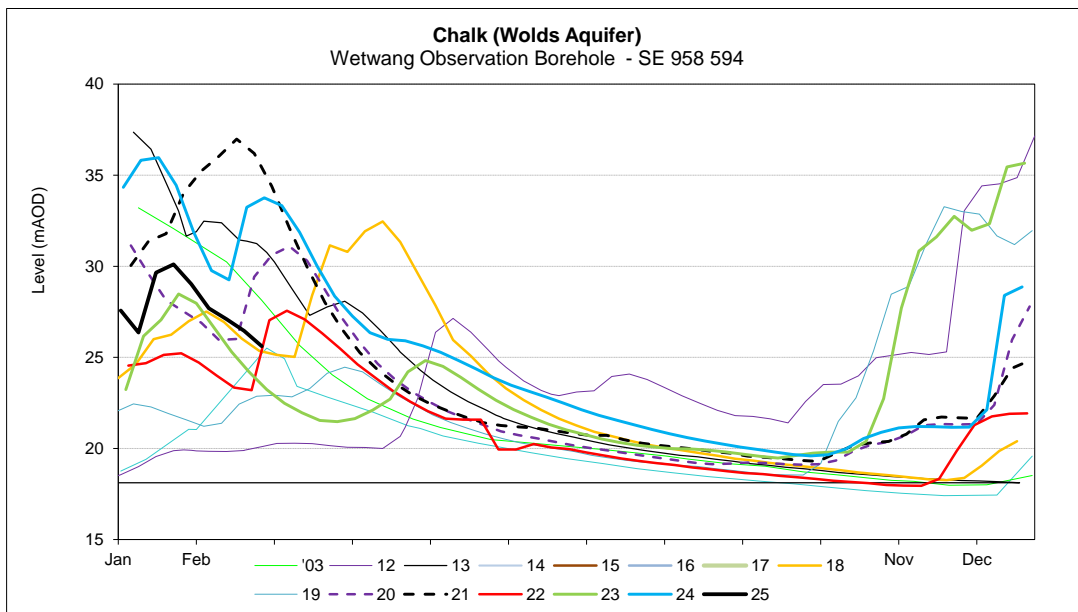
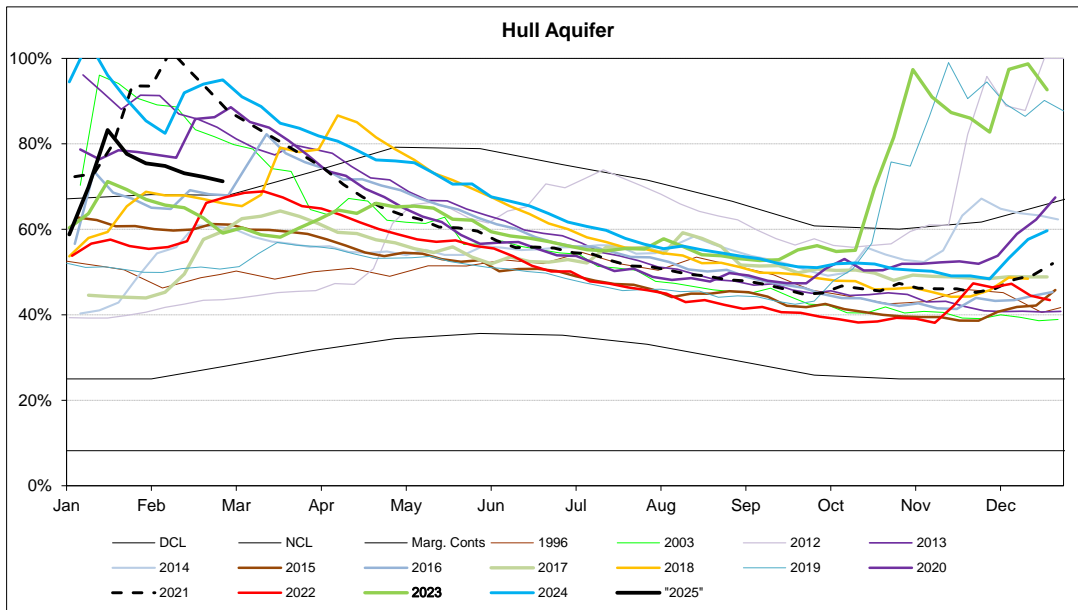
MONTHLY DEMANDS FROM WIS REPORT

Dec-24	163	69	39	70	156	52	280	73	147	149	37	48	1281
Jan-25	176	84	43	75	160	55	295	78	159	153	40	52	1371

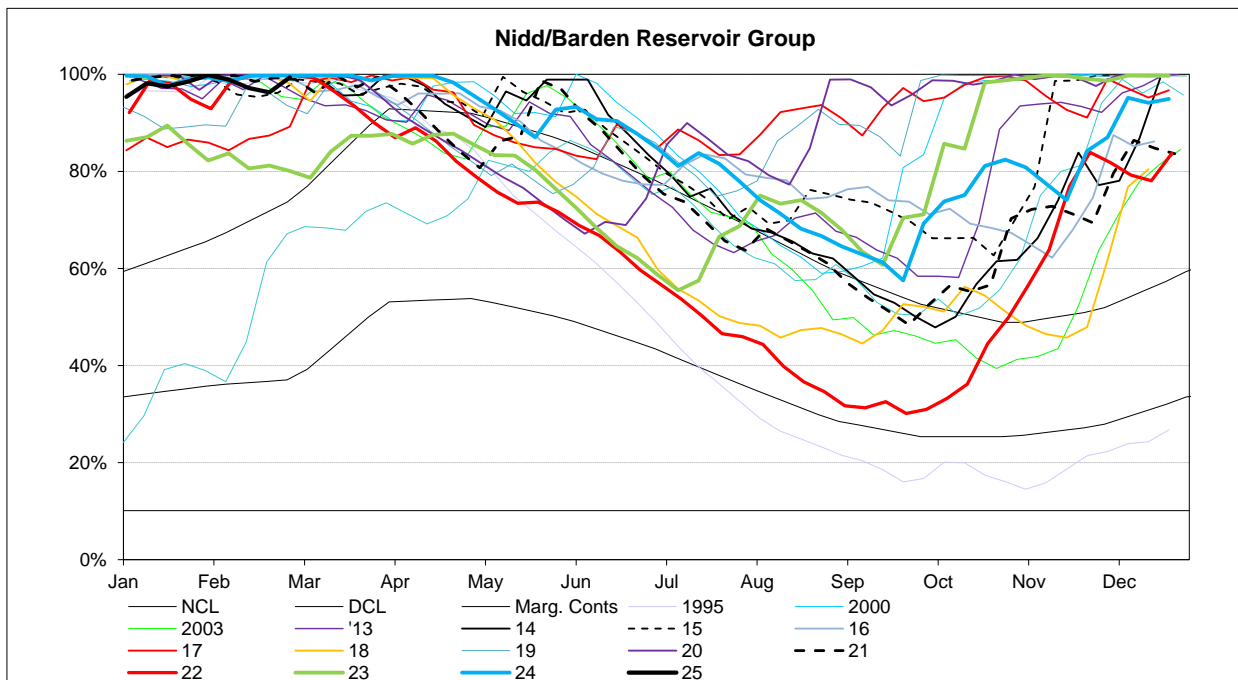
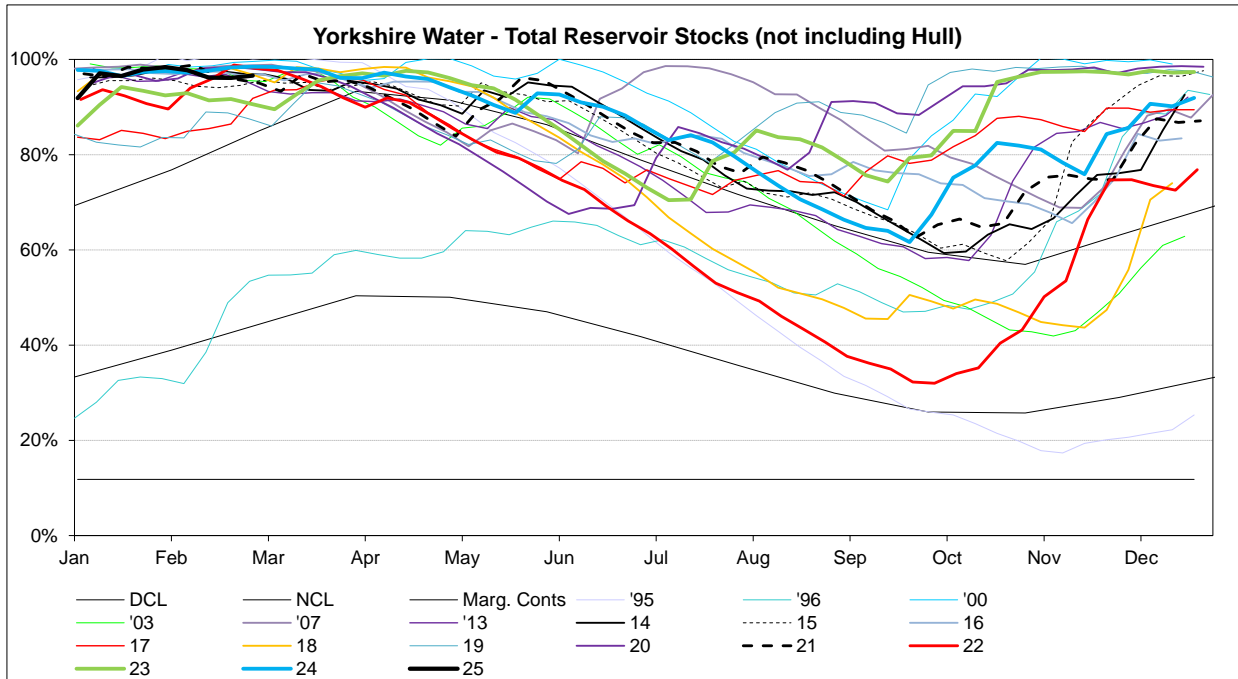
NB Current month demands include some estimates for minor sources and are not exactly comparable with previous months' figures.

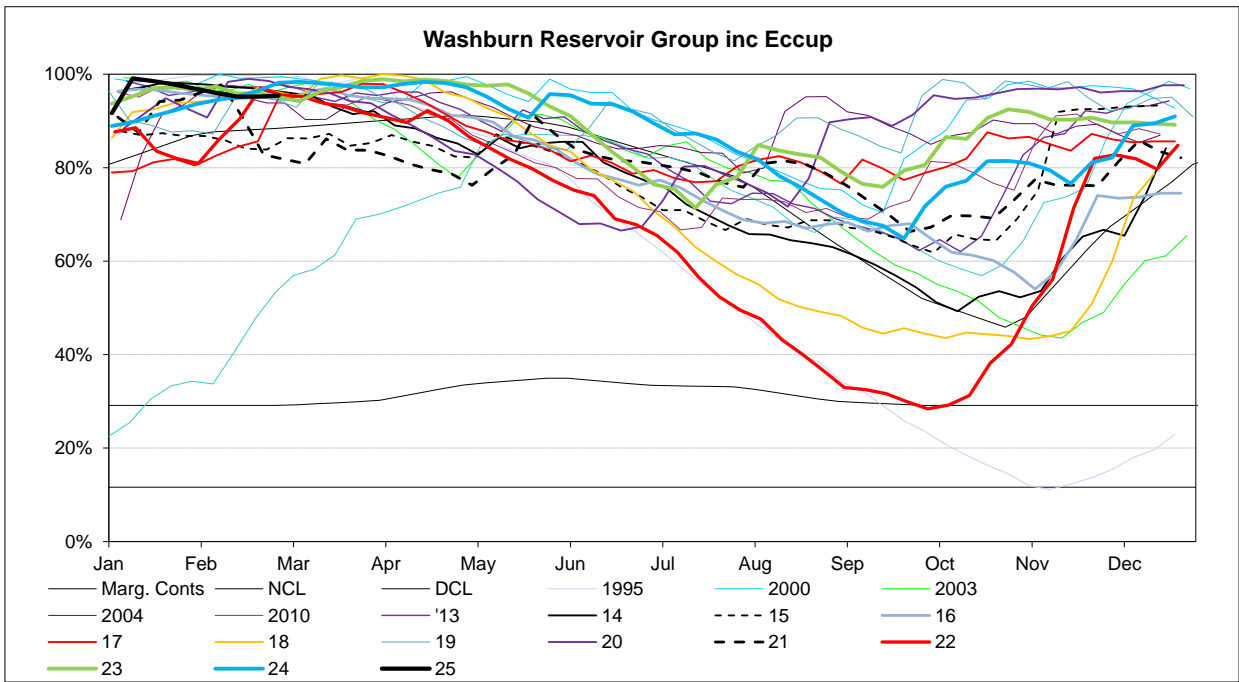
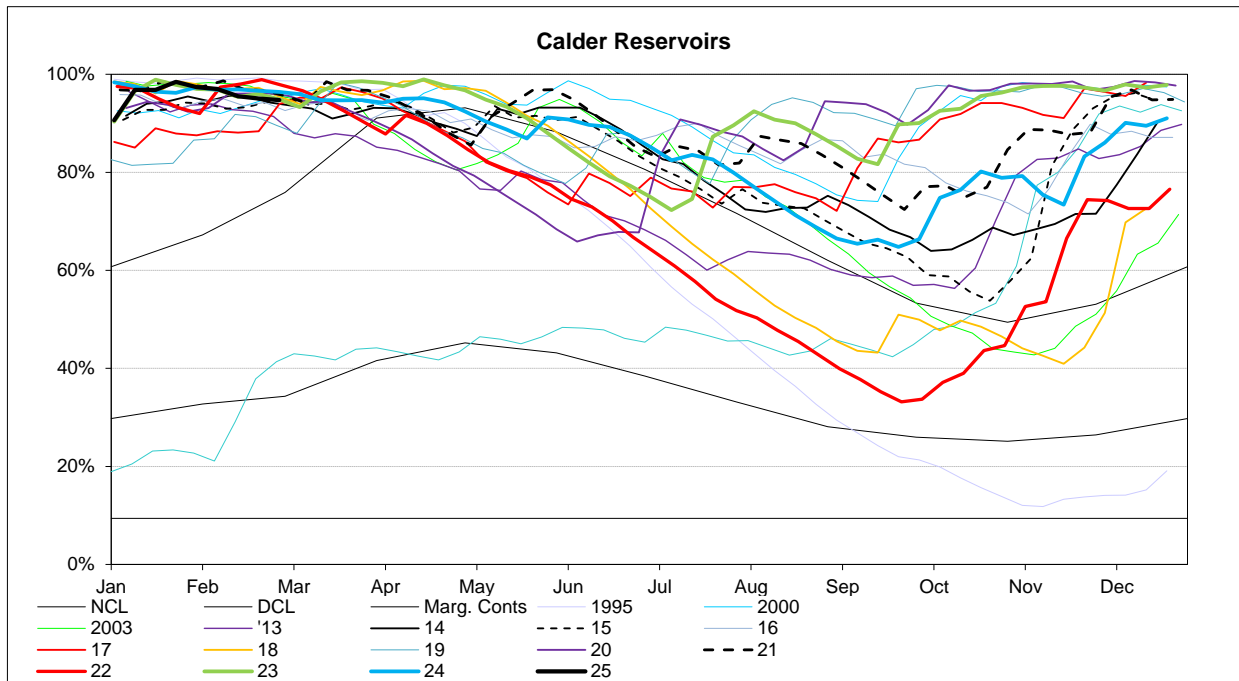




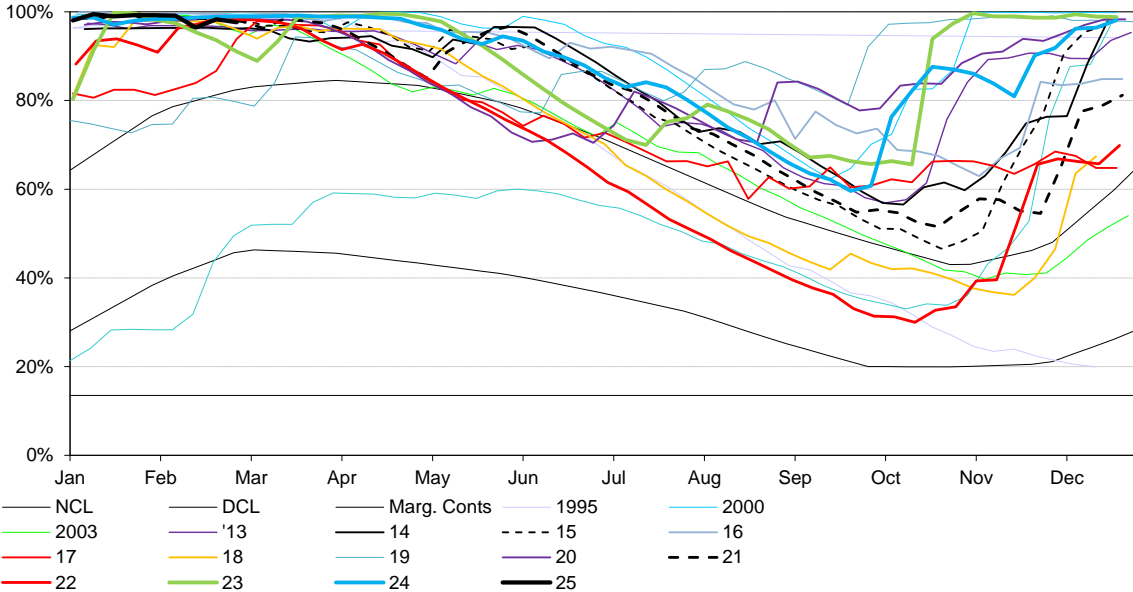


RESERVOIR STOCKS	24/02/2025		% Change	Planned Reservoir Safety Work Reason for Drawdown	Required Drawdown & Duration	
Reservoir Group	% Stocks @	% Change	last week			
Calderdale (excl Withens Clough)	96.4%	-0.2%	-2.0%			
Boothwood/Ryburn ( incl WC)	94.7%	0.1%	0.5%			
(Gorpley)	75.2%	4.3%	-1.7%			
Huddersfield	92.7%	-0.7%	-0.3%			
Brownhill/Digley	96.5%	-0.8%	-0.4%			
Riding Wood	100.0%	0.0%	0.0%	Leakage Investigation	Aug 24 - Apr 25	82.0%
Walshaw Dean Lower	100.0%	0.0%	0.0%	OSA Repairs	Apr 25 - May 25	86.0%
Widdop	87.7%	-1.3%	-8.2%	Increase Drawdown Capacity	May 25 - June 25	21.0%
Widdop	87.7%	-1.3%	-8.2%	Increase Drawdown Capacity	June 25 - Aug 25	10.0%
Brownhill	99.8%	-0.2%	0.0%	Leakage Investigation	Apr 25 - Sept 25	51.0%
Longwood Comp IRE	N/A	N/A	N/A	Spillway Grouting	TBC	40.0%
Longwood ESR	N/A	N/A	N/A	Pipework Painting	TBC	76.0%
<b>Calder Area Total</b>	<b>94.7%</b>	<b>-0.3%</b>	<b>-0.5%</b>			
Nidd/Barden/Chelker	99.4%	3.1%	-0.9%			
Grimwith	98.4%	-0.7%	-0.7%			
Worth Valley	97.5%	0.1%	-0.9%			
March Ghyll	85.2%	1.8%	1.8%	Embankment Stability Works	Jan 23 - Dec 24	86.0%
Ponden	100.0%	0.0%	0.0%	Repair Ground Anchor	Aug 24 - Mar 25	87.6%
Chelker	93.1%	-1.6%	1.6%	Pointing	Nov 24 - May 25	34.0%
Chelker	93.1%	-1.6%	1.6%	Pointing	Nov 24 - May 25	78.0%
<b>North West Area Total</b>	<b>98.6%</b>	<b>1.0%</b>	<b>-0.7%</b>			
Washburn/Eccup Resrs.	95.4%	0.1%	0.0%			
Thornton Steward	94.3%	0.7%	0.7%			
Leighton/Roundhill	100.0%	0.8%	-0.8%			
Haverah Park	99.3%	-0.2%	14.5%			
Swinsty	95.1%	-0.3%	-0.1%	Outlet Channel Repairs	Dates tbc	93.0%
Thruscross	100.0%	0.0%	0.0%	Bridge Repairs	Dates tbc	TBC
Cod Beck	100.0%	0.0%	0.0%	Inspection of Overflow and Upstream Face	Aug 24 - Mar 25	83.0%
Randy Mere	N/A	N/A	N/A	Upstream Face Repairs	TBC	17.0%
<b>North Area Total</b>	<b>96.1%</b>	<b>0.3%</b>	<b>1.2%</b>			
Don Valley & Winscar	96.3%	0.2%	0.7%			
Rivelin Valley	92.2%	-1.5%	4.6%			
Little Don	96.3%	-1.3%	0.7%			
Ewden Valley	100.0%	0.0%	0.0%			
Loxley Valley	100.0%	0.0%	31.6%			
Redmires	88.7%	-1.8%	-1.0%			
Redmires Upper	91.3%	0.0%	-0.3%	Damage to Overflow Channel	Nov 23 - Oct 25	98.0%
Redmires Middle	74.7%	-6.4%	-2.9%	Damage to Overflow Channel	Nov 23 - Oct 25	89.0%
Redmires Middle	74.7%	-6.4%	-2.9%	Issues with Sheet Piles	Feb 25 - Oct 25	95.0%
Broomhead	100.0%	0.0%	0.0%	Install Overflow Debris Barrier	June 24 - Feb 25	95.0%
Strines	100.0%	0.0%	100.0%	Overflow Investigation	Apr 25 -Sept 25	58.0%
Rivelin Upper	100.0%	0.0%	0.0%	Siphon Comissioning	Feb 25 - Mar 25	0.0%
<b>South Area Total</b>	<b>96.9%</b>	<b>-0.6%</b>	<b>8.9%</b>			
Tophill Low	96.4%	-3.0%	5.7%			
Hull Aquifer	65.6%	-6.6%	-0.9%			
<b>East Area Total</b>	<b>66.6%</b>	<b>-6.3%</b>	<b>-0.4%</b>			
<b>Regional Total (DCP) (inc East Area)</b>	<b>93.2%</b>	<b>-0.6%</b>	<b>0.9%</b>			
YORKSHIRE TOTAL (Supply) (not inc East Area)	<b>96.6%</b>	<b>0.2%</b>	<b>-0.1%</b>			





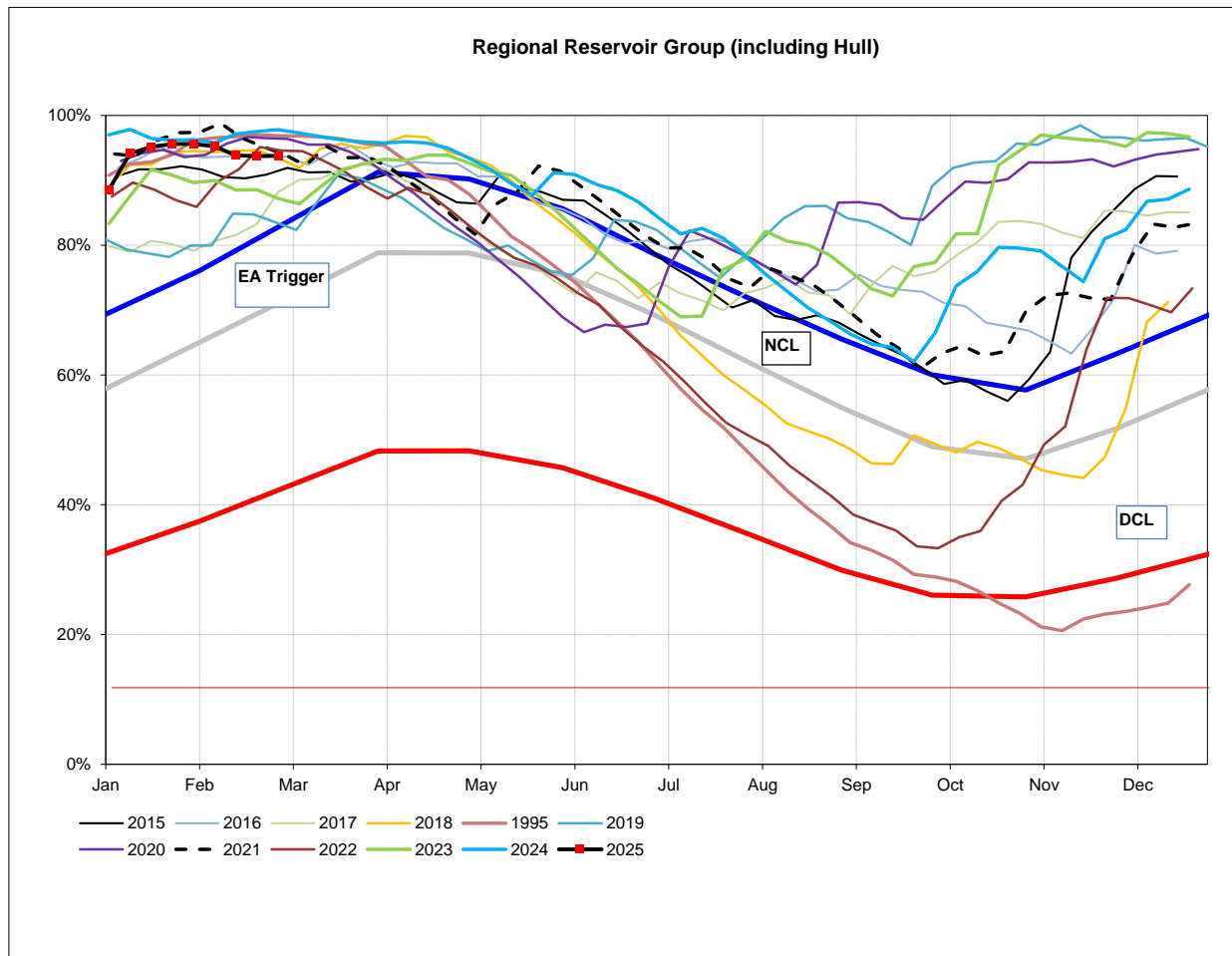
Sheffield & Barnsley Reservoirs



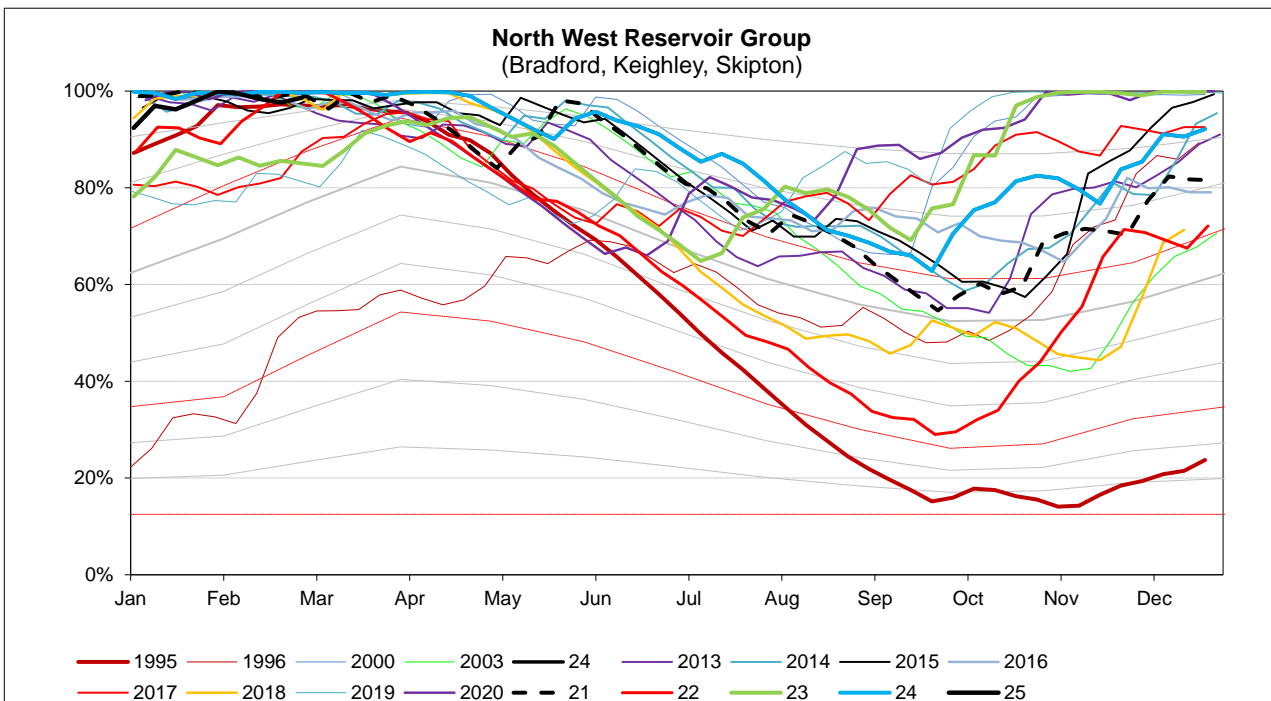
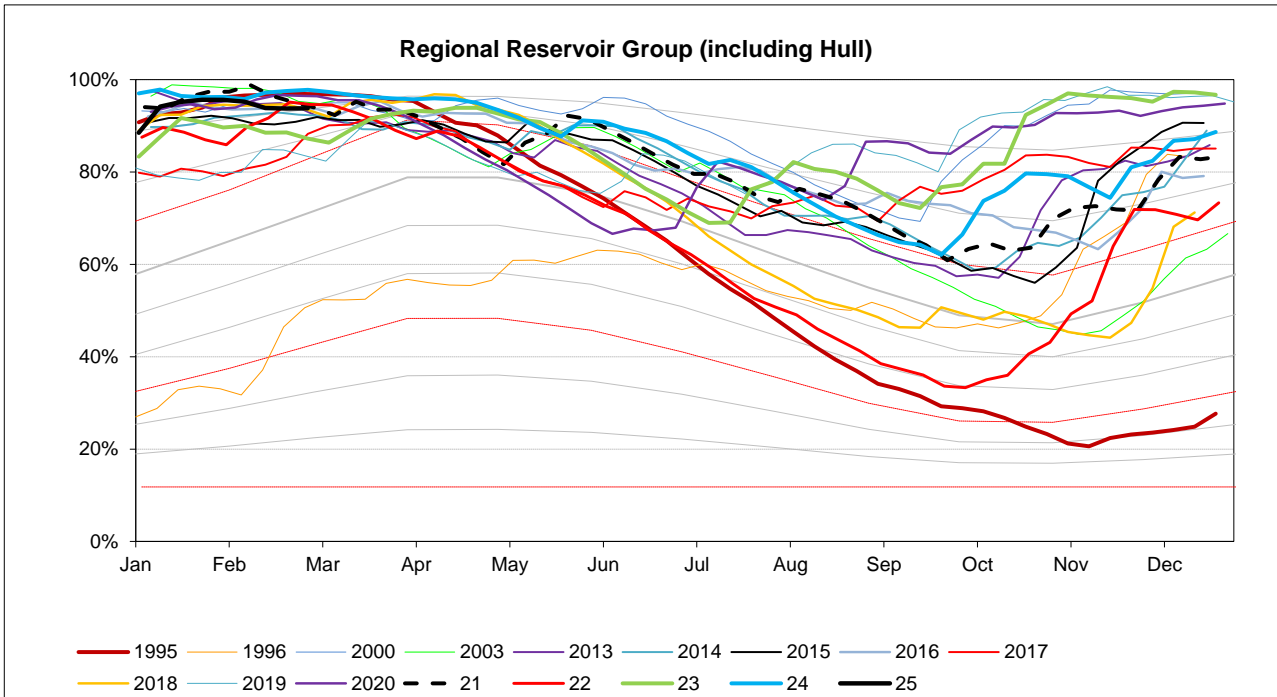
**EA STOCKS REPORT**

**24 February 2025**

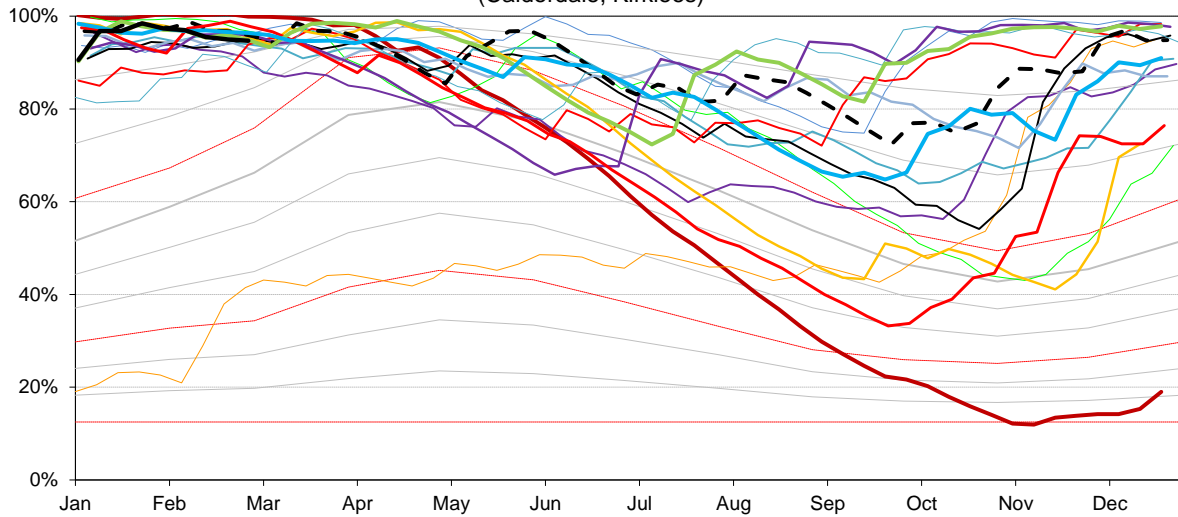
<b>EA Stocks Report</b>	<b>24/02/2025</b>						
	<b>MI</b>	<b>%</b>	<b>% change</b>		<b>MI</b>	<b>%</b>	<b>% change</b>
<b>South West Area Supply Reservoirs</b>				<b>South Area Supply Reservoirs</b>			
Calderdale Group	10740	96.4%	-0.2%	Don Valley	1970	94.7%	0.0%
Huddersfield Group	13085	92.6%	-0.8%	Little Don	7097	96.3%	-1.3%
Brownhill/Digley excl Holmestyes	5406	96.3%	-0.8%	Ewden Valley	4937	100.0%	0.0%
Boothwood/Ryburn	11082	94.7%	0.1%	Loxley Valley	6874	100.0%	0.0%
				Rivelin	752	92.2%	-1.5%
<b>South West Reservoir Group</b>	41704	94.7%	-0.3%	Redmires	2465	88.7%	-1.8%
Bradford Area Supply Reservoirs				<b>South Reservoir Group</b>	24095	96.9%	-0.6%
Gouthwaite	5226	89.9%	12.2%				
Grimwith	21405	98.4%	-0.7%	Winscar Group	9079	97%	0.2%
Nidd/Barden/Chelker	19061	99.4%	3.1%	Compensation Reservoirs			
Rombalds/Thornton Group	2151	96.4%	0.6%	Scout Dike	694	100.0%	1.7%
				Underbank	2867	100.0%	0.0%
Skipton Area Supply Reservoirs				Morehall	2099	96.6%	-3.4%
Embsay	719	99.5%	-0.2%	Damflask	5106	100.0%	0.0%
Worth Valley Group	3230	97.5%	0.1%				
<b>North West Reservoir Group</b>	46566	98.6%	1.0%	<b>North Area Supply Reservoirs</b>			
				Washburn	22293	95.4%	0.1%
Compensation inc Silsden	2314	98.3%	0.0%	Eccup	6158	87.9%	0.7%
Gouthwaite	5226	89.9%	12.2%	Leighton/Roundhill	7401	100.0%	0.8%
March Ghyll & Elslack Reservoirs excluded for consistency with stocks predictions in WRAPSIM				Haverah Park	995	99.3%	-0.2%
				Lumley Moor	381	100.0%	1.7%
				Thornton Steward	894	94.3%	0.7%
East Area Supply Reservoirs							
Tophill Low	1312	77.9%	-3.0%	North Reservoir Group	31965	96.1%	0.3%
Hull Aquifer	12467	65.6%	-6.6%				
				Lindley Wood Compensation	2829	96.9%	-1.7%
<b>East Reservoir Group</b>	13779	66.6%	-6.3%				
				Regional Reservoir Group	167187	93.2%	-0.6%
				(sum of South West, North West, East, South, North & Winscar Reservoir			



Triggers	
EA early warning (CL4)	Water resources to advise EA on production
Hosepipe Restrictions	When projected falling stocks fall below DCL
Drought Orders	When stocks are below DCL.

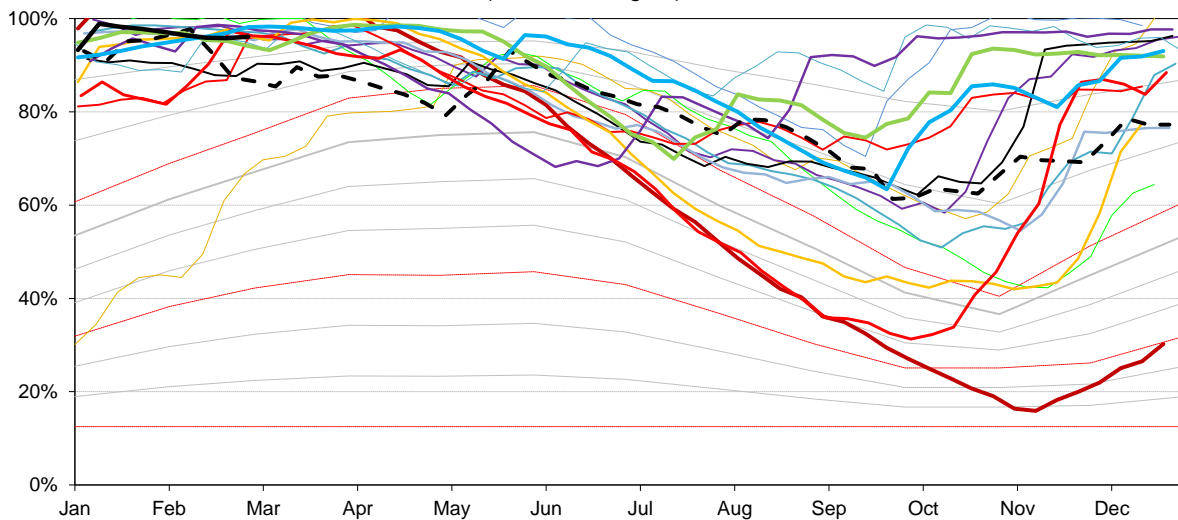


**South West Reservoir Group**  
(Calderdale, Kirklees)

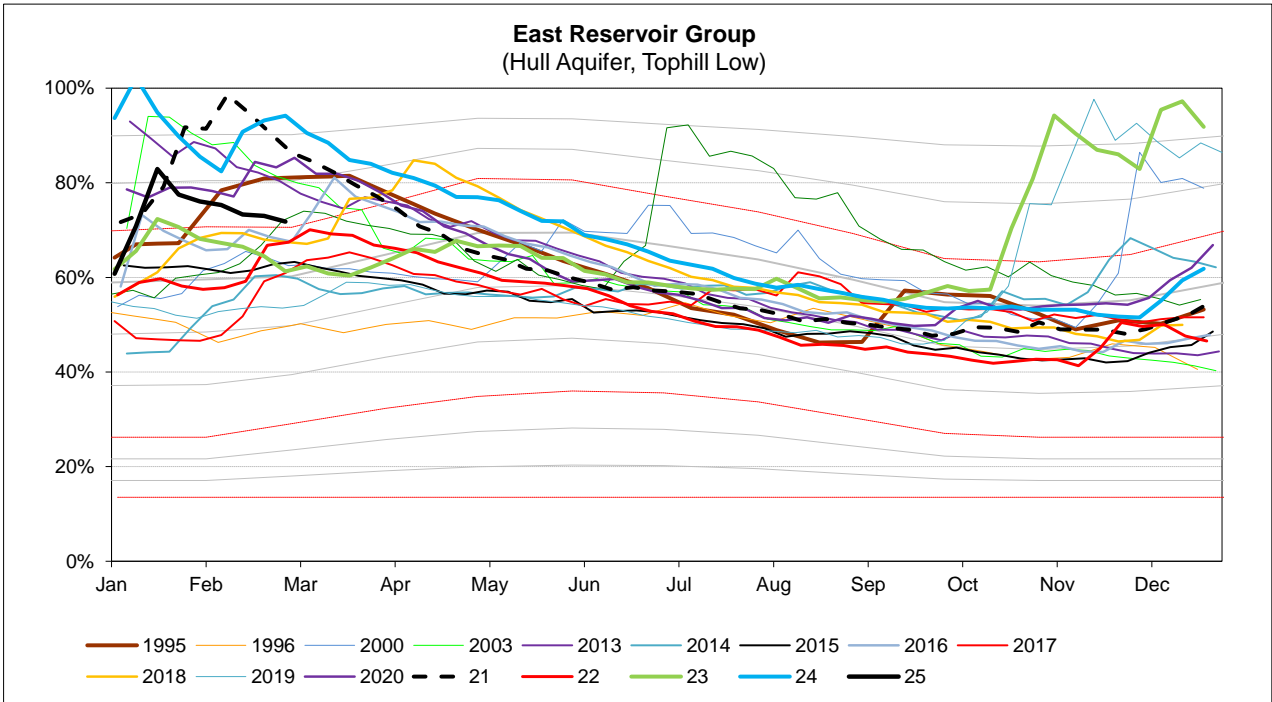
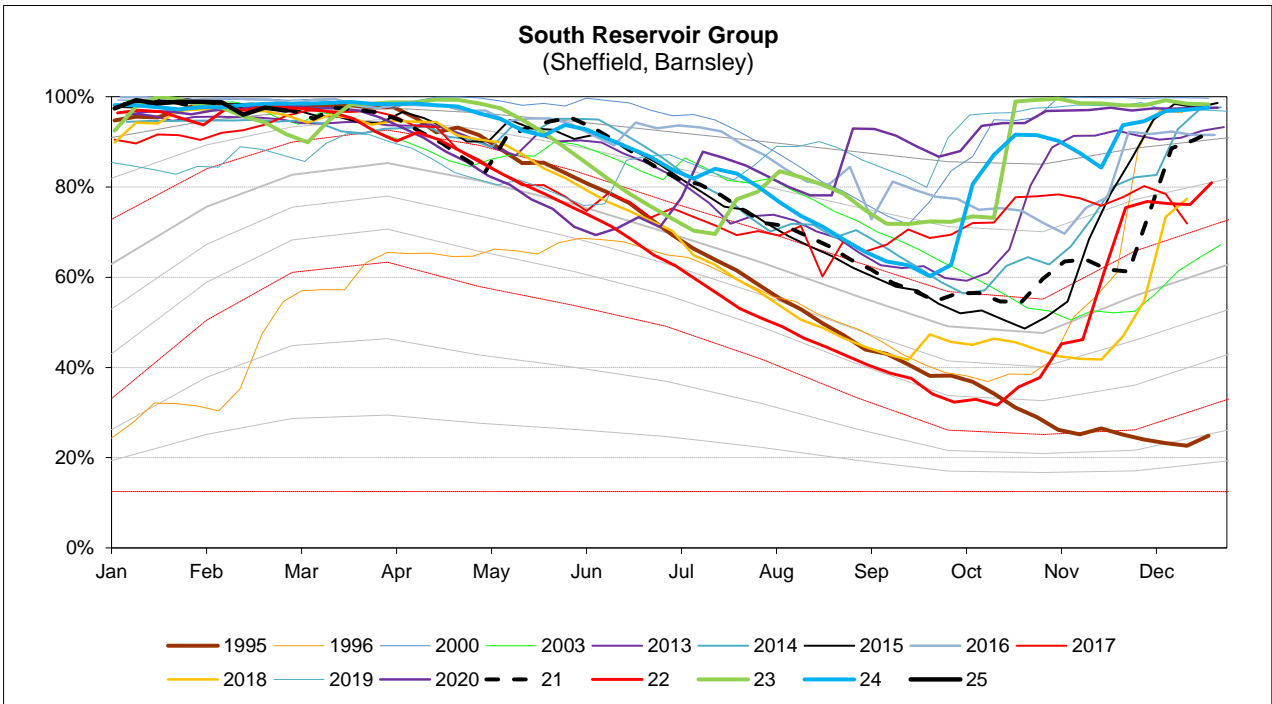


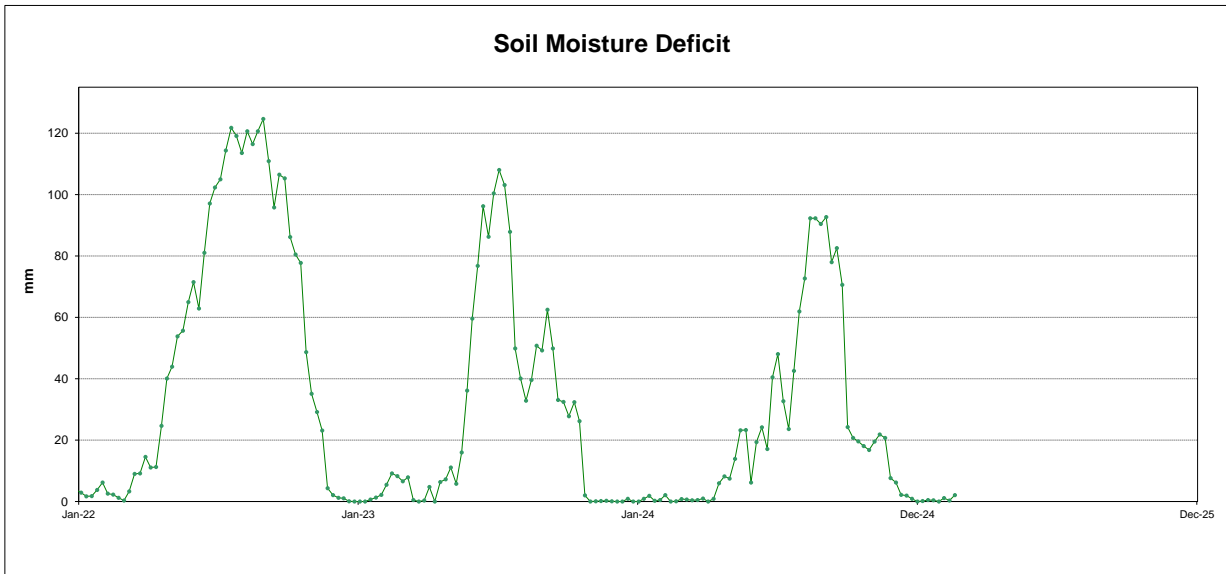
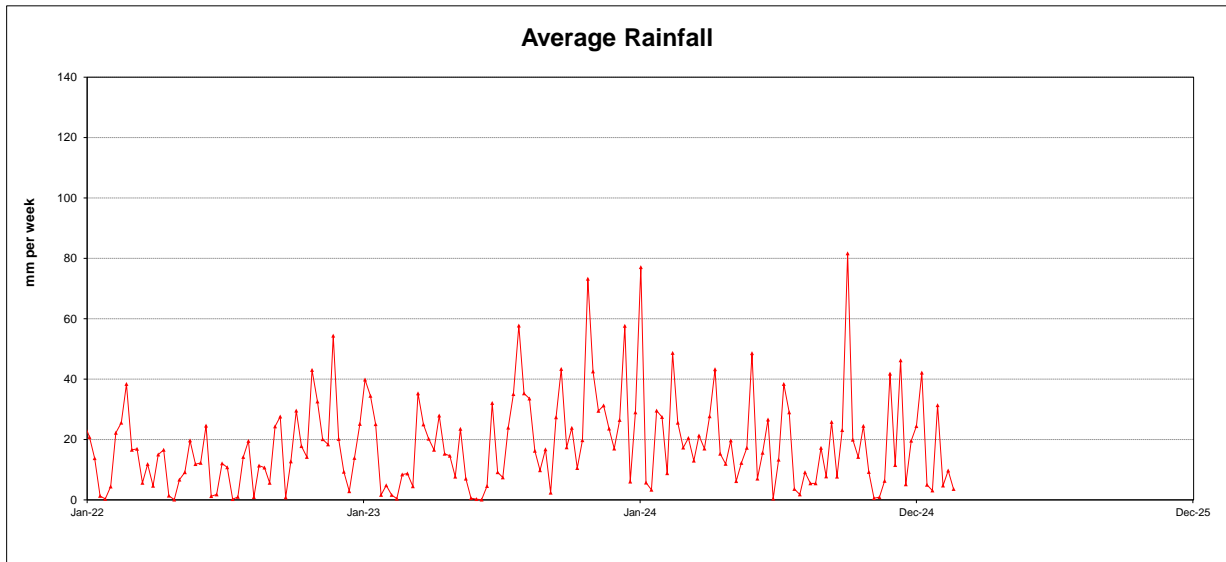
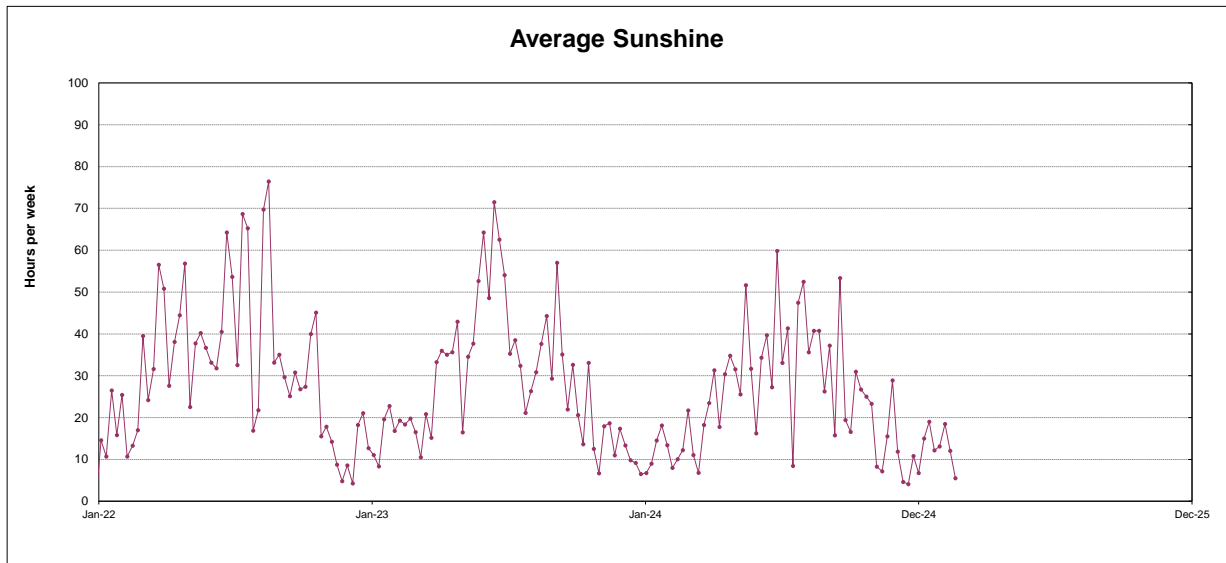
— 1995    — 1996    — 2003    — 2000    — 2013    — 2014    — 2015    — 2016    — 2017  
— 2018    — 2019    — 2020    - - 21    — 22    — 23    — 24    — 25

**North Reservoir Group**  
(Leeds, Harrogate)



— 1995    — 1996    — 2000    — 2003    — 2013    — 2014    — 2015    — 2016    — 2017  
— 2018    — 2019    — 2020    - - 21    — 22    — 23    — 24    — 25





This page will normally be updated monthly (approx mid month).

This data may be subject to change following routine validation checks.

Where showing a negative value, this is normal at certain sources, due to the imports of water into that source being greater than the volumes abstracted.

## Units in MI

Serial No	Source	Reporting Year	January	Year to date MI	Run date	
					Annual Limit	01-Feb-25
02/27/023/332	Ainderby Steeple Boreholes	C	128	128	1760	7.3%
03/28/083/010	Armthorpe Boreholes	C	237	237	3319	7.1%
03/28/083/012	Austerfield Boreholes	C	228	228	11615	2.0%
02/27/022/020	Aysgarth & Newbiggin Springs	C	15	15	341	4.4%
02/27/012/035	Baitings, Ryburn & Blackhouse reservoirs	C	412	412	20457	2.0%
02/27/023/032	Bellerby Borehole and springs near Bellerby	F	65	423	1250	33.8%
02/27/022/209	Birk Gill & River Burn	C	588	588	6400	9.2%
02/27/012/254	Boothwood Reservoir & associated catchwaters	C	230	230	20457	1.1%
02/27/10/112	Boshaw Whams Reservoir	C	0	0	55	0.0%
03/28/083/105	Boston Park Boreholes	C	187	187	3318	5.6%
02/27/024/305	Brayton Barff Boreholes	C	0	0	2250	0.0%
02/26/030/002	Bridlington	C	169	169	2500	6.7%
02/27/005/031	Broomhead Reservoir	F	1070	10250	12410	82.6%
02/26/030/004	Burton Agnes	C	83	83	1000	8.3%
02/27/018/080	Carlton Hanger Lane Boreholes	C	324	324	3500	9.3%
02/27/018/079	Carlton Mill Lane Boreholes	C	159	159	3800	4.2%
02/27/019/009	Carr Bottom Reservoir, Burley Woodhead	C	9	9	409	2.1%
02/27/023/340	Catterick Boreholes	F	214	1970	3650	54.0%
02/27/027/136	Cayton Carr Lane Boreholes	C	48	48	3928	1.2%
02/27/027/163	Cayton Station Road Borehole	C	136	136	2646	5.1%
02/27/019/137	Chelker Reservoir	C	448	448	5000	9.0%
02/27/023/031	Coalsgarth Springs	C	6	6	750	0.8%
02/27/011/064	Colne Valley Catchwaters	F	43	1900	5840	32.5%
02/26/032/126	Cottingham Well	C	1013	1013	18184	5.6%
02/27/018/081	Cowick Boreholes	C	369	369	5250	7.0%
02/27/023/046	Cranehow & Downholme Springs	C	0	0	318	0.0%
02/27/023/030	Crumma, Newsham & Gandale Springs	C	64	64	1364	4.7%
02/27/005/030	Dale Dyke & Agden Reservoirs	F	1051	8778	21412	41.0%
02/27/012/261	Dean Head & Scammonden	F	21	936	3650	25.6%
02/27/19/121	Dib Spring, Hawkswick	C	0	0	27	0.0%
02/26/032/126	Dunswell Well	C	500	500	16593	3.0%
NE/27/025/021	East Ness Boreholes	F	314	2833	5680	49.9%
02/26/031/087	Elmswell Wold Borehole	C	1	1	1273	0.0%
02/27/015/045	Embsay Reservoir	C	142	142	1846	7.7%
02/27/016/196	Esholt Sewage Treatment Works	C	0	0	88	0.0%
02/26/032/124	Etton Boreholes	C	157	157	5100	3.1%
03/28/083/012	Finningley Boreholes	C	308	308	6780	4.5%
02/27/022/328	Fossdale (High Shaw) Springs	C	9	9	227	4.1%
02/27/018/120	Goosehouse Boreholes	F	168	2482	3500	70.9%
02/27/012/043	Gorpley Reservoir	C	0	0	1823	0.0%
02/27/016/022	Graincliffe Reservoir	F	217	1402	2728	51.4%
02/27/012/037	Green Withens Ringstone Res & catchwater	C	395	395	20457	1.9%
02/27/019/051	Greenhow Tunnel (Nidd Aqueduct) Dale Head Intake	C	0	0	214	0.0%
02/27/019/052	Greenhow Tunnel (Nidd Aqueduct) No.2 Access Shaft	C	0	0	6819	0.0%
NE/27/019/005	Grimwith Reservoir to Nidd Aqueduct	F	501	2000	3650	54.8%
02/26/030/003	Haisthorpe Boreholes	C	344	344	5000	6.9%
03/28/083/012	Hatfield Boreholes	C	115	115	3319	3.5%
03/28/083/100	Hatfield Woodhouse Boreholes	C	0	0	3320	0.0%
02/27/029/010	Hazel Head Springs	C	52	52	1162	4.5%
02/27/012/041	Hebden, Luddenden & Hebble Valley Resrs	F	1116	10202	15695	65.0%
02/27/018/077	Heck Boreholes	C	0	0	2489	0.0%
03/28/083/012	Highfield Lane Boreholes	C	427	427	11615	3.7%
02/27/023/685	Hollin Hill Borehole	F	0	17	45	36.8%
02/27/010/063	Holmestyes & Digley Reservoirs	F	257	2485	5840	42.5%

02/27/22/024	Horsehouse Spring, leyburn	C	0	0	33	0.0%
02/27/027/002	Howe Hill Well	F	79	795	1014	78.5%
02/26/031/006	Hutton Cranswick	C	47	47	796	6.0%
02/27/005/012	Ingbirchworth Reservoir & Annat Royd Intake	C	261	261	3637	7.2%
02/27/005/202	Ingbirchworth South Borehole	F	4	43	132	32.5%
02/27/027/058	Irton	C	488	488	8215	5.9%
02/27/21/015	John O'Gaunts and Beaverdyke Reservoirs	C	0	0	1909	0.0%
02/27/014/010	Keighley Moor Reservoir	F	42	330	6951	4.7%
02/27/025/128	Keld Head Boreholes	C	186	186	3319	5.6%
02/26/032/126	Keldgate Boreholes	C	297	297	5819	5.1%
02/26/031/002	Kilham	C	12	12	1818	0.6%
02/27/005/032	Langsett Reservoir	F	1212	10355	17155	60.4%
02/27/022/210	Leighton Reservoir & Spruce Gill stream intake	C	445	445	13184	3.4%
03/28/083/107	Littleworth Borehole	C	0	0	1659	0.0%
02/27/028/270	Loftsome Bridge ASR Borehole No.1	C	0	0	150000	0.0%
02/27/014/009	Lower Laithe Reservoir	F	325	2139	6951	30.8%
02/27/005/011	Midhope Reservoir & Knoll Brook Intake	F	361	2995	17155	17.5%
02/26/034/006	North Newbald	C	0	0	548	0.0%
03/28/083/012	Nutwell Boreholes	C	236	236	4983	4.7%
02/27/019/006	Panorama, Hilltop & Old Reservoirs & Springs	C	31	31	1000	3.1%
02/27/018/078	Pollington Boreholes	C	175	175	5000	3.5%
02/27/014/058	Ponden Reservoir	F	4	935	6951	13.5%
02/27/016/023	Reva Reservoir, Hawkesworth	C	141	141	1364	10.3%
02/27/005/029	Rivelin and Redmires Reservoirs	F	702	3625	8030	45.1%
02/27/028/017	River Derwent at Elvington	F	5456	45266	75000	60.4%
02/27/028/083	River Derwent at Loftsome Bridge	F	1735	20086	30400	66.1%
02/27/029/012	River Esk	C	274	274	7823	3.5%
02/26/031/047	River Hull & West Beck	C	1226	1226	25000	4.9%
02/26/032/194	River Hull for Sewer Cleaning	C	0	0	91	0.0%
02/27/024/078	River Ouse at Acomb	F	903	8411	35000	24.0%
02/27/024/158	River Ouse at Moor Monkton	F	2146	25270	73000	34.6%
02/27/022/214	River Ure at Kilgram Bridge	F	206	3122	15000	20.8%
02/27/020/196	River Wharfe at Arthington	F	7	350	19009	1.8%
02/27/019/129	River Wharfe at Lobwood	F	1393	17962	27392	65.6%
03/28/083/012	Rossington Bridge Boreholes	C	0	0	5172	0.0%
02/27/022/027	Roundhill and Lumley Moor Reservoirs	C	59	59	3500	1.7%
02/27/005/013	Royd Moor Reservoir & Intakes	C	170	170	2955	5.7%
02/27/021/016	Scargill Reservoir	C	112	112	1932	5.8%
02/27/021/092	Scarhouse & Angram Resvrs with tunnel & catchwater	C	3295	3295	38164	8.6%
02/27/15/149	Silsden Beck, Stilling-Basin at foot of Silsden Reservoir Emk	C	0	0	10	0.0%
02/26/032/126	Springhead Well	C	766	766	13638	5.6%
02/27/022/021	Stalling Busk & Marsett Springs	C	0	0	33	0.0%
02/27/022/208	Stock Beck, Carlesmoor Beck & River Laver	C	440	440	3500	12.6%
02/27/023/684	Stubbing Nook Borehole	F	0	13	135	9.6%
03/28/083/012	Thornham Boreholes	C	301	301	6213	4.9%
02/27/016/160	Thornton Moor & Stubden Reservoirs	C	324	324	6214	5.2%
02/27/012/038	Turvin Clough	C	6	6	4014	0.2%
02/27/019/054	Upper & Lower Barden Reservoirs	C	98	98	14223	0.7%
02/27/020/088	Washburn Valley Reservoirs	C	2587	2587	43800	5.9%
02/27/015/041	Watersheddes Reservoir	F	182	1337	6951	19.2%
02/27/016/021	Weecher Reservoir	C	16	16	909	1.7%
02/27/011/065	Wessenden Valley, Blackmoorfoot & Deerhill	F	1094	8029	12410	64.7%
02/27/023/034	West Stonesdale (Garland Hill) Springs	C	0	0	282	0.0%
02/27/015/042	Whinney Gill & Jenny Gill Reservoirs	C	7	7	377	1.7%
02/27/005/026	Winscar, U & L Windleden, Harden & Snailsden	F	197	6391	10140	63.0%
02/27/012/036	Withens Clough Resr & Catchwater	C	235	235	3319	7.1%
02/27/010/011	Yateholme, Riding Wood, Ramsden & Brownhill	F	279	2587	6820	37.9%

Licences with Aggregated Annual Quantities	Reporting Year	January	Year to date MI	Annual Limit	% of Annual Limit
Baitings, Ryburn, Boothwood, Green Withens	C	1038	1038	20457	5%
Langsett, Midhope	F	1572	13351	17155	78%
Worth Valley	F	554	4741	6951	68%

River Derwent (Elvington, Loftsome)	F	7191	65352	94841	69%
Cayton, Irton	C	672	672	10700	6%
Selby Boreholes	C/F	1196	3510	25283	14%
Doncaster Wellfield	C	2039	2039	30295	7%
Doncaster Sub Group	C	1616	1616	26049	6%
Austerfield & Highfield Lane	C	655	655	9956	7%
Hull Groundwater Sources	C	2576	2576	32850	8%

**Third Party Agreements (Calendar Year)**

Source	Reporting Year	Units in MI		Run date	01-Feb-25
		January	Year to date MI	Annual Limit	% of Annual Limit
CRT, Hudds Narrow Canal	C	4	4	1273	0%
Severn Trent Ladybower Reservoir	C	1591	1591	21550	7%

**Reading date: 02-Jan-25**

	Reporting Year	Year to date MI	Annual Limit	% of Annual Limit
Winscar To Langsett Transfer Usage	F	1480	2482	60%