

## WATER SITUATION REPORT

---

### 1. Rainfall

The Yorkshire Region Has Received 15.9% of LTA for April

### 2. Reservoirs (surface water supply reservoirs not including Hull)

Over the Past Week Our Reservoir Stocks Have Decreased By -3.10% To 76.4%

### 3. Rivers

Some of Our Rivers are Below Critical Level

### 4. Demand

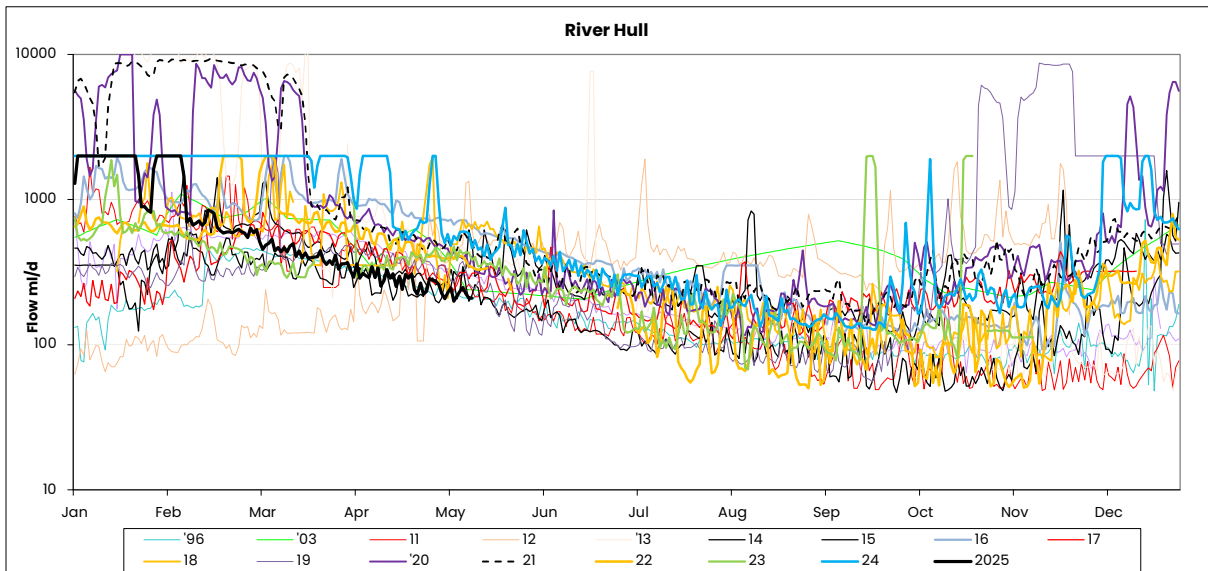
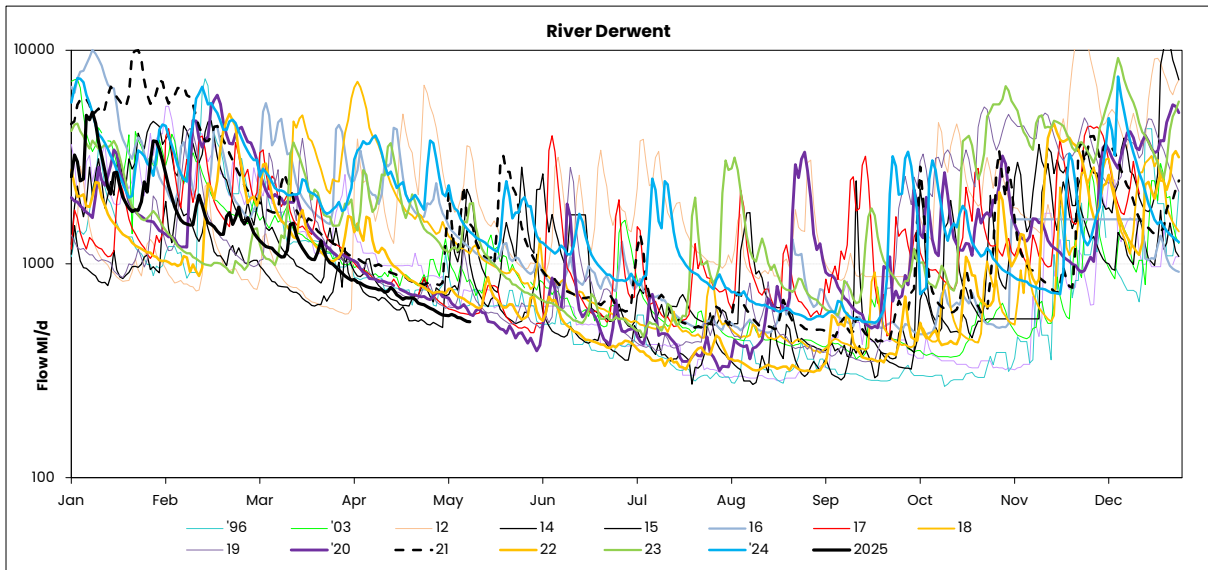
Regional Demand = 1325. Ml/d (including York)

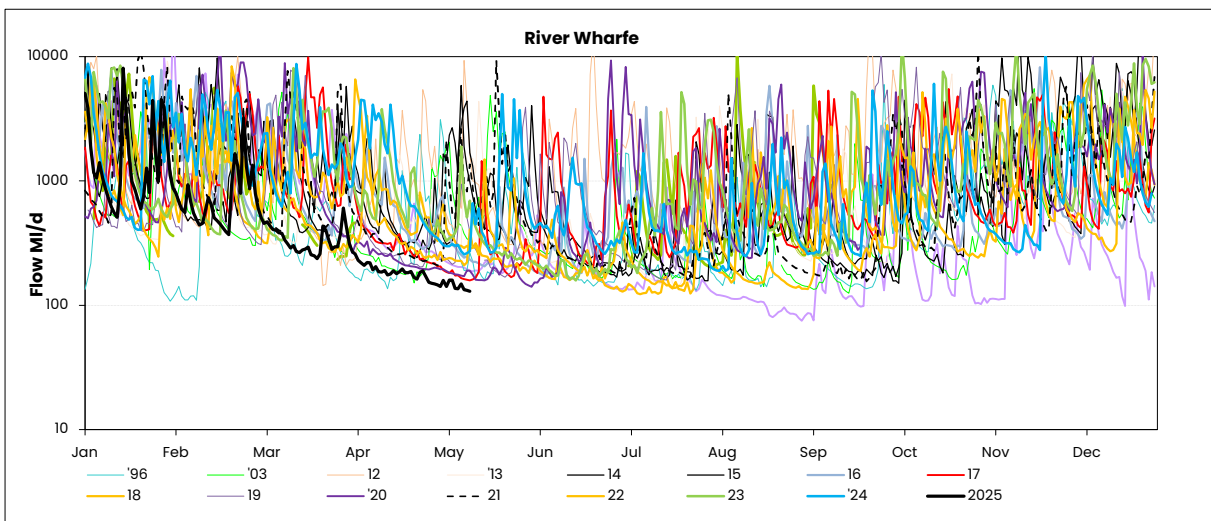
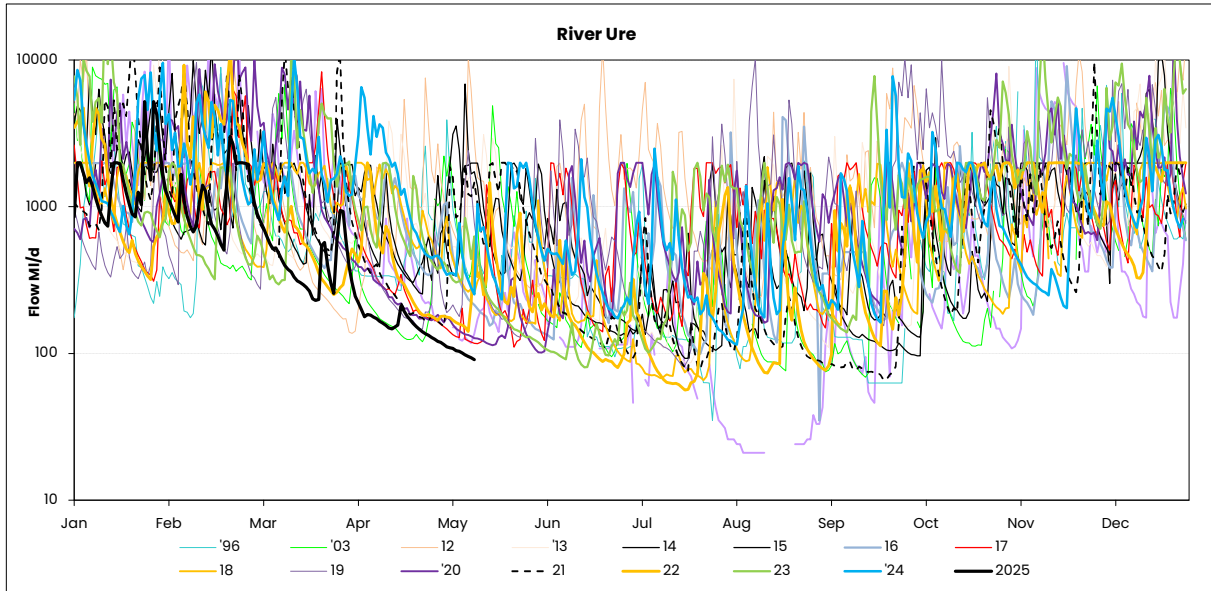
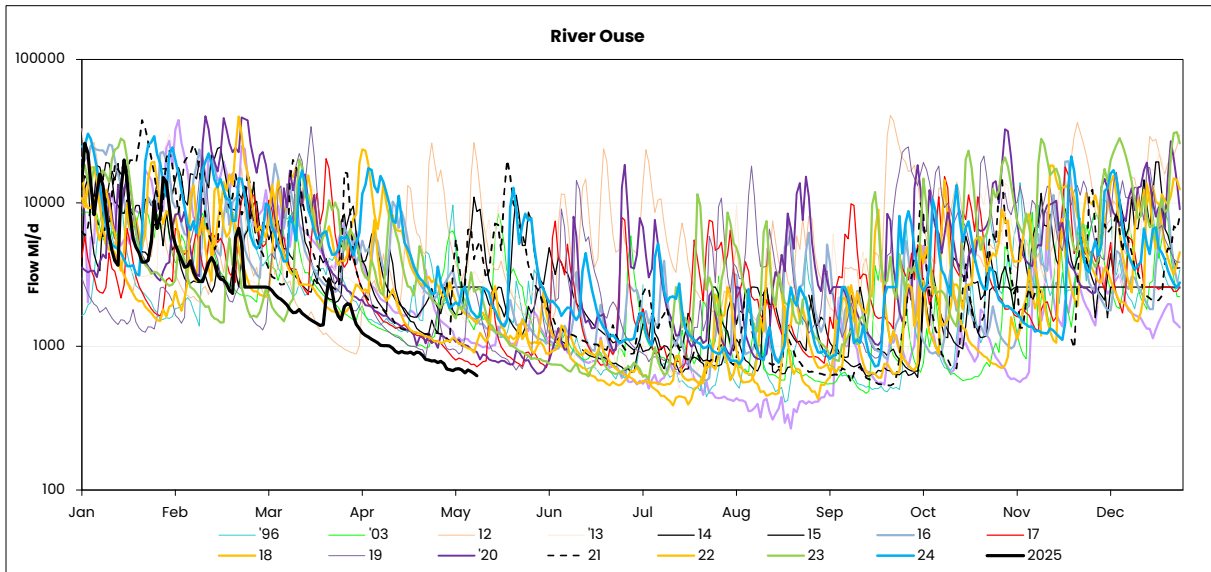
### 5. Comments

**RIVER FLOWS**

**28 April 2025**

	<b>Mon 28-Apr</b>	<b>Mon 21-Apr</b>	<b>Mon 14-Apr</b>	<b>Mon 07-Apr</b>	<b>Critical flow bands</b>
Derwent	631	695	737	797	305
Hull (using gauged (residual flows) only from 20	286	288	328	300	45 / 159 / 227
Ouse	798	884	972	1125	400 / 650 / 1000
Ure	128	170	149	184	50 / 163 / 300
Wharfe	⊗ 153	⊗ 182	⊗ 176	⊗ 221	252 / 389 / 488 / 580





Yorkshire Region (Met Office)				England/Wales	
Month	mm	LTA	LTA(%)	mm	LTA(%)
September	118	71	167%	136	183%
October	72	84	86%	96	97%
November	51	89	57%	84	82%
December	108	90	120%	97	93%
January	82	80	103%	100	108%
February	37	70	53%	57	78%
March	26	60	43%	16	25%

**SOURCE OF DATA : Hydrological Summary of Gt Britain, Institute of Hydrology**

Yorkshire Water Services Data			
Rainfall Station	Total April	LTA April	LTA % April
Tophill	NDA	48	0%
Cottingham	NDA	50	0%
Bridlington	16.0	50	32%
Roundhill	8.8	78	11%
Fewston	6.9	70	10%
Osmotherley	3.2	55	6%
Scar House	7.5	94	8%
Watersheddles	14.5	91	16%
Gt Walden Edge	19.5	91	21%
Walshaw Dean	18.4	97	19%
Blackmoorfoot	12.4	82	15%
Ramsden	11.5	108	11%
Redmires	34.5	84	41%
Langsett	8.7	84	10%
<b>YORKSHIRE REGION</b>	<b>13.5</b>	<b>84.9</b>	<b>16%</b>
<b>EAST REGION</b>	<b>9.6</b>	<b>55.0</b>	<b>17%</b>
<b>PENNINE (WEST)</b>	<b>14.4</b>	<b>87.9</b>	<b>16%</b>

NDA= No data available/lack of readings, impacts % LTA for the month  
**SOURCE OF DATA : YWS RAIN GAUGES- weekly, so monthly data may include previous month or miss start of month**

MAJOR SOURCE OUTPUTS

28 April 2025

24/04/2025

	Operational Maxima & Design Yields (Ml/d)	WRAP Targets Week Beginning - 24/04/2025	Daily Average Previous 5 Days Starting - 24/04/2025	WRAP Targets Week Starting - 17/04/2025	Daily Average Week Starting - 17/04/2025
WATER TREATMENT WORKS					
CENTRAL					
ECCUP NO 1 WTW	100	53.0	54	56	52
ECCUP NO 2 WTW	60	44.0	39	44	47
HEADINGLEY	95	63.0	73	63	73
HARLOW HILL	41.5	27.0	25	27	24
THORNTON STEWARD	22.5	19.7	23	20	22
EAST					
EAST NESS	17	8.0	7	8	9
IRTON	23.5	13.0	16	13	15
RUSWARP	12	7.0	8	7	8
TOPHILL LOW	68	40.0	28	40	32
KELDGATE	90	60.0	76	60	64
NORTH WEST					
CHELLOW	175	148.0	147	148	149
GRAINCLIFFE	60	38.0	30	38	39
SLADEN VALLEY	12	8.0	8	8	8
OLDFIELD	10.1	6.0	5	6	5
EMBSAY	25	17.0	20	17	19
SOUTH					
INGBIRCHWORTH	20	20.0	20	20	14
LANGSETT	56	36.0	48	36	47
<b>(TOTAL)</b>	<b>75</b>	<b>56</b>	<b>68</b>	<b>56</b>	<b>61</b>
EWDEN	40	35.0	30	35	30
LOXLEY	40	26.0	37	26	37
<b>(TOTAL)</b>	<b>80</b>	<b>61</b>	<b>67</b>	<b>61</b>	<b>67</b>
RIVELIN	75	64.0	56	64	59
SOUTH WEST					
ALBERT	55	51.0	42	51	45
FIXBY	30	21.0	18	21	17
KIRKHAMGATE	30	17.0	16	17	17
<b>(TOTAL)</b>	<b>115</b>	<b>89</b>	<b>76</b>	<b>89</b>	<b>79</b>
BLACKMOORFOOT	23	20.0	19	20	19
LONGWOOD	32	27.0	17	27	20
<b>(TOTAL)</b>	<b>55</b>	<b>47</b>	<b>36</b>	<b>47</b>	<b>39</b>
HOLMBRIDGE	29	19.0	20	19	20
GRID					
ELVINGTON	260	159	185	159	186
LOFTSOME BRIDGE	110	75	53	75	40

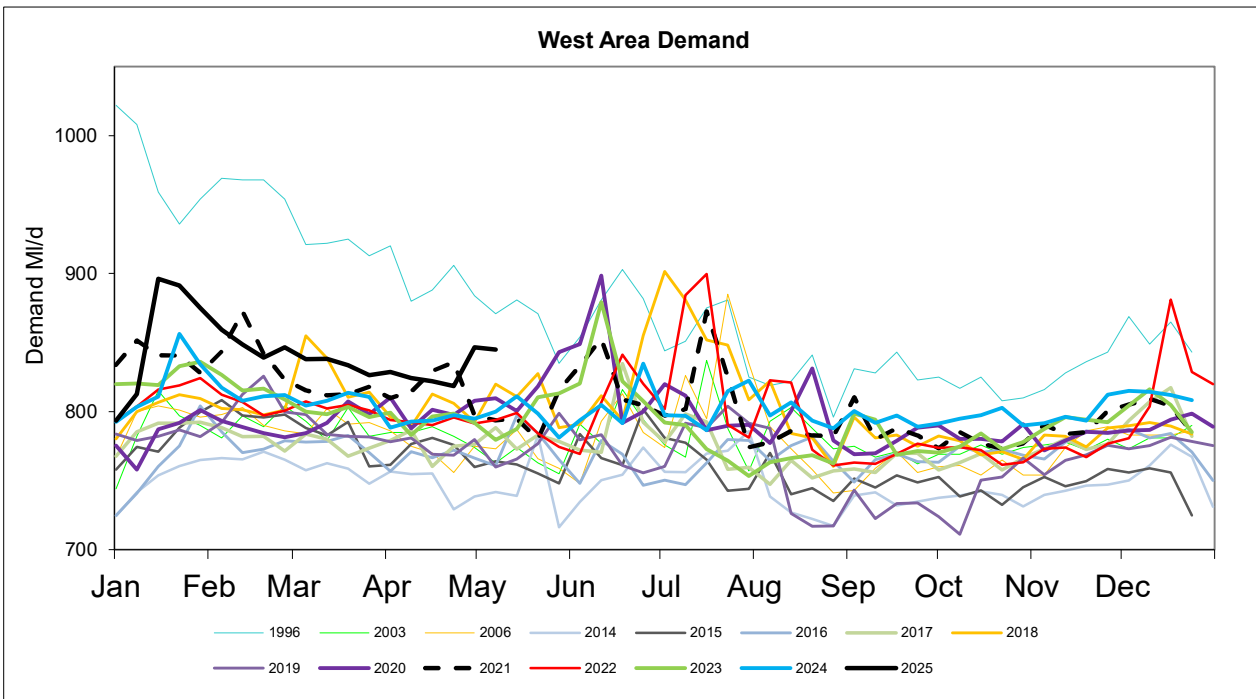
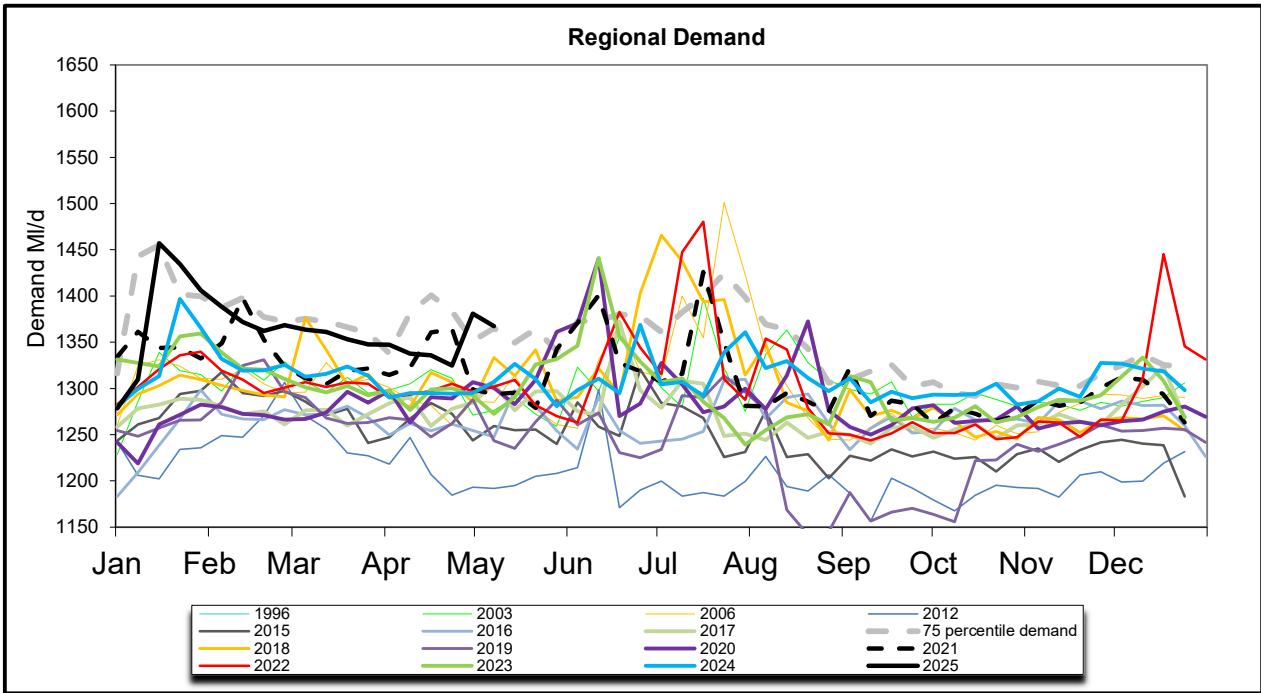
Daily Average Demand MI/d

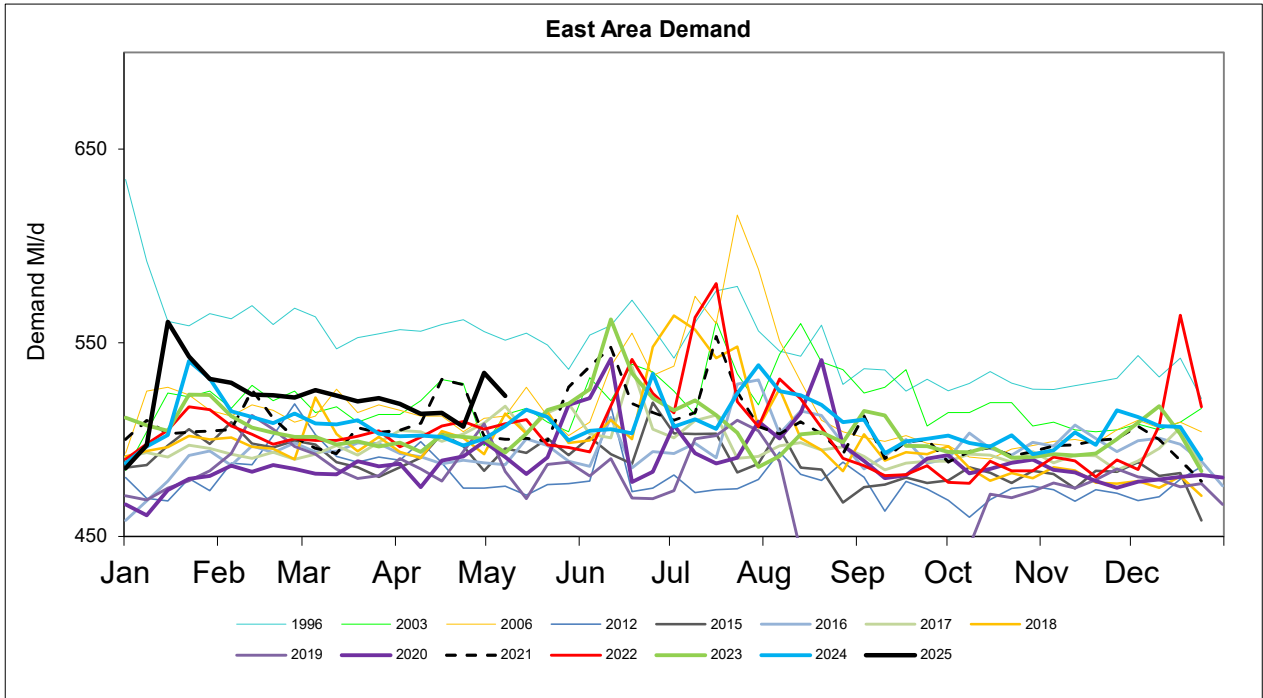
Week Ending Wednesday	L E E D S	W A K E + R F I E L D	M O B Y	H A R O G A T E	H U L L	M A L T O N	S H E F F / B L Y	D O N C A S T E R	B R A D F O R D	C A L D E R	S K I P T O N	Y O R K A	R E G I O N
26/03/2025	175	76	43	80	163	54	281	82	147	157	41	50	1348
02/04/2025	170	78	43	79	167	53	279	83	148	158	40	50	1347
09/04/2025	167	79	42	78	168	53	276	83	147	156	40	48	1337
16/04/2025	168	78	43	78	166	55	277	84	145	154	40	46	1336
23/04/2025	163	79	42	78	162	56	278	83	145	151	39	48	1325

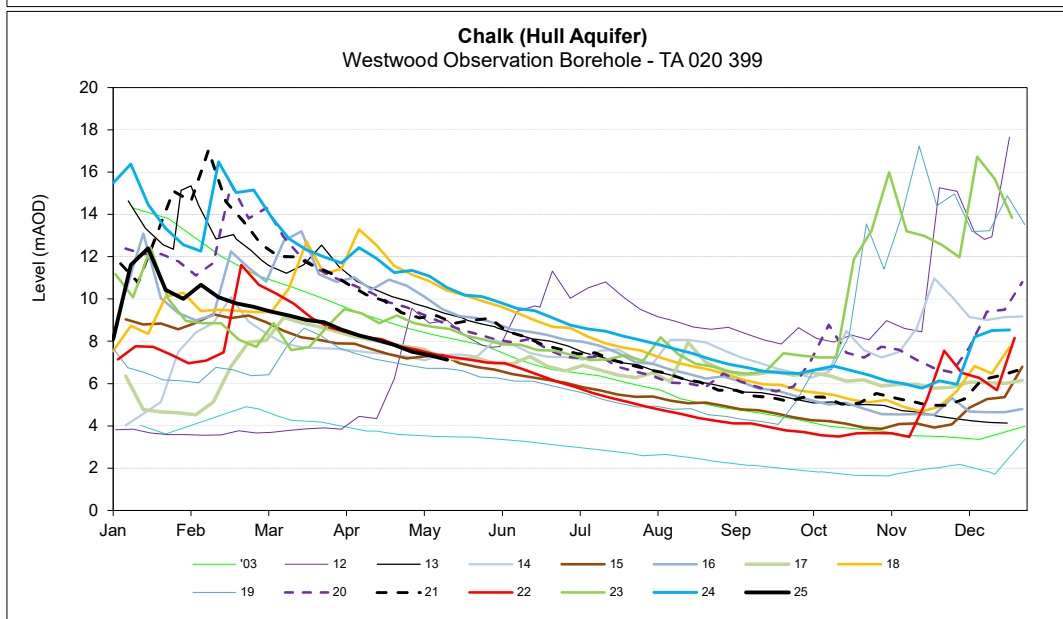
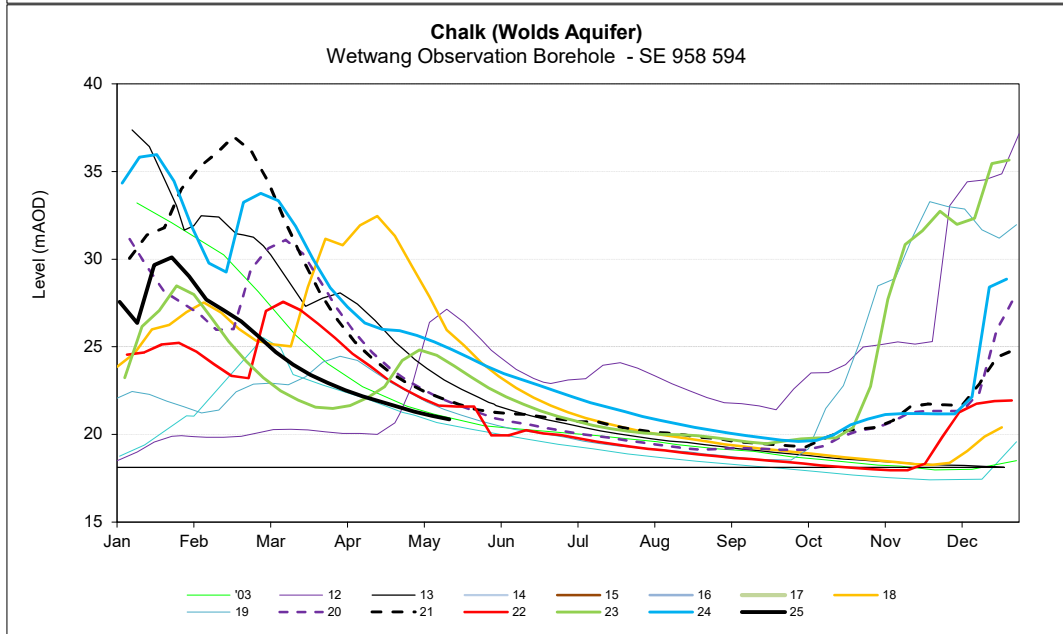
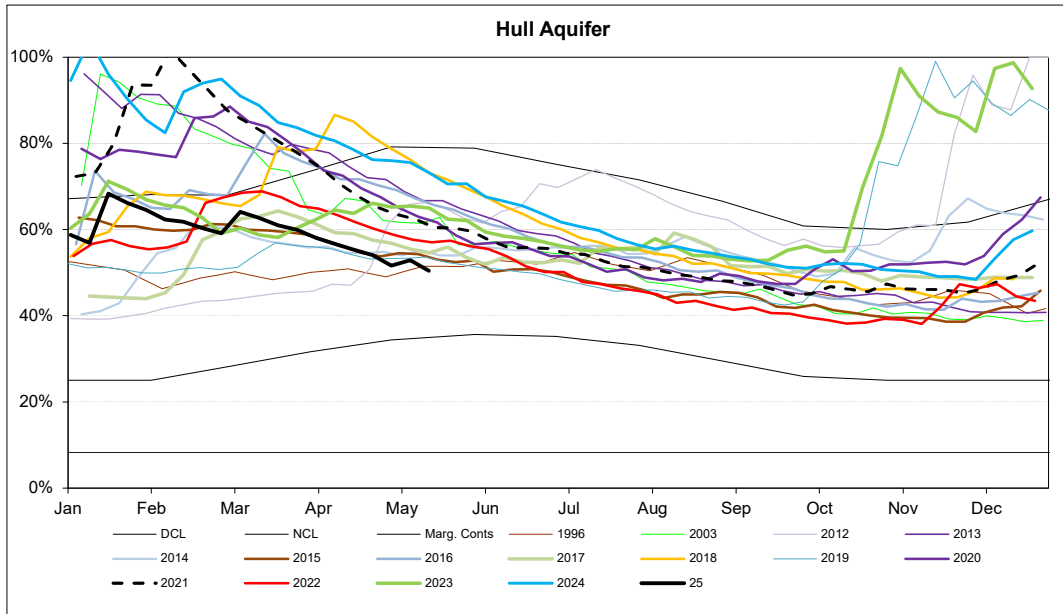
MONTHLY DEMANDS FROM WIS REPORT

Feb-25	178	81	42	79	160	54	290	84	150	161	41	53	1373
Mar-25	175	78	42	80	163	53	283	83	148	158	40	50	1355

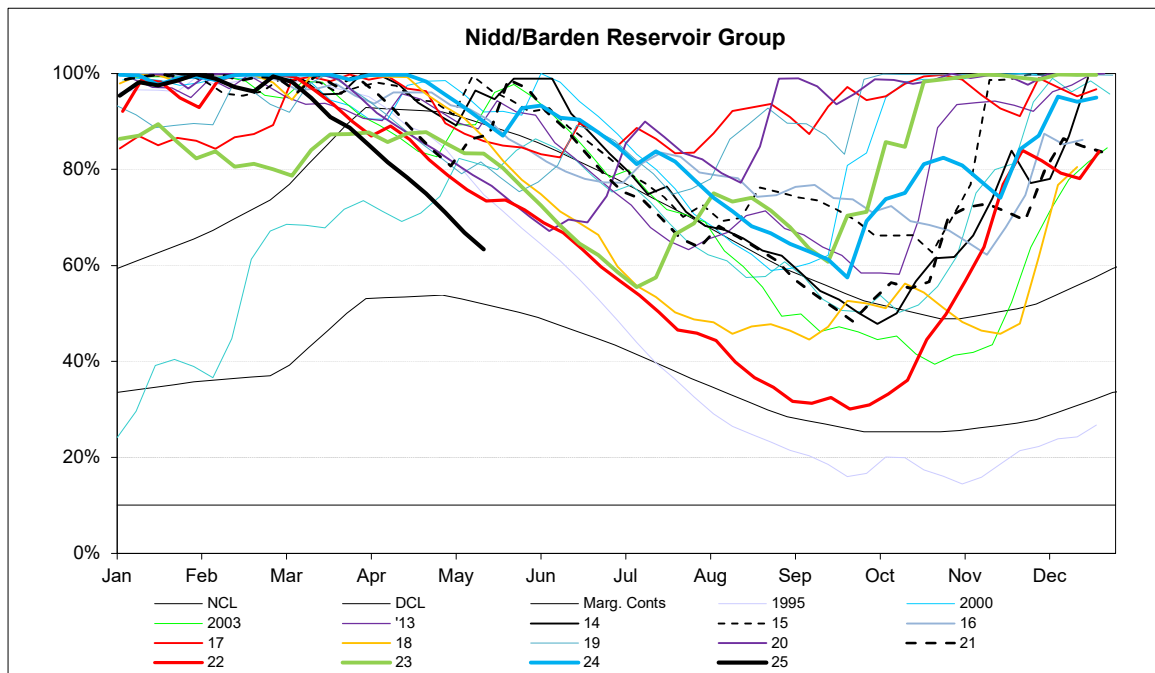
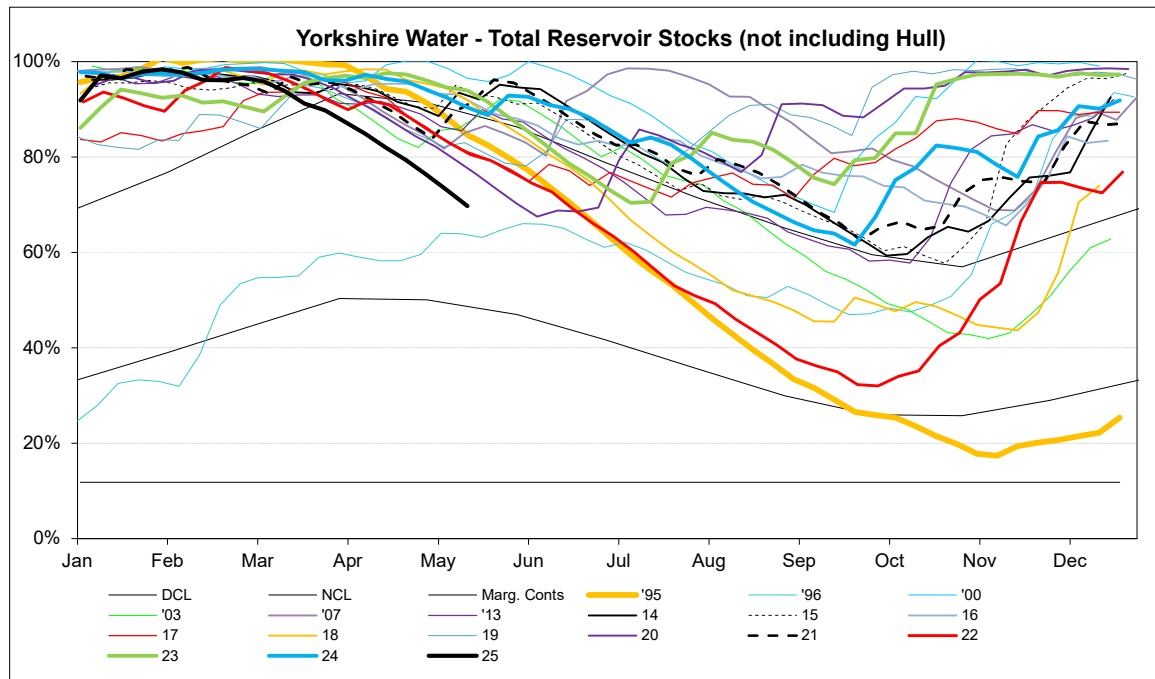
NB Current month demands include some estimates for minor sources and are not exactly comparable with previous months' figures.

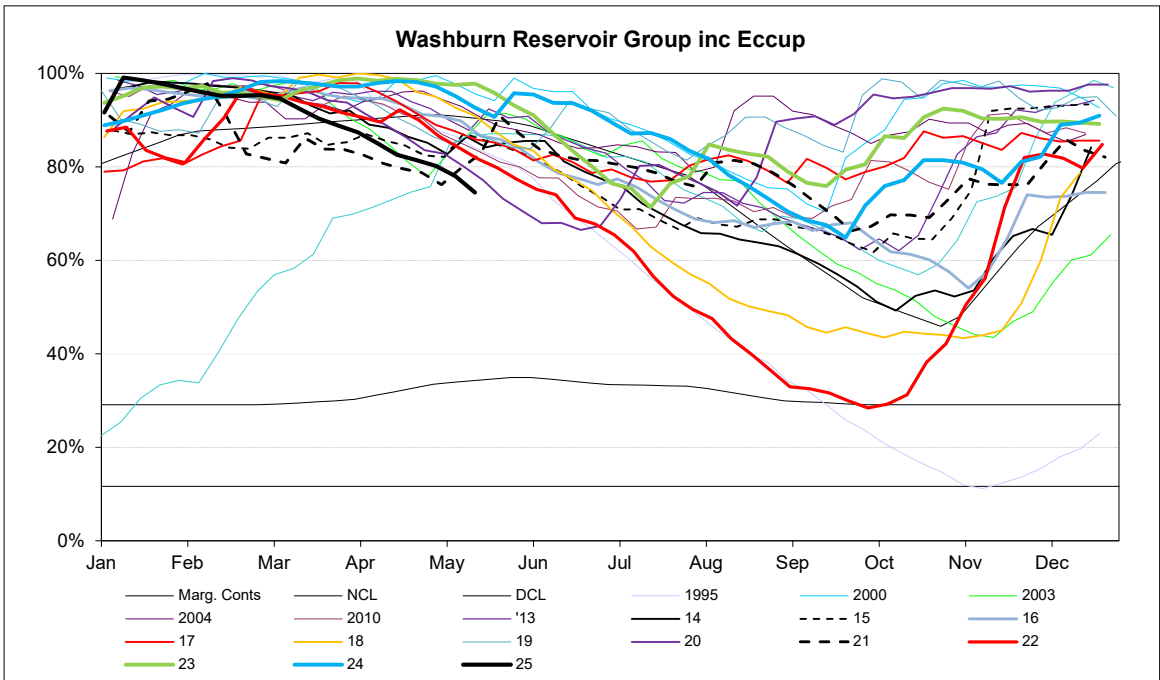
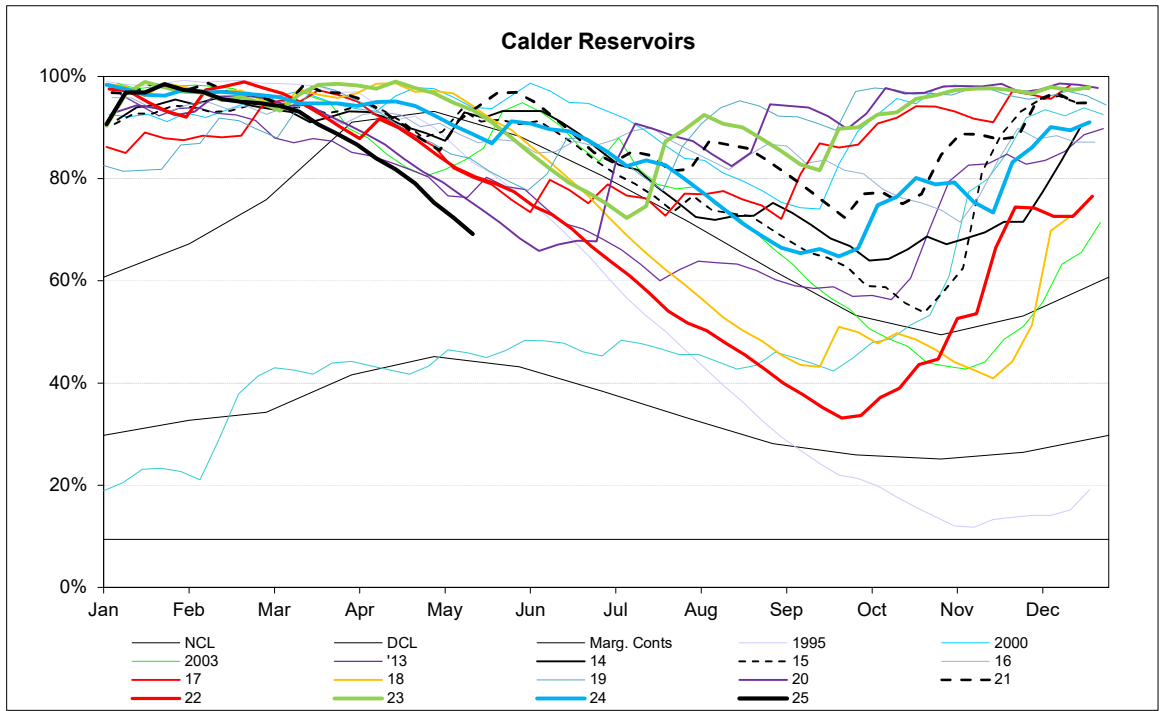


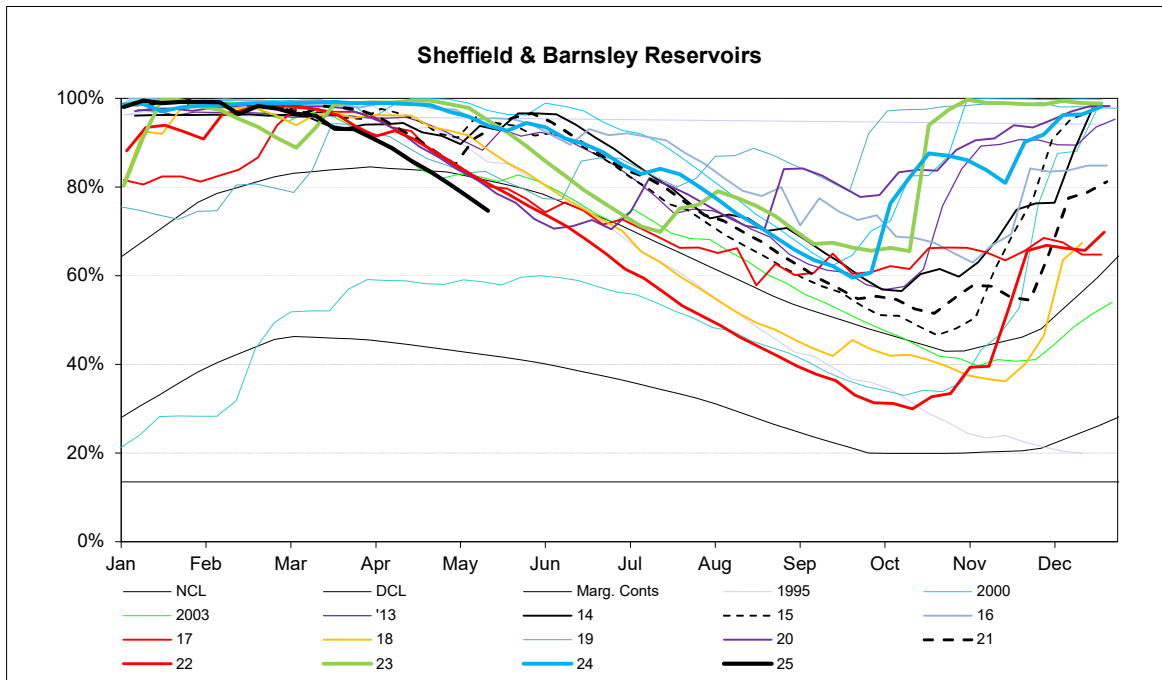




RESERVOIR STOCKS	28/04/2025		% Change	Planned Reservoir Safety Work	Required Drawdown & Duration	
Reservoir Group	% Stocks @	% Change	last week	Reason for Drawdown		
Calderdale (excl Withens Clough)	73.1%	-4.9%	-1.6%			
Boothwood/Ryburn ( incl WC)	76.4%	-4.0%	-2.2%			
(Gorpley)	63.6%	-1.8%	-1.3%			
Huddersfield	74.9%	-3.0%	-3.8%			
Brownhill/Digley	78.3%	-2.9%	-3.3%			
Walshaw Dean Lower	64.8%	-4.7%	-4.7%	OSA Repairs	Apr 25 - May 25	86.0%
Widdop	54.4%	-8.6%	-8.7%	Increase Drawdown Capacity	May 25 - June 25	21.0%
Widdop	54.4%	-8.6%	-8.7%	Increase Drawdown Capacity	June 25 - Aug 25	10.0%
Brownhill	85.2%	-3.7%	-4.9%	Leakage Investigation	Apr 25 - Sept 25	51.0%
Longwood Comp IRE	N/A	N/A	N/A	Spillway Grouting	TBC	40.0%
Longwood ESR	N/A	N/A	N/A	Pipework Painting	TBC	76.0%
<b>Calder Area Total</b>	<b>75.2%</b>	<b>-3.8%</b>	<b>-2.8%</b>			
Nidd/Barden/Chelker	71.0%	-4.0%	-3.3%			
Grimwith	71.3%	-3.8%	-3.8%			
Worth Valley	75.2%	-2.2%	-2.6%			
March Ghyll	83.4%	-0.4%	-0.9%	Embankment Stability Works	Jan 23 - Dec 24	86.0%
Ponden	92.2%	-0.6%	-2.1%	Repair Ground Anchor	Aug 24 - Mar 25	87.6%
Chelker	88.4%	-5.8%	0.2%	Pointing	Nov 24 - May 25	34.0%
Chelker	88.4%	-5.8%	0.2%	Pointing	Nov 24 - May 25	78.0%
<b>North West Area Total</b>	<b>95.0%</b>	<b>-3.6%</b>	<b>-3.3%</b>			
Washburn/Eccup Resrs.	80.2%	-1.2%	-1.1%			
Thornton Steward	89.0%	-1.4%	-0.4%			
Leighton/Roundhill	79.4%	-3.5%	-3.7%			
Haverah Park	87.3%	-2.4%	10.9%			
Swinsty	49.6%	-2.7%	-0.1%	Outlet Channel Repairs	Dates tbc	93.0%
Thruscross	94.7%	-2.3%	-1.8%	Bridge Repairs	Dates tbc	TBC
Cod Beck	100.0%	0.0%	0.0%	Inspection of Overflow and Upstream Face	Aug 24 - Mar 25	83.0%
Randy Mere				Upstream Face Repairs	TBC	17.0%
<b>North Area Total</b>	<b>93.5%</b>	<b>-1.8%</b>	<b>-0.5%</b>			
Don Valley & Winscar	85.3%	-2.5%	-2.3%			
Rivelin Valley	91.5%	5.7%	7.0%			
Little Don	74.3%	-3.1%	-3.1%			
Ewden Valley	79.5%	-3.9%	-2.8%			
Loxley Valley	83.4%	-3.2%	-3.1%			
Redmires	63.1%	-3.6%	-4.5%			
Redmires Upper	48.0%	-6.8%	-7.2%	Damage to Overflow Channel	Nov 23 - Oct 25	98.0%
Redmires Middle	63.2%	2.3%	-3.3%	Damage to Overflow Channel	Nov 23 - Oct 25	89.0%
Redmires Middle	79.5%	-3.9%	-2.8%	Issues with Sheet Piles	Feb 25 - Oct 25	95.0%
Broomhead	87.8%	-5.9%	-2.5%	Install Overflow Debris Barrier	June 24 - Feb 25	95.0%
Strines	0.0%	0.0%	0.0%	Overflow Investigation	Apr 25 -Sept 25	58.0%
<b>South Area Total</b>	<b>94.8%</b>	<b>-0.3%</b>	<b>-1.8%</b>			
Tophill Low	89.9%	6.1%	-1.1%			
Hull Aquifer	51.6%	-2.4%	-1.3%			
<b>East Area Total</b>	<b>54.7%</b>	<b>-1.8%</b>	<b>-1.2%</b>			
<b>Regional Total (DCP)</b> <b>(inc East Area)</b>	<b>73.9%</b>	<b>-2.9%</b>	<b>-2.5%</b>			
<b>YORKSHIRE TOTAL (Supply)</b> <b>(not inc East Area)</b>	<b>76.4%</b>	<b>-3.1%</b>	<b>-2.7%</b>			





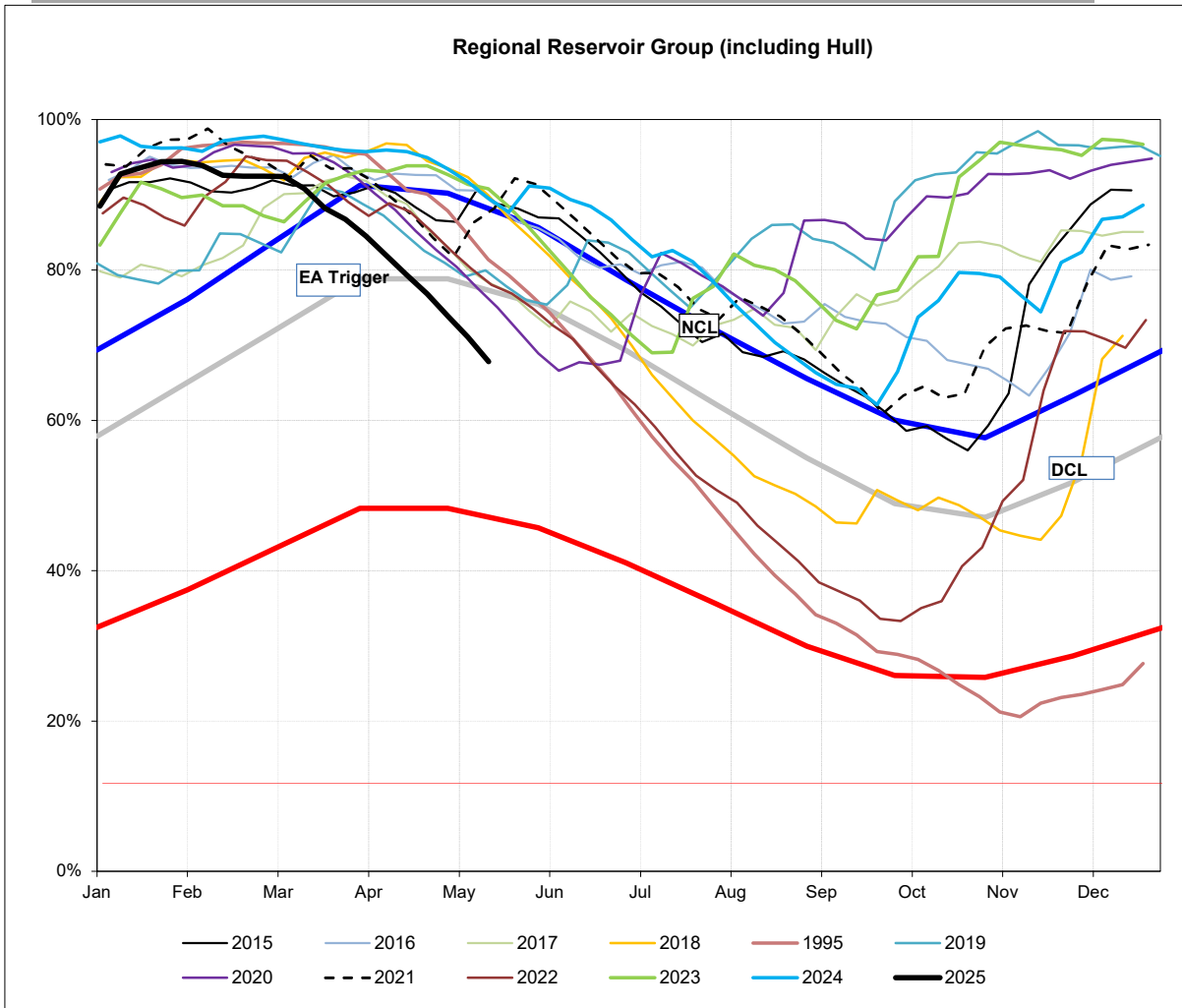


## EA STOCKS REPORT

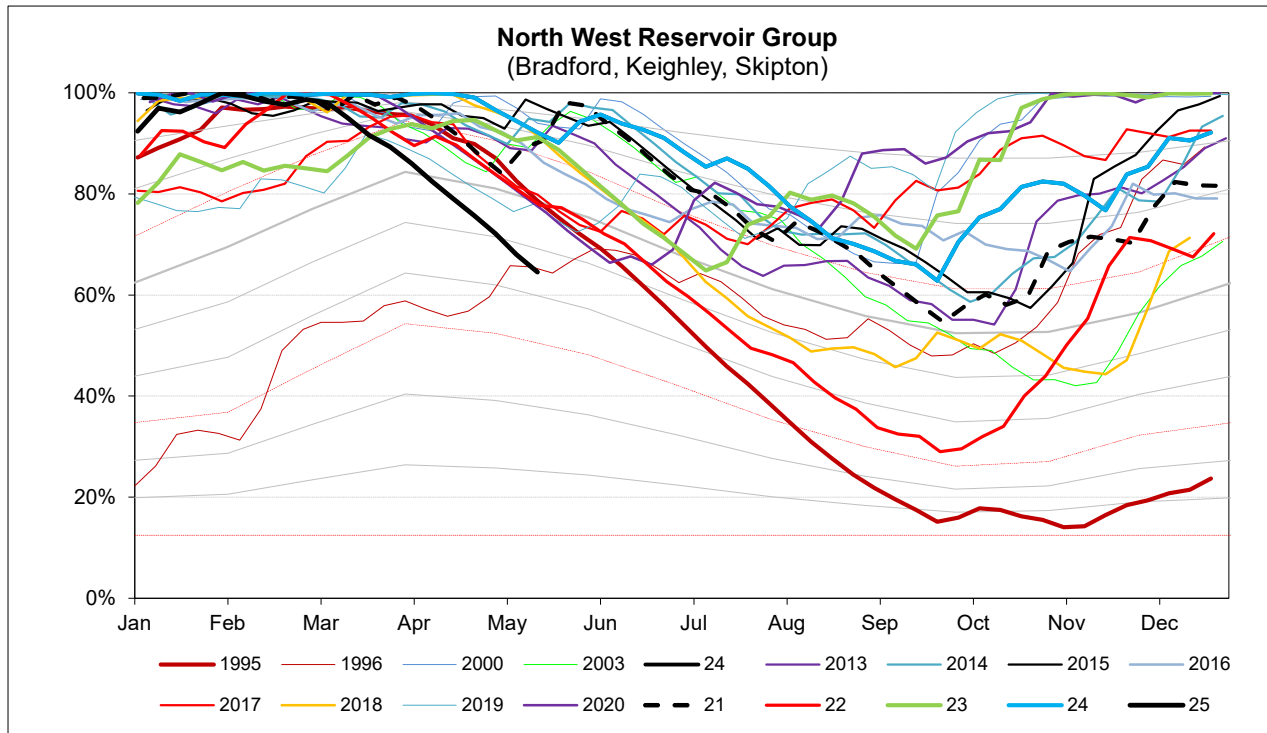
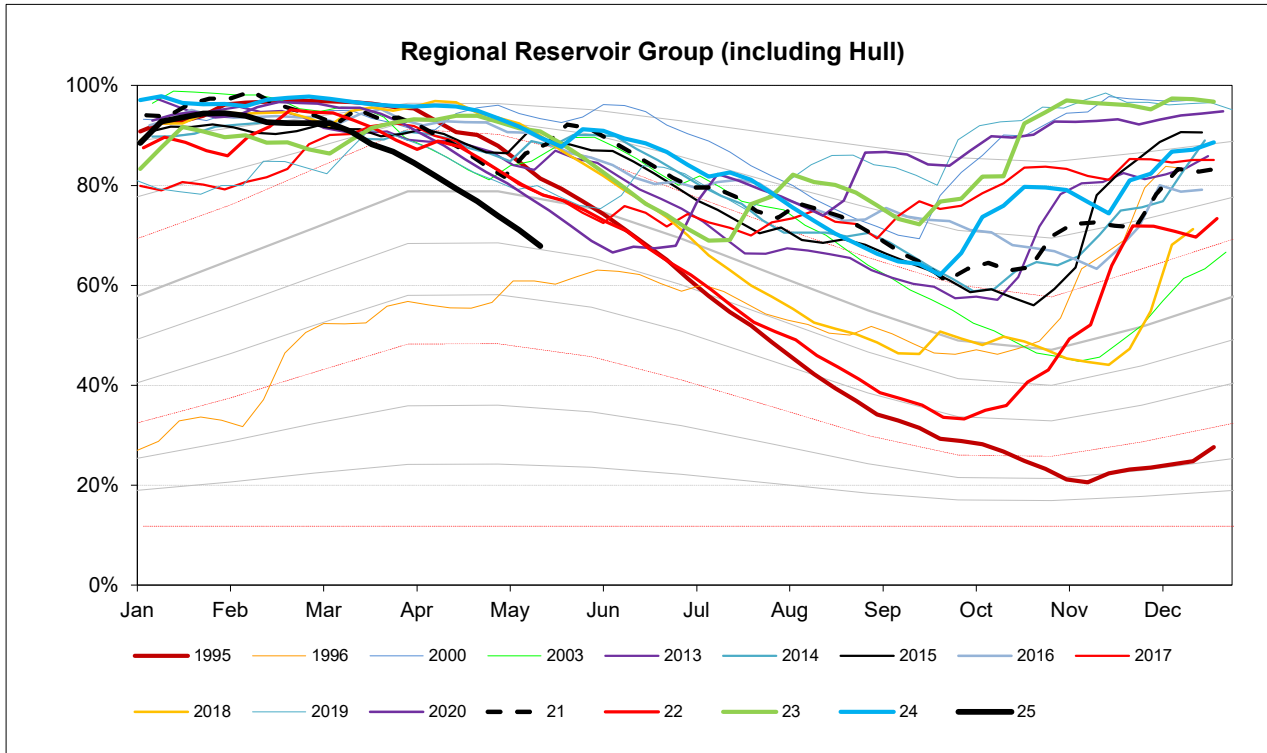
28 April 2025

EA Stocks Report			28/04/2025				
	MI	%	% change		MI	%	% change
<b>South West Area Supply Reservoirs</b>				<b>South Area Supply Reservoirs</b>			
Calderdale Group	8136	73.1%	-4.9%	Don Valley	1710	82.2%	-1.6%
Huddersfield Group	10569	74.8%	-3.1%	Little Don	5474	74.3%	-3.1%
Brownhill/Digley excl Holm	4375	77.9%	-2.9%	Ewden Valley	3927	79.5%	-3.9%
Boothwood/Ryburn	9107	77.8%	-4.1%	Loxley Valley	5735	83.4%	-3.2%
				Rivelin	746	91.5%	5.7%
<b>South West Reservoir Gro</b>	33142	75.2%	-3.8%	Redmires	1753	63.1%	-3.6%
<b>Bradford Area Supply Reservoirs</b>				<b>South Reservoir Group</b>			
Gouthwaite	3551	61.1%	-2.8%	Winscar Group	8069	85.9%	-2.7%
Grimwith	15508	71.3%	-3.8%	Compensation Reservoirs			
Nidd/Barden/Chelker	13621	71.0%	-4.0%	Scout Dike	536	77.2%	-6.0%
Rombalds/Thornton Group	1733	77.7%	-1.2%	Underbank	2705	94.3%	-2.3%
<b>Skipton Area Supply Reservoirs</b>				Morehall	1704	78.4%	-2.9%
Embsay	695	96.2%	0.1%	Damflask	4501	88.2%	-2.1%
Worth Valley Group	2490	75.2%	-2.2%				
<b>North West Reservoir Gro</b>	34048	72.1%	-3.6%	<b>North Area Supply Reservoirs</b>			
Compensation inc Silsden	1765	75.0%	-3.4%	Washburn	18742	80.2%	-1.2%
Gouthwaite	3551	61.1%	-2.8%	Eccup	5987	85.4%	-0.1%
March Ghyll & Elslack Reservoirs excluded				Leighton/Roundhill	5874	79.4%	-3.5%
for consistency with stocks predictions in WRAPSIM				Haverah Park	880	87.3%	-2.4%
				Lumley Moor	304	79.6%	-3.2%
				Thornton Steward	844	89.0%	-1.4%
<b>East Area Supply Reservoirs</b>							
Tophill Low	1513	89.9%	6.1%	North Reservoir Group	26644	80.1%	-1.8%
Hull Aquifer	9808	51.6%	-2.4%	Lindley Wood Compensat	1747	59.8%	-4.9%
<b>East Reservoir Group</b>	11320	54.7%	-1.8%	Regional Reservoir Group	132562	73.9%	-2.9%

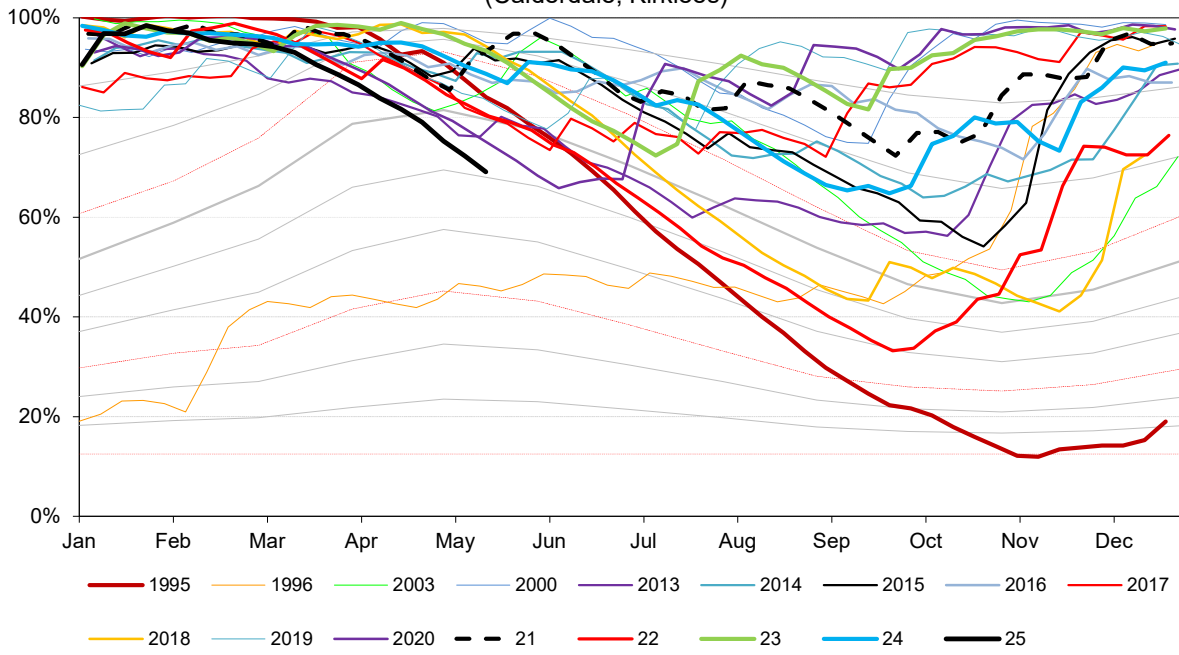
(sum of South West, North West, East, South, North &amp; Winscar Res)



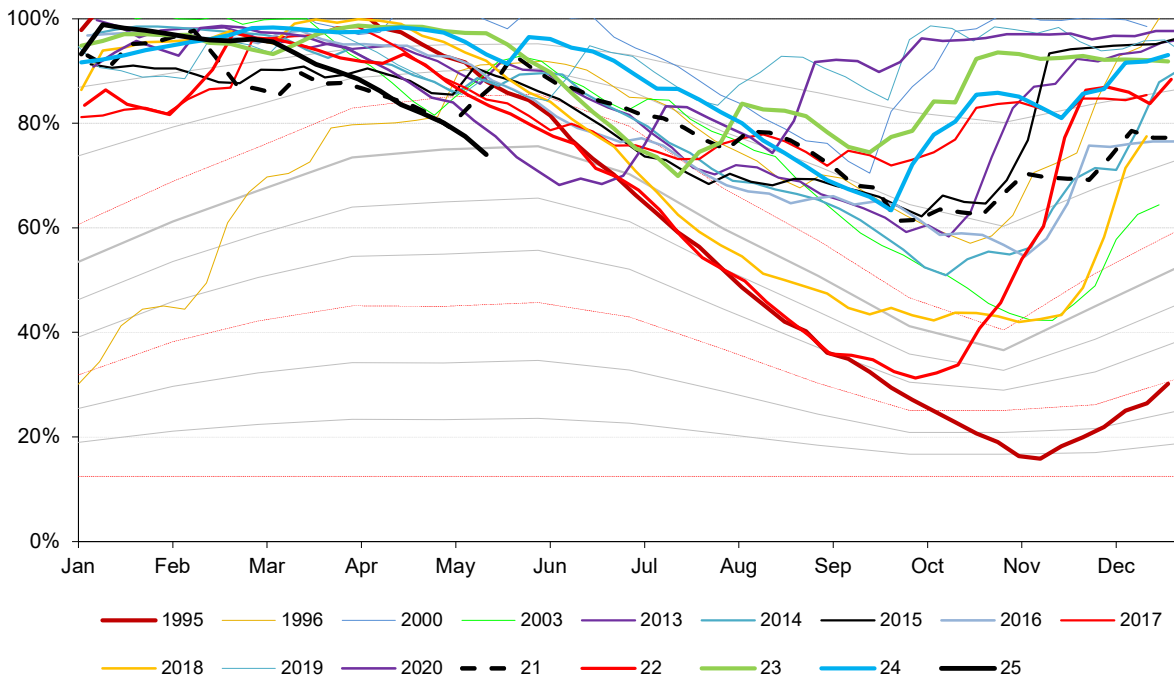
Triggers	
EA early warning (CL4)	Water resources to advise EA on production
Hosepipe Restrictions	When projected falling stocks fall below DCL
Drought Orders	When stocks are below DCL.



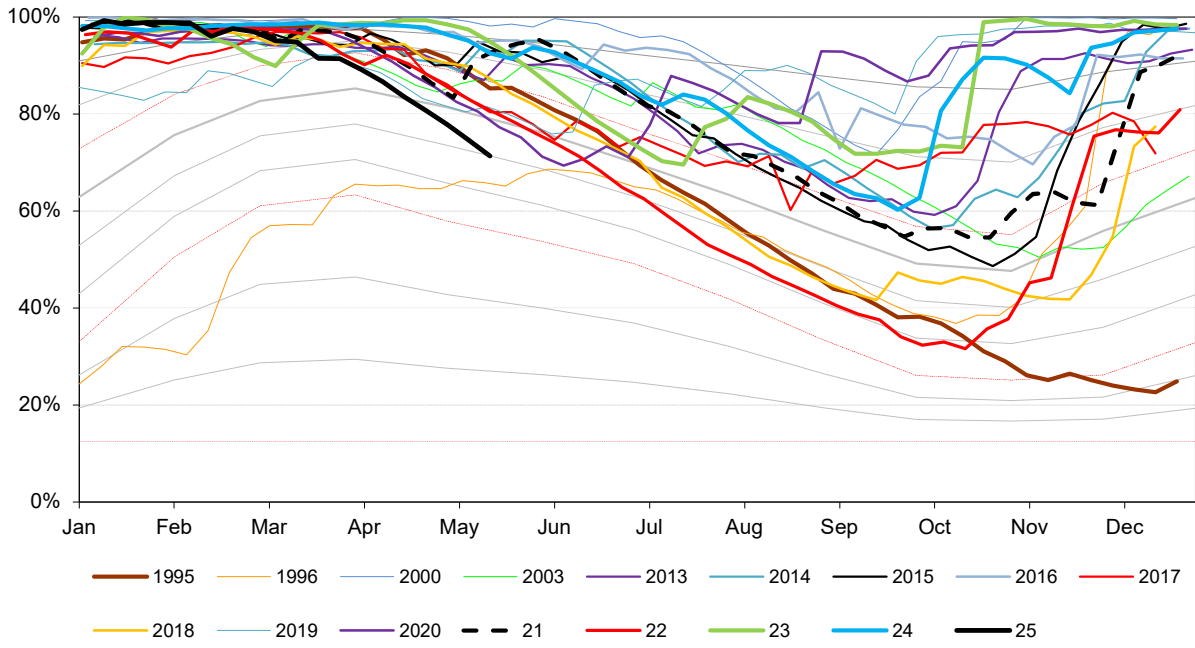
**South West Reservoir Group**  
(Calderdale, Kirklees)



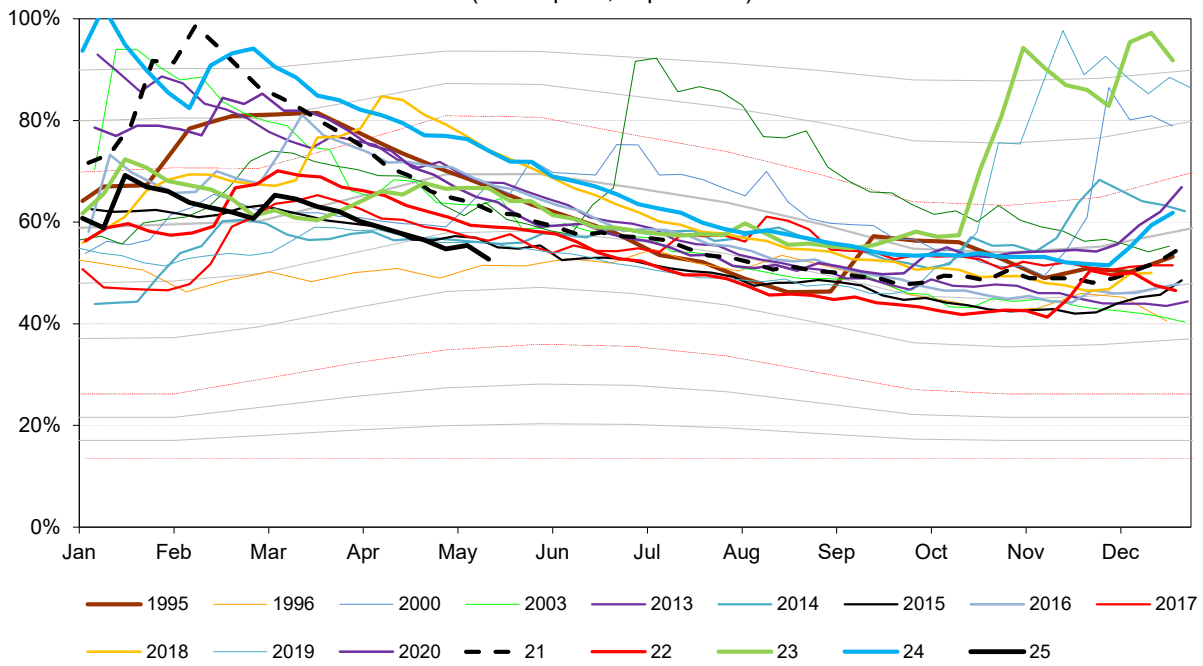
**North Reservoir Group**  
(Leeds, Harrogate)

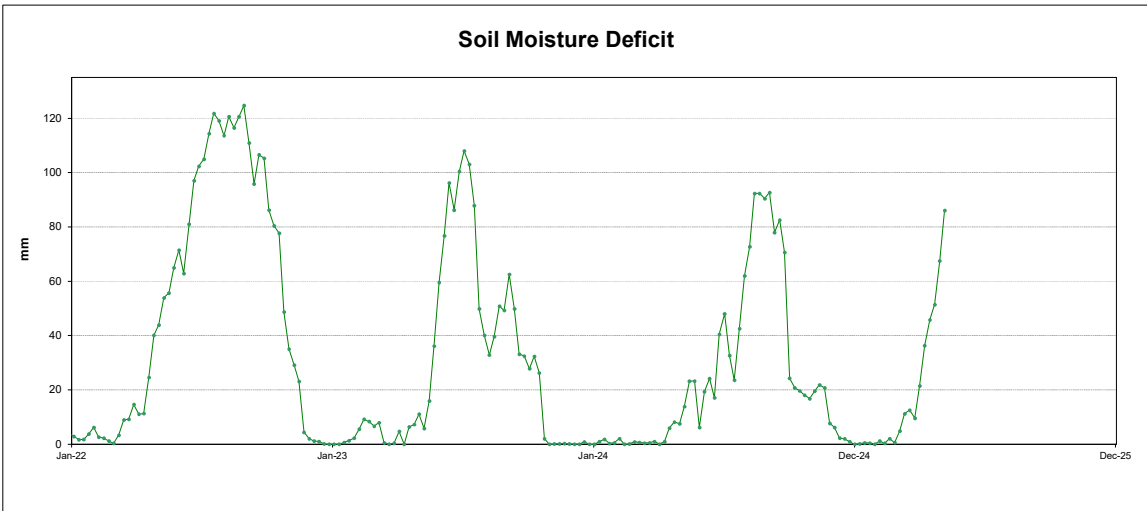
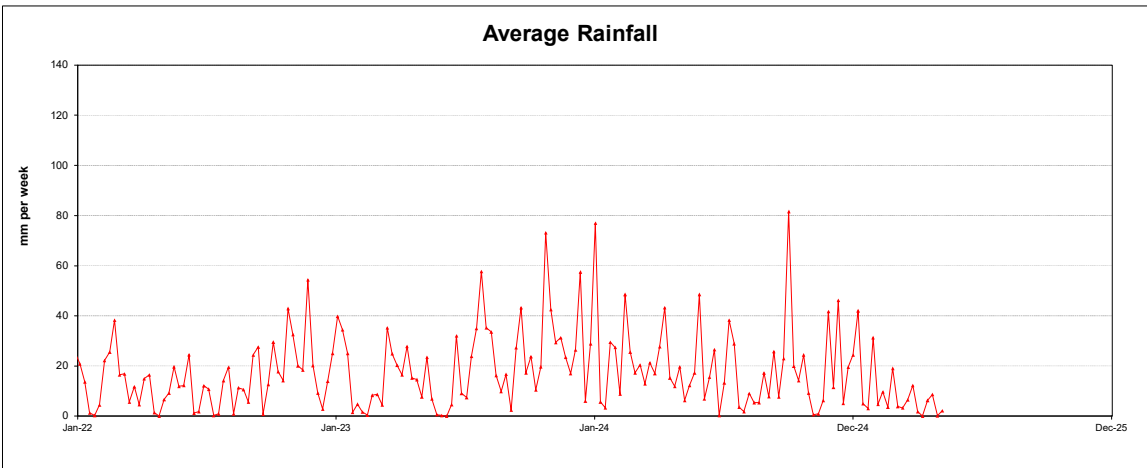
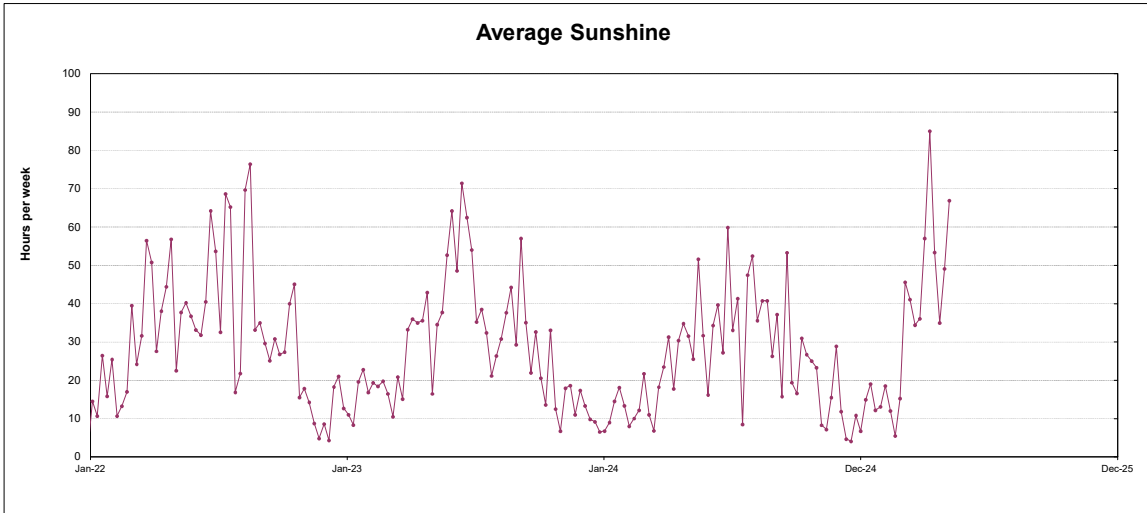


**South Reservoir Group**  
(Sheffield, Barnsley)



**East Reservoir Group**  
(Hull Aquifer, Tophill Low)





This page will normally be updated monthly (approx mid month).

This data may be subject to change following routine validation checks.

Where showing a negative value, this is normal at certain sources, due to the imports of water into that source being greater than the volumes abstracted.

## Units in MI

Serial No	Source	Reporting Year	March	Year to date MI	Run date	
					01-Apr-25	
					Annual Limit	% of Annual Limit
02/27/023/332	Ainderby Steeple Boreholes	C	123.3	374	1760	21.2%
03/28/083/010	Armthorpe Boreholes	C	237.9	695	3319	20.9%
03/28/083/012	Austerfield Boreholes	C	215.3	647	11615	5.6%
02/27/022/020	Aysgarth & Newbiggin Springs	C	17.7	46	341	13.5%
02/27/012/035	Baitings, Ryburn & Blackhouse reservoirs	C	441.5	1263	20457	6.2%
02/27/023/032	Bellerby Borehole and springs near Bellerby	F	72.0	560	1250	44.8%
02/27/022/209	Birk Gill & River Burn	C	238.3	1502	6400	23.5%
02/27/012/254	Boothwood Reservoir & associated catchwaters	C	358.4	837	20457	4.1%
02/27/10/112	Boshaw Whams Reservoir	C	0.0	0	55	0.0%
03/28/083/105	Boston Park Boreholes	C	183.3	549	3318	16.6%
02/27/024/305	Brayton Barff Boreholes	C	0.0	0	2250	0.0%
02/26/030/002	Bridlington	C	172.8	511	2500	20.4%
02/27/005/031	Broomhead Reservoir	F	1062.8	12261	12410	98.8%
02/26/030/004	Burton Agnes	C	75.8	231	1000	23.1%
02/27/018/080	Carlton Hanger Lane Boreholes	C	307.5	944	3500	27.0%
02/27/018/079	Carlton Mill Lane Boreholes	C	160.7	484	3800	12.7%
02/27/019/009	Carr Bottom Reservoir, Burley Woodhead	C	0.0	18	409	4.4%
02/27/023/340	Catterick Boreholes	F	189.9	2358	3650	64.6%
02/27/027/136	Cayton Carr Lane Boreholes	C	-4.4	33	3928	0.8%
02/27/027/163	Cayton Station Road Borehole	C	174.2	476	2646	18.0%
02/27/019/137	Chelker Reservoir	C	67.9	700	5000	14.0%
02/27/023/031	Coalsgarth Springs	C	15.0	27	750	3.6%
02/27/011/064	Colne Valley Catchwaters	F	199.9	2150	5840	36.8%
02/26/032/126	Cottingham Well	C	1043.6	3079	18184	16.9%
02/27/018/081	Cowick Boreholes	C	357.6	1080	5250	20.6%
02/27/023/046	Cranehow & Downholme Springs	C	0.0	0	318	0.0%
02/27/023/030	Crumma, Newsham & Gandale Springs	C	61.1	184	1364	13.5%
02/27/005/030	Dale Dyke & Agden Reservoirs	F	1065.5	10826	21412	50.6%
02/27/012/261	Dean Head & Scammonden	F	98.4	1059	3650	29.0%
02/27/19/121	Dib Spring, Hawkswick	C	0.0	0	27	0.0%
02/26/032/126	Dunswell Well	C	476.3	1414	16593	8.5%
NE/27/025/021	East Ness Boreholes	F	251.1	3314	5680	58.3%
02/26/031/087	Elmswell Wold Borehole	C	0.0	1	1273	0.0%
02/27/015/045	Embsay Reservoir	C	82.8	330	1846	17.9%
02/27/016/196	Esholt Sewage Treatment Works	C	0.0	0	88	0.0%
02/26/032/124	Etton Boreholes	C	89.5	336	5100	6.6%
03/28/083/012	Finningley Boreholes	C	300.1	896	6780	13.2%
02/27/022/328	Fossdale (High Shaw) Springs	C	12.0	30	227	13.2%
02/27/018/120	Goosehouse Boreholes	C	169.2	486	3500	13.9%
02/27/012/043	Gorpley Reservoir	C	0.0	0	1823	0.0%
02/27/016/022	Graincliffe Reservoir	F	30.3	1499	2728	55.0%
02/27/012/037	Green Withens Ringstone Res & catchwater	C	390.4	1168	20457	5.7%
02/27/019/051	Greenhow Tunnel (Nidd Aqueduct) Dale Head Intake	C	0.0	0	214	0.0%
02/27/019/052	Greenhow Tunnel (Nidd Aqueduct) No.2 Access Shaft	C	0.0	0	6819	0.0%
NE/27/019/005	Grimwith Reservoir to Nidd Aqueduct	F	635.4	3141	3650	86.0%
02/26/030/003	Haisthorpe Boreholes	C	213.5	742	5000	14.8%
03/28/083/012	Hatfield Boreholes	C	121.0	353	3319	10.6%
03/28/083/100	Hatfield Woodhouse Boreholes	C	0.0	0	3320	0.0%
02/27/029/010	Hazel Head Springs	C	49.6	150	1162	12.9%
02/27/012/041	Hebden, Luddenden & Hebble Valley Resrs	F	1061.9	12289	15695	78.3%
02/27/018/077	Heck Boreholes	C	0.1	0	2489	0.0%
03/28/083/012	Highfield Lane Boreholes	C	444.4	1288	11615	11.1%
02/27/023/685	Hollin Hill Borehole	F	1.2	22	45	49.6%
02/27/010/063	Holmestyes & Digley Reservoirs	F	261.9	2984	5840	51.1%
02/27/22/024	Horsehouse Spring, leyburn	C	0.0	0	33	0.0%
02/27/027/002	Howe Hill Well	F	78.2	947	1014	93.4%
02/26/031/006	Hutton Cranswick	C	43.8	134	796	16.8%
02/27/005/012	Ingbirchworth Reservoir & Annat Royd Intake	C	262.1	790	3637	21.7%
02/27/005/202	Ingbirchworth South Borehole	F	4.2	51	132	38.5%

02/27/027/058	Irton	C	483.0	1439	8215	17.5%
02/27/21/015	John O'Gaunts and Beaverdyke Reservoirs	C	0.0	0	1909	0.0%
02/27/014/010	Keighley Moor Reservoir	F	41.1	411	6951	5.9%
02/27/025/128	Keld Head Boreholes	C	172.6	528	3319	15.9%
02/26/032/126	Keldgate Boreholes	C	165.4	741	5819	12.7%
02/26/031/002	Kilham	C	0.3	12	1818	0.7%
02/27/005/032	Langsett Reservoir	F	1110.0	12552	17155	73.2%
02/27/022/210	Leighton Reservoir & Spruce Gill stream intake	C	706.1	1476	13184	11.2%
03/28/083/107	Littleworth Borehole	C	0.0	0	1659	0.0%
02/27/028/270	Loftsome Bridge ASR Borehole No.1	C	0.0	0	150000	0.0%
02/27/014/009	Lower Laithe Reservoir	F	297.8	2712	6951	39.0%
02/27/005/011	Midhope Reservoir & Knoll Brook Intake	F	332.2	3673	17155	21.4%
02/26/034/006	North Newbald	C	0.0	0	548	0.0%
03/28/083/012	Nutwell Boreholes	C	191.8	640	4983	12.8%
02/27/019/006	Panorama, Hilltop & Old Reservoirs & Springs	C	15.8	103	1000	10.3%
02/27/018/078	Pallington Boreholes	C	209.4	577	5000	11.5%
02/27/014/058	Ponden Reservoir	F	4.3	944	6951	13.6%
02/27/016/023	Reva Reservoir, Hawkesworth	C	68.0	352	1364	25.8%
02/27/005/029	Rivelin and Redmires Reservoirs	F	594.2	4821	8030	60.0%
02/27/028/017	River Derwent at Elvington	F	5227.6	55178	75000	73.6%
02/27/028/083	River Derwent at Loftsome Bridge	F	1368.5	23099	30400	76.0%
02/27/029/012	River Esk	C	265.0	804	7823	10.3%
02/26/031/047	River Hull & West Beck	C	1172.9	3290	25000	13.2%
02/26/032/194	River Hull for Sewer Cleaning	C	0.0	0	91	0.0%
02/27/024/078	River Ouse at Acomb	F	804.0	10094	35000	28.8%
02/27/024/158	River Ouse at Moor Monkton	F	2178.7	29347	73000	40.2%
02/27/022/214	River Ure at Kilgram Bridge	F	240.1	3565	15000	23.8%
02/27/020/196	River Wharfe at Arthington	F	8.7	367	19009	1.9%
02/27/019/129	River Wharfe at Lobwood	F	1402.0	20832	27392	76.1%
03/28/083/012	Rossington Bridge Boreholes	C	0.0	0	5172	0.0%
02/27/022/027	Roundhill and Lumley Moor Reservoirs	C	50.5	163	3500	4.7%
02/27/005/013	Royd Moor Reservoir & Intakes	C	151.9	489	2955	16.6%
02/27/021/016	Scargill Reservoir	C	56.1	267	1932	13.8%
02/27/021/092	Scarhouse & Angram Resvrs with tunnel & catchwater	C	3137.1	9488	38164	24.9%
02/27/15/149	Silsden Beck, Stilling-Basin at foot of Silsden Reservoir Emb	C	0.0	0	10	0.0%
02/26/032/126	Springhead Well	C	617.0	2033	13638	14.9%
02/27/022/021	Stalling Busk & Marsett Springs	C	0.0	0	33	0.0%
02/27/022/208	Stock Beck, Carlesmoor Beck & River Laver	C	312.0	1429	3500	40.8%
02/27/023/684	Stubbing Nook Borehole	F	0.0	13	135	9.6%
03/28/083/012	Thornham Boreholes	C	297.1	881	6213	14.2%
02/27/016/160	Thornton Moor & Stubden Reservoirs	C	317.4	954	6214	15.3%
02/27/012/038	Turvin Clough	C	0.5	7	4014	0.2%
02/27/019/054	Upper & Lower Barden Reservoirs	C	495.5	845	14223	5.9%
02/27/020/088	Washburn Valley Reservoirs	C	3113.6	8296	43800	18.9%
02/27/015/041	Watersheddles Reservoir	F	167.2	1669	6951	24.0%
02/27/016/021	Weecher Reservoir	C	27.4	71	909	7.8%
02/27/011/065	Wessenden Valley, Blackmoorfoot & Deerhill	F	809.0	9825	12410	79.2%
02/27/023/034	West Stonesdale (Garland Hill) Springs	C	0.0	0	282	0.0%
02/27/015/042	Whinney Gill & Jenny Gill Reservoirs	C	0.0	14	377	3.7%
02/27/005/026	Winscar, U & L Windleden, Harden & Snailsden	F	149.8	6675	10140	65.8%
02/27/012/036	Withens Clough Resr & Catchwater	C	227.6	649	3319	19.6%
02/27/010/011	Yateholme, Riding Wood, Ramsden & Brownhill	F	176.2	2923	6820	42.9%

Licences with Aggregated Annual Quantities	Reporting Year	March	Year to date MI	Annual Limit	% of Annual Limit
Baitings, Ryburn, Boothwood, Green Withens	C	1190	3268	20457	16%
Langsett, Midhope	F	1442	16226	17155	95%
Worth Valley	F	510	5736	6951	83%
River Derwent (Elvington, Loftsome)	F	6596	78277	94841	83%
Cayton, Irton	C	653	1948	10700	18%
Selby Boreholes	C	1204	3572	25283	14%
Doncaster Wellfield	C	1991	5948	30295	20%
Doncaster Sub Group	C	1570	4704	26049	18%
Austerfield & Highfield Lane	C	660	1934	9956	19%
Hull Groundwater Sources	C	2302	7268	32850	22%

**Third Party Agreements (Calendar Year)****Units in MI****Run date****01-Apr-25**

<b>Source</b>	<b>Reporting Year</b>	<b>March</b>	<b>Year to date MI</b>	<b>Annual Limit</b>	<b>% of Annual Limit</b>
CRT, Hudds Narrow Canal	C	47	70	1273	5%
Severn Trent Ladybower Reservoir	C	1551	4539	21550	21%

**Reading date:****31-Mar-25**

	<b>Reporting Year</b>	<b>Year to date MI</b>	<b>Annual Limit</b>	<b>% of Annual Limit</b>
Winscar To Langsett Transfer Usage	F	1483	2482	60%