

WATER SITUATION REPORT

1. Rainfall

The Yorkshire Region Has Received 40.3% of LTA for March

2. Reservoirs (surface water supply reservoirs not including Hull)

Over the Past Week Our Reservoir Stocks Have Decreased By -2.27% To 87.7%

3. Rivers

Some of Our Rivers are Below Critical Level

4. Demand

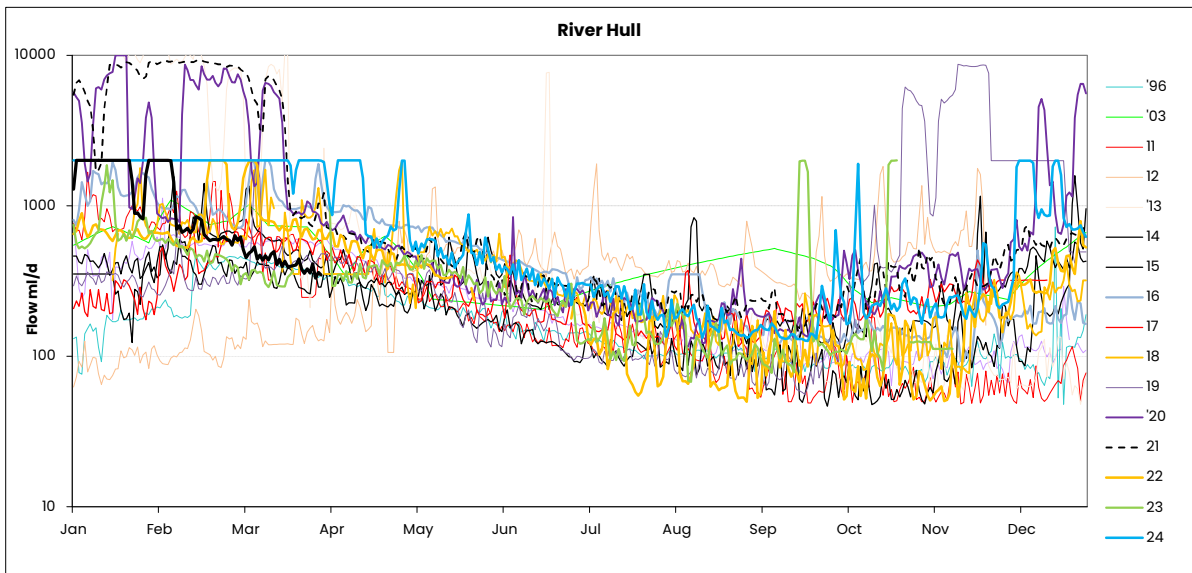
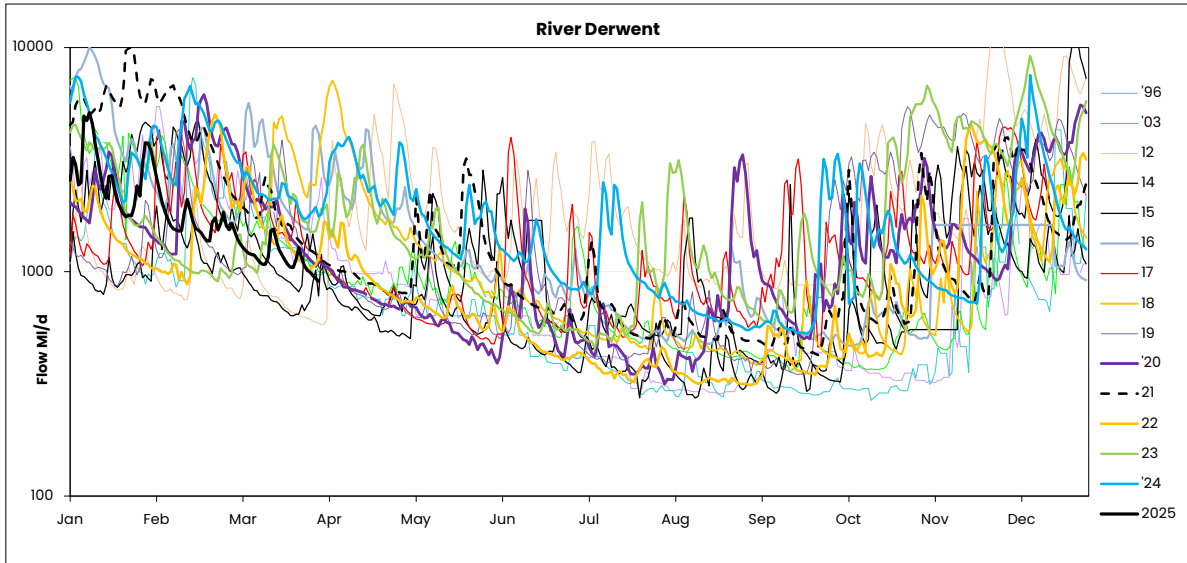
Regional Demand = 1347.5 MI/d (including York)

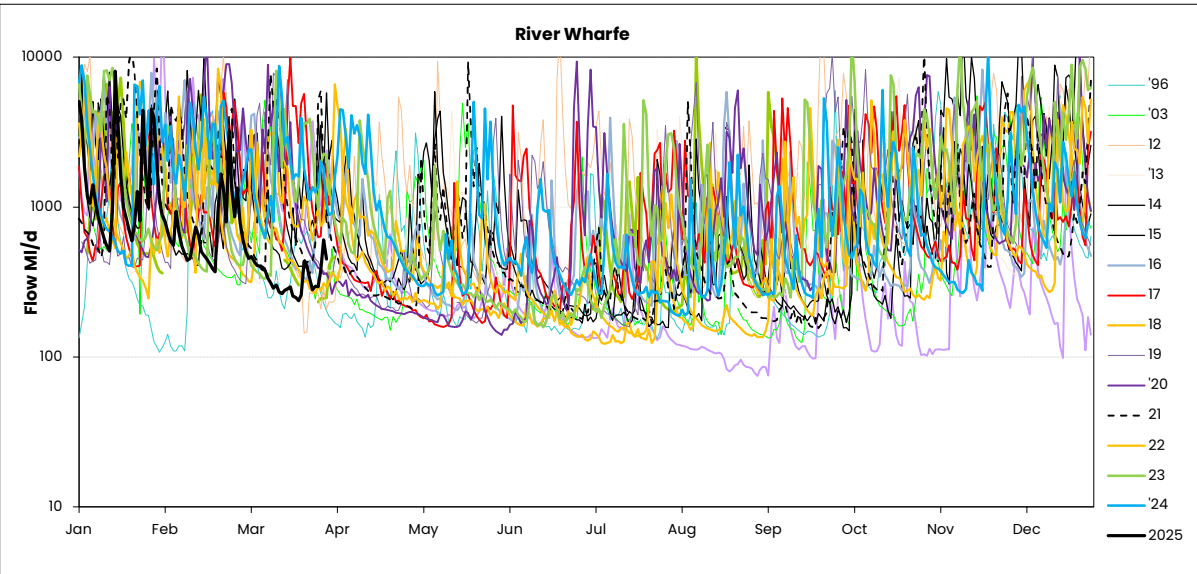
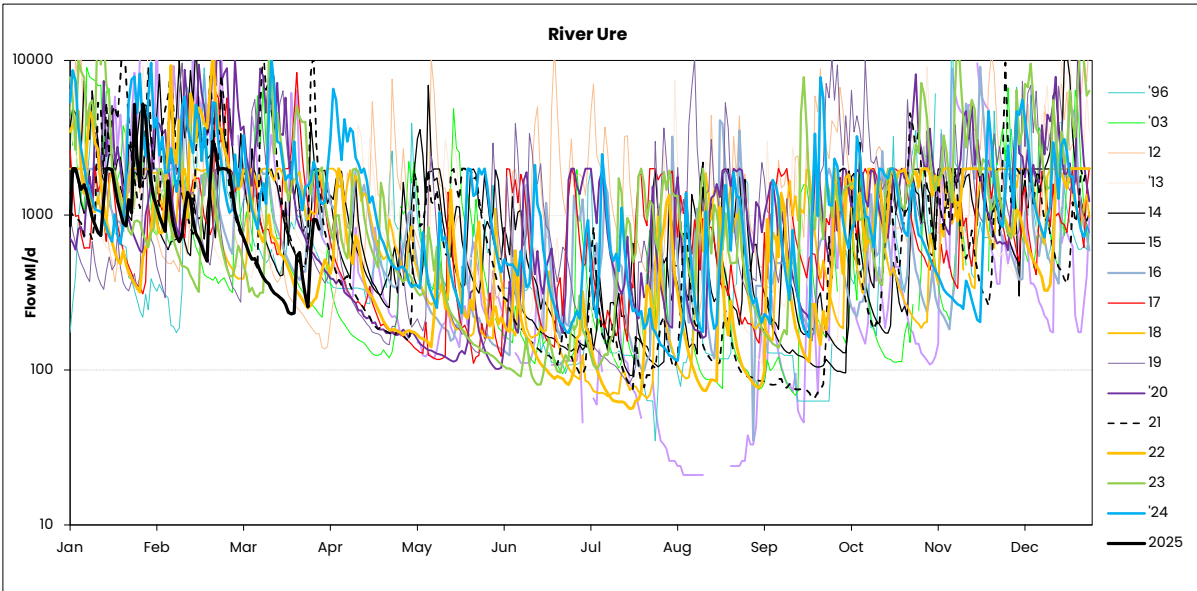
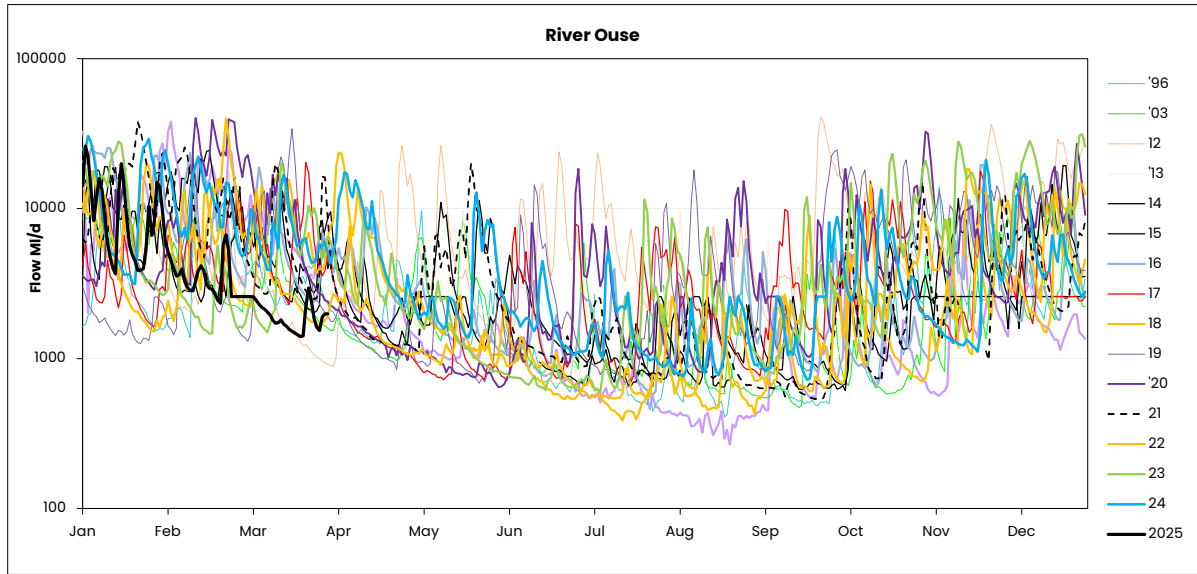
5. Comments

RIVER FLOWS

31 March 2025

	Mon 31-Mar	Mon 24-Mar	Mon 17-Mar	Mon 10-Mar	Critical flow bands
Derwent	907	1283	1253	1105	305
Hull (using gauged (residual flows) only from 20	347	377	395	435	45 / 159 / 227
Ouse	1984	2955	1570	1945	400 / 650 / 1000
Ure	810	573	294	434	50 / 163 / 300
Wharfe	① 450	① 403	① 284	① 336	252 / 389 / 488 / 580





Yorkshire Region (Met Office)				England/Wales	
Month	mm	LTA	LTA(%)	mm	LTA(%)
August	30	77	39%	54	68%
September	118	71	167%	136	183%
October	72	84	86%	96	97%
November	51	89	57%	84	82%
December	108	90	120%	97	93%
January	82	80	103%	100	108%
February	37	70	53%	57	78%

SOURCE OF DATA : Hydrological Summary of Gt Britain, Institute of Hydrology

Yorkshire Water Services Data			
Rainfall Station	Total March	LTA March	LTA % March
Tophill	NDA	50	0%
Cottingham	NDA	53	0%
Bridlington	NDA	53	0%
Roundhill	31.3	93	34%
Fewston	25.9	78	33%
Osmotherley	29.4	60	49%
Scar House	34.0	126	27%
Watersheddes	28.8	116	25%
Gt Walden Edge	47.7	109	44%
Walshaw Dean	34.8	119	29%
Blackmoorfoot	46.7	106	44%
Ramsden	92.2	132	70%
Redmires	43.4	92	47%
Langsett	39.2	95	41%
YORKSHIRE REGION	41.2	102.4	40%
EAST REGION	29.4	60.0	49%
PENNINE (WEST)	42.4	106.6	40%

NDA= No data available/lack of readings, impacts % LTA for the month
SOURCE OF DATA : YWS RAIN GAUGES- weekly, so monthly data may include previous month or miss start of month

MAJOR SOURCE OUTPUTS

31 March 2025

26/03/2025

	Operational Maxima & Design Yields (Ml/d)	WRAP Targets Week Beginning 26/03/2025	Daily Average Previous 5 Days Starting - 26/03/2025	WRAP Targets Week Starting - 19/03/2025	Daily Average Week Starting - 19/03/2025
WATER TREATMENT WORKS					
CENTRAL					
ECCUP NO 1 WTW	100	53.0	56.5	53	56
ECCUP NO 2 WTW	60	44.0	38.3	44	39
HEADINGLEY	95	63.0	78.1	63	68
HARLOW HILL	41.5	27.0	26.9	27	26
THORNTON STEWARD	22.5	19.7	21.9	20	22
EAST					
EAST NESS	17	8.0	8.5	8	8
IRTON	23.5	13.0	14.5	13	14
RUSWARP	12	7.0	7.1	7	7
TOPHILL LOW	68	40.0	31.5	40	33
KELDGATE	90	60.0	69.5	60	61
NORTH WEST					
CHELLOW	175	148.0	157.5	148	160
GRAINCLIFFE	60	38.0	40.0	38	40
SLADEN VALLEY	12	8.0	9.7	8	9
OLDFIELD	10.1	6.0	6.6	6	6
EMBSAY	25	17.0	19.8	17	19
SOUTH					
INGBIRCHWORTH	20	20.0	11.9	20	14
LANGSETT	56	36.0	46.2	36	48
(TOTAL)	75	56	58	56	62
EWDEN	40	35.0	35.5	35	35
LOXLEY	40	26.0	37.4	26	35
(TOTAL)	80	61	73	61	70
RIVELIN	75	64.0	66.3	64	68
SOUTH WEST					
ALBERT	55	51.0	43.4	51	45
FIXBY	30	21.0	16.5	21	19
KIRKHAMGATE	30	17.0	16.9	17	19
(TOTAL)	115	89	77	89	84
BLACKMOORFOOT	23	20.0	14.4	20	19
LONGWOOD	32	27.0	22.5	27	23
(TOTAL)	55	47	37	47	42
HOLMBRIDGE	29	19.0	22.4	19	19
GRID					
ELVINGTON	260	159	180.0	159	178
LOFTSOME BRIDGE	110	75	35.3	75	38

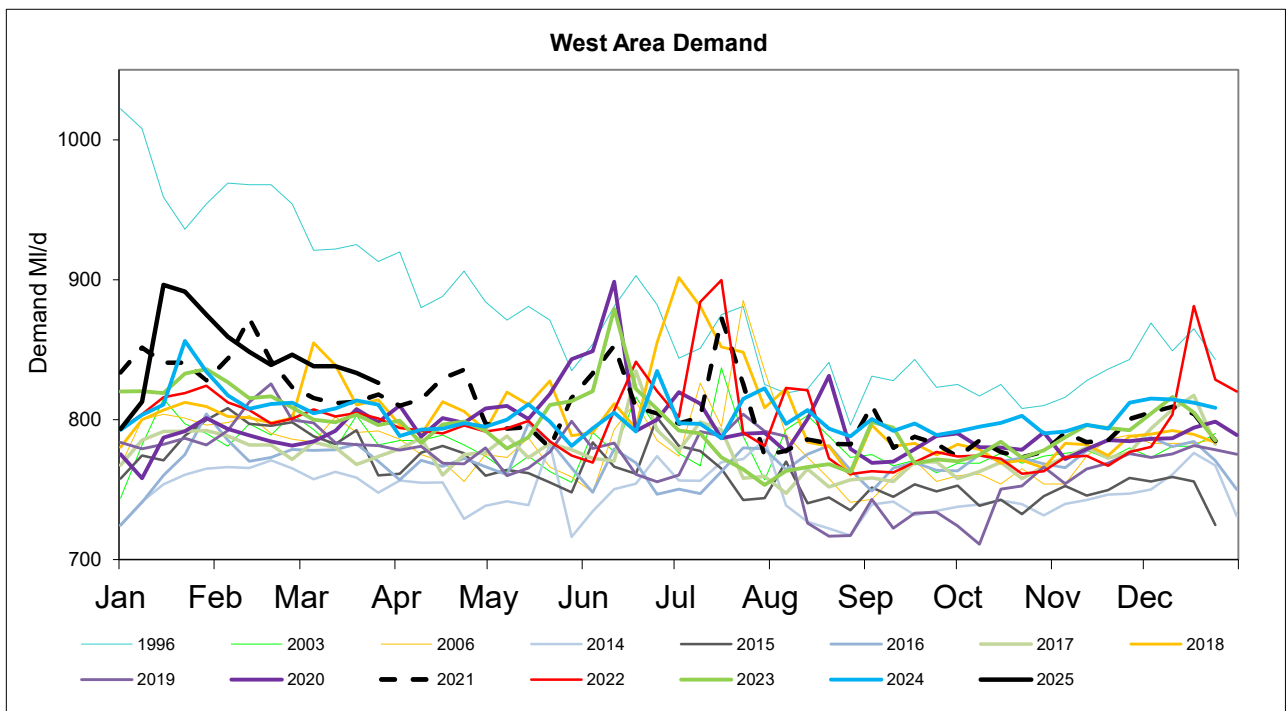
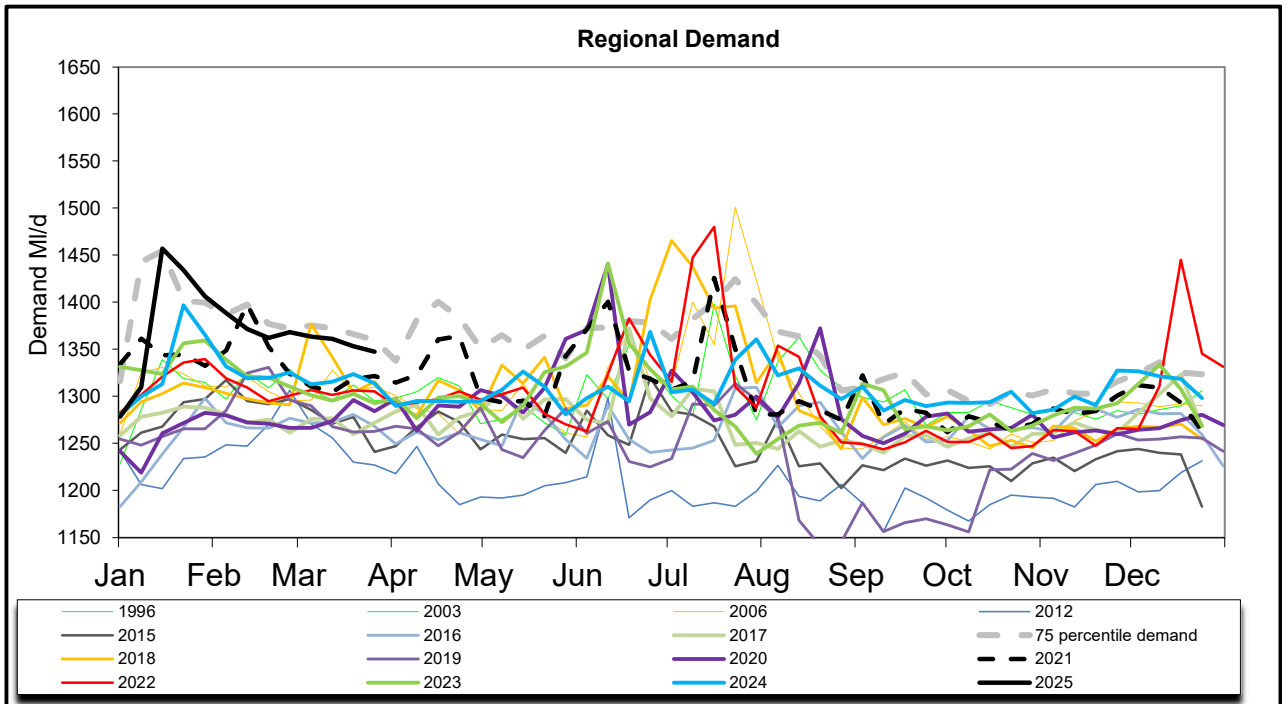
Daily Average Demand MI/d

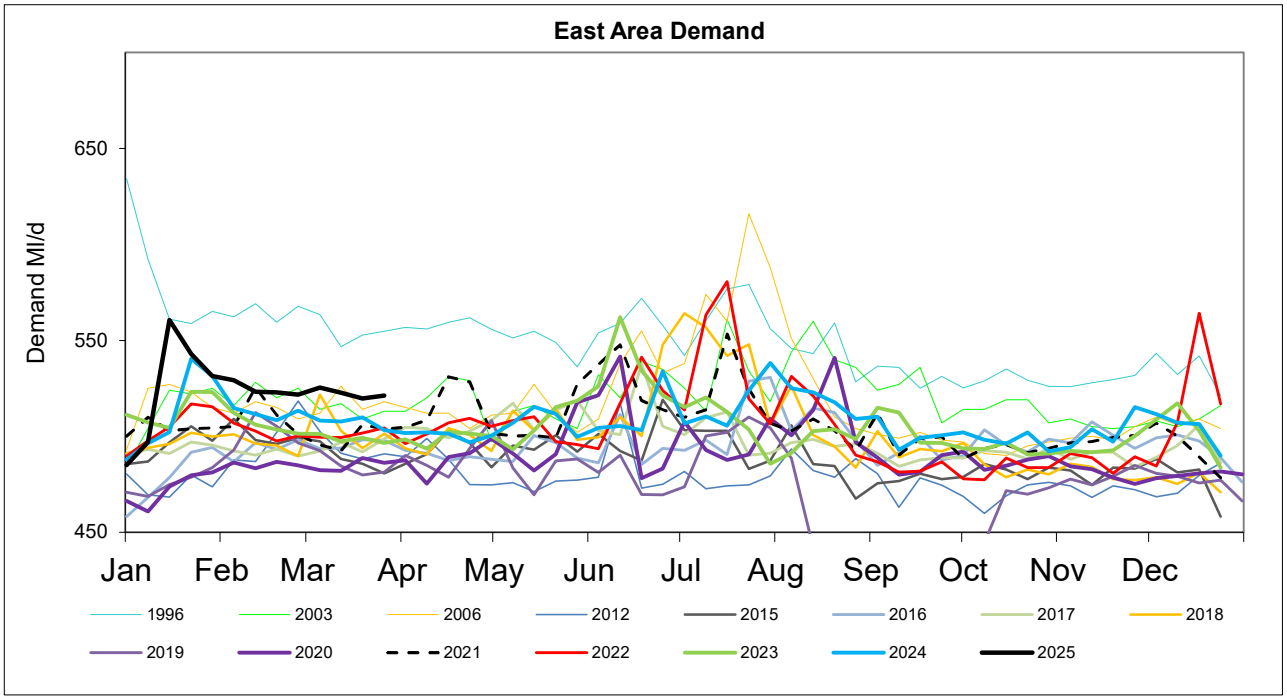
Week Ending Wednesday	L E E D S	W A K E + R F I E L D	M O R B Y	H A R O G A T E	H U L L	M A L T O N	S H E F F / B L Y	D O N C A S T E R	B R A D F O R D	C A L D E R	S K I P T O N	Y O R K A	R E G I O N
26/02/2025	177	81	41	79	160	53	289	84	149	161	41	53	1368
05/03/2025	178	79	42	79	164	52	285	83	149	160	40	52	1364
12/03/2025	176	79	42	79	163	54	286	83	149	159	40	50	1361
19/03/2025	176	78	42	80	160	53	286	82	147	158	40	51	1353
26/03/2025	174	76	43	80	163	54	281	81	147	157	41	50	1348

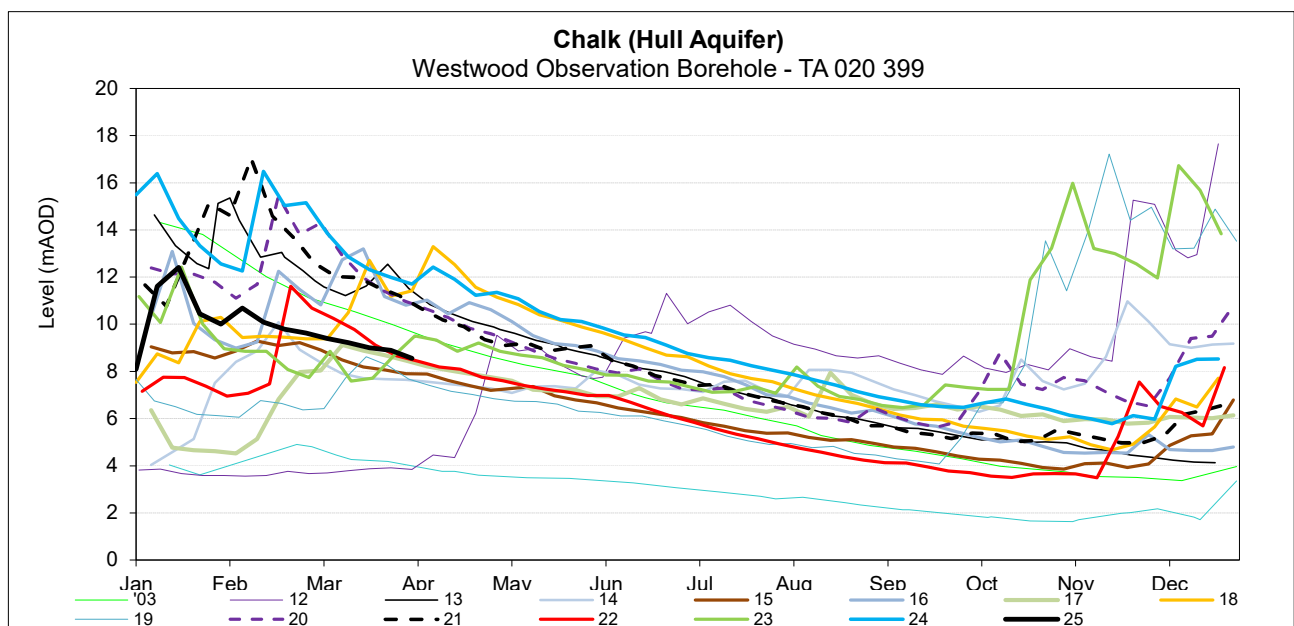
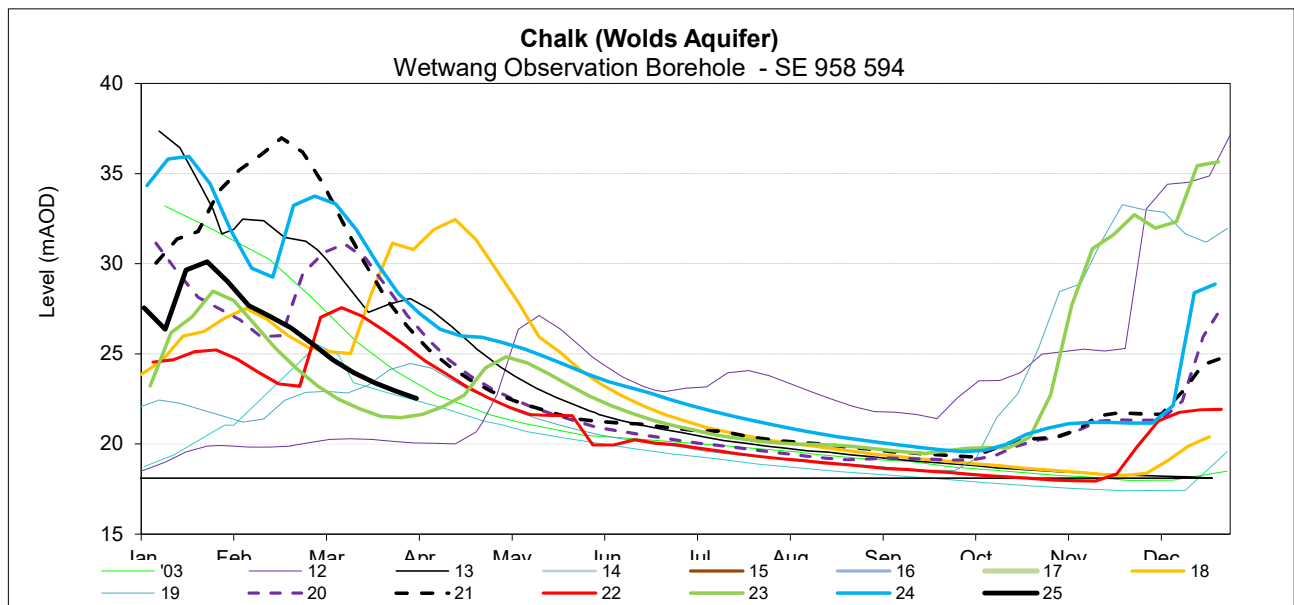
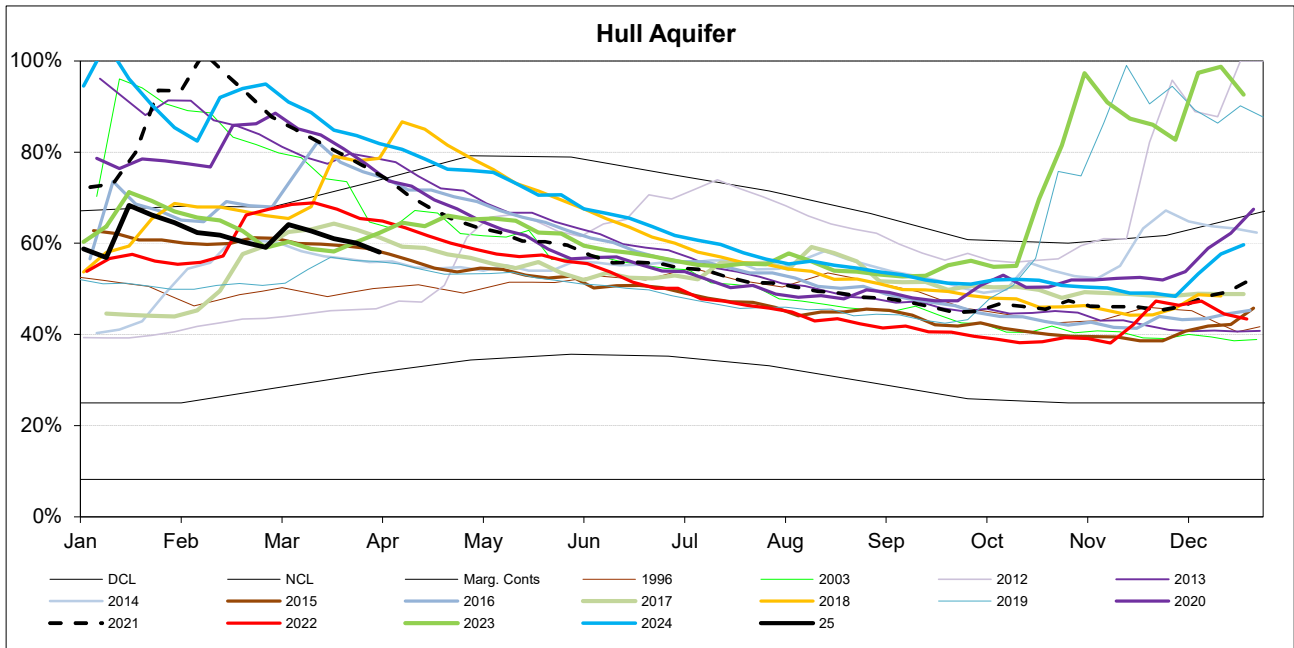
MONTHLY DEMANDS FROM WIS REPORT

Jan-25	176	84	43	75	160	55	295	78	159	153	40	52	1371
Feb-25	174	79	40	73	159	54	292	76	152	150	40	52	1341

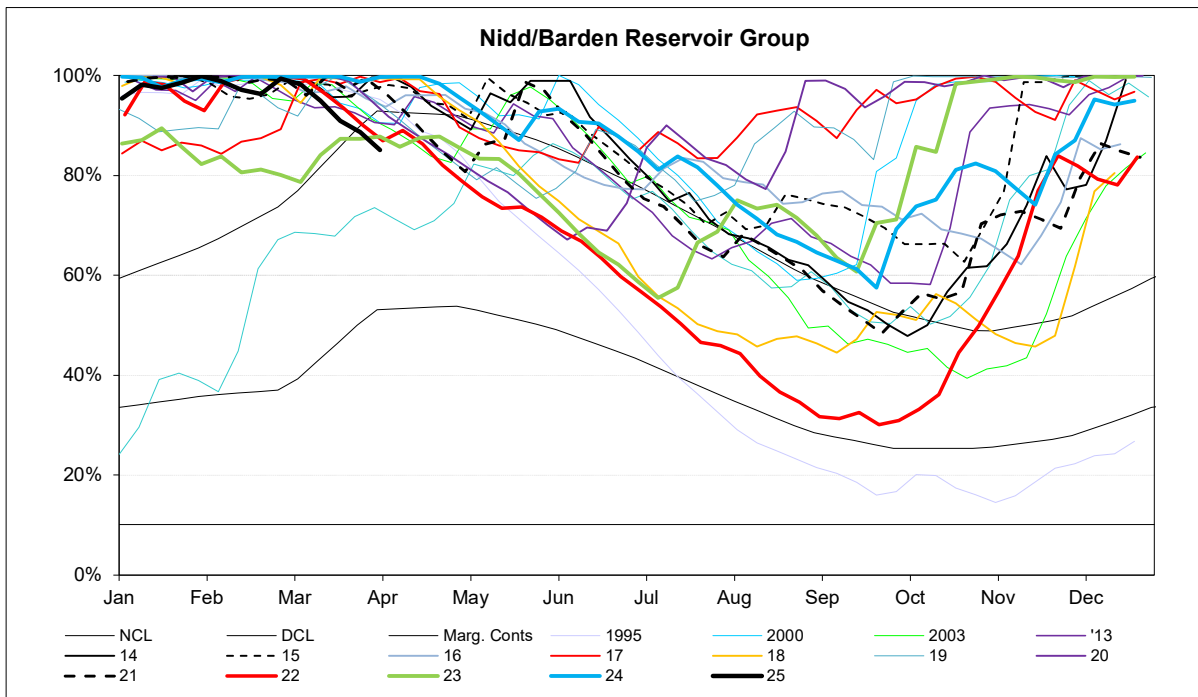
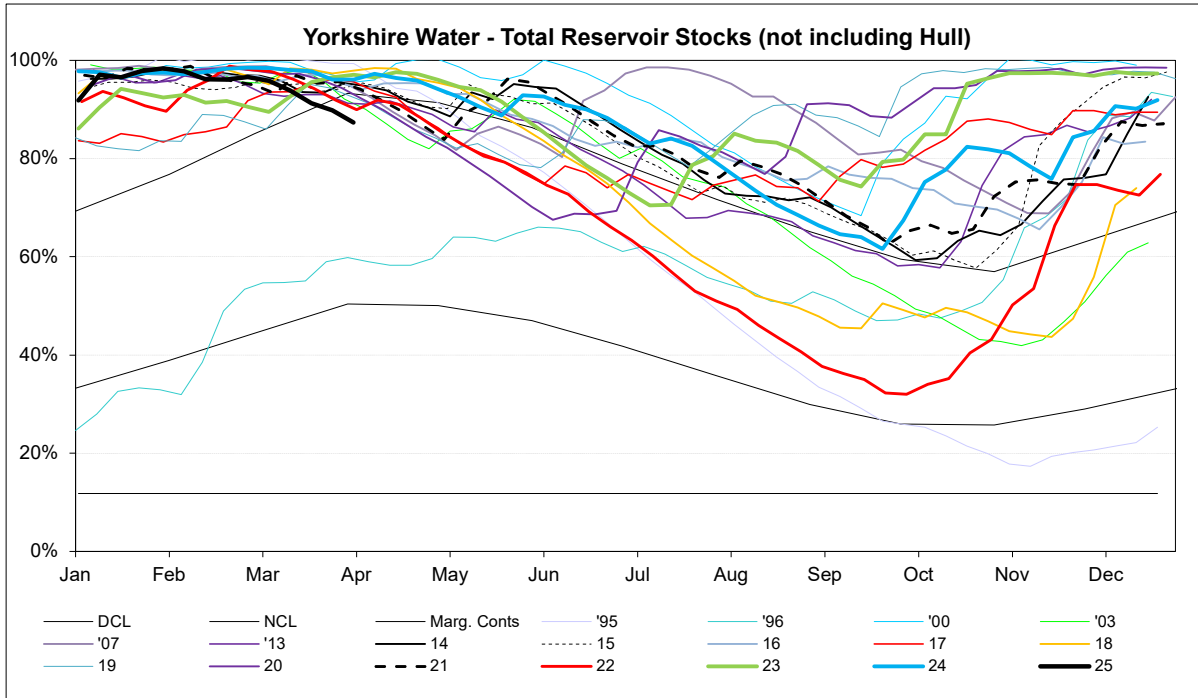
NB Current month demands include some estimates for minor sources and are not exactly comparable with previous months' figures.

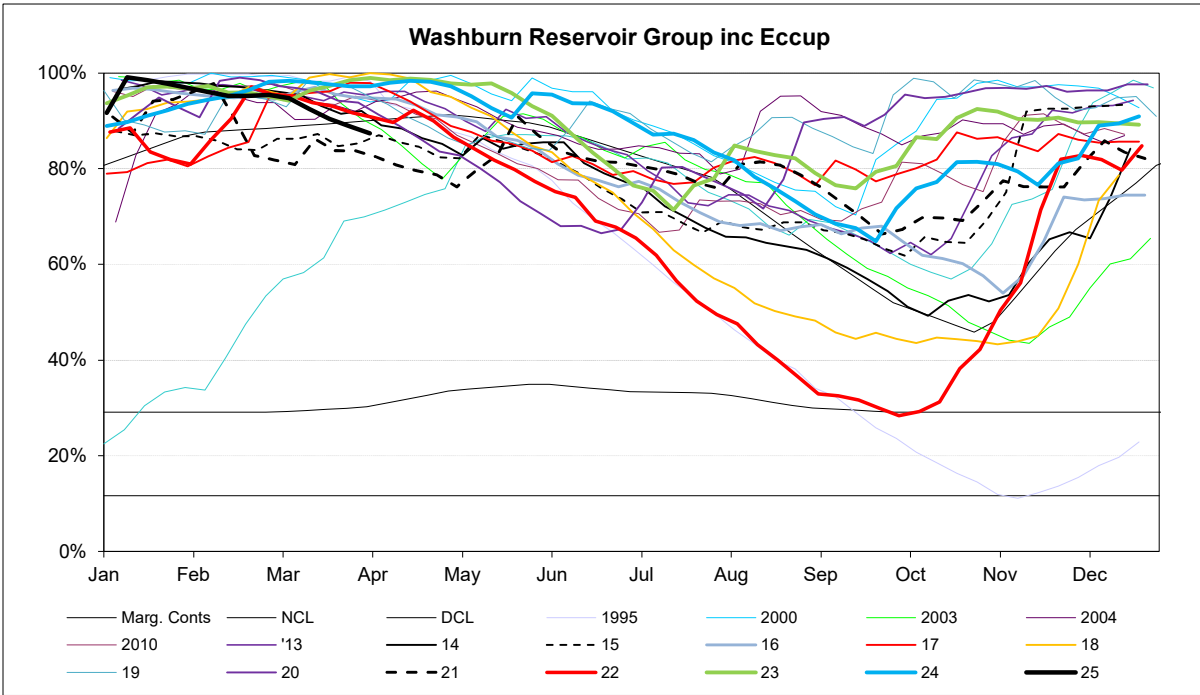
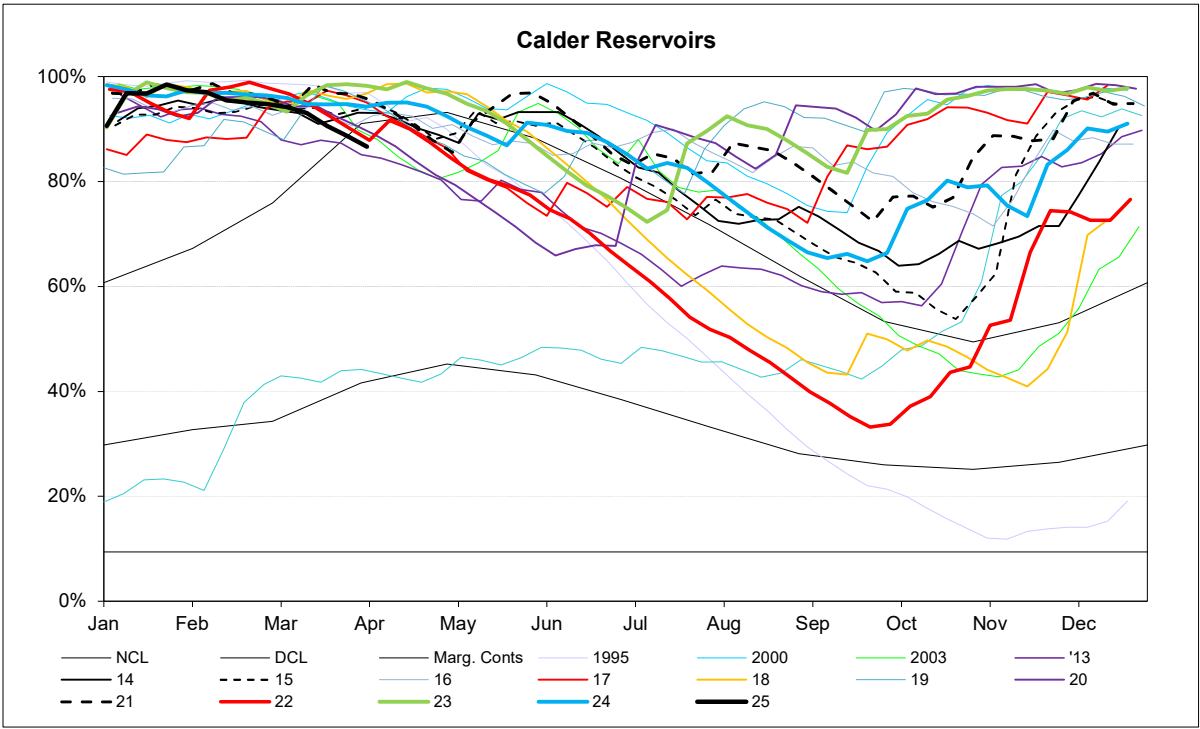


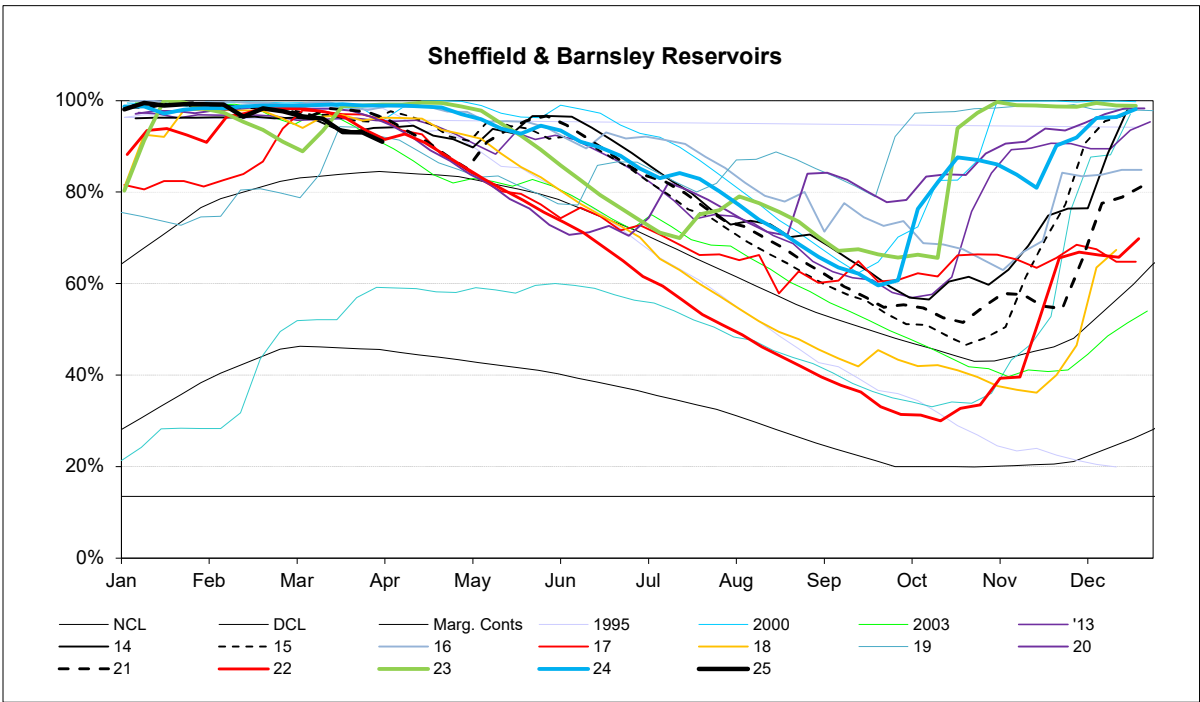




RESERVOIR STOCKS	31/03/2025		% Change	Planned Reservoir Safety Work	Required Drawdown & Duration	
Reservoir Group	% Stocks @	% Change	last week	Reason for Drawdown		
Calderdale (excl Withens Clough)	86.5%	-2.1%	-1.9%			
Boothwood/Ryburn (incl WC)	86.0%	-2.1%	-2.4%			
(Gorpley)	70.6%	-1.4%	-1.0%			
Huddersfield	85.8%	-1.9%	-1.8%			
Brownhill/Digley	90.4%	-2.5%	-0.9%			
Walshaw Dean Lower	83.8%	-3.9%	-3.7%	OSA Repairs	Apr 25 - May 25	86.0%
Widdop	83.2%	-0.1%	0.0%	Increase Drawdown Capacity	May 25 - June 25	21.0%
Widdop	83.2%	-0.1%	0.0%	Increase Drawdown Capacity	June 25 - Aug 25	10.0%
Brownhill	97.4%	-0.9%	-0.2%	Leakage Investigation	Apr 25 - Sept 25	51.0%
Longwood Comp IRE	N/A	N/A	N/A	Spillway Grouting	TBC	40.0%
Longwood ESR	N/A	N/A	N/A	Pipework Painting	TBC	76.0%
Calder Area Total	86.5%	-2.1%	-2.0%			
Nidd/Barden/Chelker	85.1%	-3.6%	-2.2%			
Grimwith	86.4%	-3.3%	-2.7%			
Worth Valley	86.7%	-2.9%	-1.9%			
March Ghyll	85.9%	1.2%	2.5%	Embankment Stability Works	Jan 23 - Dec 24	86.0%
Ponden	98.5%	-1.1%	0.4%	Repair Ground Anchor	Aug 24 - Mar 25	87.6%
Chelker	95.1%	0.2%	1.4%	Pointing	Nov 24 - May 25	34.0%
Chelker	95.1%	0.2%	1.4%	Pointing	Nov 24 - May 25	78.0%
North West Area Total	91.6%	-3.3%	-2.3%			
Washburn/Eccup Resrs.	87.4%	-1.5%	-1.5%			
Thornton Steward	95.7%	0.7%	-2.2%			
Leighton/Roundhill	91.7%	-1.7%	-1.3%			
Haverah Park	95.0%	-0.4%	12.5%			
Swinsty	60.7%	-3.6%	-7.1%	Outlet Channel Repairs	Dates tbc	93.0%
Thruscross	99.9%	-0.1%	0.3%	Bridge Repairs	Dates tbc	TBC
Cod Beck	100.0%	0.0%	0.0%	Inspection of Overflow and Upstream Face	Aug 24 - Mar 25	83.0%
Randy Mere				Upstream Face Repairs	TBC	17.0%
North Area Total	91.3%	-1.4%	-0.1%			
Don Valley & Winscar	93.9%	-1.1%	-0.1%			
Rivelin Valley	79.5%	-2.1%	7.4%			
Little Don	87.4%	-2.5%	-0.5%			
Ewden Valley	92.1%	-2.8%	-0.1%			
Loxley Valley	95.4%	-1.2%	0.0%			
Redmires	76.5%	-3.8%	-1.6%			
Redmires Upper	74.1%	-7.9%	-6.1%	Damage to Overflow Channel	Nov 23 - Oct 25	98.0%
Redmires Middle	79.5%	14.0%	5.2%	Damage to Overflow Channel	Nov 23 - Oct 25	89.0%
Redmires Middle	92.1%	-2.8%	-0.1%	Issues with Sheet Piles	Feb 25 - Oct 25	95.0%
Broomhead	100.0%	0.0%	0.0%	Install Overflow Debris Barrier	June 24 - Feb 25	95.0%
Strines	0.0%	0.0%	0.0%	Overflow Investigation	Apr 25 -Sept 25	58.0%
Rivelin Upper	0.0%	0.0%	0.0%	Siphon Commissioning	Feb 25 - Mar 25	0.0%
South Area Total	91.5%	-3.4%	-0.3%			
Tophill Low	82.3%	-0.4%	-1.1%			
Hull Aquifer	58.1%	-1.9%	-1.0%			
East Area Total	60.1%	-1.8%	-1.0%			
Regional Total (DCP) (inc East Area)	84.5%	-2.2%	-1.5%			
YORKSHIRE TOTAL (Supply) (not inc East Area)	87.7%	-2.3%	-1.5%			



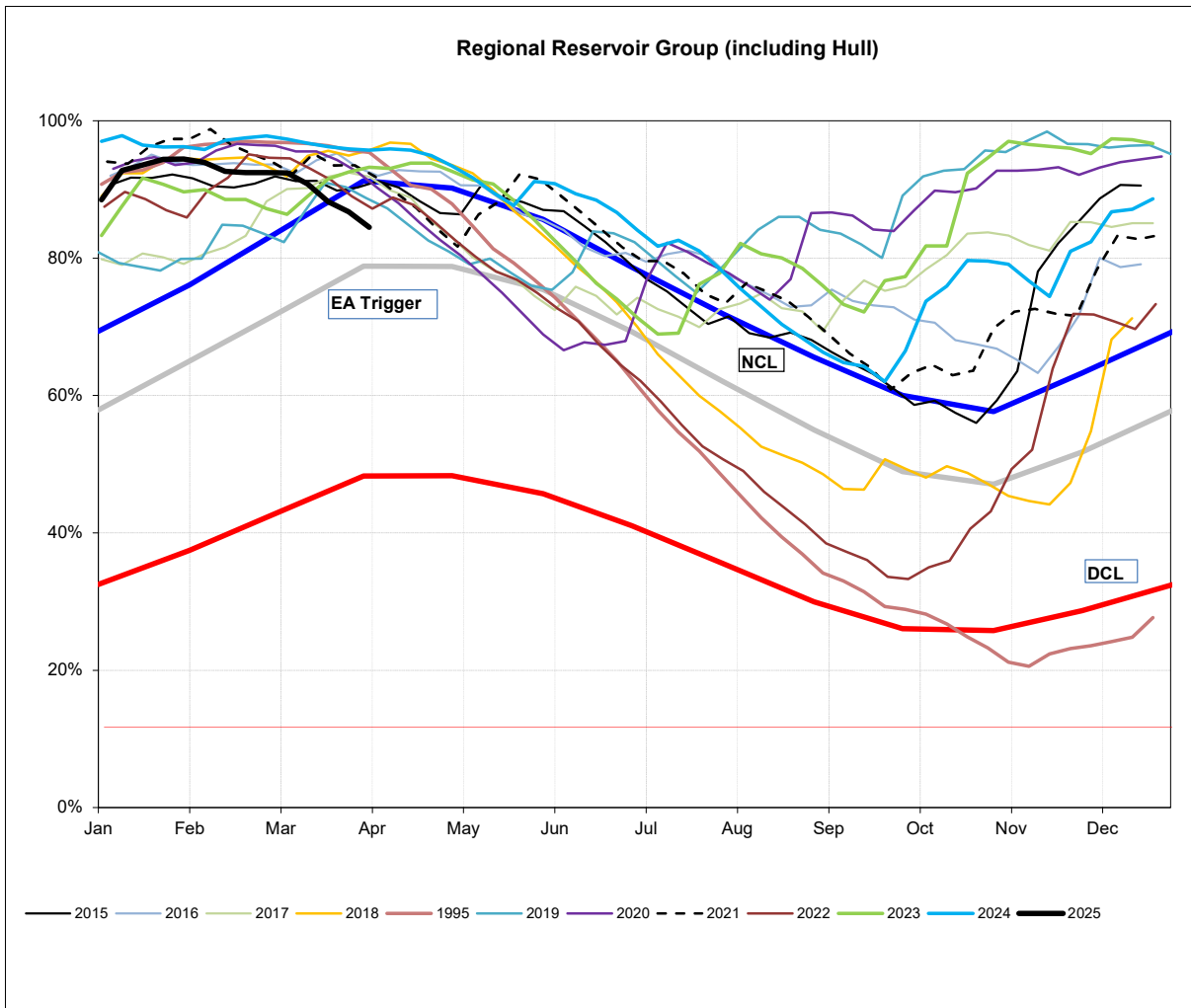




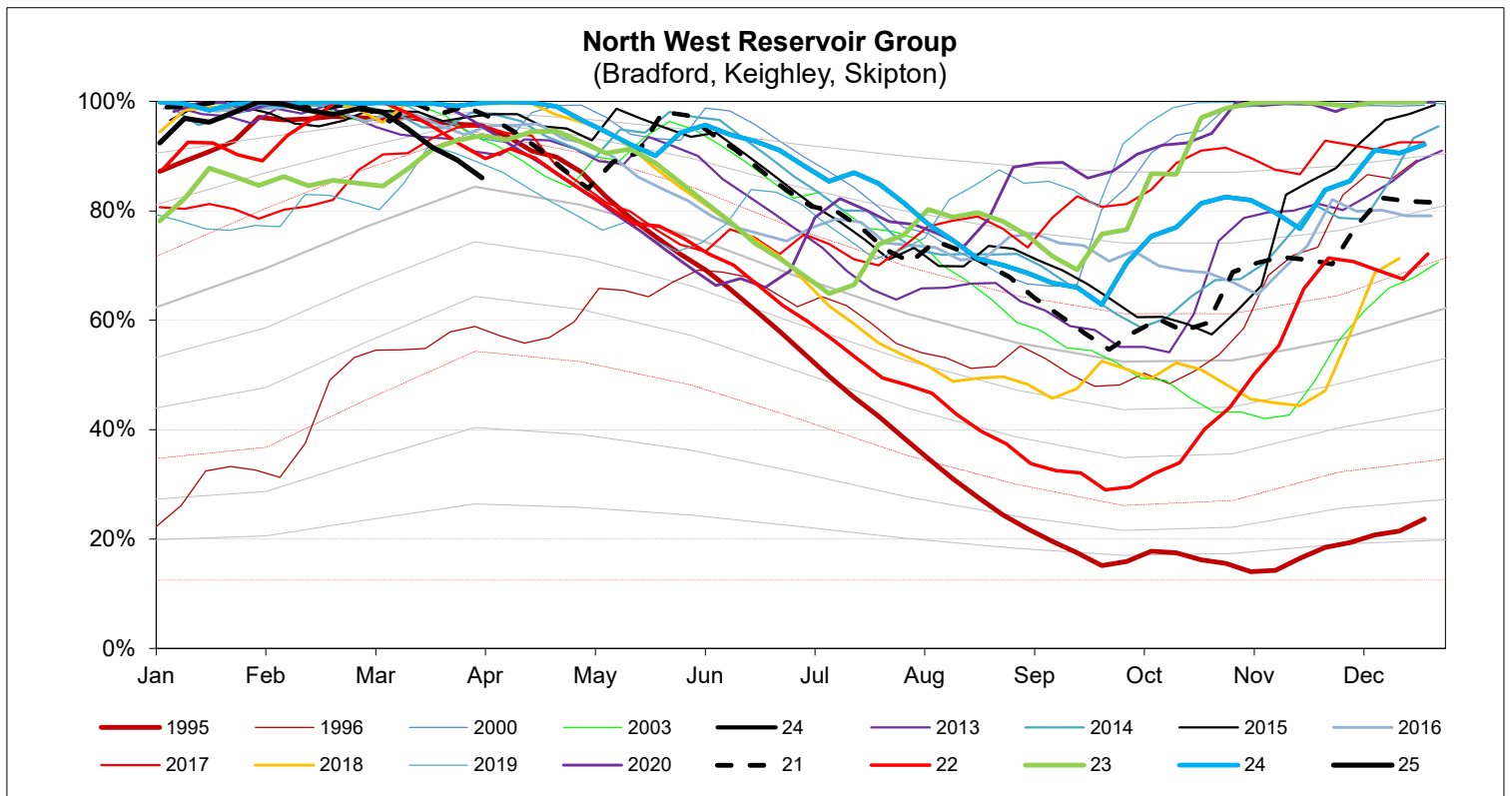
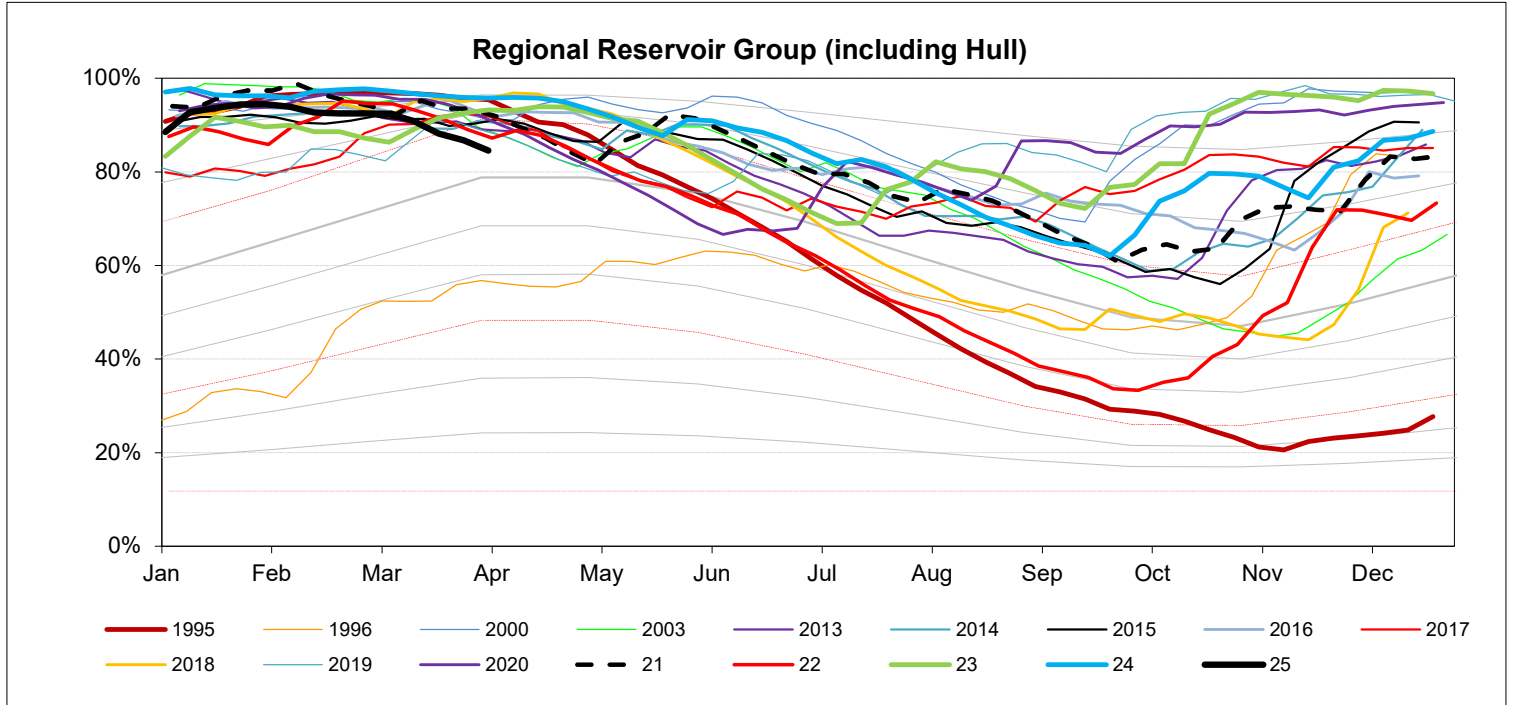
EA STOCKS REPORT

31 March 2025

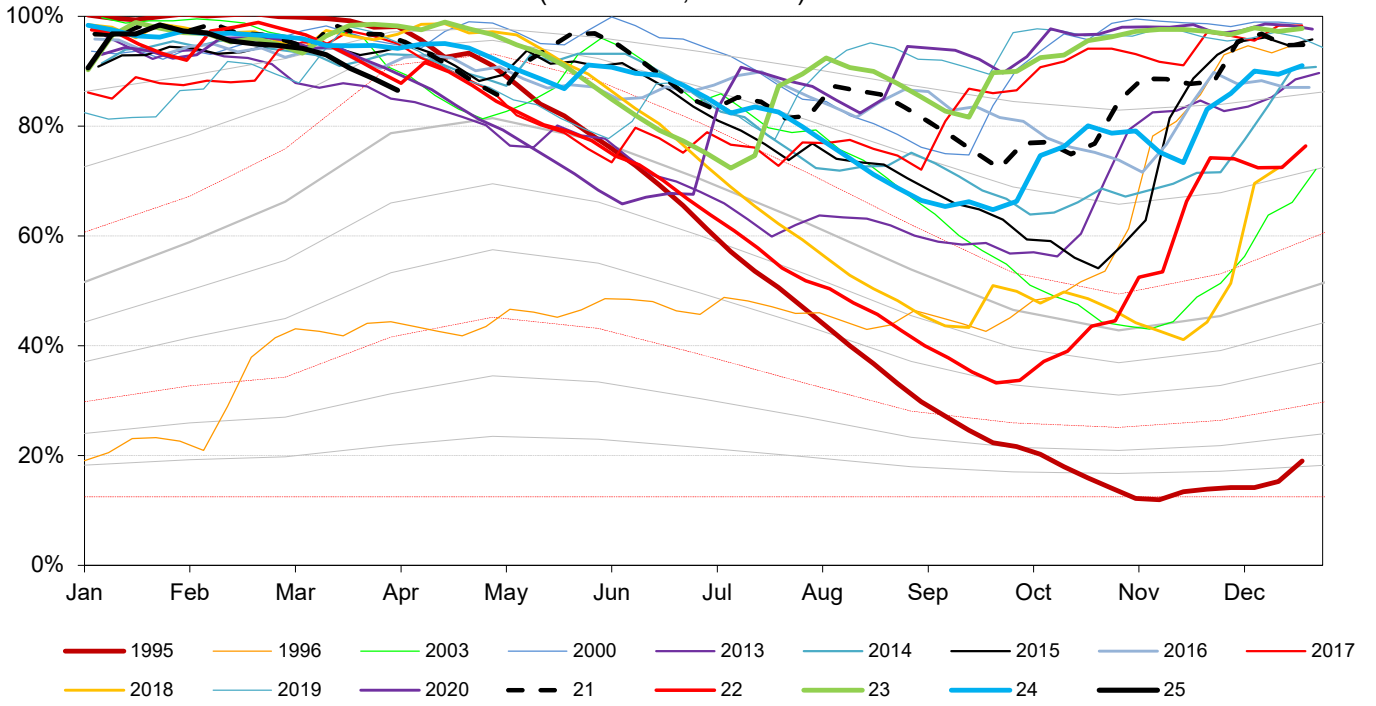
EA Stocks Report	31/03/2025						
	MI	%	% change		MI	%	% change
South West Area Supply Reservoirs				South Area Supply Reservoirs			
Calderdale Group	9629	88.6%	-2.1%	Don Valley	1838	88.4%	-2.3%
Huddersfield Group	12103	87.7%	-2.0%	Little Don	6438	87.4%	-2.5%
Brownhill/Digley excl Holme	5053	92.6%	-2.7%	Ewden Valley	4546	92.1%	-2.8%
Boothwood/Ryburn	10175	88.9%	-1.9%	Loxley Valley	6558	95.4%	-1.2%
				Rivelin	648	79.5%	-2.1%
South West Reservoir Group	38117	86.5%	88.7%	Redmires	2125	76.5%	-3.8%
Bradford Area Supply Reservoirs				South Reservoir Group	22154	89.1%	-2.3%
Gouthwaite	3835	66.0%	-9.7%				
Grimwith	18803	86.4%	-3.3%	Winscar Group	8930	95.0%	-0.9%
Nidd/Barden/Chelker	16312	85.1%	-3.6%				
Rombalds/Thornton Group	1934	86.6%	-2.2%	Compensation Reservoirs			
				Scout Dike	621	89.6%	-5.2%
Skipton Area Supply Reservoirs				Underbank	2855	99.6%	-0.4%
Embsay	690	95.5%	1.5%	Morehall	1949	89.7%	-1.9%
Worth Valley Group	2871	86.7%	-2.9%	Damflask	4899	95.9%	-1.5%
North West Reservoir Group	40609	86.0%	-3.3%	North Area Supply Reservoirs			
				Washburn	20423	87.4%	-1.5%
Compensation inc Silsden	2096	89.1%	-2.6%	Eccup	6074	86.7%	0.0%
Gouthwaite	3835	66.0%	-9.7%	Leighton/Roundhill	6783	91.7%	-1.7%
March Ghyll & Elslack Reservoirs excluded				Haverah Park	952	95.0%	-0.4%
for consistency with stocks predictions in WRAPSIM				Lumley Moor	357	93.5%	-2.0%
				Thornton Steward	908	95.7%	0.7%
East Area Supply Reservoirs							
Tophill Low	1386	82.3%	-0.4%	North Reservoir Group	29423	88.5%	-1.4%
Hull Aquifer	11040	58.1%	-1.9%				
				Lindley Wood Compensat	2323	79.5%	-3.4%
East Reservoir Group	12426	60.1%	-1.8%				
				Regional Reservoir Group	151659	84.5%	-2.2%
				(sum of South West, North West, East, South, North & Winscar)			



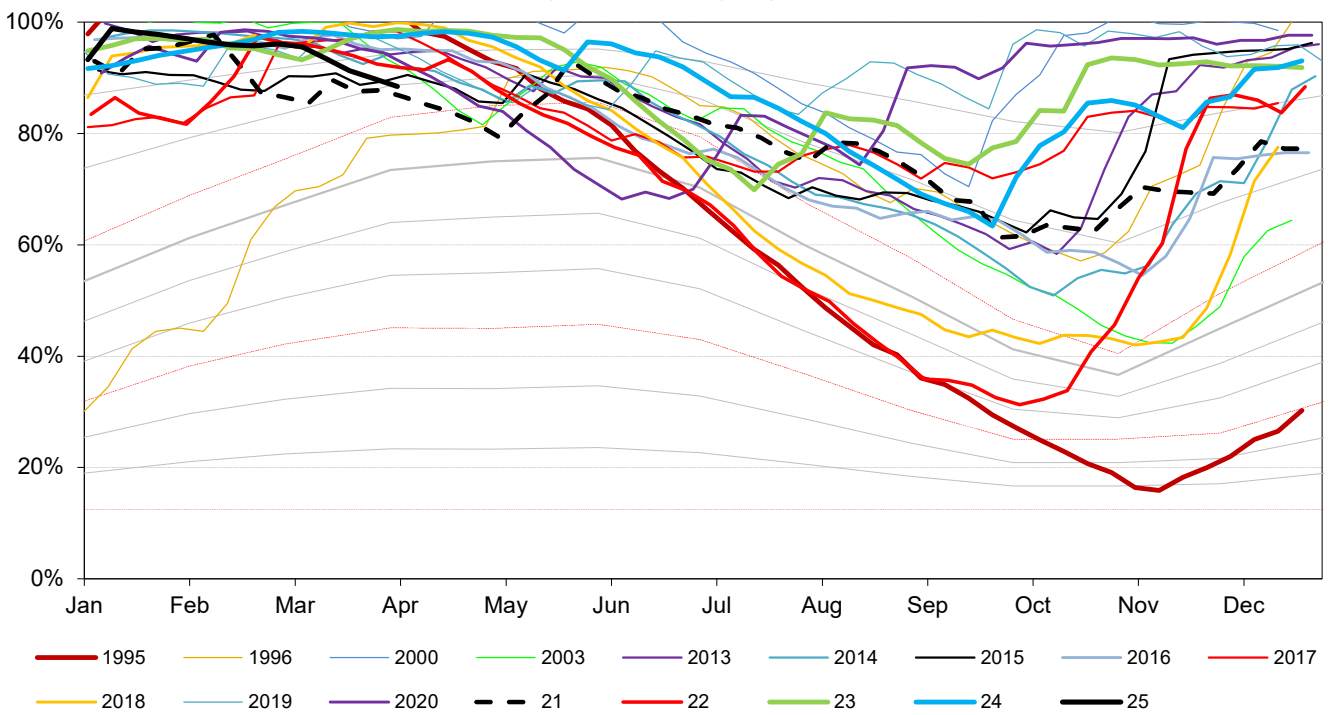
Triggers	
EA early warning (CL4)	Water resources to advise EA on production
Hosepipe Restrictions	When projected falling stocks fall below DCL
Drought Orders	When stocks are below DCL.



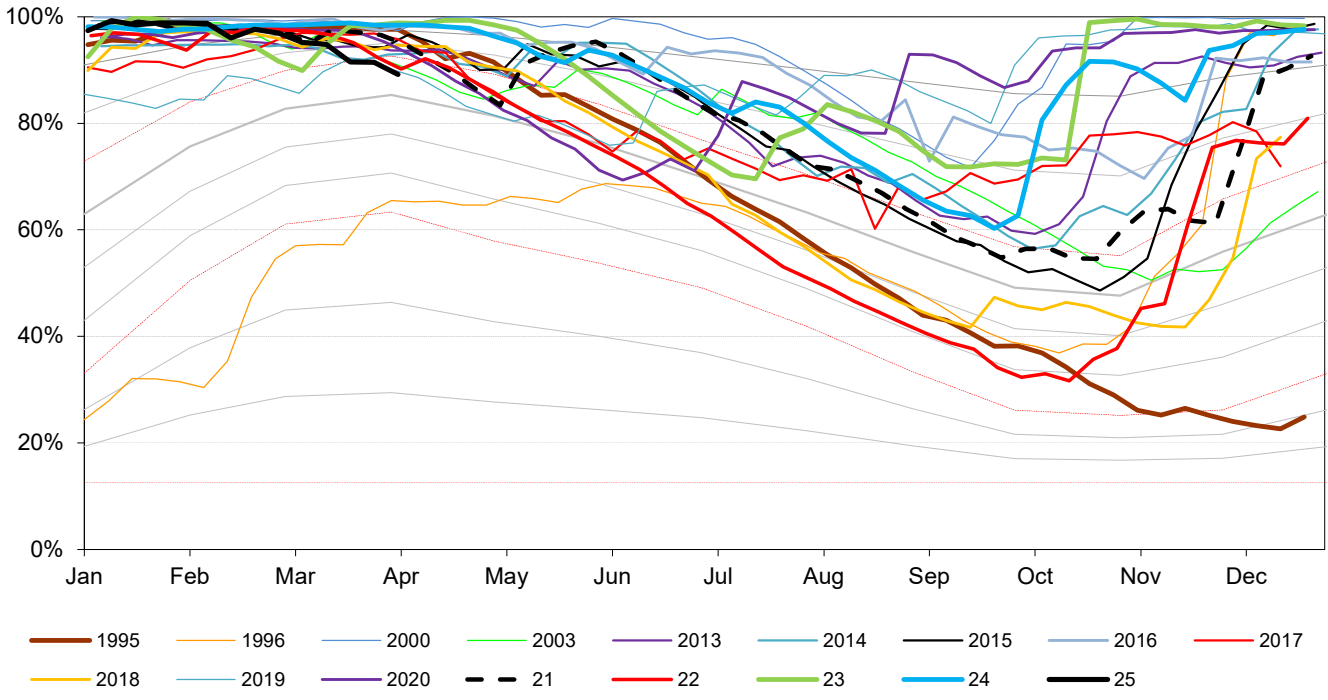
South West Reservoir Group (Calderdale, Kirklees)



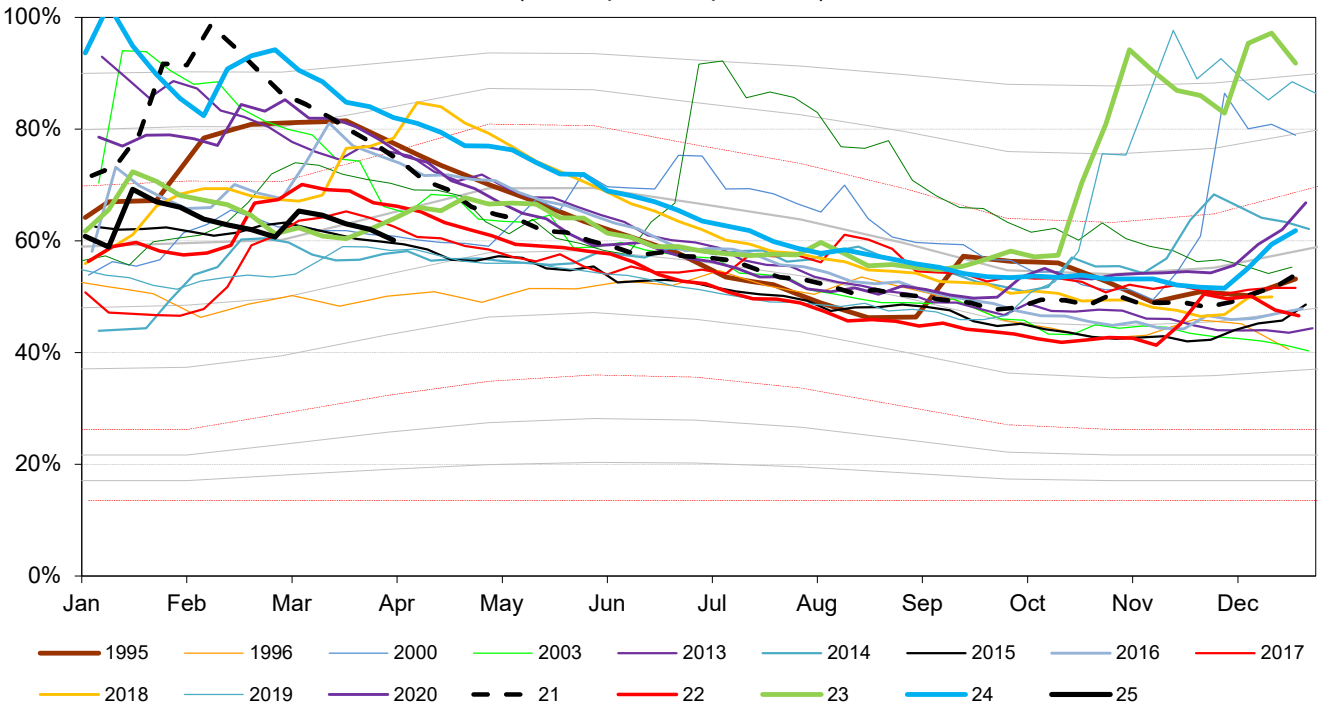
North Reservoir Group (Leeds, Harrogate)

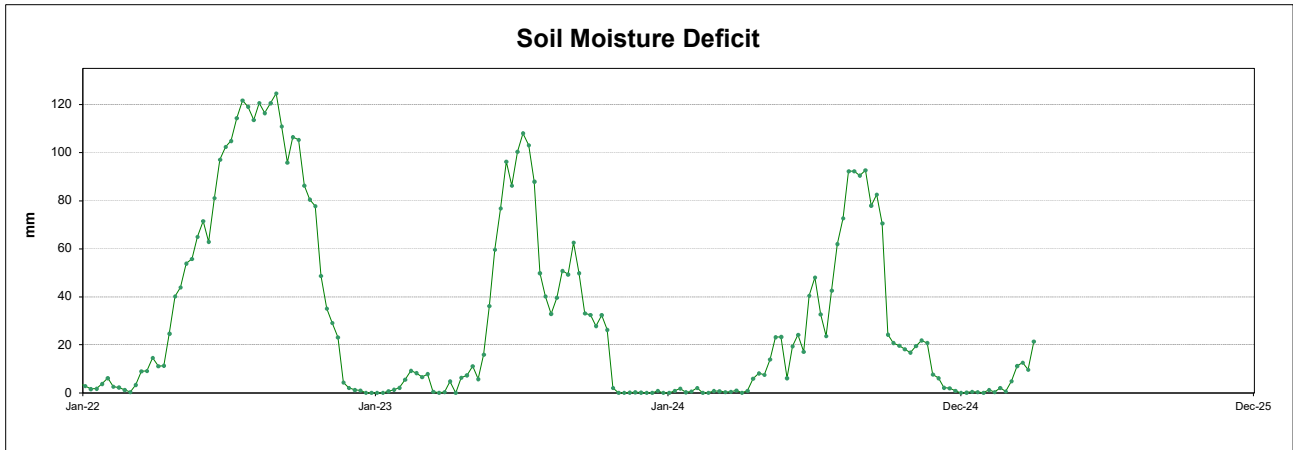
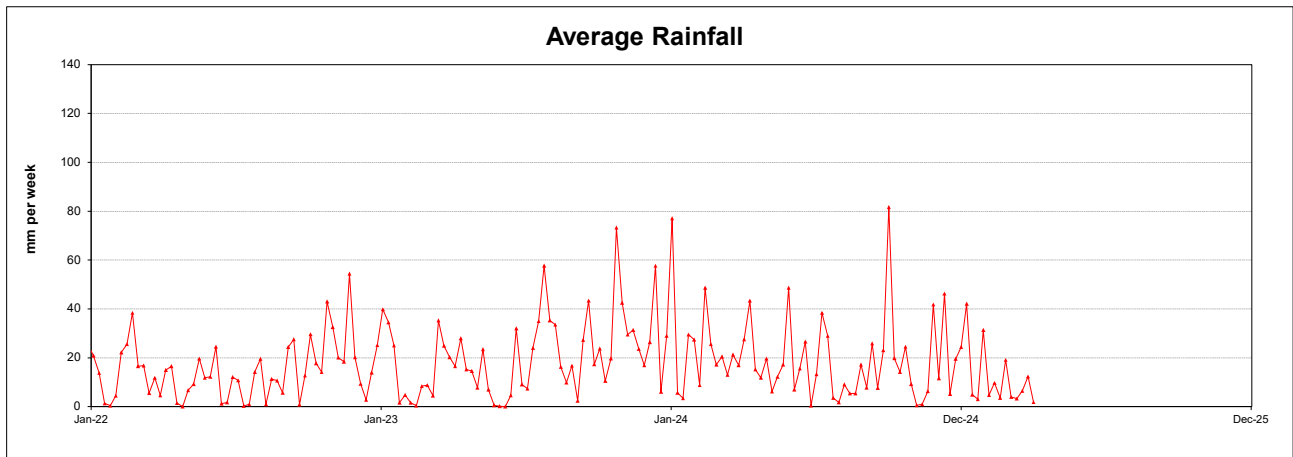
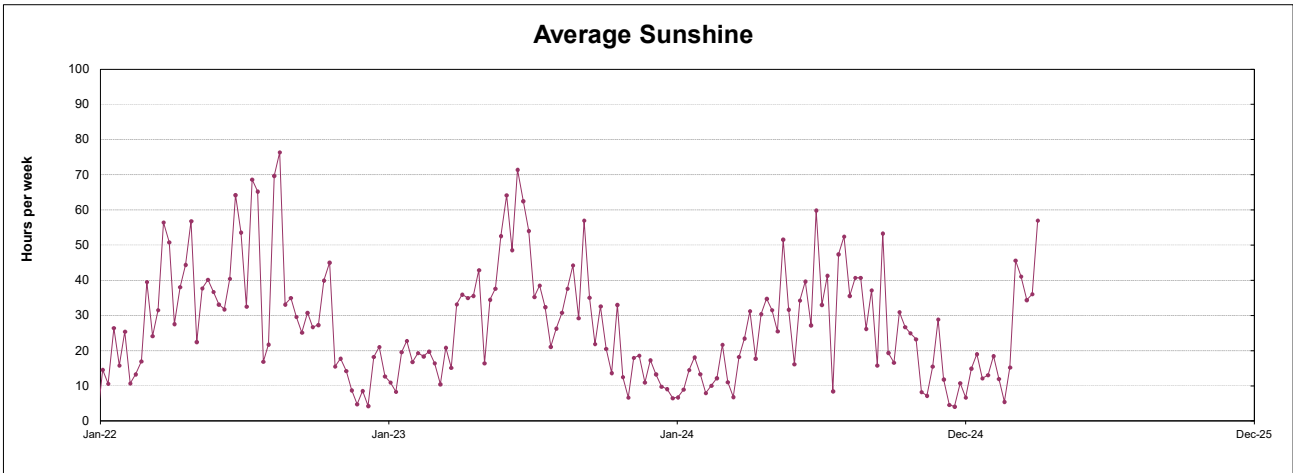


South Reservoir Group
(Sheffield, Barnsley)



East Reservoir Group
(Hull Aquifer, Tophill Low)





This page will normally be updated monthly (approx mid month).

This data may be subject to change following routine validation checks.

Where showing a negative value, this is normal at certain sources, due to the imports of water into that source being greater than the volumes abstracted.

Units in Ml

Serial No	Source	Reporting Year	February	Year to date Ml	Run date	
					01-Mar-25	
					Annual Limit	% of Annual Limit
02/27/023/332	Ainderby Steeple Boreholes	C	122.2	251	1760	14%
03/28/083/010	Armthorpe Boreholes	C	219.9	457	3319	14%
03/28/083/012	Austerfield Boreholes	C	203.0	431	11615	4%
02/27/022/020	Aysgarth & Newbiggin Springs	C	13.3	28	341	8%
02/27/012/035	Baitings, Ryburn & Blackhouse reservoirs	C	409.2	821	20457	4%
02/27/023/032	Bellerby Borehole and springs near Bellerby	F	69.8	488	1250	39%
02/27/022/209	Birk Gill & River Burn	C	675.0	1263	6400	20%
02/27/012/254	Boothwood Reservoir & associated catchwaters	C	248.7	479	20457	2%
02/27/10/112	Boshaw Whams Reservoir	C	0.0	0	55	0%
03/28/083/105	Boston Park Boreholes	C	179.2	366	3318	11%
02/27/024/305	Brayton Barff Boreholes	C	0.0	0	2250	0%
02/26/030/002	Bridlington	C	169.4	338	2500	14%
02/27/005/031	Broomhead Reservoir	F	1021.6	1198	12410	90%
02/26/030/004	Burton Agnes	C	71.9	155	1000	16%
02/27/018/080	Carlton Hanger Lane Boreholes	C	312.9	637	3500	18%
02/27/018/079	Carlton Mill Lane Boreholes	C	164.2	324	3800	9%
02/27/019/009	Carr Bottom Reservoir, Burley Woodhead	C	9.3	18	409	4%
02/27/023/340	Catterick Boreholes	F	198.0	2168	3650	59%
02/27/027/136	Cayton Carr Lane Boreholes	C	-10.3	37	3928	1%
02/27/027/163	Cayton Station Road Borehole	C	165.9	302	2646	11%
02/27/019/137	Chelker Reservoir	C	184.2	632	5000	13%
02/27/023/031	Coalsgarth Springs	C	5.9	12	750	2%
02/27/011/064	Colne Valley Catchwaters	F	50.3	1950	5840	33%
02/26/032/126	Cottingham Well	C	1022.9	2036	18184	11%
02/27/018/081	Cowick Boreholes	C	352.9	722	5250	14%
02/27/023/046	Cranehow & Downholme Springs	C	0.0	0	318	0%
02/27/023/030	Crumma, Newsham & Gandale Springs	C	58.7	123	1364	9%
02/27/005/030	Dale Dyke & Agden Reservoirs	F	1042.3	9760	21412	46%
02/27/012/261	Dean Head & Scammonden	F	24.8	960	3650	26%
02/27/19/121	Dib Spring, Hawkswick	C	0.0	0	27	0%
02/26/032/126	Dunswell Well	C	438.3	938	16593	6%
NE/27/025/021	East Ness Boreholes	F	249.4	3063	5680	54%
02/26/031/087	Elmswell Wold Borehole	C	0.0	1	1273	0%
02/27/015/045	Embsay Reservoir	C	105.9	248	1846	13%
02/27/016/196	Esholt Sewage Treatment Works	C	0.0	0	88	0%
02/26/032/124	Etton Boreholes	C	89.6	246	5100	5%
03/28/083/012	Finningley Boreholes	C	288.4	596	6780	9%
02/27/022/328	Fossdale (High Shaw) Springs	C	8.7	18	227	8%
02/27/018/120	Goosehouse Boreholes	F	149.1	2631	3500	75%
02/27/012/043	Gorpley Reservoir	C	0.0	0	1823	0%
02/27/016/022	Graincliffe Reservoir	F	87.8	1469	2728	54%
02/27/012/037	Green Withens Ringstone Res & catchwater	C	382.2	778	20457	4%
02/27/019/051	Greenhow Tunnel (Nidd Aqueduct) Dale Head Intake	C	0.0	0	214	0%
02/27/019/052	Greenhow Tunnel (Nidd Aqueduct) No.2 Access Shaft	C	0.0	0	6819	0%
NE/27/019/005	Grimwith Reservoir to Nidd Aqueduct	F	488.4	2505	3650	69%
02/26/030/003	Haisthorpe Boreholes	C	185.2	529	5000	11%
03/28/083/012	Hatfield Boreholes	C	117.3	232	3319	7%
03/28/083/100	Hatfield Woodhouse Boreholes	C	0.0	0	3320	0%
02/27/029/010	Hazel Head Springs	C	48.5	101	1162	9%
02/27/012/041	Hebden, Luddenden & Hebble Valley Resrs	F	1025.7	11227	15695	72%
02/27/018/077	Heck Boreholes	C	0.0	0	2489	0%
03/28/083/012	Highfield Lane Boreholes	C	416.4	843	11615	7%
02/27/023/685	Hollin Hill Borehole	F	4.6	21	45	47%
02/27/010/063	Holmestyes & Digley Reservoirs	F	237.6	2722	5840	47%
02/27/22/024	Horsehouse Spring, leyburn	C	0.0	0	33	0%
02/27/027/002	Howe Hill Well	F	77.5	869	1014	86%
02/26/031/006	Hutton Cranswick	C	42.7	90	796	11%
02/27/005/012	Ingbirchworth Reservoir & Annat Royd Intake	C	266.0	527	3637	14%

02/27/005/202	Ingbirchworth South Borehole	F	4.1	47	132	35%
02/27/027/058	Irton	C	468.0	956	8215	12%
02/27/21/015	John O'Gaunts and Beaverdyke Reservoirs	C	0.0	0	1909	0%
02/27/014/010	Keighley Moor Reservoir	F	40.3	370	6951	5%
02/27/025/128	Keld Head Boreholes	C	169.8	355	3319	11%
02/26/032/126	Keldgate Boreholes	C	277.9	575	5819	10%
02/26/031/002	Kilham	C	0.0	12	1818	1%
02/27/005/032	Langsett Reservoir	F	1157.1	11444	17155	67%
02/27/022/210	Leighton Reservoir & Spruce Gill stream intake	C	325.4	770	13184	6%
03/28/083/107	Littleworth Borehole	C	0.0	0	1659	0%
02/27/028/270	Loftsome Bridge ASR Borehole No.1	C	0.0	0	150000	0%
02/27/014/009	Lower Laithe Reservoir	F	294.1	2414	6951	35%
02/27/005/011	Midhope Reservoir & Knoll Brook Intake	F	346.0	3341	17155	19%
02/26/034/006	North Newbald	C	0.0	0	548	0%
03/28/083/012	Nutwell Boreholes	C	211.5	448	4983	9%
02/27/019/006	Panorama, Hilltop & Old Reservoirs & Springs	C	55.7	87	1000	9%
02/27/018/078	Pollington Boreholes	C	192.3	368	5000	7%
02/27/014/058	Ponden Reservoir	F	4.3	940	6951	14%
02/27/016/023	Reva Reservoir, Hawkesworth	C	142.7	284	1364	21%
02/27/005/029	Rivelin and Redmires Reservoirs	F	742.9	4226	8030	53%
02/27/028/017	River Derwent at Elvington	F	4972.1	49950	75000	67%
02/27/028/083	River Derwent at Loftsome Bridge	F	1730.5	21730	30400	71%
02/27/029/012	River Esk	C	265.2	539	7823	7%
02/26/031/047	River Hull & West Beck	C	891.1	2117	25000	8%
02/26/032/194	River Hull for Sewer Cleaning	C	0.0	0	91	0%
02/27/024/078	River Ouse at Acomb	F	879.2	9290	35000	27%
02/27/024/158	River Ouse at Moor Monkton	F	2037.0	27168	73000	37%
02/27/022/214	River Ure at Kilgram Bridge	F	203.1	3325	15000	22%
02/27/020/196	River Wharfe at Arthington	F	7.5	358	19009	2%
02/27/019/129	River Wharfe at Lobwood	F	1468.1	19430	27392	71%
03/28/083/012	Rossington Bridge Boreholes	C	0.0	0	5172	0%
02/27/022/027	Roundhill and Lumley Moor Reservoirs	C	53.8	113	3500	3%
02/27/005/013	Royd Moor Reservoir & Intakes	C	167.6	337	2955	11%
02/27/021/016	Scargill Reservoir	C	98.5	211	1932	11%
02/27/021/092	Scarhouse & Angram Resvrs with tunnel & catchwater	C	3056.2	6351	38164	16.6%
02/27/15/149	Silsden Beck, Stilling-Basin at foot of Silsden Reservoir Ent	C	0.0	0	10	0%
02/26/032/126	Springhead Well	C	650.7	1416	13638	10%
02/27/022/021	Stalling Busk & Marsett Springs	C	0.0	0	33	0%
02/27/022/208	Stock Beck, Carlesmoor Beck & River Laver	C	677.0	1117	3500	32%
02/27/023/684	Stubbing Nook Borehole	F	0.0	13	135	10%
03/28/083/012	Thornham Boreholes	C	282.2	583	6213	9%
02/27/016/160	Thornton Moor & Stubden Reservoirs	C	312.2	636	6214	10%
02/27/012/038	Turvin Clough	C	0.0	6	4014	0%
02/27/019/054	Upper & Lower Barden Reservoirs	C	251.7	349	14223	2%
02/27/020/088	Washburn Valley Reservoirs	C	2595.8	5183	43800	12%
02/27/015/041	Watersheddles Reservoir	F	164.6	1502	6951	22%
02/27/016/021	Weecher Reservoir	C	27.9	43	909	5%
02/27/011/065	Wessenden Valley, Blackmoorfoot & Deerhill	F	986.3	9016	12410	73%
02/27/023/034	West Stonesdale (Garland Hill) Springs	C	0.0	0	282	0%
02/27/015/042	Whinney Gill & Jenny Gill Reservoirs	C	7.6	14	377	4%
02/27/005/026	Winscar, U & L Windleden, Harden & Snailsden	F	134.1	6525	10140	64%
02/27/012/036	Withens Clough Resr & Catchwater	C	186.6	422	3319	13%
02/27/010/011	Yateholme, Riding Wood, Ramsden & Brownhill	F	159.9	2747	6820	40%

Licences with Aggregated Annual Quantities	Reporting Year	February	Year to date MI	Annual Limit	% of Annual Limit
Baitings, Ryburn, Boothwood, Green Withens	C	1040	2078	20457	10%
Langsett, Midhope	F	1503	14785	17155	86%
Worth Valley	F	503	5225	6951	75%
River Derwent (Elvington, Loftsome)	F	6703	71680	94841	76%
Cayton, Irton	C	624	1295	10700	12%
Selby Boreholes	C/F	1171	4681	25283	19%
Doncaster Wellfield	C	1918	3957	30295	13%
Doncaster Sub Group	C	1519	3134	26049	12%
Austerfield & Highfield Lane	C	619	1275	9956	13%
Hull Groundwater Sources	C	2390	4966	32850	15%

Third Party Agreements (Calendar Year)

Units in MI

Run date

01-Mar-25

Source	Reporting Year	February	Year to date MI	Annual Limit	% of Annual Limit
CRT, Hudds Narrow Canal	C	19	23	1273	2%
Severn Trent Ladybower Reservoir	C	1397	2988	21550	14%

Reading date:

02-Jan-25

	Reporting Year	Year to date MI	Annual Limit	% of Annual Limit
Winscar To Langsett Transfer Usage	F	1480	2482	60%