

1. Rainfall

The Yorkshire Region Has Received 141.0% of LTA for April

2. Reservoirs (surface water supply reservoirs not including Hull)

Over the Past Week Our Reservoir Stocks Have Decreased By -2.18% To 91.6%

3. Rivers

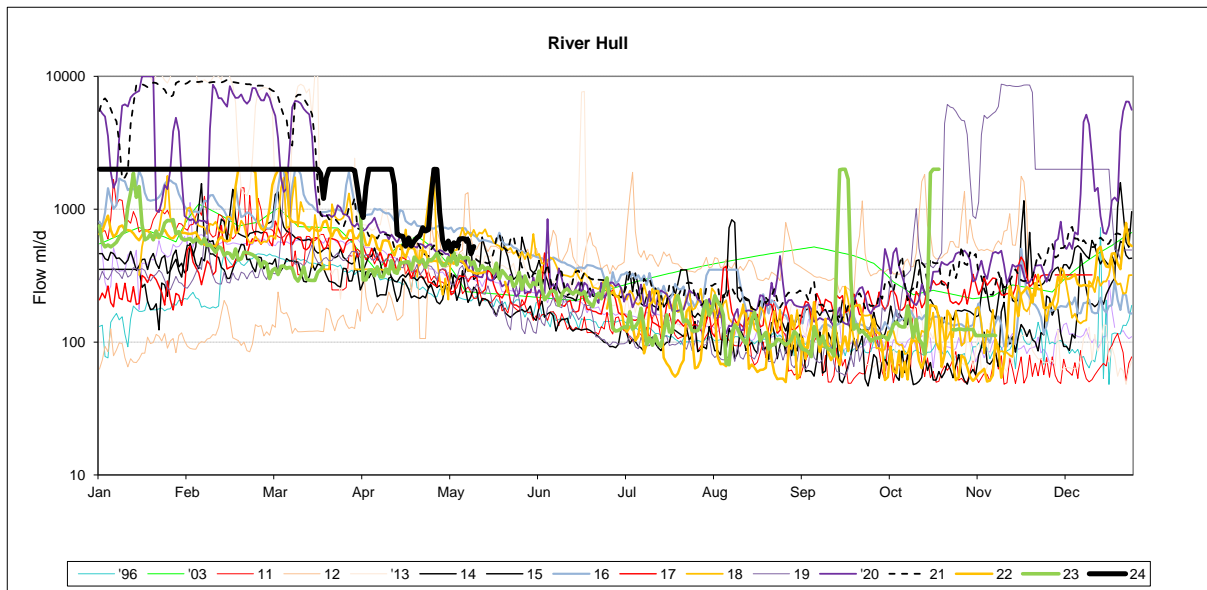
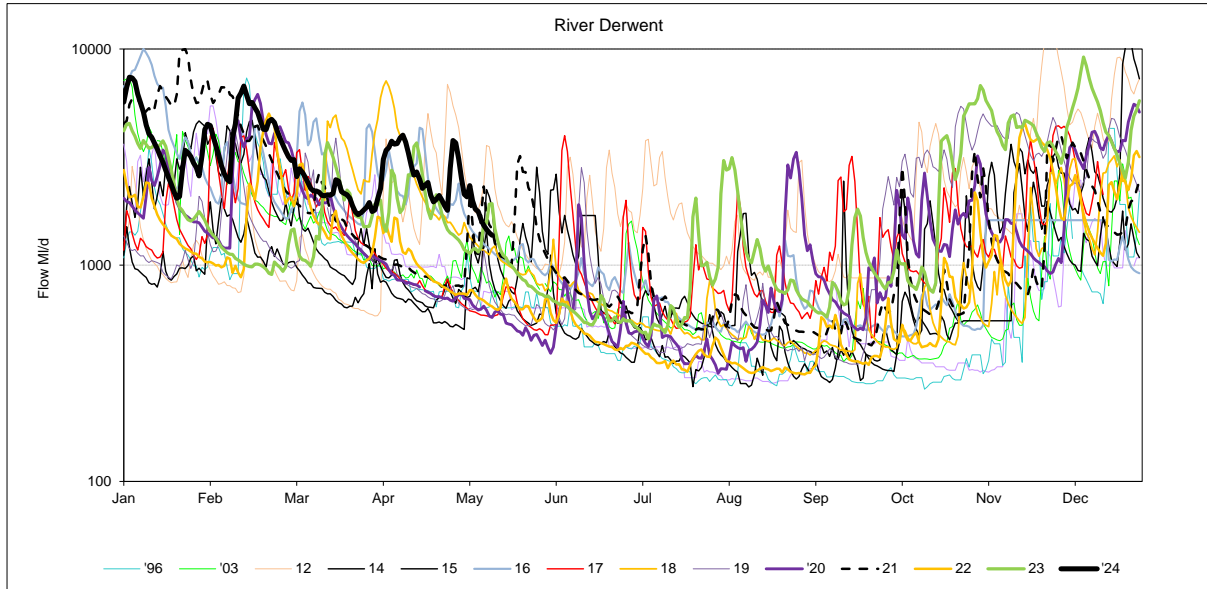
Some of Our Rivers are Below Critical Level

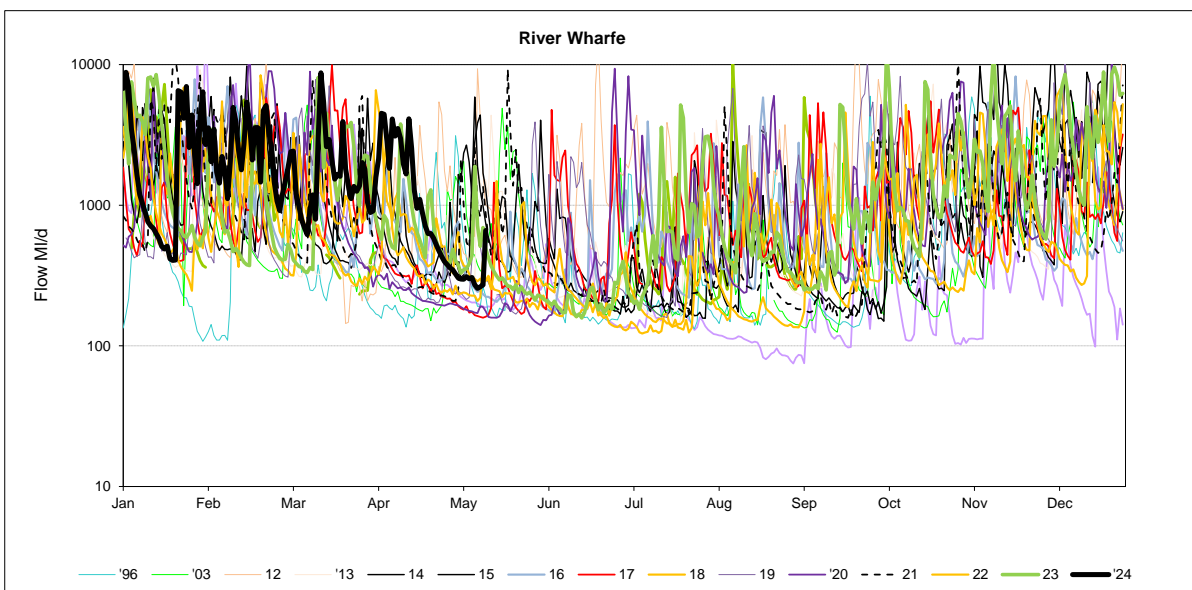
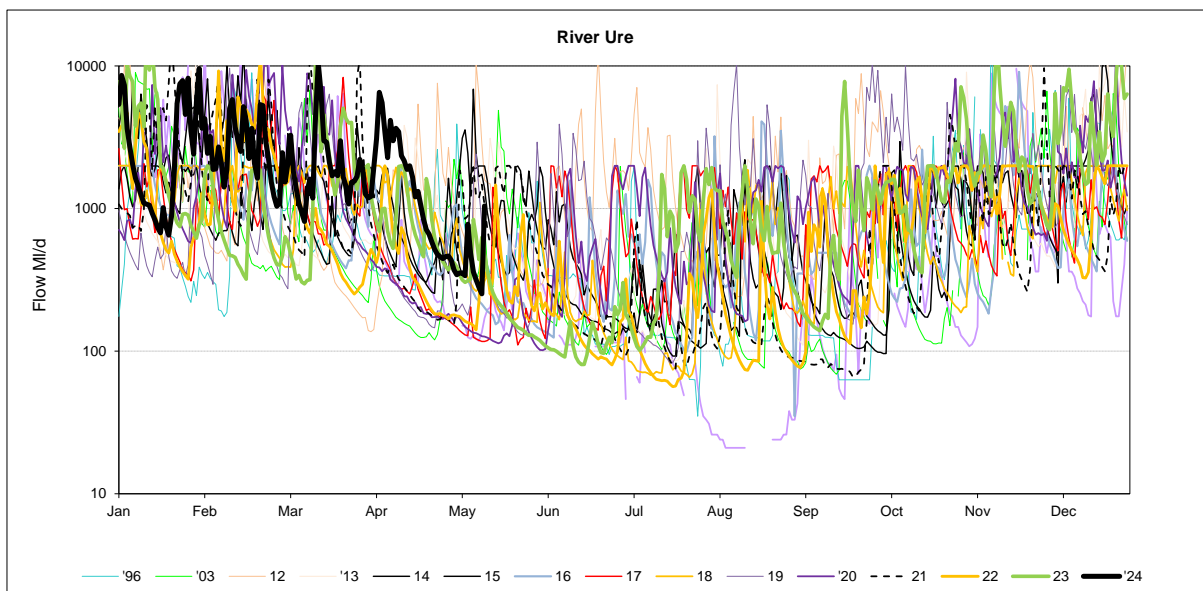
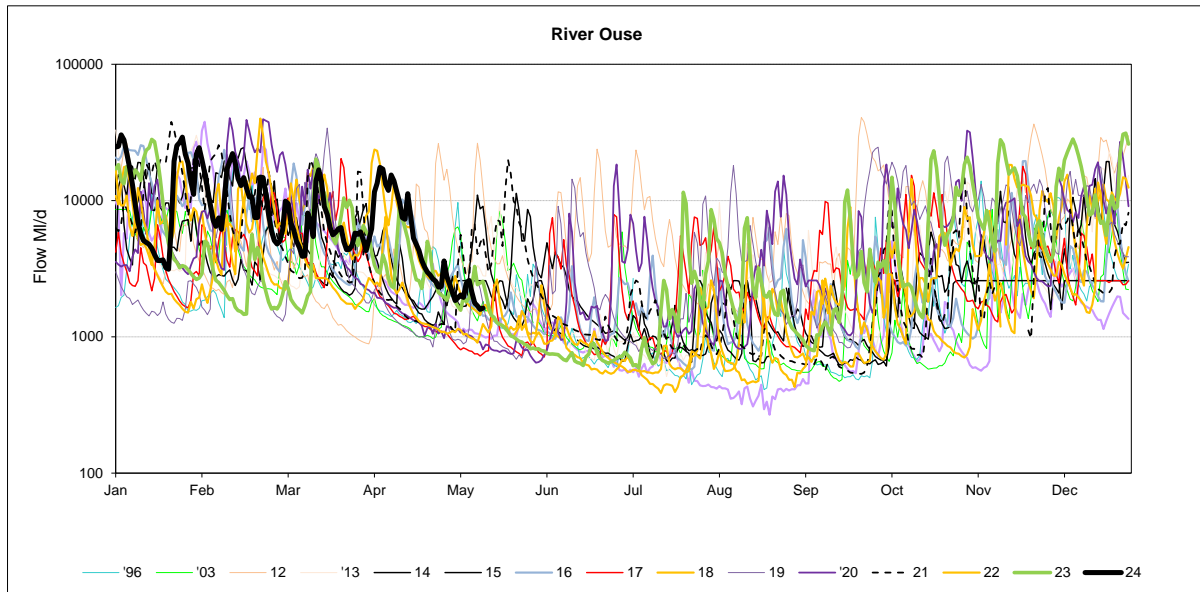
4. Demand

Regional Demand = 1294.4 Ml/d (including York)

5. Comments

	Mon 29-Apr	Mon 22-Apr	Mon 15-Apr	Mon 08-Apr	Critical flow bands
Derwent	✔ 3776	✔ 1964	✔ 2613	✔ 3633	305
Hull (using gauged (residual flows) only from 2011)	✔ 2000	✔ 576	✔ 1534	✔ 2000	45 / 159 / 227
Ouse	✔ 3603	✔ 3258	✔ 7280	✔ 13102	400 / 650 / 1000
Ure	✔ 460	✔ 713	✔ 1878	✔ 2275	50 / 163 / 300
Wharfe	⚠ 377	✔ 629	✔ 4121	✔ 1825	252 / 389 / 488 / 580





Yorkshire Region (Met Office)				England/Wales	
Month	mm	LTA	LTA(%)	mm	LTA(%)
September	84	71	119%	92	123%
October	148	84	176%	156	156%
November	105	90	117%	120	118%
December	162	89	182%	160	155%
January	100	79	127%	96	103%
February	97	69	141%	140	191%
March	79	59	133%	103	160%

SOURCE OF DATA : Hydrological Summary of Gt Britain, Institute of Hydrology

Yorkshire Water Services Data			
Rainfall Station	Total April	LTA April	LTA % April
Tophill	NDA	48	0%
Cottingham	NDA	50	0%
Bridlington	107.7	50	215%
Roundhill	114.0	78	146%
Fewston	88.9	70	127%
Osmotherley	95.8	55	174%
Scar House	133.0	94	141%
Watersheddes	126.4	91	139%
Gt Walden Edge	128.9	91	142%
Walshaw Dean	128.2	97	132%
Blackmoorfoot	117.8	82	144%
Ramsden	135.9	108	126%
Redmires	103.4	84	123%
Langsett	96.9	84	115%
YORKSHIRE REGION	115.4	81.8	141%
EAST REGION	95.8	51.5	186%
PENNINE (WEST)	115.4	84.9	136%

NDA= No data available/lack of readings, impacts % LTA for the month
SOURCE OF DATA : YWS RAIN GAUGES- weekly, so monthly data may include previous month or miss start of month

MAJOR SOURCE OUTPUTS

29 April 2024

25/04/2024

	Operational Maxima & Design Yields (Ml/d)	WRAP Targets Week Beginning - 25/04/2024	Daily Average Previous 5 Days Starting - 25/04/2024	WRAP Targets Week Starting - 18/04/2024	Daily Average Week Starting - 18/04/2024
WATER TREATMENT WORKS					
CENTRAL					
ECCUP NO 1 WTW	100	53	56	53	54
ECCUP NO 2 WTW	60	44	35	44	38
HEADINGLEY	95	63	66	63	68
HARLOW HILL	41.5	27	25	27	26
THORNTON STEWARD	22.5	20	22	20	22
EAST					
EAST NESS	17	8	8	8	10
IRTON	23.5	13	13	13	13
RUSWARP	12	7	7	7	7
TOPHILL LOW	68	40	0	40	0
KELDGATE	90	60	71	60	77
NORTH WEST					
CHELLOW	175	148	145	148	147
GRAINCLIFFE	60	38	38	38	37
SLADEN VALLEY	12	8	9	8	9
OLDFIELD	10.1	6	6	6	6
EMBSAY	25	17	19	17	19
SOUTH					
INGBIRCHWORTH	20	20	23	20	25
LANGSETT	56	36	51	36	52
(TOTAL)	75	56	74	56	77
EWDEN	40	35	35	35	35
LOXLEY	40	26	30	26	31
(TOTAL)	80	61	66	61	65
RIVELIN	75	64	73	64	73
SOUTH WEST					
ALBERT	55	51	45	51	48
FIXBY	30	21	20	21	20
KIRKHAMGATE	30	17	16	17	19
(TOTAL)	115	89	81	89	87
BLACKMOORFOOT	23	20	17	20	19
LONGWOOD	32	27	19	27	18
(TOTAL)	55	47	36	47	37
HOLMBRIDGE	29	19	18	19	23
GRID					
ELVINGTON	260	159	165	159	155
LOFTSOME BRIDGE	110	75	66	75	83

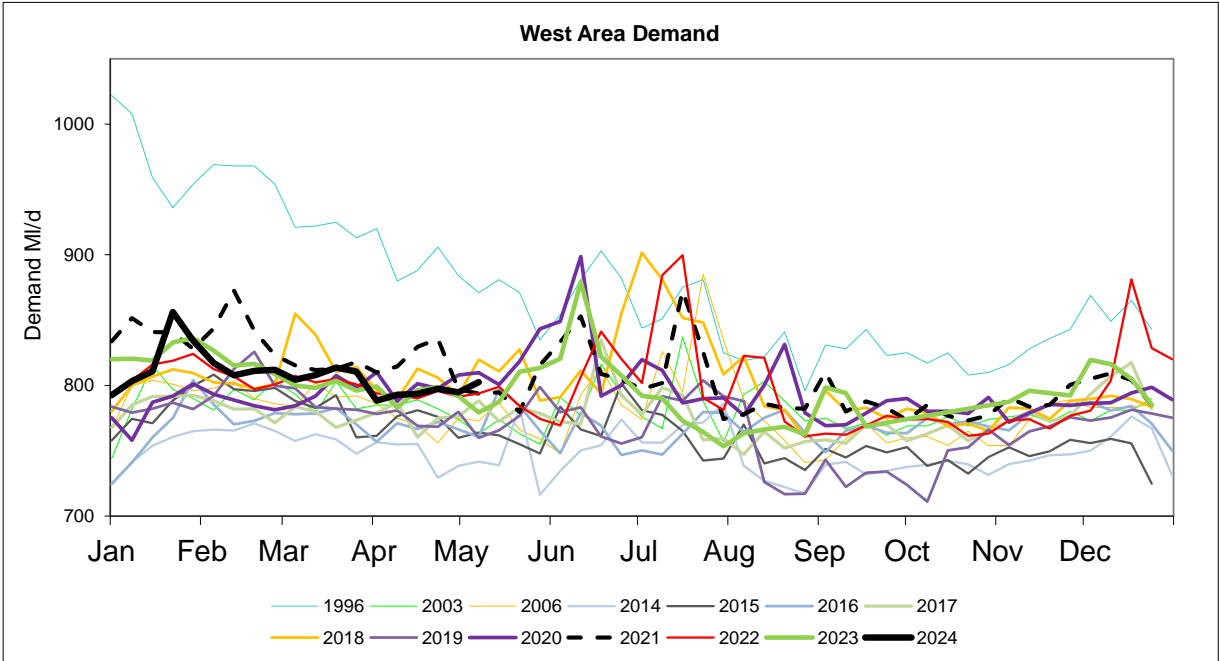
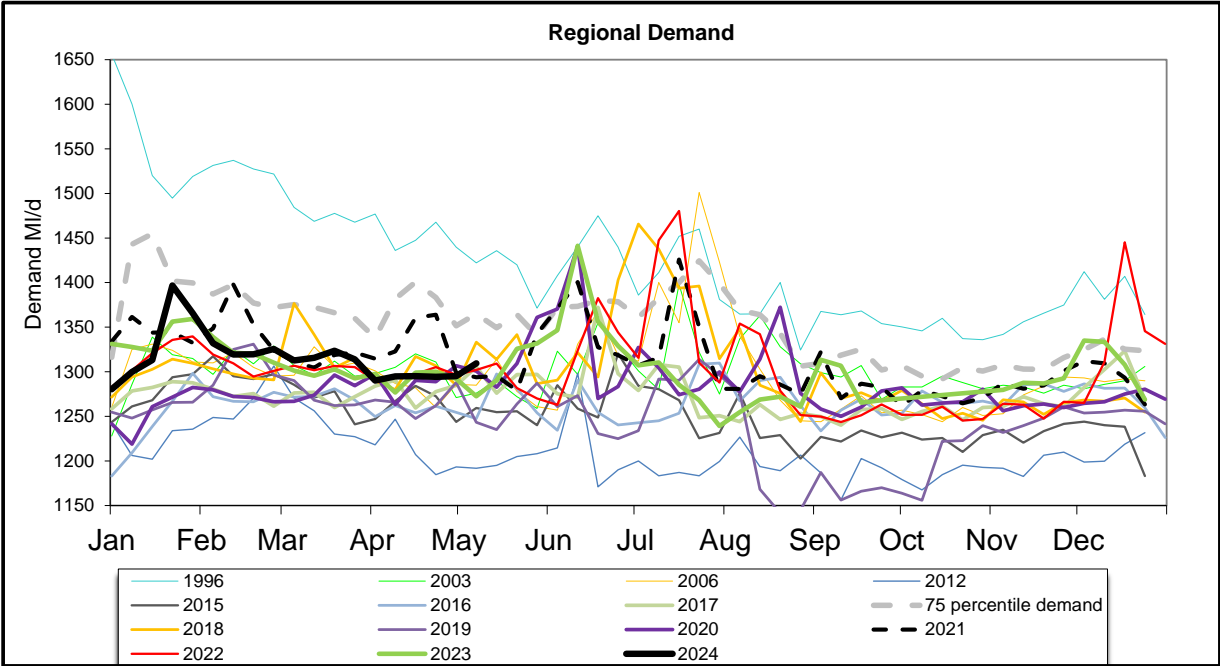
Daily Average Demand MI/d

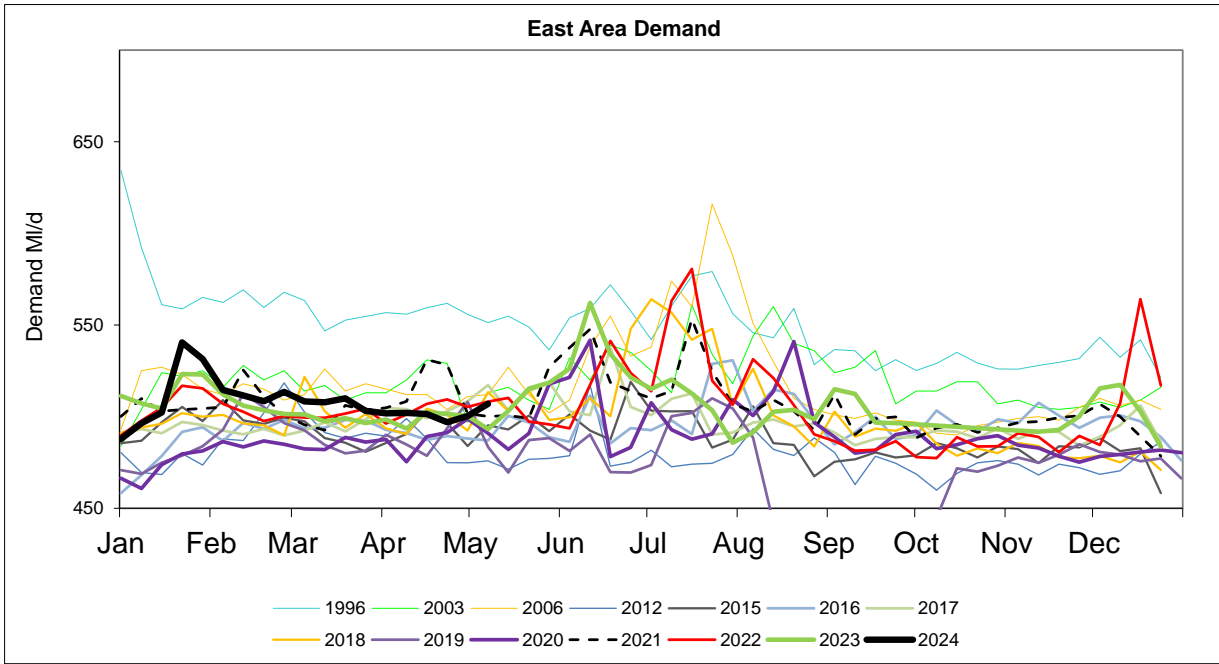
Week Ending Wednesday	L E E D S	W A K E + R F I E L D	S E L B Y	H A R R O G A T E	H U L L	M A L L T O N	S H E F F / B L Y	D O N C A S T E R	B R A D F O R D	C A L D E R	S K I P T O N	Y O R K A	R E G I O N
27/03/2024	169	78	41	78	157	53	282	81	140	150	38	46	1314
03/04/2024	164	77	40	77	159	56	268	80	137	148	38	47	1290
10/04/2024	165	73	40	76	159	54	272	79	140	151	38	48	1295
17/04/2024	166	76	41	76	157	53	271	80	141	148	38	49	1295
24/04/2024	166	76	42	77	153	52	272	80	140	150	37	49	1294

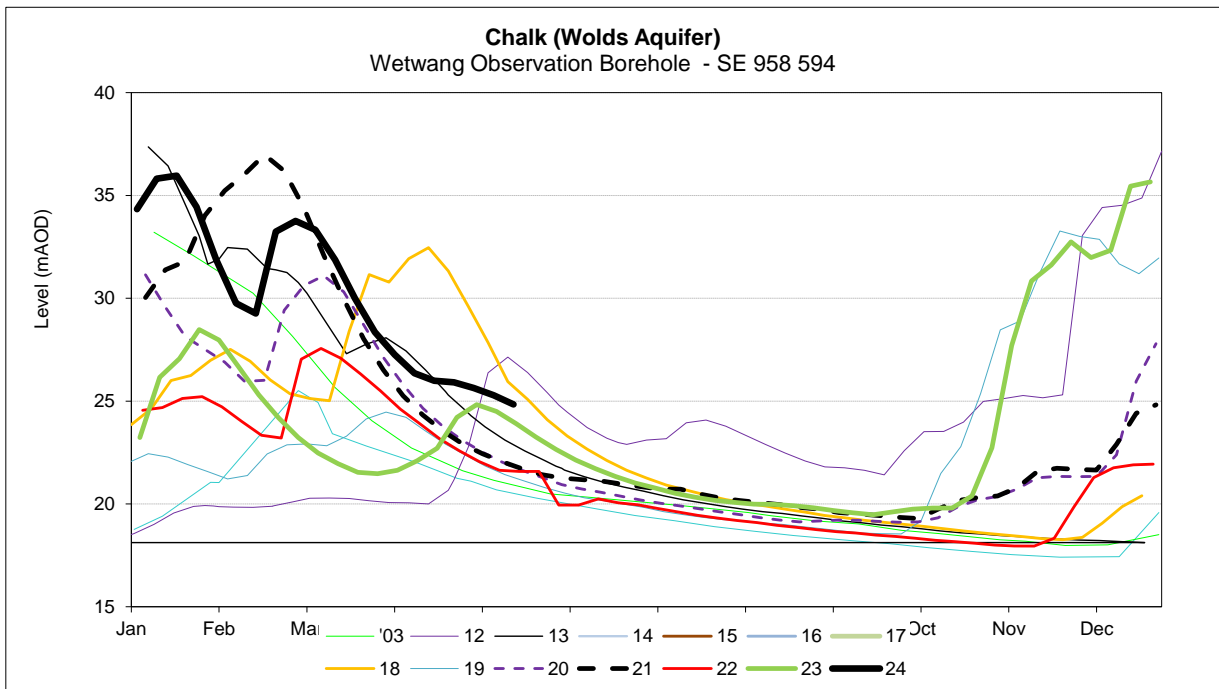
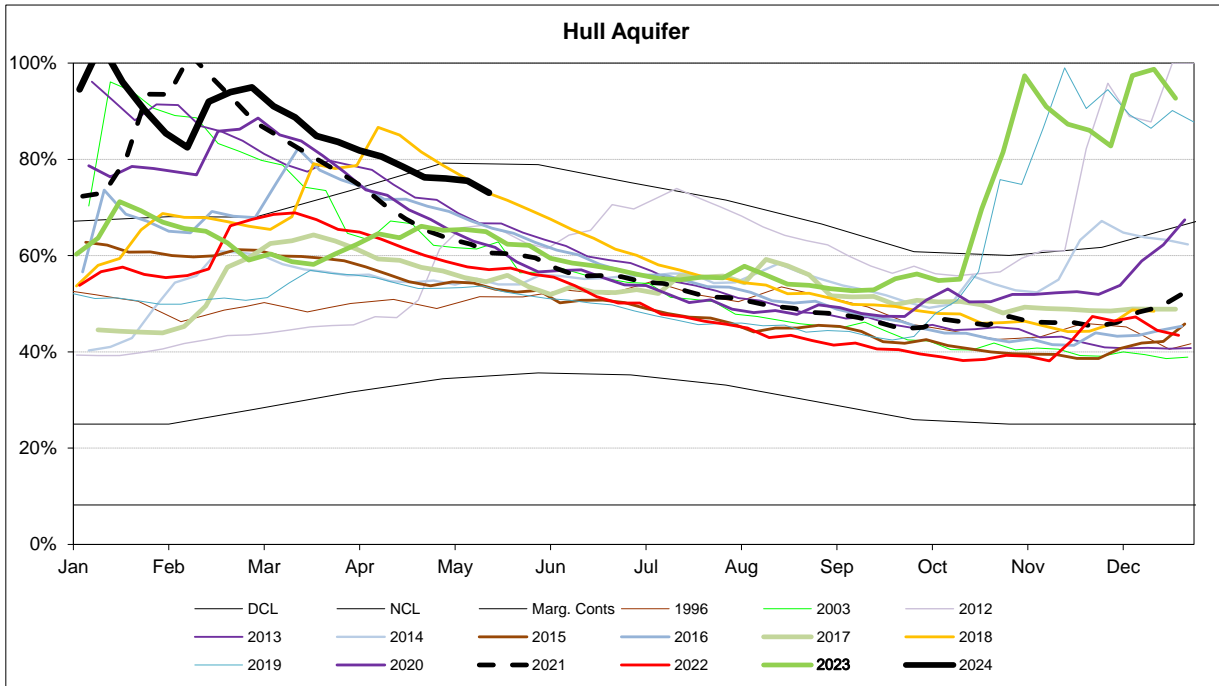
MONTHLY DEMANDS FROM WIS REPORT

Mar-24	168	66	41	73	159	50	285	70	145	149	37	47	1289
Apr-24	163	65	40	73	158	51	279	69	143	146	36	47	1270

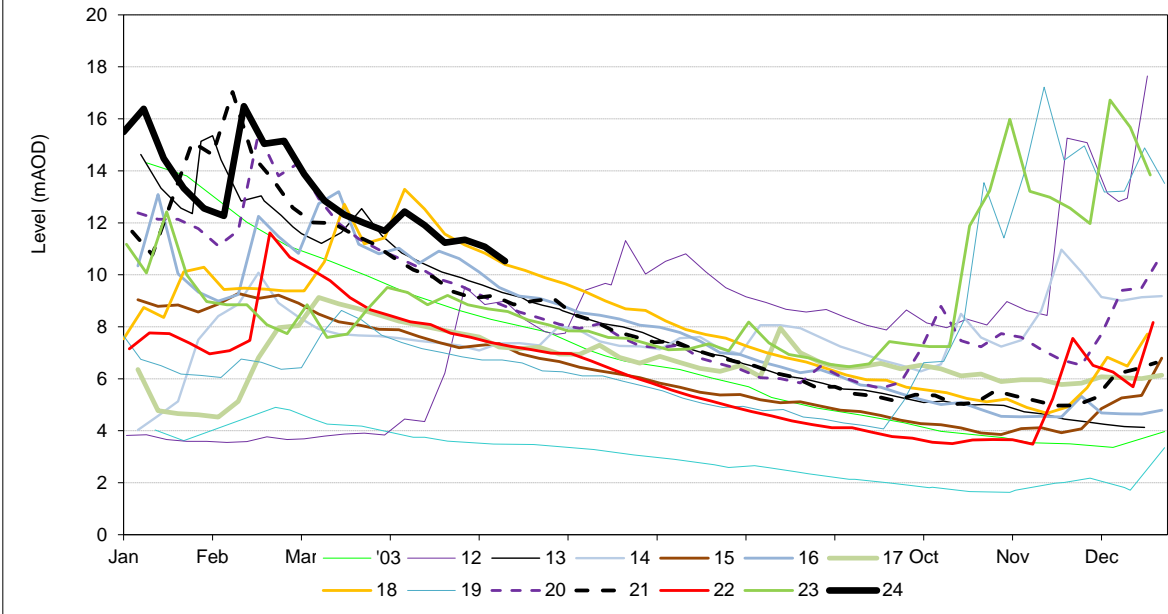
NB Current month demands include some estimates for minor sources and are not exactly comparable with previous months' figures.



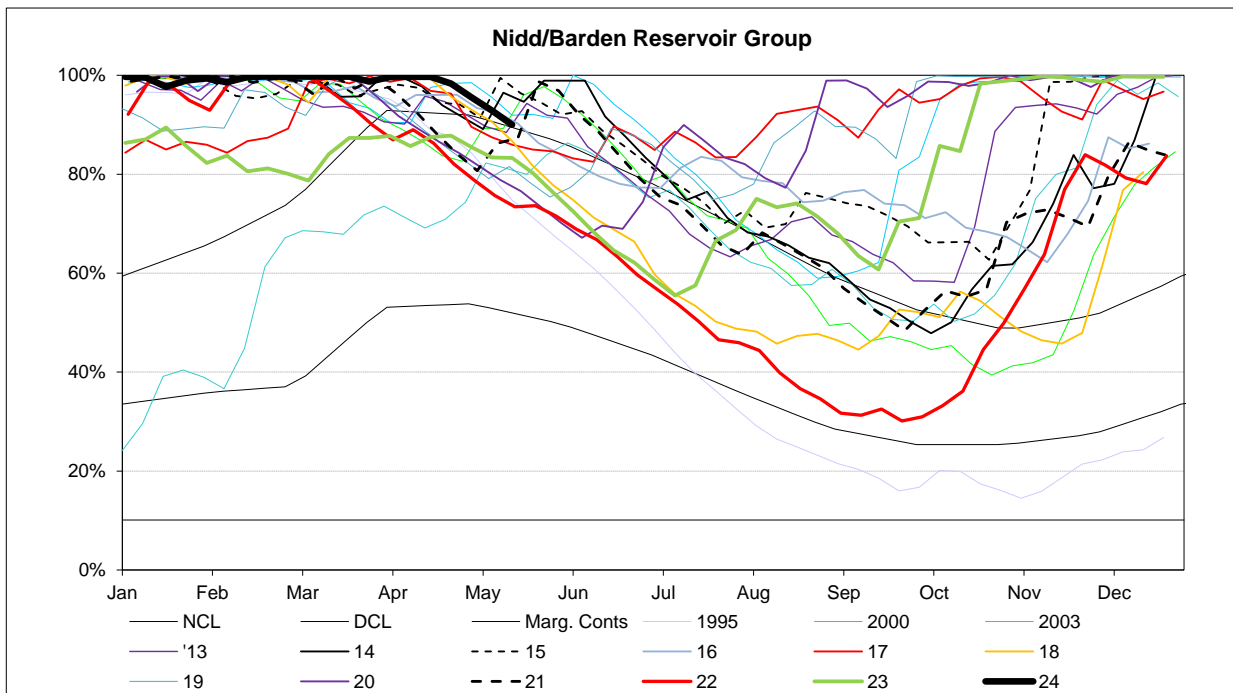
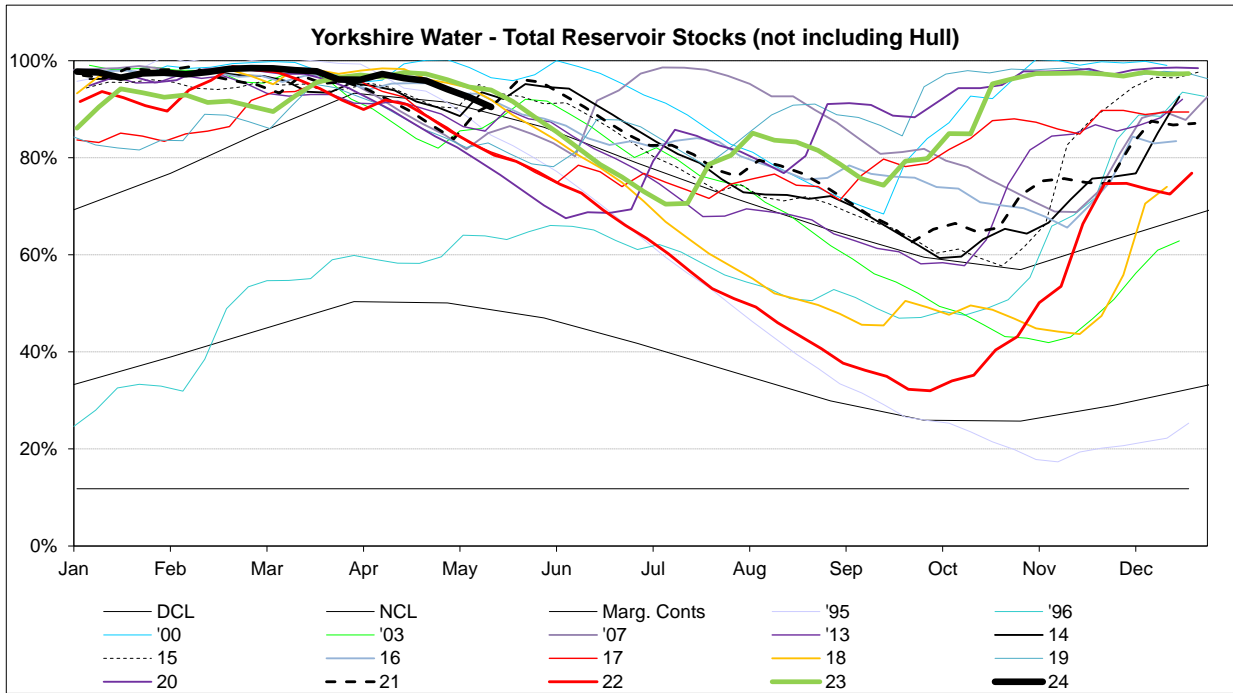


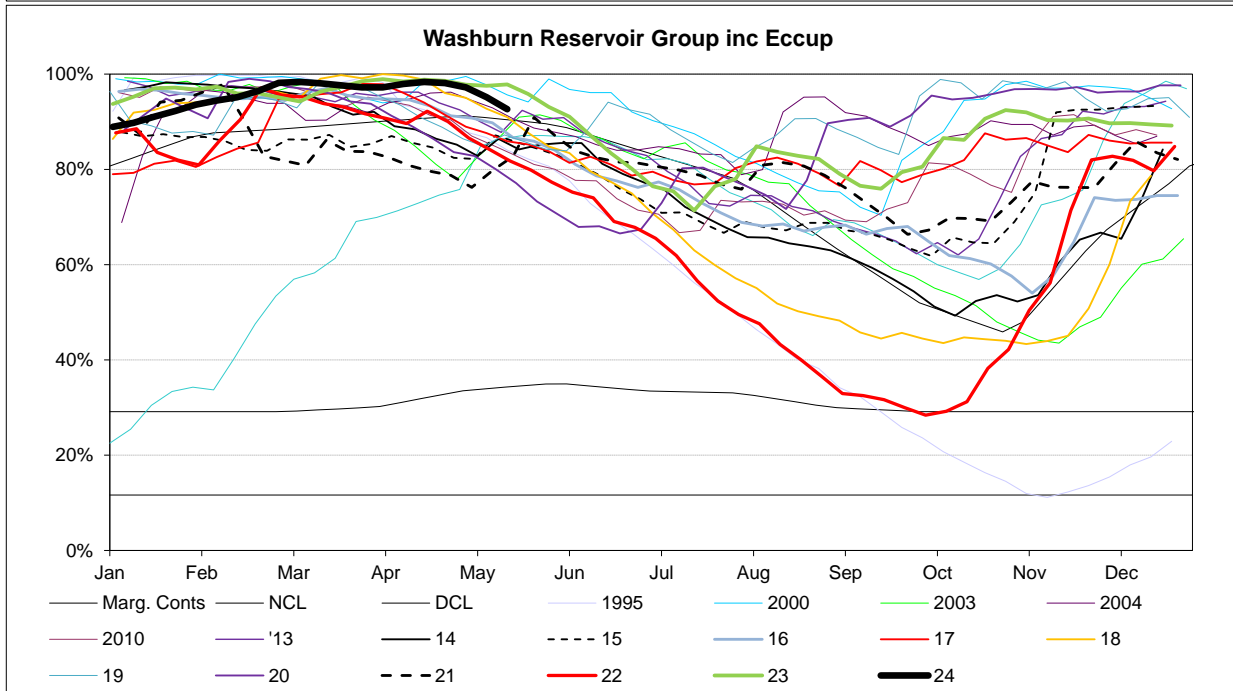
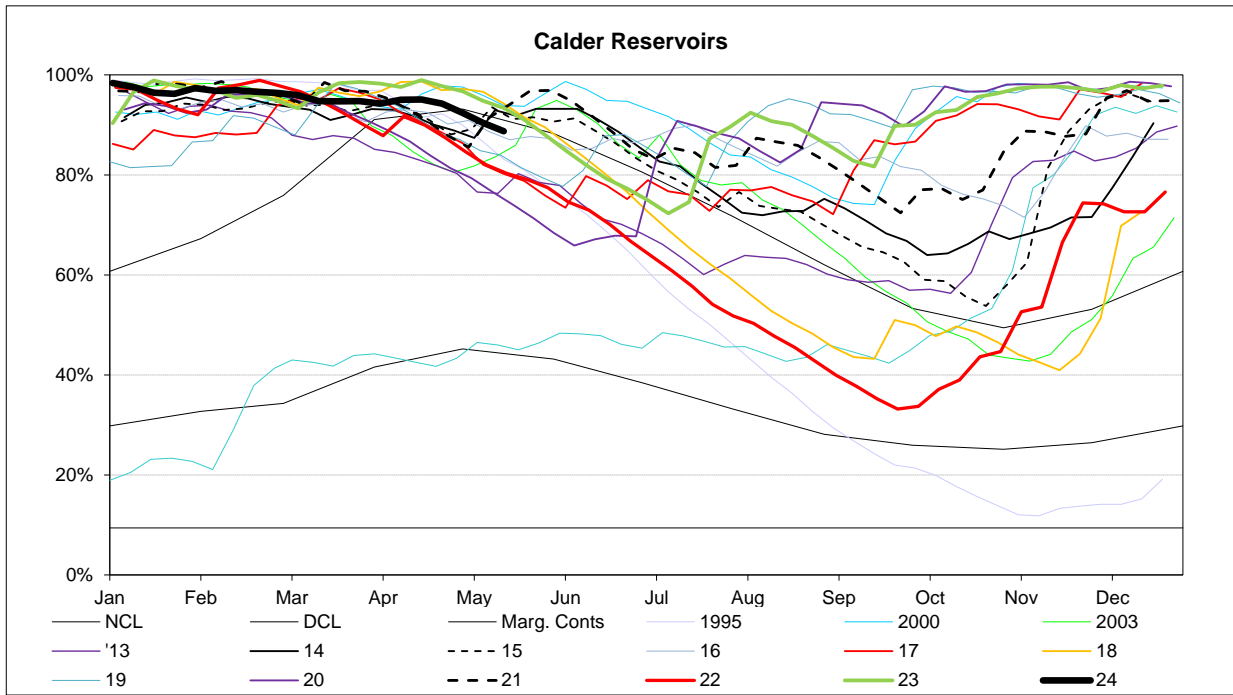


Chalk (Hull Aquifer)
Westwood Observation Borehole - TA 020 399

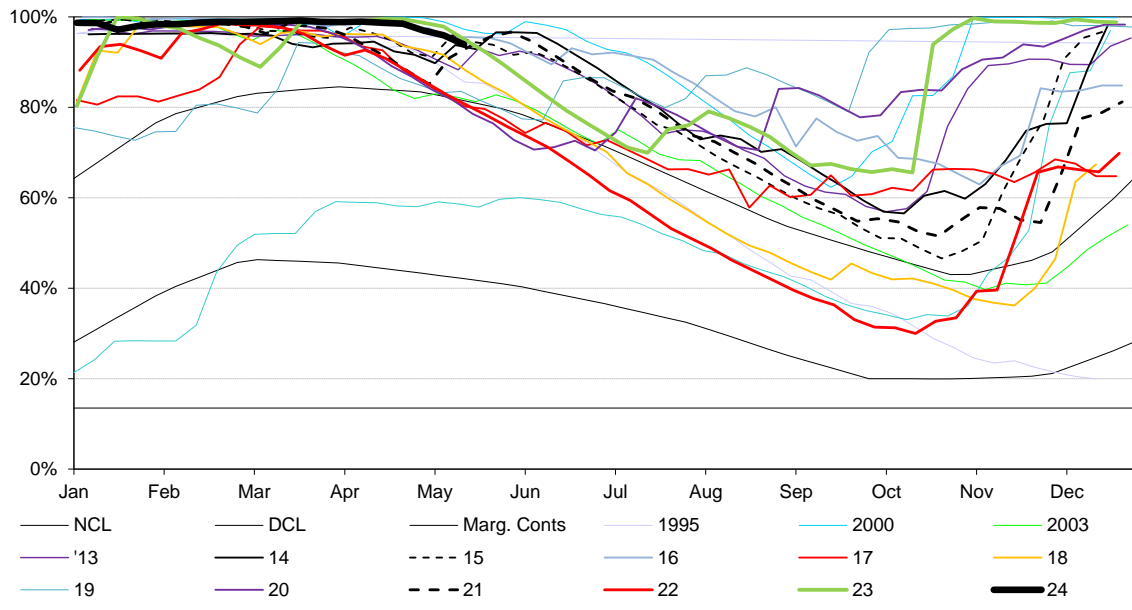


RESERVOIR STOCKS	13/05/2024		% Change	Planned Reservoir Safety Work Reason for Drawdown	Required Drawdown & Duration	
Reservoir Group	% Stocks @	% Change	last week			
Calderdale (excl Withens Clough)	75.8%	-1.5%	-2.8%	Access for Tunnel Grouting at Upper IRE Access for Tunnel Grouting at Middle IRE Increase Drawdown Capacity Increase Drawdown Capacity	Apr 24 - Oct 24 Apr 24 - Oct 24 Feb 24 - May 24 June 24 - Oct 24	87.0% 28.0% 62.0% 21.0%
Boothwood/Ryburn (incl WC)	93.4%	-1.2%	-1.7%			
(Gorpley)	72.4%	-1.0%	0.5%			
Huddersfield	92.6%	-1.7%	-1.8%			
Brownhill/Digley	93.5%	-2.9%	-2.1%			
Walshaw Dean Middle	92.0%	11.2%	0.4%			
Walshaw Dean Lower	32.7%	-2.1%	-4.9%			
Widdop	28.5%	-8.1%	-7.8%			
Widdop	28.5%	-8.1%	-7.8%			
Calder Area Total	88.7%	-1.6%	-2.1%			
Nidd/Barden/Chelker	90.0%	-2.9%	-2.7%	Embankment Stability Works Drawdown Improvements Pipework modifications Inspection Vegetation Removal Pointing Repair Ground Anchor	Jan 23 - Dec 24 May 23 - June 24 May 24 - June 24 May 24 - June 24 TBC TBC TBC	86.0% 53.0% 72.0% 92.0% 92.0% 78.0% 87.6%
Grimwith	93.0%	-2.5%	-2.2%			
Worth Valley	97.5%	1.8%	-2.5%			
March Ghyll	86.5%	1.5%	1.8%			
Gouthwaite	46.9%	1.8%	2.1%			
Eislack	60.6%	-2.8%	0.3%			
Hewenden	87.6%	-6.3%	-6.1%			
Thornton Moor	100.0%	0.5%	1.3%			
Chelker	94.0%	-1.6%	2.5%			
Ponden	100.0%	0.0%	0.0%			
North West Area Total	92.2%	-2.3%	-2.2%			
Washburn/Eccup Resrs.	92.7%	-2.5%	-2.1%	Outlet Channel Repairs Bridge Repairs	Dates tbc Dates tbc	93.0% TBC
Thornton Steward	97.1%	0.0%	0.7%			
Leighton/Roundhill	95.9%	-2.5%	-1.7%			
Haverah Park	95.3%	-2.6%	14.4%			
Swinsty	79.4%	-5.7%	-6.2%			
Thruscross	100.0%	0.0%	0.0%			
North Area Total	93.2%	-2.4%	-0.4%			
Don Valley & Winscar	93.8%	-2.1%	-0.3%	Damage to Overflow Channel Damage to Overflow Channel Install Overflow Debris Barrier Overflow Investigation	Nov 23 - Aug 24 Nov 23 - Aug 24 June 24 - Aug 24 Dates tbc	98.0% 89.0% 95.0% 95.0%
Rivelin Valley	93.8%	-4.8%	-1.4%			
Little Don	90.6%	-3.2%	-3.3%			
Ewden Valley	92.3%	-4.8%	-1.7%			
Loxley Valley	97.7%	-1.2%	-1.1%			
Redmires	83.8%	-1.1%	0.3%			
Redmires Upper	91.3%	0.0%	-0.3%			
Redmires Middle	68.4%	2.9%	2.7%			
Broomhead	92.3%	-4.8%	-1.7%			
Strines	100.0%	0.0%	0.0%			
South Area Total	92.5%	-2.5%	-1.3%			
Tophill Low	0.0%	-0.1%	-3.2%			
Hull Aquifer	73.1%	-2.5%	-0.5%			
East Area Total	74.0%	-2.3%	-0.7%			
Regional Total (DCP) (inc East Area)	89.5%	-2.2%	-1.7%			
YORKSHIRE TOTAL (Supply) (not inc East Area)	91.6%	-2.2%	-1.9%			





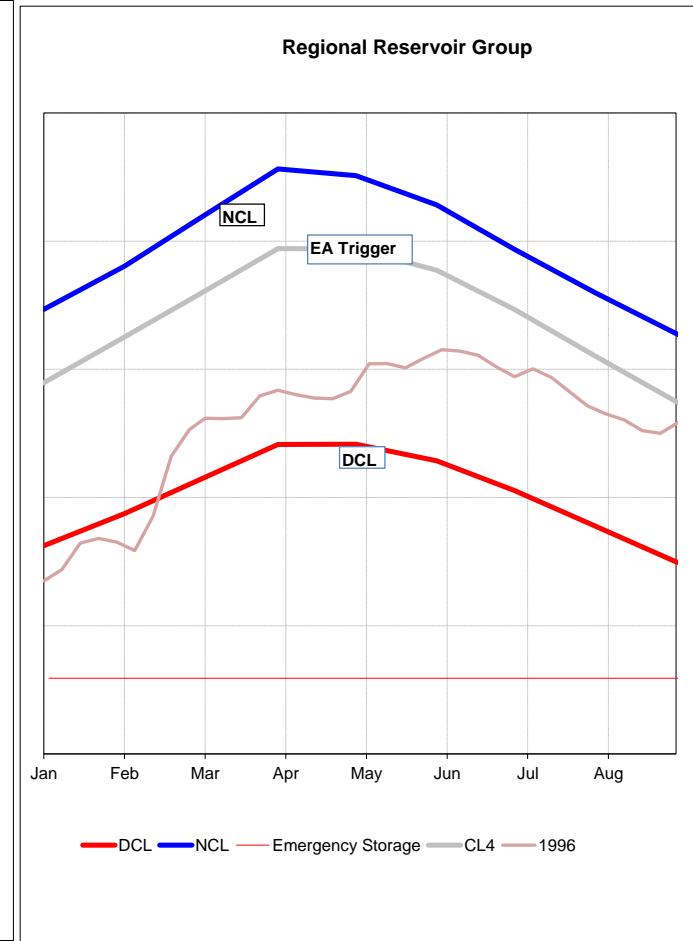
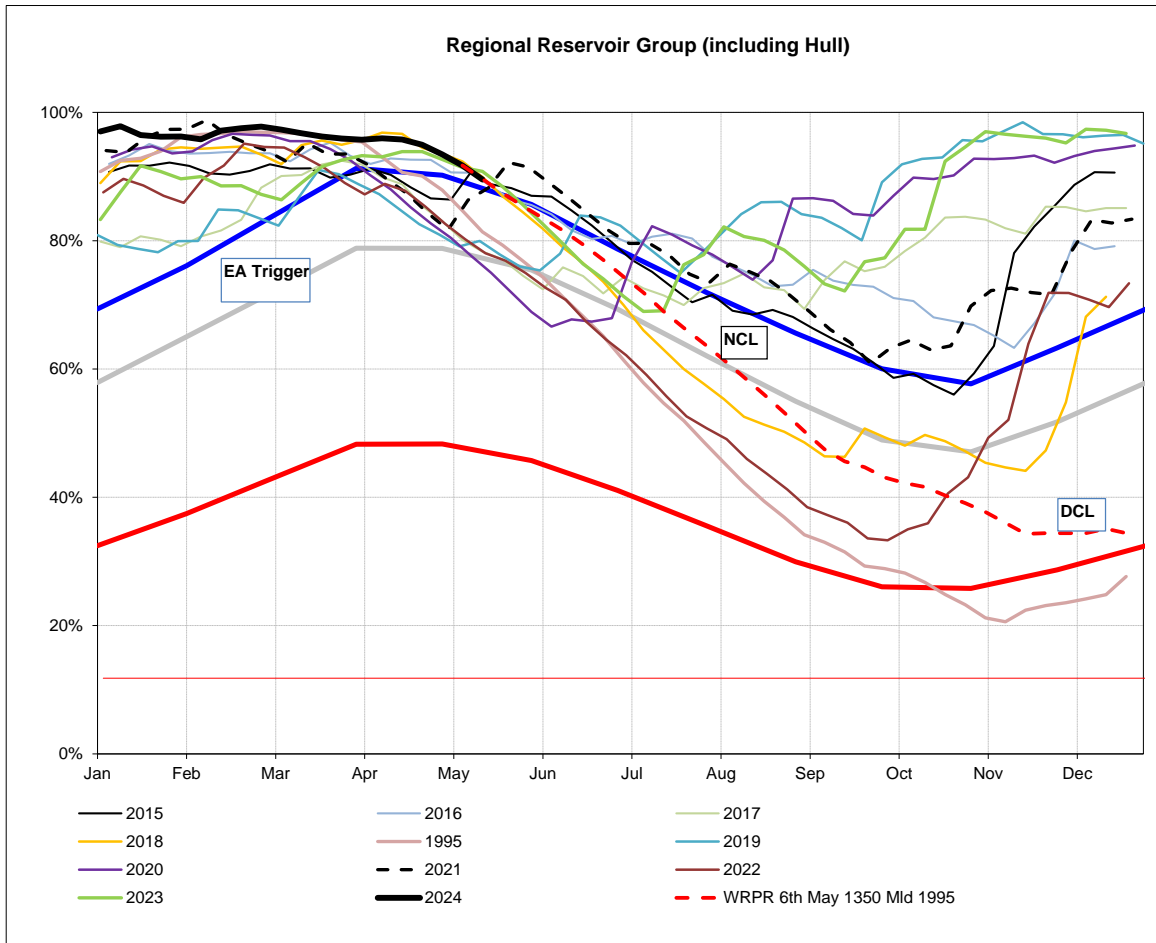
Sheffield & Barnsley Reservoirs



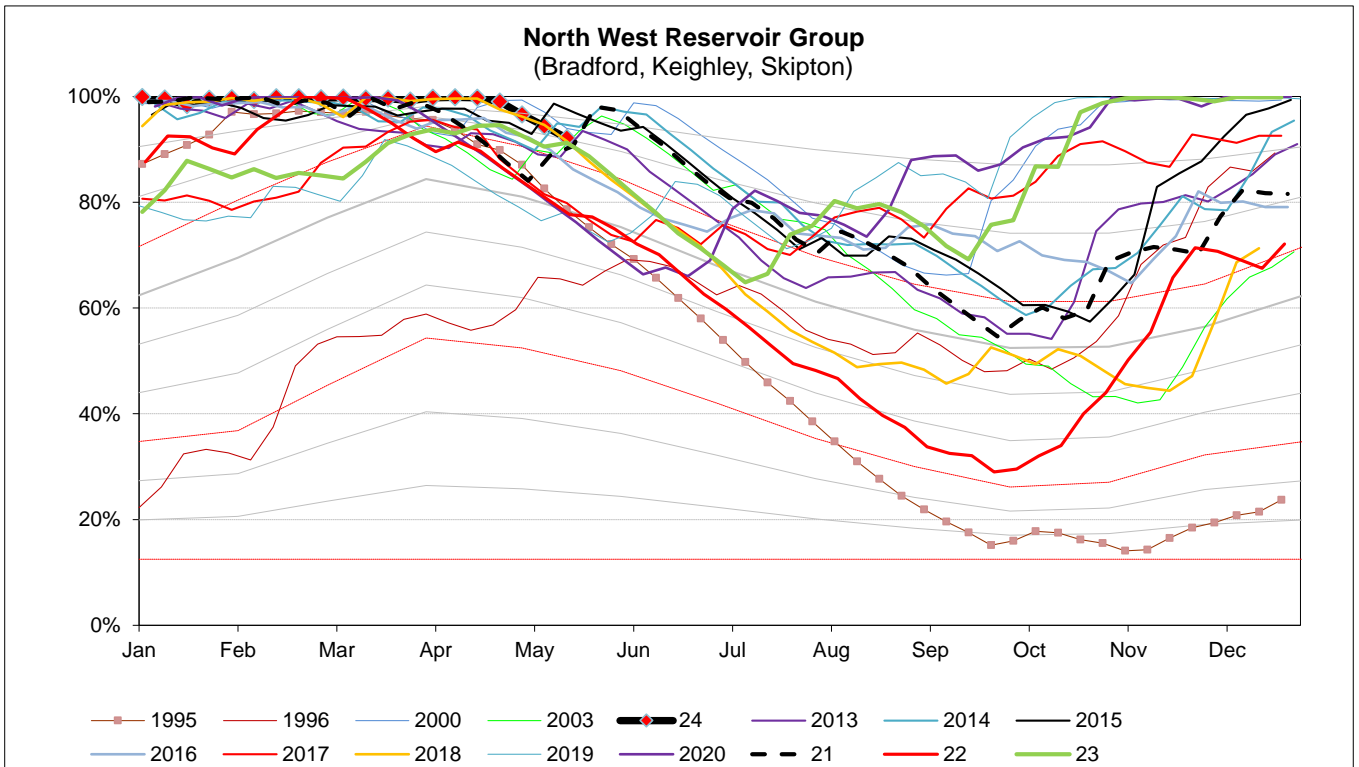
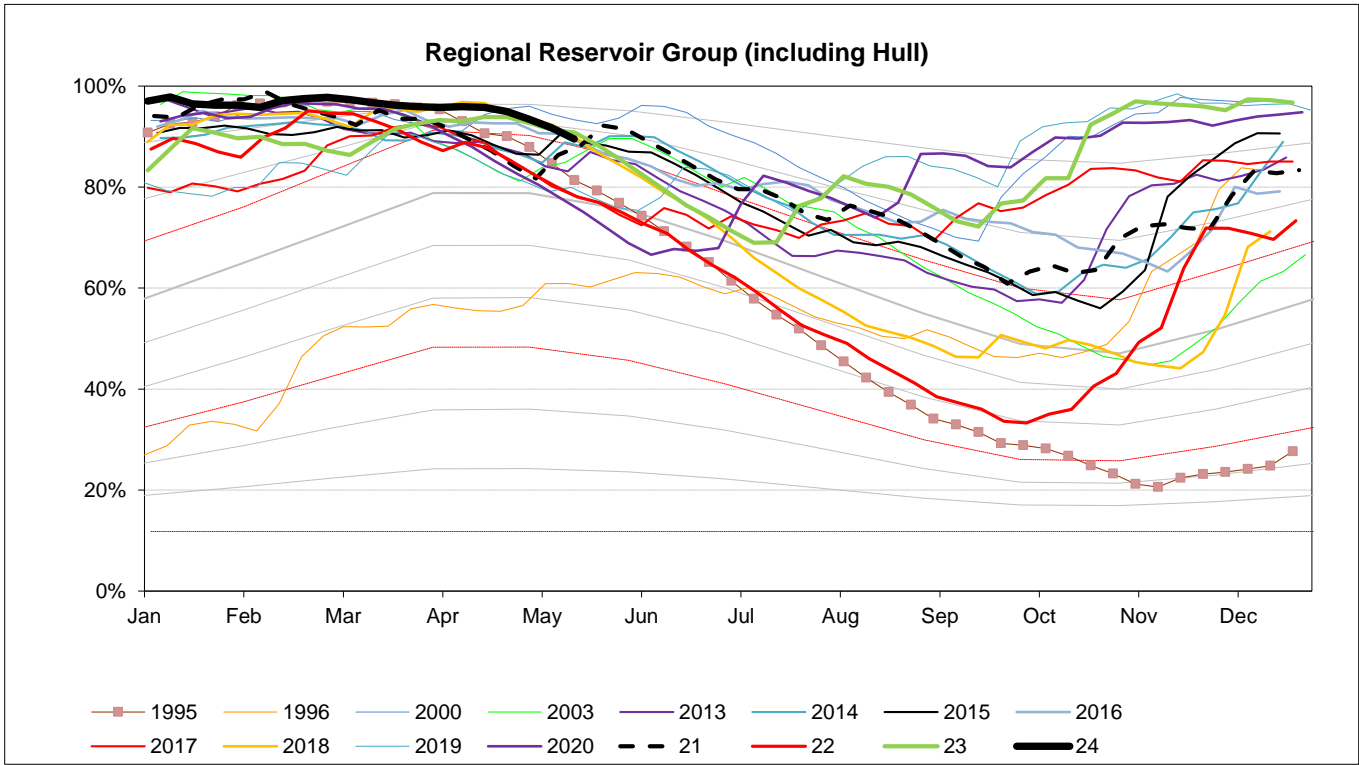
EA STOCKS REPORT

29 April 2024

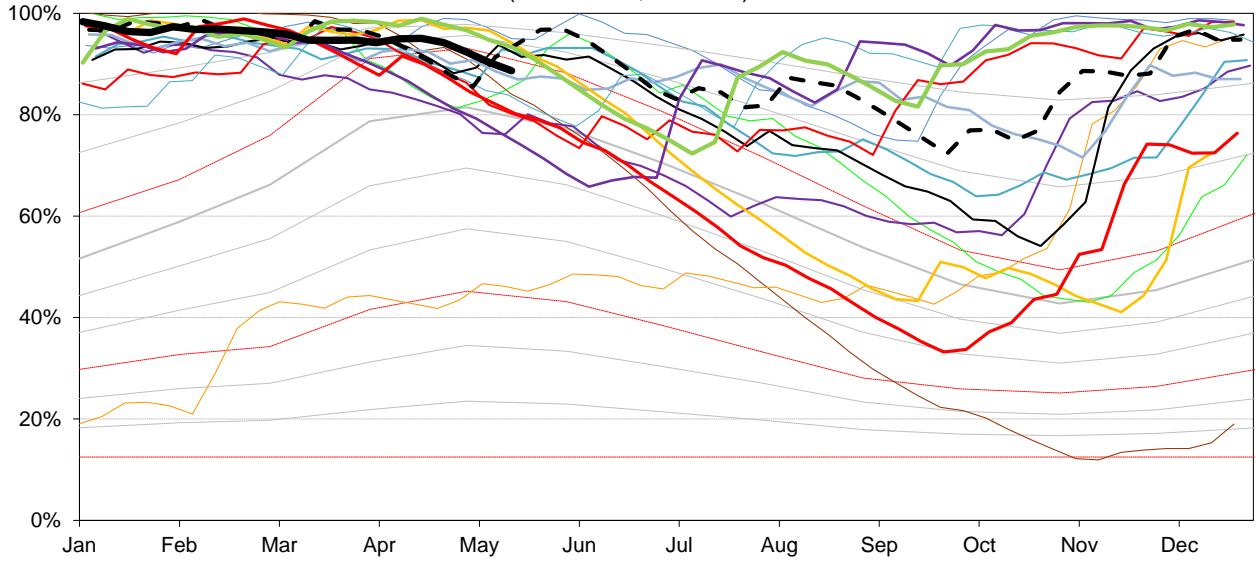
EA Stocks Report	13/05/2024						
	MI	%	% change		MI	%	% change
South West Area Supply Reservoirs				South Area Supply Reservoirs			
Calderdale Group	8443	75.8%	-1.5%	Don Valley	1950	93.7%	-0.2%
Huddersfield Group	13074	92.6%	-1.7%	Little Don	6677	90.6%	-3.2%
Brownhill/Digley excl Holmestyes	5243	93.4%	-3.0%	Ewden Valley	4556	92.3%	-4.8%
Boothwood/Ryburn	10916	93.3%	-1.0%	Loxley Valley	6718	97.7%	-1.2%
				Rivelin	765	93.8%	-4.8%
South West Reservoir Group	39059	88.7%	-1.6%	Redmires	2329	83.8%	-1.1%
Bradford Area Supply Reservoirs				South Reservoir Group	22994	92.5%	-2.5%
Gouthwaite	2727	46.9%	1.8%	Winscar Group	8813	94%	-2.6%
Grimwith	20242	93.0%	-2.5%				
Nidd/Barden/Chelker	17260	90.0%	-2.9%	Compensation Reservoirs			
Rombalds/Thornton Group	2078	93.1%	-1.8%	Scout Dike	655	94.4%	-2.7%
				Underbank	2819	98.3%	-0.3%
Skipton Area Supply Reservoirs				Morehall	2074	95.5%	-1.1%
Embsay	695	96.2%	2.4%	Damflask	4971	97.4%	-2.6%
Worth Valley Group	3228	97.5%	1.8%				
North West Reservoir Group	43503	92.2%	-2.3%	North Area Supply Reservoirs			
				Washburn	21656	92.7%	-2.5%
Compensation inc Silsden	2210	93.9%	-1.4%	Eccup	6268	89.4%	-4.2%
Gouthwaite	2727	46.9%	1.8%	Leighton/Roundhill	7096	95.9%	-2.5%
March Ghyll & Elslack Reservoirs excluded for consistency with stocks predictions in WRAPSIM				Haverah Park	955	95.3%	-2.6%
				Lumley Moor	359	94.0%	-3.0%
				Thornton Steward	921	97.1%	0.0%
East Area Supply Reservoirs							
Tophill Low	1417	84.2%	-0.1%	North Reservoir Group	30986	93.2%	-2.4%
Hull Aquifer	13881	73.1%	-2.5%				
				Lindley Wood Compensation	2642	90.5%	-3.9%
East Reservoir Group	15298	74.0%	-2.3%				
				Regional Reservoir Group	160653	89.5%	-2.2%
				(sum of South West, North West, East, South, North & Winscar Reservoirs)			



Triggers	
EA early warning (CL4)	Water resources to advise EA on production
Hosepipe Restrictions	When projected falling stocks fall below DCL
Drought Orders	When stocks are below DCL.

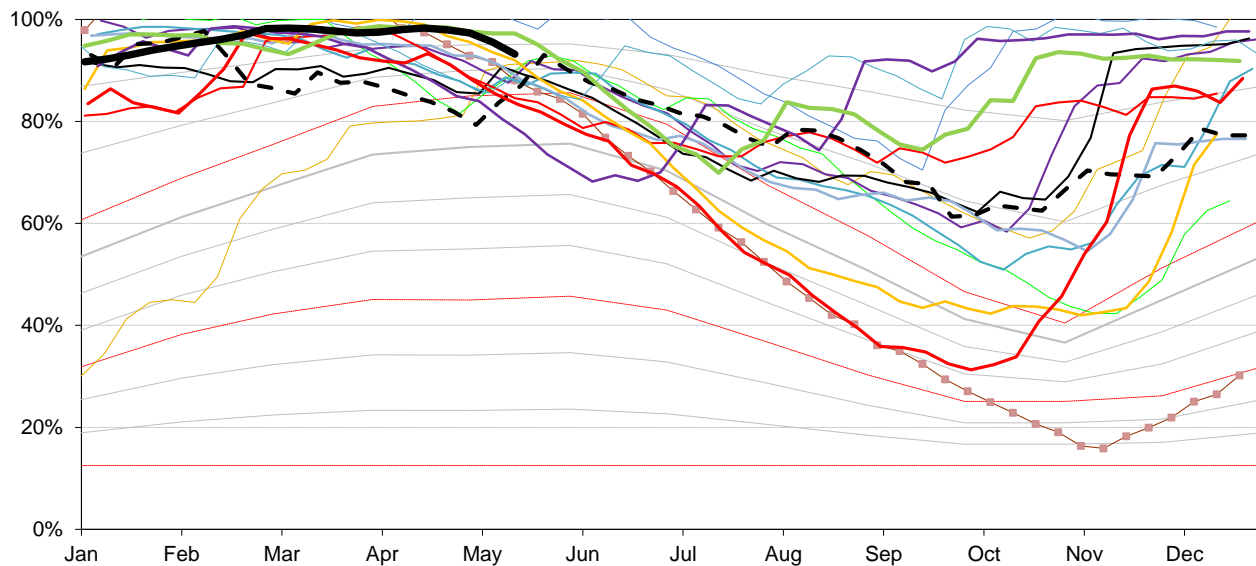


South West Reservoir Group (Calderdale, Kirklees)



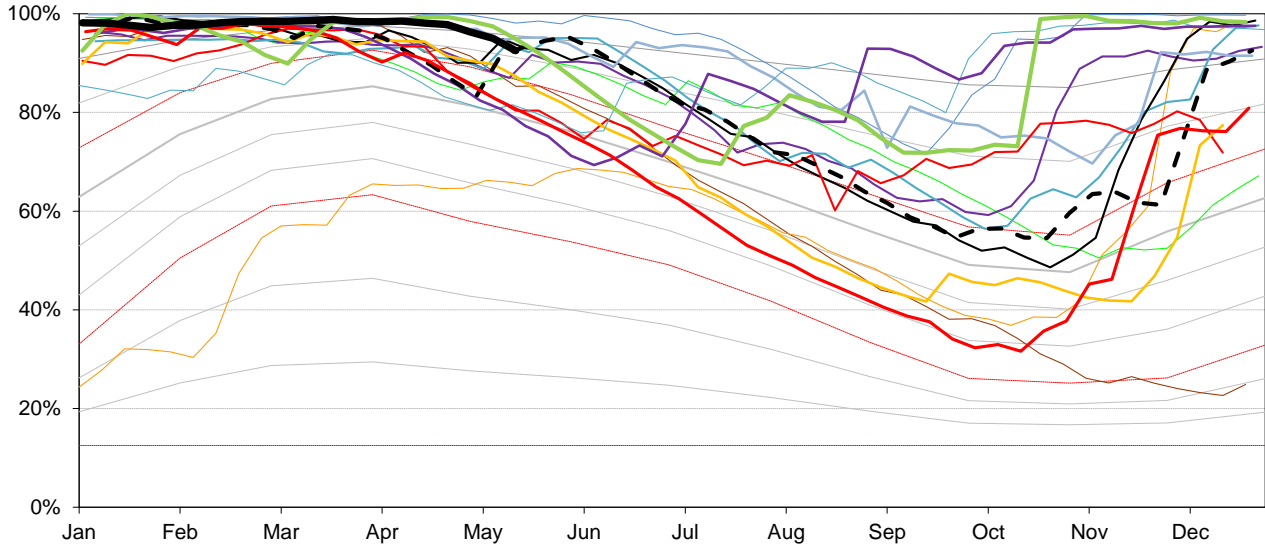
1995 1996 2003 2000 2013 2014 2015 2016
 2017 2018 2019 2020 21 22 23 24

North Reservoir Group (Leeds, Harrogate)



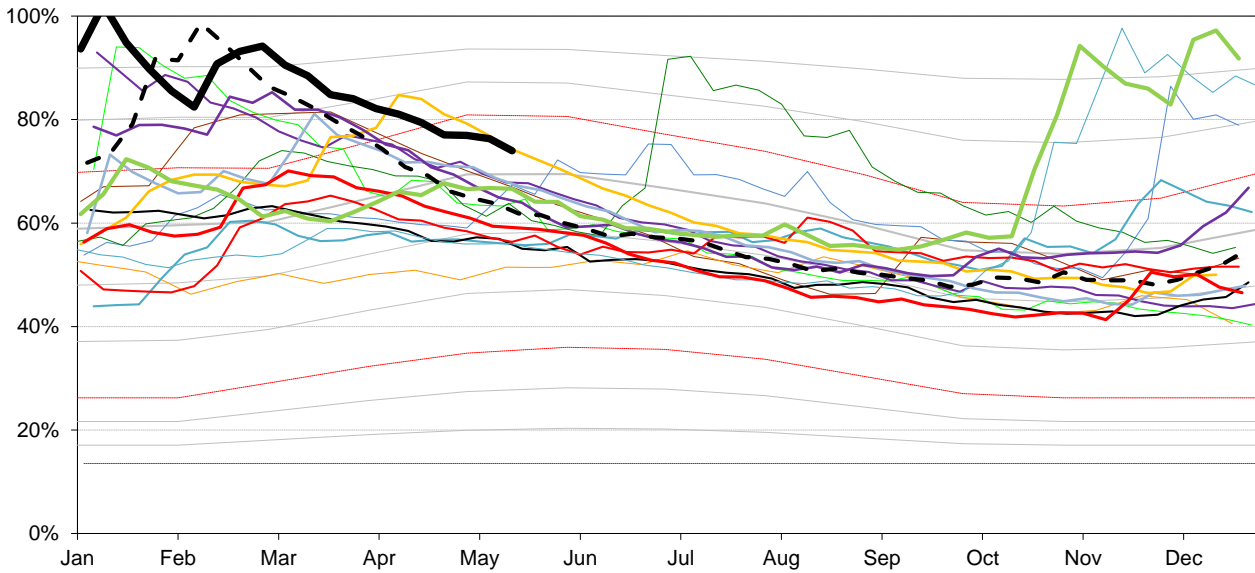
1995 1996 2000 2003 2013 2014 2015 2016
 2017 2018 2019 2020 21 22 23 24

South Reservoir Group
(Sheffield, Barnsley)

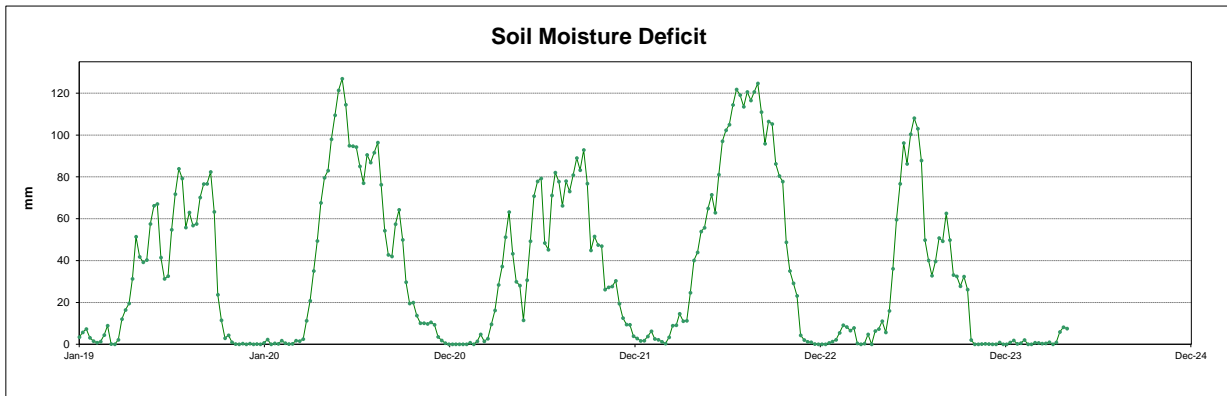
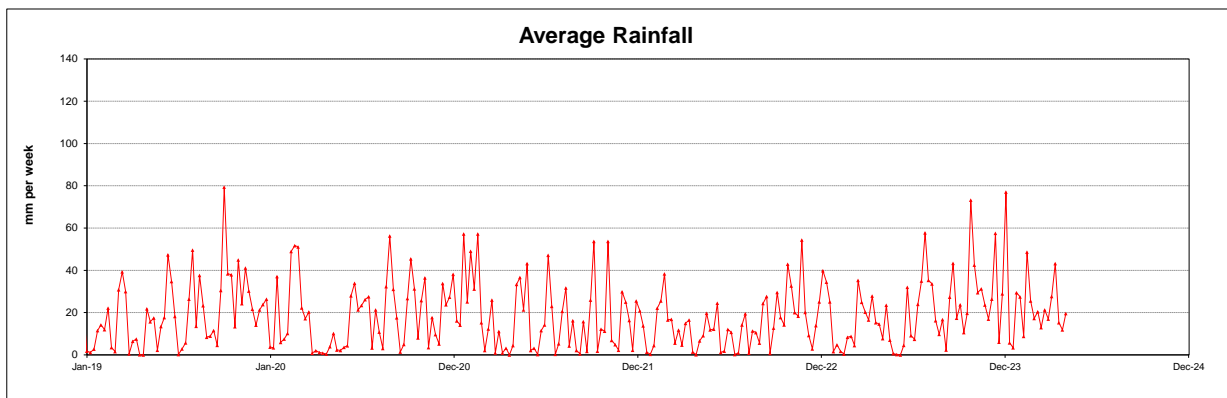
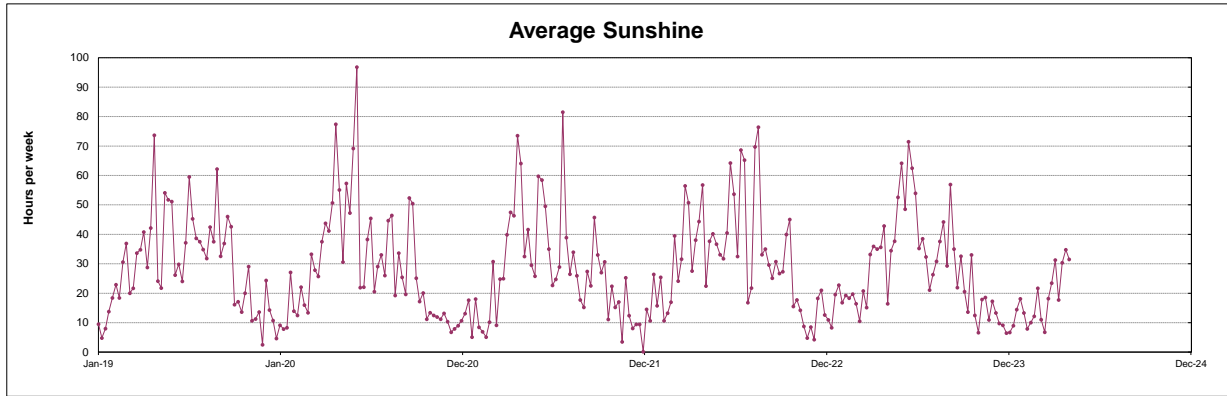


— 1995 — 1996 — 2000 — 2003 — 2013 — 2014 — 2015 — 2016
 — 2017 — 2018 — 2019 — 2020 - - 21 — 22 — 23 — 24

East Reservoir Group
(Hull Aquifer, Tophill Low)



— 1995 — 1996 — 2000 — 2003 — 2013 — 2014 — 2015 — 2016
 — 2017 — 2018 — 2019 — 2020 - - 21 — 22 — 23 — 24



This page will normally be updated monthly (approx mid month).

This data may be subject to change following routine validation checks.

Where showing a negative value, this is normal at certain sources, due to the imports of water into that source being greater than the volumes abstracted.

Annual licences run from April to March.

Units in MI

Serial No	Source	Last calendar month MI	Run date		
			Year to date MI	Annual Limit	% of Annual Limit
02/27/023/332	Ainderby Steeple Boreholes	131	1470	1760	84%
03/28/083/010	Armthorpe Boreholes	238	2569	3319	77%
03/28/083/012	Austerfield Boreholes	249	3520	11615	30%
02/27/022/020	Aysgarth & Newbiggin Springs	13	173	341	51%
02/27/012/035	Baitings, Ryburn & Blackhouse reservoirs	459	4950	20457	24%
02/27/023/032	Bellerby Borehole and springs near Bellerby	72	856	1250	68%
02/27/022/209	Birk Gill & River Burn	617	4163	6400	65%
02/27/012/254	Boothwood Reservoir & associated catchwaters	307	2936	20457	14%
02/27/10/112	Boshaw Whams Reservoir	0	0	55	0%
03/28/083/105	Boston Park Boreholes	188	2287	3318	69%
02/27/024/305	Brayton Barff Boreholes	0	0	2250	0%
02/26/030/002	Bridlington	147	1689	2500	68%
02/27/005/031	Broomhead Reservoir	1050	11717	12410	94%
02/26/030/004	Burton Agnes	79	904	1000	90%
02/27/018/080	Carlton Hanger Lane Boreholes	266	2842	3500	81%
02/27/018/079	Carlton Mill Lane Boreholes	162	1865	3800	49%
02/27/019/009	Carr Bottom Reservoir, Burley Woodhead	0	80	409	20%
02/27/023/340	Catterick Boreholes	211	2486	2920	85%
02/27/027/136	Cayton Carr Lane Boreholes	165	1872	3928	48%
02/27/027/163	Cayton Station Road Borehole	36	563	2646	21%
02/27/019/137	Chelker Reservoir	331	3641	5000	73%
02/27/023/031	Coalsgarth Springs	3	52	750	7%
02/27/011/064	Colne Valley Catchwaters	123	2126	5840	36%
02/26/032/126	Cottingham Well	619	7441	18184	41%
02/27/018/081	Cowick Boreholes	372	4340	5250	83%
02/27/023/046	Cranehow & Downholme Springs	0	0	318	0%
02/27/023/030	Crumma, Newsham & Gandale Springs	74	972	1364	71%
02/27/005/030	Dale Dyke & Agden Reservoirs	873	10587	12410	85%
02/27/012/261	Dean Head & Scammonden	61	1047	3650	29%
02/27/19/121	Dib Spring, Hawkswick	0	0	27	0%
02/26/032/126	Dunswell Well	466	8377	16593	50%
NE/27/025/021	East Ness Boreholes	285	3342	5680	59%
02/26/031/087	Elmswell Wold Borehole	0	133	1273	10%
02/27/015/045	Embsay Reservoir	273	2141	1846	116%
02/27/016/196	Esholt Sewage Treatment Works	0	0	88	0%
02/26/032/124	Etton Boreholes	113	1748	5100	34%
03/28/083/012	Finningley Boreholes	326	3465	6780	51%
02/27/022/328	Fossdale (High Shaw) Springs	8	114	227	50%
02/27/018/120	Goosehouse Boreholes	267	3332	3500	95%
02/27/012/043	Gorpley Reservoir	0	0	1823	0%
02/27/016/022	Graincliffe Reservoir & Morton Springs	271	2129	2728	78%
02/27/012/037	Green Withens Ringstone Res & catchwater	508	5070	20457	25%
02/27/019/051	Greenhow Tunnel (Nidd Aqueduct) Dale Head Intake	0	0	214	0%
02/27/019/052	Greenhow Tunnel (Nidd Aqueduct) No.2 Access Shaft	0	0	6819	0%
NE/27/019/005	Grimwith Reservoir to Nidd Aqueduct	341	1466	3650	40%
02/26/030/003	Haisthorpe Boreholes	360	4496	5000	90%
03/28/083/012	Hatfield Boreholes	122	1877	3319	57%
03/28/083/100	Hatfield Woodhouse Boreholes	0	0	3320	0%
02/27/029/010	Hazel Head Springs	52	521	1162	45%
02/27/012/041	Hebden, Luddenden & Hebble Valley Resrs	1171	12832	15695	82%
02/27/018/077	Heck Boreholes	80	1258	2489	51%
03/28/083/012	Highfield Lane Boreholes	371	4619	11615	40%
02/27/023/685	Hollin Hill Borehole	0	13	45	30%
02/27/010/063	Holmestyes & Digley Reservoirs	286	3573	5840	61%
02/27/22/024	Horsehouse Spring, leyburn	0	0	33	0%
02/27/027/002	Howe Hill Well	79	907	1014	89%
02/26/031/006	Hutton Cranswick	41	489	796	61%
02/27/005/012	Ingbirchworth Reservoir & Annat Royd Intake	211	1593	3637	44%
02/27/005/202	Ingbirchworth South Borehole	4	51	132	38%
02/27/027/058	Irton	438	5280	8215	64%
02/27/21/015	John O'Gaunts and Beaverdyke Reservoirs	0	0	1909	0%
02/27/014/010	Keighley Moor Reservoir	59	528	6951	8%
02/27/025/128	Keld Head Boreholes	163	1987	3319	60%
02/26/032/126	Keldgate Boreholes	135	1639	5819	28%
02/26/031/002	Kilham	33	211	1818	12%
02/27/005/032	Langsett Reservoir	1018	12627	17155	74%
02/27/022/210	Leighton Reservoir & Spruce Gill stream intake	366	6638	13184	50%
03/28/083/107	Littleworth Borehole	0	0	1659	0%
02/27/028/270	Loftsome Bridge ASR Borehole No.1	0	0	750	0%
02/27/014/009	Lower Laithe Reservoir	283	2640	6951	38%
02/27/005/011	Midhope Reservoir & Knoll Brook Intake	347	3348	17155	20%
02/26/034/006	North Newbald	0	0	1137	0%
03/28/083/012	Nutwell Boreholes	261	2944	4983	59%
02/27/019/006	Panorama, Hilltop & Old Reservoirs & Springs	12	102	1000	10%
02/27/018/078	Pollington Boreholes	210	2900	5000	58%
02/27/014/058	Ponden Reservoir	15	751	6951	11%
02/27/016/023	Reva Reservoir, Hawkesworth	201	1179	1364	86%
02/27/005/029	Rivelin and Redmires Reservoirs	82	2661	8030	33%

02/27/028/017	River Derwent at Elvington	4024	50822	75000	68%
02/27/028/083	River Derwent at Loftsom Bridge	2021	26731	30400	88%
02/27/029/012	River Esk	249	3115	7823	40%
02/26/031/047	River Hull & West Beck	1210	16787	25000	67%
02/26/032/194	River Hull for Sewer Cleaning	0	0	91	0%
02/27/024/078	River Ouse at Acomb	808	9717	35000	28%
02/27/024/158	River Ouse at Moor Monkton	2669	30185	73000	41%
02/27/022/214	River Ure at Kilgram Bridge	207	3482	15000	23%
02/27/020/196	River Wharfe at Arthington	4	2941	19009	15%
02/27/019/129	River Wharfe at Lobwood	1266	18712	23742	79%
03/28/083/012	Rossington Bridge Boreholes	0	0	5172	0%
02/27/022/027	Roundhill and Lumley Moor Reservoirs	2	8	3500	0%
02/27/005/013	Royd Moor Reservoir & Intakes	106	1272	2955	43%
02/27/021/016	Scargill Reservoir	61	754	1932	39%
02/27/021/092	Scarhouse & Angram Resvrs with tunnel & catchwater	3327	36218	38164	95%
02/27/15/149	Silsden Beck, Stilling-Basin at foot of Silsden Reservoir Embankment	0	0	10	0%
02/26/032/126	Springhead Well	928	8633	13638	63%
02/27/022/021	Stalling Busk & Marssett Springs	0	0	33	0%
02/27/022/208	Stock Beck, Carlesmoor Beck & River Laver	0	628	3500	18%
02/27/023/684	Stubbing Nook Borehole	0	52	135	39%
03/28/083/012	Thornham Boreholes	308	3495	6213	56%
02/27/016/160	Thornton Moor & Stubden Reservoirs	5	1087	6214	17%
02/27/012/038	Turvin Clough	0	483	4014	12%
02/27/019/054	Upper & Lower Barden Reservoirs	446	4744	14223	33%
02/27/020/088	Washburn Valley Reservoirs	2661	30803	43800	70%
02/27/015/041	Watersheddles Reservoir	142	1530	6951	22%
02/27/016/021	Weecher Reservoir	5	149	909	16%
02/27/011/065	Wessenden Valley, Blackmoorfoot & Deerhill	876	9665	12410	78%
02/27/023/034	West Stonesdale (Garland Hill) Springs	0	0	282	0%
02/27/015/042	Whinney Gill & Jenny Gill Reservoirs	16	118	377	31%
02/27/005/026	Winscar, U & L Windleden, Harden & Snailsden	387	5514	10140	54%
02/27/012/036	Withens Clough Resr & Catchwater	249	2166	3319	65%
02/27/010/011	Yateholme, Riding Wood, Ramsden & Brownhill	308	2830	6820	41%

Licences with Aggregated Annual Quantities	Last calendar month MI	Year to date MI	Annual Limit	% of Annual Limit
Baitings, Ryburn, Boothwood, Green Withens	1274	12956	20457	63%
Langsett, Midhope	1365	15975	17155	93%
Worth Valley	499	5449	6951	78%
River Derwent (Elvington, Loftsom)	6045	77553	94841	82%
Cayton, Irton	638	7714	10700	72%
Selby Boreholes	1355	16537	25283	65%
Doncaster Wellfield	2064	24776	30295	82%
Doncaster Sub Group	1637	19920	26049	76%
Austerfield & Highfield Lane	620	8139	9956	82%
Hull Groundwater Sources	2149	26091	32850	79%

Third Party Agreements (Calendar Year)

Source	Units in MI		Run date	
	Last calendar month MI	Year to date MI	Annual Limit	% of Annual Limit
CRT, Hudds Narrow Canal	18	73	1273	6%
Severn Trent Ladybower Reservoir	2120	5929	21550	28%

Latest Reading date:

02-Apr-24

	Year to date MI	Annual Limit	% of Annual Limit
Winscar To Langsett Transfer Usage	1349	2482	54%