

1. Rainfall

The Yorkshire Region Has Received 124.7% of LTA for March

2. Reservoirs (surface water supply reservoirs not including Hull)

Over the Past Week Our Reservoir Stocks Have Increased By 0.05% To 97.5%

3. Rivers

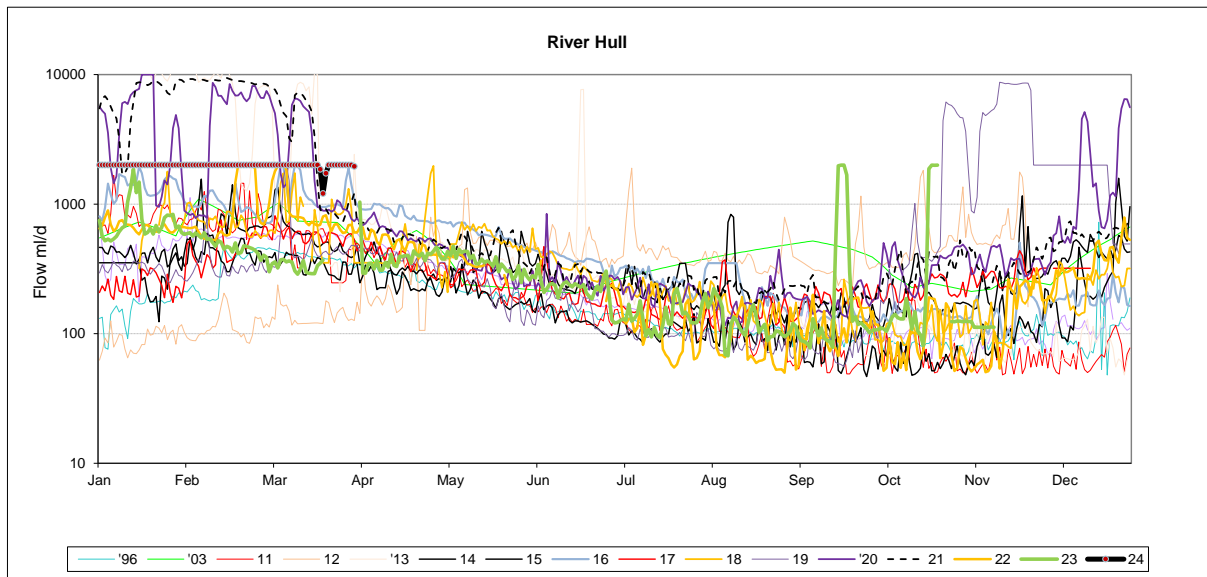
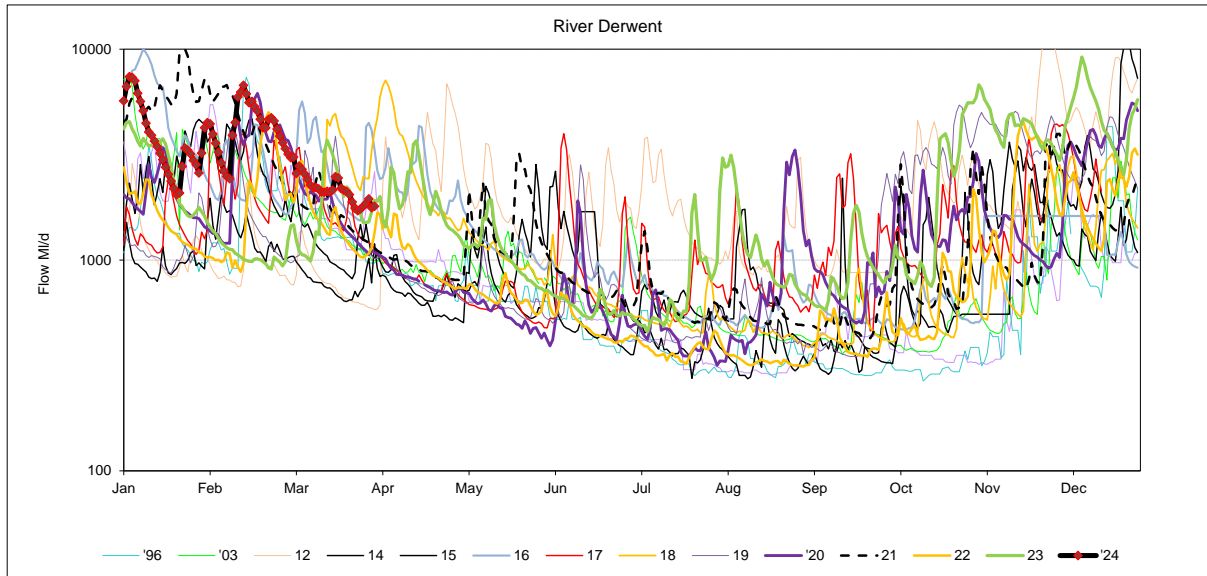
All of Our Rivers are Above Critical Levels

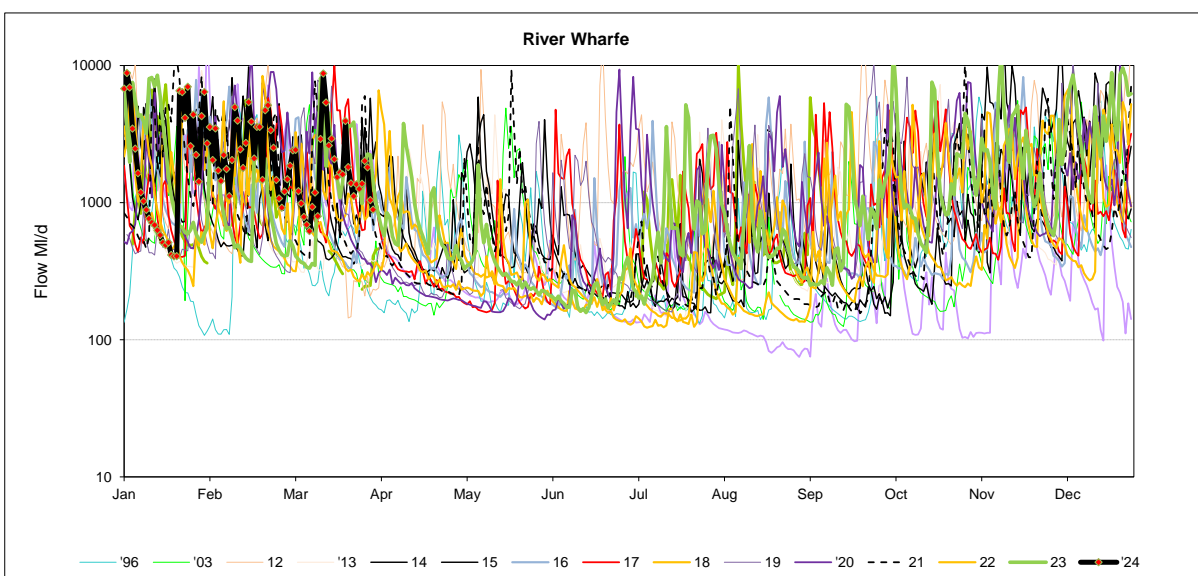
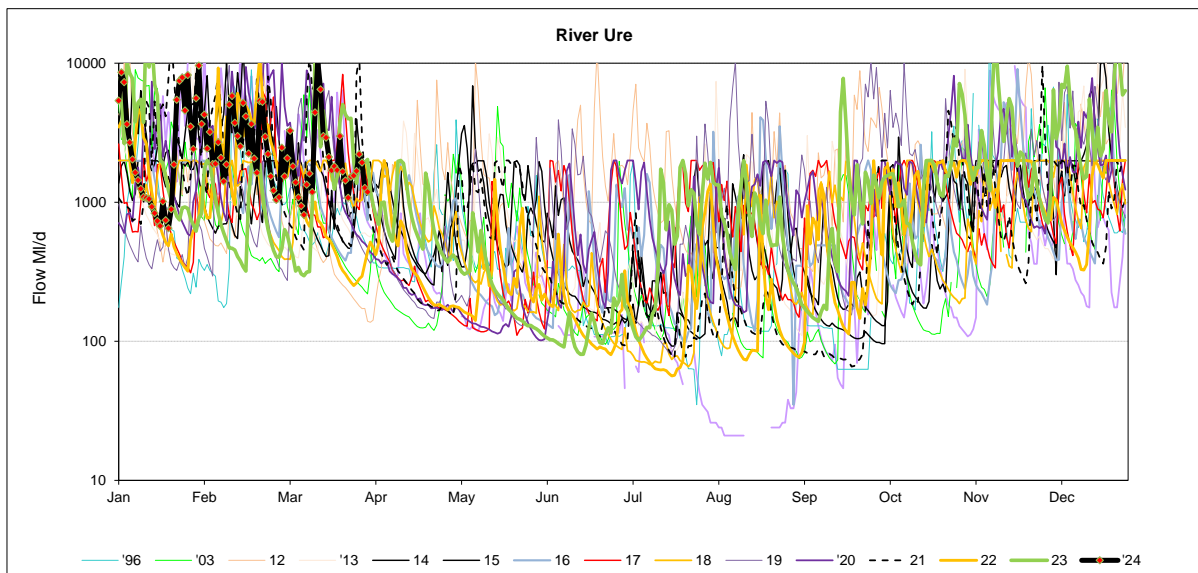
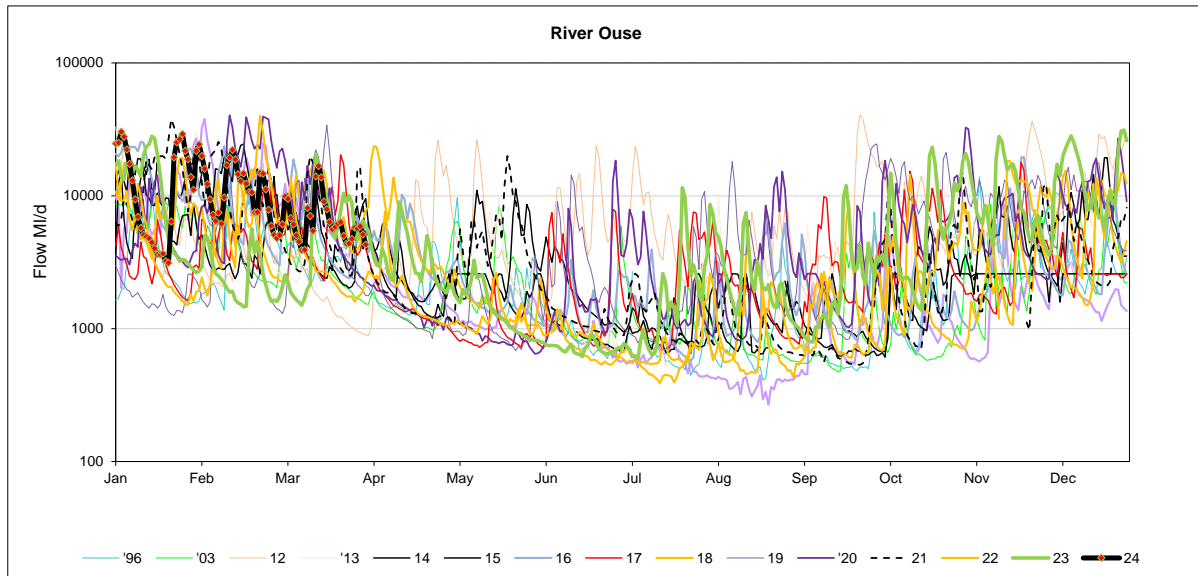
4. Demand

Regional Demand = 1323.7 Ml/d (including York)

5. Comments

	Mon 25-Mar	Mon 18-Mar	Mon 11-Mar	Mon 04-Mar	Critical flow bands
Derwent	✓ 1764	✓ 2485	✓ 2206	✓ 2571	305
Hull (using gauged (residual flows) only from 2011)	✓ 2000	✓ 2000	✓ 2000	✓ 2000	45 / 159 / 227
Ouse	✓ 4356	✓ 7917	✓ 8108	✓ 9481	400 / 650 / 1000
Ure	✓ 1077	✓ 2116	✓ 1607	✓ 3271	50 / 163 / 300
Wharfe	✓ 1115	✓ 2073	✓ 1183	✓ 2427	252 / 389 / 488 / 580





Yorkshire Region (Met Office)				England/Wales	
Month	mm	LTA	LTA(%)	mm	LTA(%)
August	84	77	109%	79	99%
September	84	71	119%	92	123%
October	148	84	176%	156	156%
November	105	90	117%	120	118%
December	162	89	182%	160	155%
January	100	79	127%	96	103%
February	97	69	141%	140	191%

SOURCE OF DATA : Hydrological Summary of Gt Britain, Institute of Hydrology

Yorkshire Water Services Data			
Rainfall Station	Total March	LTA March	LTA % March
Tophill	NDA	50	0%
Cottingham	NDA	53	0%
Bridlington	NDA	53	0%
Roundhill	126.1	93	136%
Fewston	95.1	78	122%
Osmotherley	53.5	60	89%
Scar House	162.0	126	129%
Watersheddles	149.8	116	129%
Gt Walden Edge	133.8	109	123%
Walshaw Dean	125.1	119	105%
Blackmoorfoot	113.0	106	107%
Ramsden	149.2	132	113%
Redmires	178.3	92	194%
Langsett	NDA	95	0%
YORKSHIRE REGION	128.6	103.1	125%
EAST REGION	53.5	60.0	89%
PENNINE (WEST)	128.6	103.1	125%

NDA= No data available/lack of readings, impacts % LTA for the month

SOURCE OF DATA : YWS RAIN GAUGES- weekly, so monthly data may include previous month or miss start of month

MAJOR SOURCE OUTPUTS

25 March 2024

21/03/2024

	Operational Maxima & Design Yields (Ml/d)	WRAP Targets Week Beginning 21/03/2024	Daily Average Previous 5 Days Starting - 21/03/2024	WRAP Targets Week Starting - 14/03/2024	Daily Average Week Starting - 14/03/2024
WATER TREATMENT WORKS					
CENTRAL					
ECCUP NO 1 WTW	100	53	54	53	54
ECCUP NO 2 WTW	60	44	40	44	42
HEADINGLEY	95	63	69	63	70
HARLOW HILL	41.5	27	26	27	26
THORNTON STEWARD	22.5	20	22	20	21
EAST					
EAST NESS	17	8	9	8	9
IRTON	23.5	13	13	13	13
RUSWARP	12	7	7	7	7
TOPHILL LOW	68	40	43	40	42
KELDGATE	90	60	58	60	66
NORTH WEST					
CHELLOW	175	148	153	148	147
GRAINCLIFFE	60	38	38	38	39
SLADEN VALLEY	12	8	9	8	8
OLDFIELD	10.1	6	7	6	6
EMBSAY	25	17	19	17	20
SOUTH					
INGBIRCHWORTH	20	20	19	20	19
LANGSETT	56	36	47	36	46
(TOTAL)	75	56	66	56	64
EWDEN	40	35	34	35	35
LOXLEY	40	26	31	26	32
(TOTAL)	80	61	66	61	67
RIVELIN	75	64	70	64	74
SOUTH WEST					
ALBERT	55	51	50	51	48
FIXBY	30	21	20	21	20
KIRKHAMGATE	30	17	20	17	19
(TOTAL)	115	89	90	89	87
BLACKMOORFOOT	23	20	14	20	16
LONGWOOD	32	27	22	27	21
(TOTAL)	55	47	36	47	37
HOLMBRIDGE	29	19	26	19	24
GRID					
ELVINGTON	260	159	161	159	143
LOFTSOME BRIDGE	110	75	65	75	54

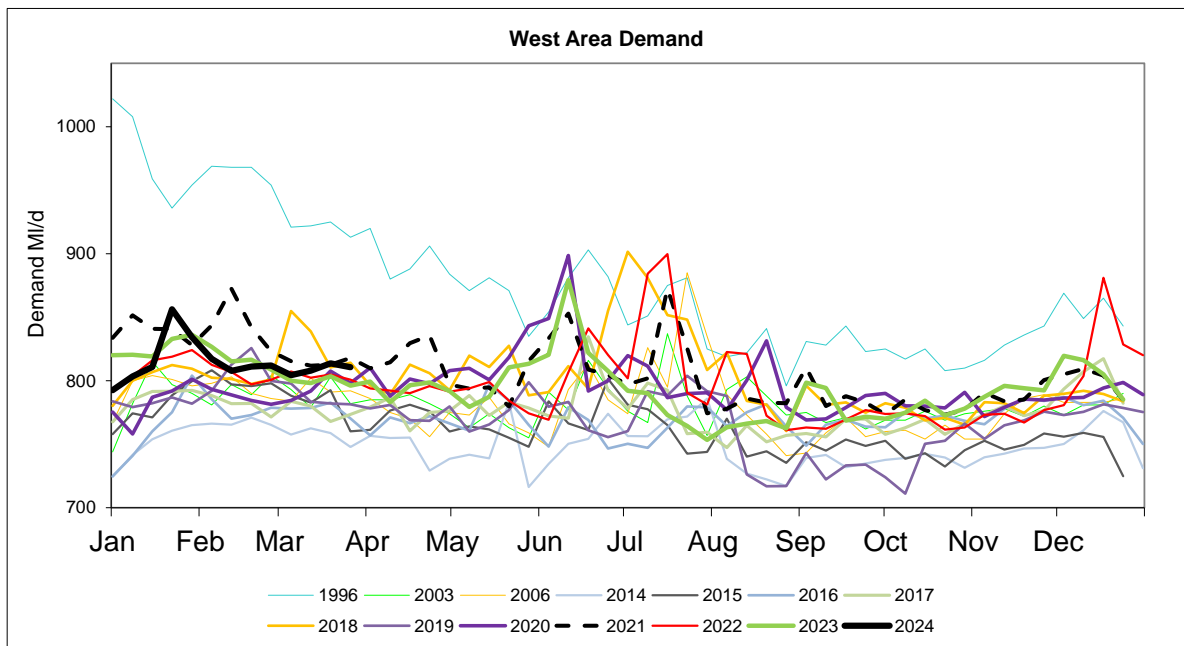
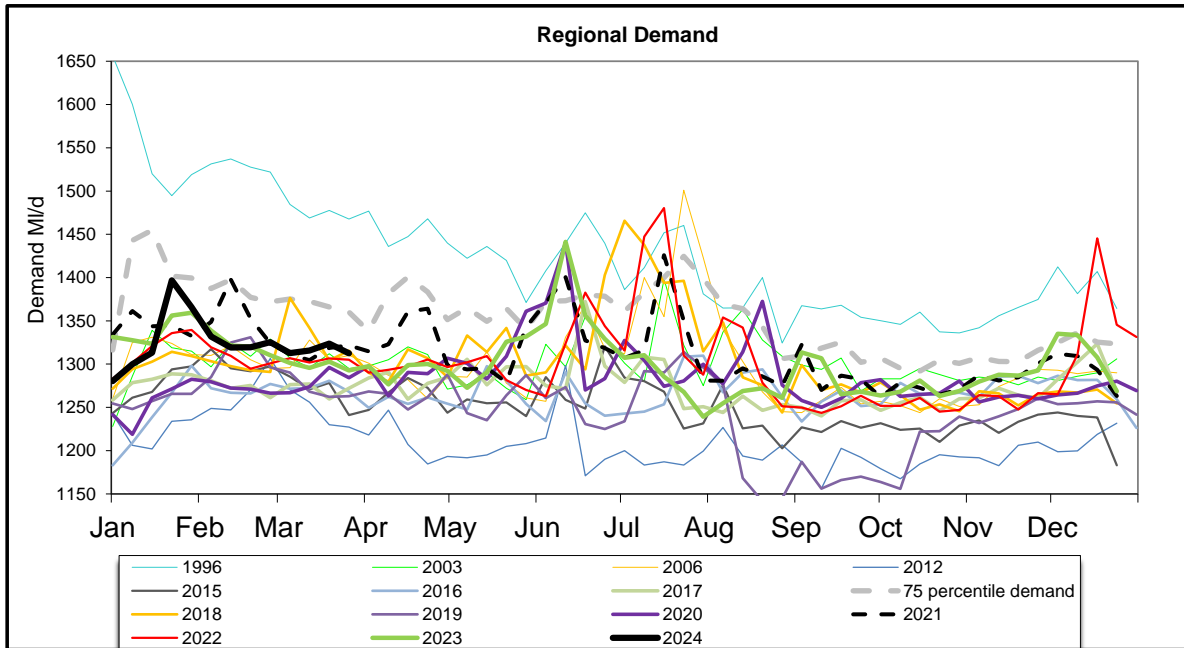
Daily Average Demand MI/d

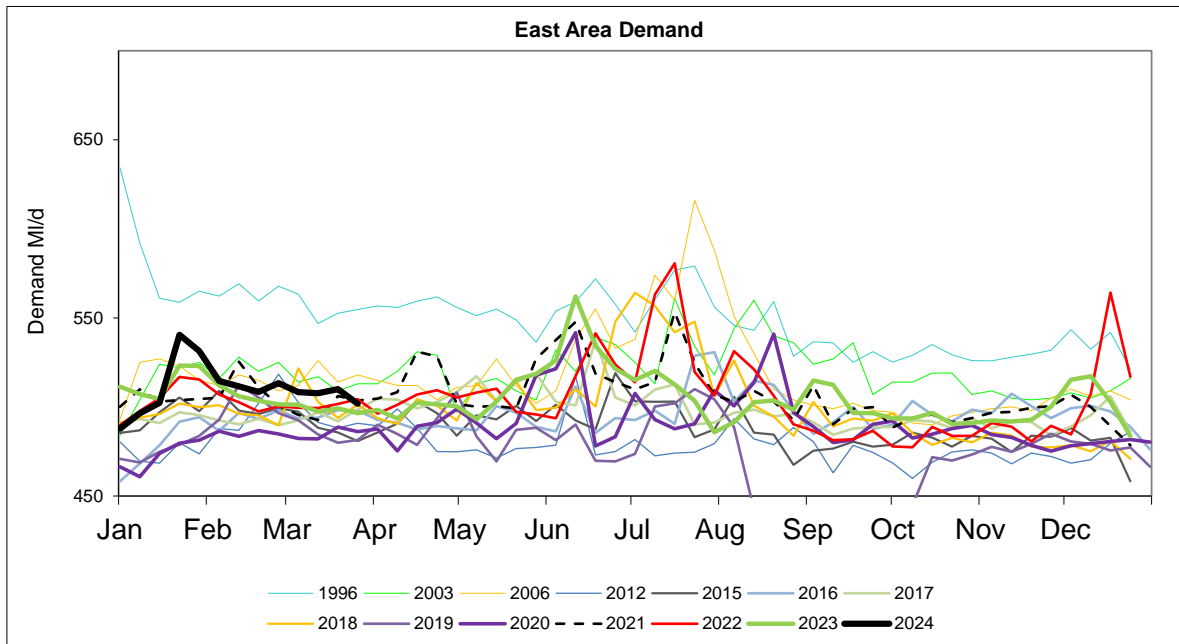
Week Ending Wednesday	L E E D S	W A M K O E + R F L E Y L D	S E L B Y	H A R R O G A T E	H U L L	M A L L T O N	S H E F F / B L Y	D O N C A S T E R	B R A D F O R D	C A L D E R	S K I P T O N	Y O R K A R E A	R E G I O N
21/02/2024	176	77	42	75	157	52	279	79	142	153	38	48	1320
28/02/2024	176	78	42	75	163	51	279	80	142	152	39	49	1325
06/03/2024	172	77	42	76	160	51	275	80	141	151	38	48	1313
13/03/2024	172	77	42	77	160	51	277	80	142	152	39	48	1316
20/03/2024	171	77	42	79	160	52	279	81	141	155	39	48	1324

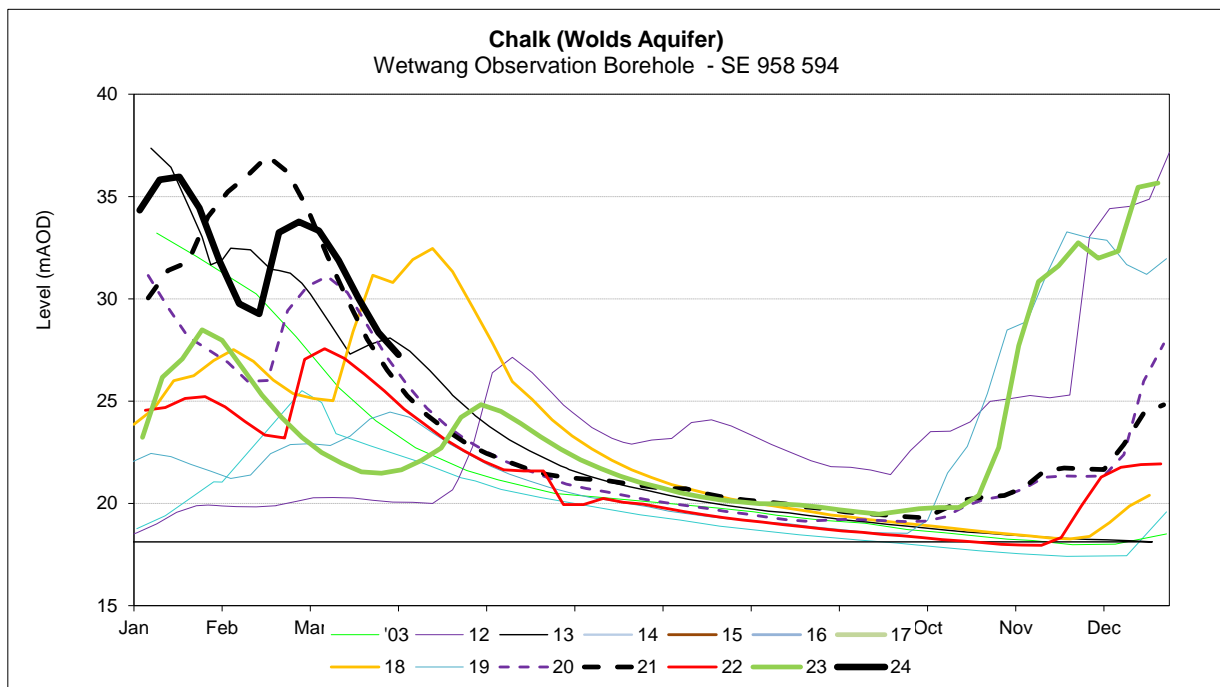
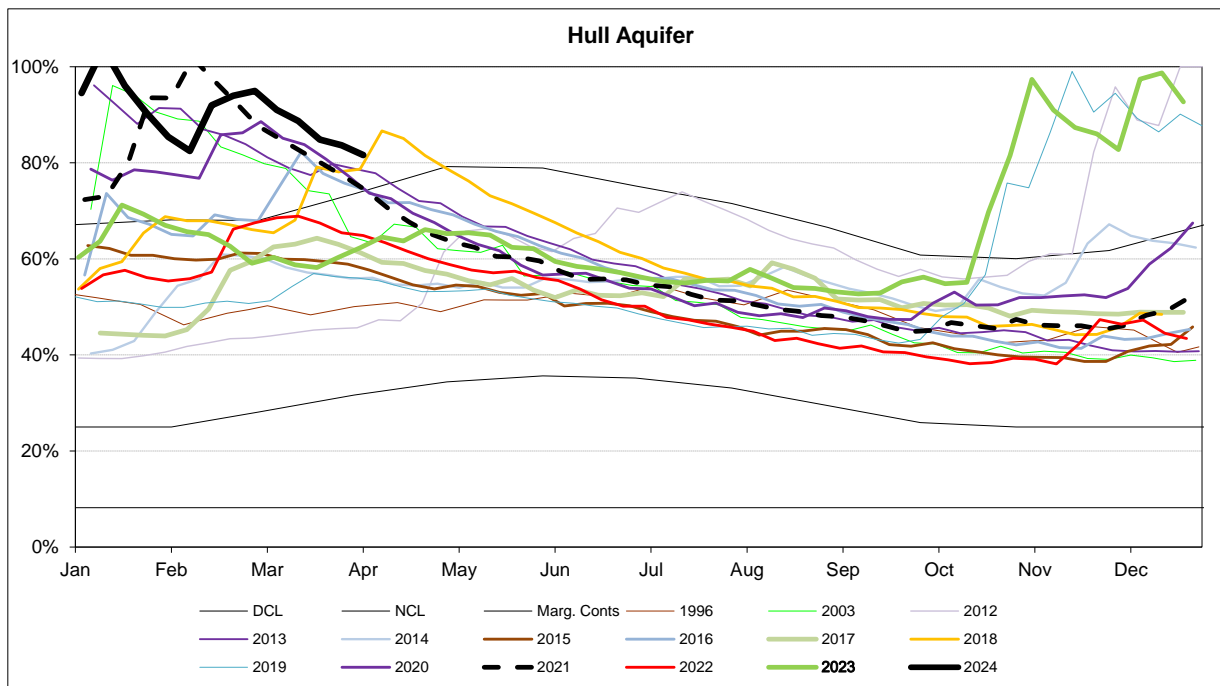
MONTHLY DEMANDS FROM WIS REPORT

Feb-24	174	66	41	72	160	50	289	70	145	149	37	49	1301
Mar-24	174	65	39	72	166	48	300	66	141	151	37	46	1306

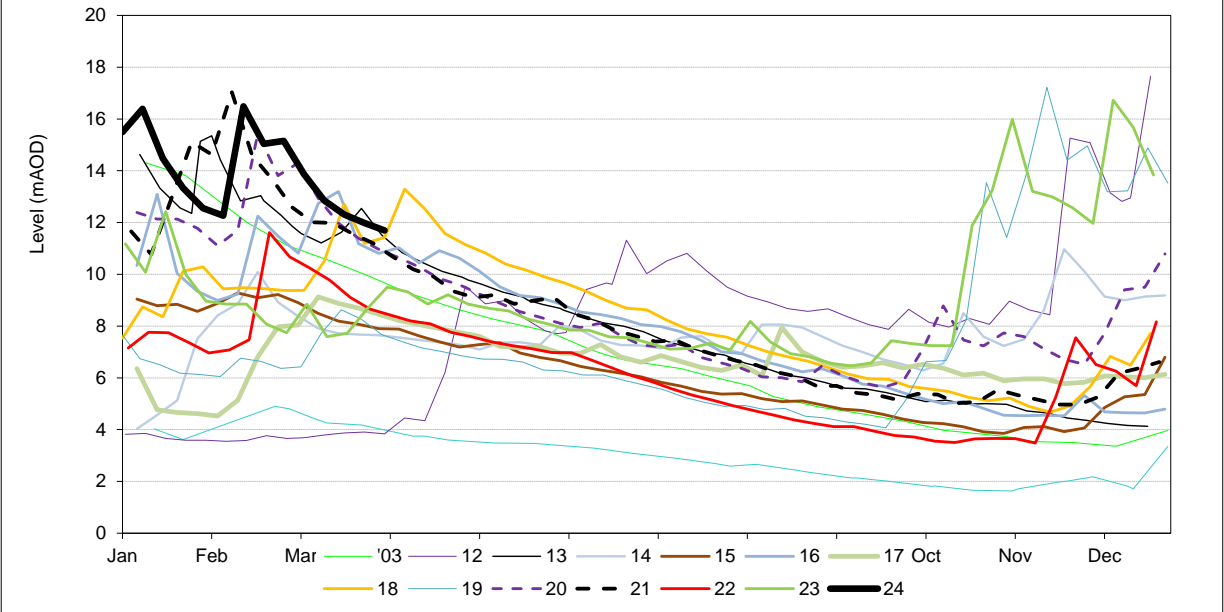
NB Current month demands include some estimates for minor sources and are not exactly comparable with previous months' figures.



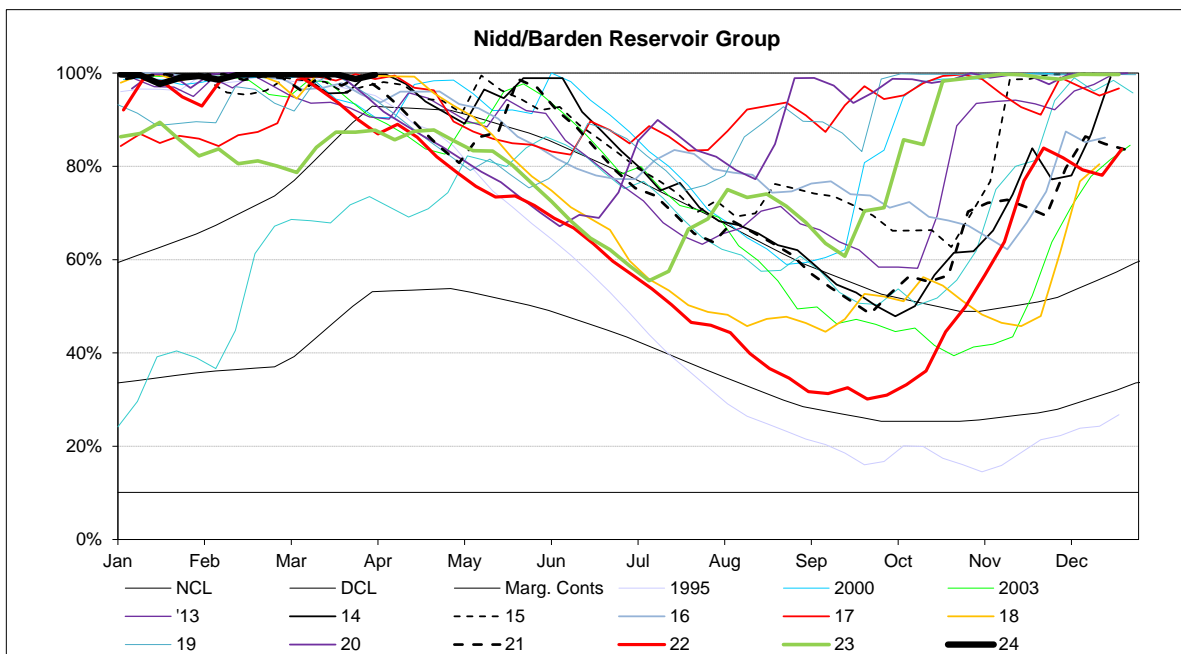
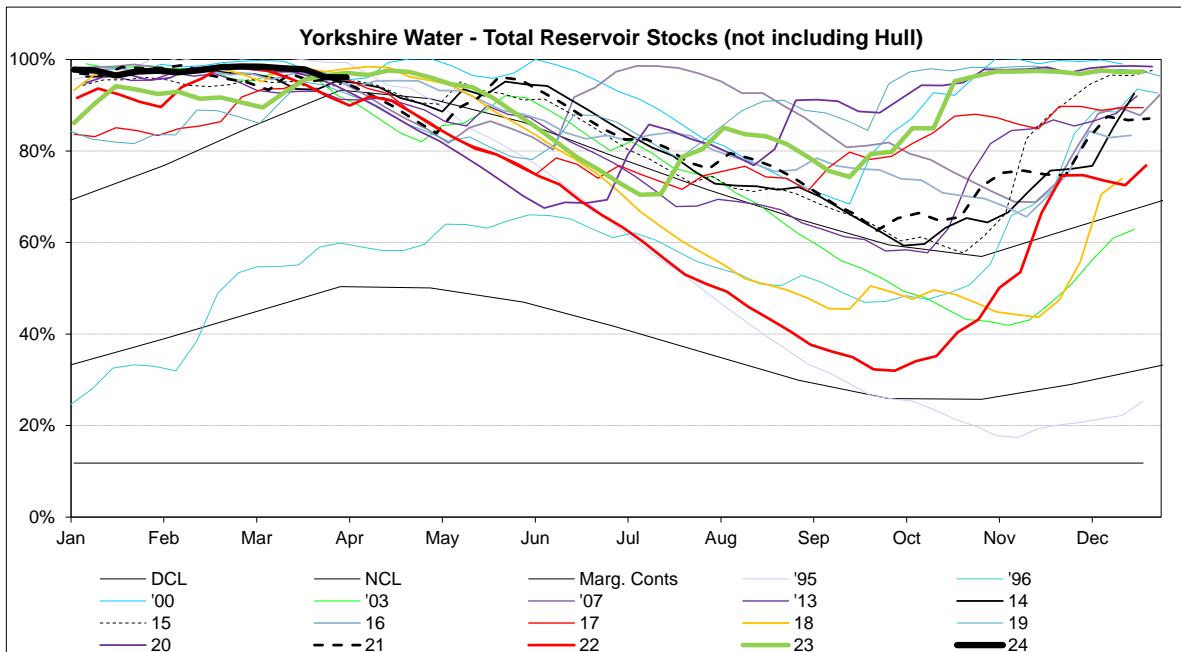


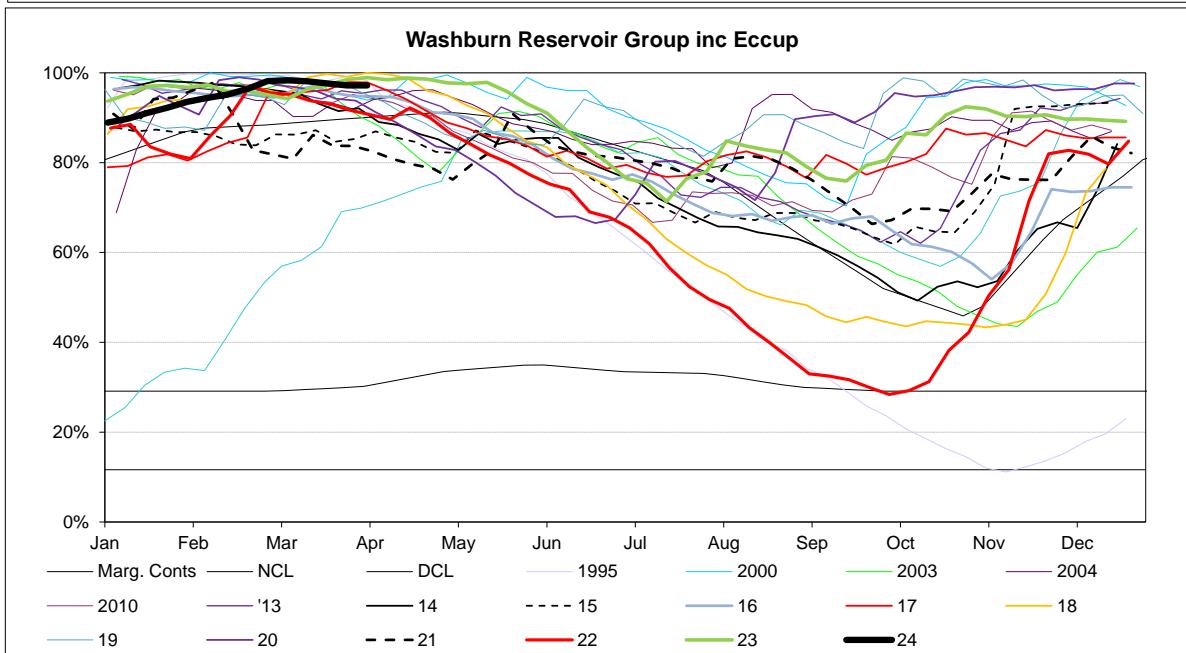
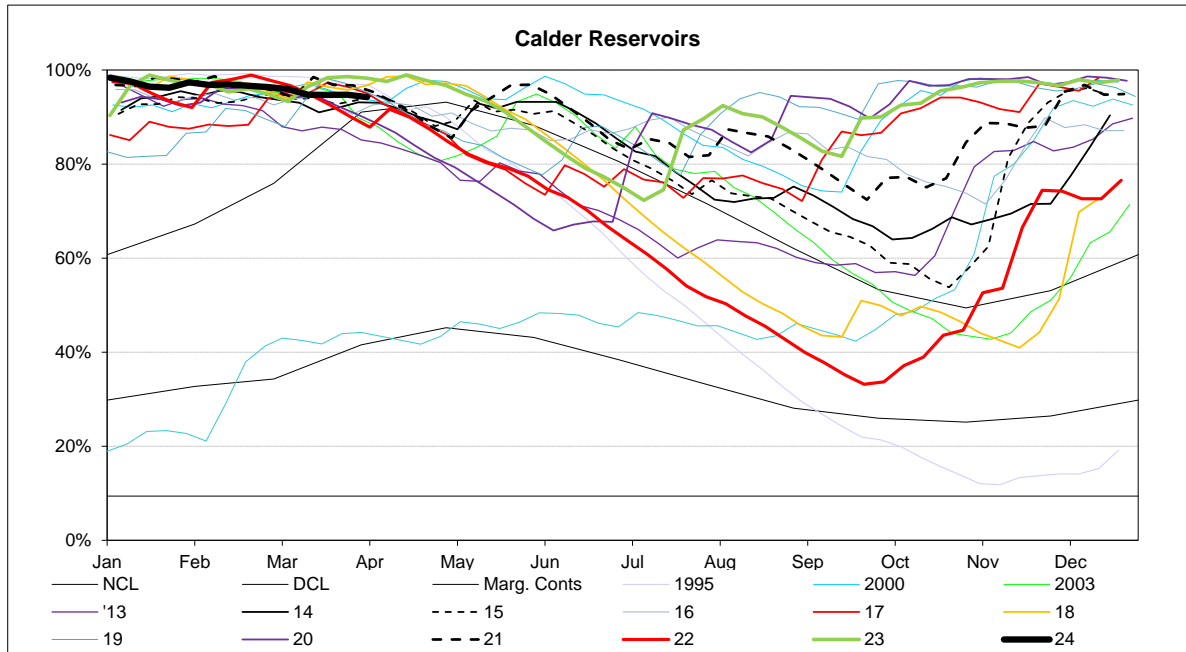


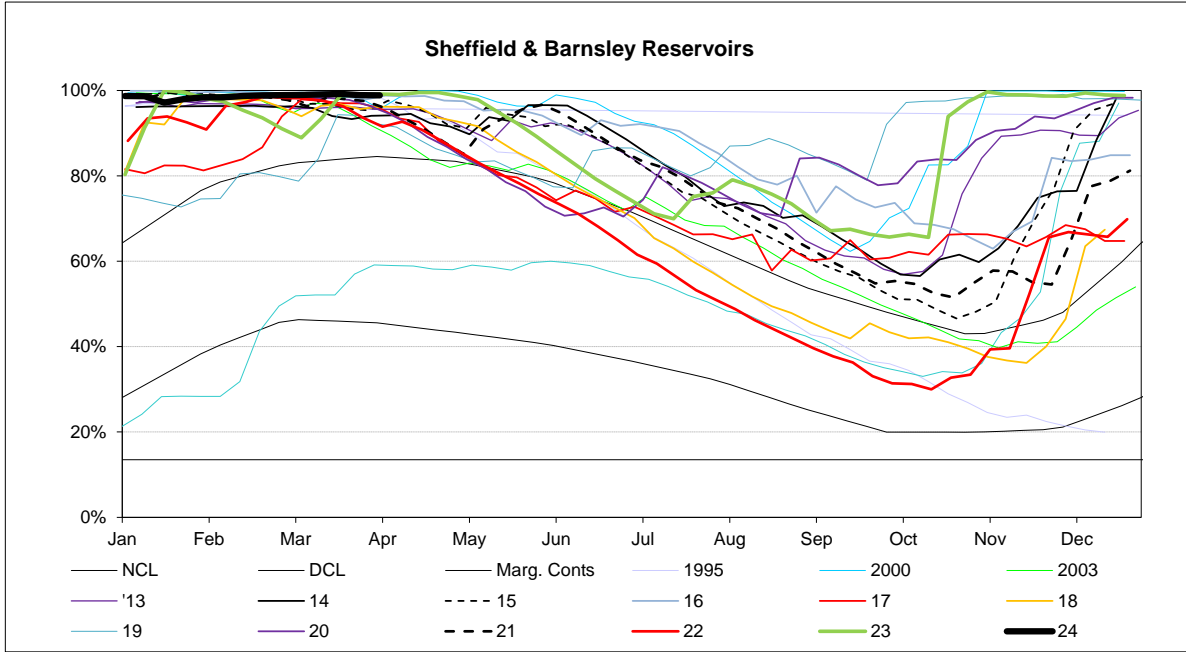
Chalk (Hull Aquifer)
Westwood Observation Borehole - TA 020 399



RESERVOIR STOCKS	01/04/2024		% Change	Planned Reservoir Safety Work Reason for Drawdown	Required Drawdown & Duration	
Reservoir Group	% Stocks @	% Change	last week			
Calderdale (excl Withens Clough)	83.2%	-1.1%	-1.0%	Access for Tunnel Grouting at Upper IRE Access for Tunnel Grouting at Middle IRE Increase Drawdown Capacity Increase Drawdown Capacity	June 23 - Mar 24 Apr 24 - Oct 24 Feb 24 - May 24 June 24 - Oct 24	24.0% 28.0% 62.0% 21.0%
Boothwood/Ryburn (incl WC)	97.2%	0.0%	1.5%			
(Gorpley)	72.8%	-2.8%	0.5%			
Huddersfield	97.9%	-0.7%	-0.4%			
Brownhill/Digley	99.9%	-0.1%	0.0%			
Walshaw Dean Middle	32.9%	2.5%	3.5%			
Walshaw Dean Lower	100.0%	0.0%	0.0%			
Widdop	58.5%	-5.7%	-5.6%			
Widdop	58.5%	-5.7%	-5.6%			
Calder Area Total	94.2%	-0.5%	0.0%			
Nidd/Barden/Chelker	99.6%	0.9%	-1.0%	Drawdown Improvements Embankment Stability Works Drawdown Improvements Inspection	May 23 - June 24 Jan 23 - Dec 24 May 23 - June 24 Mar 24 - Apr 24	53.0% 86.0% 53.0% 92.0%
Grimwith	100.0%	0.1%	-0.1%			
Worth Valley	100.0%	0.0%	0.0%			
Gouthwaite	46.5%	-1.8%	-46.5%			
March Ghyll	88.3%	-0.1%	2.0%			
Gouthwaite	46.5%	-1.8%	-46.5%			
Hewenden	100.0%	0.0%	0.0%			
North West Area Total	99.7%	0.5%	-0.4%			
Leighton/Roundhill	100.0%	0.5%	-0.5%	Outlet Channel Repairs Bridge Repairs	Dates tbc Dates tbc	93.0% TBC
Haverah Park	100.0%	0.0%	12.9%			
Swinsty	100.0%	0.0%	0.0%			
Thruscross	100.0%	0.0%	0.0%			
Swinsty	100.0%	0.0%	0.0%			
Thruscross	100.0%	0.0%	0.0%			
North Area Total	97.5%	0.1%	1.0%			
Rivelin Valley	100.0%	0.0%	0.0%	Damage to Overflow Channel Damage to Overflow Channel Install Overflow Debris Barrier Overflow Investigation	Nov 23 - Aug 24 Nov 23 - Aug 24 June 24 - Aug 24 Dates tbc	98.0% 89.0% 95.0% 95.0%
Little Don	100.0%	0.0%	0.0%			
Ewden Valley	100.0%	0.0%	0.0%			
Loxley Valley	100.0%	0.0%	0.0%			
Redmires	87.5%	-0.5%	-3.2%			
Redmires Upper	91.3%	0.3%	-1.0%			
Redmires Middle	70.5%	-2.5%	-9.8%			
Broomhead	100.0%	0.0%	0.0%			
Strines	100.0%	0.0%	0.0%			
South Area Total	98.4%	0.0%	-0.4%			
Tophill Low	85.0%	-3.2%	3.4%			
Hull Aquifer	81.6%	-2.0%	-1.2%			
East Area Total	81.9%	-2.1%	-0.8%			
Regional Total (DCP) (inc East Area)	95.7%	-0.2%	-0.3%			
YORKSHIRE TOTAL (Supply) (not inc East Area)	97.5%	0.0%	-0.2%			



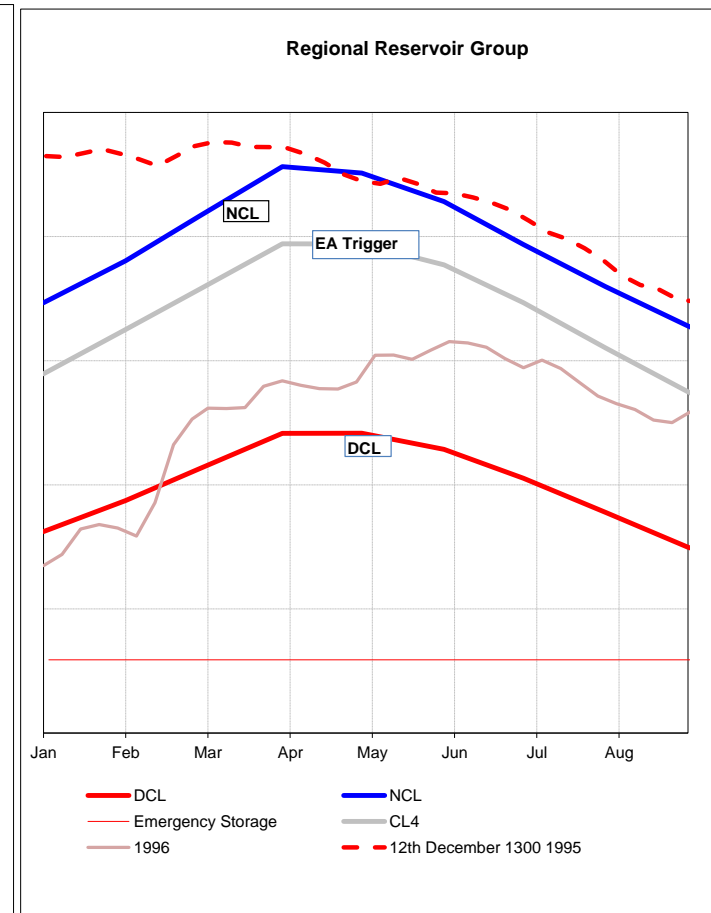
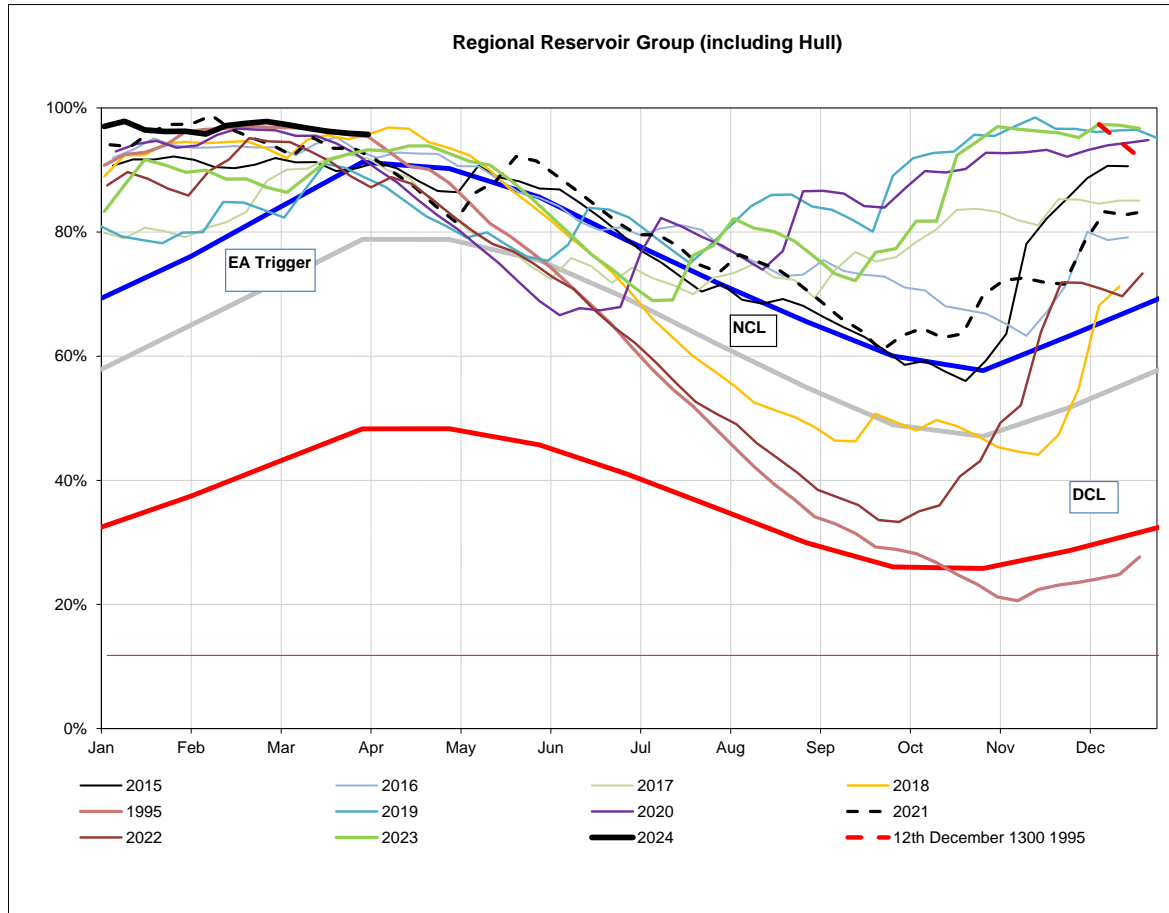




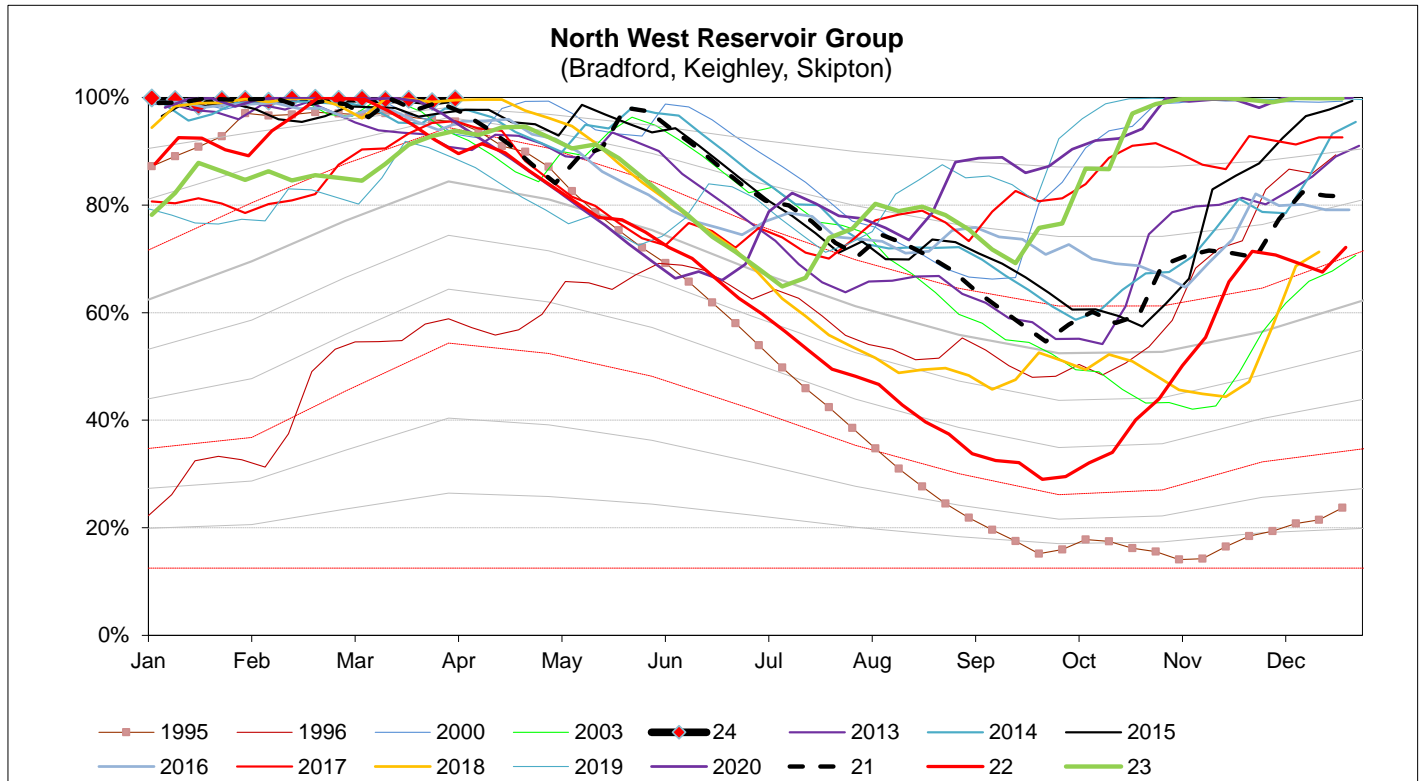
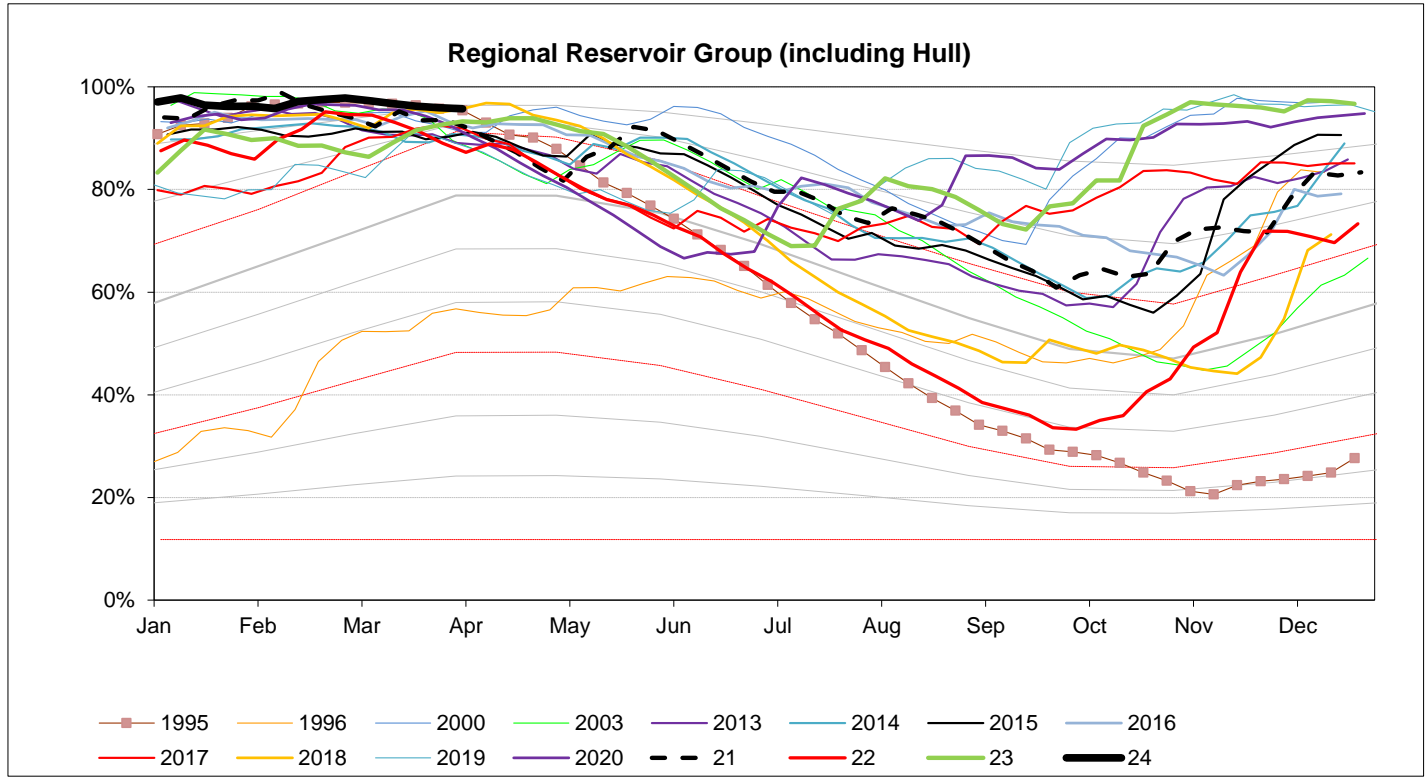
EA STOCKS REPORT

25 March 2024

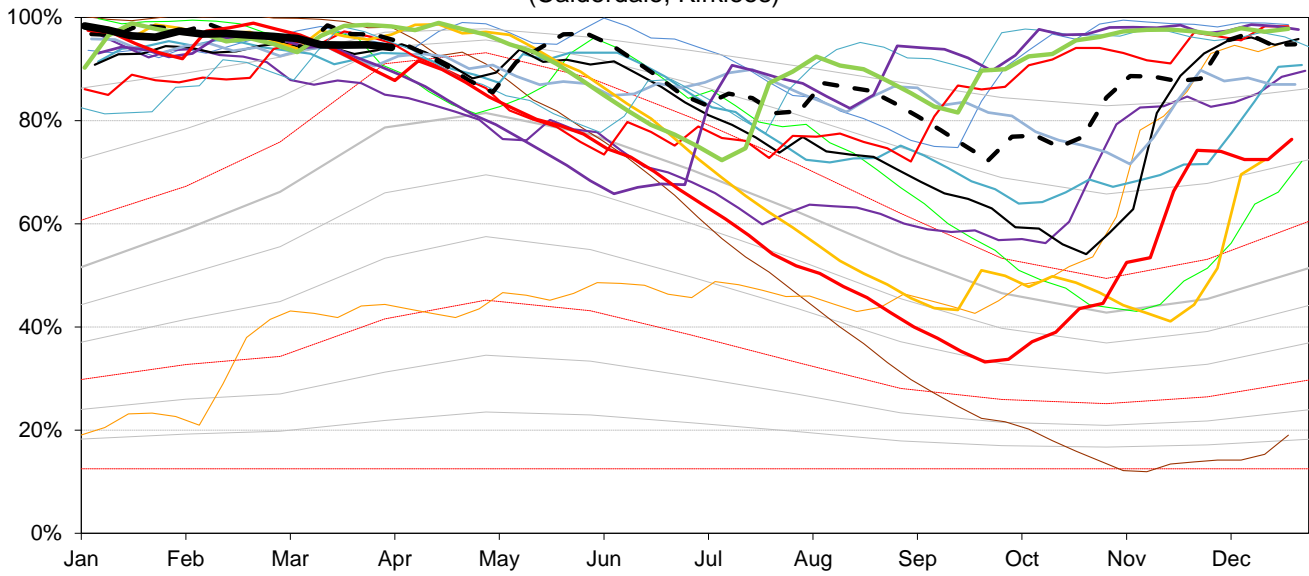
EA Stocks Report	01/04/2024						
	MI	%	% change		MI	%	% change
South West Area Supply Reservoirs				South Area Supply Reservoirs			
Calderdale Group	9265	83.2%	-1.1%	Don Valley	2023	97.3%	0.1%
Huddersfield Group	13818	97.8%	-0.8%	Little Don	7369	100.0%	0.0%
Brownhill/Digley excl Holmestye:	5613	99.9%	-0.1%	Ewden Valley	4937	100.0%	0.0%
Boothwood/Ryburn	11339	96.9%	0.0%	Loxley Valley	6874	100.0%	0.0%
				Rivelin	815	100.0%	0.0%
South West Reservoir Group	41492	94.2%	-0.5%	Redmires	2432	87.5%	-0.5%
Bradford Area Supply Reservoirs				South Reservoir Group	24451	98.4%	0.0%
Gouthwaite	2703	46.5%	-1.8%	Winscar Group	9392	100%	0.2%
Grimwith	21764	100.0%	0.1%				
Nidd/Barden/Chelker	19110	99.6%	0.9%	Compensation Reservoirs			
Rombalds/Thornton Group	2185	97.9%	2.7%	Scout Dike	694	100.0%	0.0%
				Underbank	2867	100.0%	0.0%
Skipton Area Supply Reservoirs				Morehall	2173	100.0%	0.0%
Embsay	713	98.6%	-0.8%	Damflask	5106	100.0%	0.0%
Worth Valley Group	3312	100.0%	0.0%				
North West Reservoir Group	47084	99.7%	0.5%	North Area Supply Reservoirs			
				Washburn	22716	97.2%	0.0%
Compensation inc Silsden	2308	98.1%	-0.4%	Eccup	6354	90.7%	0.0%
Gouthwaite	2703	46.5%	-1.8%	Leighton/Roundhill	7401	100.0%	0.5%
March Ghyll & Elslack Reservoirs excluded for consistency with stocks predictions in WRAPSIM				Haverah Park	1002	100.0%	0.0%
				Lumley Moor	381	100.0%	0.0%
				Thornton Steward	921	97.1%	0.0%
East Area Supply Reservoirs							
Tophill Low	1430	85.0%	-3.2%	North Reservoir Group	32422	97.5%	0.1%
Hull Aquifer	15507	81.6%	-2.0%	Lindley Wood Compensation	2920	100.0%	0.0%
East Reservoir Group	16938	81.9%	-2.1%	Regional Reservoir Group	171779	95.7%	-0.2%
				(sum of South West, North West, East, South, North & Winscar Reservoirs)			



Triggers	
EA early warning (CL4)	Water resources to advise EA on production
Hosepipe Restrictions	When projected falling stocks fall below DCL
Drought Orders	When stocks are below DCL.

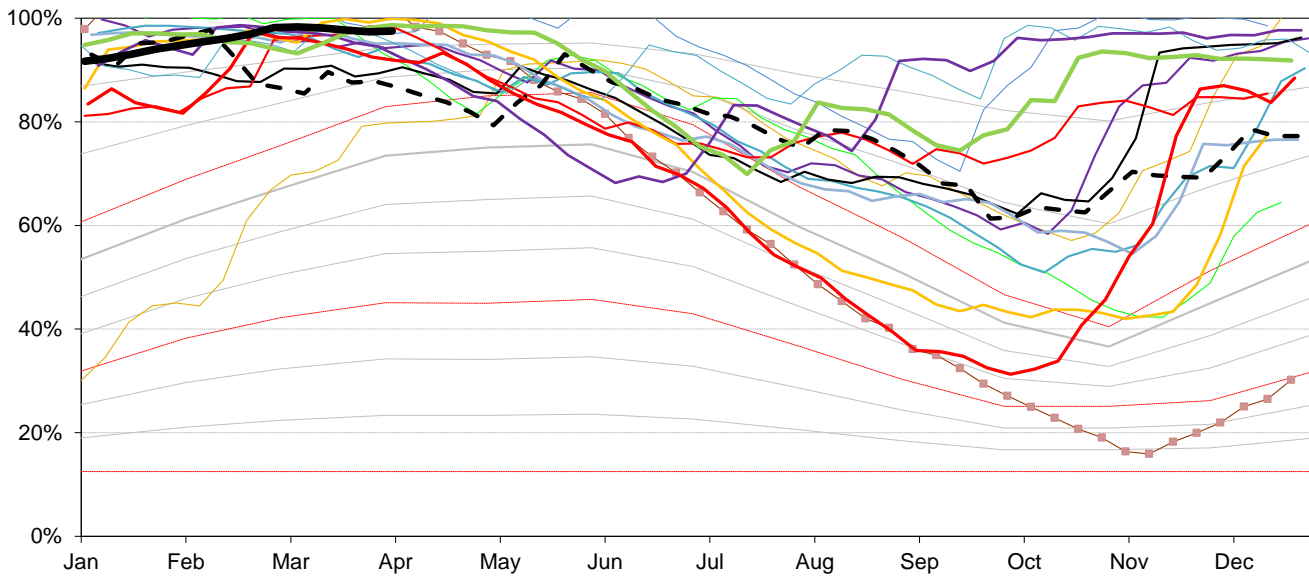


South West Reservoir Group
(Calderdale, Kirklees)



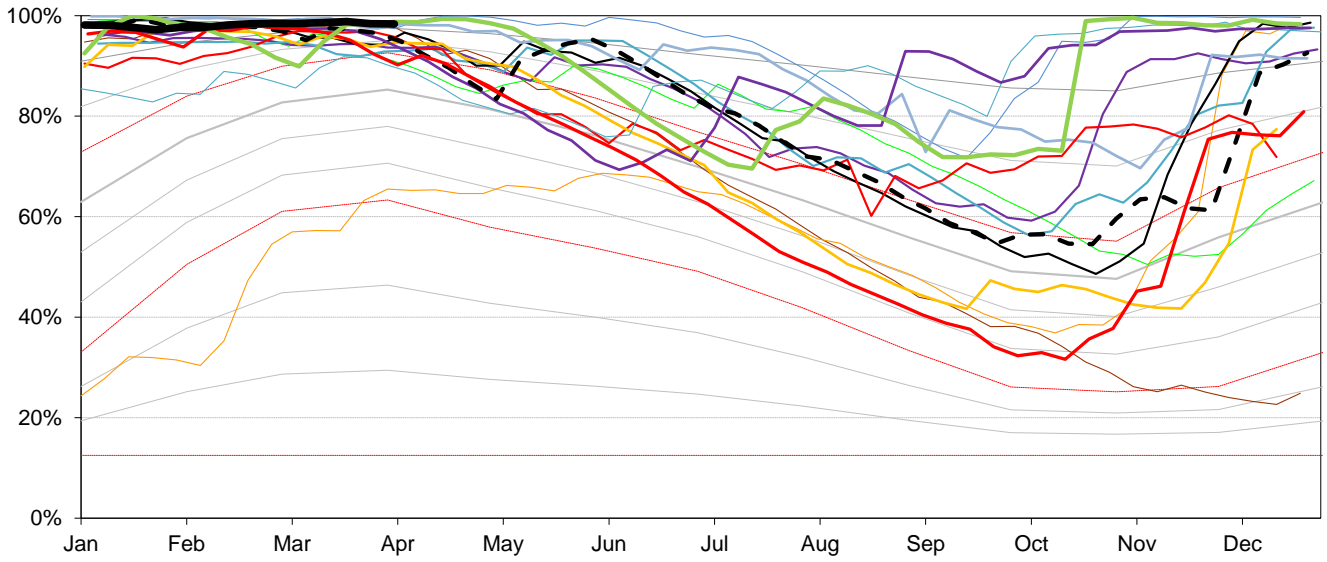
— 1995 — 1996 — 2003 — 2000 — 2013 — 2014 — 2015 — 2016
 — 2017 — 2018 — 2019 — 2020 - - 21 — 22 — 23 — 24

North Reservoir Group
(Leeds, Harrogate)



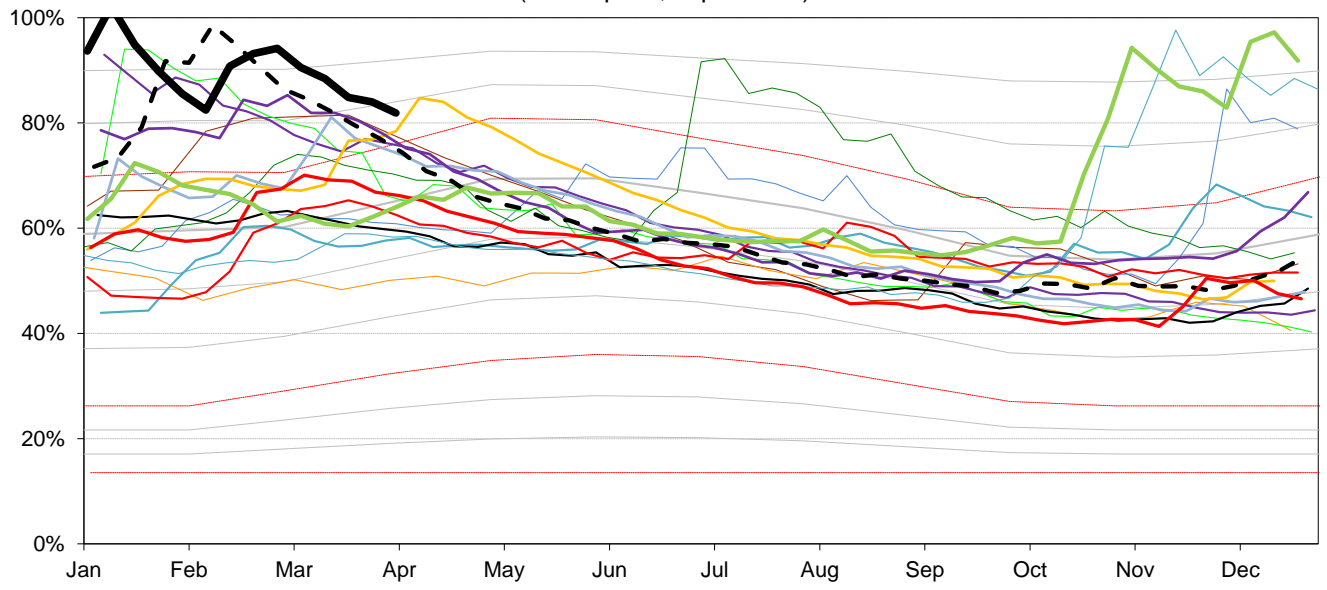
— 1995 — 1996 — 2000 — 2003 — 2013 — 2014 — 2015 — 2016
 — 2017 — 2018 — 2019 — 2020 - - 21 — 22 — 23 — 24

South Reservoir Group
(Sheffield, Barnsley)

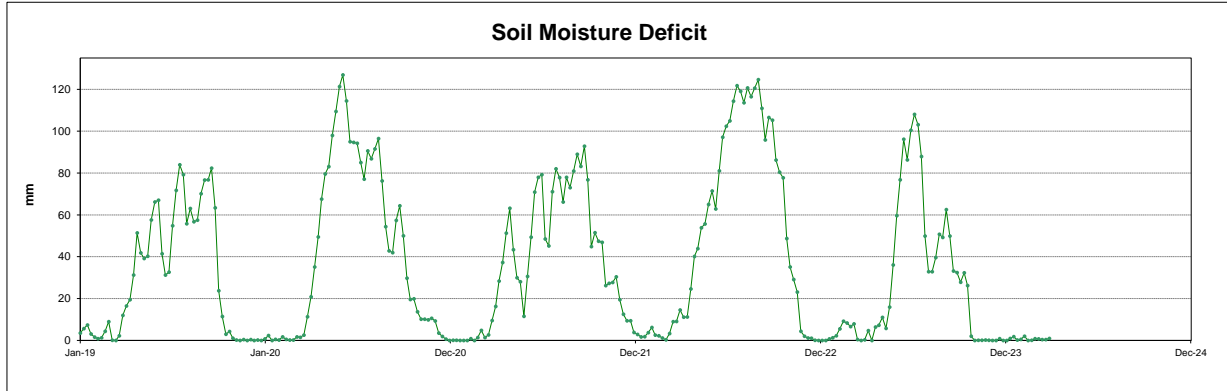
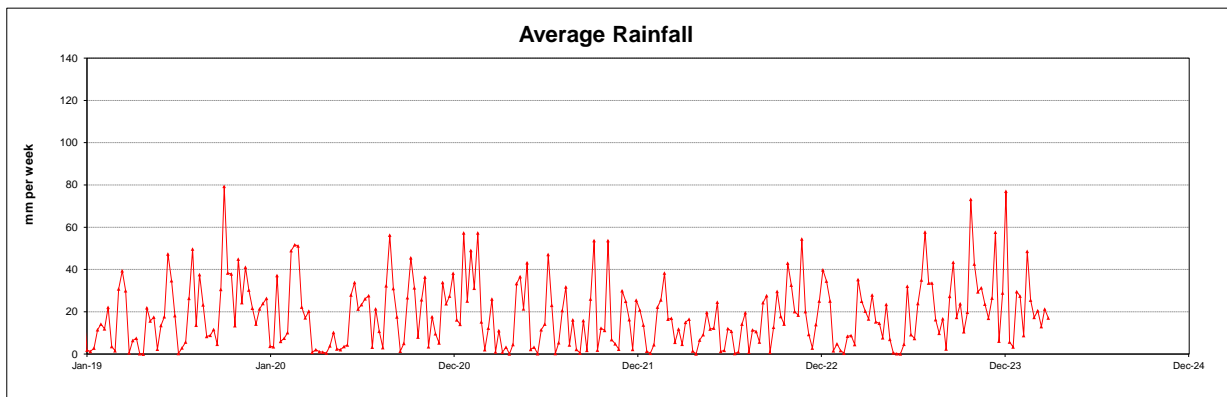
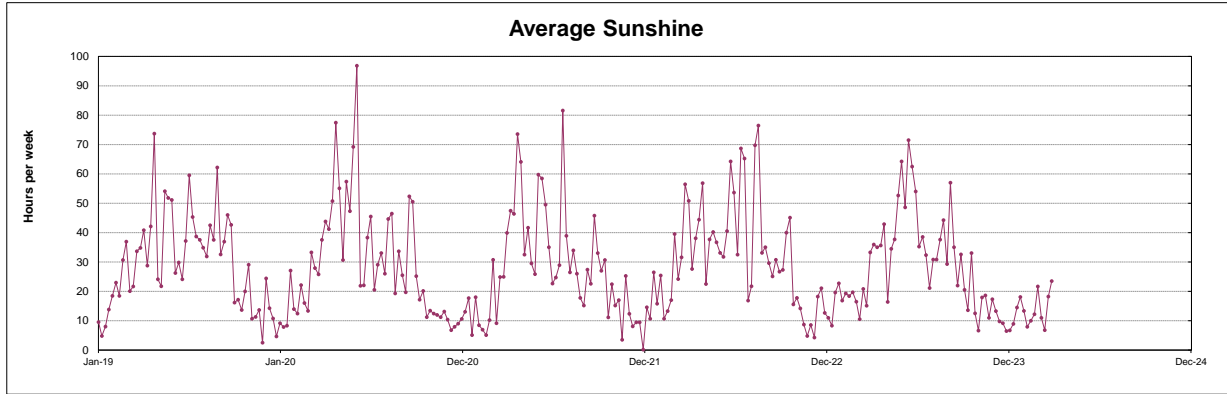


— 1995 — 1996 — 2000 — 2003 — 2013 — 2014 — 2015 — 2016
 — 2017 — 2018 — 2019 — 2020 - - 21 — 22 — 23 — 24

East Reservoir Group
(Hull Aquifer, Tophill Low)



— 1995 — 1996 — 2000 — 2003 — 2013 — 2014 — 2015 — 2016
 — 2017 — 2018 — 2019 — 2020 - - 21 — 22 — 23 — 24



This page will normally be updated monthly (approx mid month).

This data may be subject to change following routine validation checks.

Where showing a negative value, this is normal at certain sources, due to the imports of water into that source being greater than the volumes abstracted.

Annual licences run from April to March.

Units in MI

Serial No	Source	This calendar month MI	Run date		
			Year to date MI	Annual Limit	% of Annual Limit
02/27/023/332	Ainderby Steeple Boreholes	79	1418	1760	81%
03/28/083/010	Armthorpe Boreholes	141	2471	3319	74%
03/28/083/012	Austerfield Boreholes	134	3405	11615	29%
02/27/022/020	Aysgarth & Newbiggin Springs	8	167	341	49%
02/27/012/035	Baitings, Ryburn & Blackhouse reservoirs	284	4775	20457	23%
02/27/023/032	Bellerby Borehole and springs near Bellerby	45	829	1250	66%
02/27/022/209	Birk Gill & River Burn	373	3919	6400	61%
02/27/012/254	Boothwood Reservoir & associated catchwaters	188	2817	20457	14%
02/27/10/112	Boshaw Whams Reservoir	0	0	55	0%
03/28/083/105	Boston Park Boreholes	102	2201	3318	66%
02/27/024/305	Brayton Barff Boreholes	0	0	2250	0%
02/26/030/002	Bridlington	86	1629	2500	65%
02/27/005/031	Broomhead Reservoir	660	11327	12410	91%
02/26/030/004	Burton Agnes	48	874	1000	87%
02/27/018/080	Carlton Hanger Lane Boreholes	185	2761	3500	79%
02/27/018/079	Carlton Mill Lane Boreholes	100	1803	3800	47%
02/27/019/009	Carr Bottom Reservoir, Burley Woodhead	0	80	409	20%
02/27/023/340	Catterick Boreholes	127	2403	2920	82%
02/27/027/136	Cayton Carr Lane Boreholes	96	1803	3928	46%
02/27/027/163	Cayton Station Road Borehole	24	550	2646	21%
02/27/019/137	Chelker Reservoir	219	3530	5000	71%
02/27/023/031	Coalsgarth Springs	2	51	750	7%
02/27/011/064	Colne Valley Catchwaters	98	2100	5840	36%
02/26/032/126	Cottingham Well	379	7202	18184	40%
02/27/018/081	Cowick Boreholes	228	4196	5250	80%
02/27/023/046	Cranehow & Downholme Springs	0	0	318	0%
02/27/023/030	Crumma, Newsham & Gandale Springs	46	944	1364	69%
02/27/005/030	Dale Dyke & Agden Reservoirs	525	10239	12410	83%
02/27/012/261	Dean Head & Scammonden	48	1034	3650	28%
02/27/19/121	Dib Spring, Hawkswick	0	0	27	0%
02/26/032/126	Dunswell Well	354	8264	16593	50%
NE/27/025/021	East Ness Boreholes	176	3234	5680	57%
02/26/031/087	Elmswell Wold Borehole	0	133	1273	10%
02/27/015/045	Embsay Reservoir	163	2032	1846	110%
02/27/016/196	Esholt Sewage Treatment Works	0	0	88	0%
02/26/032/124	Etton Boreholes	74	1709	5100	34%
03/28/083/012	Finningley Boreholes	206	3345	6780	49%
02/27/022/328	Fossdale (High Shaw) Springs	5	111	227	49%
02/27/018/120	Goosehouse Boreholes	144	3209	3500	92%
02/27/012/043	Gorpley Reservoir	0	0	1823	0%
02/27/016/022	Graincliffe Reservoir & Morton Springs	196	2054	2728	75%
02/27/012/037	Green Withens Ringstone Res & catchwater	311	4873	20457	24%
02/27/019/051	Greenhow Tunnel (Nidd Aqueduct) Dale Head Intake	0	0	214	0%
02/27/019/052	Greenhow Tunnel (Nidd Aqueduct) No.2 Access Shaft	0	0	6819	0%
NE/27/019/005	Grimwith Reservoir to Nidd Aqueduct	98	1223	3650	34%
02/26/030/003	Haithorpe Boreholes	210	4345	5000	87%
03/28/083/012	Hatfield Boreholes	75	1830	3319	55%
03/28/083/100	Hatfield Woodhouse Boreholes	0	0	3320	0%
02/27/029/010	Hazel Head Springs	32	501	1162	43%
02/27/012/041	Hebden, Luddenden & Hebble Valley Resrs	708	12369	15695	79%
02/27/018/077	Heck Boreholes	47	1225	2489	49%
03/28/083/012	Highfield Lane Boreholes	216	4464	11615	38%
02/27/023/685	Hollin Hill Borehole	0	13	45	30%
02/27/010/063	Holmestyes & Digley Reservoirs	173	3461	5840	59%
02/27/22/024	Horsehouse Spring, leyburn	0	0	33	0%
02/27/027/002	Howe Hill Well	49	877	1014	87%
02/26/031/006	Hutton Cranswick	25	473	796	59%
02/27/005/012	Ingbirchworth Reservoir & Annat Royd Intake	125	1518	3637	42%
02/27/005/202	Ingbirchworth South Borehole	3	49	132	37%
02/27/027/058	Irton	267	5110	8215	62%
02/27/21/015	John O'Gaunts and Beaverdyke Reservoirs	0	0	1909	0%
02/27/014/010	Keighley Moor Reservoir	36	504	6951	7%
02/27/025/128	Keld Head Boreholes	99	1924	3319	58%
02/26/032/126	Keldgate Boreholes	78	1582	5819	27%
02/26/031/002	Kilham	32	210	1818	12%
02/27/005/032	Langsett Reservoir	622	12218	17155	71%
02/27/022/210	Leighton Reservoir & Spruce Gill stream intake	230	6502	13184	49%
03/28/083/107	Littleworth Borehole	0	0	1659	0%
02/27/028/270	Loftsome Bridge ASR Borehole No.1	0	0	750	0%
02/27/014/009	Lower Laithe Reservoir	178	2535	6951	36%
02/27/005/011	Midhope Reservoir & Knoll Brook Intake	213	3214	17155	19%
02/26/034/006	North Newbald	0	0	1137	0%
03/28/083/012	Nutwell Boreholes	162	2845	4983	57%
02/27/019/006	Panorama, Hilltop & Old Reservoirs & Springs	0	90	1000	9%
02/27/018/078	Pollington Boreholes	129	2819	5000	56%
02/27/014/058	Ponden Reservoir	1	738	6951	11%
02/27/016/023	Reva Reservoir, Hawkesworth	218	1196	1364	88%
02/27/005/029	Rivelin and Redmires Reservoirs	154	2752	8030	34%

02/27/028/017	River Derwent at Elvington	2494	49292	75000	66%
02/27/028/083	River Derwent at Loftsme Bridge	1383	26093	30400	86%
02/27/029/012	River Esk	146	3012	7823	38%
02/26/031/047	River Hull & West Beck	694	16271	25000	65%
02/26/032/194	River Hull for Sewer Cleaning	0	0	91	0%
02/27/024/078	River Ouse at Acomb	495	9404	35000	27%
02/27/024/158	River Ouse at Moor Monkton	1620	29135	73000	40%
02/27/022/214	River Ure at Kilgram Bridge	117	3391	15000	23%
02/27/020/196	River Wharfe at Arthington	2	2939	19009	15%
02/27/019/129	River Wharfe at Lobwood	814	18261	23742	77%
03/28/083/012	Rossington Bridge Boreholes	0	0	5172	0%
02/27/022/027	Roundhill and Lumley Moor Reservoirs	1	8	3500	0%
02/27/005/013	Royd Moor Reservoir & Intakes	83	1249	2955	42%
02/27/021/016	Scargill Reservoir	39	733	1932	38%
02/27/021/092	Scarhouse & Angram Resvrs with tunnel & catchwater	2032	34924	38164	92%
02/27/15/149	Silsden Beck, Stilling-Basin at foot of Silsden Reservoir Embankment	0	0	10	0%
02/26/032/126	Springhead Well	569	8274	13638	61%
02/27/022/021	Stalling Busk & Marsett Springs	0	0	33	0%
02/27/022/208	Stock Beck, Carlesmoor Beck & River Laver	0	628	3500	18%
02/27/023/684	Stubbing Nook Borehole	0	52	135	39%
03/28/083/012	Thornham Boreholes	187	3374	6213	54%
02/27/016/160	Thornton Moor & Stubden Reservoirs	0	1082	6214	17%
02/27/012/038	Turvin Clough	0	483	4014	12%
02/27/019/054	Upper & Lower Barden Reservoirs	265	4540	14223	32%
02/27/020/088	Washburn Valley Reservoirs	1774	29916	43800	68%
02/27/015/041	Watersheddles Reservoir	86	1474	6951	21%
02/27/016/021	Weecher Reservoir	0	144	909	16%
02/27/011/065	Wessenden Valley, Blackmoorfoot & Deerhill	521	9310	12410	75%
02/27/023/034	West Stonesdale (Garland Hill) Springs	0	0	282	0%
02/27/015/042	Whinney Gill & Jenny Gill Reservoirs	10	112	377	30%
02/27/005/026	Winscar, U & L Windleden, Harden & Snailsden	245	5373	10140	53%
02/27/012/036	Withens Clough Resr & Catchwater	152	2069	3319	62%
02/27/010/011	Yateholme, Riding Wood, Ramsden & Brownhill	187	2708	6820	40%

*Rivelin & Redmires reservoirs has estimates for Jan/Feb as we are waiting for some data from Severn Trent.

Licences with Aggregated Annual Quantities	Last calendar month MI	Year to date MI	Annual Limit	% of Annual Limit
Baitings, Ryburn, Boothwood, Green Withens	782	12465	20457	61%
Langsett, Midhope	836	15433	17155	90%
Worth Valley	301	5251	6951	76%
River Derwent (Elvington, Loftsme)	3877	75386	94841	79%
Cayton, Irton	387	7463	10700	70%
Selby Boreholes	832	16014	25283	63%
Doncaster Wellfield	1223	23936	30295	79%
Doncaster Sub Group	980	19263	26049	74%
Austerfield & Highfield Lane	350	7869	9956	79%
Hull Groundwater Sources	1380	25322	32850	77%

Third Party Agreements (Calendar Year)	Units in MI		Run date	01-Mar-24
Source	Last calendar month MI	Year to date MI	Annual Limit	% of Annual Limit
CRT, Hudds Narrow Canal	4	55	1273	4%
Severn Trent Ladybower Reservoir	1814	3791	21550	18%

Latest Reading date: 11-Mar-24

	Year to date MI	Annual Limit	% of Annual Limit
Winscar To Langsett Transfer Usage	1351	2482	54%